

## **SUPPLEMENTAL MATERIAL**

**Table S1. Histologic types of lymphoma in order of frequency**

<b>Histologic Type of Lymphoma</b>	<b>N= 2064</b>
Diffuse large B cell lymphoma	504
Chronic lymphocytic leukemia/Small cell lymphocytic lymphoma/ Monoclonal B cell lymphocytosis (MBL)	413/15
Follicular lymphoma	288
Hodgkin Lymphoma	228
Marginal zone lymphoma/MALT	139/26
Mantle cell lymphoma	102
Peripheral T-cell lymphoma NOS	98
Waldenstrom's Macroglobulinemia	80
Lymphoproliferative disorders not otherwise specified	32
Hairy cell leukemia	30
Mediastinal large B cell lymphoma	19
Hairy cell leukemia variant /Splenic diffuse red pulp lymphoma (SDRPL)	10/14
Burkitt's lymphoma	13
Cutaneous T cell lymphoma	12
Anaplastic large cell	11
T-cell large granular lymphocytic leukemia	10
Prolymphocytic Leukemia	9
Mycosis Fungoides	7
Angioimmunoblastic T-cell lymphoma	5
Lymphomatoid Papulosis (LyP)	4
Plasmablastic lymphoma	3
B acute lymphoblastic leukemia/Lymphoma	2

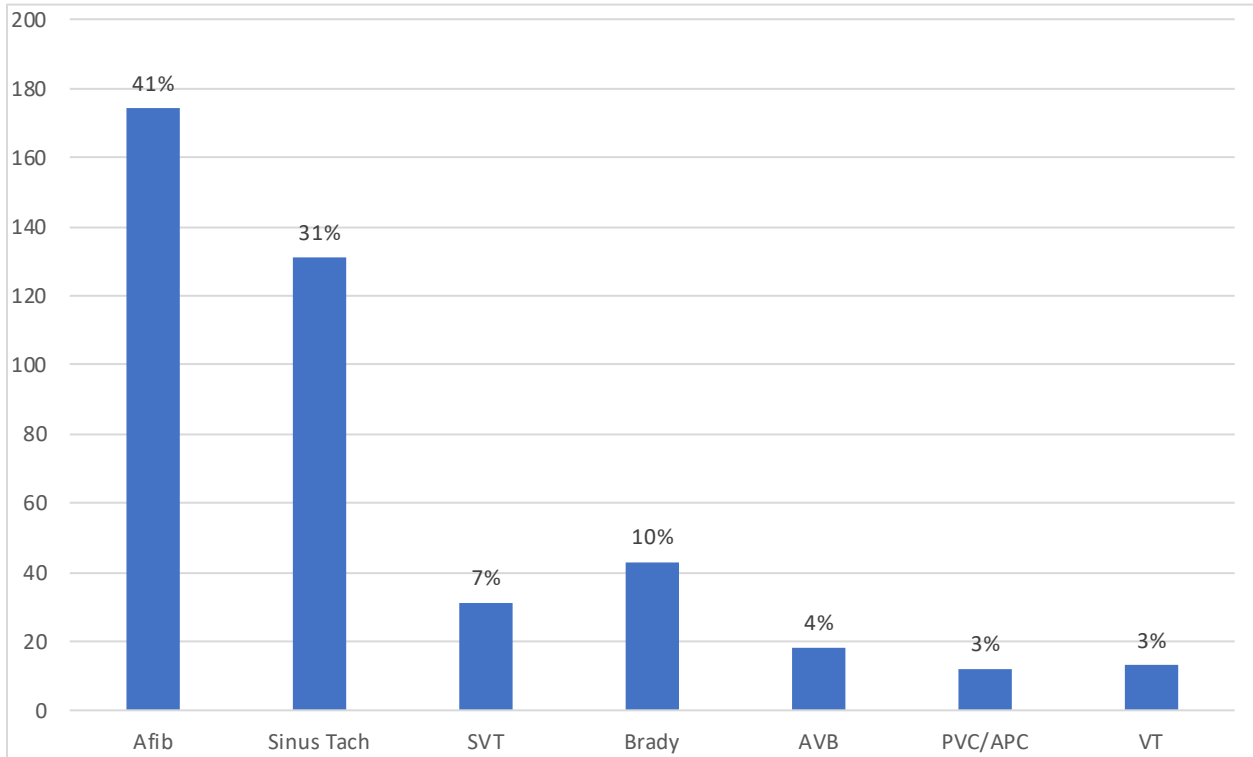
**Table S2. Histologic Subtypes by Indolent and Aggressive Categories**

<b>Histologic Type of Lymphoma</b>	
<b>Indolent Lymphoma</b>	
Chronic lymphocytic leukemia/Small cell lymphocytic lymphoma/ Monoclonal B cell lymphocytosis (MBL)	413/15
Follicular lymphoma	288
Marginal zone lymphoma/MALT	139/26
Waldenstrom's Macroglobulinemia	80
Hairy cell leukemia	30
Hairy cell leukemia variant /Splenic diffuse red pulp lymphoma (SDRPL)	10/14
Cutaneous T cell lymphoma	12
T-cell large granular lymphocytic leukemia	10
Mycosis Fungoides	7
<b>Aggressive Lymphoma</b>	
Diffuse large B cell lymphoma	504
Mantle cell lymphoma	102
Peripheral T-cell lymphoma NOS	98
Mediastinal large B cell lymphoma	19
Burkitt's lymphoma	13
Anaplastic large cell	11
Prolymphocytic Leukemia	9
Angioimmunoblastic T-cell lymphoma	5
Lymphomatoid Papulosis (LyP)	4
Plasmablastic lymphoma	3

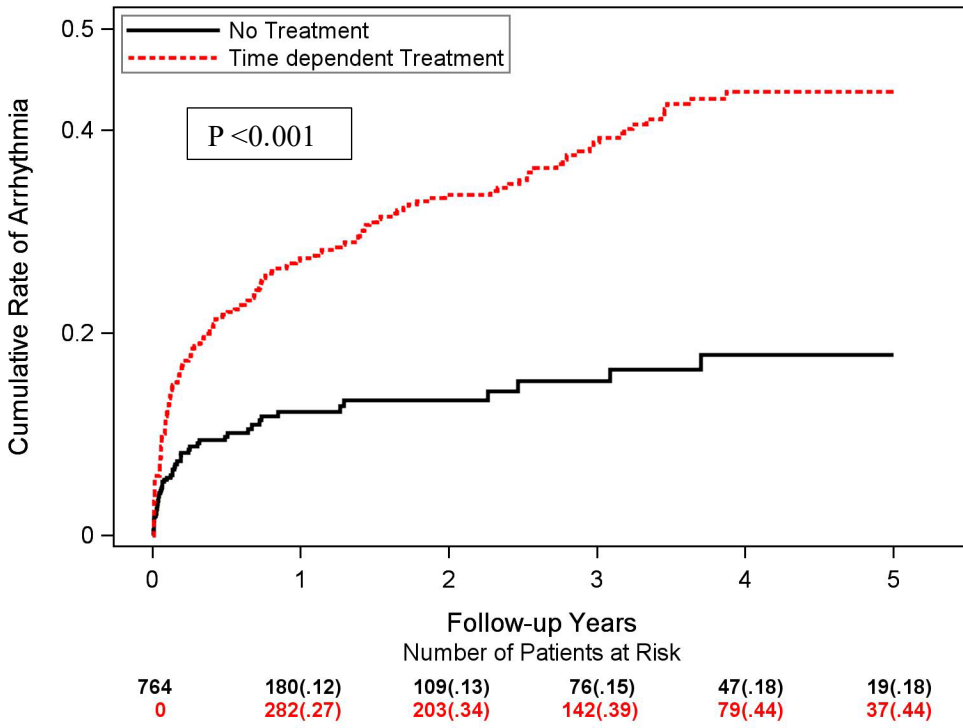
**Table S3. Cox Model for Time dependent treatment and Risk of Arrhythmia**

	HR	95% CI	P value
Time dependent Treatment overall vs. no treatment	2.08	1.62-2.68	<0.001
Race	1.11	0.68-1.79	0.666
Male	1.68	1.29-2.17	<0.001
Age	1.04	1.03-1.05	<0.001
CAD	0.81	0.58-1.12	0.216
Hyperlipidemia	1.21	0.89-1.64	0.205
Diabetes Mellitus	0.99	0.71-1.38	0.994
Hypertension	1.31	0.94-1.82	0.099
Heart Failure	1.89	1.24-2.87	0.002

**Figure S1. Distribution of Arrhythmia Types**



**Figure S2A. Time dependent treatment and Cumulative rate of any arrhythmia among patients with aggressive lymphomas**



**Figure S2B. Time dependent treatment and Cumulative rate of any arrhythmia among patients with Indolent lymphomas**

