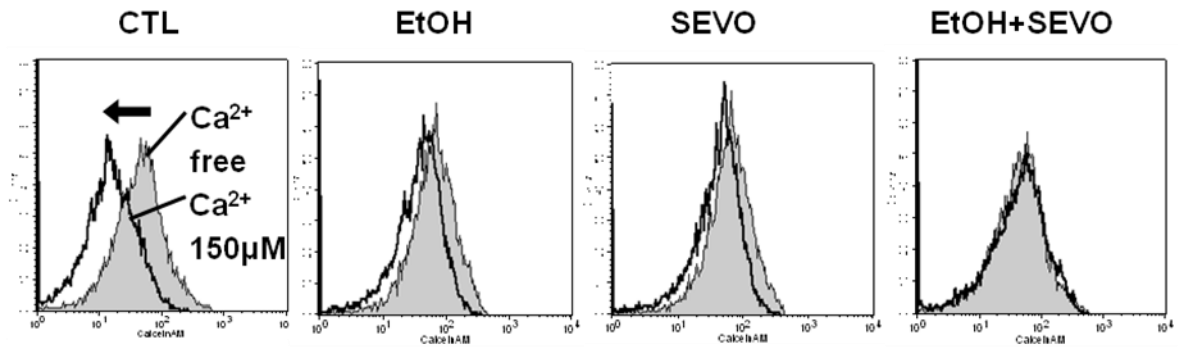
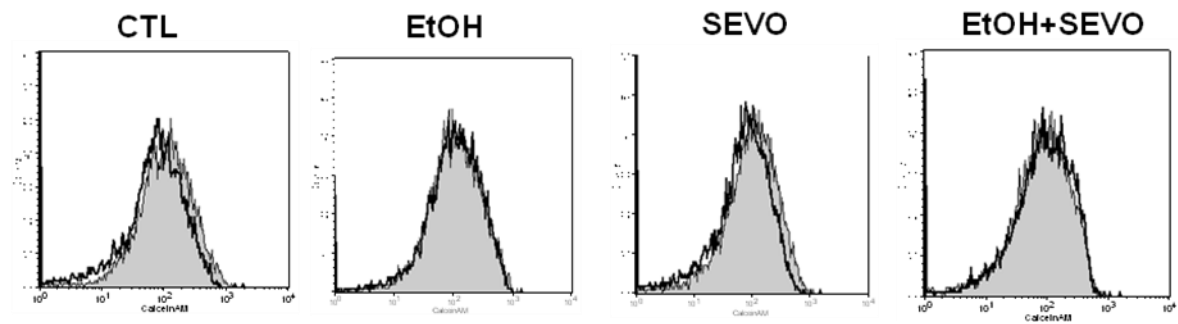
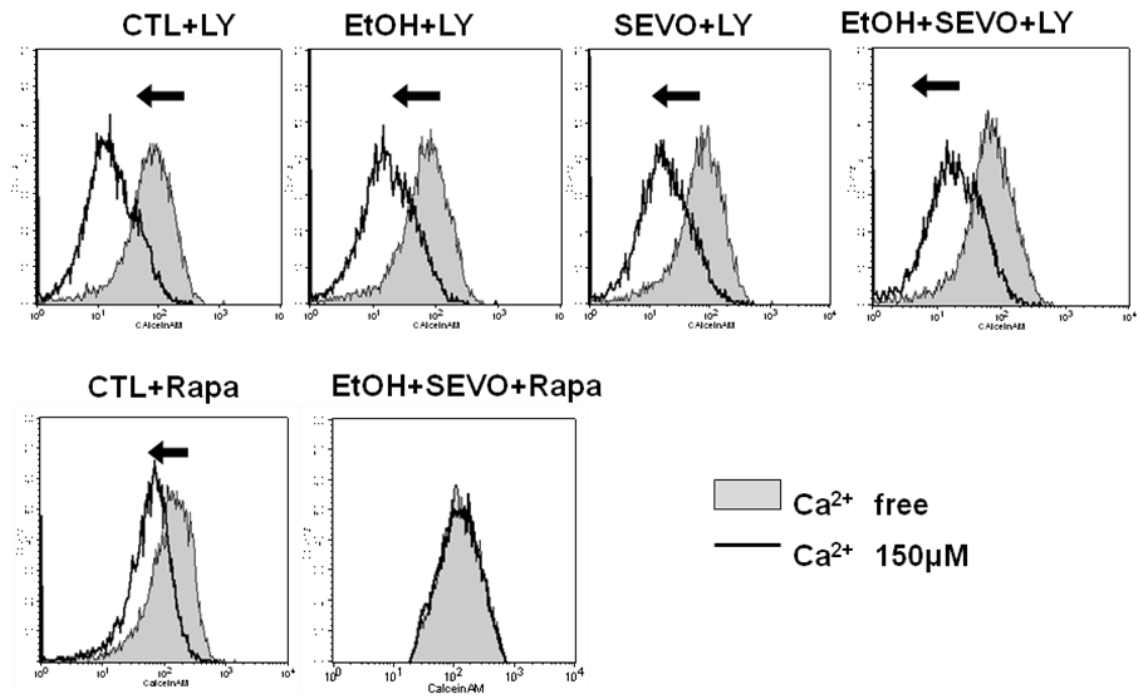


Figure 4

A : 150 μ M**B** : 50 μ M

C : 150 μ M

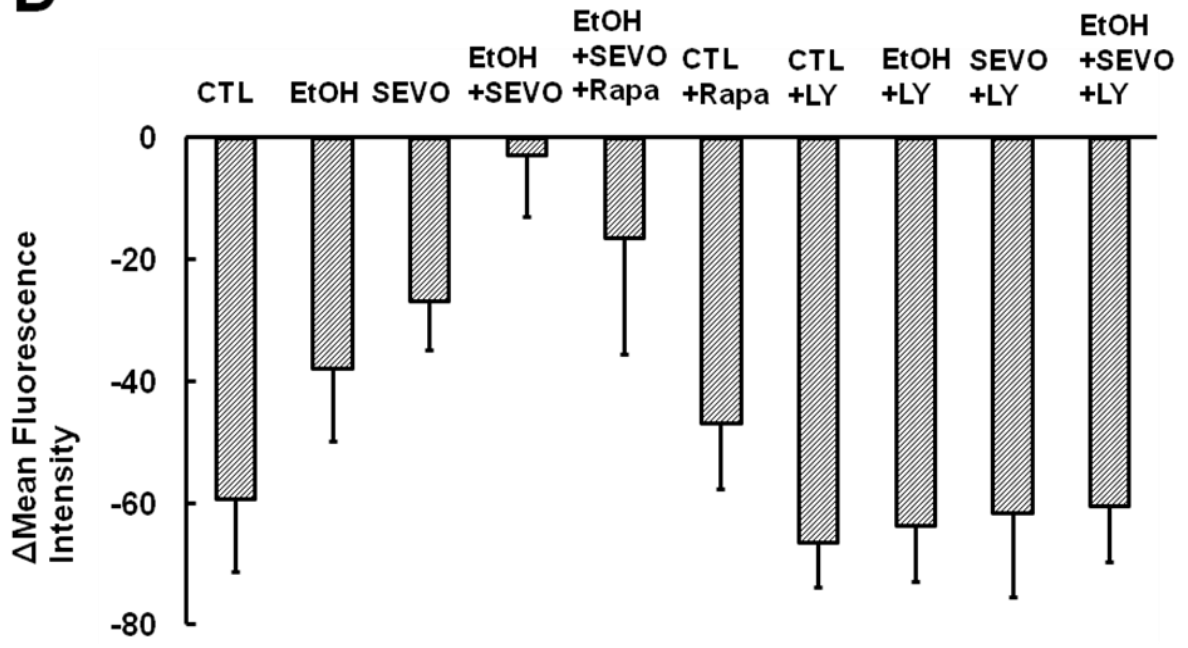
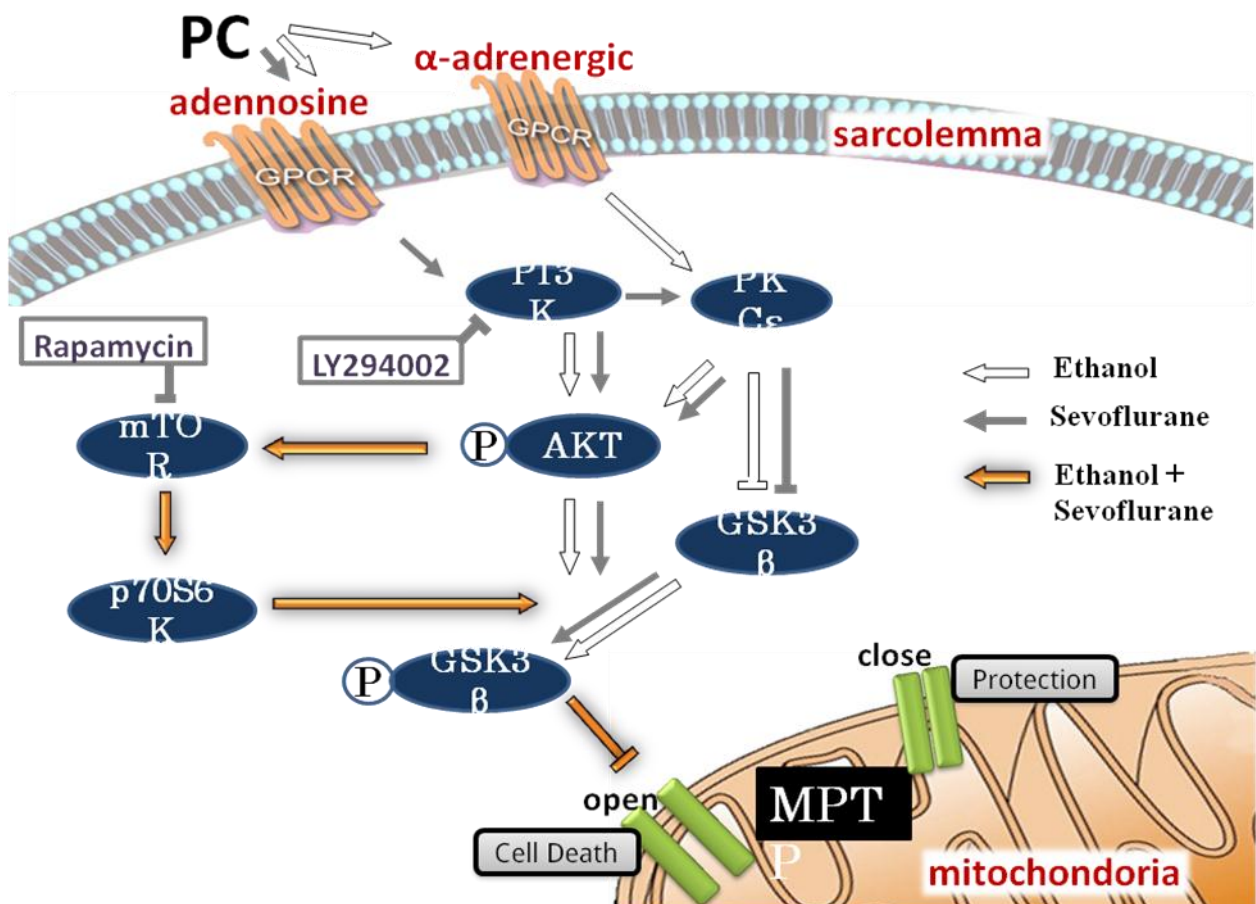
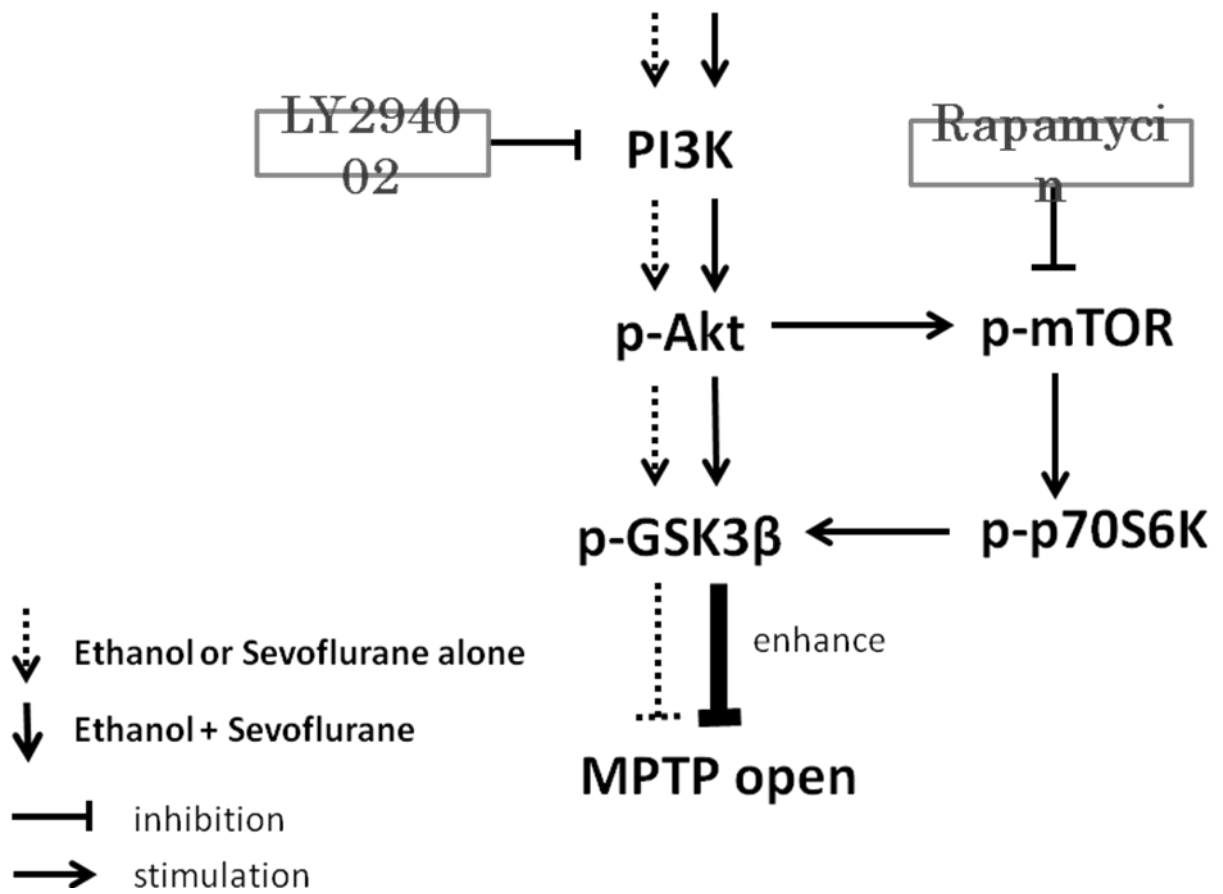
D

Figure 5



PC stimulus (ethanol and sevoflurane)



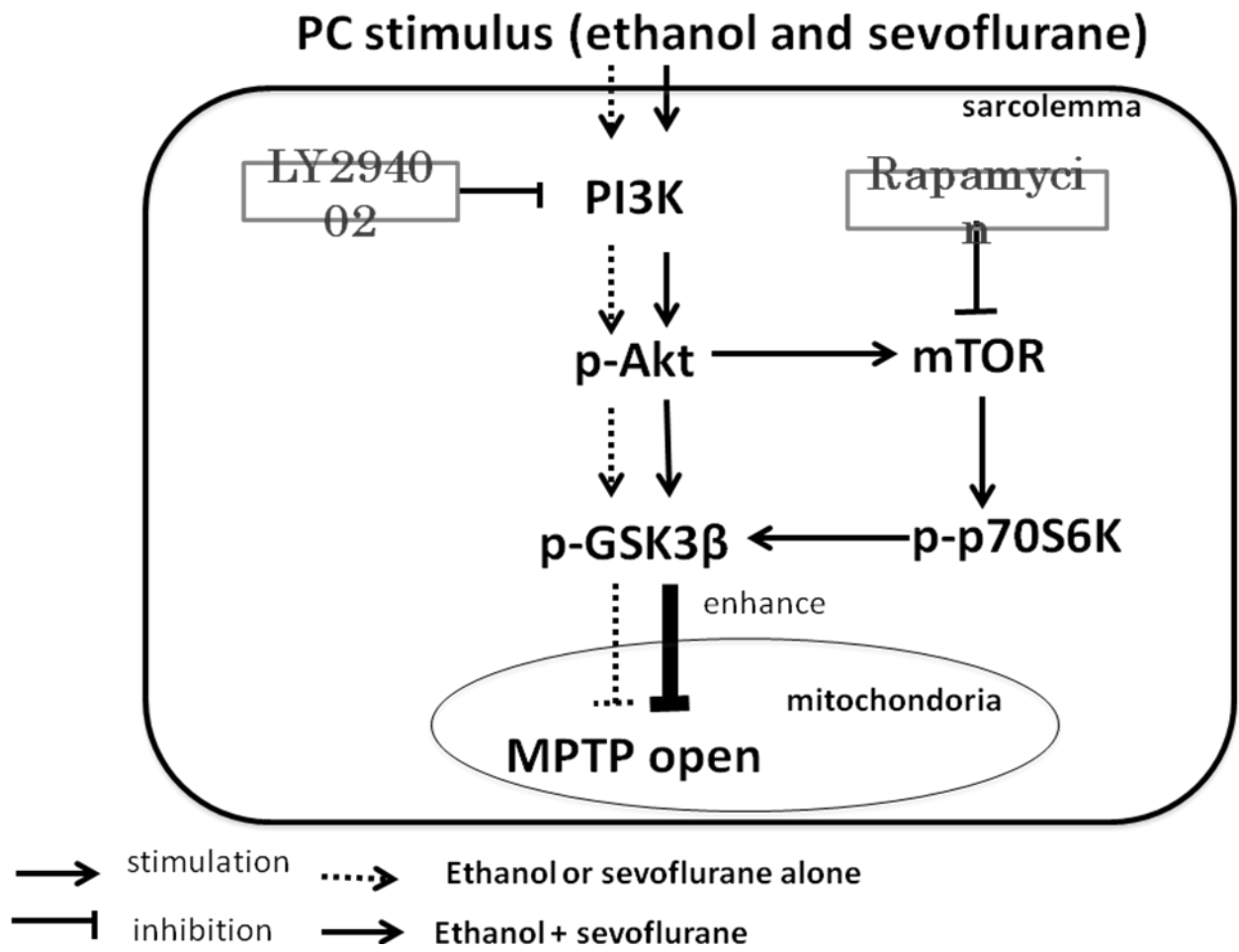


Table 1. Hemodynamic Variables

	Baseline	Reperfusion (min)		
		30	60	120
LVDP (mmHg)				
CTL	114 ± 17	40 ± 5	34 ± 7	26 ± 8
EtOH	117 ± 8	72 ± 10*	65 ± 12*	58 ± 10*
SEVO	101 ± 13	63 ± 7*	60 ± 8*	52 ± 8*
EtOH+SEVO	104 ± 15	65 ± 4*	63 ± 5*	59 ± 4*
CTL+LY	109 ± 13	47 ± 9	44 ± 7	38 ± 6
EtOH+LY	111 ± 9	42 ± 9	39 ± 6	35 ± 5
SEVO+LY	112 ± 15	39 ± 10	40 ± 10	35 ± 8
EtOH+SEVO+LY	104 ± 7	47 ± 10	43 ± 8	36 ± 5
EtOH+SEVO+Rapa	109 ± 9	74 ± 7*	67 ± 10*	55 ± 12*
CTL+Rapa	108 ± 8	58 ± 17	58 ± 16	50 ± 11*
LVEDP (mmHg)				
CTL	10 ± 0	50 ± 10	55 ± 16	59 ± 15
EtOH	10 ± 0	17 ± 14*	17 ± 16*	18 ± 16*
SEVO	10 ± 0	24 ± 7*	23 ± 4*	23 ± 5*
EtOH+SEVO	10 ± 0	20 ± 2*	17 ± 2*	15 ± 3*
CTL+LY	10 ± 0	32 ± 8*	29 ± 9*	27 ± 10*
EtOH+LY	10 ± 0	33 ± 13*	30 ± 13*	30 ± 17*
SEVO+LY	10 ± 0	34 ± 15*	32 ± 15*	28 ± 14*
EtOH+SEVO+LY	10 ± 0	24 ± 8*	21 ± 10*	20 ± 10*
EtOH+SEVO+Rapa	10 ± 0	19 ± 9*	20 ± 7*	21 ± 6*
CTL+Rapa	10 ± 0	29 ± 14*	26 ± 13*	28 ± 13*
CF (mL · min⁻¹ · g⁻¹)				
CTL	21 ± 5	16 ± 5	16 ± 7	15 ± 6
EtOH	23 ± 5	16 ± 4	14 ± 5	14 ± 5
SEVO	21 ± 6	16 ± 3	15 ± 3	15 ± 4
EtOH+SEVO	22 ± 3	14 ± 3	12 ± 3	12 ± 2
CTL+LY	22 ± 5	18 ± 4	15 ± 3	14 ± 3
EtOH+LY	23 ± 3	18 ± 4	15 ± 4	13 ± 4
SEVO+LY	19 ± 3	14 ± 2	12 ± 1	11 ± 1
EtOH+SEVO+LY	19 ± 3	19 ± 5	16 ± 4	14 ± 4
EtOH+SEVO+Rapa	23 ± 3	15 ± 3	12 ± 3	11 ± 3
CTL+Rapa	23 ± 6	21 ± 8	18 ± 7	14 ± 6

Table 1: Data are presented as mean ± SD. LVDP=left ventricular developed pressure; LVEDP=left ventricular end-diastolic pressure; CF=coronary flow; CTL=control; EtOH=Ethanol; SEVO=sevoflurane; LY=LY294002; Rapa=rapamycin. *p<0.05 vs. CTL, n=8 for each group.

