

COLLEGE OF POPULATION HEALTH

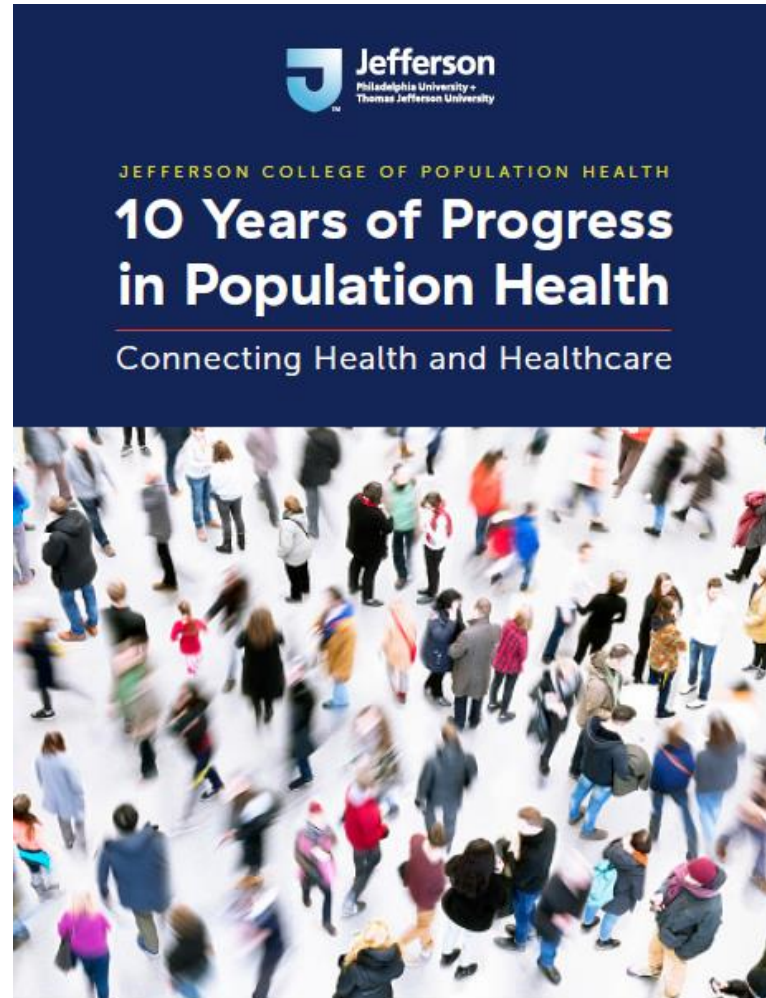
Spread the Science, NOT the Virus
Clinical Lessons from the Northeast Surge

September 29, 2020 | 4:00-5:00 pm ET



Jefferson
Thomas Jefferson University

Jefferson College of Population Health



Long-Term Care Facilities in the Time of COVID-19: Lessons in Crisis Management

Presented by:



**Vermont Association
of Hospitals
and Health Systems**

Moderated by:

Emma Harrigan

Director, Policy, Analysis and Development
Vermont Association of Hospitals and Health Systems



Long-Term Care Facilities in the Time of COVID-19: Lessons in Crisis Management



**Vermont Association
of Hospitals
and Health Systems**

Lindsay Morse, RN; Nicole Pace, RN; Bronwyn Becker; Stephen Berns, MD; Alecia Dimario; Amelia Gennari MD; Robert Gramling, MD, DSc; Daniel Hudson, RN; Audrey Kerin; Tim Lahey, MD; Michael LaMantia, MD; Ann Laramée, NP; Alexandra Messerli, MD; Mark Pitcher, MD; Colleen Roach, RN; Amber Snow, NP; Lynn Wilkinson, MD; Amanda Young, RN; and Steve Grant, MD.

Today's Speakers

University of Vermont Medical Center



Steve Grant, MD, FHM

Associate Chief Medical Officer for Care Coordination and Patient Transitions, UVM Medical Center
Associate Professor of Medicine, Larner College of Medicine
Associate Director, Division of Hospital Medicine, UVM Medical Group



Lindsay Morse

Director, Care Coordination and Patient Transitions
University of Vermont Medical Center

Birchwood Terrace



Alecia DiMario
Executive Director

Summary and Objectives

Even though Vermont was spared the massive surge of COVID-19 experienced in other states, we witnessed similar troubling COVID-19 outbreaks at long-term care facilities (LTC). The University of Vermont Medical Center (UVMHC)—Vermont’s only tertiary academic hospital—collaborated with Burlington Health and Rehabilitation and Birchwood to assist with outbreak management, a process which required partnerships with numerous other entities across our rural region.

In this webinar, we will share our experience in responding to the COVID-19 crisis, including data, successes, challenges, and recommendations from lessons learned. Our hope is that this will serve as an educational tool for LTC facilities and hospitals as they prepare for future COVID-19 outbreaks. We also hope that it will highlight the importance of collaboration, as outbreaks at one facility impact people and organizations far beyond the facility’s walls.

Burlington Health and Rehabilitation

- 126 total beds
- Mix of embedded physician and advance practice provider (APP) team employed by Genesis and part time embedded physician team employed by UVMHC
- High-rise/ floors with elevator access.
- Mix of single and shared rooms.

3/16

First case of COVID-19

IMPACT

Residents - 39 cases and 11 deaths

Employees - 28 cases and 0 deaths

5/7

Last case of COVID-19

Birchwood Terrace

- 144 total beds
- Embedded geriatric-trained physicians and APPs employed by UVMHC
- Single level, long hallways off main entrance.
- Mix of single and shared rooms.

3/30

First case of COVID-19

IMPACT

Residents - 92 cases (60 lab confirmed) and 20 deaths lab confirmed deaths (10 post-mortem)

Employees – 30 cases and 0 deaths

5/28

Building clear of COVID-19

Successes

- Advanced care planning
- Care in place
- Strong collaboration and sense of community

Challenges

- The disease
- Unclear accountability
- Visitation limitations
- Infection control
- Special situations
- Staffing
- Testing
- Decedent planning
- Culture
- Grief and well-being

Recommendations

- Define a clear system of stakeholder accountability and communication for outbreak responses
- Address advance care planning
- Assess ability to provide care in place
- Visitation
- COVID-19 Education

Recommendations

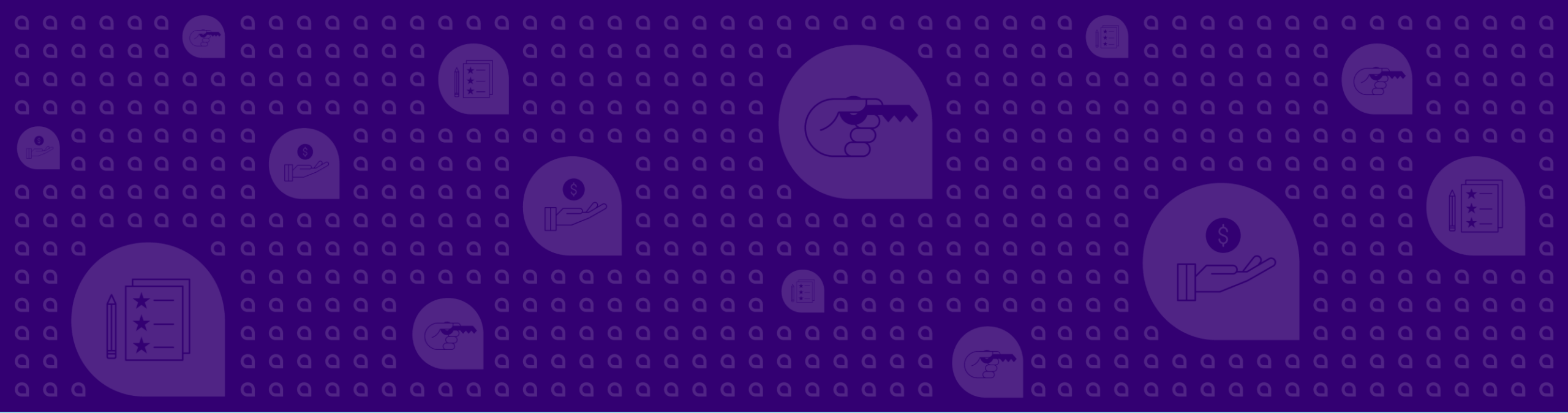
- Infection prevention and control for residents, staff, and returning residents
- Staffing
- COVID-10 symptom management and end-of-life care
- Decedent planning
- Grief, trauma, and the aftermath

Acknowledgements

It's impossible to individually thank the countless people involved in providing resident care and facility support. With that in mind, we would like to acknowledge the following groups:

- Bayada Home Health and Hospice
- Birchwood Terrace ownership, leaders, and staff
- Burlington Health and Rehabilitation ownership, leaders, and staff
- UVM Medical Group leadership
- UVM Division of Adult Primary Care
- UVM Division of Family Medicine
- UVM Division of Geriatrics
- UVM Division of Hematology and Oncology
- UVM Division of Palliative Medicine
- UVM Health Network Home Health and Hospice
- UVM Medical Center Engineering and Construction
- UVM Medical Center Infection Control
- UVM Medical Center Nursing
- UVM Medical Center Senior Leadership
- Vermont Department of Health
- Vermont National Guard
- Local restaurants that provided food

And... that incredible person who danced in different festive costumes outside our windows every day!



Q&A

Spread the Science, NOT the Virus

Clinical Lessons from the Northeast Surge Series



Weekly Webinar recordings can be found at Jefferson Digital Commons

<https://jdc.jefferson.edu/covid-19-ssnv>

For more information or questions visit [our website](#) or contact Mary.R.Cooper@Jefferson.edu.

Thank You!