

9-20-2022

Sickle Cell Disease Chronic Joint Pain: Clinical Assessment Based on Maladaptive Central Nervous System Plasticity

Tiago da Silva Lopes
Federal University of Bahia

Samir K. Ballas
Thomas Jefferson University

Jamille Evelyn Rodrigues Souza Santana
Federal University of Bahia

Pedro de Melo-Carneiro
Federal University of Bahia

Liljan Becerra de Oliveira
Follow this and additional works at: <https://jdc.jefferson.edu/medfp>
Bahia Adventist College

 Part of the [Hematology Commons](#), and the [Physiotherapy Commons](#)

[Let us know how access to this document benefits you](#)

See next page for additional authors

Recommended Citation

Lopes, Tiago da Silva; Ballas, Samir K.; Santana, Jamille Evelyn Rodrigues Souza; de Melo-Carneiro, Pedro; de Oliveira, Liljan Becerra; Sá, Katia Nunes; Lopes, Larissa Conceição Dias; Silva, Wellington Dos Santos; Lucena, Rita; and Baptista, Abrahão Fontes, "Sickle Cell Disease Chronic Joint Pain: Clinical Assessment Based on Maladaptive Central Nervous System Plasticity" (2022). *Department of Medicine Faculty Papers*. Paper 384.

<https://jdc.jefferson.edu/medfp/384>

This Article is brought to you for free and open access by the Jefferson Digital Commons. The Jefferson Digital Commons is a service of Thomas Jefferson University's [Center for Teaching and Learning \(CTL\)](#). The Commons is a showcase for Jefferson books and journals, peer-reviewed scholarly publications, unique historical collections from the University archives, and teaching tools. The Jefferson Digital Commons allows researchers and interested readers anywhere in the world to learn about and keep up to date with Jefferson scholarship. This article has been accepted for inclusion in Department of Medicine Faculty Papers by an authorized administrator of the Jefferson Digital Commons. For more information, please contact: JeffersonDigitalCommons@jefferson.edu.

Authors

Tiago da Silva Lopes, Samir K. Ballas, Jamille Evelyn Rodrigues Souza Santana, Pedro de Melo-Carneiro, Lilian Becerra de Oliveira, Katia Nunes Sá, Larissa Conceição Dias Lopes, Wellington Dos Santos Silva, Rita Lucena, and Abrahão Fontes Baptista



OPEN ACCESS

EDITED BY

Dipty Jain,
Government Medical College, India

REVIEWED BY

Carlton Dampier,
Emory University, United States
Jaime Ribeiro-Filho,
Oswaldo Cruz Foundation (FIOCRUZ),
Brazil

*CORRESPONDENCE

Abrahão Fontes Baptista
a.baptista@ufabc.edu.br

[†]This paper is dedicated to the
memory of Samir K. Ballas

SPECIALTY SECTION

This article was submitted to
Hematology,
a section of the journal
Frontiers in Medicine

RECEIVED 10 March 2021

ACCEPTED 23 August 2022

PUBLISHED 20 September 2022

CITATION

Lopes TS, Ballas SK, Santana JERS, de
Melo-Carneiro P, Oliveira LB, Sá KN,
Lopes LCD, Silva WS, Lucena R and
Baptista AF (2022) Sickle cell disease
chronic joint pain: Clinical assessment
based on maladaptive central nervous
system plasticity.
Front. Med. 9:679053.
doi: 10.3389/fmed.2022.679053

COPYRIGHT

© 2022 Lopes, Ballas, Santana, de
Melo-Carneiro, Oliveira, Sá, Lopes,
Silva, Lucena and Baptista. This is an
open-access article distributed under
the terms of the [Creative Commons
Attribution License \(CC BY\)](https://creativecommons.org/licenses/by/4.0/). The use,
distribution or reproduction in other
forums is permitted, provided the
original author(s) and the copyright
owner(s) are credited and that the
original publication in this journal is
cited, in accordance with accepted
academic practice. No use, distribution
or reproduction is permitted which
does not comply with these terms.

Sickle cell disease chronic joint pain: Clinical assessment based on maladaptive central nervous system plasticity

Tiago da Silva Lopes^{1,2,3}, Samir K. Ballas^{4†},
Jamille Evelyn Rodrigues Souza Santana^{1,3,5},
Pedro de Melo-Carneiro¹, Lilian Becerra de Oliveira^{2,6},
Katia Nunes Sá^{3,6}, Larissa Conceição Dias Lopes⁷,
Wellington dos Santos Silva², Rita Lucena¹ and
Abrahão Fontes Baptista^{1,3,5,6,8*}

¹Graduate Program in Medicine and Health, Federal University of Bahia, Salvador, BA, Brazil,

²Adventist Neuromodulation and Neuroscience Laboratory, Bahia Adventist College, Cachoeira,

Brazil, ³NAPEN Network (Nucleus of Assistance, Research, and Teaching in Neuromodulation),

São Paulo, SP, Brazil, ⁴Department of Medicine, Jefferson Medical College, Cardeza Foundation for

Hematologic Research, Thomas Jefferson University, Philadelphia, PA, United States, ⁵Center for

Mathematics, Computation, and Cognition, Federal University of ABC, São Bernardo do Campo, SP,

Brazil, ⁶Graduate program of Medicine and Human Health, Bahiana School of Medicine and Public

Health, Salvador, BA, Brazil, ⁷Department of Physiotherapy, General Hospital of the State of Bahia,

Salvador, BA, Brazil, ⁸Laboratory of Medical Investigations 54 (LIM-54), Universidade de São Paulo,

São Paulo, SP, Brazil

Chronic joint pain (CJP) is among the significant musculoskeletal comorbidities in sickle cell disease (SCD) individuals. However, many healthcare professionals have difficulties in understanding and evaluating it. In addition, most musculoskeletal evaluation procedures do not consider central nervous system (CNS) plasticity associated with CJP, which is frequently maladaptive. This review study highlights the potential mechanisms of CNS maladaptive plasticity related to CJP in SCD and proposes reliable instruments and methods for musculoskeletal assessment adapted to those patients. A review was carried out in the PubMed and SciELO databases, searching for information that could help in the understanding of the mechanisms of CNS maladaptive plasticity related to pain in SCD and that presented assessment instruments/methods that could be used in the clinical setting by healthcare professionals who manage chronic pain in SCD individuals. Some maladaptive CNS plasticity mechanisms seem important in CJP, including the impairment of pain endogenous control systems, central sensitization, motor cortex reorganization, motor control modification, and arthrogenic muscle inhibition. Understanding the link between maladaptive CNS plasticity and CJP mechanisms and its assessment through accurate instruments and methods may help healthcare professionals to increase the quality of treatment offered to SCD patients.

KEYWORDS

musculoskeletal pain, symptoms assessment, red cell disorders, practical reasoning, evidence-based medicine

Introduction

Sickle cell disease (SCD) is a set of hereditary diseases caused by substituting glutamine acid for valine at the sixth position of the hemoglobin β chains, which leads to the presence of hemoglobin S (HbS). Conditions such as low oxygen concentration, hypovolemia, and others can precipitate the structure twisting of HbS molecules fibers forming the sickle-shaped red blood cell membrane causing vaso-occlusive crises, which are the main reason for pain complaints in this population throughout life (1). The pain in SCD individuals can be acute or chronic and can emerge from nociceptive, inflammatory, and neuropathic mechanisms (2). SCD pain syndromes are classified as intermittent, persistent pain between vaso-occlusive crises and chronic pain complications (3).

Among the chronic pain complications, chronic joint pain (CJP) is a common condition in SCD that may also be associated with several musculoskeletal problems such as osteomyelitis, dactylitis, arthritis, and osteonecrosis both in adult and pediatric individuals (4–6). These chronic pain complications have a higher incidence in SCD and play an additional role in chronic pain generation (4, 5). The CJP may be focal when involving a single joint or multifocal when involving more than one joint (7). However, to date, few studies demonstrate the influence of maladaptive plasticity in the central nervous system (CNS) in the maintenance of CJP in SCD individuals, although these individuals have chronic pain with nociceptive, neuropathic, and possible nociplastic pain characteristics (8, 9). The presence of central sensitization, for example, is related to more episodes of pain crisis and frequent hospitalizations (10). Of utmost importance, few studies were developed explicitly for CJP in SCD.

The poor correlation between structural lesions, the intensity of self-reported pain (11), and the diffuse nature of the symptoms make CJP assessment a challenge for clinicians and healthcare professionals. In general, healthcare professionals have poor knowledge about pain neuroscience mechanisms (12) and reliable ways of assessing it (13, 14). This poor knowledge goes against the International Association Study of Pain (IASP) recommendation in the declaration of the Montreal meeting, which highlights that all people with pain have the right to have access to appropriate assessment and treatment of the pain by adequately trained healthcare professionals (15). Thus, considering the potential relation between CJP and central maladaptive plasticity in SCD individuals and the deficit in healthcare professionals' knowledge about pain neuroscience mechanisms and pain assessment, this review aims to highlight the mechanisms of CNS maladaptive plasticity that might be related to CJP in SCD and propose a battery for reliable musculoskeletal assessment adapted to those patients.

Method

This review was carried out in the PubMed and SciELO databases, searching for information that could help in the understanding of the mechanisms of CNS maladaptive plasticity related to pain in SCD and that presented assessment instruments/methods that could be used in the clinical setting by healthcare professionals who manage chronic pain in SCD individuals. There was no limit placed on the publication year, and the searching was carried out through a combination of keywords such as Sickle Cell Disease and Joint Pain or Chronic Pain or Pain Assessment or Central Sensitization Evaluation or Painful Movement Assessment, Chronic Joint Pain and Cortical Reorganization or Arthrogenic Muscle Inhibition or Chronic Inventory Central Sensitization or Quantitative Sensory Test or Clinical Evaluation. In addition, the reference list of papers also was searched.

Chronic joint pain in SCD: An overview of the problem

International Association Study of Pain defines pain as “An unpleasant sensory and emotional experience, associated with, or resembling that associated with, actual or tissue damage” (16). Pain plays a vital role in the organism's defense reaction to a hostile environment, and evidence of this is that in individuals with pain insensitivity, injuries are not perceived as such, decreasing life expectancy (17). On the other hand, chronic pain is persistent beyond 3–6 months, has no functional role, and is responsible for rendering dysfunctional several biological systems (18). In SCD, the constant joint tissue injuries secondary to the vaso-occlusive crisis are critical in developing chronic joint pain.

Primary afferent nociceptors richly innervate the joint in their capsule and synovium (19). These fibers are mostly from types A δ and C and can be classified into two types: (a) True nociceptors; (b) Silent nociceptors. True nociceptors respond to mechanical nociceptive stimuli even in non-pathological conditions. As for the silent nociceptors, to respond to this type of stimuli, they must be primarily sensitized by inflammation-inducing aggressors (19, 20). The primary afferent nociceptors have on their membranes a wide variety of transient receptor potential ion channels that are responsible for the transduction of a wide variety of noxious stimuli arising from high magnitude mechanical, thermic, or chemical origins (21, 22). The nervous system sensitization occurs basically by neurogenic inflammation, mast cell activation, N-methyl-D-aspartate (NMDA) receptors activation, and glial activation (1, 2), which play an important role in the maintenance and subsequent pain chronicity in SCD individuals.

After joint tissue injury, the pro-inflammatory mediators such as bradykinins and prostaglandins interact with receptors or transient receptor potential vanilloid type 1 (TRPV1) of nociceptive fibers and sensitize them to augment their response to a noxious stimulus (2, 22). Once activated, the nociceptors release peptides and neurotransmitters such as calcitonin gene-related peptide and substance P, which further contribute to the inflammatory response, causing vasodilation, swelling, and mast cell activation. Mast cells act by degranulation of histamine, which further sensitize nociceptors (23). Interestingly, serum levels of substance P are increased in SCD individuals during the vaso-occlusive crisis and baseline state (24) and have been associated with to use of hydroxyurea (25). This cascade of biochemical events lowers the activation threshold of true nociceptors and recruits previously unresponsive silent nociceptors, which induce hyperalgesia and allodynia in joint pathologies in SCD individuals (26).

N-methyl-D-aspartate receptors are involved in the long-term potentiation process and are a crucial player in the chronicity of pain (27). At the spinal cord level, the constant nociceptive information arrives in the dorsal horn and provoke the release of glutamate neurotransmitter in presynaptic terminals that interacts with NMDA receptors post-synaptic (3). When NMDA receptors are activated, the nitric oxide is synthesized in the presynaptic terminals, increasing the expression of voltage-gated Ca²⁺ channels mainly responsive to P substance and glutamate (3). Concurrently, glial activation releases pro-inflammatory cytokines and more glutamate in this synaptic environment (1, 3). Thus, these series of intracellular signaling cascades augment and facilitate the transmission of nociceptive information.

These nociceptive information reaches higher encephalic areas, such as Rostral Ventromedial Medulla (RVM), Periaqueductal Gray Matter (PAG), thalamus, amygdala, anterior cingulate cortex, somatosensory, prefrontal, and motor cortices (28, 29) that process and modulates the nociceptive information. However, nociceptive modulation can occur before reaching the thalamus and other brain structures (30). Once that nociceptive information reaches the thalamus, it processes it and redirects it to cortical areas of the primary and secondary somatosensory cortex through thalamocortical and thalamus-amygdala connections (29). The PAG, in turn, receives inputs from these superior centers and sends them to the RVM medulla, which through axonal fibers of “on” and “off” cells, modulate neuronal activity, facilitating or inhibiting the transit of nociceptive information in the dorsal horn of the spinal cord both presynaptic and post-synaptic (30, 31). This complex endogenous mechanism forms a pain processing and control system, often presenting a maladaptive function in chronic joint pain (Figure 1).

Maladaptive CNS plasticity mechanisms and ways to evaluate it

Dysfunction of descending inhibitory control in CJP

Central nervous system has various ways of inhibiting the input of pain information to higher processing centers. Descending inhibitory control is a mechanism of diffuse pain inhibition. Studies with conditions of CJP similar to SCD, such as hip and knee osteoarthritis, showed that the descending inhibitory control dysfunction might be an important triggering factor for central sensitization and chronic pain (32). Although some studies have found no consistent results about dysfunctions of descending inhibitory control in adult SCD individuals (10, 33), neuroimage data from another study with adult SCD individuals showed that there is an increased resting-state functional connectivity between the PAG and cerebellum in SCD individuals (34) which can affect RVM’s “on” and “off” cells activity. In pediatric SCD individuals, the dysfunctions of the descending inhibitory control are few explored, but data from non-SCD individuals has shown that deficient endogenous pain inhibition can stem from painful experiences during infancy (35, 36). Therefore, these data make us think that the function of the descending inhibitory control system in SCD still needs to be better understood and evaluated in the clinical context.

One of the traditional ways of assessing descending pain inhibitory system is through the paradigm of Conditioned Pain Modulation (CPM), previously known as “counter-irritation,” “pain inhibits pain,” and “heterotopic noxious conditioning modulation,” and “diffuse noxious inhibitory control”(37). This phenomenon is activated after a set of intense and/or noxious stimuli, making it a protective endogenous response to aggression. The evaluation of descending inhibitory control by the CPM method should be recommended for SCD individuals due to the malfunctioning of this mechanism is closely related to the persistence of joint pain in musculoskeletal conditions such as osteoarthritis and temporomandibular dysfunction (32, 38, 39) (Figure 2). However, clinicians should be aware that the long-term pain, and the use of opioid agents can result in a reduced response of CPM scores (40).

In CPM assessment, a pressure threshold meter for applying painful mechanical stimulus in the thenar region of the non-dominant hand has a good coefficient of intra-session reliability (ICC >0.75). It seems to be a reliable method for performing a Painful Stimulus Test (PST). The pain caused by the mechanical stimulus must be of moderate intensity (41, 42). In turn, the Painful Conditioning Stimulus Test (PCST) can be done with cold or hot water. However, the immersion of the dominant hand in a water vessel with a temperature of 46.5°C has a good Intraclass Correlation Coefficient (ICC = 0.79) (42) and

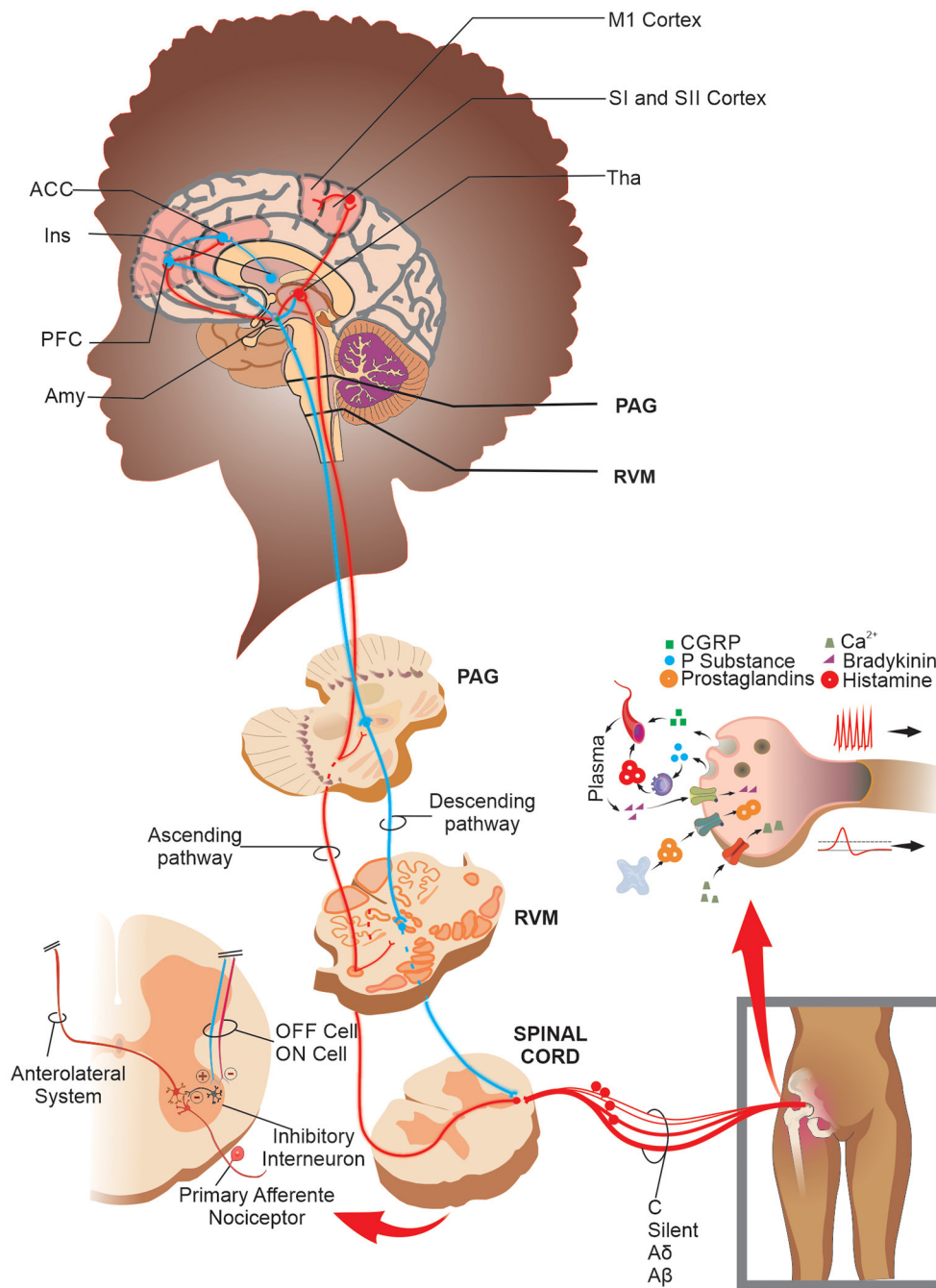
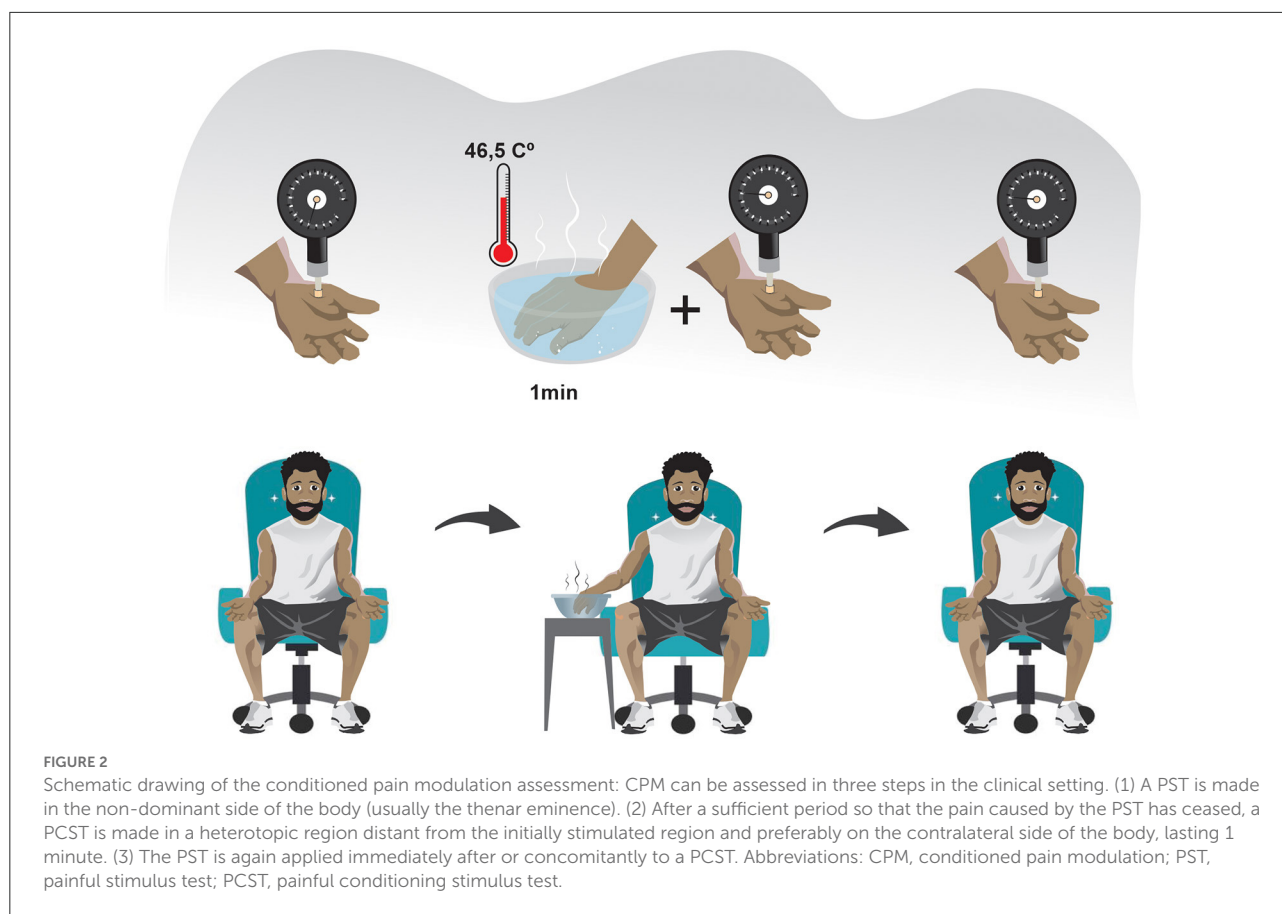


FIGURE 1

Schematic drawing of the peripheral sensitization, processing, and nociceptive modulation in joint pain: After a noxious stimulus in the joint, the TRP channels in true nociceptors transduce the nociceptive information and lead it to second-order neurons in the spinal cord. In addition, when there is a joint injury, a massive release of the pronociceptive chemical substances in/by free nerve endings promotes a depolarization threshold decrease and an increase in firing frequency rate in both true and silent nociceptors and mechanical receptors. The nociceptive information reaches the CNS, which processes and modulates it through brain networks and the PAG-RVM system. Specifically, in SCD patients, there is increased functional connectivity in areas such as PFC, ACC, M1, SI, and SII cortices. Abbreviations: ACC, anterior cingulate cortex; Amy, amygdala; CGRP, calcitonin gene-related peptide; Ins, insula; M1, primary motor cortex; PAG, periaqueductal gray matter; PFC, prefrontal cortex; RVM, rostral ventromedial medulla; SI, primary somatosensory cortex; SII, secondary somatosensory cortex; Tha, thalamus; TRP, transient receptor potential.



is more recommended in the SCD context because it can avoid a vaso-occlusive crisis during the evaluation. Using a thermometer to verify the heat dissipation and ensure the ideal temperature during immersion and using the same kilograms-force generated by the pressure threshold meter during the PST before and after the PCST may decrease potential measurement biases (41, 42).

The quantification of the CPM can be made according to the following equation:

$$CPM = piPST1 - piPST2$$

Where $piPST1$ corresponds to the pain intensity caused by the first painful stimulus test and $piPST2$ pain intensity caused by a second painful stimulus test. A positive result indicates the presence of a preserved descending inhibitory control, while a negative result indicates the opposite (42).

Central sensitization in CJP

Previously, the term “centralized pain” was often used to classify the pain experienced by patients with central

sensitization. However, this term was not part of recognized by the IASP. Following the proposition of a research group (43), an IASP force task recently added a new pain term called “nociplastic pain” into the list of taxonomic definitions for pain (44), even though it caused a comprehensive discussion related to its real need and the best way for it to be defined (45–47). This new term proposes to differentiate the “pain that arises from altered nociception, despite there is no clear evidence of actual or threatened tissue damage that causes peripheral nociceptor activation or evidence of disease or injury to the somatosensory system that causes pain” from those kinds of pains typically classified only as nociceptive or neuropathic.

The central sensitization mechanisms involve the perpetuation of joint pain that can be favored by poor descending inhibitory control, which over time causes phenotypic alteration of $A\beta$ fibers specialized in conducting non-painful stimuli (30). In addition, nociceptive information is not properly inhibited in the dorsal horn of the spinal cord and advances freely until it reaches higher areas of the nervous system, causing a central sensitization of multiple structures (48). Central sensitization of multiple structures involves a maladaptive change of important anatomic/functional networks that process information in all pain dimensions, i.e., sensory,

emotional, and cognitive (49). Due to the important role in pain processing, these anatomic/functional networks are called the pain connectome (49).

In conditions of chronic non-SCD pain, the default mode network (DMN), the salience network (SLN), the sensorimotor network (SMN), and the antinociceptive system are connectome strongly affected by central sensitization (49, 50). The DMN includes the medial prefrontal cortex, posterior cingulate cortex, precuneus, and lateral parietal cortices and is activated in a resting state of the mind when the individual is instructed not to think about anything specific (49). Next, SLN comprises the bilateral insula cortices, anterior cingulate cortex, and middle cingulate cortex and is activated by salient stimuli that stand out from the environment (e.g., nociceptive stimulation caused by the movement of an inflamed joint) (51). The SMN includes bilateral primary and secondary somatosensory cortices, primary motor (M1) cortex, and the supplementary motor area (SMA) and is involved in the descriptive sensory processing of pain (51). Finally, the antinociceptive system comprises the PAG and RVM, which, as previously discussed, are core structures involved in pain modulation (49). This pain connectome is dynamic due to the capacity to generate connections within and between themselves (49).

In SCD individuals with chronic pain, some studies using functional Magnetic Resonance Image (fMRI) alone or coupled with Electroencephalography (EEG) have found a maladaptive change in the pain connectome (34, 51–53). Their results showed that SCD individuals with high levels of pain and hospitalizations had an increased resting-state functional connectivity between SLN, DMN, and SMN structures (e.g., dorsal anterior cingulate cortex and the right precuneus, secondary somatosensory cortex, and the left precuneus, inferior parietal lobule and the middle cingulate cortex, right posterior cingulate cortex and the right primary somatosensory cortex) when compared with individuals with low levels of pain and hospitalizations (52). SCD individuals also presented hypoconnectivity of SMN structures (i.e., motor cortex) compared to healthy controls and between other regions outside of the SMN, such as the dorsolateral prefrontal and parietal cortices (51). In addition, this same study found that SCD increased functional connectivity between DMN and SLN structures (e.g., precuneus/ posterior cingulate cortex and temporal regions) (51). Finally, studies comparing SCD individuals and healthy controls found changes in functional connectivity of the PAG (a core structure of the antinociceptive system) (34, 53). Functional connectivity between the PAG and the anterior cingulate cortex (a structured core of SLN) is decreased in SCD patients when compared to healthy individuals but increased between the PAG and several cortical regions that play functions of sensory processing, motor processing/executive function, emotion and memory/learning when SCD patients were compared with those without pain (53).

The sensitization of the pain connectome may be associated with multiple musculoskeletal and non-musculoskeletal symptoms found in individuals with severe chronic pain. These include decreased pain threshold, expansion of pain receptive field to further regions unrelated to pain, interpretation of non-painful stimuli as painful, photophobia, bowel diseases, and sleep, attention, and mood-altering (54, 55). The emergence of these phenomena may trigger the change of the clinical status from a musculoskeletal disease to a multi-systems disease. Typically, those symptoms are under-evaluated by clinicians and are not related to the presence of persistent pain. However, these aspects are essential as they help in decision-making and prediction of patient outcomes, as evidenced by a study that showed that individuals with central sensitization due to chronic pain secondary to osteoarthritis of the knee are five times more likely to have pain refractory to surgical treatment of total knee arthroplasty (56). In SCD individuals, central sensitization has been associated with increased vaso-occlusive crises, poor sleep quality, and psychosocial disorders (10). For this reason, this should be considered during the evaluation since this is probably one of the main causes of refractory joint pain (57).

Sensitivity hyperphenomena, such as allodynia or hyperalgesia to thermic and vibratory stimuli, and mechanical and thermal temporal summation, have been associated with central sensitization in non-SCD individuals with chronic pain (57). These sensitivity deficits are also found in pediatric SCD individuals, among lower mechanic pain, cold pain, heat pain, thermal detection thresholds, and heat pain tolerance (58). In addition, studies with adult SCD individuals showed that they also present sensory alterations expressed by a higher intensity of cold pain, heat pain, thermal temporal summation, and mechanic pain is found in compared with healthy controls (33, 59).

Some methods are essential in evaluating central sensitization/nociplastic pain characteristics in clinical and research settings because they can help evaluate whether CJP in SCD is influenced and/or supported by central sensitization. The central sensitization inventory (CSI) is an evaluation instrument that, although non-specific to SCD, is highly recommended to be used in clinical practice in the SCD context (54). The CSI is divided into two parts, A and B. In part A, 25 descriptive alternatives of multidimensional symptoms are associated with central sensitization. Each alternative has a score varying from zero (never) to four (always), with a maximum total score of 100 points. In part B, 10 alternative clinical conditions are recognized as central sensitivity syndromes (CSS) (60). The cut-off at 40 points has excellent levels of sensitivity (81%), specificity (75%), positive predictive (2.93), and negative predictive value (0.52) to recognize central sensitization (60). However, despite these good diagnostic accuracy values, the CSI still needs to be validated in SCD individuals, and its results should be interpreted with caution. Due to the need for severity ratings of central sensitization, a 10-point classification

with severity intervals was created, consisting of the following categories: subclinical (≤ 29), mild (30–39), moderate (40–49), severe (50–59) and extreme (≥ 60) (61). This severity rating allows better utilization of CSI in clinical practice and may help as a parameter of the therapeutic response. This instrument has been culturally translated and validated in several languages (62, 63).

Quantitative sensory tests (QST) are another way to assess central sensitization (10, 57, 64). All systematic sensory evaluations that allow quantified responses can be viewed as a QST. However, a set of QST (mechanical, thermal, and vibratory) was standardized to evaluate the integrity of the somatosensory system and to guarantee the accuracy and reproducibility of the findings (65). QST protocols consider several sensory parameters, as well as biological aspects ranging from body temperature to trophic changes in the musculature (64, 65). However, although QST protocols can be performed in both bedridden and non-bedridden individuals, their complete execution is time-consuming and can be impracticable in some clinical contexts. In this context, there are some attempts to validate a bedside QST as a low-cost and time-efficient alternative (66, 67).

The bedside QST can be easily applied in clinical routine, and its execution does not require a large training time. Studies showed that bedside QST protocol using low-cost equipment could be used in each step of the sensory assessment procedure, such as (a) 3 cm² metal coin/piece with 22°C or 37°C (cold/warm detection thresholds); (b) cotton wool/Q-tip (mechanical detection threshold); (c) tuning fork (vibration detection threshold); (d) 10-ml syringe sealed or toothpick (mechanical and pressure pain threshold); (e) glass vial filled with hot water 40°C or metal pieces with 45°C (heat pain threshold); (f) ice cubes in a plastic bag or metal piece with 8°C (cold pain threshold); (g) toothpick (temporal summation) (66, 67). However, the correlation between bedside QST and standard QST protocol is variable and impacted by the expertise of a healthcare professional.

A study proposed three steps of a decision tree that helps clinicians to interpret the findings of QST evaluation of mechanical detection threshold (A β fibers), cold pain (A δ fibers), and heat pain (C fibers), specifically in SCD individuals (8). In the clinical setting, QST stimuli should be evaluated in both painful and non-painful sites. In the first step, if all QST findings are negative, the clinical interpretation must be that there is no central or peripheral sensitization. In the second step, if mechanical stimuli findings in the non-painful site are positive, then the clinical interpretation must be that there is central sensitization. In the third step, if cold or heat pain is present in the painful site and these same painful stimuli result negative in the non-painful site, then the clinical interpretation must be that there is peripheral sensitization. Finally, the decision tree proposes that if all three steps result in negative findings, then the interpretation must be that there is mixed pain (8).

The safety of the QST protocol in the clinical setting has been previously tested in subjects with SCD, and there was no perpetuation or worsening of pain after its application (8). However, attention is necessary because data show that after QST testing in SCD patients, there are changes in pro-inflammatory biomarkers such as increased levels of Interleukin 6 (IL-6), substance P, and tumor necrosis Factor-alpha (TNF α) (33). In SCD, the thermal pain threshold (TPT) to cold $<17.01^{\circ}\text{C}$ and heat $<43.91^{\circ}\text{C}$ are indicative of impaired nerve sensitivity, and pressure pain threshold (PPT) $<4.42\text{ g}$ is indicative of the existence of altered sensory function (68). Thermal pain threshold (TPT) assessment with temperature in 32°C baselines and an increasing/decreasing temperature at a rate of 1.5°C/s is used in clinical settings (ICC >0.55) (69). In cases of non-SCD pain, specifically osteoarthritis of the knee, the PPT increasing pressure at a rate of 0.5 kgf/s has a good diagnostic reliability value varying according to the evaluated joint site (ICC: 0.64–0.73) (70).

Finally, another way of assessing central sensitization in individuals with SCD uses its typical clinical criteria checklist (71) developed by a consensus of experts. Although this checklist is non-specific to SCD individuals, it is also useful for clinicians and healthcare professionals because it helps identify signs and symptoms characteristic of central sensitization, such as pain disproportionate to injury, disproportionate aggravating/easing factors, and psychosocial symptoms, and diffuse palpation. These discriminative items indicate the presence of central pain sensitization with excellent accuracy values (sensitivity 91.8%, specificity 97.7%, positive predictive value 91.8, and negative predictive value 97.7) (72). Thus, using these instruments during the evaluation of SCD individuals with CJP may help in the more precise knowledge of the mechanism underlying the patient's pain. This clinical criteria checklist provides a basis for better clinical decision-making and possibly less chance of non-adherence to the proposed treatment.

Motor control modifications and cortical reorganization in CJP

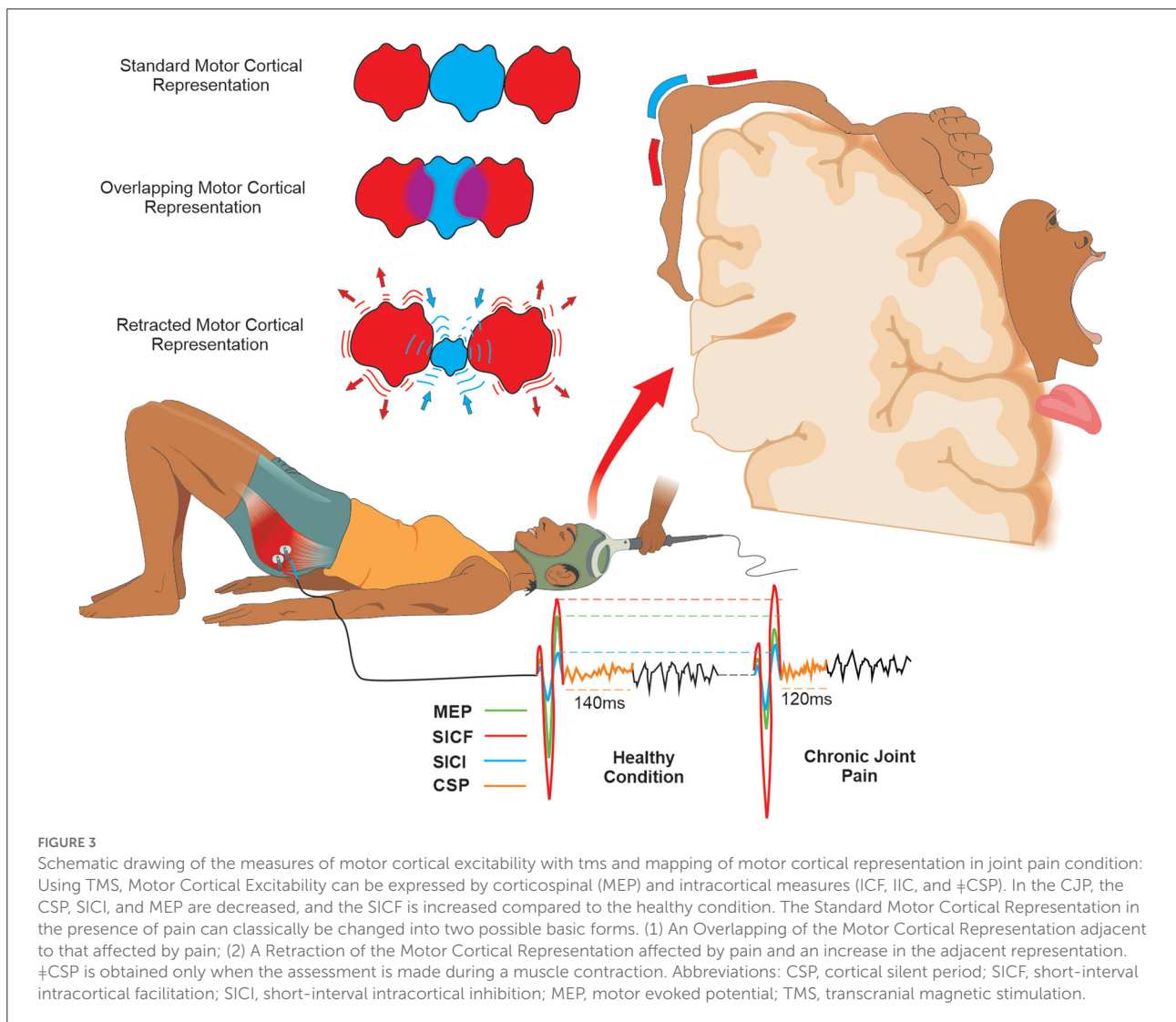
In the face of pain, the neuromusculoskeletal system undergoes adaptive motor modifications that affect motor control and joint mechanics. These modifications have been studied over time due to the importance of their understanding for both clinicians and researchers. Therefore, one theoretical model (73) was established to clarify the interaction between pain and motor control changes making the following propositions: Firstly, the adaptation of the motor control to pain is a consequence of the redistribution of the activity within and between muscles. Secondly, the change in mechanical behavior

initially has a protective function of preventing further pain or injury. However, in the long term, it involves changes in various levels of the nervous system, which lead to increased joint load, decreased mobility, and variability of movement and muscle weakness (73).

In the presence of CJP, motor and sensory primary cortical reorganization are associated with motor control impairment. This cortical reorganization has been demonstrated in non-SCD adult individuals with low back pain (74, 75), chronic lateral epicondylalgia (76), osteoarthritis of the knee (77), and chronic patellofemoral pain (78), but there is no study with pediatric individuals. This cortical reorganization is expressed through the overlap (i.e., blurring) or retraction in the areas of somatotopic representation of the motor homunculus. The greater the cortical reorganization, the greater the perpetuation of the pain (77).

The intracortical inhibitory system, modulated by tonic GABAergic activity, plays an important role in the development of cortical somatotopic representations. This specific function is due to mechanisms that differentiate cortical efferent motor actions, either by facilitating muscle activation during a motor task or by inhibiting undesirable muscular activations (79). Although changes in intracortical inhibition are not a consensus (80), intracortical inhibitory dysfunction mediated by GABAergic connections has been demonstrated in individuals with chronic pain (81) through Transcranial Magnetic Stimulation (TMS), a technique that has been often used to assess cortical connectivity.

Transcranial magnetic stimulation also allows the evaluation of muscles' cortical representations through cortical mapping. Briefly, cortical mapping through TMS is made using a set of pulses with intensity fixed in accord with a percentage of the maximal stimulator output (82). This set of pulses



should be applied at various scalp sites using a figure-of-eight coil and a spatial coordinate system referenced to the vertex (83), and the amplitude of MEPs evoked in contralateral muscles is measured (82). However, although the assessment of cortical mapping through TMS can be useful in clinical settings, there are no studies evaluating its diagnostic reliability (Figure 3).

In SCD individuals, CJP is possibly associated with maladaptive motor behavior and cortical representation changes due to their chronic and disabling pain (7). The changes in functional connectivity of the structures are involved in the descending inhibitory control of nociceptive information in individuals with SCD (34) and can be associated with intracortical inhibition (84). Thus, although TMS evaluation is not specific to SCD individuals, clinicians and healthcare professionals should be used to investigate these possible cortical alterations both in adult and pediatric SCD individuals with CJP.

Arthrogenic muscle inhibition and CJP

It is common that after joint injuries, there is the presence of weakness in the adjacent involved musculature. The possible cause for this muscle weakness is the presence of a central reflex inhibition that can provoke a failure to fully recruit the motor units and/or a suboptimal firing of the motor units that are recruited (85), preventing the complete activation of the surrounding musculature to the injured joint during a maximal voluntary muscular contraction. This phenomenon has been called Arthrogenic Muscle Inhibition (AMI) (86).

Arthrogenic muscle inhibition can be interpreted as a mechanism of physiological protection to prevent new lesions and potentiation of tissue repair (87). However, AMI may persist for several months or even years after injury (88). This persistence may compromise the rehabilitation process by negatively impacting strengthening protocols, thus, contributing to injury progression and

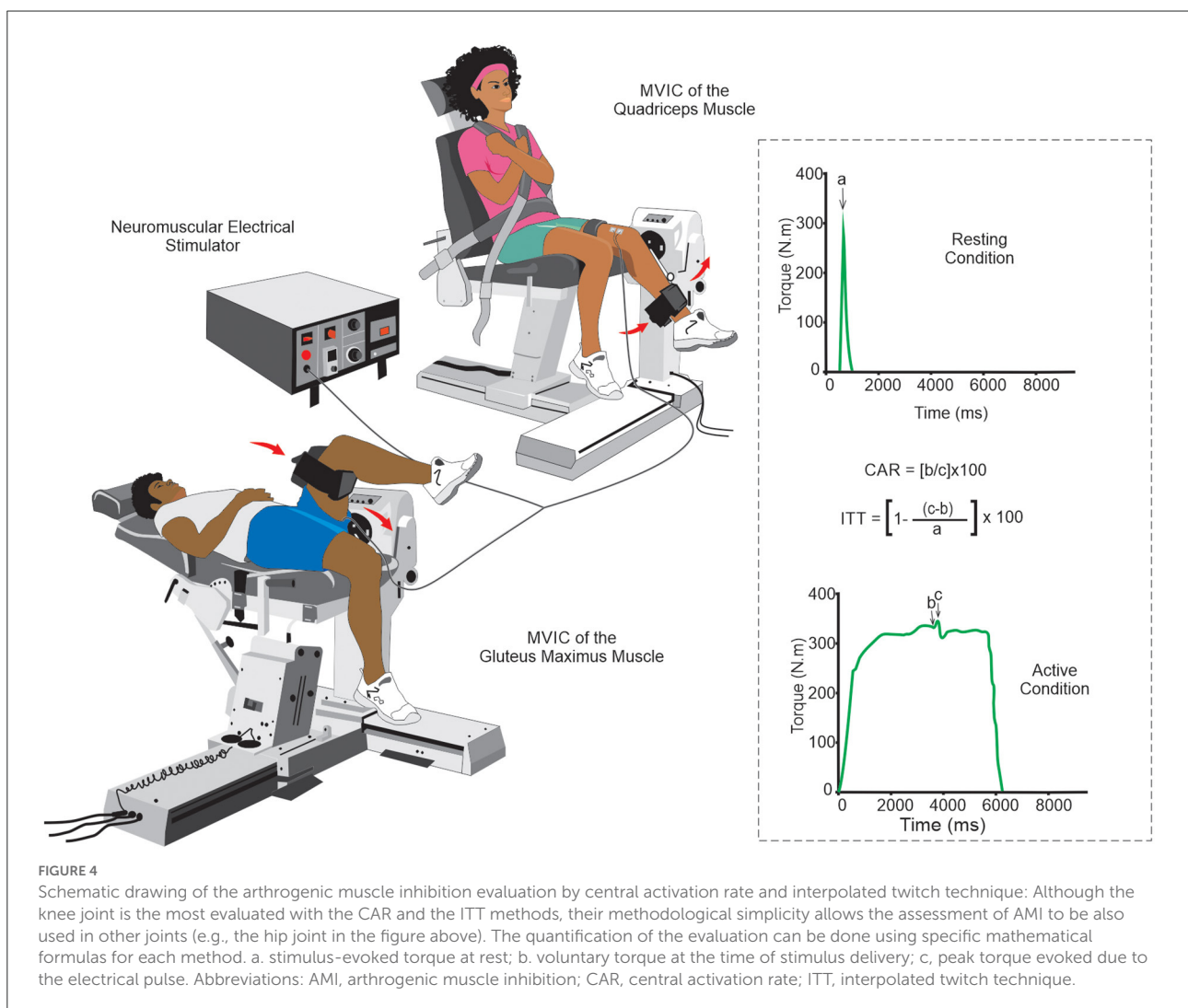


TABLE 1 Summary of the main central nervous system maladaptive changes, assessment methods, clinical interpretation, and diagnostic reliability that can be used in CJP related to sickle cell disease.

CNS maladaptive changes in chronic joint pain	Assessment methods or instruments	Clinical interpretation	Diagnostic reliability
Insufficiency of descending inhibitory control	<ul style="list-style-type: none"> Conditioned pain modulation (42) 	<ul style="list-style-type: none"> piPST1 > piPST2 = Descending inhibitory control is functioning piPST1 < piPST2 = Descending inhibitory control system is faulty 	<ul style="list-style-type: none"> PST: Pressure threshold meter (ICC >0.75) PCST: Hot water in 46.5°C (ICC = 0.79)
Central sensitization	<ul style="list-style-type: none"> Central sensitization inventory (60,61) Quantitative sensory test (68-70) Clinical criteria checklist (71,72) 	<ul style="list-style-type: none"> Severity ratings: Subclinical (≤ 29) Mild (30-39) Moderate (40-49) Severe (50-59) Extreme (≥ 60) TPT to cold <17.01°C and heat <43.91°C are indicative of impaired nerve sensitivity PPT <4.42 g is indicative of the existence of an altered sensory function Pain disproportionate to injury disproportionate aggravating/easing factors; psychosocial symptoms; diffuse palpation 	<ul style="list-style-type: none"> Cut-off at 40 points: Sensitivity (81%) Specificity (75%) Positive predictive value (2.93) Negative predictive value (0.52) TPT: 32°C baselines with decreased/increased temperature at a rate of 1.5°C/s (ICC >0.55) PPT: Increasing pressure at a rate of 0.5 kgf/s (ICC: 0.64–0.73) Sensitivity (91.8%) Specificity (97.7%) Positive predictive value (91.9) Negative predictive value (97.7)
Modifications of motor control and cortical reorganization	<ul style="list-style-type: none"> Cortical mapping by transcranial magnetic stimulation (77) 	<ul style="list-style-type: none"> There is an overlap (blurring) or retraction in the areas of somatotopic representation of the motor cortex 	
Arthrogenic muscle inhibition	<ul style="list-style-type: none"> Central activation rate (91,96) Interpolated Twitch Technique (85,87) 	<ul style="list-style-type: none"> When the central activation rate is below 95%, it is an indication that there are muscle fibers that are not being activated by central neural pathways The higher the proportion, the greater the number of muscle fibers that are not centrally activated 	<ul style="list-style-type: none"> CAR: Within- measurement (ICC = 0.94) Between-measurement (ICC = 0.86) ITT: Within measurement (ICC = 0.89)

Abbreviations: CAR, Central Activation Rate; ITT, Interpolated Twitch Technique; ICC, Intraclass Correlation Coefficient; PCST, Painful Conditioning Stimulus Test; piPST1, pain intensity of first Painful Stimulus Test; piPST2, pain intensity of second Painful Stimulus Test; PST, Painful Stimulus Test; TPT, Thermal Pain Threshold; PPT, Pressure Pain Threshold.

associated dysfunction (87). Common conditions such as joint pain, ligamentous laxity, and joint effusion are potential factors that facilitate the establishment of AMI (86).

In the AMI, there is an alteration of the firing of the joint receptors that send signals for the medullary inhibitory interneurons, causing inhibition of the activity of the alpha motoneurons and, consequently, the musculature involved in the affected joint (87). Joint pain may contribute to the AMI due to the alteration of the excitability of the flexor reflex pathway (86), which has the characteristic of facilitating the flexor and inhibiting the extensor muscles in the region surrounding the painful joint (89). In addition, joint pain in the knee has been associated with decreased muscle activation of the quadriceps (90, 91).

Although a systematic review has shown that the mechanisms of AMI are mostly studied in knee joint injuries (91), it may also be observed in individuals with pathologies in the hip. In this condition, AMI may be represented by a decrease in Gluteus maximus activation during extension activity in pronation (92). In this sense, as the most affected joint in SCD is the hip due to avascular osteonecrosis (7), the healthcare professional must be aware of the possibility of AMI playing an important role in this condition. However, many SCD individuals are likely quite physically deconditioned due to limited physical activity because of fatigue (93) or concerns about triggering vaso-occlusive crises after physical activity (94). This clinical characteristic in SCD individuals can make AMI assessment challenging because of the potential confounding biases related to physical deconditioning or

structural musculoskeletal alterations, especially in bilateral affections. On the other hand, in unilateral affections, these confounding biases can be minimized by comparison with the unaffected side. To date, no studies have evaluated AMI mechanisms in both adults and pediatric SCD individuals, and in future studies, the impact of physical deconditioning on AMI assessment should be better clarified.

In the clinical setting, AMI can be assessed using two quantitative methods: the Central Activation Rate (CAR) and the Interpolated Twitch Technique (ITT) (85, 91, 95). In both methods, the individual is asked to make a maximal voluntary isometric contraction (MVIC), and the force/torque generated by the muscle is registered. Then, when the force/torque plateau is reached, a maximal or supramaximal electrical stimulus is introduced. However, in the ITT method, this electrical stimulus can also be made initially with the muscle at rest (85, 91, 95). For electrical stimulus, 10 pulses, 100 Hz, 200 μ s pulse duration, and 400 V appear to be a reliable stimulation parameters for muscle contraction (85). Individuals with CAR >95% have a muscle fully activated by voluntary central stimulation, and those with less than that have some central muscle inactivation (91). In the ITT method, the higher the index score, the greater the number of fibers that are not centrally activated (85). Both methods seem simple, easily performed, and therefore feasible in clinical practice and research (Figure 4).

When comparing CAR and ITT in the capacity to estimate the quadriceps muscle activation, there was a significant variation between methods, with an estimated difference of up to 5.5% (85). In addition, it is suggested that ITT is a more accurate measure since the CAR might overestimate voluntary muscle activation (85). Some articles have assessed and reported good reliability of these methods in knee joints (96, 97), and the CAR method was found reliable within- (ICC = 0.94) and between-measurement sessions (ICC = 0.86) (96) while in the ITT method the reliability within measures was (ICC = 0.89) (97). Unfortunately, no studies evaluated the diagnostic value of these methods in joints frequently affected by SCD individuals, such as the hip, shoulder, and elbow. Although both CAR and ITT are not specific to SCD individuals, these methods should be used in clinical practice to evaluate CJP in SCD individuals.

Final remarks and conclusion

Chronic joint pain in patients with SCD might be related to maladaptive plasticity in the CNS, as it shares mechanisms with many known joint pathologies. Some of these maladaptive changes in the CNS are already known and include mainly poor descending inhibitory control, central sensitization, motor control impairments, reorganization of the motor cortex motor, and inhibition of induced maximal voluntary contraction. These

changes may be assessed by a set of tests and/or questionnaires that are already available and could be useful in the clinical assessment and research in SCD. In the clinical setting, every healthcare professional can measure these maladaptive changes through instruments and methods with good diagnostic reliability (Table 1). These maladaptive plasticity changes may contribute to persistent pain in SCD, but there is a substantial lack of evidence regarding this aspect. However, future studies should be performed to elucidate and confirm these possible maladaptive changes in the nervous system in SCD individuals related to CJP to understand and treat the pain in those patients with better results.

Author contributions

All authors contributed to the development of the article in specific activities, such as planning, designing, and drafting/revising the final manuscript.

Funding

This study was funded by the Research Support Foundation of the State of Bahia (FAPESB) through the Support Program for Emerging Center, 8133/2014 (Process: PNE0020/2014). TL is supported by a Ph.D. scholarship from FAPESB (Process: BOL1492/2018). AB receives a scholarship from Brazilian National Council for Scientific Development (CNPq) (Process: 305539/2021-3) and also supported by CEPID/BRAINN-The Brazilian Institute of Neuroscience and Neurotechnology (Process: 13/07559-3). JS is supported by an MSc scholarship from the Coordination for the Improvement of Higher Education Personnel (CAPES).

Acknowledgments

The authors wish to thank the graphic designer Davi dos Reis Lopes for his help in the article's illustrations. Also, the author gives thanks to Social Science Research Network (SSRN) for the dissemination of this paper through preprint publication this paper (98).

Conflict of interest

The authors declare that the research was conducted in the absence of any commercial or financial relationships that could be construed as a potential conflict of interest.

Publisher's note

All claims expressed in this article are solely those of the authors and do not necessarily represent those of their affiliated

organizations, or those of the publisher, the editors and the reviewers. Any product that may be evaluated in this article, or

claim that may be made by its manufacturer, is not guaranteed or endorsed by the publisher.

References

- Ballas SK. Pathophysiology and principles of management of the many faces of the acute vaso-occlusive crisis in patients with sickle cell disease. *Eur J Haematol.* (2015) 95:113–23. doi: 10.1111/ejh.12460
- Gupta K, Jahagirdar O, Gupta K. Targeting pain at its source in sickle cell disease. *Am J Physiol Regul Integr Comp Physiol.* (2018) 315:R104–12. doi: 10.1152/ajpregu.00021.2018
- Ballas SK, Darbari DS. Review/overview of pain in sickle cell disease. *Complement Ther Med.* (2020) 49:102327. doi: 10.1016/j.ctim.2020.102327
- Hernigou P, Habibi A, Bachir D, Galacteros F. The natural history of asymptomatic osteonecrosis of the femoral head in adults with sickle cell disease. *J Bone Joint Surg Am.* (2006) 88:2565–72. doi: 10.2106/JBJS.E.01455
- Caracas Mda S, Jales SP, Jales Neto LH, da Silva Castro JC, Suganuma LM, Fonseca GH, et al. Temporomandibular joint arthritis in sickle cell disease: a case report. *Oral Surg Oral Med Oral Pathol Oral Radiol.* (2013) 115:e31–5. doi: 10.1016/j.oooo.2012.05.018
- Hughes M, Akram Q, Rees DC, Jones AK. Haemoglobinopathies and the rheumatologist. *Rheumatology.* (2016) 55:2109–18. doi: 10.1093/rheumatology/kew042
- Flouzat-Lachaniette CH, Roubineau F, Heyberger C, Bouthors C, Hernigou P. Multifocal osteonecrosis related to corticosteroid: ten years later, risk of progression and observation of subsequent new osteonecroses. *Int Orthop.* (2016) 40:669–72. doi: 10.1007/s00264-015-3060-8
- Ezenwa MO, Molokie RE, Wang ZJ, Yao Y, Suarez ML, Pullum C, et al. Safety and utility of quantitative sensory testing among adults with sickle cell disease: indicators of neuropathic pain? *Pain Pract.* (2016) 16:282–93. doi: 10.1111/papr.12279
- Dyal BW, Ezenwa MO, Yoon SL, Fillingim RB, Yao Y, Schlaeger JM, et al. Relationship of pain quality descriptors and quantitative sensory testing: sickle cell disease. *Nurs Res.* (2019) 68:365–73. doi: 10.1097/NNR.0000000000000375
- Campbell CM, Moscou-Jackson G, Carroll CP, Kiley K, Haywood C Jr, Lanzkron S, et al. An evaluation of central sensitization in patients with sickle cell disease. *J Pain.* (2016) 17:617–27. doi: 10.1016/j.jpain.2016.01.475
- Bedson J, Croft PR. The discordance between clinical and radiographic knee osteoarthritis: a systematic search and summary of the literature. *BMC Musculoskelet Disord.* (2008) 9:116. doi: 10.1186/1471-2474-9-116
- Beetsma AJ, Reezigt RR, Paap D, Reneman MF. Assessing future health care practitioners' knowledge and attitudes of musculoskeletal pain; development and measurement properties of a new questionnaire. *Musculoskelet Sci Pract.* (2020) 50:102236. doi: 10.1016/j.msksp.2020.102236
- Bouri F, El Ansari W, Mahmoud S, Elhessy A, Al-Ansari A, Al-Dosari MAA. Orthopedic professionals' recognition and knowledge of pain and perceived barriers to optimal pain management at five hospitals. *Healthcare.* (2018) 6:98. doi: 10.3390/healthcare6030098
- Al-Quliti KW, Alamri MS. Assessment of pain. Knowledge, attitudes, and practices of health care providers in Almadinah Almunawwarah, Saudi Arabia. *Neurosciences.* (2015) 20:131–6. doi: 10.17712/nsj.2015.2.20140546
- DeSantana JM, Souza JBd, Reis FJJd, Gosling AP, Paranhos E, Barboza HFG, et al. Pain curriculum for graduation in physiotherapy in Brazil. *Rev Dor.* (2017) 18:72–8. doi: 10.5935/1806-0013.20170015
- Raja SN, Carr DB, Cohen M, Finnerup NB, Flor H, Gibson S, et al. The revised international association for the study of pain definition of pain: concepts, challenges, and compromises. *Pain.* (2020) 161:1976–82. doi: 10.1097/j.pain.0000000000001939
- Cox JJ, Sheynin J, Shorer Z, Reimann F, Nicholas AK, Zubovic L, et al. Congenital insensitivity to pain: novel SCN9A missense and in-frame deletion mutations. *Hum Mutat.* (2010) 31:E1670–86. doi: 10.1002/humu.21325
- Yawn BP, Buchanan GR, Afenyi-Annan AN, Ballas SK, Hassell KL, James AH, et al. Management of sickle cell disease: summary of the 2014 evidence-based report by expert panel members. *JAMA.* (2014) 312:1033–48. doi: 10.1001/jama.2014.10517
- McDougall JJ. Arthritis and pain. Neurogenic origin of joint pain. *Arthritis Res Ther.* (2006) 8:220. doi: 10.1186/ar2069
- Havelin J, King T. Mechanisms underlying bone and joint pain. *Curr Osteoporos Rep.* (2018) 16:763–71. doi: 10.1007/s11914-018-0493-1
- Schaible HG, Schmelz M, Tegeder I. Pathophysiology and treatment of pain in joint disease. *Adv Drug Deliv Rev.* (2006) 58:323–42. doi: 10.1016/j.addr.2006.01.011
- Julius D. TRP channels and pain. *Annu Rev Cell Dev Biol.* (2013) 29:355–84. doi: 10.1146/annurev-cellbio-101011-155833
- Zieglgansberger W. Substance P and pain chronicity. *Cell Tissue Res.* (2019) 375:227–41. doi: 10.1007/s00441-018-2922-y
- Michaels LA, Ohene-Frempong K, Zhao H, Douglas SD. Serum levels of substance P are elevated in patients with sickle cell disease and increase further during vaso-occlusive crisis. *Blood.* (1998) 92:3148–51. doi: 10.1182/blood.V92.9.3148
- Brandow AM, Wandersee NJ, Dasgupta M, Hoffmann RG, Hillery CA, Stucky CL, et al. Substance P is increased in patients with sickle cell disease and associated with haemolysis and hydroxycarbamide use. *Br J Haematol.* (2016) 175:237–45. doi: 10.1111/bjh.14300
- Aguilar C, Vichinsky E, Neumayr L. Bone and joint disease in sickle cell disease. *Hematol Oncol Clin North Am.* (2005) 19:929–41. doi: 10.1016/j.hoc.2005.07.001
- Zhuo M. Plasticity of NMDA receptor NR2B subunit in memory and chronic pain. *Mol Brain.* (2009) 2:4. doi: 10.1186/1756-6606-2-4
- Apkarian AV, Bushnell MC, Treede RD, Zubieta JK. Human brain mechanisms of pain perception and regulation in health and disease. *Eur J Pain.* (2005) 9:463–84. doi: 10.1016/j.ejpain.2004.11.001
- Ossipov MH, Dussor GO, Porreca F. Central modulation of pain. *J Clin Invest.* (2010) 120:3779–87. doi: 10.1172/JCI43766
- Millan MJ. Descending control of pain. *Prog Neurobiol.* (2002) 66:355–474. doi: 10.1016/S0301-0082(02)00009-6
- Vanegas H, Schaible HG. Descending control of persistent pain: inhibitory or facilitatory? *Brain Res Brain Res Rev.* (2004) 46:295–309. doi: 10.1016/j.brainresrev.2004.07.004
- Kosek E, Ordeberg G. Lack of pressure pain modulation by heterotopic noxious conditioning stimulation in patients with painful osteoarthritis before, but not following, surgical pain relief. *Pain.* (2000) 88:69–78. doi: 10.1016/S0304-3959(00)00310-9
- Campbell CM, Carroll CP, Kiley K, Han D, Haywood C Jr, Lanzkron S, et al. Quantitative sensory testing and pain-evoked cytokine reactivity: comparison of patients with sickle cell disease to healthy matched controls. *Pain.* (2016) 157:949–56. doi: 10.1097/j.pain.0000000000000473
- Case M, Zhang H, Mundahl J, Datta Y, Nelson S, Gupta K, et al. Characterization of functional brain activity and connectivity using EEG and fMRI in patients with sickle cell disease. *Neuroimage Clin.* (2017) 14:1–17. doi: 10.1016/j.nicl.2016.12.024
- Williams AE, Heitkemper M, Self MM, Czyzewski DI, Shulman RJ. Endogenous inhibition of somatic pain is impaired in girls with irritable bowel syndrome compared with healthy girls. *J Pain.* (2013) 14:921–30. doi: 10.1016/j.jpain.2013.03.003
- Goffaux P, Lafrenaye S, Morin M, Patural H, Demers G, Marchand S. Preterm births: can neonatal pain alter the development of endogenous gating systems? *Eur J Pain.* (2008) 12:945–51. doi: 10.1016/j.ejpain.2008.01.003
- Nir RR, Yarnitsky D. Conditioned pain modulation. *Curr Opin Support Palliat Care.* (2015) 9:131–7. doi: 10.1097/SPC.0000000000000126
- King CD, Wong F, Currie T, Mauderli AP, Fillingim RB, Riley JL 3rd. Deficiency in endogenous modulation of prolonged heat pain in patients with irritable bowel syndrome and temporomandibular disorder. *Pain.* (2009) 143:172–8. doi: 10.1016/j.pain.2008.12.027
- Arendt-Nielsen L, Nie H, Laursen MB, Laursen BS, Madeleine P, Simonsen OH, et al. Sensitization in patients with painful knee osteoarthritis. *Pain.* (2010) 149:573–81. doi: 10.1016/j.pain.2010.04.003

40. Ram KC, Eisenberg E, Haddad M, Pud D. Oral opioid use alters DNIC but not cold pain perception in patients with chronic pain - new perspective of opioid-induced hyperalgesia. *Pain*. (2008) 139:431–8. doi: 10.1016/j.pain.2008.05.015
41. Tousignant-Laflamme Y, Page S, Goffaux P, Marchand S. An experimental model to measure excitatory and inhibitory pain mechanisms in humans. *Brain Res*. (2008) 1230:73–9. doi: 10.1016/j.brainres.2008.06.120
42. Kennedy DL, Kemp HI, Ridout D, Yarnitsky D, Rice AS. Reliability of conditioned pain modulation: a systematic review. *Pain*. (2016) 157:2410–9. doi: 10.1097/j.pain.0000000000000689
43. Kosek E, Cohen M, Baron R, Gebhart GF, Mico JA, Rice AS, et al. Do we need a third mechanistic descriptor for chronic pain states? *Pain*. (2016) 157:1382–6. doi: 10.1097/j.pain.0000000000000507
44. Pain IASo. *Task Force on Taxonomy: IASP Terminology*. (2017). Available online at: <https://www.iasp-pain.org/terminology?#Nociplasticpain> (accessed February 15, 2021).
45. Brummett C, Clauw D, Harris R, Harte S, Hassett A, Williams D. We agree with the need for a new term but disagree with the proposed terms. *Pain*. (2016) 157:2876. doi: 10.1097/j.pain.0000000000000717
46. Granan LP. We do not need a third mechanistic descriptor for chronic pain states! Not yet. *Pain*. (2017) 158:179. doi: 10.1097/j.pain.0000000000000735
47. Aydede M, Shriver A. Recently introduced definition of “nociplastic pain” by the international association for the study of pain needs better formulation. *Pain*. (2018) 159:1176–7. doi: 10.1097/j.pain.0000000000001184
48. Schaible HG, Richter F, Ebersberger A, Boettger MK, Vanegas H, Natura G, et al. Joint pain. *Exp Brain Res*. (2009) 196:153–62. doi: 10.1007/s00221-009-1782-9
49. Kucyi A, Davis KD. The dynamic pain connectome. *Trends Neurosci*. (2015) 38:86–95. doi: 10.1016/j.tins.2014.11.006
50. Baliki MN, Mansour AR, Baria AT, Apkarian AV. Functional reorganization of the default mode network across chronic pain conditions. *PLoS ONE*. (2014) 9:e106133. doi: 10.1371/journal.pone.0106133
51. Zempsky WT, Stevens MC, Santanelli JP, Gaynor AM, Khadka S. Altered functional connectivity in sickle cell disease exists at rest and during acute pain challenge. *Clin J Pain*. (2017) 33:1060–70. doi: 10.1097/AJP.0000000000000492
52. Darbari DS, Hampson JP, Ichescio E, Kadom N, Vezina G, Evangelou I, et al. Frequency of hospitalizations for pain and association with altered brain network connectivity in sickle cell disease. *J Pain*. (2015) 16:1077–86. doi: 10.1016/j.jpain.2015.07.005
53. Karafin MS, Chen G, Wandersee NJ, Brandow AM, Hurley RW, Simpson P, et al. Chronic pain in adults with sickle cell disease is associated with alterations in functional connectivity of the brain. *PLoS ONE*. (2019) 14:e0216994. doi: 10.1371/journal.pone.0216994
54. Mayer TG, Neblett R, Cohen H, Howard KJ, Choi YH, Williams MJ, et al. The development and psychometric validation of the central sensitization inventory. *Pain Pract*. (2012) 12:276–85. doi: 10.1111/j.1533-2500.2011.00493.x
55. Luch Girbes E, Duenas L, Barbero M, Falla D, Baert IA, Meeus M, et al. Expanded distribution of pain as a sign of central sensitization in individuals with symptomatic knee osteoarthritis. *Phys Ther*. (2016) 96:1196–207. doi: 10.2522/ptj.20150492
56. Kim SH, Yoon KB, Yoon DM, Yoo JH, Ahn KR. Influence of centrally mediated symptoms on postoperative pain in osteoarthritis patients undergoing total knee arthroplasty: a prospective observational evaluation. *Pain Pract*. (2015) 15:E46–53. doi: 10.1111/papr.12311
57. O’Leary H, Smart KM, Moloney NA, Doody CM. Nervous system sensitization as a predictor of outcome in the treatment of peripheral musculoskeletal conditions: a systematic review. *Pain Pract*. (2017) 17:249–66. doi: 10.1111/papr.12484
58. Brandow AM, Stucky CL, Hillery CA, Hoffmann RG, Panepinto JA. Patients with sickle cell disease have increased sensitivity to cold and heat. *Am J Hematol*. (2013) 88:37–43. doi: 10.1002/ajh.23341
59. Molokie RE, Wang ZJ, Yao Y, Powell-Roach KL, Schlaeger JM, Suarez ML, et al. Sensitivities to thermal and mechanical stimuli: adults with sickle cell disease compared to healthy, pain-free African American controls. *J Pain*. (2019) 21:957–67. doi: 10.1016/j.jpain.2019.11.002
60. Neblett R, Hartzell MM, Cohen H, Mayer TG, Williams M, Choi Y, et al. Ability of the central sensitization inventory to identify central sensitivity syndromes in an outpatient chronic pain sample. *Clin J Pain*. (2015) 31:323–32. doi: 10.1097/AJP.0000000000000113
61. Neblett R, Hartzell MM, Mayer TG, Cohen H, Gatchel RJ. Establishing clinically relevant severity levels for the central sensitization inventory. *Pain Pract*. (2017) 17:166–75. doi: 10.1111/papr.12440
62. Caumo W, Antunes LC, Elkfury JL, Herbstrith EG, Busanello Sipmann R, Souza A, et al. The central sensitization inventory validated and adapted for a Brazilian population: psychometric properties and its relationship with brain-derived neurotrophic factor. *J Pain Res*. (2017) 10:2109–22. doi: 10.2147/JPR.S131479
63. Chiarotto A, Viti C, Sulli A, Cutolo M, Testa M, Piscitelli D. Cross-cultural adaptation and validity of the Italian version of the central sensitization inventory. *Musculoskelet Sci Pract*. (2018) 37:20–8. doi: 10.1016/j.msksp.2018.06.005
64. Walk D, Sehgal N, Moeller-Bertram T, Edwards RR, Wasan A, Wallace M, et al. Quantitative sensory testing and mapping: a review of nonautomated quantitative methods for examination of the patient with neuropathic pain. *Clin J Pain*. (2009) 25:632–40. doi: 10.1097/AJP.0b013e3181a68c64
65. Starkweather AR, Heineman A, Storey S, Rubia G, Lyon DE, Greenspan J, et al. Methods to measure peripheral and central sensitization using quantitative sensory testing: a focus on individuals with low back pain. *Appl Nurs Res*. (2016) 29:237–41. doi: 10.1016/j.apnr.2015.03.013
66. Zhu GC, Bottger K, Slater H, Cook C, Farrell SF, Hailey L, et al. Concurrent validity of a low-cost and time-efficient clinical sensory test battery to evaluate somatosensory dysfunction. *Eur J Pain*. (2019) 23:1826–38. doi: 10.1002/ejp.1456
67. Reimer M, Forstenpointner J, Hartmann A, Otto JC, Vollert J, Gierthmuhlen J, et al. Methods to bedside testing: a simple stratification approach for sensory phenotyping. *Pain Rep*. (2020) 5:e820. doi: 10.1097/PR9.0000000000000820
68. Brandow AM, Panepinto JA. Clinical interpretation of quantitative sensory testing as a measure of pain sensitivity in patients with sickle cell disease. *J Pediatr Hematol Oncol*. (2016) 38:288–93. doi: 10.1097/MPH.0000000000000532
69. Miller RE, Brown DS, Keith SW, Hegarty SE, Setty Y, Campbell CM, et al. Quantitative sensory testing in children with sickle cell disease: additional insights and future possibilities. *Br J Haematol*. (2019) 185:925–34. doi: 10.1111/bjh.15876
70. Jakorinne P, Haanpaa M, Arokoski J. Reliability of pressure pain, vibration detection, and tactile detection threshold measurements in lower extremities in subjects with knee osteoarthritis and healthy controls. *Scand J Rheumatol*. (2018) 47:491–500. doi: 10.1080/03009742.2018.1433233
71. Smart KM, Blake C, Staines A, Doody C. Clinical indicators of ‘nociceptive’, ‘peripheral neuropathic’, and ‘central’ mechanisms of musculoskeletal pain. A Delphi survey of expert clinicians. *Man Ther*. (2010) 15:80–7. doi: 10.1016/j.math.2009.07.005
72. Smart KM, Blake C, Staines A, Doody C. The discriminative validity of ‘nociceptive’, ‘peripheral neuropathic’, and ‘central sensitization’ as mechanisms-based classifications of musculoskeletal pain. *Clin J Pain*. (2011) 27:655–63. doi: 10.1097/AJP.0b013e318215f16a
73. Hodges PW. Pain and motor control: from the laboratory to rehabilitation. *J Electromyogr Kinesiol*. (2011) 21:220–8. doi: 10.1016/j.jelekin.2011.01.002
74. Tsao H, Danneels LA, Hodges PW. ISSLS prize winner: smudging the motor brain in young adults with recurrent low back pain. *Spine*. (2011) 36:1721–7. doi: 10.1097/BRS.0b013e31821c4267
75. Tsao H, Galea MP, Hodges PW. Reorganization of the motor cortex is associated with postural control deficits in recurrent low back pain. *Brain*. (2008) 131(Pt 8):2161–71. doi: 10.1093/brain/awn154
76. Schabrun SM, Hodges PW, Vicenzino B, Jones E, Chipchase LS. Novel adaptations in motor cortical maps: the relation to persistent elbow pain. *Med Sci Sports Exerc*. (2015) 47:681–90. doi: 10.1249/MSS.0000000000000469
77. Shanahan CJ, Hodges PW, Wrigley TV, Bennell KL, Farrell MJ. Organisation of the motor cortex differs between people with and without knee osteoarthritis. *Arthritis Res Ther*. (2015) 17:164. doi: 10.1186/s13075-015-0676-4
78. Te M, Baptista AF, Chipchase LS, Schabrun SM. Primary motor cortex organization is altered in persistent patellofemoral pain. *Pain Med*. (2017) 18:2224–34. doi: 10.1093/pm/pnx036
79. Liepert J, Wessel K, Schwenkreis P, Trillenber P, Otto V, Vorgerd M, et al. Reduced intracortical facilitation in patients with cerebellar degeneration. *Acta Neurol Scand*. (1998) 98:318–23. doi: 10.1111/j.1600-0404.1998.tb01741.x
80. Schwenkreis P, Scherens A, Ronnau AK, Hoffken O, Tegenthoff M, Maier C. Cortical disinhibition occurs in chronic neuropathic, but not in chronic nociceptive pain. *BMC Neurosci*. (2010) 11:73. doi: 10.1186/1471-2202-11-73
81. Parker RS, Lewis GN, Rice DA, McNair PJ. Is motor cortical excitability altered in people with chronic pain? A systematic review and meta-analysis. *Brain Stimul*. (2016) 9:488–500. doi: 10.1016/j.brs.2016.03.020
82. Rossini PM, Burke D, Chen R, Cohen LG, Daskalakis Z, Di Iorio R, et al. Non-invasive electrical and magnetic stimulation of the brain, spinal cord, roots and peripheral nerves: basic principles and procedures for routine clinical and research application. An updated report from an IFCN Committee. *Clin Neurophysiol*. (2015) 126:1071–107. doi: 10.1016/j.clinph.2015.02.001

83. Thickbroom GW, Byrnes ML, Mastaglia FL. Methodology and application of TMS mapping. *Electroencephalogr Clin Neurophysiol Suppl.* (1999) 51:48–54.
84. Tarrago Mda G, Deitos A, Brietzke AP, Vercelino R, Torres IL, Fregni F, et al. Descending control of nociceptive processing in knee osteoarthritis is associated with intracortical disinhibition: an exploratory study. *Medicine.* (2016) 95:e3353. doi: 10.1097/MD.0000000000003353
85. Krishnan C, Williams GN. Quantification method affects estimates of voluntary quadriceps activation. *Muscle Nerve.* (2010) 41:868–74. doi: 10.1002/mus.21613
86. Rice DA, McNair PJ. Quadriceps arthrogenic muscle inhibition: neural mechanisms and treatment perspectives. *Semin Arthritis Rheum.* (2010) 40:250–66. doi: 10.1016/j.semarthrit.2009.10.001
87. Hopkins JT, Ingersoll CD. Arthrogenic muscle inhibition: a limiting factor in joint rehabilitation. *J Sport Rehabil.* (2000) 9:135–59. doi: 10.1123/jsr.9.2.135
88. Becker R, Berth A, Nehring M, Awiszus F. Neuromuscular quadriceps dysfunction prior to osteoarthritis of the knee. *J Orthop Res.* (2004) 22:768–73. doi: 10.1016/j.orthres.2003.11.004
89. Lundberg A, Malmgren K, Schomburg ED. Reflex pathways from group II muscle afferents. I Distribution and linkage of reflex actions to alpha-motoneurons. *Exp Brain Res.* (1987) 65:271–81. doi: 10.1007/BF00236299
90. Stevens JE, Mizner RL, Snyder-Mackler L. Quadriceps strength and volitional activation before and after total knee arthroplasty for osteoarthritis. *J Orthop Res.* (2003) 21:775–9. doi: 10.1016/S0736-0266(03)00052-4
91. Hart JM, Pietrosimone B, Hertel J, Ingersoll CD. Quadriceps activation following knee injuries: a systematic review. *J Athl Train.* (2010) 45:87–97. doi: 10.4085/1062-6050-45.1.87
92. Freeman S, Mascia A, McGill S. Arthrogenic neuromusculature inhibition: a foundational investigation of existence in the hip joint. *Clin Biomech.* (2013) 28:171–7. doi: 10.1016/j.clinbiomech.2012.11.014
93. Ameringer S, Smith WR. Emerging bio behavioral factors of fatigue in sickle cell disease. *J Nurs Scholarsh.* (2011) 43:22–9. doi: 10.1111/j.1547-5069.2010.01376.x
94. Araujo CG, Resende MBS, Tupinambas JT, Dias R, Barros FC, Vasconcelos MCM, et al. Exercise testing in patients with sickle cell disease: safety, feasibility and potential prognostic implication. *Arq Bras Cardiol.* (2022) 118:565–75. doi: 10.36660/abc.20200437
95. Folland JP, Williams AG. Methodological issues with the interpolated twitch technique. *J Electromyogr Kinesiol.* (2007) 17:317–27. doi: 10.1016/j.jelekin.2006.04.008
96. Park J, Hopkins JT. Within- and between-session reliability of the maximal voluntary knee extension torque and activation. *Int J Neurosci.* (2013) 123:55–9. doi: 10.3109/00207454.2012.725117
97. Behrens M, Husmann F, Gube M, Felser S, Weippert M, Bruhn S, et al. Intersession reliability of the interpolated twitch technique applied during isometric, concentric, and eccentric actions of the human knee extensor muscles. *Muscle Nerve.* (2017) 56:324–7. doi: 10.1002/mus.25498
98. Lopes T, Ballas KS, Evelyn Rodrigues Souza Santana J, de Melo-Carneiro P, Becerra de Oliveira L, Nunes Sá K, et al. *Sickle Cell Disease Chronic Joint Pain: Clinical Assessment Based on Maladaptive Central Nervous System Plasticity.* (2020). Available online at: <https://ssrn.com/abstract=3745971> or <http://dx.doi.org/10.2139/ssrn.3745971> (accessed February 23, 2021).