

3-14-2022

Characterization of basal ganglia volume changes in the context of HIV and polysubstance use

Andrew J Monick
Thomas Jefferson University

Michelle R Joyce
Johns Hopkins University School of Medicine

Natasha Chugh
Johns Hopkins University School of Medicine

Jason A Creighton
Johns Hopkins University School of Medicine

Owen P Morgan
Johns Hopkins University School of Medicine

Follow this and additional works at: <https://jdc.jefferson.edu/medfp>



Part of [Open Access for additional authors](#), and the [Psychiatry Commons](#)

[Let us know how access to this document benefits you](#)

Recommended Citation

Monick, Andrew J; Joyce, Michelle R; Chugh, Natasha; Creighton, Jason A; Morgan, Owen P; Strain, Eric C; and Marvel, Cherie L, "Characterization of basal ganglia volume changes in the context of HIV and polysubstance use" (2022). *Department of Medicine Faculty Papers*. Paper 345.
<https://jdc.jefferson.edu/medfp/345>

This Article is brought to you for free and open access by the Jefferson Digital Commons. The Jefferson Digital Commons is a service of Thomas Jefferson University's [Center for Teaching and Learning \(CTL\)](#). The Commons is a showcase for Jefferson books and journals, peer-reviewed scholarly publications, unique historical collections from the University archives, and teaching tools. The Jefferson Digital Commons allows researchers and interested readers anywhere in the world to learn about and keep up to date with Jefferson scholarship. This article has been accepted for inclusion in Department of Medicine Faculty Papers by an authorized administrator of the Jefferson Digital Commons. For more information, please contact: JeffersonDigitalCommons@jefferson.edu.

Authors

Andrew J Monick, Michelle R Joyce, Natasha Chugh, Jason A Creighton, Owen P Morgan, Eric C Strain,
and Cherie L Marvel



OPEN

Characterization of basal ganglia volume changes in the context of HIV and polysubstance use

Andrew J. Monick¹, Michelle R. Joyce², Natasha Chugh², Jason A. Creighton², Owen P. Morgan^{2,3}, Eric C. Strain⁴ & Cherie L. Marvel^{2,4}✉

HIV and psychoactive substances can impact the integrity of the basal ganglia (BG), a neural substrate of cognition, motor control, and reward-seeking behaviors. This study assessed BG gray matter (GM) volume as a function of polysubstance (stimulant and opioid) use and HIV status. We hypothesized that comorbid polysubstance use and HIV seropositivity would alter BG GM volume differently than would polysubstance use or HIV status alone. We collected structural MRI scans, substance use history, and HIV diagnoses. Participants who had HIV (HIV +), a history of polysubstance dependence (POLY +), both, or neither completed assessments for cognition, motor function, and risk-taking behaviors ($N=93$). All three clinical groups showed a left-lateralized pattern of GM reduction in the BG relative to controls. However, in the HIV + /POLY + group, stimulant use was associated with increased GM volume within the globus pallidus and putamen. This surpassed the effects from opioid use, as indicated by decreased GM volume throughout the BG in the HIV-/POLY + group. Motor learning was impaired in all three clinical groups, and in the HIV + /POLY + group, motor learning was associated with increased caudate and putamen GM volume. We also observed associations between BG GM volume and risk-taking behaviors in the HIV + /POLY- and HIV-/POLY + groups. The effects of substance use on the BG differed as a function of substance type used, HIV seropositivity, and BG subregion. Although BG volume decreased in association with HIV and opioid use, stimulants can, inversely, lead to BG volume increases within the context of HIV.

Substance use presents a significant health concern among populations affected by human immunodeficiency virus (HIV). A recent review estimated that among an estimated 15.6 million injection drug users globally, 17.8% live with HIV infection¹. Among those who injected drugs, 82.9% specified opioids as a drug of choice and 33.0% reported stimulant use (with or without opioids). Drug use impacts disease progression among people living with HIV (PLWH)^{2,3} and elevates the risk of viral transmission through reduced adherence to antiretroviral therapy (ART) regimen⁴, more frequent unprotected penetrative sex^{5,6}, and needle-sharing⁷. Despite the high proportion of PLWH who use substances and those substances' effect on viral pathogenesis, the effects of substance use on the brain of HIV + individuals are ill-understood.

HIV degrades the permeability of the blood–brain barrier (BBB)⁸. Once inside the brain, the virus preferentially targets the basal ganglia (BG)^{9,10}, leading to volumetric reduction among the caudate, putamen, and globus pallidus^{9,11–14}. HIV has also been associated with other structural and functional changes to the BG, such as inflammation-related increases in white matter (WM)¹⁵ and disruption of frontostriatal circuits¹⁶. Underlying these changes to the BG in the early stages of HIV is the destruction of dopaminergic neurons¹⁰.

BG damage carries consequences for the motor, cognitive, and reward systems^{9,17–22}. At least some of these effects are due to dopaminergic deficits^{23–25}. Stimulants, including cocaine and methamphetamine, alter dopaminergic systems and appear to have mixed effects on the BG. Some studies have reported BG volume increases associated with stimulant use (e.g., due to neuroinflammation)^{17–22}. Jernigan et al.²², for instance, found that methamphetamine dependence was associated with volumetric gain in the BG and parietal cortex. The authors postulated that this change may be attributed to physiological processes spurred by stimulant use that secondarily increase BG volume, such as glial activation and neuritic growth. Still other studies have reported

¹Sidney Kimmel Medical College, Thomas Jefferson University, Philadelphia, PA 19107, USA. ²Department of Neurology, Johns Hopkins University School of Medicine, 1620 McElderry St., Reed Hall W102A, Baltimore, MD 21205, USA. ³Department of Psychology, Cornell University, Ithaca, NY 14853, USA. ⁴Department of Psychiatry and Behavioral Sciences, Johns Hopkins University School of Medicine, Baltimore, MD 21205, USA. ✉email: cmarvel1@jhmi.edu

	HIV-/POLY- (n=34)	HIV-/POLY+ (n=27)	HIV+/POLY- (n=17)	HIV+/POLY+ (n=15)	P-value
Age years (SD)	50.92 (12.6)	46.09(11.8)	57.28 (9.0)	56.53 (4.3)	0.129 ^{A-B} , 0.045 ^{A-C} , 0.100 ^{A-D} , 0.001 ^{B-C} , 0.002 ^{B-D} , 0.765 ^{C-D}
Sex M:F	19:15	15:12	16:1	9:6	0.980 ^{A-B} , 0.006 ^{A-C} , 0.788 ^{A-D} , 0.006 ^{B-C} , 0.780 ^{B-D} , 0.020 ^{C-D}
Education years (SD)	14.37 (2.1)	12.14 (1.5)	15.06 (2.0)	13.07 (2.2)	<0.001 ^{A-B} , 0.258 ^{A-C} , 0.062 ^{A-D} , <0.001 ^{B-C} , 0.159 ^{B-D} , 0.012 ^{C-D}
Handedness R:L:A	30:1:3	24:1:2	14:3:0	11:2:2	N.S
RAB (SD)	8.00 (4.7)	26.84 (13.7)	9.14 (3.1)	23.14 (11.7)	0.001 ^{A-B} , 0.951 ^{A-C} , <0.001 ^{A-D} , <0.001 ^{B-C} , 0.842 ^{B-D} , <0.001 ^{C-D}
BIS-11 (SD)	61.00 (16.5)	89.64 (11.3)	66.47 (13.3)	80.60 (19.6)	0.002 ^{A-B} , 0.573 ^{A-C} , 0.002 ^{A-D} , 0.002 ^{B-C} , 0.837 ^{B-D} , 0.011 ^{C-D}

Table 1. Demographics of the four study groups ($N=93$). When a variable contained data from all 4 groups, an ANOVA (or Pearson Chi-Square for categorical variables) was performed first in order to determine significant group differences. Statistics from post-hoc comparison are reported in the table as follows: A = HIV-/POLY-, B = HIV-/POLY+, C = HIV+/POLY-, D = HIV+/POLY+. Group comparisons are indicated by the two letters as marked (e.g., A-B indicates Group A vs. Group B). N.S. = not significant, per original omnibus test and no post-hoc comparisons were conducted; SD = standard deviation, M:F = male: female, R:L:A = right: left: ambidextrous. Boldface indicates significance, $p < .05$.

stimulant-associated volumetric decreases in the BG. Among participants who reported long-term cocaine use, Barros-Loscertales et al.²³ noted lower gray matter (GM) volume in the striatum, while Gardini & Venneri²⁴ found lower GM volume in the right putamen and insula relative to controls. Opioid use, by contrast, seems to consistently lead to BG GM reductions in the caudate, putamen, and GP^{25–27}. Given the strength of these independent effects, it is likely that the concomitant use of stimulants and opioids may exert complex effects over the dopaminergic system and the BG in PLWH.

The combined pathogenic effects on the BG from both HIV and psychoactive substances remain largely unknown. To our knowledge, only one study has examined BG volume in substance-dependent populations as a function of HIV²². Independent effects of methamphetamine were associated with increased GM; independent effects of HIV were associated with decreased GM. Effects from combined methamphetamine use and seropositivity were not observed, suggesting that opposing effects masked GM changes in the BG. Alterations to the BG among PLWH who use opioids, in contrast, have not been examined²⁸. It thus remains unclear whether the BG is differentially affected by stimulants and/or opioids within the context of HIV infection.

In this study, we examined the effects of HIV infection on BG GM with respect to real-world polysubstance use (defined as stimulant and opioid use). We hypothesized that protracted polysubstance use, comprising primarily opioids and stimulants, would be associated with BG changes in GM in PLWH. Such changes could manifest as volume decrease (e.g., neuronal atrophy), volume increase (e.g., neuroinflammation), or no net change (both factors interacting to mask effects). We also explored the relation between BG structural changes as a function of HIV and polysubstance use and cognition, motor function, and risk-associated behavior.

Methods and materials

Participants. *Recruitment and demographics.* Participants were seropositive and/or endorsed a history of polysubstance dependence. Recruitment included referrals from an HIV Neurology Service and HIV Dementia studies, flyer postings, and local methadone clinics. This study included four groups: (1) HIV-negative persons with no history of polysubstance dependence (HIV-/POLY-); (2) HIV-negative persons with a history of polysubstance dependence (HIV-/POLY+), (3) HIV-positive persons with no history of polysubstance dependence (HIV+/POLY-), and (4) HIV-positive persons with a history of polysubstance dependence (HIV+/POLY+) (See Table 1 for demographics).

Participants were screened for Axis I psychiatric disorders using the abbreviated Structured Clinical interview for DSM-IV AXIS I (SCID)²⁹ and excluded for a history of depression that was unrelated to substance use, psychotic disorders, post-traumatic stress disorder, or anxiety disorders. The SCID was also used to determine substance dependence. Participants who endorsed dependence upon cocaine and/or opioids were enrolled. Although some participants had used stimulants recreationally, they did not meet criteria for dependence and were placed in a POLY- group. Opioid-dependent participants who were receiving opioid maintenance therapy at the time of testing were treated with either methadone or buprenorphine for at least 2 months prior to the MRI. A modified Lifetime Drug Usage Questionnaire^{30–33} was used to quantify lifetime substance exposure. All participants were abstinent from illicit substances for at least 60 days prior to the MRI (per verbal report). Those who were undergoing opioid therapy provided urine drug screen results from their clinic for additional confirmation of drug-negative testing for the prior 60 days.

Urine drug testing occurred during pre-screening visits about one week prior to the MRI and again on the day of the MRI scan for the following substances: cocaine, amphetamine, methamphetamine, marijuana, methadone, opiates, phencyclidine, barbiturates, and benzodiazepines (Germaine Laboratories- 9 version Aimscreen™ Multi-Drug Urine Test DipDevice). Blood alcohol level was tested via breathalyzer. HIV serostatus was confirmed through blood testing or verified by medical record review.

	HIV-/POLY- (n=34)	HIV-/POLY+ (n=27)	HIV+/POLY- (n=17)	HIV+/POLY+ (n=15)	P-value
Estimated duration of HIV infection years (SD)	--	--	21.53 (8.7)	21.27 (8.1)	0.930
AIDS (CD4 < 200 cells/mm ³)	--	--	41.2	73.3	0.067
Current CD4 count (SD)	--	--	762.18 (304.2)	642.60 (314.0)	0.284
CD4 nadir (SD)	--	--	322.65 (282.8)	133.07 (204.6)	0.037
HIV viral load (n < 20 copies/mL)	--	--	15	13	0.471
Current or past exposure to EFV (n)	--	--	11	11	0.779
ART adherence lifetime (SD)	--	--	92.82 (9.8)	84.40 (13.3)	0.054

Table 2. Clinical variables across groups. Statistics are reported as in Table 1. SD = standard deviation. Significant values are in [bold], $p < 0.05$.

Participants were excluded if they had a history of neurological conditions (other than HIV), head injury resulting in prolonged loss of consciousness (> 5 min) and/or neurological sequelae, presence of untreated or uncontrolled chronic psychiatric illness, severe or unstable medical disorder, uncontrolled high blood pressure, hepatitis C status requiring immediate medication, pregnancy, or metal fragments or implants within the body.

Initially, 100 participants were enrolled in the study. Seven participants were excluded for a history of alcoholism (HIV-/POLY+, $n = 5$), positive urine drug test on the day of the scan (HIV-/POLY+, $n = 1$), and incidental finding on the MRI (HIV-/POLY+, $n = 1$). Thus, the final number of participants was $N = 93$: HIV-/POLY- ($n = 34$), HIV-/POLY+ ($n = 27$), HIV+/POLY- ($n = 17$), and HIV+/POLY+ ($n = 15$).

This study was approved by the Johns Hopkins Medicine Institutional Review Board. All methods were performed in accordance with the Declaration of Helsinki. All patients provided written informed consent.

HIV clinical data. HIV-related clinical information was abstracted from participants' medical records: duration of HIV infection, prior AIDS diagnosis ($CD4^+$ T-cell count ≤ 200 cells/mm³)³⁴, current (within 6 months) $CD4^+$ T-cell count and HIV viral load CD4 nadir, and exposure to efavirenz (EFV) antiretroviral medication (see Table 2). We expanded search parameters for three participants who did not have CD4 values available within 6 months of the visit to a measurement within 5 years (HIV+/POLY-, $n = 2$; HIV+/POLY+, $n = 1$). Undetectable viral loads were defined as < 20 copies/mL³⁵. Three participants surpassed this threshold (HIV+/POLY- (36 copies/mL); HIV+/POLY+ (23 and 97 copies/mL), but met criteria for viral suppression (defined as less than 200 copies/mL)^{35–37}.

Neuroimaging. *Image acquisition.* MRI scans were performed using a 3.0 Tesla Philips scanner (Intera, CX, Achevia, and Elition models) and 32-channel head coil. Structural images were collected using a sagittal magnetization prepared gradient-echo (MPRAGE) sequence: repetition time /echo time = 6.9/3.3 ms; field of view = 240×240 ; 170 slices; slice thickness 1.0 mm; 0 mm gap; flip angle = 8 degrees; voxel size = $0.75 \times 0.75 \times 1.0$ mm. Total scan duration was 6 min.

Image preprocessing. T1-weighted images were preprocessed following the voxel-based morphometry pipeline³⁸ within Statistical Parametric Mapping version 12 (SPM12)³⁹ using MATLAB R2020b⁴⁰. Images were reoriented to the anterior commissure and segmented into tissue classes. Individual templates were created from the GM segmentation images with diffeomorphic anatomical registration through exponentiated lie algebra (DARTEL) toolbox, warped into common Montreal Neurological Institute (MNI) space, Jacobian-scaled to estimate GM intensity, and smoothed with an 8 mm full-width at half-maximum (FWHM) kernel. Regions of interest (ROI) masks were coregistered and resliced to GM segmentation images (voxel size 1.5mm³).

Neuroimaging analyses and statistics. Total GM, WM, and cerebrospinal fluid (CSF) volumes were calculated using MATLAB get_totals script (http://www0.cs.ucl.ac.uk/staff/g.ridgway/vbm/get_totals.m) in SPM12. We summed these tissue volumes (GM, WM, and CSF) for total intracranial volume (TCV) values. GM volumes were similarly computed for the following ROIs: total BG, caudate, globus pallidus external (GPe), globus pallidus internal (GPe), putamen, subthalamic nucleus, substantia nigra pars compacta (SNc), substantia nigra pars reticulata (SNr), ventral tegmental area (VTA), and nucleus accumbens (NAc) for left and right hemispheres^{41,42}. Two-sampled t-tests were performed to analyze voxelwise group GM differences in total BG and ROIs between the HIV-/POLY- (controls) versus each of the three clinical groups. Multiple regression analyses were used to assess the relationship between GM volume in total BG and ROIs for the duration of opioid/stimulant use and opioid/stimulant frequency of use. Separate regression analyses were performed to examine motor learning and risk-associated behaviors. For t-tests and regressions, age, sex, education, TCV, and handedness were included as covariates. Whole-brain GM was used as an additional covariate in the between-group comparisons. For these GM measures, a threshold of $p < 0.05$ family-wise error (FWE) was used, and significant data from cluster sizes of ≥ 5 voxels were reported.

	HIV-/POLY- (n=34)	HIV-/POLY+ (n=27)	HIV+/POLY- (n=17)	HIV+/POLY+ (n=15)	P-value
Methadone dose (mg) (SD)	--	85.15 (32.3) n=19	--	87.50 (24.8) n=2	0.917
Suboxone dose (mg) (SD)	--	13.60 (6.7) n=5	--	12.00 (5.7) n=2	0.776
DOA stimulants (y) (SD)	23.00 (12.7) n=9	6.39 (8.3) n=23	13.50 (17.7) n=2	12.47 (7.4)	0.004 ^{A-B} , 0.583 ^{A-C} , 0.044 ^{A-D} , 0.671 ^{B-C} , 0.025 ^{B-D} , 0.874 ^{C-D}
DOU stimulants (y) (SD)	3.17 (7.7)	15.29 (12.7)	1.00 (3.6)	17.53 (9.5)	< 0.001 ^{A-B} , 0.179 ^{A-C} , < 0.001 ^{A-D} , < 0.001 ^{B-C} , 0.522 ^{B-D} , < 0.001 ^{C-D}
FOU stimulants (y) (SD)	0.40 (0.8)	2.97 (1.3)	0.18 (0.5)	3.06 (1.3)	< 0.001 ^{A-B} , 0.272 ^{A-C} , < 0.001 ^{A-D} , < 0.001 ^{B-C} , 0.835 ^{B-D} , < 0.001 ^{C-D}
DOA opioids (y) (SD)	--	2.46 (2.6) n=24	--	10.09 (6.4) n=11	< 0.001
DOU opioids (y) (SD)	--	16.99 (9.9)	--	11.80 (9.9)	0.193
FOU opioids (y) (SD)	--	3.34 (1.2)	--	2.64 (1.8)	0.134

Table 3. Stimulant and opioid variables across groups. Statistics are reported as in Table 1. Post-hoc comparisons included: A = HIV-/POLY-, B = HIV-/POLY+, C = HIV+/POLY-, D = HIV+/POLY+. DOA = duration of abstinence, DOU = duration of use, FOU = frequency of use, SD = standard deviation, mg = milligram, y = years. Significant values are in [bold], $p < 0.05$.

Task procedures. *Behavioral assessments.* Risk assessment battery (RAB). The Risk Assessment Battery (RAB)⁴³ is a 45-item, self-administered questionnaire comprised of two sub-scales of activity (drug and sex risk items) that have occurred within the past 30 days. Scores are combined to calculate a total for risky behaviors, with a maximum high-risk score of 40. [HIV-/POLY- ($n=17$), HIV-/POLY+ ($n=14$), HIV+/POLY- ($n=15$), and HIV+/POLY+ ($n=14$)].

Barratt impulsivity test (BIS-11). The Barratt Impulsivity Test (BIS-11) is a 30-item, self-administered questionnaire that assesses impulsive behavior⁴⁴. A total score was computed with a range of 30–120, where higher scores indicate greater impulsivity [HIV-/POLY- ($n=33$), HIV-/POLY+ ($n=24$), HIV+/POLY- ($n=16$), and HIV+/POLY+ ($n=15$)].

Motor and cognitive tasks. A subset of participants received motor, cognitive, and dual task paradigms following Kronemer and colleagues^{45,46}. (See also Supplementary Information for method details and group sample sizes per task). Participants performed a motor task that involved continuous drawing of “figure-8 s”, a cognitive task that involved working memory for letter sequences, and a combined motor-cognitive task that involved performance of both tasks simultaneously. Our primary outcomes of interest involved group effects and/or interactions.

Statistical analyses of behavioral, motor, and cognitive tasks. Duration and frequency of substance use values were extracted from the modified Lifetime Drug Usage Questionnaire^{30–33} (see Table 3). Duration of use was measured in years as the sum of all phases during which the participant was actively using a given substance. Frequency of use was measured on a five-point scale, wherein during an active phase: 1 = used at least once annually, 2 = used at least once monthly, 3 = used at least once weekly, 4 = used daily or near-daily, and 5 = used multiple times daily. We computed a weighted frequency of use by drug as the product of frequency of use (5-point scale) x phase duration (years), divided by the aggregate of all phases associated with that drug (years).

Independent samples t tests were used on normally distributed continuous variables. ANOVAs were used to compare three or more groups. Mauchly’s Test of Sphericity was applied to mixed-design ANOVAs and, when the assumption of sphericity was violated, a Greenhouse–Geisser correction was applied. Post-hoc Games-Howell tests were used following mixed-design ANOVAs that contained unequal sample sizes and variance. Pearson Chi-Square tests were used to compare categorical variables. Levene’s Test for Equality of Variances was used to identify unequal variances. Kruskal–Wallis H tests were used to compare ordinal data that did not follow a normal distribution or one-way ANOVAs with unequal variance, followed by post-hoc pairwise comparisons. Post-hoc Mann–Whitney tests were corrected for multiple comparisons (Bonferroni). Statistics were performed using IBM SPSS Statistics, Macintosh, version 27.0 (IBM Corp., Armonk, NY, USA).

Results

Cognitive and motor task results. *Cognitive task.* A mixed-design ANOVA was conducted with 6 (span: 3–8 letters) × 2 (condition: single vs. dual task) as within-subjects factors and 4 (group: HIV-/POLY-, HIV-/POLY+, HIV+/POLY-, and HIV+/POLY+) as a between-subjects factor (Fig. 1A). Results revealed an interaction of condition × group, $F(3, 58) = 3.13$, $p = 0.032$. Post-hoc tests indicated that the HIV+/POLY+ group performed less accurately than did the HIV+/POLY- group in the single task condition (See Supplement 1 for additional results).

Motor task. A mixed-design ANOVA was conducted with 8(trial: trials 1–8) × 2(condition: single vs. dual) as within-subjects factors and 4(group) as a between-subjects factor (Fig. 1B). Only the first eight trials of the dual

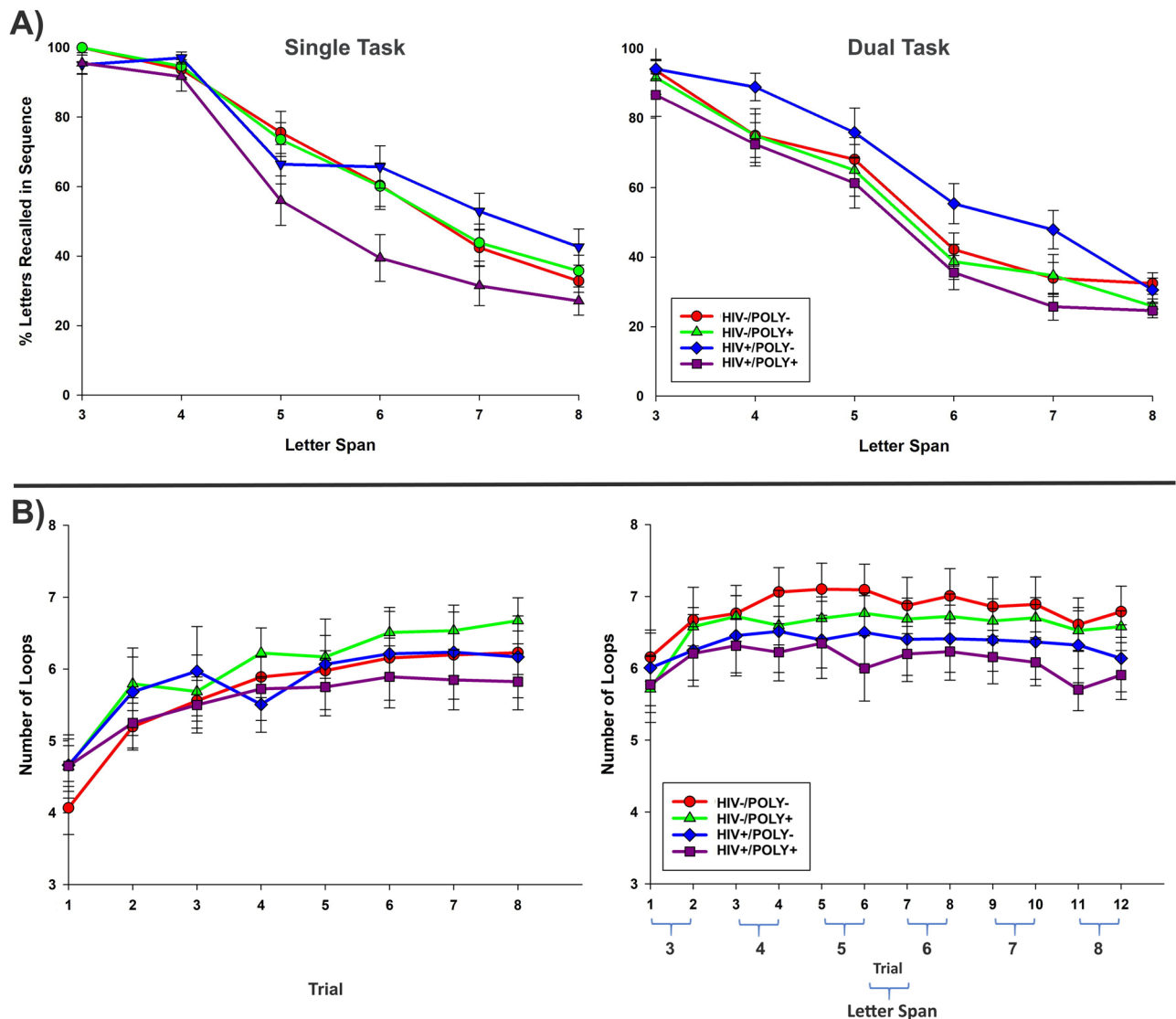


Figure 1. Working memory and loop drawing performance during single and dual task conditions. (A) The percent accuracy of letter spans recalled in sequence are reported across trials of increasing letter spans of 3–8 letters. Recall accuracy for letters decreased as the size of letter spans increased, especially in the dual task condition when working memory was performed in conjunction with a motor task. In the single task condition, the HIV +/POLY + group (purple) performed with less accuracy than did the HIV +/POLY - group (blue). (B) The number of loops is reported across each 5-s trial. Loop drawing frequency increased across trials, with most gains occurring in the single task condition. In the dual task condition, loop drawing was done in conjunction with a working memory task that increased cognitive load across trials. The HIV-/POLY - group (red) improved motor learning more than any other group did, suggesting that HIV and substance use history impacted performance. However, when HIV and POLY groups were examined collectively, the HIV + groups (blue plus purple) showed impaired motor learning, whereas the POLY + groups (green plus purple) did not. (Trials 9–12 of the dual task were not included in omnibus analysis). Bars denote one standard error.

task were included because we could not load an uneven number of trials into the ANOVA. Results revealed an interaction of trial \times group, $F(21, 392) = 2.02, p = 0.005$ (See Supplement 1 for additional results). Post-hoc tests indicated that the HIV-/POLY - showed a greater increase in loop drawing across trials (i.e., motor learning) than did all other groups. The remaining groups did not differ from one another.

To investigate how the HIV + groups performed regardless of substance dependence history, we conducted a mixed-design ANOVA with 8(trial) \times 2(condition) as within-subjects factors and 2(group: HIV - (collapsed across POLY - and POLY +) and HIV + (collapsed across POLY - and POLY +)) as a between-subjects factor. There was an interaction of trial \times group, $F(7, 406) = 5.01, p < 0.001$, indicating that the HIV + group showed a disproportionately slow rate of motor improvement across trials (See Supplement 1 for additional analyses). We also examined how POLY + groups performed regardless of HIV status. We conducted a mixed-design ANOVA with 8(trial) \times 2(condition) as within-subjects factors and 2(group: POLY - (collapsed across HIV - and HIV +) and POLY + (collapsed across HIV - and HIV +)) as a between-subjects factor. There was no main effect of group

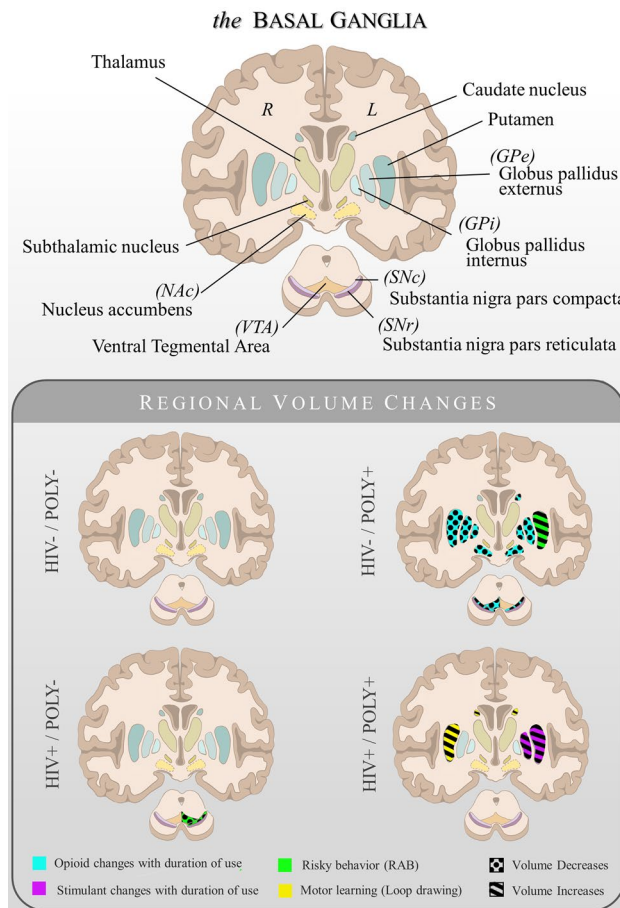


Figure 2. Summary of gray matter volume changes within the basal ganglia for each study group. Top: A coronal view schematic of the regions of interest examined within the basal ganglia and midbrain. L = left; R = right. Bottom: Colored regions indicate the locations within the basal ganglia that were associated with duration of substance use, motor learning, and risky behaviors. Patterns indicate the positive or negative direction of the association. Depictions may be compared with Fig. 3 and Table 4.

or additional 2-way or 3-way interactions, all $F < 0.80$, $p > 0.38$. Thus, groups did not differ in their motor performance as a function of substance dependence history. Taken together, these results indicated that HIV had a stronger impact on motor performance than did substance use.

Voxel-based morphometry results. To investigate changes in whole-brain GM volume, we ran statistical analyses between clinical groups and controls. A Levene's test for equality of variance indicated unequal variances between the groups, $F(3,89) = 4.48$, $p = 0.006$. When the Kruskal–Wallis test revealed that whole-brain GM significantly differed among groups, $H(3) = 11.5$, $p = 0.009$, post-hoc tests compared all pairs of groups. The whole-brain GM volumes of the HIV +/POLY- ($Mdn = 0.42$) and HIV +/POLY+ ($Mdn = 0.44$) groups were smaller than that of controls ($Mdn = 0.46$) [Controls vs. HIV +/POLY-: $U = 21.2$, Bonferroni correction $p = 0.048$; Controls vs. HIV +/POLY+: $U = 22.6$, Bonferroni correction $p = 0.042$]. None of the other comparisons were significant (all p -values > 0.31).

We then conducted regressions between BG ROIs GM volumes and performance on the cognitive and motor tasks (See Fig. 2). For the cognitive task, we selected each participant's mean score on the 5-letter span trial during single and dual task conditions because this span contained the highest cognitive load before group differences emerged (confirmed by one-way ANOVAs for each span length within each condition). For single and dual task cognitive paradigms, there were no significant associations between BG ROI GM volumes and cognitive performance (all p -values > 0.05 FWE). For the motor task, we entered the Δ between single task trials 8 and 1 into a regression analysis with BG ROI GM volumes for each condition. The HIV +/POLY+ group revealed a positive association in GM volume bilaterally in the caudate and right putamen ($p < 0.05$ FWE) with greater motor learning (higher Δ) (Table 4). There were no further significant volume associations between other BG regions regarding motor learning (all p -values > 0.05 FWE).

Groups were compared on total BG GM differences, controlling for demographic variables, total brain GM, and TCv. Results indicated that total BG GM was reduced in all three clinical groups, relative to that of controls, $p < 0.005$ (vs. HIV +/POLY-, $p < 0.005$; vs. HIV-/POLY+ and HIV +/POLY+, $p < 0.001$). However, none of these differences met criteria for significance at $p < 0.05$ FWE. Examination of BG ROIs revealed a left-lateralized

	Group	t-value	Cluster size (voxels)	MNI peak coordinates (x, y, z)	ROI mask location
Motor learning					
Loop drawing (Δ trials 1 -8)	HIV + /POLY +	7.15	15	- 12, 22, 6	Caudate (L)
		9.98	43	14, 21, 10	Caudate (R)
		6.19	23	30, 8, 2	Putamen (R)
Substance use duration					
Opioids (years)	HIV-/POLY +	- 4.52	119	22, - 2, - 2	GPe (R)
		- 4.40	80	2, - 16, - 4	SNc (R)
		- 4.78	68	15, - 2, 3	GPI (R)
		- 3.86	67	15, 6, - 15	NAc (R)
		- 3.89	59	- 15, 2, - 10	GPe (L)
		- 4.60	59	- 6, 6, - 12	NAc (L)
		- 4.43	17	- 12, 4, 6	Caudate (L)
		- 4.06	14	21, 2, - 6	Putamen (R)
		- 3.53	11	- 21, - 3, - 2	GPI (L)
Stimulants (years)	HIV + /POLY +	- 3.72	10	2, - 15, - 15	VTA (R)
		6.34	17	- 27, - 4, 6	GPe (L)
		7.12	5	- 28, - 3, 8	Putamen (L)
Substance use frequency					
Opioid weighted frequency (scaled frequency)	HIV-/POLY +	- 4.15	89	- 24, - 4, 0	GPe (L)
		- 3.98	41	- 21, - 6, 2	GPI (L)
		- 4.96	40	- 3, 6, - 8	NAc (L)
		- 2.99	17	15, 10, - 15	NAc (R)
Risky behavior					
RAB* (total score)	HIV-/POLY +	7.18	6	- 18, 10, - 3	Putamen (L)
	HIV + /POLY-	- 5.64	53	- 3, - 20, - 9	SNc (L)
		- 3.30	8	2, - 18, - 16	VTA (L)

Table 4. Regressions between regional basal ganglia gray matter volume, motor learning, pattern of substance use, and risky behavior. Results met criteria for $p < 0.05$ FWE with a cut-off threshold of ≥ 5 voxels. Negative t-values represent negative associations. L = left; R = right.

Controls (HIV-/POLY-) vs. clinical groups	t-value	Cluster size (voxels)	MNI peak coordinates (x, y, z)	Location
HIV-/POLY +				
	- 3.69	96	- 18, 2, 2	GPe (L)
	- 3.87	92	- 18, - 2, 3	GPI (L)
	- 3.52	10	- 6, 8, 4	Caudate (L)
HIV + /POLY +				
	- 3.34	13	- 21, 4, 4	GPe (L)
HIV + /POLY-				
	- 3.28	10	- 20, 3, 3	GPe (L)

Table 5. Gray matter ROI volume differences between controls versus clinical groups within the basal ganglia. Data represent clusters with significant GM reduction in the basal ganglia in each clinical group relative to that of controls ($p < 0.05$ FWE with a cut-off threshold of ≥ 5 voxels) in each ROI within the basal ganglia. L = left; R = right.

reduction of GM volume in the clinical groups (Table 5). Compared to controls, the HIV-/POLY + group showed GM reductions in the left GPe, left GPI, and left caudate. In the HIV + /POLY + and HIV + /POLY- groups, GM reduction was observed in the left GPe (See Supplement 1 for additional group differences with clusters < 5 voxels and $p < 0.05$ FWE).

Regression analysis of within-group differences examined changes in BG GM ROI volumes as a function of duration and frequency of use for opioids and stimulants in the HIV-/POLY + and HIV + /POLY + groups (see Table 4 and Fig. 3). For the HIV-/POLY + group, GM volume reduction in the caudate, putamen, GP, SNc, NAc, and VTA was found in relation to prolonged opioid use after controlling for duration of stimulant use (Fig. 3A). Similarly, a reduction of GM volume was found in relation to opioid-weighted frequency of use, controlling for stimulant weighted frequency of use, in the left GPe, left GPI, and bilateral NAc (all results at $p < 0.05$ FWE)

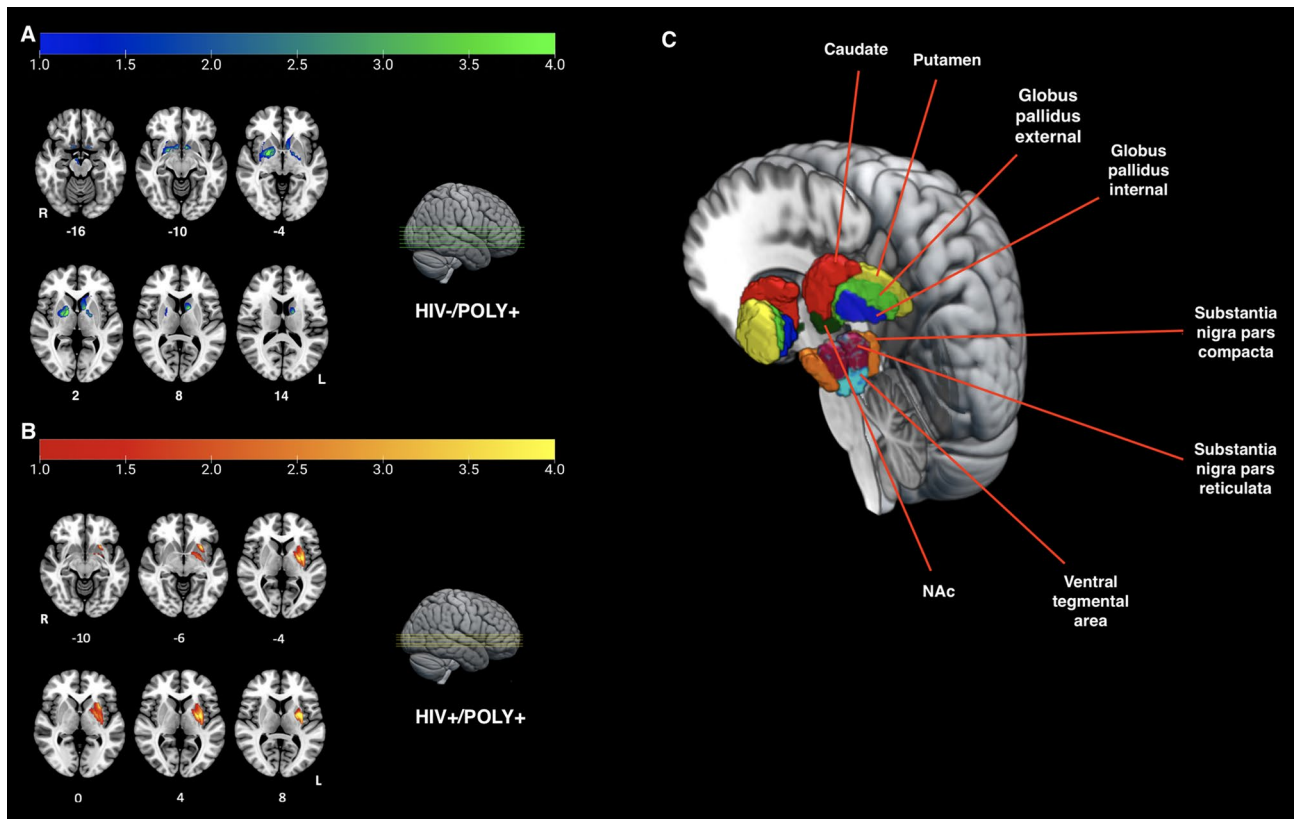


Figure 3. POLY+ group regressions of basal ganglia gray matter volume and substance use duration. (A) Statistical map of z-scores indicating reduced gray matter (GM) as a function of opioid use duration in the HIV-/POLY+ group; z-planes = -16, -10, -4, 2, 8, 14 in MNI space; $p < 0.05$ FWE. R = right hemisphere, L = left hemisphere; (B) Statistical map of z-scores indicating increased GM as a function of stimulant use duration in the HIV+/POLY+ group; z-planes = -10, -6, -4, 0, 4, 8 in MNI space; $p < 0.05$ FWE. R = right hemisphere, L = left hemisphere. (C) Depiction of basal ganglia ROI masks that were used for regression analyses with substance use duration, shown here overlaid on the SPM152 template for visualization.

(Table 4). For the HIV+/POLY+ group, an increase in GM volume was found in relation to prolonged stimulant use, controlling for duration of opioid use, in the left GPe and putamen (Fig. 3B). No further associations between other BG regions as a result of opioid or stimulant use and stimulant-weighted frequency of use were observed.

Total RAB and total BIS scores were entered into regression analyses within each group to examine associations between the BG GM volume and risk-associated behaviors (Table 4). The HIV-/POLY+ group showed a positive association between RAB scores and GM in the left putamen ($p < 0.05$ FWE). The HIV+/POLY- group showed a negative association between RAB scores and GM in the left SNc and left VTA (all results $p < 0.05$ FWE). There were no further associations between RAB scores and BG ROIs within the groups (all $p > 0.05$ FWE). In addition, there were no associations between BIS scores and BG ROIs within the groups (all $p > 0.05$ FWE).

Additional ROI regression analyses within each group explored the following clinical variables to determine if GM changes were present: estimated duration of HIV infection (years), current CD4, nadir, and ART adherence (lifetime). Binary data were excluded from VBM analysis, such as AIDS diagnosis ($CD4 < 200$ cells/ mm^3), HIV viral load < 20 copies/mL, and EFV exposure. There were no associations between these variables and ROI GM volumes observed at $p < 0.05$ FWE with a cluster size of 5 or more voxels. We then lowered the statistical threshold to $p = 0.001$ uncorrected for further exploration. At this threshold, we observed a positive association between current CD4 levels and GM volume in the left caudate for the HIV+/POLY+ group, $p = 0.001$. There were no other associations found at $p = 0.001$ or less.

Discussion

Consistent with prior research, our observations indicated that HIV and polysubstance use impacted BG GM volumes^{47–49}. We observed differential effects of polysubstance use on BG volume as a function of HIV infection. In HIV-/POLY+ participants, duration and frequency of opioid use was associated with BG GM atrophy, but no effect was seen with the corresponding variables for stimulants (Fig. 2). By contrast, in HIV+/POLY+ participants, duration of stimulant use was associated with BG GM enlargement, while no such effect was observed with opioid use. Taken together, these results suggest that the substance an individual preferentially uses on a regular basis may differentially impact BG GM volume contingent upon serostatus.

It is curious that the direction of volumetric BG change was predicated upon the duration of substance use and substance type (opioid versus stimulants) and that this effect was mediated by HIV. Although effects of opioids on the BG have not been reported previously, past research suggests an antagonistic effect between volume decreases and increases related to other substance use in the setting of HIV infection^{22,50}. One explanation for this volumetric increase is neuroinflammation²⁸, which can be beneficial (e.g., tissue regeneration, protection against infection) or detrimental (e.g., cell death, chronic neurodegeneration). Sil et al.⁵¹ hypothesized that HIV-1 proteins and drugs of abuse cooperatively activate inflammasomes, leading to neuroinflammation and contributing to premature aging. Glial cell activation and subsequent cerebral scarring have been noted as a hallmark of neuroinflammation in the context of HIV⁵². Stimulants have been associated with microglial activation and reactive astrogliosis within the dopaminergic system^{51,53}, compounding the neurotoxic effects of HIV on dopamine-related functions^{54,55} and increasing pro-inflammatory cytokines^{56–58}. We speculate that the observed BG volume increases in PLWH resulted from a stimulant-induced inflammatory response that was disproportionate to the smoldering, degenerative milieu typical of HIV infection^{59,60}.

We also observed whole-brain GM volume decrements in the HIV + groups relative to controls, mirroring previous research^{61–63} and suggesting that there were GM changes in regions outside of the BG. Therefore, we included whole-brain GM as a covariate in our between-group comparisons of the ROIs. Relative to controls, each clinical group revealed regional BG GM volume decreases, although these findings did not meet the stringent threshold of $p < 0.05$ FWE. This may have been a statistical power issue. Tentatively, we interpreted these findings indicative of BG GM volume decreases that surpassed GM volume changes at the whole-brain level, speaking to the particular vulnerability of the basal ganglia in these populations.

The associations we observed between the BG GM and risky behaviors reinforced the expected outcomes of BG insult. The HIV-/POLY + group showed an increased BG GM volume (putamen) in association with increased risk-taking behavior. This finding aligns with past observations linking increased striatal response on fMRI to reward cues and anticipation of potential gain^{64,65}. In contrast, the HIV +/POLY- group showed the opposite effect, with volume reductions in the SNc and VTA associated with more risk-taking behavior (See Fig. 3). HIV seropositivity has been linked with higher risk-taking scores on the RAB⁶⁶, and we speculate that neuronal atrophy in these dopaminergic regions^{67,68} may be implicated in this association. We also observed motor deficits in the clinical groups, with the HIV +/POLY + group showing an association between decreased BG GM (*caudate and putamen*) and slower motor learning. This finding is unsurprising given the BG's prominent role in motor learning and control^{69,70}.

Analysis of clinical variables indicated that an increase of GM volume was present in the left caudate in association with increased current CD4 count in the HIV +/POLY + group. There were no other associations found within groups or between groups after exploring other clinical variables. Our findings are similar to those of Castelo et al.⁷¹, who demonstrated higher CD4 counts were associated with larger left putamen volume and Fennema-Notestine et al.⁷², who observed higher CD4 counts were associated with an increase in subcortical GM. Although the relationship is complex, Fennema-Notestine et al. suggested that CD4 counts reflect immune recovery processes following GM changes.

Despite controlling for substance use in our regression analyses, we cannot fully dissociate the independent contributions of stimulants and opioids in our samples or determine the influence, if any, of opioid maintenance therapies on BG GM volume. In this study, all participants in the HIV-/POLY + group and four participants in the HIV +/POLY + group were receiving opioid maintenance therapy at the time of test. While methadone has been shown to increase viral load⁷³ and contribute to neuroinflammation and viral neuropathogenesis⁶⁰, buprenorphine increases the likelihood of viral suppression in PLWH⁷⁴. Increased dopamine concentrations related to opioid use, including methadone, can further increase monocyte influx and viral replication^{75,76}. It is possible that opioid therapy influenced the volumetric changes we observed in both POLY + groups; however, differences were found in opposite directions between them. We also cannot exclude the influence of ART on GM volume, as it may interact with BG immune responses^{77–79}. However, HIV + participants in both groups were adherent to an ART regimen at the time of testing, and we observed a GP volume increase in the HIV +/POLY + group only. Finally, the cross-sectional design of this study presents a limitation to our understanding of the evolving impact of substance use and HIV on the brain.

We observed that the integrity of the basal ganglia was affected by the interaction between HIV and poly-substance use. Combined HIV infection and stimulant use may lead to sustained neuroinflammation and damage to the BG, as evidenced by pathological GM volume increases. These results shed light on structural brain changes associated with HIV infection and polysubstance exposure, which play a critical role in understanding clinical implications for PLWH. Further research is warranted to determine the precise underlying neurological mechanisms of BG changes and why it is particularly vulnerable to these effects.

Data availability

The datasets generated during and/or analyzed during the current study are available from the corresponding author on reasonable request.

Received: 6 October 2021; Accepted: 4 March 2022

Published online: 14 March 2022

References

1. Degenhardt, L. *et al.* Global prevalence of injecting drug use and sociodemographic characteristics and prevalence of HIV, HBV, and HCV in people who inject drugs: a multistage systematic review. *Lancet Glob. Health* 5, e1192–e1207. [https://doi.org/10.1016/S2214-109X\(17\)30375-3](https://doi.org/10.1016/S2214-109X(17)30375-3) (2017).

2. Carrico, A. W. Substance use and HIV disease progression in the HAART era: implications for the primary prevention of HIV. *Life Sci.* **88**, 940–947. <https://doi.org/10.1016/j.lfs.2010.10.002> (2011).
3. Skowronska, M. *et al.* Methamphetamine increases HIV infectivity in neural progenitor cells. *J. Biol. Chem.* **293**, 296–311. <https://doi.org/10.1074/jbc.RA117.000795> (2018).
4. Carrico, A. W. *et al.* Randomized controlled trial of a positive affect intervention to reduce HIV viral load among sexual minority men who use methamphetamine. *J. Int. AIDS Soc.* **22**, e25436. <https://doi.org/10.1002/jia2.25436> (2019).
5. Morin, S. F. *et al.* Predicting HIV transmission risk among HIV-infected patients seen in clinical settings. *AIDS Behav.* **11**, S6–16. <https://doi.org/10.1007/s10461-007-9253-4> (2007).
6. Parsons, J. T. & Bimbi, D. S. Intentional unprotected anal intercourse among sex who have sex with men: barebacking - from behavior to identity. *AIDS Behav.* **11**, 277–287. <https://doi.org/10.1007/s10461-006-9135-1> (2007).
7. Ball, L. J. *et al.* Sharing of injection drug preparation equipment is associated with HIV infection: a cross-sectional study. *J. Acquir. Immune Defic. Syndr.* **81**, e99–e103. <https://doi.org/10.1097/qai.0000000000002062> (2019).
8. McArthur, J. C., Brew, B. J. & Nath, A. Neurological complications of HIV infection. *Lancet Neurol.* **4**, 543–555. [https://doi.org/10.1016/s1474-4422\(05\)70165-4](https://doi.org/10.1016/s1474-4422(05)70165-4) (2005).
9. Aylward, E. H. *et al.* Reduced basal ganglia volume in HIV-1-associated dementia: results from quantitative neuroimaging. *Neurology* **43**, 2099–2104 (1993).
10. Lopez, O. L., Smith, G., Meltzer, C. C. & Becker, J. T. Dopamine systems in human immunodeficiency virus-associated dementia. *Neuropsychiat. Neuropsychol. Behav. Neurol.* **12**, 184–192 (1999).
11. Berger, J. R. & Arendt, G. HIV dementia: the role of the basal ganglia and dopaminergic systems. *J. Psychopharmacol.* **14**, 214–221 (2000).
12. Chang, L. *et al.* Neural correlates of attention and working memory deficits in HIV patients. *Neurology* **57**, 1001–1007 (2001).
13. Kuper, M. *et al.* Structural gray and white matter changes in patients with HIV. *J. Neurol.* **258**, 1066–1075. <https://doi.org/10.1007/s00415-010-5883-y> (2011).
14. Ances, B. M., Ortega, M., Vaida, F., Heaps, J. & Paul, R. Independent effects of HIV, aging, and HAART on brain volumetric measures. *J. Acquir. Immune Defic. Syndr.* **59**, 469–477. <https://doi.org/10.1097/QAI.0b013e318249db17> (2012).
15. Fennema-Notestine, C. *et al.* Increases in brain white matter abnormalities and subcortical gray matter are linked to CD4 recovery in HIV infection. *J. Neurovirol.* **19**, 393–401. <https://doi.org/10.1007/s13365-013-0185-7> (2013).
16. Ortega, M., Brier, M. R. & Ances, B. M. Effects of HIV and combination antiretroviral therapy on cortico-striatal functional connectivity. *AIDS* **29**, 703–712. <https://doi.org/10.1097/QAD.0000000000000611> (2015).
17. Chang, L. *et al.* Enlarged striatum in abstinent methamphetamine abusers: a possible compensatory response. *Biol. Psychiatry* **57**, 967–974. <https://doi.org/10.1016/j.biopsych.2005.01.039> (2005).
18. Berman, S., O'Neill, J., Fears, S., Bartzokis, G. & London, E. D. Abuse of amphetamines and structural abnormalities in the brain. *Ann. N. Y. Acad. Sci.* **1141**, 195–220. <https://doi.org/10.1196/annals.1441.031> (2008).
19. Mackey, S. & Paulus, M. Are there volumetric brain differences associated with the use of cocaine and amphetamine-type stimulants? *Neurosci. Biobehav. Rev.* **37**, 300–316. <https://doi.org/10.1016/j.neubiorev.2012.12.003> (2013).
20. Ersche, K. D. *et al.* Abnormal structure of frontostriatal brain systems is associated with aspects of impulsivity and compulsivity in cocaine dependence. *Brain* **134**, 2013–2024. <https://doi.org/10.1093/brain/awr138> (2011).
21. Jacobsen, L. K., Giedd, J. N., Gottschalk, C., Kosten, T. R. & Krystal, J. H. Quantitative morphology of the caudate and putamen in patients with cocaine dependence. *Am. J. Psychiatry* **158**, 486–489. <https://doi.org/10.1176/appi.ajp.158.3.486> (2001).
22. Jernigan, T. L. *et al.* Effects of methamphetamine dependence and HIV infection on cerebral morphology. *Am. J. Psychiatry* **162**, 1461–1472. <https://doi.org/10.1176/appi.ajp.162.8.1461> (2005).
23. Barros-Loscertales, A. *et al.* Reduced striatal volume in cocaine-dependent patients. *Neuroimage* **56**, 1021–1026. <https://doi.org/10.1016/j.neuroimage.2011.02.035> (2011).
24. Gardini, S. & Venneri, A. Reduced grey matter in the posterior insula as a structural vulnerability or diathesis to addiction. *Brain Res. Bull.* **87**, 205–211. <https://doi.org/10.1016/j.brainresbull.2011.11.021> (2012).
25. Tolomeo, S., Matthews, K., Steele, D. & Baldacchino, A. Compulsivity in opioid dependence. *Prog. Neuropsychopharmacol. Biol. Psychiatry* **81**, 333–339. <https://doi.org/10.1016/j.pnpbp.2017.09.007> (2018).
26. Tolomeo, S., Gray, S., Matthews, K., Steele, J. D. & Baldacchino, A. Multifaceted impairments in impulsivity and brain structural abnormalities in opioid dependence and abstinence. *Psychol. Med.* **46**, 2841–2853. <https://doi.org/10.1017/S0033291716001513> (2016).
27. Bach, P. *et al.* Impaired working memory performance in opioid-dependent patients is related to reduced insula gray matter volume: a voxel-based morphometric study. *Eur. Arch. Psychiatry Clin. Neurosci.* <https://doi.org/10.1007/s00406-019-01052-7> (2019).
28. Boerwinkle, A. H., Meecker, K. L., Luckett, P. & Ances, B. M. Neuroimaging the Neuropathogenesis of HIV. *Curr. HIV/AIDS Rep.* **18**, 221–228. <https://doi.org/10.1007/s11904-021-00548-z> (2021).
29. First, M. B., Spitzer, R. L., Gibbon, M. & Williams, J. B. Structured clinical interview for the DSM-IV axis I disorders. (1996).
30. Czermak, C. *et al.* Test-retest reliability of a lifetime drug use questionnaire. *Addict. Behav.* **30**, 361–368. <https://doi.org/10.1016/j.addbeh.2004.05.005> (2005).
31. Marvel, C. L., Faulkner, M. L., Strain, E. C., Mintzer, M. Z. & Desmond, J. E. An fMRI investigation of cerebellar function during verbal working memory in methadone maintenance patients. *Cerebellum* **11**, 300–310. <https://doi.org/10.1007/s12311-011-0311-0> (2012).
32. Anderson, B. A., Faulkner, M. L., Rilee, J. J., Yantis, S. & Marvel, C. L. Attentional bias for nondrug reward is magnified in addiction. *Exp. Clin. Psychopharmacol.* **21**, 499–506. <https://doi.org/10.1037/a0034575> (2013).
33. Anderson, B. A., Kronemer, S. I., Rilee, J. J., Sacktor, N. & Marvel, C. L. Reward, attention, and HIV-related risk in HIV+ individuals. *Neurobiol. Dis.* **92**, 157–165. <https://doi.org/10.1016/j.nbd.2015.10.018> (2016).
34. The Centers for Disease Control and Prevention. *Terms, definitions, and calculations used in CDC HIV surveillance publications*. <<https://www.cdc.gov/hiv/statistics/surveillance/terms.html>> (2019).
35. Weld, E. D. Limits of detection and limits of infection: quantitative HIV measurement in the Era of U = U. *J. Appl. Lab. Med.* **6**, 324–326. <https://doi.org/10.1093/jalm/jfaa176> (2020).
36. Farmer, A. *et al.* Factors associated with HIV viral load “blips” and the relationship between self-reported adherence and efavirenz blood levels on blip occurrence: a case–control study. *AIDS Res. Ther.* **13**, 16. <https://doi.org/10.1186/s12981-016-0100-4> (2016).
37. Eisinger, R. W., Dieffenbach, C. W. & Fauci, A. S. HIV viral load and transmissibility of HIV infection: undetectable equals untransmittable. *JAMA* **321**, 451–452. <https://doi.org/10.1001/jama.2018.21167> (2019).
38. Ashburner, J. & Friston, K. J. Voxel-based morphometry—the methods. *Neuroimage* **11**, 805–821. <https://doi.org/10.1006/nimg.2000.0582> (2000).
39. Ashburner, J. *et al.* *SPM12 Manual the FIL Methods Group (and honorary members)*. <https://www.fil.ion.ucl.ac.uk/spm/doc/manual.pdf> (2016).
40. The MathWorks Inc., Natick, Massachusetts, 2020.
41. Prodoehl, J., Yu, H., Little, D. M., Abraham, I. & Vaillancourt, D. E. Region of interest template for the human basal ganglia: comparing EPI and standardized space approaches. *Neuroimage* **39**, 956–965. <https://doi.org/10.1016/j.neuroimage.2007.09.027> (2008).

42. Pauli, W. M., Nili, A. N. & Tyszka, J. M. A High-Resolution Probabilistic *In Vivo* Atlas of Human Subcortical Brain Nuclei. *bioRxiv*, 211201, doi:<https://doi.org/10.1101/211201> (2017).
43. Metzger, D. in *Sixth annual meeting of the national cooperative vaccine development groups for AIDS*. S281–S283.
44. Patton, J. H., Stanford, M. S. & Barratt, E. S. Factor structure of the Barratt impulsiveness scale. *J. Clin. Psychol.* **51**, 768–774 (1995).
45. Kronemer, S. I., Mandel, J. A., Sacktor, N. C. & Marvel, C. L. Impairments of motor function while multitasking in HIV. *Front. Hum. Neurosci.* **11**, doi:<https://doi.org/10.3389/fnhum.2017.00212> (2017).
46. Morgan, O. P. *et al.* The cerebellum and implicit sequencing: evidence from cerebellar ataxia. *Cerebellum* <https://doi.org/10.1007/s12311-020-01206-7> (2020).
47. Itoh, K., Mehraein, P. Neuronal damage of the substantia nigra in HIV-1 infected brains. *Acta Neuropathol. Berlin* **99**, 376–384.
48. Chang, L., Ernst, T., Leonido-Yee, M., Walot, I. & Singer, E. Cerebral metabolite abnormalities correlate with clinical severity of HIV-1 cognitive motor complex. *Neurology* **52**, 100–108. <https://doi.org/10.1212/wnl.52.1.100> (1999).
49. Vera, J. H. *et al.* Alterations in cerebrospinal fluid chemokines are associated with maraviroc exposure and in vivo metabolites measurable by magnetic resonance spectroscopy. *HIV Clin. Trials* **13**, 222–227. <https://doi.org/10.1310/hct1304-222> (2012).
50. MacDuffie, K. E. *et al.* Effects of HIV Infection, methamphetamine dependence and age on cortical thickness, area and volume. *Neuroimage Clin.* **20**, 1044–1052. <https://doi.org/10.1016/j.nicl.2018.09.034> (2018).
51. Sil, S. *et al.* Role of Inflammasomes in HIV-1 and Drug Abuse Mediated Neuroinflammation. *Cells* <https://doi.org/10.3390/cells9081857> (2020).
52. Sofroniew, M. V. Molecular dissection of reactive astrogliosis and glial scar formation. *Trends Neurosci.* **32**, 638–647. <https://doi.org/10.1016/j.tins.2009.08.002> (2009).
53. LaVoie, M. J., Card, J. P. & Hastings, T. G. Microglial activation precedes dopamine terminal pathology in methamphetamine-induced neurotoxicity. *Exp. Neurol.* **187**, 47–57. <https://doi.org/10.1016/j.expneurol.2004.01.010> (2004).
54. Nath, A., Maragos, W. F., Avison, M. J., Schmitt, F. A. & Berger, J. R. Acceleration of HIV dementia with methamphetamine and cocaine. *J. Neurovirol.* **7**, 66–71. <https://doi.org/10.1080/135502801300069737> (2001).
55. Samikkannu, T. *et al.* HIV subtypes B and C gp120 and methamphetamine interaction: dopaminergic system implicates differential neuronal toxicity. *Sci. Rep.* **5**, 11130. <https://doi.org/10.1038/srep11130> (2015).
56. Flora, G. *et al.* Methamphetamine potentiates HIV-1 Tat protein-mediated activation of redox-sensitive pathways in discrete regions of the brain. *Exp. Neurol.* **179**, 60–70 (2003).
57. Fiala, M. *et al.* Cocaine enhances monocyte migration across the blood-brain barrier. Cocaine's connection to AIDS dementia and vasculitis?. *Adv. Exp. Med. Biol.* **437**, 199–205. https://doi.org/10.1007/978-1-4615-5347-2_22 (1998).
58. Clark, K. H., Wiley, C. A. & Bradberry, C. W. Psychostimulant abuse and neuroinflammation: Emerging evidence of their interconnection. *Neurotox Res.* **23**, 174–188. <https://doi.org/10.1007/s12640-012-9334-7> (2013).
59. Deeks, S. G., Tracy, R. & Douek, D. C. Systemic effects of inflammation on health during chronic HIV infection. *Immunity* **39**, 633–645. <https://doi.org/10.1016/j.immuni.2013.10.001> (2014).
60. Murphy, A. *et al.* The effects of opioids on HIV neuropathogenesis. *Front. Immunol.* **10**, 2445–2445. <https://doi.org/10.3389/fimmu.2019.02445> (2019).
61. Liu, D. *et al.* Altered gray matter volume and functional connectivity in human immunodeficiency virus-infected adults. *Front. Neurosci.* <https://doi.org/10.3389/fnins.2020.601063> (2020).
62. Underwood, J. *et al.* Gray and white matter abnormalities in treated human immunodeficiency virus disease and their relationship to cognitive function. *Clin. Infect. Dis.* **65**, 422–432. <https://doi.org/10.1093/cid/cix301> (2017).
63. Sanford, R., Fellows, L. K., Ances, B. M. & Collins, D. L. Association of brain structure changes and cognitive function with combination antiretroviral therapy in HIV-positive individuals. *JAMA Neurol.* **75**, 72–79. <https://doi.org/10.1001/jamaneurol.2017.3036> (2018).
64. Nestor, L., Hester, R. & Garavan, H. Increased ventral striatal BOLD activity during non-drug reward anticipation in cannabis users. *Neuroimage* **49**, 1133–1143. <https://doi.org/10.1016/j.neuroimage.2009.07.022> (2010).
65. Bjork, J. M. *et al.* Incentive-elicited brain activation in adolescents: similarities and differences from young adults. *J. Neurosci.* **24**, 1793–1802. <https://doi.org/10.1523/jneurosci.4862-03.2004> (2004).
66. Baker, L. *et al.* Impact of human immunodeficiency virus on neurocognition and risky behaviors in young adults. *J. Neurovirol.* **20**, 466–473. <https://doi.org/10.1007/s13365-014-0264-4> (2014).
67. Willuhn, I., Wanat, M. J., Clark, J. J. & Phillips, P. E. Dopamine signaling in the nucleus accumbens of animals self-administering drugs of abuse. *Curr. Top. Behav. Neurosci.* **3**, 29–71. https://doi.org/10.1007/7854_2009_27 (2010).
68. Sonne, J., Reddy, V. & Beato, M. R. in *StatPearls* (StatPearls Publishing Copyright © 2022, StatPearls Publishing LLC., 2022).
69. Florio, T. M. *et al.* The Basal Ganglia: More than just a switching device. *CNS Neurosci. Ther.* **24**, 677–684. <https://doi.org/10.1111/cns.12987> (2018).
70. Doyon, J. *et al.* Contributions of the basal ganglia and functionally related brain structures to motor learning. *Behav. Brain Res.* **199**, 61–75. <https://doi.org/10.1016/j.bbr.2008.11.012> (2009).
71. Castelo, J. M., Courtney, M. G., Melrose, R. J. & Stern, C. E. Putamen hypertrophy in nondemented patients with human immunodeficiency virus infection and cognitive compromise. *Arch. Neurol.* **64**, 1275–1280. <https://doi.org/10.1001/archneur.64.9.1275> (2007).
72. Fennema-Notestine, C. *et al.* Increases in brain white matter abnormalities and subcortical gray matter are linked to CD4 recovery in HIV infection. *J. Neurovirol.* **19**, 393–401. <https://doi.org/10.1007/s13365-013-0185-7> (2013).
73. Li, Y. *et al.* Methadone enhances human immunodeficiency virus infection of human immune cells. *J. Infect. Dis.* **185**, 118–122. <https://doi.org/10.1086/338011> (2002).
74. Kim, J. *et al.* The effect of buprenorphine on HIV viral suppression. *Clin. Infect. Dis.* <https://doi.org/10.1093/cid/ciab578> (2021).
75. Coley, J. S., Calderon, T. M., Gaskill, P. J., Eugenin, E. A. & Berman, J. W. Dopamine increases CD14+CD16+ monocyte migration and adhesion in the context of substance abuse and HIV neuropathogenesis. *PLoS ONE* **10**, e0117450. <https://doi.org/10.1371/journal.pone.0117450> (2015).
76. Gaskill, P. J. *et al.* Human immunodeficiency virus (HIV) infection of human macrophages is increased by dopamine: a bridge between HIV-associated neurologic disorders and drug abuse. *Am. J. Pathol.* **175**, 1148–1159. <https://doi.org/10.2353/ajpath.2009.081067> (2009).
77. Anthony, I. C., Ramage, S. N., Carnie, F. W., Simmonds, P. & Bell, J. E. Influence of HAART on HIV-related CNS disease and neuroinflammation. *J. Neuropathol. Exp. Neurol.* **64**, 529–536. <https://doi.org/10.1093/jnen/64.6.529> (2005).
78. Gruenewald, A. L. *et al.* Neuroinflammation associates with antioxidant heme oxygenase-1 response throughout the brain in persons living with HIV. *J. Neurovirol.* <https://doi.org/10.1007/s13365-020-00902-8> (2020).
79. Ferrara, M. *et al.* Antiretroviral drug concentrations in brain tissue of adult decedents. *AIDS* **34**, 1907–1914. <https://doi.org/10.1097/qad.0000000000002628> (2020).

Acknowledgements

This study was supported by K01DA030442, R01DA041264, and the Margaret Q. Landenberger Research Foundation. The MRI equipment in this study was funded by NIH grant 1S10ODO21648. The project described was also supported by Grant Number UL1 RR 025005 from the National Center for Research Resources (NCRR), a

component of the National Institutes of Health (NIH) and NIH Roadmap for Medical Research, and its contents are solely the responsibility of the authors and do not necessarily represent the official view of NCRR or NIH. We thank Monica Faulkner, Prianca Nadkarni, Jessica Rilee, and Bronte Wen for assistance with data collection, scoring, and MRI processing. We also thank Kenneth Stoller and Daniel Buccino for study referrals.

Author contributions

A.M., C.M., and E.S. contributed to the study's conceptualization and design. Material preparation, data collection, and analyses were performed by A.M., M.J., N.C., O.M., J.C., and C.M. The first draft of the manuscript was written by A.M., M.J., N.C., and C.M., and all authors commented on previous versions of the manuscript. All authors read and approved the final manuscript.

Competing interests

The authors declare no competing interests.

Additional information

Supplementary Information The online version contains supplementary material available at <https://doi.org/10.1038/s41598-022-08364-0>.

Correspondence and requests for materials should be addressed to C.L.M.

Reprints and permissions information is available at www.nature.com/reprints.

Publisher's note Springer Nature remains neutral with regard to jurisdictional claims in published maps and institutional affiliations.



Open Access This article is licensed under a Creative Commons Attribution 4.0 International License, which permits use, sharing, adaptation, distribution and reproduction in any medium or format, as long as you give appropriate credit to the original author(s) and the source, provide a link to the Creative Commons licence, and indicate if changes were made. The images or other third party material in this article are included in the article's Creative Commons licence, unless indicated otherwise in a credit line to the material. If material is not included in the article's Creative Commons licence and your intended use is not permitted by statutory regulation or exceeds the permitted use, you will need to obtain permission directly from the copyright holder. To view a copy of this licence, visit <http://creativecommons.org/licenses/by/4.0/>.

© The Author(s) 2022