

9-1-2023


## Uveal Melanoma Causing Iridodialysis: Tip of the Iceberg

Deepthi E. Kurian

Konica Singla

Carol L. Shields

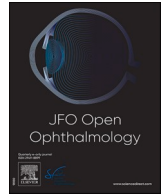
Follow this and additional works at: <https://jdc.jefferson.edu/willsfp>

 Part of the [Neoplasms Commons](#), [Ophthalmology Commons](#), and the [Pathological Conditions, Signs and Symptoms Commons](#)

[Let us know how access to this document benefits you](#)

---

This Article is brought to you for free and open access by the Jefferson Digital Commons. The Jefferson Digital Commons is a service of Thomas Jefferson University's [Center for Teaching and Learning \(CTL\)](#). The Commons is a showcase for Jefferson books and journals, peer-reviewed scholarly publications, unique historical collections from the University archives, and teaching tools. The Jefferson Digital Commons allows researchers and interested readers anywhere in the world to learn about and keep up to date with Jefferson scholarship. This article has been accepted for inclusion in Wills Eye Hospital Papers by an authorized administrator of the Jefferson Digital Commons. For more information, please contact: [JeffersonDigitalCommons@jefferson.edu](mailto:JeffersonDigitalCommons@jefferson.edu).



## Images

## Uveal melanoma causing iridodialysis: tip of the iceberg

Deepthi E. Kurian, Konica Singla, Carol L. Shields\*

*Ocular Oncology Service, Wills Eye Hospital, Thomas Jefferson University, 840 Walnut Street, 14th Floor, Philadelphia, PA 19107, United States*

## Legend

A 64-year-old Caucasian male was referred with tumor in the right eye (OD). Visual acuity was 20/60 OD and 20/30 left eye (OS). Examination OD showed D-shaped pupil with vascular, pigmented ciliary body (CB) mass inferotemporally invading iris, with sentinel vessels (Fig. 1A, arrow). Gonioscopy (Fig. 1B) and ultrasound biomicroscopy confirmed an iridociliary mass leading to iris root disinsertion (Fig. 1C, arrow). Fundus examination (Fig. 1D) revealed posterior choroidal extension with a total tumor diameter of 16 mm and thickness of 11 mm clinically suggestive of large iridociliochoroidal melanoma. He was treated with custom designed Iodine-125 plaque brachytherapy. Iridodialysis is a rare manifestation of uveal melanoma with angle invasion.

## Description

This is a case of a middle-aged man with a large iridociliochoroidal melanoma causing iridodialysis in the right eye.

Support provided in part by the Eye Tumor Research Foundation, Philadelphia, PA (CLS). The funders had no role in the design and conduct of the study, in the collection, analysis and interpretation of the data, and in the preparation, review or approval of the manuscript. Carol L. Shields, M.D. has had full access to all the data in the study and takes responsibility for the integrity of the data.

## Conflict of interest

None of the authors in this article have any interests to disclose.

\* Corresponding author.

E-mail address: [carolshields@gmail.com](mailto:carolshields@gmail.com) (C.L. Shields).

<https://doi.org/10.1016/j.jfop.2023.100048>

Received 24 May 2023; Accepted 31 July 2023

Available online 9 August 2023

2949-8899/© 2023 The Author(s). Published by Elsevier Masson SAS. This is an open access article under the CC BY license (<http://creativecommons.org/licenses/by/4.0/>).

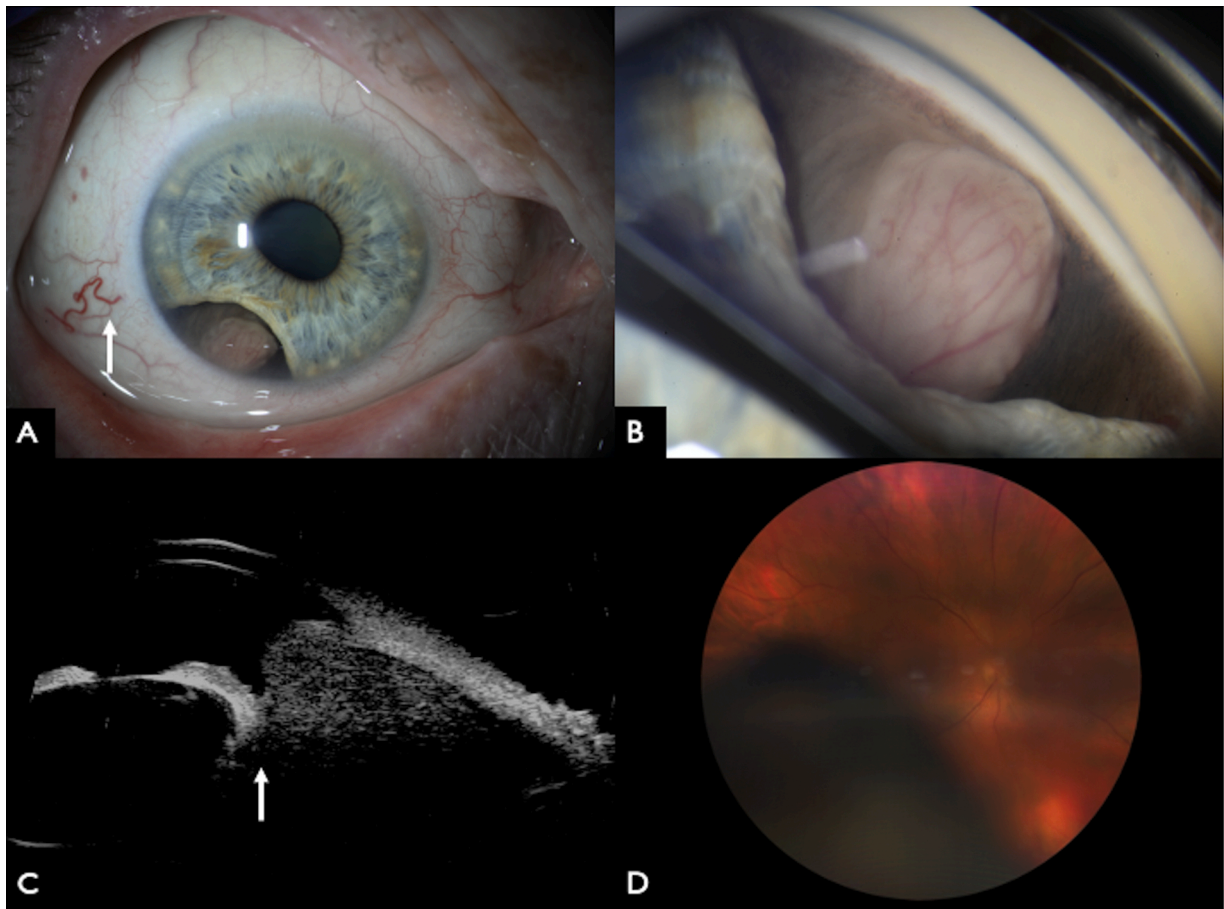


Fig. 1.