

6-4-2019

## Peripheral synucleinopathy in a DJ1 patient with Parkinson disease, cataracts, and hearing loss

Derek P. Narendra

*National Institute of Neurological Disorders and Stroke; University of Pennsylvania*

Risa Isonaka

*National Institute of Neurological Disorders and Stroke*

Diana Nguyen

*National Institute of Neurological Disorders and Stroke*

Alice B. Schindler

*National Institute of Neurological Disorders and Stroke*

Angela D. Kokkinis

Follow this and additional works at: <https://jdc.jefferson.edu/neurologyfp>

*National Institute of Neurological Disorders and Stroke*

 Part of the [Neurology Commons](#)

**[Let us know how access to this document benefits you](#)**

*See next page for additional authors*

---

### Recommended Citation

Narendra, Derek P.; Isonaka, Risa; Nguyen, Diana; Schindler, Alice B.; Kokkinis, Angela D.; Ehrlich, Debra; Bardakjian, Tanya M.; Goldstein, David S.; Liang, Tsao-Wei; and Gonzalez-Alegre, Pedro, "Peripheral synucleinopathy in a DJ1 patient with Parkinson disease, cataracts, and hearing loss" (2019). *Department of Neurology Faculty Papers*. Paper 189.

<https://jdc.jefferson.edu/neurologyfp/189>

This Article is brought to you for free and open access by the Jefferson Digital Commons. The Jefferson Digital Commons is a service of Thomas Jefferson University's [Center for Teaching and Learning \(CTL\)](#). The Commons is a showcase for Jefferson books and journals, peer-reviewed scholarly publications, unique historical collections from the University archives, and teaching tools. The Jefferson Digital Commons allows researchers and interested readers anywhere in the world to learn about and keep up to date with Jefferson scholarship. This article has been accepted for inclusion in Department of Neurology Faculty Papers by an authorized administrator of the Jefferson Digital Commons. For more information, please contact: [JeffersonDigitalCommons@jefferson.edu](mailto:JeffersonDigitalCommons@jefferson.edu).

---

**Authors**

Derek P. Narendra, Risa Isonaka, Diana Nguyen, Alice B. Schindler, Angela D. Kokkinis, Debra Ehrlich, Tanya M. Bardakjian, David S. Goldstein, Tsao-Wei Liang, and Pedro Gonzalez-Alegre

# Peripheral synucleinopathy in a *DJ1* patient with Parkinson disease, cataracts, and hearing loss

Derek P. Narendra, MD, PhD, Risa Isonaka, PhD, Diana Nguyen, BS, Alice B. Schindler, MS, CGC, Angela D. Kokkinis, BSN, RN, Debra Ehrlich, MD, MS, Tanya M. Bardakjian, MS, CGC, David S. Goldstein, MD, PhD, Tsao-Wei Liang, MD, and Pedro Gonzalez-Alegre, MD, PhD

## Correspondence

Dr. Narendra  
derek.narendra@nih.gov

*Neurology*® 2019;92:1113-1115. doi:10.1212/WNL.00000000000007614

Whereas Parkinson disease (PD) is usually sporadic, PD with onset under 50 years old can be associated with genetic abnormalities, including rare biallelic mutations in the *DJ1* gene (*PARK7*).<sup>1</sup> The *DJ1* phenotype is incompletely described and has been presumed to be similar to the Parkin (*PARK2*) phenotype, in which atypical clinical features are usually absent, and, in contrast to idiopathic PD, synucleinopathy is lacking and olfaction preserved.<sup>2</sup> Whether *DJ1* patients have peripheral synucleinopathy and olfactory dysfunction has been unknown.

## MORE ONLINE

### Video

## Methods

For immunofluorescence microscopy, 3-mm punch biopsies from the C2 area of the posterior neck were fixed in Zamboni fixative, cryosectioned into 10- $\mu$ m slices, and immunostained for tyrosine hydroxylase (Pel-Freez Biologicals, Rogers, AR) (red),  $\alpha$ -synuclein (Santa Cruz Biotechnology, Santa Cruz, CA) (green), and smooth muscle actin (*ACTA2*; Santa Cruz Biotechnology) (blue). Fibroblast cell lines were also established. A colocalization index for  $\alpha$ -synuclein and tyrosine hydroxylase was calculated from confocal images using Fiji (NIH, Bethesda, MD). Normalized mean deviation product (nMDP) values for colocalization were tabulated from  $-0.1$  to  $+1.0$ , and the colocalization index calculated as  $\log(0.1 + \sum \text{nMDP} [0.3-1.0])$ .

## Standard protocol approvals, registrations, and patient consents

All participants provided written informed consent before participation in the research study, which was approved by the National Institute of Neurological Disorders and Stroke institutional review board.

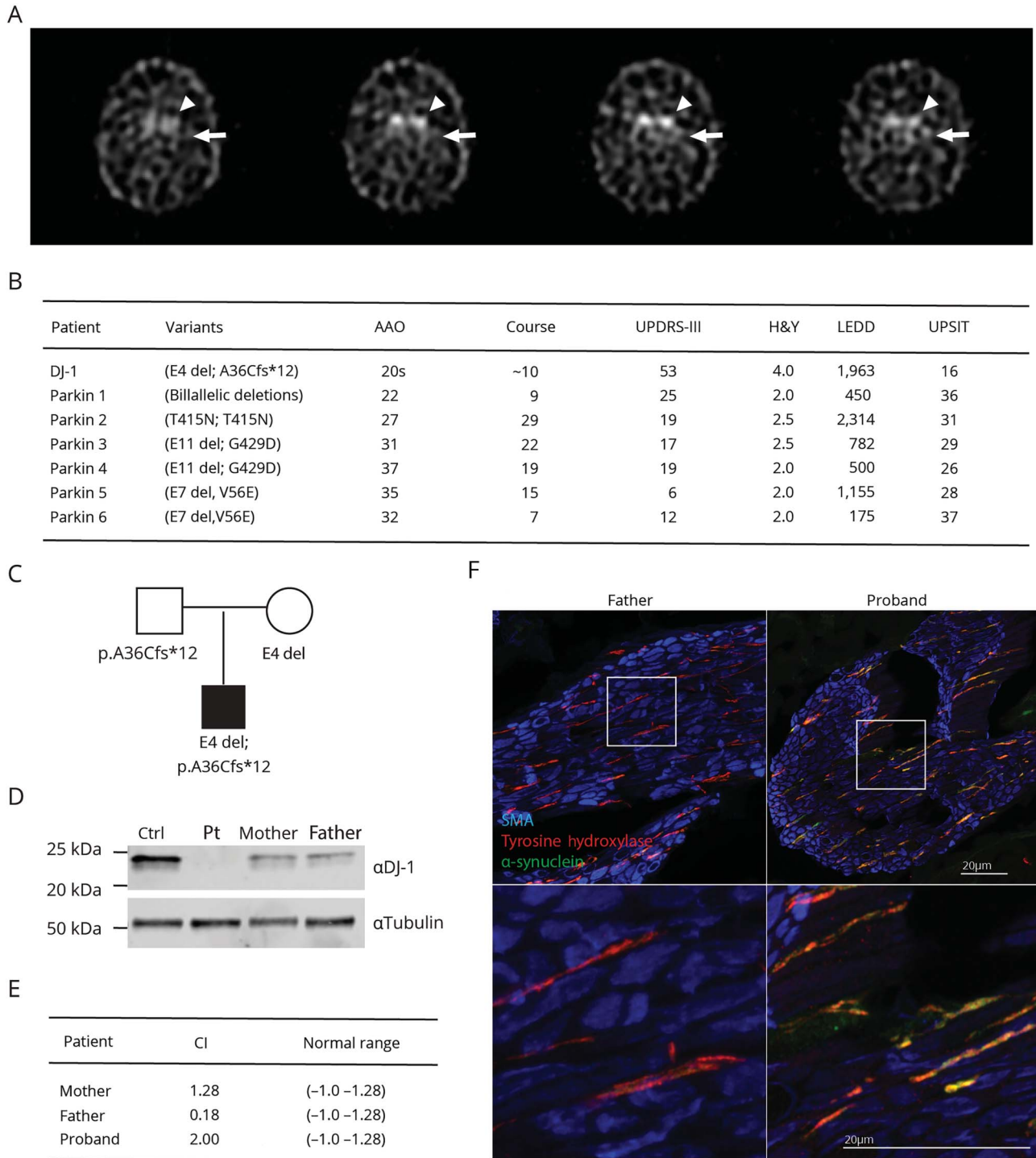
## Results

We report a 35-year-old man with PD and compound heterozygous *DJ1* mutations. In his mid-20s, he developed a left-hand resting tremor that progressed over years, followed by loss of mobility, disability, and speech difficulties. His symptoms responded to levodopa, prompting a diagnosis of PD, supported by DaT imaging (figure, A). At the time of evaluation, the patient had resting tremor, bradykinesia, rigidity, postural instability, motor fluctuations, and dyskinesia. The patient's examination was notable also for eyelid opening apraxia, hyperreflexia, extensor plantar reflex responses bilaterally, and pseudobulbar affect (video 1). The patient was anosmic by the University of Pennsylvania Smell Identification Test (UPSIT; score 16/40). Six patients with early-onset PD from our clinic cohort with biallelic Parkin mutations had higher UPSIT scores (mean 32.8; range 26–38; figure, B). In addition to his neurologic presentation, he had sensorineural hearing loss on audiometry and visual difficulties that improved after bilateral cataract surgery at the age of 33.

Testing for a panel of PD-related genes (Next-Generation Sequencing, Invitae, CA) revealed 2 previously unreported *DJ1* variants (deletion [exon 4]; c.105dupT [p.Ala36Cysfs\*12] [NM\_007262.4]). Parental testing showed these were on opposite chromosomes (figure, C). No *DJ1*

From the National Institute of Neurological Disorders and Stroke (D.P.N., R.I., D.N., A.S., A.K., D.E., D.S.G.), NIH, Bethesda, MD; Department of Neurology (D.P.N., T.M.B., P.G.-A.), University of Pennsylvania; Department of Neurology (T.-W.L.), Thomas Jefferson University Hospital; and The Children's Hospital of Philadelphia (P.G.-A.), PA.

Go to [Neurology.org/N](http://Neurology.org/N) for full disclosures. Funding information and disclosures deemed relevant by the authors, if any, are provided at the end of the article.



(A) Consecutive axial FP-CIT SPECT images demonstrate absent signal in the region of the putamen (arrows) and decreased signal in caudate heads, bilaterally (arrowheads). (B) Clinical characteristics of the *DJ1* patient and 6 biallelic *Parkin* patients for whom University of Pennsylvania Smell Identification Test (UPSIT) data were available. (C) Pedigree of *DJ1* family. Filled in symbol indicates affected individual. (D) fibroblast lysates from a control adult dermal fibroblast line (ATCC), the affected patient, and his unaffected parents were separated on sodium dodecyl sulfate–polyacrylamide gel electrophoresis (SDS-PAGE) gels and immunoblotted for *DJ1* (MBL International, Woburn, MA). (E, F) Representative confocal images (F) and quantification (E) of  $\alpha$ -synuclein (green) within sympathetic noradrenergic nerve fibers (red) innervating dermal piloerector muscles (blue). Normal range is based on measurements from 4 healthy controls and 7 patients with multiple system atrophy.<sup>3</sup> Scale bar = 20  $\mu$ m. AAO = age at onset; H&Y = Hoehn & Yahr; LEDD = levodopa equivalent daily dose; UPDRS = Unified Parkinson's Disease Rating Scale.

protein was detectable in lysates from the patient's fibroblasts. Lysates from each parent had half of the normal DJ1 protein, establishing pathogenicity of the variants (figure, D).

Immunofluorescence microscopy of skin biopsies from the patient demonstrated substantial deposition of  $\alpha$ -synuclein within tyrosine hydroxylase-positive fibers. The calculated

colocalization index, 2.0, was above the control range in our series (−1.0 to 1.3, n = 11; figure, E and F); and within the range of idiopathic PD (0.9–4.9, n = 9).<sup>3</sup>

## Discussion

We identified novel compound heterozygous *DJ1* mutations in a patient with early-onset PD. A prior report of a *DJ1* case noted postmortem Lewy body pathology in the brain.<sup>4</sup> Here we report deposition of  $\alpha$ -synuclein in sympathetic noradrenergic nerves in biopsied skin from a living patient. Together these reports support the view that *DJ1/PARK7* involves synucleinopathy within both the brain and the sympathetic nervous system. We also provide evidence that olfaction can be severely compromised in *DJ1/PARK7*. Data on peripheral synucleinopathy and olfaction, key phenotypic features that distinguish most patients with Parkin from patients with idiopathic PD,<sup>2</sup> were previously missing for *DJ1/PARK7* on review of the 32 reported cases (appendix e-1: doi.org/10.5061/dryad.nv892mp). These findings suggest that the *DJ1* phenotype resembles that of idiopathic PD more closely than that of *Parkin/PARK2* PD.

This case and review of the literature also underscore atypical features of the *DJ1/PARK7* clinical phenotype. Early cataracts were present in 3 cases (9.1%), 2 of whom also had sensorineural hearing loss (6.1%).<sup>5,6</sup> The triad of early-onset PD, cataracts, and sensorineural hearing loss may be specific for *DJ1/PARK7*, as we are unaware of their co-occurrence in other PD cases. Recent studies suggest that DJ1 is a deglycase, repairing cellular damage from reactive aldehydes and protecting against oxidative damage. Reactive aldehydes and oxidative damage are implicated in cataractogenesis, pointing to a possible mechanism for premature cataract development in *DJ1/PARK7*.<sup>7</sup>

We expand the *DJ1* phenotype to include autonomic synucleinopathy and impaired olfaction, distinguishing it from the *Parkin/PARK2* phenotype. In addition, we suggest that the clinical triad of early-onset PD, cataracts, and sensorineural hearing loss may be specific for *DJ1/PARK7*.

## Author contributions

D.P. Narendra: drafting/revising the manuscript, data acquisition, study concept or design, analysis or interpretation of data, accepts responsibility for conduct of research and final approval, acquisition of data, study supervision, obtaining funding. R. Isonaka: drafting/revising the manuscript, data acquisition, analysis or interpretation of data, accepts responsibility for conduct of research and final approval, acquisition

of data, statistical analysis. D. Nguyen: data acquisition, study concept or design, analysis or interpretation of data, accepts responsibility for conduct of research and final approval, acquisition of data. A. Schindler: data acquisition, study concept or design, accepts responsibility for conduct of research and final approval, acquisition of data, study supervision. A. Kokkinis: data acquisition, accepts responsibility for conduct of research and final approval. D. Ehrlich: drafting/revising the manuscript, accepts responsibility for conduct of research and final approval, acquisition of data. T.M. Bardakjian: drafting/revising the manuscript, data acquisition, accepts responsibility for conduct of research and final approval. D.S. Goldstein: drafting/revising the manuscript, analysis or interpretation of data, accepts responsibility for conduct of research and final approval. T.-W. Liang: drafting/revising the manuscript, data acquisition, accepts responsibility for conduct of research and final approval patient referral. P. Gonzalez-Alegre: drafting/revising the manuscript, data acquisition, study concept or design, analysis or interpretation of data, accepts responsibility for conduct of research and final approval, acquisition of data, study supervision.

## Acknowledgment

The authors thank Carolyn Smith, PhD, and NINDS Light Microscopy Facility for technical assistance with confocal microscopy.

## Study funding

This work was funded by the Intramural Research Program of the National Institute of Neurological Disorders and Stroke.

## Disclosure

The authors report no disclosures relevant to the manuscript. Go to Neurology.org/N for full disclosures.

## References

1. Bonifati V, Rizzo P, van Baren MJ, et al. Mutations in the *DJ-1* gene associated with autosomal recessive early-onset parkinsonism. *Science* 2003;299:256–259.
2. Kasten M, Hartmann C, Hampf J, et al. Genotype-phenotype relations for the Parkinson's disease genes *Parkin*, *PINK1*, *DJ1*: MDSGene systematic review. *Mov Disord* 2018;33:730–741.
3. Isonaka R, Rosenberg AZ, Sullivan P, et al. Alpha-synuclein deposition within sympathetic noradrenergic neurons is associated with myocardial noradrenergic deficiency in neurogenic orthostatic hypotension. *Hypertension* 2019;73:910–918.
4. Taipa R, Pereira C, Reis I, et al. DJ-1 linked parkinsonism (*PARK7*) is associated with Lewy body pathology. *Brain J Neurol* 2016;139:1680–1687.
5. Di Nottia M, Masciullo M, Verrigni D, et al. DJ-1 modulates mitochondrial response to oxidative stress: clues from a novel diagnosis of *PARK7*. *Clin Genet* 2017;92:18–25.
6. Taghavi S, Chaouni R, Tafakhori A, et al. A clinical and molecular genetic study of 50 families with autosomal recessive parkinsonism revealed known and novel gene mutations. *Mol Neurobiol* 2018;55:3477–3489.
7. Richarme G, Mihoub M, Dairou J, Bui LC, Leger T, Lamouri A. Parkinsonism-associated protein DJ-1/park7 is a major protein deglycase that repairs methylglyoxal- and glyoxal-glycated cysteine, arginine, and lysine residues. *J Biol Chem* 2015;290:1885–1897.

# Neurology<sup>®</sup>

## Peripheral synucleinopathy in a *DJI* patient with Parkinson disease, cataracts, and hearing loss

Derek P. Narendra, Risa Isonaka, Diana Nguyen, et al.

*Neurology* 2019;92;1113-1115 Published Online before print April 26, 2019

DOI 10.1212/WNL.00000000000007614

**This information is current as of April 26, 2019**

<b>Updated Information &amp; Services</b>	including high resolution figures, can be found at: <a href="http://n.neurology.org/content/92/23/1113.full">http://n.neurology.org/content/92/23/1113.full</a>
<b>References</b>	This article cites 7 articles, 2 of which you can access for free at: <a href="http://n.neurology.org/content/92/23/1113.full#ref-list-1">http://n.neurology.org/content/92/23/1113.full#ref-list-1</a>
<b>Subspecialty Collections</b>	This article, along with others on similar topics, appears in the following collection(s): <b>All Movement Disorders</b> <a href="http://n.neurology.org/cgi/collection/all_movement_disorders">http://n.neurology.org/cgi/collection/all_movement_disorders</a> <b>All Neuro-ophthalmology</b> <a href="http://n.neurology.org/cgi/collection/all_neuroophthalmology">http://n.neurology.org/cgi/collection/all_neuroophthalmology</a> <b>Parkinson's disease/Parkinsonism</b> <a href="http://n.neurology.org/cgi/collection/parkinsons_disease_parkinsonism">http://n.neurology.org/cgi/collection/parkinsons_disease_parkinsonism</a>
<b>Permissions &amp; Licensing</b>	Information about reproducing this article in parts (figures, tables) or in its entirety can be found online at: <a href="http://www.neurology.org/about/about_the_journal#permissions">http://www.neurology.org/about/about_the_journal#permissions</a>
<b>Reprints</b>	Information about ordering reprints can be found online: <a href="http://n.neurology.org/subscribers/advertise">http://n.neurology.org/subscribers/advertise</a>

*Neurology*® is the official journal of the American Academy of Neurology. Published continuously since 1951, it is now a weekly with 48 issues per year. Copyright © 2019 American Academy of Neurology. All rights reserved. Print ISSN: 0028-3878. Online ISSN: 1526-632X.

