

8-3-2018

Gamification of Hospital Utilization: Incorporating Cost-consciousness in Daily Practices.

Peter J Tomaselli
Thomas Jefferson University

Dimitrios Papanagnou, MD
Thomas Jefferson University

Jonathan E Karademos
Thomas Jefferson University

Elizabeth Teixeira
Thomas Jefferson University

Xiao Chi Zhang
Thomas Jefferson University

Follow this and additional works at: <https://jdc.jefferson.edu/emfp>

 Part of the [Emergency Medicine Commons](#)

[Let us know how access to this document benefits you](#)

Recommended Citation

Tomaselli, Peter J; Papanagnou, MD, Dimitrios; Karademos, Jonathan E; Teixeira, Elizabeth; and Zhang, Xiao Chi, "Gamification of Hospital Utilization: Incorporating Cost-consciousness in Daily Practices." (2018). *Department of Emergency Medicine Faculty Papers*. Paper 191.
<https://jdc.jefferson.edu/emfp/191>

This Article is brought to you for free and open access by the Jefferson Digital Commons. The Jefferson Digital Commons is a service of Thomas Jefferson University's [Center for Teaching and Learning \(CTL\)](#). The Commons is a showcase for Jefferson books and journals, peer-reviewed scholarly publications, unique historical collections from the University archives, and teaching tools. The Jefferson Digital Commons allows researchers and interested readers anywhere in the world to learn about and keep up to date with Jefferson scholarship. This article has been accepted for inclusion in Department of Emergency Medicine Faculty Papers by an authorized administrator of the Jefferson Digital Commons. For more information, please contact: JeffersonDigitalCommons@jefferson.edu.

Gamification of Hospital Utilization: Incorporating Cost-consciousness in Daily Practices

Peter J. Tomaselli¹, Dimitrios Papanagnou¹, Jonathan E. Karademos², Elizabeth Teixeira³, Xiao Chi Zhang¹

1. Department of Emergency Medicine, Thomas Jefferson University, Philadelphia, USA 2. Department of Emergency Medicine, Thomas Jefferson University Hospitals, Philadelphia, USA 3. Department of Emergency Medicine, Thomas Je, philadelphia, USA

✉ **Corresponding author:** Xiao Chi Zhang, xzhang09@gmail.com

Disclosures can be found in Additional Information at the end of the article

Abstract

Healthcare costs in the United States have skyrocketed over the past decade, contributing to an estimated \$750 billion in wasteful spending annually. Despite the demand to improve residency education on value-based, cost-conscious healthcare, there is no consensus on how to best teach this practice. Traditional lectures have failed to demonstrate enduring change in clinical practice patterns, provider attitudes, and reductions in hospital expenditures. We sought to evaluate whether gamification is an effective pedagogical tool to teach cost-consciousness to emergency medicine (EM) residents by creating a 60-minute interactive session based on the popular gameshow, the Price is Right. Costs and associated charges for common laboratory tests, radiographic studies, medications, and common physical resources typically found in the emergency department (ED) were first obtained through direct communication with the ED clinical director and hospital leadership. The session itself consisted of three phases with several Price-is-Right-themed games, which included realistic visual stimuli reminiscent of the gameshow that were created by the authors using the PowerPoint. Formal quantitative and qualitative feedback was solicited at the end of the session. Quantitative evaluation of the educational intervention was obtained through a 22-item questionnaire using a five-point Likert-type scale from 19 of the 22 enrolled residents (86% response rate). Responses were generally very positive with an overall course rating score of 4.16 (SD +/- 0.90). Qualitative feedback identified learners' predilection for gamified delivery of nonclinical content during conference. The majority of residents (89%) recommend the activity to be used in subsequent offerings to other learners. With healthcare costs on the rise, our feasibility study demonstrated that gamification is an effective way to teach mindful, cost-conscious care to EM residents. Gamification offers a fun and engaging alternative that should be further utilized in EM educational formats. Future studies are needed to longitudinally assess the learner retention and cost-containment practices.

Received 06/27/2018

Review began 07/06/2018

Review ended 08/01/2018

Published 08/03/2018

© Copyright 2018

Tomaselli et al. This is an open access article distributed under the terms of the Creative Commons Attribution License CC-BY 3.0., which permits unrestricted use, distribution, and reproduction in any medium, provided the original author and source are credited.

Categories: Emergency Medicine, Medical Education, Quality Improvement

Keywords: healthcare cost reduction, medical education, gamification

Introduction

Healthcare costs in the United States have skyrocketed, making the United States one of the few countries with the highest healthcare expenditures in the world. Nearly 18% of the 2016 US gross domestic product (GDP), \$3.3 trillion, was spent on healthcare, compared to only five percent, or \$27.2 billion spent in 1960 [1]. Several attempts to control the rising costs have

How to cite this article

Tomaselli P J, Papanagnou D, Karademos J E, et al. (August 03, 2018) Gamification of Hospital Utilization: Incorporating Cost-consciousness in Daily Practices. Cureus 10(8): e3094. DOI 10.7759/cureus.3094

included insurance reform, malpractice reform, and prescription reform [2-4]. Other efforts have centered around the development of provider cost-conscious decision rules (i.e., Canadian Head Computed Tomography Rules; Ottawa Ankle Rules). Despite these efforts, however, a number of studies [5-7] have shown that most physicians, particularly resident physicians, are still unaware of the costs of the tests and interventions they routinely order.

As healthcare costs are expected to rise, physicians will require training that will provide them with value-based, cost-conscious practices that can be applied throughout their career (i.e., training them on the financial impact of their clinical decision making) [8]. Emergency medicine (EM) represents an area of particular need for cost education. As of 2012, 20% of payment for emergency department (ED) services was out-of-pocket [9], with the potential of adding a significant financial burden on patients and their families.

Traditional lectures have failed to demonstrate sustainable changes in clinical practice patterns, provider attitudes, and reductions in hospital expenditures [10]. As gamification has shown promise for increasing both medical knowledge and learner engagement [11], the authors propose an interactive learning solution utilizing the popular “The Price is Right” television show to teach cost-conscious care that has been successfully integrated into the EM residency curriculum at the Thomas Jefferson University in Philadelphia, PA.

Technical Report

Study setting

Learners Targeted: EM Residents

Group size: six to eight learners per group.

Personnel: An EM faculty member presented the activity and, along with three faculty facilitators, provided supervision for the cost game. Faculty members helped keep score; answer questions that came up during the activity; and assisted in determining the items, as well as the actual charges and costs, from the resources obtained from the hospital.

Materials: Whiteboard, dry-erase board (one per group), Powerpoint.

Accreditation Council for Graduate Medical Education (ACGME) Milestones: This activity provides learners with the opportunity to practice systems-based management (i.e., SBP-2, Improving Health Care Delivery and Flow) and patient care (PC-3, Diagnostic Testing). During the activity, learners must demonstrate an awareness of medical costs and an ability to synthesize this knowledge in cost-effective practices (Table 1).

| ACGME milestone | Medical cost game activity | Relevant educational learning theories |
|--|---|---|
| PC3: Diagnostic testing | "Come on Down," "More or Less," "Cliffhanger" | <i>Behaviorism</i> : Positive behavior is reinforced by progression in the medical cost game activities |
| SBP2: Improving healthcare delivery and flow | "Cost-Efficient Dispositions" | <i>Constructivism</i> : Players use previous knowledge to construct alternative pathways in patient-disposition |

TABLE 1: Emergency medicine-specific Accreditation Council for Graduate Medical Education (ACGME) milestones and learning theories associated with medical cost game activity.

Detailed activity description

A 60-minute interactive session based on the popular gameshow, The Price is Right, was developed that incorporated concepts from both constructivist and behaviorist theories: residents were able to use their experiences from previous patient management in the emergency department (ED) to navigate decisions and plans that demanded cost-consciousness in hopes of refining their understanding of cost utilization (constructivism) and incrementally build on their existing schemas of healthcare costs to improve performance and foster independent thinking with regards to cost-conscious patient care (behaviorism). The session was incorporated into the EM didactic residency curriculum as one-time special conference didactic. Costs and associated charges for common laboratory tests, radiographic studies, medications, and common physical resources typically found in the ED were first obtained through direct communication with the ED clinical director and leadership from the Departments of Radiology, Pharmacy, Pathology and Supply Chain, respectively (Figure 1). The session itself consisted of three phases with several themed games from the show; realistic visual stimuli reminiscent of the gameshow were created by the authors through the use of the PowerPoint. Learners were not given any medical costs or pre-assignment before the conference didactic.

Common Orders with Charges and (Costs)

| | |
|-------------------------|-------|
| Hematology | |
| • CBC | \$74 |
| • PT/INR | \$52 |
| • PTT | \$135 |
| • Type and Screen | \$212 |
| • ABO/Rh | \$134 |
| Chemistry | |
| • BMP | \$422 |
| • CMP | \$785 |
| • LFT | \$333 |
| • Calcium, Ionized | \$192 |
| • Magnesium | \$92 |
| • Lipase | \$96 |
| • Lactate, whole blood | \$147 |
| • Troponin T | \$123 |
| • NT-proBNP | \$476 |
| • CPK | \$90 |
| • Ethanol | \$148 |
| • Acetaminophen | \$283 |
| • Salicylates | \$99 |
| • D-Dimer | \$114 |
| • Blood Gas, Venous | \$272 |
| • hCG Quantitative | \$200 |
| • TSH w/ reflex T4 | \$234 |
| • ESR | \$33 |
| • CRP | \$73 |
| Microbiology | |
| • Blood Culture (1 Set) | \$278 |

| | |
|---|--------------------|
| Urine | |
| • Drugs of Abuse | \$200 |
| • UA + Culture | \$43 + \$92 |
| POCT | |
| • Glucose | Free |
| Imaging | |
| • CXR, portable | \$421 |
| • CXR, 2 view | \$460 |
| • CT head w/o | \$2111 |
| • CT c-spine w/o | ~\$1800 |
| • CT Chest w/ | \$3037 |
| • CT Abd/Pelvis w/ | \$3605 |
| • MR Brain w/o | \$3943 |
| • MR spine (per section) | \$3943 |
| • US Abd Limited | \$1257 |
| • US Pelvis | \$964 |
| Medications (Costs in parentheses) | |
| • 0.9% NaCl (1L) | \$25.84 (\$5.17) |
| • D50W | \$47.88 (\$9.58) |
| • Tylenol 650mg PO | \$10 (\$0.16) |
| • Aspirin Chewable Tablet | \$5 (\$0.21) |
| • Tdap | \$222.60 (\$44.52) |
| • Norco 7.5-325 PO | \$5 (\$0.83) |
| • Lidocaine 1% | \$5.48 (\$1.31) |
| • Dilaudid 1mg IV | \$10.07 (\$2.26) |
| • Motrin Tablet | \$5.00 (\$0.21) |
| • Toradol 15mg IV | \$20.24 (\$4.11) |
| • Lidocaine Patch 4% | \$5.71 (\$1.53) |
| • Ativan 1mg IV | \$5.71 (\$0.97) |
| • Reglan 10mg IV | \$3.18 (\$1.29) |
| • Morphine 4mg IV | \$5.02 (\$1.10) |
| • Naproxen PO | \$5.00 (\$1.24) |
| • Zofran 4mg IV | \$5.01 (\$0.71) |
| • Percocet 5-325 PO | \$6.35 (\$1.58) |

| | |
|--------------------------|--------------------|
| • Zosyn | \$84.74 (\$16.95) |
| • Vanco 2g | \$113.25 (\$22.65) |
| • Azithro 250mg | \$108.83 (\$21.77) |
| • Ceftriaxone 250mg | \$2.51 (\$0.90) |
| • Ceftriaxone 1g IV | \$85.25 (\$17.05) |
| • Diltiazem 5mg IV | \$59.74 (\$12.17) |
| • Midazolam 1mg IV | \$6.01 (\$1.24) |
| • Keppra 500mg IV | \$128.86 (\$25.77) |
| • Solumedrol 125mg | \$53.40 (\$10.68) |
| • Aztreonam 2g IV | \$394.21 (\$78.84) |
| • Tamiflu (one dose) | \$80.54 (\$16.11) |
| • Ciprofloxacin 500mg PO | \$25.50 (\$5.10) |
| • Flagyl 500mg PO | \$7.73 (\$1.48) |
| • Albumin 25% IV | \$1355 (\$379) |
| • Propofol 10mg/ml | \$178.20 (\$36) |
| • Naloxone 1mg IV | \$214.50 (\$43) |
| • RhoGAM 300mcg | \$476.95 (\$95) |
| • Pantoprazole 50mg IV | \$51.77 (\$10.35) |
| • Prednisone 10mg PO | \$3.16 (\$0.49) |
| • Methylpred 40mg IV | \$39.90 (\$7.98) |

| | |
|------------------------------|--------------|
| Supplies (Costs only) | |
| • 45in Crutch | \$8.67 each |
| • Knee Immobilizer | \$19.10 each |
| • C-collar | \$4.50 |
| • 18Fr Foley | \$16.21 |
| • Laceration Tray | \$3.15 |
| • I&D Tray | \$3.65 |
| • Miami J Collar | \$45.50 |
| • Sterile Gloves | \$1.46 |
| • Biopatch | \$5.99 |
| • Central Line Dressing | \$12.02 |
| • Chest Tube Kit | \$17.96 |
| • A-Line Insertion Kit | \$26.84 |
| • Central Line | \$105.19 |
| • Paracentesis Kit | \$32.15 |
| • LP Kit | \$11.90 |

FIGURE 1: Medical cost and charge examples.

Phase 1 evaluated the learners’ knowledge of common ED costs with three separate, successive games that were followed by a debriefing that discussed actual dollar values with residents. Game 1 - “Come on Down!” tasked teams to guess the charge for several ED medications and items (Figure 2). Answers were written on small dry-erase boards; the team that made a monetary estimate that was closest to the actual price, without going over, received a point. The actual cost of each medication was shown prior to moving on to the next item. Game 2 - “More or Less” tasked each team to approximate the charge of specific order sets at our institution (i.e., Asthma panels, Chest Pain panels, Gastrointestinal Bleed panels, and Sepsis panels) (Figure 3). An artificial charge was shown for a specific order set, and teams were asked whether the actual charge was “more or less” than this price point. One point was awarded for correct answers. Game 3 - “Cliffhanger” tasked teams to estimate the cost of several common ED supplies and medications priced between \$1.00 and \$10.00. Each dollar estimate from the actual cost resulted in an animated pixelated PowerPoint character that climbed up a steep ‘cost-cliff’ (Figure 4). After 16 possible “steps,” the character would fall off the cliff, indicating the end of the team’s turn. One point was given to each item that the team was able to correctly estimate the cost for prior to the character falling off the cliff. Each team was given a turn to play this game.



FIGURE 2: Game 1: Come on Down.

How to play: 1) Select one representative from each team. 2) Each representative must guess how much an emergency department study/intervention charges. 3) Order is based on a clockwise manner (everyone gets to guess first and last). 4) The team with the closest guess without going over gets one point.

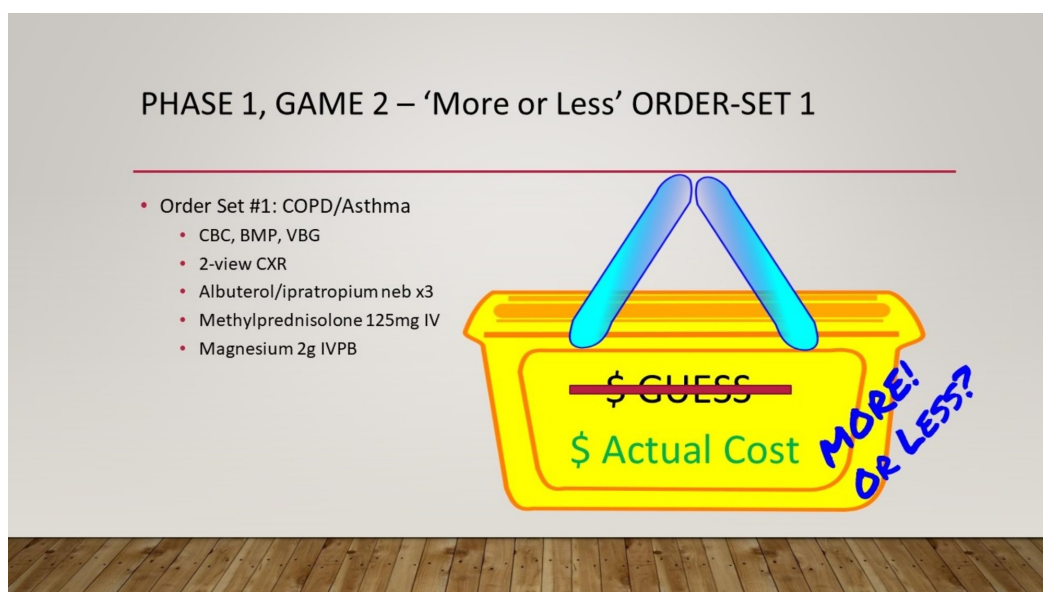


FIGURE 3: Game 2: More or Less.

How to play: 1) Select one representative from each team. 2) Each team is given the cost of an emergency department order set at your institution. 3) Each team must guess whether the stated cost is higher or lower than the cost. 4) The team that guesses correctly gets one point.

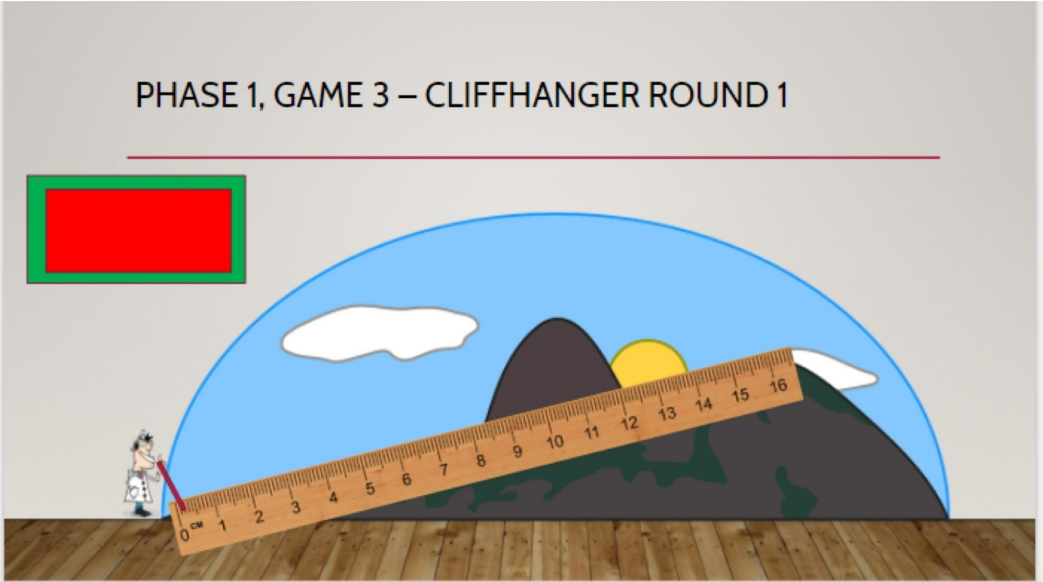


FIGURE 4: Game 3: Cliffhanger.

How to play: 1) Select one representative from each team. 2) Each team must guess the cost of an emergency department item. 3) For each \$1 off the actual price, the cartoon doctor will climb one unit. 4) Game ends when the cartoon doctor falls off the cliff. 5) Each item that the team that guesses correctly gets one point.

Phase 2 challenged learners to practice cost-conscious care on an undifferentiated patient while adhering to evidence-based clinical practices (Figure 5). Teams were given a guide sheet that included the charge of the most common orders within the ED. A patient scenario was provided to teams, and members were asked to collectively determine the most cost-efficient disposition, while correctly obtaining the patient diagnosis and adhering to best practices in ED care. During this phase, each team was supervised by an EM faculty member who provided the team with prompts (i.e., lab results, electrocardiograms, imaging) when asked. Points were awarded based on the most cost-effective plan and accuracy of clinical diagnosis.

PHASE 2, COST-EFFICIENT DISPO

- CC: Cough
- HPI: 18yo F here for chest pain, cough that started 3 days ago
- PMH: Lupus, resolved DVT (off AC)
- PSH: None
- Meds: OCP
- SH: 1ppd smoker, just returned from Puerto Vallarta
- Allergies: None

- Vitals: T 98.8F, HR 105, BP 130/84, RR 24, 97% RA
- Physical Exam: tachycardic, regular; lungs CTAB; abdomen benign; 2+ pulses in all extremities, no edema/erythema/tenderness
- Pain improves with sitting forward

FIGURE 5: Game 4: Cost-efficient dispo.

How to play: 1) All teams will be given a patient encounter. 2) Each team must reach the appropriate disposition by ordering from the available diagnostic or therapeutic emergency department interventions. 3) Upon completion, the team that reaches the correct disposition while spending the least amount (\$) will be rewarded by the maximum points (four points). 4) The other teams will be awarded in the reverse order based on their healthcare spending. NOTE: Inappropriate disposition without sufficient workup will not be awarded with any points. Each case will be reviewed by the instructor to see whether there is sufficient workup to warrant a disposition.

Phase 3 concluded with a 'Showcase Sign-Out,' where learners were asked to estimate the cost of a comprehensive medical work-up (Figure 6). A final case was given, and detailed a full comprehensive work-up, inclusive of laboratory tests, medications administered, and imaging performed. Adhering to "The Price is Right" rules, the team that made a monetary estimate closest to the actual price of the showcase, without going over, was awarded five points. As an added bonus, any team(s) correctly estimating within \$1000 of the amount was/were given an additional five points. Formal quantitative and qualitative feedback was solicited at the end of the session.



FIGURE 6: Game 5: Showcase Signout.

How to play: 1) Each team must guess the cost of a comprehensive workup (to be revealed) in 60 seconds. 2) The team that guesses the closest to the actual cost without going over will receive five points!!! Bonus: Extra five points for guessing within \$1000 of the cost!

Results

Quantitative evaluation of the educational intervention was obtained through a 22-item questionnaire using a five-point Likert scale from 19 of the 22 enrolled residents (86% response rate). Responses were generally positive, with an overall course rating score of 4.16 (SD +/- 0.90) (Figure 7). Nearly all learners reported increased knowledge of hospital costs (4.58 +/- 0.61); understanding of cost concepts (4.42 +/- 0.69); and insight into increased spending (4.21 +/- 0.71). Learners reported that the session was structured in a sequence that was logical and easy to follow (4.05 +/- 0.90), and that the interactive nature of the game complemented their existing knowledge on cost practices (4.47 +/- 0.68). Qualitative feedback identified learners'

predilection for gamified delivery of nonclinical content during the conference. The majority of residents (89%) recommend the activity be used in subsequent offerings for other learners. During the phase 1 debriefing, learners consistently expressed surprise at the high costs of testing and medications. This led to more questions from learners regarding additional items not included in phase 1. Ultimately it provided a great transition to phase 2 where the additional costs of items were revealed.

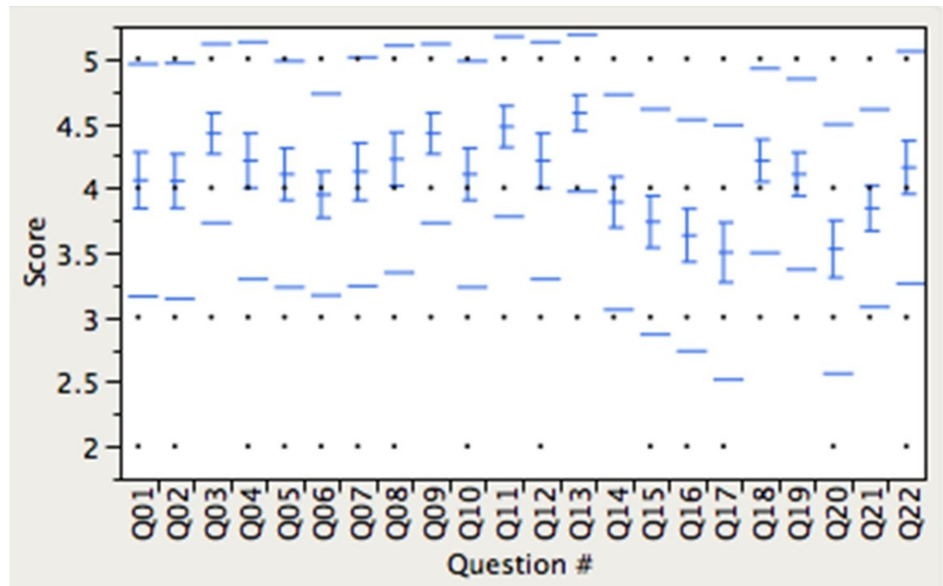


FIGURE 7: Post-medical cost game survey response.

All questions were based on a five-point likert scale (1 = strongly disagree, 5 = strongly agree) or (1 = extremely poor, 5 = excellent). Detailed questions are listed in Appendix 1.

Discussion

The design of our activity allowed us to first educate residents about the costs of individual tests, medications, and healthcare supplies. The repetition of prices, the surprise many residents felt regarding the cost of commonly ordered tests, and the points awarded for correct responses employed a behaviorist model for the most basic level of understanding. As we progressed to Phase 2, a constructivist approach was utilized, with residents synthesizing both the knowledge gained in Phase 1 with their prior medical knowledge and direct clinical experience to formulate responsible, cost-efficient plans. These learning objectives are in line with the ACGME objectives for diagnostic studies (PC3) and systems-based management (SBP2), with strong scores in increased knowledge of hospital cost and clearer understanding of cost concepts.

Over the course of this activity, the authors noted that the residents who were highly interactive during the game appreciated the educational session the most. This was contingent on learners suspending their preconceived notions about healthcare costs and fully immersing themselves in the activity.

The learner to faculty ratio was approximately seven to eight students per faculty. We felt this ratio was crucial for the overall success of this didactic as it allowed multiple residents from each training level to provide their own perspectives and receive faculty input within the allotted time. Allocating the correct amount of time can be challenging with these types of lectures. Insufficient or overabundant time allotted per lecture can result in the failure to cover

all necessary materials or failure to capture the learners' attention, respectively. While 60 minutes were allocated for this lecture, we believe that future iterations should allow for at least 70 minutes to allow for smoother transitions between each phase as well as time to field additional questions. The medical cost handout provided to learners during Phase 2 was very well received as it decreased the cognitive load when calculating the total cost of the workup and served as a convenient take-home handout due to its convenient formatting that reflected the existing order panels for the most commonly ordered ED items.

The study was limited in power, as it was conducted at a single center with a small sample size of EM learners, with cost and charges only applicable to the authors' home institution. Furthermore, the authors were only able to provide paired cost and charges of limited items in the ED. While the authors would have liked to demonstrate how hospital charges varied with insurance companies and individualized plans, the overarching goal was to determine if utilizing a game to reflect on healthcare costs was feasible in EM resident learners. The authors posit that the proposed structure described in this educational technical report can be easily generalized to other institutions with their respective costs and charges.

Conclusions

With healthcare costs on the rise, our feasibility study demonstrated that gamification is an effective way to teach mindful, cost-conscious care to EM residents. Gamification offers a fun and engaging alternative that should be further utilized in EM educational formats. Future studies are needed to longitudinally assess learner retention and cost-containment practices.

Appendices

Appendix 1: Post Medical Cost Game Evaluation Survey. Questions 1-22 were evaluated based on a 5-point Likert scale (1=strongly disagree, 5=strongly agree) or (1=extremely poor, 5=excellent).

1. The course presented skills in a helpful sequence
2. The course provided an appropriate balance between instruction and practice
3. The course was appropriate for the stated level of the class
4. The course was organized in a way that helped me learn
5. The course provided a mixture of explanation and practice
6. The course was effectively organized
7. The course lectures complemented the EM curriculum
8. The course instructions (including Powerpoint directions and verbal instructions) were clear
9. The course helped me understand concepts (i.e. cost-conscious care) more clearly
10. Instructions for the game content were clear

11. The interactive game complemented my understanding of the lectures
12. The section helped to complement the residency training
13. Increased knowledge in hospital cost
14. The course provided guidance on how to become a competent professional
15. The course developed my ability to order hospital tests critically
16. The course helped me improve the way I order tests for workup
17. The course developed my ability to provide constructive critiques to others
18. The course gave me a deeper insight into the topic
19. In this course, I learned a great deal
20. The course improved my problem-solving skills
21. The course developed my ability to think critically about the subject
22. Overall, I would rate this presentation/instruction as:

Additional Information

Disclosures

Human subjects: Consent was obtained by all participants in this study. Thomas Jefferson University issued approval 45 CFR 46.101. This study was determined to be EXEMPT from IRB review on 04/03/2018 pursuant to Title 45 Code of Federal Regulations Part 46.101(b) governing exempted protocol declarations. **Animal subjects:** All authors have confirmed that this study did not involve animal subjects or tissue. **Conflicts of interest:** In compliance with the ICMJE uniform disclosure form, all authors declare the following: **Payment/services info:** All authors have declared that no financial support was received from any organization for the submitted work. **Financial relationships:** All authors have declared that they have no financial relationships at present or within the previous three years with any organizations that might have an interest in the submitted work. **Other relationships:** All authors have declared that there are no other relationships or activities that could appear to have influenced the submitted work.

Acknowledgements

The authors would like to acknowledge Frederick Randolph Jr., MD, Vice Chair of the Thomas Jefferson University Department of Emergency Medicine for his support in obtaining data for the study.

References

1. Hartman M, Martin AB, Espinosa N, Catlin A; The National Health Expenditure Accounts Team: National Health Care spending in 2016: spending and enrollment growth slow after initial coverage expansions. *Health Affairs*. 2018, 37:150-160. [10.1377/hlthaff.2017.1299](https://doi.org/10.1377/hlthaff.2017.1299)
2. Levitt L: Single-payer health care: opportunities and vulnerabilities. *J Am Med Assoc*. 2018,

- 319:1646-1647. [10.1001/jama.2018.3997](https://doi.org/10.1001/jama.2018.3997)
3. Yu H, Greenberg M, Haviland A: The impact of state medical malpractice reform on individual-level health care expenditures. *Health Services Res.* 2017, 52:2018-2037. [10.1111/1475-6773.12789](https://doi.org/10.1111/1475-6773.12789)
4. Gaffney A, Lexchin J, US; Canadian Pharmaceutical Policy Reform Working Group: Healing an ailing pharmaceutical system: prescription for reform for United States and Canada. *Br Med J.* 2018, 361:k1039. [10.1136/bmj.k1039](https://doi.org/10.1136/bmj.k1039)
5. Ryskina KL, Smith CD, Weissman A, et al.: U.S. Internal Medicine Residents' knowledge and practice of high-value care: a national survey. *Acad Med.* 2015, 90:1373-1379. [10.1097/acm.0000000000000791](https://doi.org/10.1097/acm.0000000000000791)
6. Vijayasarithi A, Duszak R Jr, Gelbard RB, Mullins ME: Knowledge of the costs of diagnostic imaging: a survey of physician trainees at a large academic medical center. *J Am Coll Radiol.* 2016, 13:1304-1310. [10.1016/j.jacr.2016.05.009](https://doi.org/10.1016/j.jacr.2016.05.009)
7. Hoffman KA, Mancini M: Emergency health care professionals' understanding of the costs of care in the emergency department. *J Am Osteopathic Assoc.* 2017, 117:359-364. [10.7556/jaoa.2017.073](https://doi.org/10.7556/jaoa.2017.073)
8. Stammen LA, Stalmeijer RE, Paternotte E, et al.: Training physicians to provide high-value, cost-conscious care: a systematic review. *J Am Med Assoc.* 2015, 314:2384-2400. [10.1001/jama.2015.16353](https://doi.org/10.1001/jama.2015.16353)
9. Hing E, Rui P, Ashman J: Expected source of payment at emergency department visits for adults aged 18-64 for the United States and in the five most populous states, 2012. *Natl Center Health Stat Data Brief.* 2016, 253:1-8.
10. Varkey P, Murad MH, Braun C, Grall KJ, Saoji V: A review of cost-effectiveness, cost-containment and economics curricula in graduate medical education. *J Eval Clin Pract.* 2010, 16:1055-1062. [10.1111/j.1365-2753.2009.01249.x](https://doi.org/10.1111/j.1365-2753.2009.01249.x)
11. Liteplo AS, Carmody K, Fields MJ, Liu RB, Lewiss RE: SonoGames: effect of an innovative competitive game on the education, perception, and use of point-of-care ultrasound. *J Ultrasound Med.* 2018, [10.1002/jum.14606](https://doi.org/10.1002/jum.14606)