

3-31-2023

## Intratumoral Bacteria in Uveal Melanoma: A Case Report

Katherine Vega Escobar  
*Thomas Jefferson University*


Paola Ordonez Armijos  
*Thomas Jefferson University*

Tatyana Milman  
*Thomas Jefferson University*

Carol L. Shields  
*Thomas Jefferson University*

Ralph C. Eagle Jr.  
*Thomas Jefferson University*

Follow this and additional works at: <https://jdc.jefferson.edu/willsfp>

 Part of the [Oncology Commons](#), and the [Ophthalmology Commons](#)

[Let us know how access to this document benefits you](#)

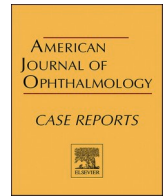
---

### Recommended Citation

Vega Escobar, Katherine; Ordonez Armijos, Paola; Milman, Tatyana; Shields, Carol L.; and Eagle, Ralph C. Jr., "Intratumoral Bacteria in Uveal Melanoma: A Case Report" (2023). *Wills Eye Hospital Papers*. Paper 182.

<https://jdc.jefferson.edu/willsfp/182>

This Article is brought to you for free and open access by the Jefferson Digital Commons. The Jefferson Digital Commons is a service of Thomas Jefferson University's [Center for Teaching and Learning \(CTL\)](#). The Commons is a showcase for Jefferson books and journals, peer-reviewed scholarly publications, unique historical collections from the University archives, and teaching tools. The Jefferson Digital Commons allows researchers and interested readers anywhere in the world to learn about and keep up to date with Jefferson scholarship. This article has been accepted for inclusion in Wills Eye Hospital Papers by an authorized administrator of the Jefferson Digital Commons. For more information, please contact: [JeffersonDigitalCommons@jefferson.edu](mailto:JeffersonDigitalCommons@jefferson.edu).



## Intratumoral bacteria in uveal melanoma: A case report

Katherine Vega Escobar<sup>a</sup>, Paola Ordonez Armijos<sup>a</sup>, Tatyana Milman<sup>a,b</sup>, Carol L. Shields<sup>c</sup>,  
Ralph C. Eagle Jr.<sup>a,b,\*</sup>

<sup>a</sup> Department of Pathology, Wills Eye Hospital, Sidney Kimmel Medical College of Thomas Jefferson University, Philadelphia, PA, USA

<sup>b</sup> Department of Ophthalmology, Wills Eye Hospital, Sidney Kimmel Medical College of Thomas Jefferson University, Philadelphia, PA, USA

<sup>c</sup> Ocular Oncology Service, Wills Eye Hospital, Sidney Kimmel Medical College of Thomas Jefferson University, Philadelphia, PA, USA

### ARTICLE INFO

#### Keywords:

Uveal melanoma  
Intratumoral bacteria  
Intratumoral bacteria uveal melanoma  
Pseudocystalline scleropathy

### ABSTRACT

**Purpose:** Intratumoral bacteria and their potential application to cancer immunotherapy have been a topic of interest in recent studies. To our knowledge, bacteria in uveal melanoma have not been previously reported. **Observations:** We describe a patient with a large choroidal melanoma, measuring 18 × 16 mm in basal dimension and 15 mm in ultrasonographic thickness, managed by plaque brachytherapy. At the time of plaque removal, a prophylactic scleral patch graft was placed to protect from anticipated scleral necrosis. Progressive ocular ischemia led to a blind and painful eye. The enucleated eye demonstrated an extensively necrotic and heavily pigmented mushroom-shaped regressed ciliochoroidal mass deep to the scleral patch graft. Numerous Gram-positive cocci were noted within the regressed uveal melanoma and the adjacent sclera. **Conclusions and Importance:** This case highlights the fact that regressed uveal melanomas can contain intratumoral bacteria.

### 1. Introduction

Microorganisms have a complicated relationship with cancer. Microbial infections have been noted not only to be drivers of carcinogenesis,<sup>1,2</sup> but have also been implicated in exceptional therapeutic responses.<sup>3,4</sup>

The impact of the intestinal microbiota on tumor biology, including processes like tumor transformation, progression, and response to various therapies, has been established and described in various neoplasms, particularly cutaneous melanoma and lung carcinoma.<sup>5–8</sup> The exact mechanisms by which bacteria or bacterial components can modulate cancer growth and/or therapy have not been fully elucidated.<sup>6</sup> It is hypothesized that the disorganized and permeable vasculature may allow circulating bacteria to enter and colonize the neoplastic tissue.<sup>9,10</sup> A recent comprehensive analysis of the tumor microbiome across different cancer types, found that each tumor type has a distinct microbiome composition, associated with a specific metabolic function and specific clinical features.<sup>11</sup> To our knowledge, there have been no prior peer-reviewed studies focusing on the role of the microbiome in uveal melanoma. Herein, we report a unique case of a patient with uveal melanoma, treated with plaque brachytherapy. Three years after treatment, histopathology of the blind and painful enucleated eye disclosed

numerous bacteria within the residual tumor.

### 2. Case report

A 54-year-old white female with a past medical history of hypothyroidism and autoimmune hepatitis, previously treated with azathioprine, was referred to the Ocular Oncology Service at Wills Eye Hospital for evaluation of a ciliary body tumor in her right eye. Visual acuity was 20/30 in the right eye and 20/20 in the left eye. Examination of the right eye revealed an inferotemporal acoustically hollow, variably pigmented ciliochoroidal mass, measuring 18 × 16 mm in basal diameter and 15 mm in apical height, compatible with a large ciliochoroidal melanoma (Fig. 1). There was no evidence of extraocular extension. The left eye was unremarkable.

Both enucleation and plaque brachytherapy were discussed with the patient and she chose to have radiotherapy. The large tumor required a high dose of radiation. Iodine 125 plaque brachytherapy (22 mm round full plaque with radiation doses of 7000 cGy to the tumour apex, 7100 cGy to the tumour base, 5200 cGy to the optic disc, 6500 cGy to macula and 13900 cGy to the lens) was applied. Due to the significant risk for intraocular ischemia<sup>12–15</sup> and scleral necrosis,<sup>16–18</sup> intravitreal bevacizumab and a prophylactic scleral patch graft were performed at the

\* Corresponding author. Department of Pathology, Wills Eye Hospital, 840 Walnut Street, Suite 1410 Philadelphia, PA, 19107, USA.

E-mail address: [reagle@willseye.org](mailto:reagle@willseye.org) (R.C. Eagle).

<https://doi.org/10.1016/j.ajoc.2023.101833>

Received 7 July 2022; Received in revised form 7 February 2023; Accepted 26 March 2023

Available online 31 March 2023

2451-9936/© 2023 Published by Elsevier Inc. This is an open access article under the CC BY-NC-ND license (<http://creativecommons.org/licenses/by-nc-nd/4.0/>).

time of plaque removal. Fine needle aspiration biopsy for molecular genetic studies performed at the time of plaque radiotherapy, disclosed disomy 3, disomy 6, disomy 8 (TCGA class A) and a *GNAQ* gene mutation.

The response to plaque brachytherapy was excellent: the tumor regressed from 15 to 7.5 mm in thickness. However, three years following treatment, the patient had developed chronic ocular ischemia with inflammation and radiation maculopathy that reduced her visual acuity to hand movements. There was no evidence of radiation-induced scleritis, conjunctivitis or uveitis. The patient initially responded to intraocular corticosteroids and topical antibiotics, but her eye became blind and painful and was enucleated four years after the plaque brachytherapy.

Histopathologic evaluation of the globe showed a heavily pigmented and extensively necrotic mushroom-shaped, regressed ciliochoroidal melanoma that was 7.5 mm in thickness. During initial assessment, large colonies of Gram-positive cocci were observed in the interface between the scleral patch graft and the underlying sclera (Fig. 3). These bacteria had not incited an acute inflammatory response, reminiscent of the pattern seen in infectious pseudocrystalline keratopathy. The tissue Gram stain used to assess the bacteria beneath the scleral patch graft disclosed large basophilic foci within the necrotic tumor that contained numerous Gram-positive cocci that occurred singly and in short chains (Fig. 2). Similarly, these bacteria had not incited an acute inflammatory response. No apparent communication between the bacteria in the episcleral cleft and the tumor was noted.

### 3. Discussion

We report the unusual observation of bacteria within an extensively necrotic ciliochoroidal melanoma following high dose plaque brachytherapy with a prophylactic scleral patch graft. The authors have not observed bacteria within a uveal melanoma previously.

The patient subsequently received sub-Tenon's and intraocular corticosteroid injections and intraocular anti-VEGF therapy for radiation complications. The exact mechanism by which the bacteria colonized the tumor in the patient is not entirely clear. The presence of the bacterial colonies underneath the patch graft suggests that the bacteria within the eye represent a secondary exogenous infection that entered the necrotic tumor through a sclera weakened by radiation-induced necrosis. Endogenous seeding via the circulation, as has been documented in prior studies<sup>11</sup> is considered unlikely. Blood cultures were not performed, but the patient showed no sign of a systemic infection. The patient's history of intraocular and peri-ocular steroid injections and immunosuppressive therapy for autoimmune hepatitis might be additional factors contributing to invasion.

Prior studies have demonstrated that interactions between bacteria, cancer cells, and the surrounding microenvironment can induce changes

in tumor-infiltrating immune cells, cytokines and chemokines that can contribute to tumor regression.<sup>19-21</sup> or formation. The importance of immune microenvironmental modulation by microorganisms has been well-documented in cutaneous melanoma, but not in uveal melanoma.<sup>20</sup> Kalaora et al. analyzed the intratumour microbiota and the HLA peptides derived from these bacteria in metastases from 17 cutaneous melanoma and showed that the bacteria that colonize cutaneous melanoma can enter melanoma cells, and that their peptides can be presented by the tumor's HLA-I and HLA-II molecules. The latter play a central role in T cell immunity, the modulation of immune function and the survival and response of cancer patients to therapy.<sup>20</sup> Another study demonstrated that vancomycin-sensitive bacteria can promote tumor formation in a murine model of colitis-associated colon cancer.<sup>22,23</sup> Prior research has revealed that bacterial strains have various methods of tumor suppression in different types of nonocular tumors.<sup>19</sup> Salmonella species, for example, kill tumor cells directly by inducing apoptosis and/or autophagy via a variety of mechanisms.<sup>19,24,25</sup> Listeria species also can kill tumor cells directly via activation of nicotinamide adenine dinucleotide phosphate oxidase and increased intracellular calcium.<sup>19,26</sup> Clostridium species can release bacterial toxins that can disrupt the structure of cellular membranes.<sup>19,27</sup> The bacteria in our tumor were Gram-positive cocci that were not identified by culture.

Extensive necrosis of uveal melanomas and overlying sclera frequently develop when large tumors are treated with high doses of radiation. Therefore, we believe that the necrosis in our patient's tumor was caused by plaque brachytherapy. Although we cannot entirely exclude the possibility, we doubt that intratumoral bacteria contributed to tumor necrosis.

### 4. Conclusion

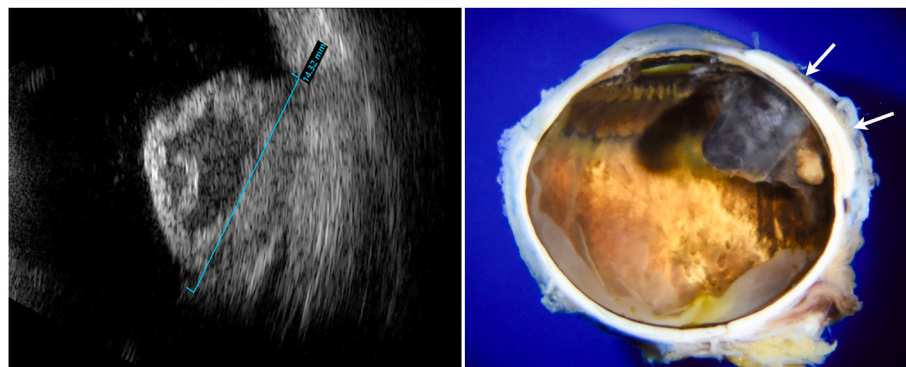
Although the mechanism of bacterial colonization in the case reported here is unusual and probably case-specific, the observation of bacteria within a uveal melanoma serves to draw our attention to studies that have shown colonization of tumors including melanomas at other sites. It may be worthwhile to evaluate other intraocular melanomas for this phenomenon, similar to what has been done for non-ocular melanoma. In that case, therapies targeting intratumoral microbiome may become relevant to intraocular melanoma.

### Patient consent

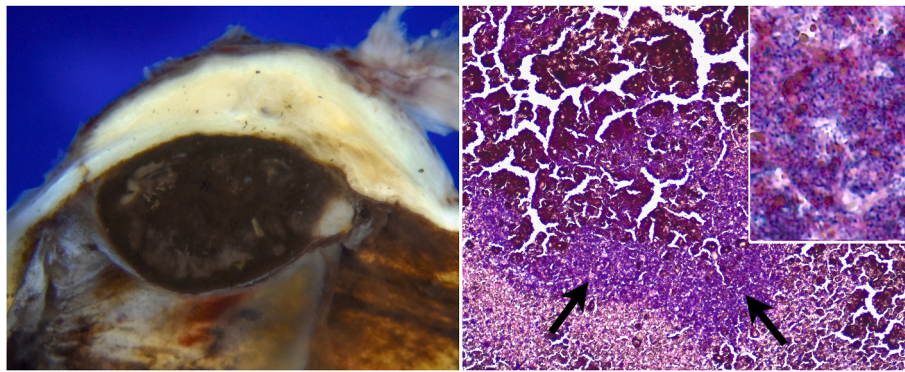
Consent to publish personal information and case details has been obtained from the patient.

### Authorship

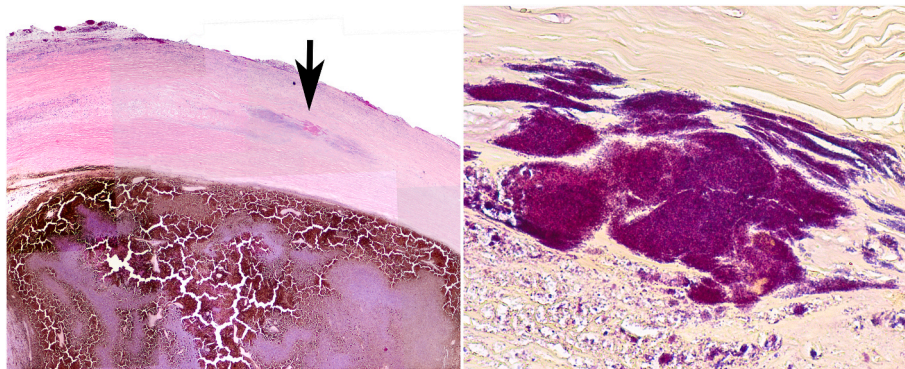
All authors attest that they meet the current ICMJE criteria for



**Fig. 1.** 1A. B-scan ultrasonography discloses a dome-shaped mass with echolucency following plaque radiotherapy. 1B. Macrophoto of enucleated eye shows heavily pigmented mushroom-shaped ciliochoroidal tumor deep to scleral patch graft, which focally thickens the sclera (arrows).



**Fig. 2.** 2A. Scleral patch graft markedly thickens sclera overlying intensely pigmented regressed melanoma. 2B. The presence of myriad bacteria causes basophilic areas (arrows) within the totally necrotic tumor. Gram-positive cocci are visible in the inset. 2A. Gram stain x50, inset x600.



**Fig. 3.** 3A. Arrow denotes bacterial colony and necrotic debris in cleft between sclera and patch graft overlying necrotic melanoma. 3B. Large colony of Gram positive cocci in cleft shows no associated acute inflammation. 3A. Gram stain x10, 3B. Gram stain x150.

#### Authorship.

#### Acknowledgments and disclosures

No conflicting relationships exist for either author.

#### References

- Maeda H. Carcinogenesis via microbial infection. *Cancer Chemotherapy*. 1998;25(10):1474–1485.
- de Martel C, Ferlay J, Franceschi S, Vignat J, Bray F, Forman D, et al. Global burden of cancers attributable to infections in 2008: a review and synthetic analysis. *Lancet Oncol*, 13(6), 607–615..
- Sepich-Poore GD, Zitvogel L, Straussman R, Hasty J, Wargo JA, Knight R. The microbiome and human cancer. *Science*. 2021;371(6536):eabc4552. <https://doi.org/10.1126/science.abc4552>.
- Sepich-Poore GD, Carter H, Knight R. Intratumoral bacteria generate a new class of therapeutically relevant tumor antigens in melanoma. *Cancer Cell*. 2021;39(5):601–603.
- Sullivan RJ, Fisher DE. Understanding the biology of melanoma and therapeutic implications. *Hematol Oncol Clin N Am*. 2014;28(3):437–453.
- McCoy KD, Mager LF. Impact of the microbiome on tumor immunity. *Curr Opin Immunol*. 2021;69:39–46.
- Wong-Rolle A, Wei HK, Zhao C, Jin C. Unexpected guests in the tumor microenvironment: microbiome in cancer. *Protein Cell*. 2021;12(5):426–435. <https://doi.org/10.1007/s13238-020-00813-8>.
- Walker SP, Tangney M, Claesson MJ. Sequence-Based characterization of intratumoral bacteria-A guide to best practice. *Front Oncol*. 2020;10:179.
- Helmink BA, Khan MAW, Hermann A, Gopalakrishnan V, Wargo JA. The microbiome, cancer, and cancer therapy. *Nat Med*. 2019;25(3):377–388. <https://doi.org/10.1038/s41591-019-0377-7>.
- Duong MT, Qin Y, You SH, Min JJ. Bacteria-cancer interactions: bacteria-based cancer therapy. *Exp Mol Med*. 2019;51(12):1–15.
- Nejman D, Livyatan I, Fuks G, et al. The human tumor microbiome is composed of tumor type-specific intracellular bacteria. *Science*. 2020;368(6494):973–980.
- Chang M, Dalvin LA, Mazloumi M, et al. Prophylactic intravitreal bevacizumab after plaque radiotherapy for uveal melanoma: analysis of visual acuity, tumor response, and radiation complications in 1131 eyes based on patient age. *Asia Pac J Ophthalmol*. 2020;9(1):29–38.
- Shields CL, Dalvin LA, Chang M, et al. Visual outcome at 4 Years following plaque radiotherapy and prophylactic intravitreal bevacizumab (every 4 Months for 2 Years) for uveal melanoma: comparison with nonrandomized historical control individuals. *JAMA Ophthalmol*. 2020;138(2):136–146.
- Sahoo NK, Ranjan R, Tyagi M, Agrawal H, Reddy S. Radiation retinopathy: detection and management strategies. *Clin Ophthalmol*. 2021;15:3797–3809.
- Groenewald C, Konstantinidis L, Damato B. Effects of radiotherapy on uveal melanomas and adjacent tissues. *Eye*. 2013;27(2):163–171.
- Kaliki S, Shields CL, Rojanaporn D, et al. Scleral necrosis after plaque radiotherapy of uveal melanoma: a case-control study. *Ophthalmology*. 2013;120(5):1004–1011.
- Hill JR, Corrêa ZM. Progressive scleral necrosis following I-125 plaque radiotherapy for ciliochoroidal melanoma with protruding extraocular mass. *Ocul Oncol Pathol*. 2016;2(3):136–139.
- Corrêa ZM, Augsburger JJ, Freire J, Eagle Jr RC. Early-onset scleral necrosis after iodine I 125 plaque radiotherapy for ciliochoroidal melanoma. *Arch Ophthalmol*. 1999;117(2):259–261.
- Spitzer, et al. Systemic immunity is required for effective cancer immunotherapy. *Cell*. 2017. <https://doi.org/10.1016/j.cell.2016.12.022>.
- Kalaora S, Nagler A, Nejman D, et al. Identification of bacteria-derived HLA-bound peptides in melanoma. *Nature*. 2021;592(7852):138–143.
- Ansieau S, Collin G, Hill L. EMT or EMT-promoting transcription factors, where to focus the light? *Front Oncol*. 2014;4:353.
- Tanaka Y, Ito S, Isobe K. Vancomycin-sensitive bacteria trigger development of colitis-associated colon cancer by attracting neutrophils. *Sci Rep*. 2016 Apr 6;6, 23920. <https://doi.org/10.1038/srep23920>. PMID: 27050089; PMCID: PMC4822119.
- Mager DL. Bacteria and cancer: cause, coincidence or cure? A review. *J Transl Med*. 2006;4:14.
- Ganai S, Arenas RB, Sauer JP, Bentley B, Forbes NS. In tumors Salmonella migrate away from vasculature toward the transition zone and induce apoptosis. *Cancer Gene Ther*. 2011;18(7):457–466.

25. Zheng JH, Nguyen VH, Jiang SN, et al. Two-step enhanced cancer immunotherapy with engineered *Salmonella typhimurium* secreting heterologous flagellin. *Sci Transl Med*. 2017;9(376), eaak9537.
26. Flickinger Jr JC, Rodeck U, Snook AE. *Listeria monocytogenes* as a vector for cancer immunotherapy: current understanding and progress. *Vaccines (Basel)*. 2018;6(3):48.
27. Staedtke V, Roberts NJ, Bai RY, Zhou S. *Clostridium novyi*-NT in cancer therapy. *Genes Dis*. 2016;3(2):144–152.