

1-1-2018

Advances in the diagnosis, immunopathogenesis and therapies of IgM-anti-MAG antibody-mediated neuropathies.

Marinos Dalakas

Neuromuscular Division, Department of Neurology, Thomas Jefferson University, 901 Walnut Street, Philadelphia, PA, United States; Neuroimmunology Unit, Department of Pathophysiology, National and Kapodistrian University of Athens Medical School, Athens, Greece

Follow this and additional works at: <https://jdc.jefferson.edu/neurologyfp>

 Part of the [Neurology Commons](#)

[Let us know how access to this document benefits you](#)

Recommended Citation

Dalakas, Marinos, "Advances in the diagnosis, immunopathogenesis and therapies of IgM-anti-MAG antibody-mediated neuropathies." (2018). *Department of Neurology Faculty Papers*. Paper 150.
<https://jdc.jefferson.edu/neurologyfp/150>

This Article is brought to you for free and open access by the Jefferson Digital Commons. The Jefferson Digital Commons is a service of Thomas Jefferson University's [Center for Teaching and Learning \(CTL\)](#). The Commons is a showcase for Jefferson books and journals, peer-reviewed scholarly publications, unique historical collections from the University archives, and teaching tools. The Jefferson Digital Commons allows researchers and interested readers anywhere in the world to learn about and keep up to date with Jefferson scholarship. This article has been accepted for inclusion in Department of Neurology Faculty Papers by an authorized administrator of the Jefferson Digital Commons. For more information, please contact: JeffersonDigitalCommons@jefferson.edu.

Advances in the diagnosis, immunopathogenesis and therapies of IgM-anti-MAG antibody-mediated neuropathies

Marinos C. Dalakas

Abstract: Polyneuropathy with immunoglobulin M (IgM) monoclonal gammopathy is the most common paraproteinemic neuropathy, comprising a clinicopathologically and immunologically distinct entity. The clinical spectrum spans from distal paresthesias and mild gait imbalance to more severe sensory ataxia, with falls and a varying degree of distal sensorimotor deficits. In approximately 75% of patients, the monoclonal IgM immunoreacts with myelin-associated glycoprotein (MAG) and sulfoglucuronyl glycosphingolipid (SGPG), or other peripheral nerve glycolipids that serve as antigens. These antibodies are considered pathogenic because IgM and complement are deposited on the myelin sheath, splitting the myelin lamellae, while adoptive transfer of patients' IgM into susceptible host animals causes sensory ataxia and reproduces the human pathology. In spite of the apparently convincing pathogenicity of these antibodies, the response to immunotherapies remains suboptimal. Clorambucil, cladibrine, cyclophosphamide and intravenous immunoglobulin may help some patients but the benefits are minimal and transient. Open-label studies in >200 patients indicate that rituximab is helpful in 30–50% of these patients, even with long-term benefits, probably by suppressing IgM anti-MAG antibodies or inducing immunoregulatory T cells. Two controlled studies with rituximab did not however meet the primary endpoint, mostly because of the poor sensitivity of the scales used; they did however show statistical improvement in secondary endpoints and improved clinical functions in several patients. This review provides an overview of the clinical phenotypes and immunoreactivity of IgM to glycolipids or glycoproteins of peripheral nerve myelin, summarizes the progress on treatment with rituximab as a promising therapy, discusses the pitfalls of scales used, identifies possible biomarkers of response to therapy and highlights the promising new anti-B cell or target-specific immunotherapies.

Keywords: polyneuropathy; anti-MAG antibodies; autoimmune neuropathies; neuropathy with monoclonal gammopathy; rituximab; anti-B cell therapies

Received: 11 September 2017; revised manuscript accepted: 16 November 2017

Introduction

Benign monoclonal gammopathies, often called 'monoclonal gammopathies of undetermined significance' (MGUS), occur in up to 1% of normal people over the age of 50, with age-increasing incidence up to 1.7% above the age of 70 and 6% above 90.¹ Monoclonal gammopathies are however 10 times more frequent in patients with polyneuropathy than age-matched controls, and 10% of adults with acquired polyneuropathy have a monoclonal gammopathy.^{2,3} If the gammopathies

are categorized into immunoglobulin G (IgG), IgA and IgM subclasses, the incidence of polyneuropathy among patients with IgM monoclonal gammopathy can be as high as 50%, implying that 50% of patients with IgM MGUS may have or develop polyneuropathy.^{3,4} The association is not therefore fortuitous; it is also of importance to neurologists because paraproteinemic polyneuropathies comprise a potentially treatable group of autoimmune neuropathies, as proposed >35 years ago.⁵

Ther Adv Neurol Disord

2018, Vol. 11: 1–12

DOI: 10.1177/
1756285617746640

© The Author(s), 2018.
Reprints and permissions:
[http://www.sagepub.co.uk/
journalsPermissions.nav](http://www.sagepub.co.uk/journalsPermissions.nav)

Correspondence to:
Marinos C. Dalakas
Neuromuscular Division,
Department of Neurology,
Thomas Jefferson
University, 901 Walnut
Street, Philadelphia, PA
19107, USA
[marinos.dalakas@
jefferson.edu](mailto:marinos.dalakas@jefferson.edu)
mdalakas@med.uoa.gr

Marinos C. Dalakas
Neuroimmunology
Unit, Department
of Pathophysiology,
National and Kapodistrian
University of Athens
Medical School, Athens,
Greece



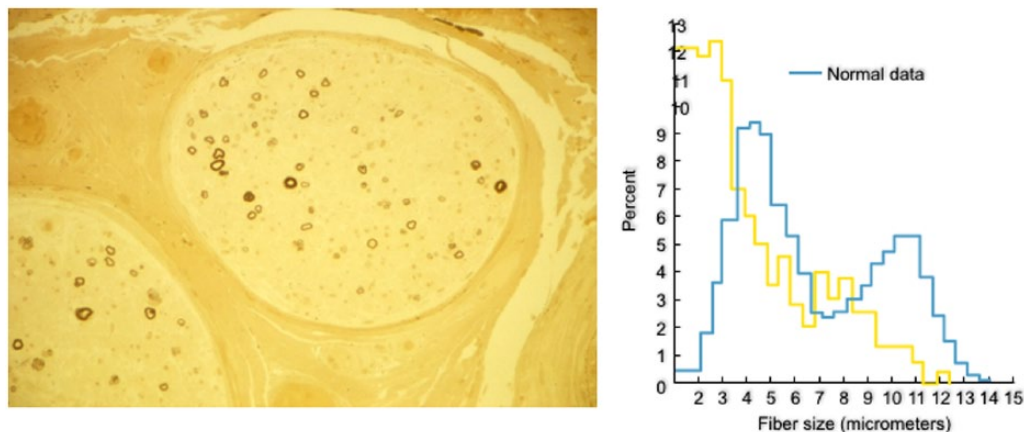


Figure 1. Cross-section of a sural nerve biopsy from a patient with immunoglobulin M antimyelin-associated glycoprotein antibody demyelinating polyneuropathy. The biopsy specimen is stained with toluidine blue and shows selective loss of large-size myelinated fibers (left); histogram (right) depicting the fiber-size distribution of the patient's nerve (yellow), overlapped with the fiber-size distribution (blue) from normal data, clearly demonstrating the selective loss of large-size fibers.

Although paraproteinemic polyneuropathies can be seen in a setting of lymphoid malignancy such as myeloma, plasmacytoma, or Waldenström's macroglobulinemia, most neuropathies recognized first by neurologists occur in connection with MGUS. The term MGUS was coined by hematologists to denote that the gammopathy is 'of no significance' when there is no hematological disease; in a patient with neuropathy however, MGUS is 'of significance' because, even if benign, the gammopathy may point to an immune association possibly amenable to immunotherapy.^{5,6}

The patients who have a demyelinating polyneuropathy associated with IgG or IgA-MGUS behave like chronic inflammatory demyelinating polyneuropathy (CIDP) and the paraprotein is likely coincidental; in contrast, patients with polyneuropathy and IgM MGUS have distinct clinicopathologic and immunobiologic phenotypes. This review describes the clinical spectrum and highlights the progress in the immunopathogenesis and treatment of IgM-MGUS neuropathy, the most common paraproteinemic neuropathy.

Clinical spectrum

Patients with IgM-MGUS typically manifest symptoms associated with dysfunction or loss of large myelinated fibers, most often presented with slowly progressive distal paresthesias, prominent in the feet, and impaired balance. The disease progresses very slowly, leading to impaired proprioception, sensory ataxia, unsteady gait, and a varying degree of distal muscle weakness, first seen in toe and foot extensors.⁴⁻⁶ A good number

of patients have an action tremor prominent in the hands that is unrelated to impaired proprioception.^{7,8} The clinical spectrum varies substantially; some patients have only distal paresthesias and minimal gait imbalance that may not sufficiently affect daily activities or cause disability that could be captured with disability scales, as discussed;⁹ others manifest sensory ataxia and impaired gait; and still others have a combination of sensorimotor deficits with slowly progressive proximal and distal weakness that along with sensory ataxia, cause significant disability.^{6,9,10} Some patients may have subacute onset and faster disease course resembling CIDP with mixed features of demyelination and axonal loss.¹¹ Immunofixation electrophoresis reveals an IgM monoclonal spike that remains present throughout the course, although at times becomes faint or temporarily undetectable; the total IgM may be normal, but is usually elevated three-to-five times above normal. The Cerebrospinal fluid (CSF) protein is often elevated. The IgM spike is also detected in the CSF and exhibits the same electrophoretic mobility as in the serum, in spite of the high-molecular weight of IgM, probably gaining access *via* the dorsal root ganglia that lack blood-CSF barrier or from a disrupted root-CSF barrier.¹² Nerve-conduction studies demonstrate a uniformly slow conduction velocity with a rather characteristic prolonged distal motor and sensory latencies, indicative of distal demyelination.^{13,14} Sural nerve biopsy shows diminished numbers of myelinated axons with selective loss of large myelinating fibers, consistent with the clinical picture of impaired proprioception (Figure 1). Electron microscopy demonstrates a rather unique

splitting of the outer myelin lamellae, probably linked to the presence of IgM deposits in the same area of the split myelin sheaths.¹⁵

Clinical evaluation

The first goal is to ensure that the gammopathy is MGUS and not a sign of an underlying plasma cell dyscrasia, such as myeloma, plasmacytoma, or Waldenström's macroglobulinemia. Monoclonal gammopathies are hematologically benign (MGUS) when the patients have: (a) <3 g/dl monoclonal protein in the serum; (b) no signs of renal insufficiency, osteolytic or osteosclerotic lesions in the bone survey, and signs of anemia or hypercalcemia; (c) no suppression of the uninvolved (IgG, IgA) polyclonal (background) Igs; and (d) stable amount of the monoclonal protein in follow-up examinations.^{5,6,16} When ominous signs of malignant plasma cell dyscrasia are detected, such as lytic bone lesions, Bence-Jones proteinuria, or progressively increased amount of monoclonal protein, a bone marrow examination is essential; the presence of >5% plasma cells and 12% lymphoid aggregates suggests malignancy. Because there is a 1% probability per year that MGUS may evolve into plasma cell dyscrasia,¹ yearly follow-up examinations with immunofixation electrophoresis and Ig levels are necessary.¹⁶ Finding a free light chain should raise suspicion of amyloidosis derived from the variable region of the immunoglobulin light chain, mostly λ . Amyloid neuropathy is painful and often accompanied by autonomic symptoms, such as orthostatic hypotension, impotence, impaired gastric motility, or diarrhea. Diagnostically, deposits of amyloid may be found in the nerve and muscle biopsy, skin, abdominal fat or bone marrow.¹⁶

Immunopathogenesis

Antimyelin-associated glycoprotein antibodies

The main breakthrough in this neuropathy was the discovery by Latov and colleagues of IgM immunoreactivity to myelin-associated glycoprotein (MAG), a 100 kDa glycoprotein of the central and peripheral nerve myelin.¹⁷ Sera from approximately 50% of these patients react with MAG or with acidic glycolipids that share antigenic determinants with MAG^{10,16-19} and reside in the carbohydrate component of the MAG molecule, as we have demonstrated by loss of reactivity after deglycosylation of purified MAG¹⁸ (Figure 2A). An important observation was the subsequent finding that the anti-MAG IgM coreacts with an acidic glycolipid

in the ganglioside fraction of the human peripheral nerve, which by ion-exchange chromatography was seen between monosialotetrahexosylganglioside bearing one sialic acid (GM1) and bearing two sialic acids (GD1a) and identified as a SGPG¹⁹ (Figure 2B). In contrast to MAG, which is present in both, the peripheral nervous system (PNS) and the central nervous system (CNS), SGPG is found exclusively in the peripheral nerves. SGPG also recognizes the human natural killer-1 (HNK-1) trisaccharide epitope, present on both MAG and other peripheral nerve glycoconjugates.²⁰

Human anti-MAG antibodies can be detected in the patients' sera with enzyme-linked immunosorbent assay (ELISA) or Western blots by electrophoresing purified MAG, isolated myelin, or whole brain homogenates.^{19,20} Because sera positive for anti-MAG antibodies almost always recognize the SGPG glycolipid, the assay has been performed by certain laboratories using SGPG as antigen instead of human MAG. It is clearly preferable to use MAG instead of SGPG because the IgM antibodies bind to MAG 10–100 times more strongly than to SGPG; consequently, low-affinity anti-MAG antibodies may be missed if SGPG is used as antigen.^{16,19,20} In a large series of patients' samples, the presence of MAG antibodies detected by ELISA was the most preferable assay because it was sensitive and easier than Western blotting.²²

Other antiganglioside antibodies

In some patients with neuropathy clinically identical to IgM-anti-MAG phenotype, the serum may not react with MAG or SGPG, but only with various gangliosides most commonly those containing either a disialosyl moiety (e.g. GD1b, GQ1b, GT1b, the GalNac-GM1b, or Gal-NAc-GD1a) or two gangliosides that share epitopes with GM2, a combination of GM2 and GM1, or GM1 and GD1b.^{21,23-25} Overall, more than half of the IgM paraproteins recognize MAG and SGPG, and 75% of the rest recognize ganglioside antigens, indicating that acidic glycolipids are the most common antigenic epitopes in immune-mediated neuropathies, as depicted in Figure 2C.^{21,23-26}

Causal relationship between antimyelin-associated glycoprotein/sulfoglucuronyl glycosphingolipid antibodies and the neuropathy

Because MAG is present only in small amounts in the peripheral nerves, compared with its

Immunoreactivity of IgM to MAG (A) and SGPG (B)

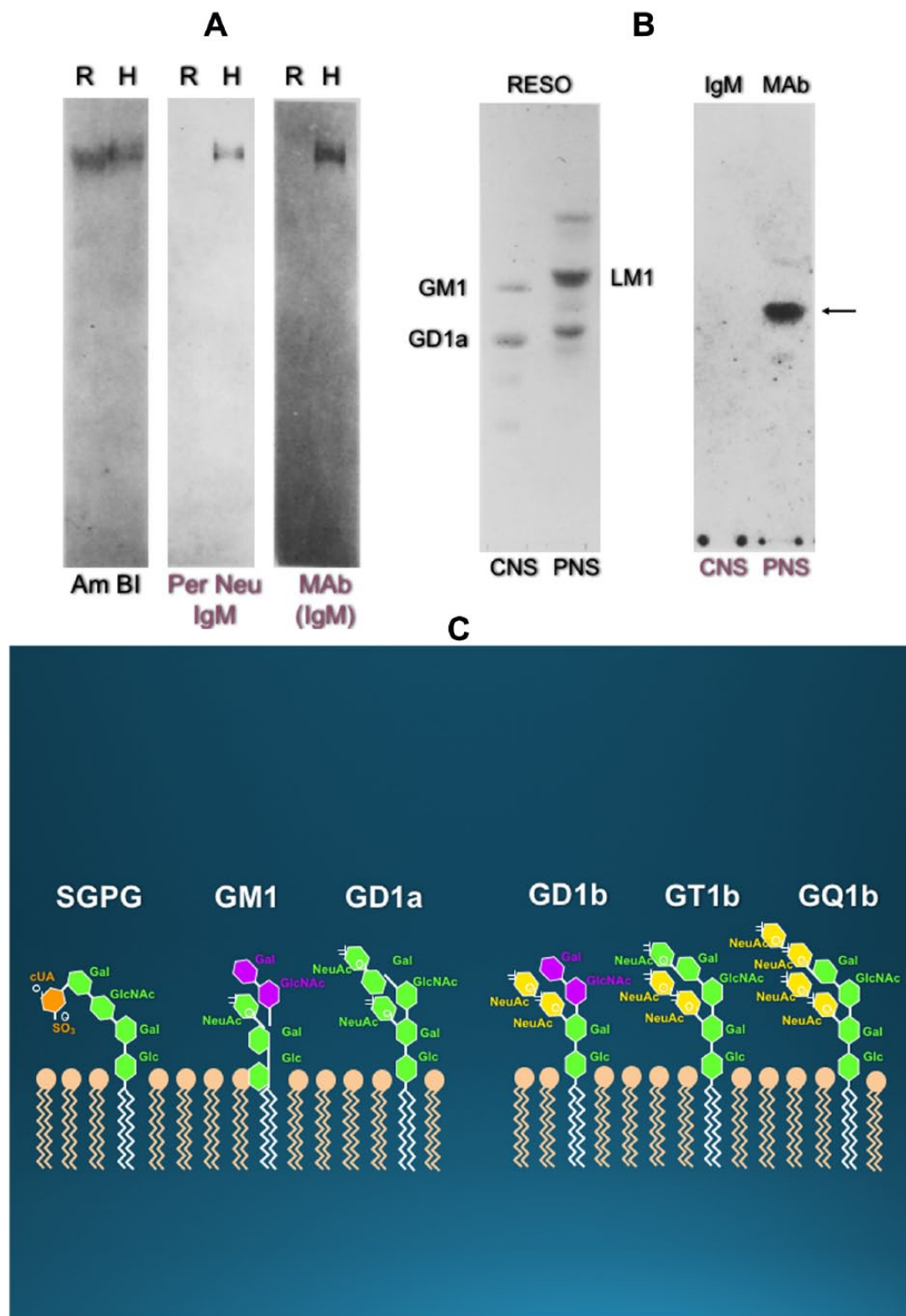


Figure 2. Immunoreactivity of patients' immunoglobulin M to myelin-associated glycoprotein and glycolipids. (A) Immunoblots of sodium dodecyl sulfate gels with purified MAG extracted from rat (R) or human (H), are stained for protein with Am Bl (left) or immunostained with the serum of a patient with IgM MGUS neuropathy (middle lane). The patient's IgM binds only to purified human MAG (middle lane; Per Neu); the reactivity is identical to the band obtained with a commercial MAb to human MAG (right) (from Dalakas¹⁶ and Ilyas et al¹⁹). (B) TLC overlay experiments show that the IgM from an anti-MAG-reacting patient recognizes glycolipid antigens of human peripheral nerve. The panel on the left

Figure 2. (Continued)

shows resorcinol-stained ganglioside fractions isolated from human brain (CNS) or from human peripheral nerve (PNS). The prominent gangliosides are labelled for reference. The panel on the right shows an autoradiograph obtained from overlaying the same TLC plate with the patient's serum followed by radiolabeled antihuman IgM. The major glycolipid antigen recognized by the patients' IgM (arrow) is SGPG found exclusively in the PNS. SGPG is between two minor glycolipid antigens (shown on the left gel) migrating above and below SGPG (from Dalakas¹⁶ and Ilyas *et al.*¹⁹). (C) Common glycolipids and their disialosyl moieties, consisting of NeuAca2-8NeuAc, that serve as antigens in autoimmune neuropathies. The SGPG is most common in anti-MAG-neuropathy; the GM1 in MMN; the GD1a and GT1b with two sialic acid residues, and the GT1b immunoreact with 25% of MAG-reactive patients who have IgM-MGUS and ataxic neuropathy; the GQ1b ganglioside (with two disialosyl moieties) is the most specific target antigen in Miller-Fisher syndrome [from Dalakas and Quarles²¹]. MAG, myelin-associated glycoprotein; Am Bl, amido black; IgM, immunoglobulin M; MGUS, monoclonal gammopathies of undetermined significance; TLC, thin layer chromatography; MAb, monoclonal antibody; RESO, resorcinol; CNS, central nervous system; PNS, peripheral nervous system; SGPG, sulfoglucuronyl glycosphingolipid; GM1, bearing one sialic acid; MMN, Multifocal Motor Neuropathy; GD1a, bearing two sialic acids; GT1b, ganglioside with three sialic acids; GQ1b, ganglioside with four sialic acids.

abundance in the CNS (which is spared in these patients), the immunoreactivity of IgM to MAG was considered by some as a nonpathogenic, binding to antigens with carbohydrate epitopes. The discovery of PNS-specific SGPG glycolipid however, that all anti-MAG-positive patients immunoreact with, has strengthened the view that glycolipids, along with glycoproteins, may be the primary antigenic targets.^{9,10,16,26,27} The following factors provide convincing evidence that these antibodies are causally related to the neuropathy:

(1) Sural nerve biopsies demonstrate deposition of IgM and complement on the myelinated nerve fibers,²⁸ suggesting that activated complement is needed to induce demyelination.

(2) The patients' IgM recognizes neural cell adhesion molecules and co-localizes with MAG on the split myelin lamellae,^{15,16,26,27,29} implying involvement of IgM in myelin disadhesion. This view is strengthened by observations on the patients' skin biopsies which showed deposits of IgM, complement C3d, and MAG on the dermal myelinated fibers associated with reduction of intraneural nerve fiber density.²⁹

(3) The patients' whole serum or purified IgM, when injected with fresh complement into feline peripheral nerves, causes complement-dependent demyelination and conduction block within 2–9 days.³⁰

(4) Systemic administration of anti-MAG IgM paraprotein in chickens, causes segmental peripheral nerve demyelination with deposition of IgM on the outer myelin lamellae and splitting of the myelin sheath in a pattern similar to the one observed in the human neuropathy.³¹

(5) Immunization of cats with purified SGPG causes ataxic neuropathy, clinically resembling the anti-MAG/SGPG sensory ataxic phenotype, with inflammation within the dorsal root ganglionic neurons.³²

Treatment

In patients with IgG or IgA MGUS who have an axonal neuropathy, the paraprotein is probably of unknown significance; if their neuropathy however is demyelinating, it should be treated as CIDP. In these patients, a causal relationship between the IgG or IgA MGUS and the neuropathy has not been established because in contrast to IgM-MGUS, the A and G immunoglobulins do not recognize MAG or other antigens, except rarely when they recognize complex glycolipids, as shown in one of our patients with IgA gammopathy.³³

Since the IgM-anti-MAG antibodies appear to exert a pathogenic effect on the myelin structure and function,^{34,35} it was expected that suppressing their production, removal of the antibodies or modification of the immune network should have a therapeutic effect. Unfortunately, this is not the case in clinical practice because conventional immunotherapies and chemotherapies offer marginal or transient benefit,^{26,27,35–42} necessitating the need for more specific therapies.

When to initiate therapy

The aforementioned clinical spectrum and disease severity should be taken into account in therapeutic decisions. Patients who only have distal paresthesias without gait difficulties that affect daily activities, should be managed with supportive therapy consisting of exercise and balance

training. If, however, manifest gait ataxia, falls and muscle weakness, or present with a CIDP-like picture from the outset, they should be treated early before permanent deficits due to axonal degeneration take place.^{36–42}

Chemotherapeutic agents

Chlorambucil and prednisone, a combination used to treat Waldenström's macroglobulinemia, can improve or stabilize a small number of patients, as we have witnessed in one,⁴³ but the benefit is minimal and does not often outweigh the risks.^{37–42}

Oral cyclophosphamide, in a randomized controlled trial of 35 patients (500 mg for 4 days) in combination with 60 mg prednisolone, every 4 weeks for 6 months, showed some improvements in the Medical Research Council (MRC) sumscores,⁴⁴ but methodological problems with the study design and malignant transformation observed in 10% diminished the impact of the outcome.⁴⁴

Fludarabine, applied to 16 patients in an open-label study, showed transient benefits in some patients^{45,46} and significant adverse effects in 4.

Intravenous immunoglobulin

In three anti-MAG-positive patients we treated with intravenous immunoglobulin (IVIG),⁴⁷ an improvement in motor and sensory functions was observed, prompting us to conduct the first controlled study. Among 11 randomized patients, the neuropathy scores improved in three patients; the overall differences between IVIG and placebo were not however significant.⁴⁸ A small multicenter study conducted in Europe, in spite of some methodological issues, showed modest benefits that were statistically significant only for the secondary outcome measures.^{49,50} In an uncontrolled study in patients with sensory ataxic neuropathy associated with anti-GD1b, but not anti-MAG, antibodies, IVIG showed short-term benefits.⁵¹ Overall, the benefits from IVIG have been minimal.⁵⁰

Rituximab: a promising anti-B-cell therapy for antimyelin-associated glycoprotein neuropathy

Rituximab is a monoclonal antibody against CD20, a B-cell surface antigen present on pre-B cells and throughout the B-cell life cycle, but not on plasma cells.^{52–54} Rituximab causes depletion of circulating B cells, prompting several trials.

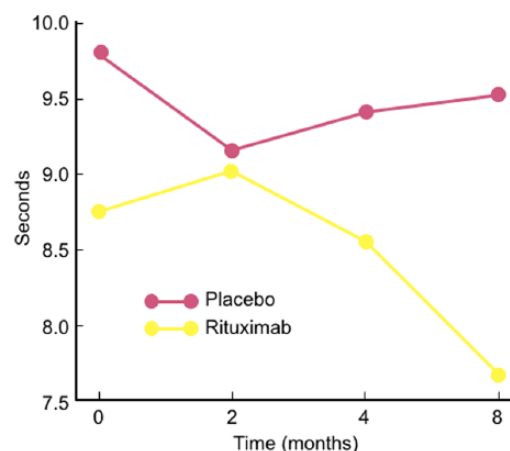


Figure 3. Effect of rituximab in the time to 10 m walk in a double-blind study.⁶⁴

Difference in the 10 m walk time by repeated-measures analysis of variance between the rituximab and placebo groups. A significantly improved gait was seen in the rituximab group (yellow) compared with placebo ($p = 0.042$) (red) in the intention-to-treat analysis.

Uncontrolled studies. First tried in a rather heterogeneous group of 21 patients, rituximab improved most patients 1 year after treatment and reduced IgM autoantibodies.^{55,56} In another, prospective, open-label study, six of nine patients improved after 12 months with improved electrophysiology and reduced anti-MAG antibodies.⁵⁷ Using double the standard dose (750 mg/kg every week for 1 month, instead of 375 mg/kg), the same authors noted improvement in four of eight additional patients.⁵⁸ Cumulative data from approximately 200 patients treated in the last 15 years show that rituximab helped 30–50% of the patients.^{36,59–63} In most, IgM levels decreased by 39% and anti-MAG by 68%.⁶⁰

Controlled studies. In spite of the above promising observations, two controlled studies, using different scales and endpoints, have not convincingly captured this benefit. In the first double-blind placebo-controlled study of 26 patients, 13 were randomized to rituximab and 13 to placebo.⁶⁴ The primary endpoint was a change of >1 in Inflammatory Neuropathy Cause and Treatment (INCAT) leg disability score at month 8. By intention-to-treat (ITT), 4/13 (30%) of rituximab-randomized patients improved by >1 INCAT score, compared with 0/13 placebo-receiving patients ($p = 0.096$). One of the patients randomized to rituximab however, was found to have a normal INCAT score at entry and could not improve; if this patient is excluded, the results become significant

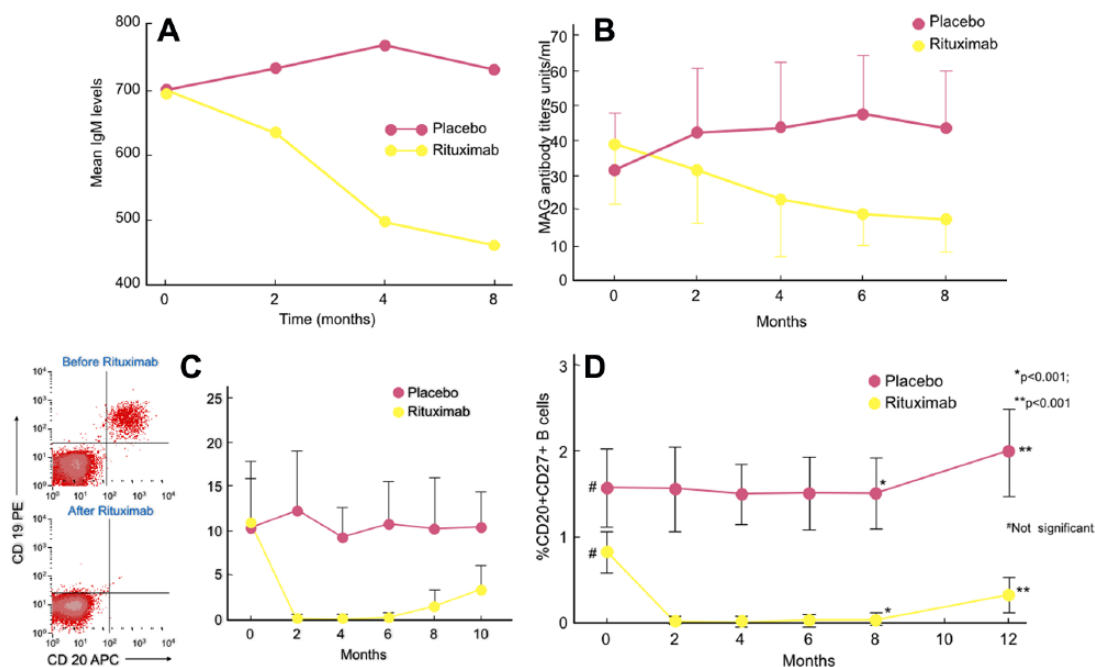


Figure 4. Reduction of B cells, immunoglobulin M, and antimyelin-associated glycoprotein after rituximab in a controlled study.

(A, B) The IgM levels are decreased by 34% (A) and the anti-MAG antibody titers by >50% (B), most prominently at month 8, in rituximab-treated patients compared with placebo; (C, D) Kinetics of depletion and reappearance of CD20+ B cells (C) and the CD20+ CD27+ memory B cells (D) in rituximab-treated patients compared with placebo. B cells are depleted in the periphery by month 2 and start rebounding by month 6; the CD20+ CD27+ memory B cells start reappearing a little later by month 8 (D), often consistent with the need for reinfusion if there are early signs of clinical relapse.⁶⁴

IgM, immunoglobulin M; MAG, myelin-associated glycoprotein; APC, antigen-presenting cell, PE, PRE (pre-B cells).

($p = 0.036$). The time to 10 m walk, a secondary endpoint, was significantly reduced in the rituximab-randomized group by ITT (Figure 3). On clinical grounds, walking and daily activities improved in 7/13 (53.8%) rituximab-treated patients, compared with 0/13 placebo-treated ones, reaching a percentage similar to the one observed in cumulative uncontrolled series, as mentioned earlier. The serum IgM was reduced by 34% and the anti-MAG titers by 50%⁶⁴ (Figure 4A–B). In this series, the most improved patients were those who had high anti-MAG titers and most severe sensory deficits. The main drawback of the study was the scales used; INCAT is a disability motor scale and could not effectively capture small functional changes in sensory function, especially mild gait impairment and sensory ataxia.

Important useful data regarding the immunobiology of B cells and antibody production were observed in clinically-improved patients. Because the signs of clinical response coincided with depletion of B cells and reduction of anti-MAG antibodies (Figure 4A–C), rituximab (that

does not affect plasma cells), has likely depleted the memory B cells, which are the precursors of short-lived plasma cells. Indeed, the memory CD20+ CD27+ B cells were depleted 1 month after rituximab infusion and remained undetectable for 6 months; they started reappearing by month 8 and coincided with the slow rise of IgM serum level (Figure 4A–D). Study of B cell Ig gene usage between the four responders compared with nonresponders, revealed clonal expansions of circulating IgM memory B cells that recognized MAG antigen.⁶⁵ Most importantly, in the nonrituximab responders, the load of IgM memory B cells and the CDR3 clonally expanded sequences were higher and persisted before and after therapy, a finding we interpreted to suggest that low efficiency to reduce B-cell expansions may be associated with poor clinical response.⁶⁵ Accordingly, higher doses of rituximab (as shown in patients who improved with double dosage),⁵⁸ or more potent B-cell-depleting agents that reduce further the clonally related autoreactive B cells may be more effective.³⁶ A significant increase of Foxp3-positive immunoregulatory T cells was also observed at 8

months, suggesting that rituximab affected the immunoregulatory T-cell balance.⁶⁴

A second, much larger controlled study, was conducted in 54 patients, 26 randomized to rituximab and 28 to placebo.⁶⁶ Using sensory scales as primary endpoint at month 12, the authors did not capture any benefit; they did, however, observe a significant response in secondary endpoints based on disability and time-to-walk scales.⁶⁷ The discrepancy between the two well-conducted clinical trials is obviously related to patient selection and scales used, highlighting the inadequacy of sensory INCAT to capture and quantify small, but clinically meaningful, changes related to gait ataxia.

Possible biomarkers of patient subsets responding to rituximab

Obviously, the question is not anymore whether rituximab is helpful or not, but why it benefits <50% of the patients and whether there are biomarkers predicting response.³⁶ Demyelinating pattern, absence of treatment and older age were significant risk factors for disability worsening,⁶² while predominantly motor deficits and subacute progression were associated with positive response.¹¹ Gender, ataxia, tremor and IgM anti-MAG antibody titers were observed to be irrelevant in predicting response;^{11,60,62} in one study, recurrence of disease correlated best with high baseline anti-MAG titers and increasing anti-MAG antibodies at follow up.⁶³

Avidity, and variability in binding of anti-MAG/SGPG antibodies to target antigens, is a factor possibly explaining different therapeutic responses.⁶⁸ Serum levels of BAFF (B-cell activating factor), a key costimulatory molecule for B-cell survival, proliferation and immunoglobulin production,^{52,54} were higher in anti-MAG patients not responding to rituximab;⁶¹ BAFF increased post rituximab in those who responded but, in those who relapsed, BAFF returned to baseline, suggesting that BAFF may be useful in predicting responses and relapses.⁶¹ The finding that therapeutic efficacy depends on reconfiguration of memory B cells through sustained reduction of autoreactive clonal expansions,⁶⁵ could also explain why rituximab is effective in only a patient subset. The need for retreatment to maintain stability in patients with prior response to rituximab may be monitored by the B27-memory B cells that start re-emerging after 8 months⁶⁴ (Figure 4D).

Safety profile

Notwithstanding the benefit of rituximab for certain patient subsets, potential side effects should be considered.^{36,52,54} Rituximab may at times worsen anti-MAG neuropathy,^{69,70} a phenomenon we have also witnessed in three patients; this is probably related to immunomodulatory imbalance and release of proinflammatory cytokines that could possibly change the permeability of the blood-nerve barrier allowing the influx of IgM antibodies within the nerve.^{36,70} This worsening is rare or self-limited and is almost always reversed by IVIG. Rituximab has an excellent safety profile, but infections from common bacteria or viral agents can occur.^{36,52-54} Progressive multifocal leukoencephalopathy has been reported in some patients with B-cell malignancies receiving rituximab plus chemotherapy (R-CHOP, fludarabine).^{36,52,54,71} Vigilance is recommended, especially in patients receiving concomitant immunosuppressants.

The future: new drugs, better scales, and antigen-specific therapies

Anti-B-cell agents

If rituximab helps 30–50% of anti-MAG neuropathy patients, the newer anti-B-cell agents that cause more profound or sustained B-cell depletion, could theoretically be more encouraging.^{36,52,54} B cells not only affect complement activation and antibody production but are strong antigen-presenting cells affecting autoregulation and T-cell activation,^{52,54} which explains the benefit of rituximab to diseases with dominant T-cell receptor gene usage.^{54,72} Ocrelizumab, the humanized version of rituximab that induces more complement activation, is approved for multiple sclerosis and should be considered. Ofatumumab that targets two different epitopes on CD20 causes more significant B-cell depletion; it appears promising in multiple sclerosis (MS) and could be another candidate drug. Obinituzumab, a humanized monoclonal against CD20 approved for chronic lymphocytic leukemia, causes profound B-cell depletion; the drug, recently tried in two anti-MAG neuropathy patients resistant or partially responding to rituximab did not show efficacy, in spite of reducing the IgM levels and anti-MAG titers.⁷³ Belimumab against the B-lymphocyte stimulator BLYS, approved for lupus, may be another alternative, although its failure in MS and myasthenia gravis, lowers its priority status.^{36,54}

Scales

Because the disease exhibits a wide clinical spectrum, future studies should include patients with homogeneous clinical phenotypes and disease duration. Patients with very slowly progressing disease develop secondary axonal changes over time and worsening ataxia, with loss of ganglionic neurons; as a result, these patients are less likely to respond compared with patients having more recent disease and subacute progression.¹¹ Applying functional scales to capture even minor impairments in life activities, gait imbalance and hand tremors is fundamental. For example, in our controlled study,⁶⁴ more patients were able to perform additional daily activities after rituximab compared with placebo, experienced steadier and faster walking, better balance, easier use of utensils, and fewer falls, pain or paresthesias; none of these changes could be however numerically captured with the INCAT disability scales.⁶⁴

Hand tremor

The tremor seen in many anti-MAG patients can be incapacitating. It is a neuropathic tremor, unrelated to impaired proprioception or a coexisting cerebellar disease; it is unresponsive to conventional antiessential tremor drugs but can improve in some patients responding to immunotherapy. Unilateral thalamic deep brain stimulation (DBS) applied in one patient unresponsive to plasma exchange, cyclophosphamide, steroids, primidone, and gabapentin, induced sustained improvement.⁷³ DBS interferes with cerebellar circuits implicated in tremor generation; because in anti-MAG patients the cerebellum may receive disordered sensory input,⁷⁵ DBS needs further study.

Antigen-specific therapy

Anti-MAG antibodies are thought to interfere directly with MAG's involvement in adhesion and signaling processes at the axon–glia interface⁷⁶ resulting in cellular disadhesion. Because MAG has a higher HNK-1 epitope density than other myelin glycoconjugates leading to strong IgM antibody binding, removal of HNK with synthesized glycopolymers may prevent binding of anti-MAG IgM to human MAG.⁷⁶ On this basis, in a mouse model for anti-MAG neuropathy, the glycopolymer PL84(mimHNK-1), designed as an autoantibody scavenger by mimicking the natural HNK-1 glycoepitope, effectively removed the pathogenic anti-MAG

antibodies, offering promising potential for antigen-specific immunotherapy.⁷⁷

Funding

This research received no specific grant from any funding agency in the public, commercial, or not-for-profit sectors.

Conflict of interest statement

The author declares that there is no conflict of interest.

References

1. Kyle RA, Therneau TM, Rajkumar SV, *et al.* Prevalence of monoclonal gammopathy of undetermined significance. *N Engl J Med* 2006; 354: 1362–1369.
2. Kelly JJ, Kyle RA, O'Brien PC, *et al.* The prevalence of monoclonal gammopathy in peripheral neuropathy. *Neurology* 1981; 31: 1480–1483.
3. Kelly JJ. Peripheral neuropathies associated with monoclonal gammopathies of undetermined significance. *Rev Neurol Dis* 2008; 5: 14–22.
4. Latov N, Hays A and Sherman WH. Peripheral neuropathy and anti-MAG antibodies. *Crit Rev Neurobiol* 1988; 3: 301–332.
5. Dalakas MC and Engel WK. Polyneuropathy and monoclonal gammopathy: studies of 11 patients. *Ann Neurol* 1981; 10: 45–52.
6. Dalakas MC. Pathogenesis of autoimmune neuropathies. *Biochim Biophys Acta* 2015; 1852: 658–666.
7. Dalakas MC. Chronic idiopathic ataxic neuropathy. *Ann Neurol* 1986; 19: 545–554.
8. Dalakas MC, Teravinen H and Engel WK. Tremor as a feature of chronic relapsing and dysgammaglobulinemic polyneuropathies: incidence and management. *Arch Neurol* 1984; 41: 711–714.
9. Dalakas MC. Pathogenesis and treatment of anti-MAG neuropathy. *Curr Treat Options Neurol* 2010; 12: 71–83.
10. Latov N and Renaud S. Effector mechanisms in anti-MAG antibody-mediated and other demyelinating neuropathies. *J Neurol Sci* 2004; 220: 127–129.
11. Gazzola S, Delmont E, Franques J, *et al.* Predictive factors of efficacy of rituximab in patients with anti-MAG neuropathy. *J Neurol Sci* 2017; 377: 144–148.

12. Dalakas MC and Papadopoulos NM. Paraproteins in the spinal fluid of patients with paraproteinemic polyneuropathies. *Ann Neurol* 1984; 15: 590–593.
13. Kaku DA, England JD and Sumner AJ. Distal accentuation of conduction slowing in polyneuropathy associated with antibodies to myelin-associated glycoprotein and sulphated glucuronyl paragloboside. *Brain* 1994; 117(Pt 5): 941–947.
14. Lupu VD, Mora CA, Dambrosia J, *et al.* Median terminal Latency Index differentiates anti-MAG/SGPG neuropathy from HMSN1. *Muscle Nerve* 2007; 35: 196–202.
15. Vallat JM, Tabaraud F, Magy L, *et al.* Diagnostic value of nerve biopsy for atypical chronic inflammatory demyelinating polyneuropathy: evaluation of eight cases. *Muscle Nerve* 2003; 27: 478–485.
16. Dalakas MC. Autoimmune peripheral neuropathies. In: Rich RR, Fleisher TA, Shearer WT, *et al.* (eds) *Clinical immunology: principles and practice*. 3rd ed. Oxford: Mosby Elsevier, 2008, pp.977–994.
17. Latov N, Braun PE, Gross RB, *et al.* Plasma cell dyscrasia and peripheral neuropathy: identification of the myelin antigens that react with human paraproteins. *Proc Natl Acad Sci USA* 1981; 78: 7139–7142.
18. Ilyas AA, Quarles RH, McIntosh TD, *et al.* IgM in a human neuropathy related to paraproteinemia binds to a carbohydrate determinant in the myelin associated glycoprotein and to a ganglioside. *Proc Natl Acad Sci USA* 1984; 81: 1225–1229.
19. Ilyas AA, Quarles RH, Dalakas MC, *et al.* Polyneuropathy with monoclonal gammopathy: glycolipids are frequently antigens for IgM paraproteins. *Proc Natl Acad Sci USA* 1985; 82: 6697–6700.
20. Quarles RH. Myelin-associated glycoprotein (MAG): past, present and beyond. *J Neurochem* 2007; 100: 1431–1448.
21. Dalakas MC and Quarles RH. Autoimmune ataxic neuropathies (sensory ganglionopathies): are glycolipids the responsible autoantigens? *Ann Neurol* 1996; 39: 419–422.
22. Kuijf ML, Eurelings M, Tio-Gillen AP, *et al.* Detection of anti-MAG antibodies in polyneuropathy associated with IgM monoclonal gammopathy. *Neurology* 2009; 73: 688–695.
23. Ilyas AA, Li SC, Chou DKH, *et al.* Gangliosides GM2, IV4Gal NaC GM1B, and IV4Gal NaC GD1a as antigens for monoclonal immunoglobulin M neuropathy associated with gammopathy. *J Biol Chem* 1988; 263: 4369–4373.
24. Duane GC, Farrer RG, Dalakas MC, *et al.* Sensory neuropathy associated with monoclonal IgM to GD1b ganglioside. *Ann Neurol* 1992; 31: 683–685.
25. Quarles RH and Dalakas MC. Do antiganglioside antibodies cause human peripheral neuropathies? *J Clin Invest* 1996; 97: 1136–1137.
26. Latov N. Pathogenesis and therapy of neuropathies associated with monoclonal gammopathies. *Ann Neurol* 1995; 37: S32–S42.
27. Steck AJ, Stalder AK and Renaud S. Anti-myelin-associated glycoprotein neuropathy. *Curr Opin Neurol* 2006; 19: 458–463.
28. Monaco S, Bonetti B, Ferrari S, *et al.* Complement dependent demyelination in patients with IgM monoclonal gammopathy and polyneuropathy. *N Engl J Med* 1990; 322: 844–852.
29. Lombardi R, Erne B, Lauria G, *et al.* IgM deposits on skin nerves in anti-myelin-associated glycoprotein neuropathy. *Ann Neurol* 2005; 57: 180–187.
30. Willison HJ, Trapp BD, Bacher JD, *et al.* Demyelination induced by intraneural injection of human antimyelin associated glycoprotein antibodies. *Muscle Nerve* 1988; 11: 1169–1176.
31. Tatum AH. Experimental paraprotein neuropathy, demyelination by passive transfer of human IgM anti-MAG. *Ann Neurol* 1993; 33: 502–506.
32. Ilyas AA, Gu Y, Dalakas MC, *et al.* Induction of experimental ataxic sensory neuronopathy in cats by immunization with purified SGPG. *J Neuroimmunol* 2008; 193: 87–93.
33. Farrer RG, Dalakas MC and Quarles RH. Multiple antibodies to nerve glycoconjugates in an unusual patient with neuropathy and monoclonal IgA gammopathy. *J Neuroimmunol* 1996; 66: 71–76.
34. Vallat JM, Jauberteau MO, Bordessoule D, *et al.* Link between peripheral neuropathy and monoclonal dysglobulinemia: a study of 66 cases. *J Neurol Sci* 1996; 137: 124–130.
35. Vallat JM, Magy L, Ciron J, *et al.* Therapeutic options and management of polyneuropathy associated with anti-MAG antibodies. *Expert Rev Neurother* 2016; 16: 1111–1119.
36. Dalakas MC. Rituximab an anti-MAG neuropathy: more evidence for efficacy and

- more predictive factors. *J Neurol Sci* 2017; 377: 224–226.
37. Magey L, Kabore R, Mathis S, *et al.* Heterogeneity of polyneuropathy associated with anti-MAG antibodies. *J Neuroimmunol Res* 2015; 2015: 450391.
 38. Dalakas MC. Clinical Trials in CIDP and Chronic Autoimmune Demyelinating Polyneuropathies. *J Peripher Nerv Syst* 2012; (suppl 2): 34–39.
 39. Nobile-Orazio E, Meucci N, Baldini L, *et al.* Long-term prognosis of neuropathy associated with anti-MAG IgM M-proteins and its relationship to immune therapies. *Brain* 2000; 123(Pt 4): 710–717.
 40. Leger JM, Guimaraes-Costa R and Muntean C. Immunotherapy in peripheral neuropathies. *Neurotherapeutics* 2016; 13: 96–107.
 41. Lunn MP and Nobile-Orazio E. Immunotherapy for IgM anti-myelin-associated glycoprotein paraprotein-associated peripheral neuropathies. *Cochrane Database Syst Rev* 2016; 10: CD002827.
 42. Steck AJ, Czaplinski A and Renaud S. Inflammatory demyelinating neuropathies and neuropathies with monoclonal gammopathies: treatment update. *Neurotherapeutics* 2008; 5: 528–534.
 43. Dalakas MC, Flaum MA, Rick M, *et al.* Treatment of polyneuropathy in Waldenström's macroglobulinemia: role of paraproteinemia and immunological studies. *Neurology* 1983; 33: 1406–1410.
 44. Niermeijer JM, Eurelings M, van der Linden MW, *et al.* Intermittent cyclophosphamide with prednisone versus placebo for polyneuropathy with IgM monoclonal gammopathy. *Neurology* 2007; 69: 50–59.
 45. Wilson HC, Lunn MP, Schey S, *et al.* Successful treatment of IgM paraproteinaemic neuropathy with fludarabine. *J Neurol Neurosurg Psychiatry* 1999; 66: 575–580.
 46. Niermeijer JM, Eurelings M, Lokhorst H, *et al.* Neurologic and hematologic response to fludarabine treatment in IgM MGUS polyneuropathy. *Neurology* 2006; 67: 2076–2079.
 47. Cook D, Dalakas M, Galdi A, *et al.* High-dose intravenous immunoglobulin in the treatment of demyelinating neuropathy associated with monoclonal gammopathy. *Neurology* 1990; 40: 212–214.
 48. Dalakas MC, Quarles RH, Farrer RG, *et al.* A controlled study of intravenous immunoglobulin in demyelinating neuropathy with IgM gammopathy. *Ann Neurol* 1996; 40: 792–795.
 49. Comi G, Roveri L, Swan A, *et al.* A randomized controlled trial of intravenous immunoglobulin in IgM paraprotein associated demyelinating neuropathy. *J Neurol* 2002; 249: 1370–1377.
 50. Dalakas MC. The use of intravenous immunoglobulin in the treatment of autoimmune neurological disorders: evidence-based indications and safety profile. *Pharmacol Ther* 2004; 102: 177–193.
 51. Attarian S, Boucraut J, Hubert AM, *et al.* Chronic ataxic neuropathies associated with anti-GD1b IgM antibodies: response to IVIg therapy. *J Neurol Neurosurg Psychiatry* 2010; 81: 61–64.
 52. Dalakas MC. B cells as therapeutic targets in autoimmune neurological disorders. *Nat Clin Pract Neurol* 2008; 4: 557–567.
 53. Kosmidis M and Dalakas MC. Rituximab in the treatment of neurological disorders. *Ther Adv Neurol Disord* 2010; 3: 93–105.
 54. Alexopoulos H, Biba A and Dalakas MC. Anti-B-Cell therapies in autoimmune neurological diseases: rationale and efficacy trials. *Neurotherapeutics* 2016; 13: 20–33.
 55. Levine TD and Pestronk A. IgM antibody-related polyneuropathies: B-cell depletion chemotherapy using rituximab. *Neurology* 1999; 52: 1701–1704.
 56. Pestronk A, Florence J, Miller T, *et al.* Treatment of IgM antibody associated polyneuropathies using rituximab. *J Neurol Neurosurg Psychiatry* 2003; 74: 485–489.
 57. Renaud S, Gregor M, Fuhr P, *et al.* Rituximab in the treatment of polyneuropathy associated with anti-MAG antibodies. *Muscle Nerve* 2003; 27: 611–615.
 58. Renaud S, Fuhr P, Gregor M, *et al.* High-dose rituximab and anti-MAG-associated polyneuropathy. *Neurology* 2006; 66: 742–744.
 59. Benedetti L, Briani C, Grandis M, *et al.* Predictors of response to rituximab in patients with neuropathy and anti-myelin associated glycoprotein immunoglobulin. *J Peripher Nerv Syst* 2007; 12: 102–107.
 60. Benedetti L, Briani C, Franciotta D, *et al.* Long term effect of rituximab in anti-MAG polyneuropathy. *Neurology* 2008; 71: 1742–1744.
 61. Benedetti L, Zardini E, Briani C, *et al.* B-cell-activating factor in rituximab-treated patient with anti-MAG polyneuropathy. *J Neurol Neurosurg Psychiatry* 2011; 82: e1291–e1294.

62. Galassi G, Tondelli M, Ariatti A, *et al.* Long-term disability and prognostic factors in polyneuropathy associated with anti-myelin-associated glycoprotein (MAG) antibodies. *Int J Neurosci* 2017; 127: 439–447.
63. Campagnolo M, Zambello R, Nobile-Orazio E, *et al.* IgM MGUS and Waldenstrom-associated anti-MAG neuropathies display similar response to rituximab therapy. *J Neurol Neurosurg Psychiatry*. Epub ahead of print 13 May 2017. DOI: 10.1136/jnnp-2017-315736.
64. Dalakas MC, Rakocevic G, Salajegheh M, *et al.* Placebo-controlled trial of rituximab in IgM anti-myelin associated glycoprotein antibody demyelinating neuropathy. *Ann Neurol* 2009; 65: 286–293.
65. Maurer MA, Rakocevic G, Leung CS, *et al.* Rituximab induces sustained reduction of pathogenic B cells in patients with peripheral nervous system autoimmunity. *J Clin Invest* 2012; 122: 1393–1402.
66. Léger JM, Viala K, Nicolas G, *et al.* Placebo-controlled trial of rituximab in IgM anti-myelin-associated glycoprotein neuropathy. *Neurology* 2013; 80: 2217–2225.
67. Ferfoglia R, Guimaraes-Costa R, Viala K, *et al.* Long-term efficacy of rituximab in IgM anti-myelin-associated glycoprotein neuropathy: RIMAG follow-up study. *J Peripher Nerv Syst* 2016; 21: 10–14.
68. Weiss MD, Dalakas MC, Lauter CJ, *et al.* Variability in the binding of anti-MAG and anti-SGPG antibodies to target antigens in demyelinating neuropathy and IgM paraproteinemia. *J Neuroimmunol* 1999; 95: 174–184.
69. Broglio L and Lauria G. Worsening after rituximab treatment in anti-mag neuropathy [letter]. *Muscle Nerve* 2005; 32: 378–379.
70. Vo ML, Martin P and Latov N. Correlation of changes in Gait parameters, with phenotype, outcome measures, and electrodiagnostic abnormalities in a patient with anti-MAG neuropathy after exacerbation and improvement. *J Clin Neuromuscul Dis* 2015; 17: 22–26.
71. Bonavita S, Conforti R, Russo A, *et al.* Infratentorial progressive multifocal leukoencephalopathy in a patient treated with fludarabine and rituximab. *Neurol Sci* 2008; 29: 37–39.
72. O’Hanlon TP, Dalakas MC, Plotz PH, *et al.* Predominant a/b T cell receptor variable and joining gene expression by muscle-infiltrating lymphocytes in the idiopathic inflammatory myopathies. *J Immunol* 1994; 152: 2569–2576.
73. Rakocevic G, Martinez A, Dalakas MC. Obinutuzumab (GAZYVA), a Potent Anti-B Cell Agent, in the Treatment of Rituximab-Unresponsive IgM Anti-Myelin-Associated-Glycoprotein (MAG)-Mediated-Neuropathy (submitted to the American Academy of Neurology annual meeting April 2018).
74. McMaster J, Gibson G, Castro-Prado F, *et al.* Neurosurgical treatment of tremor in antimyelin-associated glycoprotein neuropathy. *Neurology* 2009; 73: 1707–1708.
75. Weeks RA, Gerloff C, Dalakas MC, *et al.* PET study of visually and non-visually guided finger movements in patients with severe pan-sensory neuropathies and healthy controls. *Exp Brain Res* 1999; 128: 291–302.
76. Burger D, Perruisseau G, Simon M, *et al.* Comparison of the N-linked oligosaccharide structures of the two major human myelin glycoproteins MAG and P0: assessment of the structures bearing the epitope for HNK-1 and human monoclonal immunoglobulin M found in demyelinating neuropathy. *J Neurochem* 1992; 58: 854–861.
77. Herrendorff R, Hänggi P, Pfister H, *et al.* Selective in vivo removal of pathogenic anti-MAG autoantibodies, an antigen-specific treatment option for anti-MAG neuropathy. *Proc Natl Acad Sci USA* 2017; 114: E3689–E3698.