

2-15-2022

A Prospective Cohort Study of the Clinical Predictors of Bacteremia in Under-Five Children With Acute Undifferentiated Fever Attending a Secondary Health Facility in Northwestern Nigeria

Taofik Oluwaseun Ogunkunle

Timothy Olanrewaju Adedoyin

Samuel Kolade Ernest

Fatimah Hassan-Hanga

Abdulazeez Imam

See next page for additional authors

Follow this and additional works at: <https://jdc.jefferson.edu/petfp>



Part of the [Pediatrics Commons](#), and the [Pharmacy and Pharmaceutical Sciences Commons](#)

[Let us know how access to this document benefits you](#)

This Article is brought to you for free and open access by the Jefferson Digital Commons. The Jefferson Digital Commons is a service of Thomas Jefferson University's [Center for Teaching and Learning \(CTL\)](#). The Commons is a showcase for Jefferson books and journals, peer-reviewed scholarly publications, unique historical collections from the University archives, and teaching tools. The Jefferson Digital Commons allows researchers and interested readers anywhere in the world to learn about and keep up to date with Jefferson scholarship. This article has been accepted for inclusion in Department of Pharmacology and Experimental Therapeutics Faculty Papers by an authorized administrator of the Jefferson Digital Commons. For more information, please contact: JeffersonDigitalCommons@jefferson.edu.

Authors

Taofik Oluwaseun Ogunkunle, Timothy Olanrewaju Adedoyin, Samuel Kolade Ernest, Fatimah Hassan-Hanga, Abdulazeez Imam, Rasaq Olaosebikan, and Stephen K Obaro



A Prospective Cohort Study of the Clinical Predictors of Bacteremia in Under-Five Children With Acute Undifferentiated Fever Attending a Secondary Health Facility in Northwestern Nigeria

OPEN ACCESS

Edited by:

Eitan Naaman Berezin,
Santa Casa of São Paulo, Brazil

Reviewed by:

Benjamin Jelle Visser,
Academic Medical
Center, Netherlands
Romain Basmaci,
Assistance Publique Hopitaux de
Paris, France

*Correspondence:

Taofik Oluwaseun Ogunkunle
taopheeqsheun@yahoo.com

† Present address:

Taofik Oluwaseun Ogunkunle,
Department of Paediatrics, Dalhatu
Araf Specialist Hospital, Lafia, Nigeria

Specialty section:

This article was submitted to
General Pediatrics and Pediatric
Emergency Care,
a section of the journal
Frontiers in Pediatrics

Received: 24 June 2021

Accepted: 27 December 2021

Published: 15 February 2022

Citation:

Ogunkunle TO, Adedoyin TO,
Ernest SK, Hassan-Hanga F, Imam A,
Olaosebikan R and Obaro SK (2022) A
Prospective Cohort Study of the
Clinical Predictors of Bacteremia in
Under-Five Children With Acute
Undifferentiated Fever Attending a
Secondary Health Facility in
Northwestern Nigeria.
Front. Pediatr. 9:730082.
doi: 10.3389/fped.2021.730082

Taofik Oluwaseun Ogunkunle^{1†}, Timothy Olanrewaju Adedoyin², Samuel Kolade Ernest², Fatimah Hassan-Hanga³, Abdulazeez Imam⁴, Rasaq Olaosebikan⁵ and Stephen K. Obaro⁶

¹ Department of Paediatrics, University of Ilorin Teaching Hospital, Ilorin, Nigeria, ² Department of Paediatrics and Child Health, University of Ilorin/University of Ilorin Teaching Hospital, Ilorin, Nigeria, ³ Department of Paediatrics and Child Health, Aminu Kano University Teaching Hospital, Kano, Nigeria, ⁴ Oxford Centre for Global Health Research, Nuffield Department of Medicine, University of Oxford, Oxford, United Kingdom, ⁵ Department of Pharmacology and Experimental Therapeutics, Thomas Jefferson University, Philadelphia, PA, United States, ⁶ Division of Pediatric Infectious Diseases, Department of Pediatrics/Department of Microbiology and Pathology, University of Nebraska Medical Center, Omaha, NE, United States

Background: Children with acute febrile illness with no localizing signs often receive antibiotics empirically in most resource-poor settings. However, little is known about the burden of bacteremia in this category of patients, and an appraisal is thus warranted. This will guide clinical practice and promote rational antibiotics use.

Methods: We prospectively followed up 140 under-five children who presented with acute undifferentiated fever at the emergency/outpatient pediatric unit of a secondary healthcare facility. Baseline clinical and laboratory information was obtained and documented in a structured questionnaire. We compared baseline characteristics between participants with bacteremia and those without bacteremia. We further fitted a multivariable logistic regression model to identify factors predictive of bacteremia among the cohort.

Result: The prevalence of bacteremia was 17.1%, and *Salmonella* Typhi was the most frequently (40.9%) isolated pathogen. The majority (78.6%) of the study participants were managed as outpatients. The participants who required admission were four times more likely to have bacteremia when compared to those managed as outpatients (AOR 4.08, 95% CI 1.19 to 14.00). There is a four times likelihood of bacteremia (AOR 4.75, 95% CI 1.48 to 15.29) with a fever duration of beyond 7 days. Similarly, participants who were admitted with lethargy were six times more likely to have bacteremia (AOR 6.20, 95% CI 1.15 to 33.44). Other significant predictors were tachypnea and lymphopenia.

Conclusion: Among under-five children with acute undifferentiated fever, longer duration of fever, lethargy, inpatient care, tachypnea, and lymphopenia were the significant predictors of bacteremia.

Keywords: bacteraemia, acute undifferentiated fever, lymphopenia, *Salmonella*, lethargy, under-five children

INTRODUCTION

An acute undifferentiated febrile illness is characterized by a fever of fewer than 2 weeks for which no localizing signs or etiology is found after a full history and physical examination (1, 2). It may be the only symptom of a mild self-limiting illness or antecedent of a serious infection caused by a bacterial pathogen (3, 4). Most cases of acute undifferentiated fever (AUF) are caused by viruses in South and Southeast Asia while malaria parasitemia has frequently been identified in parts of sub-Saharan Africa (5–7).

In most resource-poor settings, polymicrobial infection with viruses, bacteria, and malaria is common and could be clinically indistinguishable (8–10). Although malaria could be rapidly diagnosed in most of these settings, clinicians in these settings are often challenged by the limited access to bacterial culture facilities to aid in accurate diagnosis of bacteremia (11). Also, white blood cell parameters which are available are inadequate to differentiate between malarial, viral, and bacterial pathogens. Hence, children with acute fever are often presumptively prescribed antibiotics, and this could increase the risk of antibiotic resistance (12, 13).

Unlike those with AUF, children with demonstrable focus of infection such as pneumonia and meningitis are rationally prescribed antibiotics according to existing guidelines (14, 15). However, there is currently a dearth of information on the accurate burden of bacteremia and its clinical predictors among children with AUF in most resource-poor settings, especially in sub-Saharan Africa, and this could jeopardize the rational deployment of antibiotics. The Pediatric Early Warning Score (PEWS) and the pediatric quick Sequential Organ Failure Assessment (qSOFA score) have been used to identify patients at risk of poorer outcomes (16–19). The qSOFA have been mostly used to predict mortality from sepsis rather than identifying subjects who had sepsis and needed prompt initiation of antibiotics. Besides, the sensitivity in predicting mortality and severe sepsis has been reportedly poor in the pediatric population (18, 20). Also, the qSOFA included blood pressure measurement, which is often not done routinely in most resource-poor settings. Similarly, the PEWS was designed to identify hospitalized children with heterogeneous disease conditions at risk for clinical deterioration and may not be applicable to children with AUF. Studies identifying the bacterial etiology of childhood AUF as well as its clinical predictors would thus be crucial, and this is the thrust of the current study. This study was initiated on a platform of ongoing surveillance for bacteremia in young children to identify clinical predictors of bacteremia among under-five children with acute undifferentiated fever.

MATERIALS AND METHODS

Study Design and Setting

A prospective cohort study was conducted at the emergency and pediatric outpatient unit of Murtala Mohammed Specialist Hospital (MMSH), Kano. The Department of Pediatrics of the

Abbreviations: AOR, Adjusted odds ratio; IQR, Interquartile range; AUF, Acute undifferentiated fever; EPU, Emergency pediatric unit; MMSH, Murtala Muhammad Specialist Hospital.

hospital has an outpatient unit, a 30-bed emergency unit and a 50-bed pediatric medical ward. On average, the department conducts about 200–300 pediatric emergency consultations monthly and about 300 outpatient consultations daily. The emergency unit is manned by interns, medical officers, and a consultant and receives pediatric medical emergencies beyond the neonatal age up to the age of 14 years while the outpatient unit is manned by medical officers and a supervising consultant.

Inclusion and Exclusion Criteria

Subjects were previously healthy under-five children aged from 1 to 59 months with acute undifferentiated fever (i.e., with no localizing symptoms and signs). Consequently, subjects with clinical evidence of meningitis, pneumonia, urinary tract infection, or others with a discernable focus of infection were excluded. Also, subjects known to have sickle cell disease (SCD) or those that have taken antibiotics 48 h prior to recruitment were excluded. Children with SCD mostly have routine antibiotics prophylaxis in the study location.

Sample Size Determination

The sample size of the study was 140 study participants. This was determined using the standard formula for sample size in an observational study (21). The calculation for this is shown below:

$$n = \frac{Z^2 pq}{d^2}$$

where n is the desired minimum sample size; z is the standard normal deviation set at 1.96, which corresponds to 95% confidence interval, and p is the prevalence of bacteremia among children with undifferentiated fever, estimated to be 9% from a previous study (6). Also, $q = 1 - p = 1 - 0.09 = 0.91$, while d is the tolerable margin of error, with an observed difference of 5% taken as being significant.

$$\text{Therefore, } n = \frac{1.96^2 \times 0.09 \times 0.91}{0.05^2} = 126.$$

The calculated sample size was 126, and allowing for an attrition rate of 10% (≈ 13), the minimum sample size estimated was approximately 140.

Definitions

1. Acute Undifferentiated Fever: Fever of $\geq 38^\circ\text{C}$ for ≤ 14 Days Without Localized or Organ-Specific Clinical Features. Non-localizing Symptoms Include Myalgia, Clear Rhinorrhea, non-Bloody Diarrhoea, Rash, Arthralgia, Headache, Altered Sensorium, and Jaundice (6, 22, 23).

2. Bacteremia: Isolation of at Least one non-Contaminant Bacteria From the Admission Blood Specimen. Coagulase-Negative *Staphylococcus* Species, *Corynebacterium* Species, α - or γ -Hemolytic *Streptococci*, *Micrococcus* Species, *Bacillus* Species, and *Propionibacterium* Species Were Regarded as Contaminants (24).

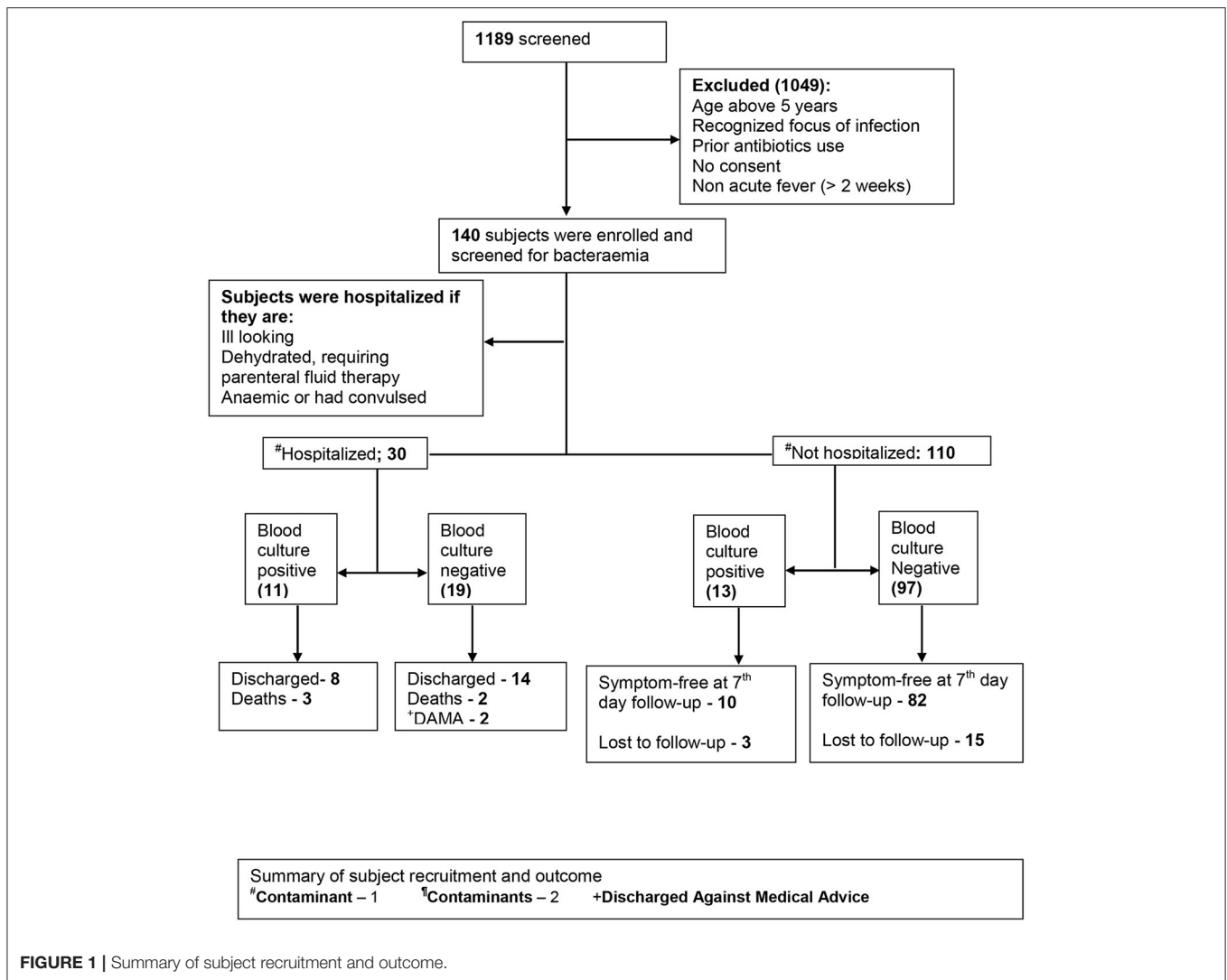


FIGURE 1 | Summary of subject recruitment and outcome.

Data Collection

Not all eligible subjects were enrolled in the study because of insufficient manpower to commit specifically for this study at the enrollment site. Recruitment was conducted during the working hours of weekdays only, excluding public holidays. Subjects fulfilling the preset clinical criteria were recruited during their presentation to the emergency or outpatient unit until the estimated sample size was achieved. This spans a period of 5 months (November 2015 and March 2016). The recruitment was done by a medical officer with at least 2 years of experience of pediatric emergency setting. Clinical history was obtained from the caregivers, and similarly, examination findings were entered in the study pro forma. Each study participant was followed up until outcome: discharge, death, discharge against medical advice, symptom free (outpatient) at 7 days' follow-up, or unknown (outpatients who could not be reached by phone and who did not return for follow-up) (Figure 1).

Complete blood count and bacterial isolation were automated using Swelab and BACTEC™ 9050, respectively. All samples

were sent to the laboratory within an hour of collection for incubation, and the vials were incubated in the automated culture system for a maximum of 5 days. A positive reading indicates the presumptive presence of viable microorganisms in the vial, usually within 48 h. Under aseptic conditions, aliquots were obtained from positive vials. Only aerobic culture bottles were used. Aliquots from positive vials were subjected to Gram stain microscopy and subcultured using enriched sheep blood agar or chocolate agar. Inoculated media was incubated under aerobic and 5% CO₂ conditions at 35°C for 18–24 h (25). Bacteria were identified by a combination of morphology on the growth plate, Gram stain, and standard biochemical tests; *Salmonella* were identified by reaction of the isolate on the Kligler iron agar (KIA)/triple sugar iron agar (TSI); *Streptococcus pneumoniae* were identified by susceptibility to optochin and bile solubility; and the API 20 E system (bioMérieux, France) was used to identify *Klebsiella* and *Proteus* (26, 27).

All ill-looking subjects as assessed by the attending clinician, subjects who convulsed, and those with anemia and dehydration,

requiring parenteral fluid therapy, were hospitalized. Subjects were prescribed empirical antibiotics if they were hospitalized and or had tachycardia and tachypnea; otherwise, they were prescribed antipyretics, and their caregivers were reassured. Lumbar puncture was performed on subjects with a recent history of convulsion or symptoms suggestive of meningeal irritation. Follow-up of all non-hospitalized subjects was performed by telephone contact, and the parents were asked to return with the subjects for further assessment within 48 h. Subjects managed as outpatients whose culture result became positive within 48 h were contacted as soon as possible and commenced on antibiotics.

Exposure Variables

We elicited most of our exposure variables by direct questioning. We derived some other variables; for example, high-grade fever was defined as a temperature $> 40^{\circ}\text{C}$ (28). We also classified participants as having tachypnea based on their respiratory rate using the World Health Organization definitions: >60 breaths per minute for children aged below 2 months, >50 breaths per minute for children aged 2–11 months, and >40 breaths per minute for children aged 12–59 months (29). Tachycardia was also defined based on the standard values for age: >160 beats per minute for infants <1 year, >150 beats per minute for those between 1 and 2 years, and >140 beats per minute for those between 2 and 5 years (30). Other laboratory variables were also defined using standard values. Severe anemia was defined as a packed cell value of $< 18\%$ and thrombocytopenia as a platelet count below $150,000$ cells/ mm^3 (31). Lymphopenia was defined as a lymphocyte count $<3 \times 10^9/\text{L}$, neutropenia as a neutrophil count $<1 \times 10^9/\text{L}$, and leukocytosis as a white cell count $>15 \times 10^9/\text{L}$ (32).

Outcome Variable

This was defined as the occurrence of bacteremia.

Data Analysis

We provided participant summary statistics using the median and interquartile range for non-normally distributed data and frequencies with percentages for categorical data. We compared proportions using chi-square, and when the expected cell count was < 5 , Fisher's exact test was used. We also compared medians using the Man-Whitney *U*-test. Statistical significance was set at $p < 0.05$ for our univariable analysis. Significant predictors ($p < 0.2$) on univariable analyses were placed in a maximal logistic regression model. The least significant predictor (with $p > 0.05$) was dropped using backwards stepwise regression until the final model, which had only significant predictors. The coefficients of the final model were exponentiated to derive adjusted odds ratios (AORs) and their corresponding 95% confidence intervals (CIs). All statistical analyses were performed using STATA version 16.1 (StataCorp, 2019, Stata Statistical Software: Release 16, College Station, StataCorp LP, TX).

RESULTS

Between November 2015 and March 2016, 140 under-five children who presented with acute undifferentiated fever were

recruited into this study. Of this number, we identified 24 (17.1%) with a positive blood culture and identified an organism in 22 (15.7%) of them. *Salmonella* Typhi was the most frequently cultured organism (40.9% of isolates; **Table 1**), and this was followed by non-Typhi *Salmonella* (31.8% of isolates; **Table 1**). Co-trimoxazole had the highest resistance among antibiotics as 77.8% and 85.7% of *Salmonella* Typhi and non-Typhi *Salmonella* were resistant to the antibiotic, respectively (**Table 1**).

Participant Outcomes

Thirty enrollees (22.4%) were hospitalized while 110 (78.6%) were managed as outpatients. Ninety-two (83.7%) outpatients were identified as symptom free after a 7-day follow-up, while 18 (16.4%) were lost to follow-up. Among the inpatients, 22 (73.3%) were discharged, 3 (10.0%) were discharged against medical advice, and 5 (16.7%) died while on admission.

Participant Sociodemographic and Clinical Characteristics

There were more subjects with fever beyond 7 days in the group that had bacteremia (**Figure 2**). The median duration of fever was significantly higher in the bacteremia group (7.0 days) when compared to the group without bacteremia (4 days, $p = 0.005$, **Table 2**). Similarly, bacteremia occurred more frequently among children admitted as inpatients ($p = 0.001$, **Table 2**) and presented clinically with a history of lethargy, poor feeding, diarrhea, and abdominal pain ($p = 0.018$, 0.087 , 0.070 , and 0.078 , respectively, **Table 2**). There was no significant difference in gender, age distribution, or clinical histories of rhinorrhea, vomiting, convulsions, fast breathing, and abdominal distension between the two groups.

Participant Clinical Examination and Laboratory Findings

A significantly higher proportion of participants in the bacteremia group (25.0%) presented with a high-grade fever when compared to those without bacteremia (7.8%, $p = 0.013$, **Table 3**). Similarly, a significantly greater proportion of the bacteremia group presented with tachycardia ($p = 0.015$), tachypnea ($p = 0.01$), and lymphopenia ($p = 0.036$) and had fever for longer than 7 days ($p = 0.011$). The distribution of the white cell count also differed across both groups ($p = 0.018$, **Table 3**). There were no significant group differences in thrombocytopenia, severe anemia, and neutropenia.

Clinical Predictors of Bacteremia

Subjects are four times more likely to have bacteremia when they have fever beyond 7 days (AOR 4.75, 95% CI 1.48 to 15.29, **Table 4**). Participants who were admitted with lethargy were 6.2 times more likely to have bacteremia (AOR 6.20, 95% CI –1.15 to 33.44, **Table 4**). Those admitted as inpatients were also four times more likely to have bacteremia when compared to outpatients (AOR 4.62, 95% CI 1.45 to 14.72, **Table 4**).

DISCUSSION

We investigated the burden and factors predictive of bacteremia among under-five children with acute undifferentiated fever seen

TABLE 1 | Antibiogram showing relative frequencies of organisms grown on culture and their different sensitivity profiles.

Organism type	Frequency (%)	Sensitivity	Co-trim (%)	Aug (%)	Cefo (%)	Genta (%)	Cipro (%)	Ceftri (%)
Salmonella Typhi	9 (40.9)	Resistant	7 (77.8)	1 (11.1)	2 (22.2)	0 (0.0)	1 (11.1)	1 (11.1)
		Sensitive	2 (22.2)	7 (77.8)	6 (66.7)	9 (100.0)	8 (88.9)	8 (88.9)
		Not tested	0 (0.0)	1 (11.1)	1 (11.1)	0 (0.0)	0 (0.0)	0 (0.0)
Non-Typhi Salmonella	7 (31.8)	Resistant	6 (85.7)	2 (28.6)	0 (0.0)	0 (0.0)	0 (0.0)	0 (0.0)
		Sensitive	1 (14.2)	4 (57.1)	6 (66.7)	7 (100.0)	7 (100.0)	7 (100.0)
		Not tested	0 (0.0)	1 (14.3)	1 (11.1)	0 (0.0)	0 (0.0)	0 (0.0)
Streptococcus pneumoniae	2 (9.0)	Resistant	1 (50.0)	0 (0.0)	0 (0.0)	1 (50.0)	0 (0.0)	0 (0.0)
		Sensitive	1 (50.0)	2 (100.0)	1 (50.0)	1 (50.0)	1 (50.0)	1 (50.0)
		Not tested	0 (0.0)	0 (0.0)	1 (50.0)	0 (0.0)	1 (50.0)	1 (50.0)
Salmonella species	1 (4.6)	Resistant	0 (0.0)	1 (100.0)	0 (0.0)	0 (0.0)	1 (100.0)	0 (0.0)
		Sensitive	1 (100.0)	0 (0.0)	1 (100.0)	1 (100.0)	0 (0.0)	1 (100.0)
		Not tested	0 (0.0)	0 (0.0)	0 (0.0)	0 (0.0)	0 (0.0)	0 (0.0)
Klebsiella specie	1 (4.6)	Resistant	0 (0.0)	0 (0.0)	0 (0.0)	0 (0.0)	0 (0.0)	0 (0.0)
		Sensitive	1 (100.0)	1 (100.0)	1 (100.0)	1 (100.0)	1 (100.0)	1 (100.0)
		Not tested	0 (0.0)	0 (0.0)	0 (0.0)	0 (0.0)	0 (0.0)	0 (0.0)
Proteus mirabilis	1 (4.6)	Resistant	1 (100.0)	0 (0.0)	0 (0.0)	0 (0.0)	0 (0.0)	0 (0.0)
		Sensitive	0 (0.0)	1 (100.0)	1 (100.0)	1 (100.0)	1 (100.0)	1 (100.0)
		Not tested	0 (0.0)	0 (0.0)	0 (0.0)	0 (0.0)	0 (0.0)	0 (0.0)
Stenotrophomonas maltophilia	1 (4.6)	Resistant	0 (0.0)	0 (0.0)	0 (0.0)	0 (0.0)	0 (0.0)	0 (0.0)
		Sensitive	1 (100.0)	1 (100.0)	0 (0.0)	1 (100.0)	1 (100.0)	1 (100.0)
		Not tested	0 (0.0)	0 (0.0)	1 (100.0)	0 (0.0)	0 (0.0)	0 (0.0)
Total	22 (100.0)	Resistant	15 (68.2)	4 (18.2)	2 (9.1)	1 (4.6)	2 (9.1)	1 (4.5)
		Sensitive	7 (31.8)	16 (72.3)	16 (72.3)	21 (95.5)	19 (86.4)	20 (91.0)
		Not tested	0 (0.0)	2 (9.1)	4 (18.2)	0 (0.0)	1 (4.5)	1 (4.5)

Yellow, Gram-negative organism; Blue, Gram-positive organism; Red, Resistance of organism in >70% of species; Brown, Resistance of organism between 50 and 70% of species. Cotrim, Co-trimoxazole; Aug, Amoxicillin-clavulanate; Cefo, Cefotaxime; Genta, Gentamicin; Cipro, Ciprofloxacin; Ceftri, Ceftriaxone.

at the emergency unit in northwestern Nigeria. We found that one in six participants had bacteremia, majority from Gram-negative enteric pathogens. Inpatient care, longer duration of fever, lethargy, tachypnea, and lymphopenia were all associated with the increased odds of bacteremia.

The prevalence of bacteremia among under-five children with acute undifferentiated fever was 17.1%. This is similar to the rate reported among children with similar characteristics in Benin, Nigeria (5). However, a higher prevalence rate (25.7%) was reported among Indian children (33). The diagnosis of bacteremia in the current study was based only on blood culture as opposed to the Indian study where the Widal test, a serologic test fraught with high false-positive rates, complemented blood culture in the diagnosis of *Salmonella* infection; this may have overestimated the burden of bacteremia (34). In contrast, the prevalence of bacteremia was significantly lower (1.4%) in a previous study conducted in Brazil with a similar study population to ours (35). The higher positive culture rate found in our study could be because of the utilization of a more sensitive automated culturing system, unlike the Brazilian study where the conventional manual bacteriological culture method was used.

Gram-negative pathogens were the predominant cause of bacteremia among our cohort, accounting for over 80% of the isolates. The preponderance of Gram-negative pathogens in childhood bacteremia had been described previously in Northern

Nigeria and in other low- and middle-income countries (5, 7, 33, 36). The preponderance of enteric Gram-negative pathogens in the study location, like in most resource-poor settings, could be related to the high presence of predisposing factors such as high level of poverty, limited access to clean water, poor sanitation, and malnutrition (37). In contrast, some studies have reported predominantly Gram-positive pathogens, especially *Staphylococcus aureus* among febrile children (38–40). While this difference might reflect geographical variations of bloodstream bacterial pathogens, the characteristics of the study participants and the study design could also account for the differences in the organisms isolated. The current study is prospective; hence, it has very minimal selection bias, unlike the previous studies, which were retrospective in design. Also, our subjects are those with acute undifferentiated febrile illnesses and are also devoid of peculiar risk factors such as HIV infection that could predispose to *Staphylococcus aureus* infection (41).

Salmonella infection accounted for most of the cases, consistent with the previous reports from the same study location (27, 36). Bacteremia caused by *Salmonella* is most prevalent in the dry season (October–March), and the conduct of the present study during this peak period may have accounted for the predominance of the organism (36). Meningococcal bacteremia was not found in the current study despite the timing of the study, which coincided with the seasonal peak of *Neisseria*

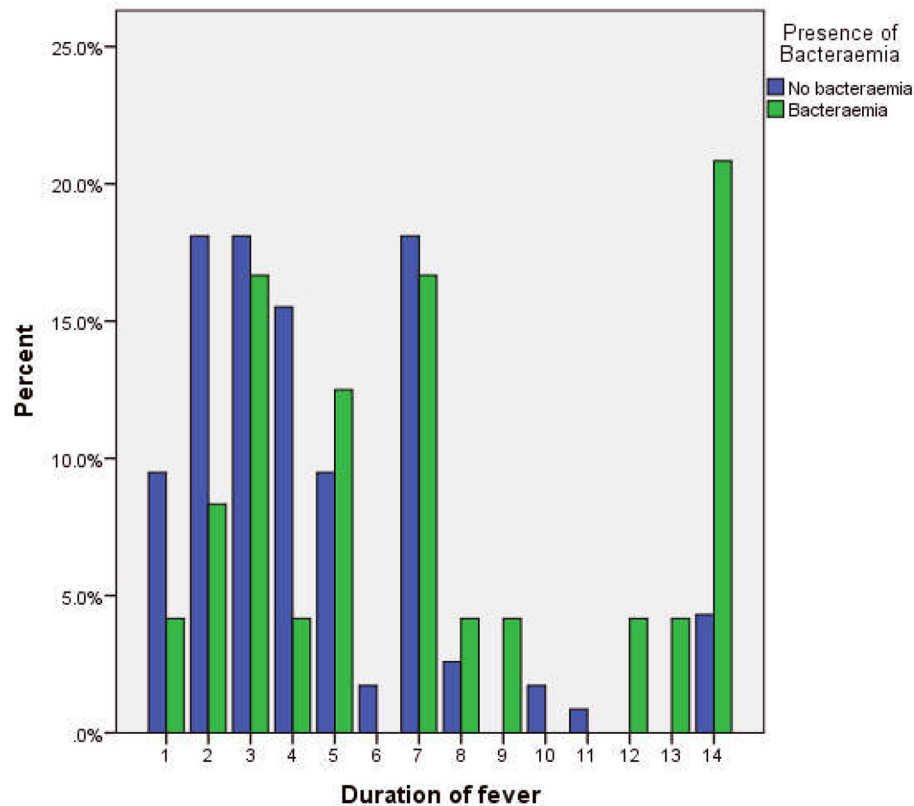


FIGURE 2 | Cluster bar chart showing the relationship between the duration of fever and the occurrence of bacteraemia.

meningitides. This observation may, however, not reflect the burden of meningococcal bacteremia in the study location because subjects with overt clinical features of meningitis such as neck stiffness and abnormal tone were excluded from the current study.

In vitro antibiotic susceptibility testing revealed a high prevalence of co-trimoxazole resistance, especially by *Salmonella* infection, but with high sensitivity to gentamicin, ciprofloxacin, ceftriaxone, and amoxicillin-clavulanate. A previous multicenter study in Northern Nigeria has also shown high resistance of nontyphoidal *Salmonella* and *Salmonella* Typhi to co-trimoxazole (36). This finding has some implications; first, amoxicillin-clavulanate would seem a rational antibiotic on an outpatient basis, but it is quite expensive compared to co-trimoxazole. Second, ciprofloxacin is cheap and available in both oral and parenteral forms and could be used in both inpatient and outpatient settings, but the widespread use of ciprofloxacin has been associated with a high incidence of extended-spectrum β -lactamase enzyme-producing pathogen, hence increasing antibiotic resistance (42). Third, like ciprofloxacin, ceftriaxone is a broad-spectrum antibiotics, and its use as a first-line drug could also promote resistance. Also, it is expensive and available only in a parenteral formulation and would be less affordable in resource-poor settings where the majority have no form of health insurance.

In this study, the duration of fever rather than the degree of fever was associated with increased odds of bacteremia, and this is similar to previous studies (6, 43). It was further identified that subjects were four (4) times more likely to have bacteremia if fever was present beyond 7 days. Given that the majority of subjects without bacteremia had fever for <7 days, which may have been due to undiagnosed viral illnesses, the increased likelihood of bacteremia after 7 days may thus represent a bacterial superimposition. Other studies have also failed to demonstrate a correlation between the degree of fever and positive bacterial culture (44, 45). Fever results from a cytokine-mediated elevation of the hypothalamic set point and is perhaps the earliest systemic feature of microbial invasion of the bloodstream (46). An increasing duration of fever could therefore reflect an intense bacterial multiplication and an increased tendency of positive culture as obtained in our study. Furthermore, participants who required hospitalization were four times more likely to have bacteremia when compared to outpatients, while those admitted with lethargy and fast breathing were six times more likely to have bacteremia, and this is consistent with a previous study (35). Febrile children presenting with lethargy and fast breathing often appear ill, necessitating inpatient care. In this study, a subjective assessment of “ill/toxic look” made by the attending emergency clinician was one of the eligibility criteria for hospitalization; the discriminatory power

TABLE 2 | Participant's sociodemographic characteristics and clinical history.

Variable	Bacteremia (%), n = 24	No bacteremia (%), n = 116	p-value	Total (%), n = 140
Age (months)				
≤12	4 (16.7)	21 (18.1)	0.445	25 (17.9)
13 to 24	6 (25.0)	43 (37.1)		49 (35.0)
25 to 59	14 (58.3)	52 (44.8)		66 (44.7)
Gender				
Male	11 (45.8)	66 (56.9)	0.321	77 (55.0)
Female	13 (54.2)	50 (43.1)		63 (45.0)
Median duration of fever* (IQR) days				
	7 (3.0–12.0)	4 (2.0–7.0)	0.005	4 (2.0–7.0)
Duration of fever				
<7 days	11 (45.8)	84 (72.4)	0.011	95 (67.9)
≥7 to ≤14 days	13 (54.2)	32 (27.6)		45 (32.1)
Hospitalization				
No	13 (54.2)	97 (83.6)	0.001	110 (78.6)
Yes	11 (45.8)	19 (16.4)		30 (21.4)
Rhinorrhoea				
Yes	11 (45.8)	56 (48.8)	0.827	67 (47.9)
No	13 (54.2)	60 (41.2)		73 (52.1)
Poor feeding^{&c}				
Yes	4 (16.7)	40 (34.5)	0.087	44 (31.4)
No	20 (83.3)	76 (65.5)		96 (68.6)
Diarrhea				
Yes	13 (54.2)	40 (34.5)	0.070	53 (37.9)
No	11 (45.8)	76 (65.5)		87 (62.1)
Vomiting				
Yes	9 (37.5)	35 (30.2)	0.482	44 (31.4)
No	15 (62.5)	81 (69.8)		96 (68.6)
Convulsions^{&c}				
Yes	2 (8.3)	11 (9.5)	0.860	13 (9.3)
No	22 (91.7)	105 (90.5)		127 (90.7)
Fast breathing^{&c}				
Yes	2 (8.3)	8 (6.9)	0.804	10 (7.1)
No	22 (91.7)	108 (93.1)		130 (92.9)
Abdominal pain				
Yes	5 (20.8)	10 (8.6)	0.078	15 (10.7)
No	19 (79.2)	106 (91.4)		125 (89.3)
Abdominal distension^{&c}				
Yes	1 (4.2)	3 (2.6)	0.672	4 (2.9)
No	23 (95.8)	113 (97.4)		136 (97.1)
Lethargy				
Yes	5 (20.8)	7 (6.0)	0.018	12 (8.6)
No	19 (79.2)	109 (94.0)		128 (91.4)
Dehydration^{&c}				
Yes	2 (8.3)	7 (6.0)	0.652	9 (6.4)
No	22 (91.7)	109 (94.0)		131 (93.6)

^{&c}Fischer's exact test performed.

Bold value means statistically significant variables.

of the criteria thus gave it credibility and could thus be adopted in triaging febrile children in other resource-poor settings where facilities and resources for inpatient care are suboptimal.

TABLE 3 | Participants' clinical examination and laboratory findings.

Variable	Bacteremia (%), n = 24	No bacteremia (%), n = 116	p-value	Total (%), n = 140
Fever grade				
High grade	6 (25.0)	9 (7.8)	0.013	15 (10.7)
Low and moderate grade	18 (75.0)	107 (92.2)		125 (89.3)
Tachycardia				
Absent	11 (45.8)	83 (71.6)	0.015	94 (67.1)
Present	13 (54.2)	33 (28.4)		46 (32.9)
Tachypnea				
Absent	11 (45.8)	84 (72.4)	0.011	95 (67.9)
Present	13 (54.2)	32 (27.6)		45 (32.1)
Thrombocytopenia*				
Absent	15 (75.0)	76 (83.5)	0.370	91 (82.0)
Present	5 (25.0)	15 (16.5)		20 (18.0)
Severe anemia*				
Absent	21 (95.5)	90 (93.8)	0.760	111 (94.1)
Present	1 (4.5)	6 (6.2)		7 (5.9)
Lymphopenia*				
Absent	10 (45.5)	67 (69.1)	0.036	77 (64.7)
Present	12 (54.5)	30 (30.9)		42 (35.3)
Neutropenia*				
Absent	20 (90.9)	87 (89.7)	0.864	107 (89.9)
Present	2 (9.1)	10 (10.3)		12 (10.1)
White cell count*				
Normal	18 (81.8)	64 (66.0)	0.018	82 (68.9)
Leukocytosis	0 (0.0)	25 (25.8)		25 (21.0)
Leukopenia	4 (18.2)	8 (8.2)		12 (10.1)

*Missing data, not all participants had blood samples taken.

Bold value means statistically significant variables.

Among all hematological parameters, a low lymphocyte count remained predictive of bacteremia, and participants with lymphopenia were four times more likely to have bacteremia compared to those who did not have lymphopenia. This finding could be due to the predominance of *Salmonella* species among the organisms isolated. Previous studies, including a controlled human infection model, have consistently demonstrated an association between *Salmonella* infections and lymphopenia (47, 48).

STRENGTHS AND LIMITATIONS

We have described the burden and the predictors of bacteremia among under-five children with acute undifferentiated fever. Such children pose a diagnostic challenge, and clinicians are often in a dilemma whether to use antibiotics empirically or not, unlike previous studies on bacteremia conducted among children with focal signs of infection, e.g., meningitis or pneumonia, in whom the deployment of empirical antibiotics is justified. In addition, our study design was prospective, and this enabled the recruitment and the collection of data from all our participants

TABLE 4 | Risk predictors for bacteremia.

Variables	AOR (95% CI)	p-value
Duration of fever		
≥7 to ≤14 days	4.75 (1.48–15.29)	0.009
<7 days	1.00	
Tachypnea		
Yes	6.27 (1.88–20.87)	0.003
No	1.00	
Hospitalization		
Yes	4.62 (1.45–14.72)	0.010
No	1.00	
Lymphopenia		
Yes	4.14 (1.31–13.11)	0.016
No	1.00	
Lethargy		
Yes	6.20 (1.15–33.44)	0.034
No	1.00	

using preset clinical criteria, thus minimizing selection bias as observed in a previous study (7).

However, about 13% of the study participants were lost to follow-up, and hence, the mortality rate as presented may not reflect the actual death attributable to bacteremia among the study participants. In addition, the potential impact of the pathogens causing bacteremia on the identified predictors could not be assessed due to the preponderance of *Salmonella* among the isolates. Therefore, this picture may not apply in other settings where pneumococcal or other forms of bacteremia are most prevalent.

CONCLUSIONS

We have shown that one in six under-five children presenting to a typical emergency unit in Northwestern Nigeria with AUF had bacteremia, and this was mainly due to *Salmonella*. Participants who required hospitalization, those that presented with lethargy, had fever beyond 7 days, had tachypnea, or had lymphocytes counts $<3 \times 10^9/L$, were at increased odds of bacteremia. We, therefore, recommend that in settings similar to ours, the presence of these clinical predictors could form the for a rational ordering of blood culture. Also, where facilities

REFERENCES

- Long SS. Diagnosis and management of undifferentiated fever in children. *J Infect.* (2016) 20:1–9. doi: 10.1016/j.jinf.2016.04.025
- Kashinkunti MD, Gundikeri SK, Dhananjaya M. Acute undifferentiated febrile illness- clinical spectrum and outcome from a tertiary care teaching hospital of north Karnataka. *Int J Biol Med Res.* (2013) 3:3399–402.
- Al-Eissa YA, Sameeh SG, Al-Zamil FA, Al-Salloum AA, Al-Omair AO, Al-Nasser MN. Pattern of febrile illnesses in children seen at a pediatric ambulatory care setting. *J Fam Community Med.* (2000) 7:61–5.

for blood cultures are not available, febrile under-five children without focal signs but possessing the highlighted clinical features should be treated empirically for bacteremia using the most sensitive antibiotics.

DATA AVAILABILITY STATEMENT

The raw data supporting the conclusions of this article will be made available by the authors, without undue reservation.

ETHICS STATEMENT

The study was reviewed and approved by Ethics Committees of the University of Nebraska Medical Center, Aminu Kano Teaching Hospital and the Kano State Hospital Management Board. Written informed consent to participate in this study was provided by the participant's legal guardian/next of kin.

AUTHOR CONTRIBUTIONS

TO conceived the study, recruited, and obtained clinical data. TO, TA, SE, and FH-H designed the study protocol. AI analyzed the data. TO and AI prepared the first draft of the manuscript. TO, RO, and SO are guarantors for the paper. All authors contributed to the first major revision of the manuscript, final manuscript revisions, and approval of the final version.

FUNDING

Research reported in this publication was supported in part by the National Institute of Allergy and Infectious Diseases of the National Institutes of Health (Grant Number. R01AI097493); the Bill & Melinda Gates Foundation (Grant Number. OPP1034619); internal grants from the University of Nebraska Medical Center.

ACKNOWLEDGMENTS

We thank the consultant pediatricians, medical officers, and nurses of the Department of Pediatrics, Murtala Muhammad Specialist Hospital, for their role in patient care during the study. Of immense contribution to patient care were Dr. Gezawa, Dr. H. Munir, Dr. Sadeeq Ibrahim, and Dr. Abubakar.

- Diez-Padriza N, Bassat Q, Roca A. Serum biomarkers for the diagnosis of malaria, bacterial and viral infections in children living in malaria-endemic areas. *Drugs Today.* (2011) 47:63–75. doi: 10.1358/dot.2011.47.1.1534821
- Egbe CA, Enabulele OI. Aetiologic agents of fevers of unknown origin among patients in Benin City, Nigeria. *Malays J Med Sci.* (2014) 21:37–43.
- Akpede GO, Abiodun PO, Sykes RM. Acute fevers of unknown origin in young children in the tropics. *J Pediatr.* (1993) 122:79–81. doi: 10.1016/S0022-3476(05)83491-2
- Wangdi K, Kasturiaratchi K, Nery SV, Lau CL, Gray DJ, Clements ACA. Diversity of infectious aetiologies of acute undifferentiated febrile illnesses

- in south and Southeast Asia : a systematic review. *BMC Infect Dis.* (2019) 19:1–17. doi: 10.1186/s12879-019-4185-y
8. Ingrid SL, Sonya LH, Arnold LS, Jerome C, Michal WF, Patrick ED. Bacteremia and malaria in Tanzanian children hospitalized for acute febrile illness. *J Trop Pediatr.* (2015) 61:81–5. doi: 10.1093/tropej/fmu069
 9. Bassat Q, Guinovart C, Sigaúque B, Mandomando I, Aide P, Sacarlal J, et al. Severe malaria and concomitant bacteraemia in children admitted to a rural Mozambican hospital. *Trop Med Int Heal.* (2009) 14:1011–9. doi: 10.1111/j.1365-3156.2009.02326.x
 10. D'Acromont V, Kilowoko M, Kyungu E, Philipina S, Sangu W, Kahama-Maró J, et al. Beyond malaria—causes of fever in outpatient Tanzanian children. *N Engl J Med.* (2014) 370:809–17. doi: 10.1056/NEJMoa1214482
 11. Tam PI, Obaro SK, Storch G. Challenges in the etiology and diagnosis of acute febrile illness in children in low- and middle- income countries. *J Pediatr Infect Dis Soc.* (2016) 5:190–205. doi: 10.1093/jpids/piw016
 12. Okumura J, Wakai S, Umenai T. Drug utilisation and self-medication in rural communities in Vietnam. *Soc Sci Med.* (2002) 54:1875–86. doi: 10.1016/S0277-9536(01)00155-1
 13. Laxminarayan R, Duse A, Wattal C, Zaidi AKM, Wertheim HFL, Sumpradit N, et al. Antibiotic resistance : the need for global solutions. *Lancet Infect Dis.* (2013) 3099:1057–98. doi: 10.1016/S1473-3099(13)70318-9
 14. Olowu A, Jbe E, Esangbedo D, En E, Esezobor C, Ag F, et al. Management of community acquired pneumonia (CAP) in children : clinical practice guidelines by the paediatrics association of Nigeria (PAN). *Niger J Paed.* (2015) 42:283–92. doi: 10.4314/njp.v42i4.1
 15. Boyles TH, Bamford CM, Health N, Bateman KJ, Dramowski A. Guidelines for the management of acute meningitis in children and adults in South Africa. *South Afric J Epidemiol Infect.* (2013) 28:5–15. doi: 10.1080/10158782.2013.11441513
 16. Chapman SM, Maconochie IK. Early warning scores in paediatrics: an overview. *Arch Dis Child.* (2019) 104:395–9. doi: 10.1136/archdischild-2018-314807
 17. Pediatric Early Warning Score (PEWS). Available online at: <https://www.mdcalc.com/pediatric-early-warning-score-pews> (accessed November 28, 2021).
 18. Romaine ST, Potter J, Khanijau A, Mcgalliard RJ. Accuracy of a modified qSOFA score for predicting critical care admission in febrile children. *Pediatrics.* (2020) 146:e20200782. doi: 10.1542/peds.2020-0782
 19. Seymour CW, Liu VX, Iwashyna TJ, Brunkhorst FM, Rea TD, Scherag A, et al. Assessment of clinical criteria for sepsis for the third international consensus definitions for sepsis and septic shock (Sepsis-3). *JAMA.* (2016) 315:762–74. doi: 10.1001/jama.2016.0288
 20. Askim Å, Moser F, Gustad LT, Stene H, Gundersen M, Åsvold BO, et al. Poor performance of quick-SOFA (qSOFA) score in predicting severe sepsis and mortality – a prospective study of patients admitted with infection to the emergency department. *Scand J Trauma Resusc Emerg Med.* (2017) 25:1–9. doi: 10.1186/s13049-017-0399-4
 21. Gerald van B, Lloyd DF, Patrick JH, Thomas L. Sample sizes for observational studies. In: *Biostatistics: A methodology for the health sciences*. 2nd Ed. Washington, DC: John Wiley & Sons, Inc. (1993). p. 844–64.
 22. Joshi R, Colford JM, Reingold AL, Kalantri S. Nonmalarial acute undifferentiated fever in a rural hospital in central India: diagnostic uncertainty and overtreatment with antimalarial agents. *Am J Trop Med Hyg.* (2008) 78:393–9. doi: 10.4269/ajtmh.2008.78.393
 23. Shraim M, Blagojevic-Bucknall M, Mallen CD, Dunn KM. Repeated primary care consultations for non-specific physical symptoms in children in UK: a cohort study. *BMC Fam Pract.* (2014) 15:195–204. doi: 10.1186/s12875-014-0195-4
 24. Brooks GF, Carroll KC. Principle of diagnostic medical microbiology. In: Brooks GF, Carroll KC, Butel JS, Morse SA, editors. *Jawetz, Melnick, and Adelberg's Medical Microbiology*. 26th ed. McGraw-Hill Companies, Inc. (2010). p. 753–84.
 25. BD Biosciences. *Automated Blood Culture: BACTEC™ 9240/9120/9050*. (2001). Available online at: www.bd.com (accessed February 6, 2016). p. 1–21.
 26. Mindy JP, Gloria A, Cheryl B, John E, Richard F, Joan SK, et al. *Manual For Identification And Intimicrobial Susceptibility Testing Of Bacterial Pathogens Of Public Health Importance In The Developing World*. Geneva: CDC/WHO (2003). p. 1–385.
 27. Obaro S, Lawson L, Essen U, Ibrahim K, Brooks K, Otuneye A, et al. Community acquired bacteremia in young children from central Nigeria—a pilot study. *BMC Infect Dis.* (2011) 11:e137. doi: 10.1186/1471-2334-11-137
 28. Ogoina D. Fever, fever patterns and diseases called 'fever' - a review. *J Infect Public Health.* (2011) 4:108–24. doi: 10.1016/j.jiph.2011.05.002
 29. Russell FM, Reyburn R, Chan J, Tuivaga E, Lim R, Lai J, et al. Impact of the change in WHO ' s severe pneumonia case definition on hospitalized pneumonia epidemiology : case studies from six countries. *Bull World Health Organ.* (2019) 97:386–93. doi: 10.2471/BLT.18.223271
 30. National Collaborating Centre for Women's and Children's Health (UK). *Feverish Illness in Children: Assessment and Initial Management in Children Younger Than 5 Years*. London (2013).
 31. UCSF Benioff Children's Hospital. *Medical Test: Platelet Count*. Available online at: <https://www.ucsfbenioffchildrens.org/tests/003647.html> (accessed December 2, 2020).
 32. MSD Manual Professional. *Overview of Leukopenias*. Available online at: <https://www.msmanuals.com/professional/hematology-and-oncology/leukopenias/overview-of-leukopenias> doi: 10.1093/jacmar/dlaa042 (accessed December 2, 2020).
 33. Shamikumar RP, Narayan K, Sujatha B, Nair LD V. The diagnosis and outcome of acute undifferentiated febrile brile illness among children – a hospital based observational study. *Int J Recent Trends Sci Technol.* (2016) 18:323–7.
 34. Olopoenia LA, Aprileona LK. Widal agglutination test - 100 years later: still plagued by controversy. *Postgrad Med J.* (2000) 76:80–4. doi: 10.1136/pmj.76.892.80
 35. Berezin EN, Iazzetti MA. Evaluation of the incidence of occult bacteremia among children with fever of unknown origin. *Braz J Infect Dis.* (2006) 10:396–9. doi: 10.1590/S1413-86702006000600007
 36. Obaro SK, Hassan-hanga F, Olateju EK, Umoru D, Lawson L, Olanipekun G, et al. Salmonella bacteremia among children in Central and Northwest Nigeria, 2008 – 2015. *Clin Infect Dis.* (2015) 61:325–31. doi: 10.1093/cid/civ745
 37. Save the Children. *Child malnutrition in Northern Nigeria: An illustrative case study*. (2012). Available online at: www.savethechildren.org.uk (accessed May 29, 2019).
 38. Isendahl J, Manjuba C, Amabelia R, Weiping X, Henriques-Normark B, Christian GG, et al. Prevalence of community-acquired bacteraemia in Guinea-Bissau: an observational study. *BMC Infect Dis.* (2014) 14:e3859. doi: 10.1186/s12879-014-0715-9
 39. Ogunkunle TO, Abdulkadir MB, Katibi SO, Bello SO, Raheem RA, Olaosebikan R. Pediatric blood culture isolates and antibiotic sensitivity pattern in a Nigerian tertiary hospital. *Niger J Med.* (2020) 29:261–4. doi: 10.4103/NJM.NJM_55_20
 40. Orrett FA, Changoor E. Bacteremia in children at a regional hospital in Trinidad. *Int J Infect Dis.* (2007) 11:145–51. doi: 10.1016/j.ijid.2005.12.005
 41. Burke RE, Halpern MS, Baron EJ, Gutierrez K. Pediatric and neonatal staphylococcus aureus bacteremia: epidemiology, risk factors, and outcome. *Infect Control Hosp Epidemiol.* (2009) 30:636–44. doi: 10.1086/597521
 42. Paterson DL, Bonomo RA. Extended-spectrum b-lactamases: a clinical update. *Clin Microbiol Rev.* (2005) 18:6757–686. doi: 10.1128/CMR.18.4.657-686.2005
 43. Hsiao AL, Chen L, Baker MD, Hsiao AL, Chen L, Baker MD. Incidence and predictors of serious bacterial infections among 57- to 180-day-old infants. *Pediatrics.* (2006) 117:1695–701. doi: 10.1542/peds.2005-1673
 44. Kiemde F, Tahita MC, Lompo P, Rouamba T, Some AM, Tinto H, et al. Treatable causes of fever among children under five years in a seasonal malaria transmission area in Burkina Faso. *Infect Dis Poverty.* (2018) 7:60. doi: 10.1186/s40249-018-0442-3
 45. Omolola OA, Adebowale AA, Kikelomo O. Predictors of bacteremia among febrile infants in Ibadan, Nigeria. *J Heal Popul Nutr.* (2002) 20:223–9.
 46. Keith RP. Fever. In: Kliegman RM, Stanton BF, Joseph WSGI, Schor NF, Behrman RE, editors. *Nelson Textbook of Pediatrics*. 19th ed. Philadelphia: Elsevier Saunders (2011). p. 839–41.
 47. Herbingier K, Hanus I, Beissner M, Berens-riha N, Kroidl I, Sonnenburg F Von, et al. Lymphocytosis and Lymphopenia Induced by Imported Infectious Diseases : A Controlled Cross-Sectional Study of 17, 229 Diseased German Travelers Returning from the Tropics and Subtropics. *Am J Trop Med Hyg.* (2016) 94:1385–91. doi: 10.4269/ajtmh.15-0920

48. Fresnay S, McArthur MA, Magder LS, Darton TC. Importance of salmonella typhi-responsive CD8 + T cell immunity in a human typhoid fever challenge model. *Front Immunol.* (2017) 8:208. doi: 10.3389/fimmu.2017.00208

Conflict of Interest: The authors declare that the research was conducted in the absence of any commercial or financial relationships that could be construed as a potential conflict of interest.

Publisher's Note: All claims expressed in this article are solely those of the authors and do not necessarily represent those of their affiliated organizations, or those of

the publisher, the editors and the reviewers. Any product that may be evaluated in this article, or claim that may be made by its manufacturer, is not guaranteed or endorsed by the publisher.

Copyright © 2022 Ogunkunle, Adedoyin, Ernest, Hassan-Hanga, Imam, Olaosebikan and Obaro. This is an open-access article distributed under the terms of the Creative Commons Attribution License (CC BY). The use, distribution or reproduction in other forums is permitted, provided the original author(s) and the copyright owner(s) are credited and that the original publication in this journal is cited, in accordance with accepted academic practice. No use, distribution or reproduction is permitted which does not comply with these terms.