

Department of Pediatrics Faculty Papers

Department of Pediatrics

Follow this and additional works at: <https://jdc.jefferson.edu/pedsfp>



Part of the [Neurology Commons](#), and the [Pediatrics Commons](#)

Let us know how access to this document benefits you

Genetic Testing to Inform Epilepsy Treatment Management From

an International Study of Clinical Practice

McKnight, Dianalee; Morales, Ana; Hatchell, Kathryn E.; Bristow, Sara L.; Bonkowsky, Joshua L.; Perry, Michael Scott; Berg, Anne T.; Borlot, Felipe; Esplin, Edward D.; Moretz, Chad; Angione, Katie; Ríos-Pohl, Loreto; Nussbaum, Robert L.; Aradhya, Swaroop; Haldeman-Englert, Chad R.; Levy, Rebecca J.; Parachuri, Venu G.; Lay-Son, Guillermo; De Montellano, David J. Dávila-Ortiz; Ramirez-Garcia, Miguel Angel; Benítez Alonso, Edgar O.; Ziobro, Julie; Chirita-Emandi, Adela; Felix, Temis M.; Kulasa-Luke, Dianne; Megarbane, Andre; Karkare, Shefali; Chagnon, Sarah L.; Humberson, Jennifer B.; Assaf, Melissa J.; Silva, Sebastian; Zarroli, Katherine; Boyarchuk, Oksana; Nelson, Gary R.; Palmquist, Rachel; Hammond, Katherine C.; Kathryn Sealat, Bullier, Susan B.; Nolan, Melinda; Batley, Kaitlin Y.; Chavda, Devraj; Reyes-Silva, Carlos Alberto; Miroshnikov, Oleksandr; Zuccarelli, Britton; Amlie-Wolf, Louise; Wheless, James W.; Seinfeld, Syndi; Kanhangad, Manoj; Freeman, Jeremy L.; Monroy-Santoyo, Susana; Rodriguez-Vazquez, Natalia; Ryan, Monique M.; Machie, Michelle; Guerra, Patricio; Hassan, Muhammad Jawad; Candee, Meghan S.; Bupp, Caleb P.; Park, Kristen L.; Muller, Eric; Lupo, Pamela; Pedersen, Robert C.; Arain, Amir M.; Murphy, Andrea; Schatz, Krista; Mu, Weiyi; Kalika, Paige M.; Plaza, Lautaro; Kellogg, Marissa A.; Lora, Evelyn G.; Joshua L. Bonkowsky, University of Utah; Carson, Robert P.; Svystilnyk, Victoria; Venegas, Viviana; Luke, Rebecca R.; Jiang, Huiyuan; Stetsenko, Tetiana; Duenas-Roque, Milagros M.; Trasmonte, Joseph; Burke, Rebecca J.; Hurst, Anna C. E.; Smith, Douglas M.; Massingham, Lauren J.; Pisani, Laura; Costin, Carrie E.; Ostrander, Betsy; Filloux, Francis M.; Ananth, Amitha L.; Mohamed, Ismail S.; Nechai, Alla; Dao, Jasmin M.; Fahey, Michael C.; Aliu, Ermal; Fatchek, Stephen; Press, Craig A.; Treat, Lauren; Eschbach, Krista; Starks, Angela; Kammeyer, Ryan; Bear, Joshua J.; Jacobson, Mona; Chernuha, Veronika; Meibos, Bailey; Wong, Kristen; Sweney, Matthew T.; Espinoza, A. Chris; Van Orman, Colin B.; Weinstock, Arie; Kumar, Ashutosh; Soler-Alfonso, Claudia; Nolan, Danielle A.; Raza, Muhammad; Rojas Carrion, Miguel David; Chari, Geetha; Marsh, Eric D.; Shiloh-Malawsky, Yael; Parikh, Sumit; Gonzalez-Giraldo, Ernesto; Fulton, Stephen; Sogawa, Yoshimi; Burns, Kaitlyn; Malets, Myroslava; Montiel Blanco, Johnny David; Habela, Christa W.; Wilson, Carey A.; Guzmán, Guillermo G.; and Pavliuk, Mariia, "Genetic Testing to Inform Epilepsy Treatment Management From an International Study of Clinical Practice" (2022). *Department of Pediatrics Faculty Papers*. Paper 127.

<https://jdc.jefferson.edu/pedsfp/127>

This Article is brought to you for free and open access by the Jefferson Digital Commons. The Jefferson Digital Commons is a service of Thomas Jefferson University's [Center for Teaching and Learning \(CTL\)](#). The Commons is a showcase for Jefferson books and journals, peer-reviewed scholarly publications, unique historical collections from the University archives, and teaching tools. The Jefferson Digital Commons allows researchers and interested readers anywhere in the world to learn about and keep up to date with Jefferson scholarship. This article has been accepted for inclusion in Department of Pediatrics Faculty Papers by an authorized administrator of the Jefferson Digital Commons. For more information, please contact: JeffersonDigitalCommons@jefferson.edu.

Authors

Dianalee McKnight, Ana Morales, Kathryn E. Hatchell, Sara L. Bristow, Joshua L. Bonkowsky, Michael Scott Perry, Anne T. Berg, Felipe Borlot, Edward D. Esplin, Chad Moretz, Katie Angione, Loreto Ríos-Pohl, Robert L. Nussbaum, Swaroop Aradhya, Chad R. Haldeman-Englert, Rebecca J. Levy, Venu G. Parachuri, Guillermo Lay-Son, David J. Dávila-Ortiz De Montellano, Miguel Angel Ramirez-Garcia, Edmar O. Benítez Alonso, Julie Ziobro, Adela Chirita-Emandi, Temis M. Felix, Dianne Kulasa-Luke, Andre Megarbane, Shefali Karkare, Sarah L. Chagnon, Jennifer B. Humberson, Melissa J. Assaf, Sebastian Silva, Katherine Zarroli, Oksana Boyarchuk, Gary R. Nelson, Rachel Palmquist, Katherine C. Hammond, Sean T. Hwang, Susan B. Boutlier, Melinda Nolan, Kaitlin Y. Batley, Devraj Chavda, Carlos Alberto Reyes-Silva, Oleksandr Miroshnikov, Britton Zuccarelli, Louise Amlie-Wolf, James W. Wheless, Syndi Seinfeld, Manoj Kanhangad, Jeremy L. Freeman, Susana Monroy-Santoyo, Natalia Rodriguez-Vazquez, Monique M. Ryan, Michelle Machie, Patricio Guerra, Muhammad Jawad Hassan, Meghan S. Candee, Caleb P. Bupp, Kristen L. Park, Eric Muller, Pamela Lupo, Robert C. Pedersen, Amir M. Arain, Andrea Murphy, Krista Schatz, Weiyi Mu, Paige M. Kalika, Lautaro Plaza, Marissa A. Kellogg, Evelyn G. Lora, Robert P. Carson, Victoria Svystilnyk, Viviana Venegas, Rebecca R. Luke, Huiyuan Jiang, Tetiana Stetsenko, Milagros M. Dueñas-Roque, Joseph Trasmonte, Rebecca J. Burke, Anna C. E. Hurst, Douglas M. Smith, Lauren J. Massingham, Laura Pisani, Carrie E. Costin, Betsy Ostrander, Francis M. Filloux, Amitha L. Ananth, Ismail S. Mohamed, Alla Nechai, Jasmin M. Dao, Michael C. Fahey, Ermal Aliu, Stephen Falchek, Craig A. Press, Lauren Treat, Krista Eschbach, Angela Starks, Ryan Kammeyer, Joshua J. Bear, Mona Jacobson, Veronika Chernuha, Bailey Meibos, Kristen Wong, Matthew T. Sweney, A. Chris Espinoza, Colin B. Van Orman, Arie Weinstock, Ashutosh Kumar, Claudia Soler-Alfonso, Danielle A. Nolan, Muhammad Raza, Miguel David Rojas Carrion, Geetha Chari, Eric D. Marsh, Yael Shiloh-Malawsky, Sumit Parikh, Ernesto Gonzalez-Giraldo, Stephen Fulton, Yoshimi Sogawa, Kaitlyn Burns, Myroslava Malets, Johnny David Montiel Blanco, Christa W. Habela, Carey A. Wilson, Guillermo G. Guzmán, and Mariia Pavliuk

Genetic Testing to Inform Epilepsy Treatment Management From an International Study of Clinical Practice

Dianalee McKnight, PhD; Ana Morales, MS; Kathryn E. Hatchell, PhD; Sara L. Bristow, PhD; Joshua L. Bonkowski, MD, PhD; Michael Scott Perry, MD; Anne T. Berg, PhD; Felipe Borlot, MD; Edward D. Esplin, MD, PhD; Chad Moretz, ScD; Katie Angione, MS; Loreto Ríos-Pohl, MD; Robert L. Nussbaum, MD; Swaroop Aradhya, PhD; and the ELEVIATE Consortium

IMPORTANCE It is currently unknown how often and in which ways a genetic diagnosis is given to a patient with epilepsy is associated with clinical management and outcomes.

OBJECTIVE To evaluate how genetic diagnoses in patients with epilepsy are associated with clinical management and outcomes.

DESIGN, SETTING, AND PARTICIPANTS This was a retrospective cross-sectional study of patients referred for multigene panel testing between March 18, 2016, and August 3, 2020, with outcomes reported between May and November 2020. The study setting included a commercial genetic testing laboratory and multicenter clinical practices. Patients with epilepsy, regardless of sociodemographic features, who received a pathogenic/likely pathogenic (P/LP) variant were included in the study. Case report forms were completed by all health care professionals.

EXPOSURES Genetic test results.

MAIN OUTCOMES AND MEASURES Clinical management changes after a genetic diagnosis (ie, 1 P/LP variant in autosomal dominant and X-linked diseases; 2 P/LP variants in autosomal recessive diseases) and subsequent patient outcomes as reported by health care professionals on case report forms.

RESULTS Among 418 patients, median (IQR) age at the time of testing was 4 (1-10) years, with an age range of 0 to 52 years, and 53.8% (n = 225) were female individuals. The mean (SD) time from a genetic test order to case report form completion was 595 (368) days (range, 27-1673 days). A genetic diagnosis was associated with changes in clinical management for 208 patients (49.8%) and usually (81.7% of the time) within 3 months of receiving the result. The most common clinical management changes were the addition of a new medication (78 [21.7%]), the initiation of medication (51 [14.2%]), the referral of a patient to a specialist (48 [13.4%]), vigilance for subclinical or extraneurological disease features (46 [12.8%]), and the cessation of a medication (42 [11.7%]). Among 167 patients with follow-up clinical information available (mean [SD] time, 584 [365] days), 125 (74.9%) reported positive outcomes, 108 (64.7%) reported reduction or elimination of seizures, 37 (22.2%) had decreases in the severity of other clinical signs, and 11 (6.6%) had reduced medication adverse effects. A few patients reported worsening of outcomes, including a decline in their condition (20 [12.0%]), increased seizure frequency (6 [3.6%]), and adverse medication effects (3 [1.8%]). No clinical management changes were reported for 178 patients (42.6%).

CONCLUSIONS AND RELEVANCE Results of this cross-sectional study suggest that genetic testing of individuals with epilepsy may be materially associated with clinical decision-making and improved patient outcomes.

JAMA Neurol. 2022;79(12):1267-1276. doi:10.1001/jamaneurol.2022.3651
Published online October 31, 2022.

← Editorial page 1227

+ Supplemental content

Author Affiliations: Author affiliations are listed at the end of this article.

Group Information: The ELEVIATE Consortium authors appear at the end of this article.

Corresponding Author: Dianalee McKnight, PhD, Invitae, 1400 16th St, San Francisco, CA 94103 (dee.mcknight@invitae.com).

Genetic etiologies are responsible for seizures in up to 40% of children and 23% of adults with epilepsy.¹⁻⁷ Early use of genetic testing for diagnosis and clinical management has been proposed; however, recommendations for genetic testing in individuals with epilepsy are currently limited.⁸⁻¹¹ Additionally, estimates of how often a molecular diagnosis has clinically actionable implications have varied widely, from 60% in a single-center study¹² to 20% in a multicenter study,¹³ although more recent studies estimate 50%.^{6,14,15} Studies of treatment approaches based on genetic diagnoses have shown improved outcomes in patients with epilepsy.^{1,5,7,12,16-19}

Our goal was to perform a large-scale, real-world characterization of how often and in which ways genetic testing was associated with clinical management and outcomes in a broad sample of more than 400 adults and children with epilepsy who were referred for genetic testing.

Methods

Study Population and Design

This study was reviewed by the WCG institutional review board and was granted a waiver of authorization and considered exempt because no personal health information was shared on the case report forms (CRFs). Patients of any age were eligible for the study if their health care professionals (HCPs) had ordered genetic testing for epilepsy through Invitae between March 18, 2016, and August 3, 2020, and their genetic test results indicated pathogenic (P) or likely pathogenic (LP) variant(s) in at least 1 gene on the panel. In May 2020, HCPs were invited by email with a link to a CRF (Qualtrics) that remained open through November 2020. The following information was requested: HCP practice characteristics, patients' clinical information related to the genetic test, subsequent clinical management decisions, and patient outcomes (eMethods in the [Supplement](#)). Information from the patients' test requisition forms at the time of testing (ie, age at testing, sex, self-reported race and ethnicity) and genetic test results were also analyzed. The following race and ethnicity groups were included: Asian, Black, Hispanic, White, multiracial, and other (ie, Arab, Ashkenazi Jewish, Bangladeshi, Kenyan, Mediterranean, Native American, Pacific Islander, Persian, Polish, Punjabi, and Slavic). Patients consented to genetic testing at time of order and opted into research.

Outcomes

For each HCP-completed CRF, the patient was confirmed to have received testing through Invitae based on the test requisition form and deidentified patient identification. Only completed CRF data fields for unique patients with a definitive genetic diagnosis, as confirmed by verifying the genetic test report, were included (eMethods in the [Supplement](#)). Free-text responses and/or conflicting CRF responses were reviewed, standardized and reconciled, and coded by 2 authors (A.M., D.M.). For the final study cohort, data were aggregated and evaluated using descriptive statistics and reported ac-

Key Points

Question How frequently do genetic diagnoses in patients with epilepsy change clinical management, and what are the subsequent patient outcomes?

Findings In this cross-sectional study among 418 patients with epilepsy who received a genetic diagnosis, 208 (49.8%) had clinical management changes. Of 167 patients with follow-up information, treatment changes were associated with improved patient outcomes in 125 patients (74.9%); the most common improvement was a reduction or elimination of seizures (108 of 167 patients [64.7%]).

Meaning These findings suggest the use of genetic testing to guide clinical management of patients with epilepsy to improve patient outcomes.

ording to Strengthening the Reporting of Observational Studies in Epidemiology ([STROBE](#)) reporting guidelines.²⁰

We assessed response rates in 2 ways to assess ascertainment bias. First, we calculated the overall and mean proportions of eligible patients who had a CRF completed by the HCP when there were 2 or more eligible patients (ie, the HCP response rate). Second, the cohort of patients for whom HCPs had filled out CRFs (study cohort) was compared with all eligible patients with definitive genetic diagnoses without a CRF (nonresponder cohort) to assess differences in sex and age, time lapsed from genetic testing to CRF invitation, and the diagnostic gene. Clinical actionability of genes with diagnostic findings were assessed based on previous literature.^{6,15}

To assess patient outcomes after changes in clinical management (if reported), responses to question 19 on the CRF were assessed, which was designed to capture multiple options related to qualitative changes in seizure frequency, adverse effects, and other changes in condition. HCPs could also report no information on outcomes (ie, not enough time passed to evaluate outcome or yet to follow up with the patient). All patients with a reported outcome (positive or negative) were included in the analyses. In addition, the proportion of patients with any positive outcome or with a reduction/elimination in seizures was calculated.

Statistical Analysis

A quantitative measurement of changes in seizure frequency was assessed in patients for whom a clinical presentation of epilepsy was indicated (question 9) and for whom clinical management was changed due to genetic test results (question 20). The Kolmogorov-Smirnov nonparametric test assessed differences in distribution. Statistical significance was set at a 2-sided P value $< .05$. Of note, this analysis included patients who may have been reported not to have follow-up available or not enough time for follow-up per responses to question 19.

Results

Characteristics of Responding HCPs and Patients

We contacted 1567 HCPs with 3572 eligible patients. One-hundred sixty-eight HCPs completed CRFs for 479 patients.

Sixty-one responses were excluded due to duplicate or incomplete responses (25 responses), nondiagnostic findings (26 responses), invalid patient identifiers (9 responses), and exome sequencing (1 response), leaving a final cohort of 418 unique patients from 415 families (11.7% response rate) (eFigure 1 in the Supplement). Median (IQR) patient age at the time of testing was 4 (1-10) years of age, with an age range of 0 to 52 years; 53.8% (n = 225) were female individuals, and 193 (46.2%) were male individuals. Patients identified with the following race and ethnic groups: 15 Asian (3.6%), 18 Black (4.3%), 81 Hispanic (19.4%), 220 White (52.6%), 30 multiracial (7.2%), and 14 other (3.3%).

On average, each HCP completed CRFs for 2.5 patients (range, 1-13 patients); 83 (49.4%) reported on behalf of 1 patient, 32 (19.0%) for 2 patients, and 53 (31.5%) for 3 or more patients. The clinical specialties of the 168 HCPs were genetics (38 [22.6%]), pediatric neurology (29 [17.3%]), neurology (26 [15.5%]), epilepsy (13 [7.7%]), internal medicine (1 [0.6%]), or multiple specialties (61 [36.3%]). The mean (SD) time from test order to CRF completion was 595 (368) days (range, 27-1673 days; median [IQR], 507 [304-832] days).

Demographic characteristics of the study cohort are reported in the Table. Approximately two-thirds of patients (287 of 418 [68.7%]) were 7 years or younger at the time of genetic testing (Figure 1A). The majority of patients (378 of 418 [90.4%]) were reported to have a clinical presentation of epilepsy, with seizure onset and a clinical diagnosis occurring most frequently in infancy (Figure 1A). A small portion of patients was tested several years after their clinical diagnoses (Figure 1B).

Ascertainment Bias

Among the 168 HCPs who completed a CRF, 84 were invited to provide information for more than 1 eligible patient (400 patients in total). A CRF was completed for 313 patients (78.3%), and the mean response rate per clinician was 83.6%.

In addition, the study cohort (418 patients) was compared with all patients with a genetic diagnosis without a completed CRF (2992 patients). No significant differences in sex, age, or lapse from time of testing to CRF request were observed (eTable 1 in the Supplement). Both groups had in common 7 of the 10 genes that yielded the most genetic diagnoses (ie, *SCN1A*, *PRRT2*, *KCNQ2*, *MECP2*, *DEPDC5*, *PCDH19*, and *STXBPI*). The other genes with frequent genetic diagnoses included *SCN2A*, *NPRL3*, and *CDKL5* in the nonresponder cohort and *TSC2*, *KCNT1*, and *SYNGAP1* in the study cohort (eTable 2 in the Supplement). The proportion of patients with genetic findings in genes with established clinical management changes was similar between the study (291 of 422 [69.0%]) and nonresponder (2026 of 3018 [67.1%]) cohorts (eTables 1 and 2 in the Supplement).^{6,15}

Clinical Actionability of Genetic Test Results

Diagnostic findings were found across 76 genes (eTable 3 in the Supplement), and 26 genes (34%) are reported in the literature as being clinically actionable (eTable 2 in the Supplement). HCPs reported that genetic diagnoses led to changed clinical management (question 13) for half of all patients (208 of 418 [49.8%]) (Figure 2A), the majority of whom (170 [81.7%])

had changes implemented within 3 months of receiving the genetic result (question 18). The genes with the most frequent genetic diagnoses that had the highest rates of reported clinical management changes were *TSC2* (78.6%), *SCN1A* (75.0%), *MECP2* (62.5%), *PCDH19* (60.0%), and *KCNQ2* (52.6%) (eTable 4 in the Supplement). The most common changes (question 14) were adding a new medication (78 [21.7%]), initiating medication (51 [14.2%]), being referred to a specialist (48 [13.4%]), monitoring for extraneurological disease (46 [12.8%]), or stopping a medication (42 [11.7%]) (Figure 2B). Among the 48 patients referred to a specialist, the most common referrals were for genetics specialists (11 [22.9%]), cardiologists (9 [18.8%]), and ophthalmologists (5 [18.8%]) (eFigure 2 in the Supplement). Clinical management changes were similar regardless of age at testing, though fewer adults (1 [5.6%]) than pediatric patients (50 [26.3%]) across all age groups were reported to start a new medication (eFigure 3 in the Supplement).

No changes in clinical management were reported for 178 patients (42.6%) (Figure 2A). The most common reason (86 [48.3%]) was that the patient's current management plan was already consistent with recommendations associated with the

Table. Patient Characteristics

Characteristic	Patients, No. (%)
No.	418
Age at testing, y	
0-7	287 (68.7)
8-17	90 (21.5)
≥18	41 (9.8)
Age at testing, median (IQR) [range], y	4 (1-10) [0-52]
Sex	
Male	193 (46.2)
Female	225 (53.8)
Race and ethnicity	
Asian	15 (3.6)
Black	18 (4.3)
Hispanic	81 (19.4)
Multiracial	30 (7.2)
White	220 (52.6)
Other ^a	14 (3.3)
Unknown	40 (9.6)
How the patient was referred to the HCP	
Self	56 (13.4)
Another clinician ^b	351 (84.0)
Other	3 (0.7)
Unknown	8 (1.9)
Reason for genetic testing	
Clinical presentation of epilepsy	378 (90.4)
Clinical presentation suspicious for genetic etiology	6 (1.4)
Suspected genetic syndrome	5 (1.2)
Family history	4 (1.0)
Multiple reasons	12 (2.9)
Other/unknown	13 (3.1)

(continued)

Table. Patient Characteristics (continued)

Characteristic	Patients, No. (%)
HCP practice type	
Academic center	114 (27.3)
Children's hospital	134 (32.1)
Private practice	56 (13.4)
Community hospital	22 (5.3)
Multiple ^c	92 (22.0)
Country of HCP referral	
US	307 (73.4)
Ukraine	28 (6.7)
Chile	24 (5.7)
Romania	11 (2.6)
Peru	10 (2.4)
Mexico	8 (1.9)
Australia	5 (1.2)
Israel	4 (1.0)
New Zealand	4 (1.0)
Lebanon	3 (0.7)
Malaysia	3 (0.7)
Other countries ^d	11 (2.6)

Abbreviation: HCP, health care provider.

^a Includes Arab, Ashkenazi Jewish, Bangladeshi, Kenyan, Mediterranean, Native American, Pacific Islander, Persian, Polish, Punjabi, and Slavic.

^b Includes referrals from the following specialties: pediatrician (189 [53.8%]), neurologist (75 [21.4%]), hospital consult (49 [14.0%]), family medicine (14 [4.0%]), epilepsy specialist (12 [3.4%]), physician assistant (3 [0.8%]), genetics (2 [0.6%]), neonatologist (1 [0.3%]), psychiatrist (1 [0.3%]), and unknown (5 [1.4%]).

^c Includes combinations of the following practice types: children's hospital and academic center (56 patients); private practice and children's hospital (20 patients); private practice, children's hospital, and academic center (11 patients); private practice and academic center (2 patients); academic center and community hospital (1 patient); children's hospital, academic center, and community hospital (1 patient); and children's hospital and community hospital (1 patient).

^d Includes the following countries: Canada (2 patients), Croatia (2 patients), Ecuador (2 patients), Pakistan (2 patients), Brazil (1 patient), Dominican Republic (1 patient), and Thailand (1 patient).

genetic test result, noted in question 15 in the eMethods in the Supplement (Figure 2C). Other common reasons were that the genetic test result was not immediately informative for clinical management (45 [25.2%]) or that it could be useful for informing future treatment possibilities (34 [19.1%]) (eg, to monitor a patient's prognosis).

Patient Outcomes After Changes to Clinical Management

When clinical management was changed after genetic testing, HCPs were asked about patient outcomes (208 of 418 [49.8%]) in question 19. Of the 208 patients, follow-up information was not available for 41 of them (20.2%) because not enough time had passed (in 11 patients) or follow-up with the HCP had not yet occurred (in 30 patients).

The mean (SD) follow-up period from genetic testing to CRF completion among the 167 patients with available outcomes was 584 (365) days. A positive outcome was reported for 125 individuals (74.9%). Among patients with diagnostic find-

ings in genes that were most common to have outcomes reported, positive outcome rates after treatment changes were highest for *SCN1A* (35 of 42 [83.3%]), *PRRT2* (12 of 13 [92.3%]), *TSC2* (8 of 9 [88.9%]), *KCNQ2* (8 of 8 [100%]), and *DEPDC5* (7 of 8 [87.5%]) (Figure 3; eTable 4 in the Supplement). A reduction or elimination of seizures was reported in 108 patients (64.7%) when clinical management was altered due to genetic testing results. Decreases in the severity of other clinical signs were also reported in 37 patients (22.2%) as indicated by free text, including improvements in behavior, development, alertness, school performance, or movement issues. Eleven patients (6.6%) experienced decreases in medication adverse effects.

Seizure frequency before and after clinical management changes were compared among 175 patients who had a clinical presentation of epilepsy reported before genetic testing and who had clinical management changes due to the genetic diagnosis. Overall, seizure frequency decreased in 113 patients (64.6%), did not change for 40 patients (22.9%), and increased for 22 patients (12.6%) (Figure 4). Seizure frequency significantly decreased after genetic result-based management changes ($P = 4.60 \times 10^{-9}$).

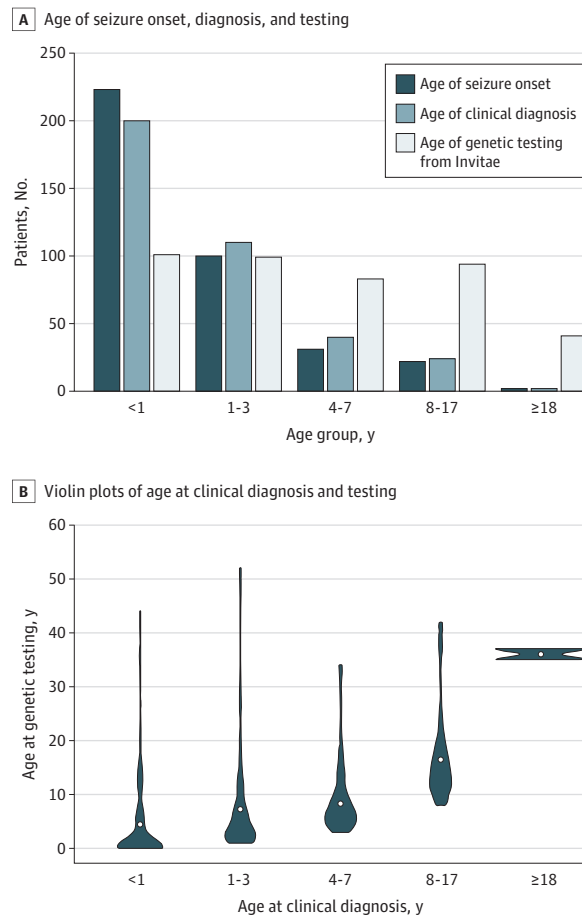
Sixteen patients had recommended dietary changes (3, ketogenic diet; 1, modified Atkins diet; 12, not specified); 11 of 16 also had additional clinical management changes. Of 12 patients with sufficient follow-up to report on outcomes (*KCNT1*, *SCN1A*, *SCN8A*, *SLC2A1*), 8 had additional management changes. Nine patients (75.0%) reported improved seizure control, and 3 patients (25.0%) reported worsening seizures.

The association of age at diagnosis and age at time of testing on patient outcomes was also assessed. Seizure frequency decreased regardless of whether the patients were children (163, aged <18 years) or adults (12, aged ≥18 years) when clinical changes were made (eFigure 4 in the Supplement). In total, 41 patients were clinically diagnosed with epilepsy before the age of 3 years and experienced a substantial delay (of at least 10 years) before genetic testing provided a definitive diagnosis; 19 patients (46.3%) had their clinical management adjusted. Among 15 patients with follow-up information, 9 (60.0%) experienced better seizure control, and none experienced a deterioration in their seizure control.

A small number of patients had reported worsening of outcomes, including deterioration of clinical signs (20 [12.0%]), increase in seizures (6 [3.6%]), or adverse medication effects (3 [1.8%]). Among patients with diagnostic findings in genes that were most common to have outcomes reported, negative outcome rates after treatment changes were highest in *STXBPI* (2 of 7 [28.6%]) and *PCDH19* (1 of 7 [14.3%]).

Discussion

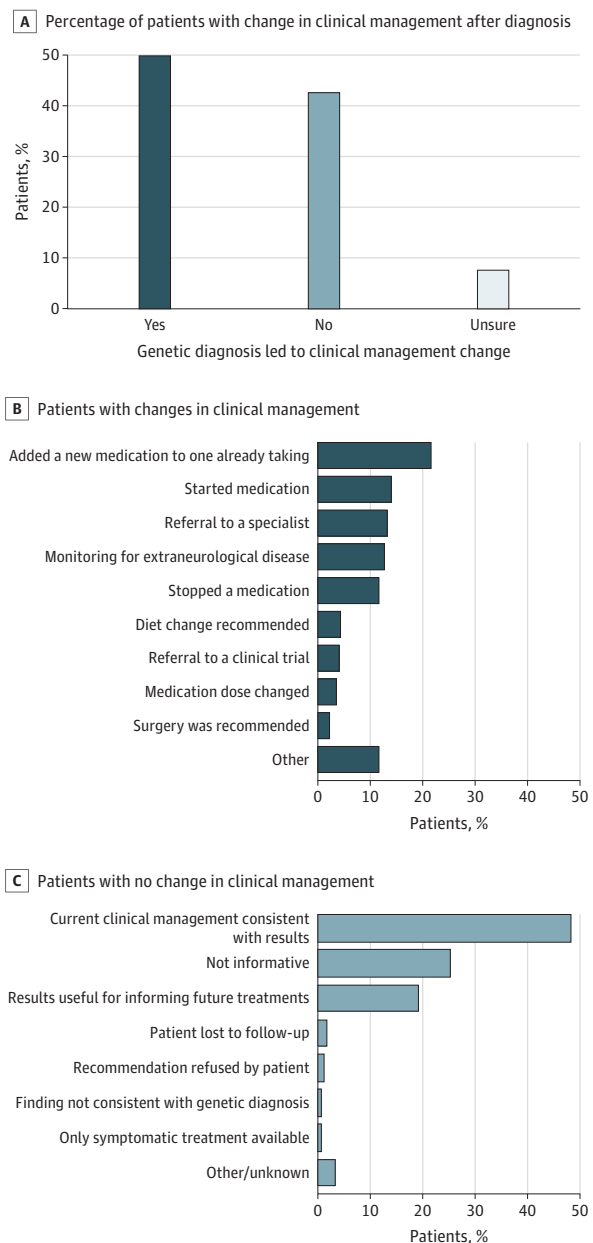
In this large, retrospective, real-world, international cross-sectional analysis, we found that a definitive genetic diagnosis was associated with changes in clinical management in approximately half the patients with epilepsy, consistent with previous reports.^{6,15} Although these studies used panel testing, an analysis of diagnostic findings for patients with

Figure 1. Age When Seizures Began, at Clinical Diagnosis, and at Time of Genetic Testing

A, Age at seizure initiation and age of clinical diagnosis were available if respondents indicated that the reason for testing was a clinical presentation of epilepsy. Age was unknown or not applicable for seizure onset ($n = 40$) and clinical diagnosis ($n = 42$). B, Violin plots reporting the difference between age at clinical diagnosis and age at time of genetic testing.

epilepsy using exome sequencing reported that the majority of findings were in the same genes tested by panels,²¹ suggesting that the results from this report may be applicable to other comprehensive genetic testing modalities for epilepsy. In this study, the majority of patients with management changes was associated with a consequent reduction or elimination of seizures. Among the other half of patients, for whom clinical management was not changed, HCPs reported that genetic test results would have been beneficial, but treatment was already consistent with the gene finding (48.3%) or that they could be informative in future clinical decision-making (44.3%). Strikingly, these reasons account for more than 90% of patients without changes to their clinical management, suggesting that the genetic diagnoses were still informative.

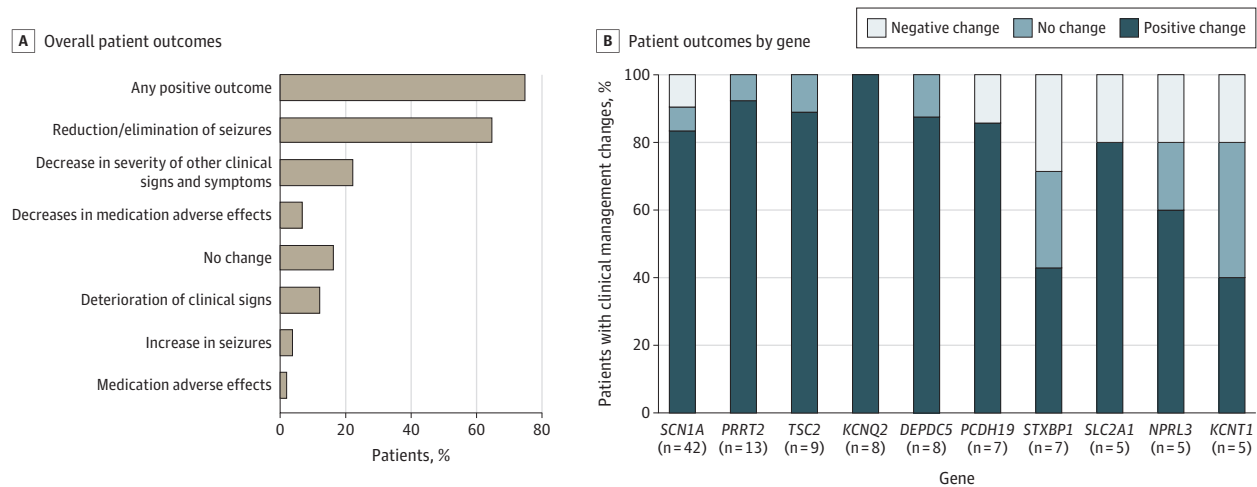
Genetic testing in epilepsy has additionally demonstrated benefits beyond informing diagnoses and improving clinical management. It can clarify diagnostic uncertainty (eg, when diagnostic criteria are unclear), especially in young children

Figure 2. Reported Clinical Actions After a Definitive Genetic Diagnosis

A, Respondents reported whether the genetic finding influenced a change in clinical management of the patient. B, Those who indicated "yes" selected all of the changes that were implemented or recommended (a patient could have >1 recommendation reported and is counted in each recommendation category). C, Those who indicated "no" reported the reason best describing why no changes were made.

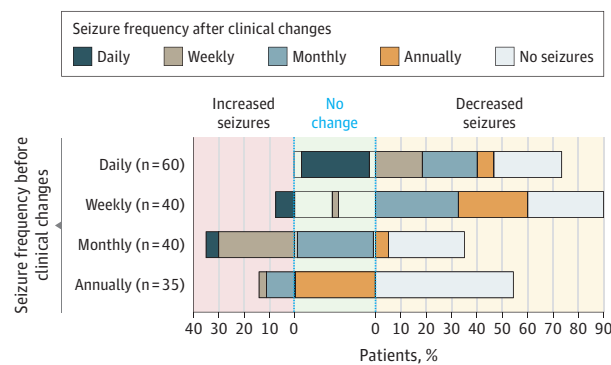
such as infants with Dravet syndrome.²² When genetic testing was used as a first-line tool for epilepsy, time to diagnosis decreased by 98%, and health care costs decreased by 70%.²³ Further, well-controlled seizures result in reduced average annual overall health care costs for all types of seizures (\$23 238 in 2007 to \$13 839 in 2009) and improved quality of life compared with uncontrolled seizures.²⁴⁻²⁶ This highlights potential annual savings in care of \$9399, inflation-adjusted to

Figure 3. Patient Outcomes



A, Overall patient outcomes after treatment changes were reported in question 13 of the case report form (eMethods in the Supplement). B, Patient outcomes after treatment changes were grouped according to positive outcomes, no change in outcomes, or negative outcomes and analyzed by the gene with diagnostic findings. Outcomes associated with the 11 genes with the highest frequency of diagnostic findings with reported follow-up after treatment changes are shown here. Outcomes for all genes with diagnostic findings that had clinical management changes reported and outcomes available are summarized in eTable 3 in the Supplement.

Figure 4. Changes in Seizure Frequency After Changes in Clinical Management



Individuals were grouped by their initial reported seizure frequency (daily, weekly, monthly, annually, or no seizures) before genetic testing and treatment changes on the y-axis, based on health care professional-reported responses to question 9 from the case report form (CRF). The reported seizure frequencies after treatment changes are represented on the x-axis, based on health care professional-reported responses to question 20 from the CRF. Only individuals who had a response provided for both pretreatment and posttreatment were included in this analysis.

\$11 644 in 2021, that might be realized if an accurate diagnosis leads to a change in treatment that controls seizures.²⁵ These observations, together with the finding that genetic testing for epilepsy is a cost-effective strategy in patients without an etiology,²⁷ demonstrate the benefits of standardizing the use of genetic testing for epilepsy.

Though historically limited to patients with a high index of suspicion due to cost and other barriers,²⁸⁻³¹ genetic testing is now far more accessible due to advances in DNA sequencing technologies. Although genetic testing for epilepsy

is not yet standard of care, some professional societies have recently published guidelines that advocate genetic testing after other types of diagnostic tests and referrals to specialists.¹⁰ The paucity of evidence demonstrating direct clinical benefit from genetic testing has precluded the development of explicit guidance for clinicians to routinely use genetic testing in the diagnosis and management of individuals with epilepsy. Data from this study may inform more extensive, case-controlled, prospective interventional studies to determine precision therapies based on the genetic etiology of a patient's seizures.

Beneficial outcomes after genetic testing were observed in patients of all ages in this study. Many (72 patients) were reported to be seizure free after management changes based on questions 19 or 20, whereas some of these individuals had genetic findings associated with self-limiting seizures (eg, *PRRT2*), others had findings in which the management change likely contributed to better seizure control (eg, γ -aminobutyric acid modulator for *TSC2*; sodium channel blockers for *SCN2A*; pyridoxine for *ALDH7A1*) (eTable 5 in the Supplement). Although a causal relationship could not be established based on the data reported here due to limitations of the survey design, the findings do suggest that a positive genetic test result may inform treatment decisions that are directly associated with patient outcomes. A reduction in seizures was also observed regardless of age, demonstrating the lifelong association of a genetic diagnosis for treatment decisions and subsequent outcomes. It is increasingly clear that genetic testing provides necessary information to confirm clinical diagnoses and that early use in the diagnostic journey may be associated with management and outcomes.

Whereas precision medicine in oncology has advanced rapidly, making clinical trials and genetics-informed treatment available to patients with cancer, a similar transformation in

rare hereditary diseases is still at its early stages. The number of genetics-informed approaches to treating epilepsy is limited, as most antiseizure medications are prescribed based on seizure type.¹⁸ However, an understanding of the underlying genetic etiology of a patient's seizure disorder can inform the selection of the best antiseizure medication based on its mechanism of action.³² The first uses of precision medicine for epilepsy were diet modifications for seizures caused by biochemical defects,³³⁻³⁸ and these modifications were associated with positive outcomes in most patients. Recent advances in precision medicine based on specific genetic etiologies, including enzyme replacement therapies and other types of gene or gene-product targeted therapies, are now available or in clinical trials for individuals diagnosed with *CLN2* Batten disease, Dravet syndrome, spinal muscular atrophy, Duchenne muscular dystrophy, and sickle cell disease.³⁹⁻⁴⁷ As additional gene-specific therapies become available for epilepsy, genetic testing will be increasingly necessary to quickly identify those who may benefit from them.

Limitations

Retrospective CRF-based studies pose certain limitations. The responding HCPs may or may not have been the primary HCP managing patient care. Another concern is ascertainment bias, in which HCPs could have been more likely to respond if they had patients with changes in management or with positive clinical outcomes. Although ascertainment bias cannot be ruled out, we have some reassurance that our findings could be representative because the response rate was high among HCPs who had more than 1 eligible patient, and the characteristics between the study and nonresponder cohorts, including the representation of diagnostic genes with established clinical management changes, were similar. Another limitation is the varying time between genetic testing and CRF completion, resulting in limited or no follow-up information for some pa-

tients. The design of the CRF only allowed for collection of clinical management changes and outcomes at a single time point, prohibiting deeper analysis of whether specific clinical management changes occurred at once or over the course of the follow-up period and whether these changes were directly linked to outcomes. For some disorders, such as those associated with *PCDH19* and *STXBPI*, there is a natural worsening or improvement of seizures through the natural history of that disease and/or a lack of reported best practices; therefore, we should be cautious when interpreting causality for these gene-specific findings. Lastly, the CRF design precluded the ability to compare outcomes with control cohorts, such as patients who had a diagnostic genetic finding but no clinical management changes or patients without genetic testing who were treated based on standard clinical practices. Future studies that collect and compare outcomes in these cohorts may provide additional clarity on the benefits of genetic testing.

Conclusions

Based on this large cross-sectional study of clinician-reported outcomes in patients with epilepsy, our findings address a long-standing question about the clinical benefits of genetic testing for epilepsy. Just as clinical trials and case-controlled studies were designed more than 20 years ago to assess the safety and efficacy of early epilepsy treatments based on seizure type, renewed efforts should focus on understanding how current and emerging therapies can improve patient outcomes based on the known genetic etiology of a patient's disease. The data from our study suggest the development of recommendations related to the use of genetic testing in the clinical evaluation of all individuals with epilepsy to potentially guide clinical decision-making, improve patient outcomes, and save health care dollars.

ARTICLE INFORMATION

Accepted for Publication: August 5, 2022.

Published Online: October 31, 2022.
doi:10.1001/jamaneurol.2022.3651

Open Access: This is an open access article distributed under the terms of the [CC-BY-NC-ND License](https://creativecommons.org/licenses/by-nc-nd/4.0/). © 2022 McKnight D et al. *JAMA Neurology*.

Author Affiliations: Invitae, San Francisco, California (McKnight, Morales, Hatchell, Bristow, Esplin, Moretz, Nussbaum, Aradhya); Division of Pediatric Neurology, Department of Pediatrics, University of Utah School of Medicine, Salt Lake City (Bonkowsky); Center for Personalized Medicine, Primary Children's Hospital, Salt Lake City, Utah (Bonkowsky); Jane and John Justin Neuroscience Center, Cook Children's Medical Center, Fort Worth, Texas (Perry); Department of Neurology, Northwestern University—Feinberg School of Medicine, Chicago, Illinois (Berg); COMBINEDBrain, Brentwood, Tennessee (Berg); Section of Neurology, Department of Internal Medicine, University of Manitoba, Winnipeg, Manitoba, Canada (Borlot); Alberta Children's Hospital Research Institute, Cumming School of Medicine, University of Calgary, Calgary, Alberta, Canada (Borlot); Children's Hospital Colorado,

Aurora (Angione); Department of Pediatrics, University of Colorado School of Medicine, Aurora (Angione); Clinical Integral de Epilepsia, Facultad de Medicina, Universidad Finis Terrae, Santiago, Chile (Rios-Pohl).

The ELEVIATE Consortium: Chad R.

Haldeman-Englert, MD; Rebecca J. Levy, MD, PhD; Venu G. Parachuri, MD; Guillermo Lay-Son, MD, MSc; David J. Dávila-Ortiz de Montellano, MD, PhD; Miguel Angel Ramirez-Garcia, MD, MSc; Edmar O. Benítez Alonso, MD; Julie Ziobro, MD, PhD; Adela Chirita-Emandi, MD, PhD; Temis M. Felix, MD, PhD; Dianne Kulasa-Luke, MS, APRN-CNP, PPNP-BC; Andre Megarbane, MD, PhD; Shefali Karkare, MD; Sarah L. Chagnon, MD; Jennifer B. Humberson, MD; Melissa J. Assaf, DNP, CPNP-PC, APN-Genetics; Sebastian Silva, MD; Katherine Zorollo, MD; Oksana Boyarchuk, MD, PhD; Gary R. Nelson, MD; Rachel Palmquist, MS; Katherine C. Hammond, MD; Sean T. Hwang, MD; Susan B. Boutlier, MD; Melinda Nolan, MBBS; Kaitlin Y. Batley, MD; Devraj Chavda, MD; Carlos Alberto Reyes-Silva, MD; Oleksandr Miroshnikov, PhD, MD; Britton Zuccarelli, MD; Louise Amlic-Wolf, MS; James W. Wheeler, BScPharm, MD; Syndy Seinfeld, DO; Manoj Kanhangad, MBBS, MD; Jeremy L. Freeman, MBBS; Susana Monroy-Santoyo, MD; Natalia

Rodriguez-Vazquez, MD; Monique M. Ryan, MMed, BS; Michelle Machie, MD; Patricio Guerra, MD, MSc; Muhammad Jawad Hassan, PhD; Meghan S. Candee, MD, MS; Caleb P. Bupp, MD; Kristen L. Park, MD; Eric Muller II, MD, PhD; Pamela Lupo, MD; Robert C. Pedersen, MD; Amir M. Arain, MD; Andrea Murphy, FNP; Krista Schatz, MS; Weiyi Mu, ScM; Paige M. Kalika, DO; Lautaro Plaza, MD, PhD; Marissa A. Kellogg, MD, MPH; Evelyn G. Lora, MD; Robert P. Carson, MD, PhD; Victoria Svystilnyk, PhD; Viviana Venegas, MD; Rebecca R. Luke, DO; Huiyuan Jiang, MD, PhD; Tetiana Stetsenko, PhD; Milagros M. Dueñas-Roque, MD; Joseph Trasmonte, MD; Rebecca J. Burke, MD, PhD; Anna C.E. Hurst, MD; Douglas M. Smith, MD; Lauren J. Massingham, MD; Laura Pisani, MD; Carrie E. Costin, MD; Betsy Ostrander, MD; Francis M. Filloux, MD; Amitha L. Ananth, MD; Ismail S. Mohamed, MD; Alla Nechai, PhD; Jasmin M. Dao, MD, PhD; Michael C. Fahey, MBBS, PhD; Ermal Aliu, MD; Stephen Falchek, MD; Craig A. Press, MD, PhD; Lauren Treat, MD; Krista Eschbach, MD; Angela Starks, MPH, MSN, CPNP-AC; Ryan Kammeyer, MD; Joshua J. Bear, MD, MA; Mona Jacobson, MSN, CPNP; Veronika Chernuha, MD; Bailey Meibos, BS; Kristen Wong, MS; Matthew T. Sweney, MD, MS; A. Chris Espinoza, MD; Colin B. Van Orman, MD; Arie Weinstock, MD;

Ashutosh Kumar, MD; Claudia Soler-Alfonso, MD; Danielle A. Nolan, MD; Muhammad Raza, MBBS; Miguel David Rojas Carrion, BS; Geetha Chari, MD; Eric D. Marsh, MD, PhD; Yael Shiloh-Malawsky, MD; Sumit Parikh, MD; Ernesto Gonzalez-Giraldo, MD; Stephen Fulton, MD; Yoshimi Sogawa, MD; Kaitlyn Burns, MS; Myroslava Malets, MD, PhD; Johnny David Montiel Blanco, MD; Christa W. Habela, MD, PhD; Carey A. Wilson, MD; Guillermo G. Guzmán, MD; Mariia Pavliuk, MD.

Affiliations of The ELEVIATE Consortium: Division of Pediatric Neurology, Department of Pediatrics, University of Utah School of Medicine, Salt Lake City (Nelson, Palmquist, Candee, Ostrander, Filloux, Wong, Sweny, Espinoza, Van Orman, Wilson); Jane and John Justin Neuroscience Center, Cook Children's Medical Center, Fort Worth, Texas (Luke); Children's Hospital Colorado, Aurora (Park, Press, Treat, Eschbach, Starks, Kammeyer, Bear, Jacobson); Department of Pediatrics, University of Colorado School of Medicine, Aurora (Park, Press, Treat, Eschbach, Starks, Kammeyer, Bear, Jacobson); Mission Fullerton Genetics Center, Asheville, North Carolina (Haldeman-Englert); Division of Medical Genetics, Lucile Packard Children's Hospital at Stanford University, Stanford, California (Levy); Division of Child Neurology, Lucile Packard Children's Hospital at Stanford University, Stanford, California (Levy); Kaiser Permanente, Portland, Oregon (Parachuri); Genetic Unit, Pediatrics Division, Faculty of Medicine, Pontificia Universidad Católica de Chile, Santiago, Chile (Lay-Son); Genetics Department, National Institute of Neurology and Neurosurgery, "Manuel Velasco Suárez," Mexico City, Mexico (de Montellano, Ramirez-Garcia, Benítez Alonso); Department of Pediatrics, University of Michigan, Ann Arbor (Ziobro); Genetic Discipline, Center of Genomic Medicine, University of Medicine and Pharmacy "Victor Babes" Timisoara, Timis, Romania (Chirita-Emandi); Regional Center of Medical Genetics Timis, Clinical Emergency Hospital for Children "Louis Turcanu" Timisoara, Timis, Romania (Chirita-Emandi); Medical Genetics Service, Hospital de Clínicas de Porto Alegre, Porto Alegre, Brazil (Felix); NeuroDevelopmental Science Center, Akron Children's Hospital, Akron, Ohio (Kulasa-Luke); Department of Human Genetics, Gilbert and Rose-Marie Chagoury School of Medicine, Lebanese American University, Byblos, Lebanon (Megarbane); Institut Jerome Lejeune, Paris, France (Megarbane); Cohen Children's Medical Center, Queens, New York (Karkare); Children's Hospital of the King's Daughters, Norfolk, Virginia (Chagnon); University of Virginia Pediatric Genetics and Metabolism, Charlottesville, Virginia (Humberson); Banner Children's Neurology—Thunderbird, Glendale, Arizona (Assaf); Child Neurology Service, Hospital de Puerto Montt, Puerto Montt, Chile (Silva); University of Florida—Jacksonville, Jacksonville (Zarrol); I.Horbachevsky Ternopil National Medical University, Ternopil, Ukraine (Boyarchuk); Department of Pediatric Neurology, University of Alabama at Birmingham, Birmingham (Hammond, Ananth, Mohamed); Zucker School of Medicine, Hofstra Northwell, Hempstead, New York (Hwang, Pisani); ECU Physician Internal Medicine Pediatric Neurology, Greenville, North Carolina (Boutlier); Starship Child Health, Auckland, New Zealand (M. Nolan); Department of Pediatrics and Neurology, UT Southwestern, Dallas, Texas (Batley, Machie); SUNY Downstate Health Sciences University, Brooklyn,

New York (Chavda, Chari); Facultad de Ciencias de la Salud, Universidad de los Hemisferios, Quito, Ecuador (Reyes-Silva); Institute of Pediatrics, Obstetrics and Gynecology, Kyiv, Ukraine (Miroshnikov); University of Kansas School of Medicine—Salina, Salina (Zuccarelli); Nemours Children's Hospital, Wilmington, Delaware (Amalie-Wolf, Falchek); Pediatric Neurology, University of Tennessee Health Science Center, Memphis (Wheless, Fulton); Le Bonheur Comprehensive Epilepsy Program & Neuroscience Institute, Le Bonheur Children's Hospital, Memphis, Tennessee (Wheless, Fulton); Joe DiMaggio Children's Hospital, Hollywood, Florida (Seinfeld); Department of Paediatrics, Monash University, Clayton, Australia (Kanhgand, Fahey); The Royal Children's Hospital Melbourne, Melbourne, Australia (Freeman, Ryan); Instituto Nacional de Pediatría/Centro Medico ABC, Mexico City, Mexico (Monroy-Santoyo); University of Puerto Rico, Medical Sciences Campus, San Juan, Puerto Rico (Rodriguez-Vazquez); Murdoch Children's Research Institute, Melbourne, Australia (Ryan); University of Melbourne, Melbourne, Australia (Ryan); Universidad San Sebastián, Department of Pediatrics, Medicine School, Patagonia Campus, Puerto Montt, Chile (Guerra); Department of Biological Sciences, National University of Medical Sciences, Rawalpindi, Pakistan (Hassan); Spectrum Health, West Michigan Helen DeVos Children's Hospital, Grand Rapids, Michigan (Bupp); Department of Neurology, University of Colorado School of Medicine, Aurora (Park, Press, Treat, Eschbach, Starks, Kammeyer, Bear, Jacobson); Clinical Genetics, Stanford Children's Health Specialty Services, San Francisco, California (Muller II); Division of Neurology, Department of Pediatrics, University of Texas Medical Branch, League City (Lupo); Hawaii Permanente Medical Group, Honolulu (Pedersen); Division of Epilepsy, Department of Neurology, University of Utah School of Medicine, Salt Lake City (Arain); Mary Bird Perkins Cancer Center, Baton Rouge, Louisiana (Murphy); Johns Hopkins University, Baltimore, Maryland (Schatz, Mu, Habela); University of Miami, Miami, Florida (Kalika); Hospital Materno Perinatal "Mónica Pretelini Sáenz," Toluca, México (Plaza); Oregon Health & Science University, Portland (Kellogg); Dominican Neurological and Neurosurgical Society, Santo Domingo, Dominican Republic (Lora); Vanderbilt University Medical Center, Nashville, Tennessee (Carson); Shupyk National Healthcare University of Ukraine, Kyiv, Ukraine (Svystilnyk); Clínica Alemana de Santiago, Universidad del Desarrollo, Pediatric Neurology Unit, Santiago, Chile (Venegas); Nationwide Children's Hospital, Toledo, Ohio (Jiang); Brain Stimulation Center, Kyiv, Ukraine (Stetsenko); Hospital Nacional Edgardo Rebagliati Martins—EsSalud, Lima, Perú (Dueñas-Roque); Atrium Health Navicent, Macon, Georgia (Trasmonte); Division of Medical Genetics, Department of Pediatrics, West Virginia University School of Medicine, Morgantown (Burke); Division of Neonatology, Department of Pediatrics, West Virginia University School of Medicine, Morgantown (Burke); Department of Genetics, University of Alabama at Birmingham, Birmingham (Hurst); Minnesota Epilepsy Group, St Paul (Smith); Hasbro Children's Hospital, Providence, Rhode Island (Massingham); Alpert Medical School, Brown University, Providence, Rhode Island (Massingham); Northwell Health, Medical Genetics, Great Neck, New York (Pisani);

Genetic Center, Akron Children's Hospital, Akron, Ohio (Costin); Neurology Department, Kiev City Children Clinical Hospital No. 1, Kyiv City, Ukraine (Nechai); Adult and Child Neurology Medical Associates, Long Beach, California (Dao); Miller Children's Hospital, Long Beach, California (Dao); Department of Genetics, Penn State Health Milton S. Hershey Medical Center, Hershey, Pennsylvania (Aliu); Thomas Jefferson University, Philadelphia, Pennsylvania (Falchek); Pediatric Neurology Institute, "Dana-Dwek" Children's Hospital, Tel Aviv Sourasky Medical Center, Tel Aviv, Israel (Chernuha); University of Utah, Salt Lake City (Meibos); Division of Child Neurology, Department of Neurology, University at Buffalo, Buffalo, New York (Weinstock); Oishei Children's Hospital, Buffalo, New York (Weinstock); Department of Pediatrics and Neurology, Penn State Health Milton S. Hershey Medical Center, Hershey, Pennsylvania (Kumar); Department of Molecular and Human Genetics, Baylor College of Medicine, Houston, Texas (Soler-Alfonso); Pediatric Epilepsy, Beaumont Children's, Royal Oak, Michigan (D. A. Nolan); Nishtar Medical University, Multan, Punjab, Pakistan (Raza); Alejandro Mann Hospital Complex, Guayaquil, Ecuador (Rojas Carrion); Kings County Hospital Center, Brooklyn, New York (Chari); Division of Child Neurology, Departments of Neurology and Pediatrics, Children's Hospital of Philadelphia, Philadelphia, Pennsylvania (Marsh); University of Pennsylvania Perelman School of Medicine, Philadelphia (Marsh); University of North Carolina at Chapel Hill, Chapel Hill (Shiloh-Malawsky); Neurogenetics, Cleveland Clinic, Cleveland, Ohio (Parikh); University of California—San Francisco, San Francisco (Gonzalez-Giraldo); UPMC Children's Hospital of Pittsburgh, Pittsburgh, Pennsylvania (Sogawa); Sanford Health, Sioux Falls, South Dakota (Burns); Uzhhorod National University, Uzhhorod, Ukraine (Malets); National Institute of Child Health, Lima, Perú (Montiel Blanco); Servicio Neuropsiquiatría Infantil, Hospital San Borja Arriarán, Santiago, Chile (Guzmán); Volyn Regional Hospital, Lutsk, Ukraine (Pavliuk).

Author Contributions: Drs McKnight and Hatchell had full access to all of the data in the study and take responsibility for the integrity of the data and the accuracy of the data analysis. Dr McKnight and Ms Morales contributed equally to this work. *Concept and design:* McKnight, Morales, Bonkowsky, Perry, Berg, Moretz, Aradhya, Benítez Alonso, Chagnon, Wheless, Arain, Kellogg, Ostrander, Ananth, Nechai, Falchek, Malets. *Acquisition, analysis, or interpretation of data:* McKnight, Morales, Hatchell, Bristow, Bonkowsky, Perry, Borlot, Esplin, Moretz, Angione, Rios-Pohl, Nussbaum, Aradhya, Haldeman-Englert, Levy, Parachuri, Lay-Son, Dávila-Ortiz de Montellano, Ramirez-Garcia, Ziobro, Chirita-Emandi, Felix, Kulasa-Luke, Megarbane, Karkare, Chagnon, Humberson, Assaf, Silva, Zarrol, Boyarchuk, Nelson, Palmquist, Hammond, Hwang, Boutlier, M. Nolan, Batley, Chavda, Reyes-Silva, Miroshnikov, Zuccarelli, Amalie-Wolf, Wheless, Seinfeld, Kanhgand, Freeman, Monroy-Santoyo, Rodriguez-Vazquez, Ryan, Machie, Guerra, Hassan, Candee, Bupp, Park, Muller, Lupo, Pedersen, Murphy, Schatz, Mu, Kalika, Plaza-Benhumea, Lora, Carson, Svystilnyk, Venegas, Luke, Jiang, Stetsenko, Massingham, Pisani, Costin, Ostrander, Filloux, Mohamed, Dao, Fahey, Aliu, Press, Treat, Eschbach,

Starks, Kammeyer, Bear, Jacobson, Chernuha, Meibos, Wong, Sweney, Espinoza, Van Orman, Weinstock, Kumar, Soler-Alfonso, D. Nolan, Raza, Rojas Carrion, Chari, Marsh, Shiloh-Malawsky, Parikh, Gonzalez-Giraldo, Fulton, Sogawa, Burns, Montiel Blanco, Habela, Wilson, Guzmán, Pavliuk. *Drafting of the manuscript*: McKnight, Bristow, Bonkowsky, Moretz, Lay-Son, Kulasa-Luke, Silva, Chavda, Wheless, Rodriguez-Vazquez, Guerra, Arain, Kalika, Dao, Meibos, Wilson, Pavliuk. *Critical revision of the manuscript for important intellectual content*: McKnight, Morales, Hatchell, Bristow, Bonkowsky, Perry, Berg, Borlot, Esplin, Moretz, Angione, Ríos-Pohl, Nussbaum, Aradhya, Haldeman-Englert, Levy, Parachuri, Dávila-Ortiz de Montellano, Ramirez-Garcia, Benítez Alonso, Ziobro, Chirita-Emandi, Felix, Megarbane, Karkare, Chagnon, Humberson, Assaf, Silva, Zarroli, Boyarchuk, Nelson, Palmquist, Hammond, Hwang, Boutlier, M. Nolan, Batley, Reyes-Silva, Miroshnikov, Zuccarelli, Amlie-Wolf, Wheless, Seinfeld, Kanhangad, Freeman, Monroy-Santoyo, Ryan, Machie, Hassan, Candee, Bupp, Park, Muller, Lupo, Pedersen, Murphy, Schatz, Mu, Plaza-Benhumea, Kellogg, Lora, Carson, Svystilnyk, Venegas, Luke, Jiang, Stetsenko, Dueñas-Roque, Trasmonte, Burke, Hurst, Smith, Massingham, Pisani, Costin, Ostrander, Filloux, Ananth, Mohamed, Nechai, Fahey, Aliu, Falchek, Press, Treat, Eschbach, Starks, Kammeyer, Bear, Jacobson, Chernuha, Wong, Sweney, Espinoza, Van Orman, Weinstock, Kumar, Soler-Alfonso, D. Nolan, Raza, Rojas Carrion, Chari, Marsh, Shiloh-Malawsky, Parikh, Gonzalez-Giraldo, Fulton, Sogawa, Burns, Malets, Montiel Blanco, Habela, Guzmán, Pavliuk. *Statistical analysis*: McKnight, Hatchell, Dávila-Ortiz de Montellano, Megarbane, Nechai. *Administrative, technical, or material support*: McKnight, Morales, Bristow, Bonkowsky, Moretz, Angione, Ríos-Pohl, Nussbaum, Aradhya, Lay-Son, Ramirez-Garcia, Benítez Alonso, Chirita-Emandi, Karkare, Chagnon, Humberson, Assaf, Silva, Nelson, Wheless, Seinfeld, Monroy-Santoyo, Ryan, Machie, Hassan, Lupo, Plaza-Benhumea, Kellogg, Carson, Venegas, Jiang, Dueñas-Roque, Trasmonte, Dao, Press, Meibos, Van Orman, Weinstock, Soler-Alfonso, Raza, Burns, Montiel Blanco, Habela. *Supervision*: Morales, Bonkowsky, Perry, Esplin, Nussbaum, Aradhya, Ramirez-Garcia, Benítez Alonso, Chagnon, Assaf, Zarroli, Batley, Chavda, Reyes-Silva, Zuccarelli, Wheless, Svystilnyk, Ostrander, D. Nolan, Malets, Guzmán.

Conflict of Interest Disclosures: Dr McKnight, Ms Morales, and Drs Hatchell, Bristow, Esplin, Moretz, Nussbaum, and Aradhya reported being employees and shareholders of Invitae. Dr Bonkowsky reported receiving consultant fees from Autobahn, Bluebird Bio, Calico, Denali Therapeutics, Enzyvant, Neurogene, Passage Bio, and Takeda; research funding from the National Institutes of Health (Clinical and Translational Science Awards Program and National Institute of Neurological Disorders and Stroke); being on the Board of Directors for wFluidix; being a shareholder in Orchard Therapeutics; and receiving royalties from Manson Publishing and BioFire (spouse). Dr Perry reported receiving safety monitoring committee fees from Stoke Therapeutics; consulting fees from BioMarin, Encoded Therapeutics, Greenwich Biosciences, Neurelis, Stoke Therapeutics, Taysa, and Zogenix; speakers' bureau fees/advisory board fees from Zogenix and Bright Minds; research funds paid to Cook

Children's from Encoded Therapeutics, Greenwich Biosciences, Marinus, Ovid, Stoke Therapeutics, and Zogenix; speakers fees from nobelPharma; and advisory board fees from Eisai outside the submitted work. Dr Berg reported receiving speakers' fees from Biomarin and advisory panel fees from Neurocrin and Zogenix outside the submitted work. Dr Esplin reported being on the scientific advisory board of Taproot Health. Dr Nussbaum reported being a paid consultant for Pfizer Pharmaceuticals; a paid consultant and stockholder in Genome Medical and Maze Therapeutics; and advisor/consultant fees from Pfizer Pharmaceuticals during the conduct of the study. Dr Monroy-Santoyo reported receiving personal fees from Alnylam Pharmaceuticals, Ultragenyx Pharmaceutical, and Recordati Rare Diseases outside the submitted work. Dr Carson reported receiving grants from Angelman Syndrome Foundation outside the submitted work. Dr Smith reported receiving personal fees from UCB outside the submitted work. Dr Mohamed reported receiving grants from Marinus Pharmaceuticals outside the submitted work. Dr Press reported receiving personal fees from Marinus Pharmaceuticals outside the submitted work. Dr Eschbach reported being a site principal investigator for a clinical trial for UCB pharmaceuticals and Neurocrin Biosciences outside the submitted work; and being a NORSE Institute Medical Science advisory board member. Dr Kammeyer reported receiving personal fees from Genentech and Sanofi outside the submitted work. Dr Bear reported receiving consultant fees from Biomarin outside the submitted work. Dr Kumar reported receiving advisory board/speakers' bureau fees from PTC Therapeutics outside the submitted work. Dr Marsh reported being a site principal investigator from Stoke Therapeutics, Acadia Pharmaceuticals, Zogenix Pharmaceuticals, and Marinus Pharmaceuticals and personal fees from Medscape for recording an educational video outside the submitted work. No other disclosures were reported.

Funding/Support: This work was supported by Invitae.

Role of the Funder/Sponsor: The funder provided the salary and resources for the coauthors who were also employed by Invitae. Invitae, outside of coauthors, did not have any role in the design and conduct of the study; collection, management, analysis and interpretation of the data; preparation of and decision to submit the manuscript. Invitae legal and regulatory representatives did have review and approval of the manuscript prior to submission.

Additional Contributions: We thank all the clinicians who completed case report forms for patients included in the study. No one was financially compensated for their contribution.

Additional Information: The authors, including those listed under the ELEVATE Consortium banner, represent a subset of the clinicians who provided data and met the requirements for authorship.

REFERENCES

1. Borlot F, Regan BM, Bassett AS, Stavropoulos DJ, Andrade DM. Prevalence of pathogenic copy number variation in adults with pediatric-onset epilepsy and intellectual disability. *JAMA Neurol*. 2017;74(11):1301-1311. doi:10.1001/jamaneurol.2017.1775

2. Shellhaas RA, Wusthoff CJ, Tsuchida TN, et al. Neonatal Seizure Registry. Profile of neonatal epilepsies: characteristics of a prospective US cohort. *Neurology*. 2017;89(9):893-899. doi:10.1212/WNL.0000000000004284
3. Berg AT, Coryell J, Saneto RP, et al. Early-life epilepsies and the emerging role of genetic testing. *JAMA Pediatr*. 2017;171(9):863-871. doi:10.1001/jamapediatrics.2017.1743
4. Lindy AS, Stosser MB, Butler E, et al. Diagnostic outcomes for genetic testing of 70 genes in 8565 patients with epilepsy and neurodevelopmental disorders. *Epilepsia*. 2018;59(5):1062-1071. doi:10.1111/epi.14074
5. Borlot F, de Almeida BI, Combe SL, Andrade DM, Filloux FM, Myers KA. Clinical utility of multigene panel testing in adults with epilepsy and intellectual disability. *Epilepsia*. 2019;60(8):1661-1669. doi:10.1111/epi.16273
6. Truty R, Patil N, Sankar R, et al. Possible precision medicine implications from genetic testing using combined detection of sequence and intragenic copy number variants in a large cohort with childhood epilepsy. *Epilepsia Open*. 2019;4(3):397-408. doi:10.1002/epi4.12348
7. Johannesen KM, Nikanorova N, Marjanovic D, et al. Utility of genetic testing for therapeutic decision-making in adults with epilepsy. *Epilepsia*. 2020;61(6):1234-1239. doi:10.1111/epi.16533
8. Ottman R, Hirose S, Jain S, et al. Genetic testing in the epilepsies—report of the ILAE Genetics Commission. *Epilepsia*. 2010;51(4):655-670. doi:10.1111/j.1528-1167.2009.02429.x
9. Committee on Bioethics; Committee on Genetics, and; American College of Medical Genetics and; Genomics Social; Ethical; Legal Issues Committee. Ethical and policy issues in genetic testing and screening of children. *Pediatrics*. 2013;131(3):620-622. doi:10.1542/peds.2012-3680
10. Jain P, Andrade D, Donner E, et al. Development of criteria for epilepsy genetic testing in Ontario, Canada. *Can J Neurol Sci*. 2019;46(1):7-13. doi:10.1017/cjn.2018.341
11. Nabbut R, Kuchenbuch M. Impact of predictive, preventive and precision medicine strategies in epilepsy. *Nat Rev Neurol*. 2020;16(12):674-688. doi:10.1038/s41582-020-0409-4
12. Hoelz H, Herdl C, Gerstl L, et al. Impact on clinical decision-making of next-generation sequencing in pediatric epilepsy in a tertiary epilepsy referral center. *Clin EEG Neurosci*. 2020;51(1):61-69. doi:10.1177/1550059419876518
13. Balestrini S, Chiarello D, Gogou M, et al. Real-life survey of pitfalls and successes of precision medicine in genetic epilepsies. *J Neurol Neurosurg Psychiatry*. 2021;92(10):1044-1052. doi:10.1136/jnnp-2020-325932
14. Møller RS, Hammer TB, Rubboli G, Lemke JR, Johannesen KM. From next-generation sequencing to targeted treatment of nonacquired epilepsies. *Expert Rev Mol Diagn*. 2019;19(3):217-228. doi:10.1080/14737159.2019.1573144
15. McKnight D, Bristow SL, Truty RM, et al. Multigene panel testing in a large cohort of adults with epilepsy: diagnostic yield and clinically actionable genetic findings. *Neurol Genet*. 2021;8(1):e650. doi:10.1212/NXG.0000000000000650
16. Ream MA, Mikati MA. Clinical utility of genetic testing in pediatric drug-resistant epilepsy: a pilot

- study. *Epilepsy Behav.* 2014;37:241-248. doi:10.1016/j.yebeh.2014.06.018
17. Symonds JD, Zuberi SM, Johnson MR. Advances in epilepsy gene discovery and implications for epilepsy diagnosis and treatment. *Curr Opin Neurol.* 2017;30(2):193-199. doi:10.1097/WCO.0000000000000433
 18. Perucca E. Antiepileptic drugs: evolution of our knowledge and changes in drug trials. *Epileptic Disord.* 2019;21(4):319-329.
 19. Symonds JD, Zuberi SM, Stewart K, et al. Incidence and phenotypes of childhood-onset genetic epilepsies: a prospective population-based national cohort. *Brain.* 2019;142(8):2303-2318. doi:10.1093/brain/awz195
 20. von Elm E, Altman DG, Egger M, Pocock SJ, Gøtzsche PC, Vandenbroucke JP; STROBE Initiative. The Strengthening the Reporting of Observational Studies in Epidemiology (STROBE) statement: guidelines for reporting observational studies. *Lancet.* 2007;370(9596):1453-1457. doi:10.1016/S0140-6736(07)61602-X
 21. Snoeijs-Schouwenaars FM, van Ool JS, Verhoeven JS, et al. Diagnostic exome sequencing in 100 consecutive patients with both epilepsy and intellectual disability. *Epilepsia.* 2019;60(1):155-164. doi:10.1111/epi.14618
 22. Hattori J, Ouchida M, Ono J, et al. A screening test for the prediction of Dravet syndrome before 1 year of age. *Epilepsia.* 2008;49(4):626-633. doi:10.1111/j.1528-1167.2007.01475.x
 23. Oates S, Tang S, Rosch R, et al. Incorporating epilepsy genetics into clinical practice: a 360° evaluation. *NPJ Genom Med.* 2018;3:13. doi:10.1038/s41525-018-0052-9
 24. Harden CL, Maroof DA, Nikolov B, et al. The effect of seizure severity on quality of life in epilepsy. *Epilepsy Behav.* 2007;11(2):208-211. doi:10.1016/j.yebeh.2007.05.002
 25. Cramer JA, Wang ZJ, Chang E, et al. Health care utilization and costs in adults with stable and uncontrolled epilepsy. *Epilepsy Behav.* 2014;31:356-362. doi:10.1016/j.yebeh.2013.09.046
 26. Toledo M, Brandt C, Quarato PP, et al. Long-term safety, efficacy, and quality of life during adjunctive brivaracetam treatment in patients with uncontrolled epilepsy: an open-label follow-up trial. *Epilepsy Behav.* 2021;118:107897. doi:10.1016/j.yebeh.2021.107897
 27. Sánchez Fernández I, Loddenkemper T, Gaínza-Lein M, Sheidley BR, Poduri A. Diagnostic yield of genetic tests in epilepsy: a meta-analysis and cost-effectiveness study. *Neurology.* 2019;92(5):e418-e428. doi:10.1212/WNL.0000000000006850
 28. Klitzman R, Chung W, Marder K, et al. Attitudes and practices among internists concerning genetic testing. *J Genet Couns.* 2013;22(1):90-100. doi:10.1007/s10897-012-9504-z
 29. Ream MA, Patel AD. Obtaining genetic testing in pediatric epilepsy. *Epilepsia.* 2015;56(10):1505-1514. doi:10.1111/epi.13122
 30. Chambers CP, Echenique F, Saito K. Testing theories of financial decision-making. *Proc Natl Acad Sci U S A.* 2016;113(15):4003-4008. doi:10.1073/pnas.1517760113
 31. Kutscher EJ, Joshi SM, Patel AD, Hafeez B, Grinspan ZM. Barriers to genetic testing for pediatric Medicaid beneficiaries with epilepsy. *Pediatr Neurol.* 2017;73:28-35. doi:10.1016/j.pediatrneurol.2017.04.014
 32. Bayat A, Bayat M, Rubboli G, Møller RS. Epilepsy syndromes in the first year of life and usefulness of genetic testing for precision therapy. *Genes (Basel).* 2021;12(7):1051. doi:10.3390/genes12071051
 33. Lefevre F, Aronson N. Ketogenic diet for the treatment of refractory epilepsy in children: a systematic review of efficacy. *Pediatrics.* 2000;105(4):E46. doi:10.1542/peds.105.4.e46
 34. Bergqvist AGC, Schall JI, Gallagher PR, Cnaan A, Stallings VA. Fasting versus gradual initiation of the ketogenic diet: a prospective, randomized clinical trial of efficacy. *Epilepsia.* 2005;46(11):1810-1819. doi:10.1111/j.1528-1167.2005.00282.x
 35. Henderson CB, Filloux FM, Alder SC, Lyon JL, Caplin DA. Efficacy of the ketogenic diet as a treatment option for epilepsy: meta-analysis. *J Child Neurol.* 2006;21(3):193-198. doi:10.2310/7010.2006.00044
 36. Neal EG, Chaffe H, Schwartz RH, et al. The ketogenic diet for the treatment of childhood epilepsy: a randomised controlled trial. *Lancet Neurol.* 2008;7(6):500-506. doi:10.1016/S1474-4422(08)70092-9
 37. Levy RG, Cooper PN, Giri P. Ketogenic diet and other dietary treatments for epilepsy. *Cochrane Database Syst Rev.* 2012;(3):CD001903. doi:10.1002/14651858.CD001903.pub2
 38. Kossoff EH, Wang HS. Dietary therapies for epilepsy. *Biomed J.* 2013;36(1):2-8. doi:10.4103/2319-4170.107152
 39. Schulz A, Ajayi T, Specchio N, et al; CLN2 Study Group. Study of intraventricular cerliponase alfa for CLN2 disease. *N Engl J Med.* 2018;378(20):1898-1907. doi:10.1056/NEJMoa1712649
 40. Fortunato F, Rossi R, Falzarano MS, Ferlini A. Innovative therapeutic approaches for Duchenne muscular dystrophy. *J Clin Med.* 2021;10(4):820. doi:10.3390/jcm10040820
 41. Choi E, Koo T. CRISPR technologies for the treatment of Duchenne muscular dystrophy. *Mol Ther.* 2021;29(11):3179-3191. doi:10.1016/j.jymthe.2021.04.002
 42. Ataga KI, Kutlar A, Kanter J, et al. Crizanlizumab for the prevention of pain crises in sickle cell disease. *N Engl J Med.* 2017;376(5):429-439. doi:10.1056/NEJMoa1611770
 43. Niihara Y, Miller ST, Kanter J, et al; Investigators of the Phase 3 Trial of L-Glutamine in Sickle Cell Disease. A phase 3 trial of l-glutamine in sickle cell disease. *N Engl J Med.* 2018;379(3):226-235. doi:10.1056/NEJMoa1715971
 44. Vichinsky E, Hoppe CC, Ataga KI, et al; HOPE Trial Investigators. A Phase 3 randomized trial of voxelotor in sickle cell disease. *N Engl J Med.* 2019;381(6):509-519. doi:10.1056/NEJMoa1903212
 45. Mercuri E, Darras BT, Chiriboga CA, et al; CHERISH Study Group. Nusinersen vs sham control in later-onset spinal muscular atrophy. *N Engl J Med.* 2018;378(7):625-635. doi:10.1056/NEJMoa1710504
 46. Finkel RS, Mercuri E, Darras BT, et al; ENDEAR Study Group. Nusinersen vs sham control in infantile-onset spinal muscular atrophy. *N Engl J Med.* 2017;377(18):1723-1732. doi:10.1056/NEJMoa1702752
 47. An Open-Label Study to Investigate the Safety of Single and Multiple Ascending Doses in Children and Adolescents With Dravet Syndrome. ClinicalTrials identifier: NCT04442295. Updated March 4, 2022. Accessed January 7, 2022. <https://www.clinicaltrials.gov/ct2/show/NCT04442295>