

10-23-2020


Release and extraction of retained subfoveal perfluorocarbon liquid facilitated by subretinal BSS, vibration, and gravity: a case report.

Kosuke Takahashi
Okayama University Graduate School of Medicine

Shuhei Kimura
Okayama University Graduate School of Medicine

Mio Morizane Hosokawa
Okayama University Graduate School of Medicine

Yusuke Shiode
Okayama University Graduate School of Medicine
Follow this and additional works at: <https://jdc.jefferson.edu/willsfp>

 **Shinichi Doi** Ophthalmology Commons
Okayama University Graduate School of Medicine

[Let us know how access to this document benefits you](#)

See next page for additional authors

Recommended Citation

Takahashi, Kosuke; Kimura, Shuhei; Hosokawa, Mio Morizane; Shiode, Yusuke; Doi, Shinichiro; Matoba, Ryo; Kanzaki, Yuki; Yonekawa, Yoshihiro; and Morizane, Yuki, "Release and extraction of retained subfoveal perfluorocarbon liquid facilitated by subretinal BSS, vibration, and gravity: a case report." (2020). *Wills Eye Hospital Papers*. Paper 119.
<https://jdc.jefferson.edu/willsfp/119>

This Article is brought to you for free and open access by the Jefferson Digital Commons. The Jefferson Digital Commons is a service of Thomas Jefferson University's [Center for Teaching and Learning \(CTL\)](#). The Commons is a showcase for Jefferson books and journals, peer-reviewed scholarly publications, unique historical collections from the University archives, and teaching tools. The Jefferson Digital Commons allows researchers and interested readers anywhere in the world to learn about and keep up to date with Jefferson scholarship. This article has been accepted for inclusion in Wills Eye Hospital Papers by an authorized administrator of the Jefferson Digital Commons. For more information, please contact: JeffersonDigitalCommons@jefferson.edu.

Authors

Kosuke Takahashi, Shuhei Kimura, Mio Morizane Hosokawa, Yusuke Shiode, Shinichiro Doi, Ryo Matoba, Yuki Kanzaki, Yoshihiro Yonekawa, and Yuki Morizane

CASE REPORT

Open Access



Release and extraction of retained subfoveal perfluorocarbon liquid facilitated by subretinal BSS, vibration, and gravity: a case report

Kosuke Takahashi¹, Shuhei Kimura¹, Mio Morizane Hosokawa¹, Yusuke Shiode¹, Shinichiro Doi¹, Ryo Matoba¹, Yuki Kanzaki¹, Yoshihiro Yonekawa² and Yuki Morizane^{1*}

Abstract

Background: Perfluorocarbon liquid (PFCL) is an effective surgical adjuvant in performing vitrectomy for severe vitreoretinal pathologies such as proliferative vitreoretinopathy and giant retinal tears. However, subretinal retention of PFCL can occur postoperatively and retained PFCL causes severe visual disorders, particularly when PFCL was retained under the fovea. Although several procedures have been proposed for subfoveal PFCL removal, such as direct aspiration or submacular injection of balanced salt solution (BSS) to dislodge the subfoveal PFCL, the retinal damage associated with these procedures has been a major problem. Here, we report a case of subfoveal retention of PFCL for which we performed a novel surgical technique that attempts to minimize retinal damage.

Case presentation: A 69-year-old man presented with subfoveal retained PFCL after surgery for retinal detachment. To remove the retained PFCL, the internal limiting membrane overlying the subretinal injection site is first peeled to allow low-pressure (8 psi) transretinal BSS infusion, using a 41-gauge cannula, to slowly detach the macula. A small drainage retinotomy is created with the diathermy tip at the inferior position of the macular bleb, sized to be slightly wider than that of the PFCL droplet. The head of the bed is then raised, and the surgeon gently vibrates the patient's head to release the PFCL droplet to allow it to migrate inferiorly towards the drainage retinotomy. The bed is returned to the horizontal position, and the PFCL, now on the retinal surface, can be aspirated. The subfoveal PFCL is removed while minimizing iatrogenic foveal and macular damage. One month after PFCL removal, the foveal structure showed partial recovery on optical coherence tomography, and BCVA improved to 20/40.

Conclusion: Creating a macular bleb with low infusion pressure and using vibrational forces and gravity to migrate the PFCL towards a retinotomy can be considered as a relatively atraumatic technique to remove subfoveal retained PFCL.

Keywords: Case report, Perfluorocarbon, Retinal detachment, Subretinal injection, Vitreoretinal surgery

* Correspondence: moriza-y@okayama-u.ac.jp

¹Department of Ophthalmology, Okayama University Graduate School of Medicine, Dentistry and Pharmaceutical Sciences, 2-5-1 Shikata-cho Kita-ku, Okayama City, Okayama 700-8558, Japan

Full list of author information is available at the end of the article



© The Author(s). 2020 **Open Access** This article is licensed under a Creative Commons Attribution 4.0 International License, which permits use, sharing, adaptation, distribution and reproduction in any medium or format, as long as you give appropriate credit to the original author(s) and the source, provide a link to the Creative Commons licence, and indicate if changes were made. The images or other third party material in this article are included in the article's Creative Commons licence, unless indicated otherwise in a credit line to the material. If material is not included in the article's Creative Commons licence and your intended use is not permitted by statutory regulation or exceeds the permitted use, you will need to obtain permission directly from the copyright holder. To view a copy of this licence, visit <http://creativecommons.org/licenses/by/4.0/>. The Creative Commons Public Domain Dedication waiver (<http://creativecommons.org/publicdomain/zero/1.0/>) applies to the data made available in this article, unless otherwise stated in a credit line to the data.

Background

Perfluorocarbon liquid (PFCL) is an effective surgical adjuvant in performing vitrectomy for severe vitreoretinal pathologies such as proliferative vitreoretinopathy and giant retinal tears [1, 2]. However, subretinal retention of PFCL can occur in 1–11% of cases [3, 4]. There may be toxic effects on the retinal pigment epithelium (RPE) and photoreceptors, [5] and retained PFCL can be visually significant, particularly when loculated under the fovea [6].

Several procedures have been proposed for subfoveal PFCL removal, including direct aspiration by using canulas to puncture through the fovea [7]. This may lead to scotomas and complications such as macular hole, submacular hemorrhage, subfoveal choroidal neovascularization, and submacular fibrosis due to photoreceptor and RPE cell damage [7, 8]. Another reported technique utilizes submacular injection of balanced salt solution (BSS) to dislodge the subfoveal PFCL, with or without extraction of the PFCL [9, 10]. This is likely less traumatic compared to the former technique, but forceful submacular BSS injection can create macular holes and photoreceptor damage if the injection pressure is high [10–13]. Displacement of the subfoveal PFCL to the extrafoveal area without aspiration of the PFCL requires postoperative postural positioning, and the displaced PFCL may migrate back to the fovea [6].

An atraumatic procedure for subfoveal PFCL removal without the above limitations would therefore be beneficial. Herein, we describe a novel surgical technique for subfoveal PFCL removal that attempts to minimize photoreceptor and RPE damage.

Case presentation

Presentation, history, and the initial surgery for retinal detachment

A 69-year-old man presented with a temporal giant retinal tear in the left eye with a macula-involving retinal detachment. His best-corrected visual acuity (BCVA) was 20/160 (Fig. 1a). We performed 25-gauge pars plana vitrectomy with combined phacoemulsification. PFCL was used to flatten the retina, but there was residual subretinal fluid after PFCL removal, so a small drainage retinotomy was created outside the arcade vessel at 6 o'clock to drain the remaining fluid, and photocoagulation was performed, and 20% sulfur hexafluoride (SF₆) was used for tamponade.

The second surgery to remove subretinal PFCL droplets

On the first postoperative day, swept-source optical coherence tomography (OCT) obtained through the gas bubble showed subretinal PFCL droplets, one of which was retained under the fovea (Fig. 1b). We performed a second surgery to remove the retained PFCL 5 days later.

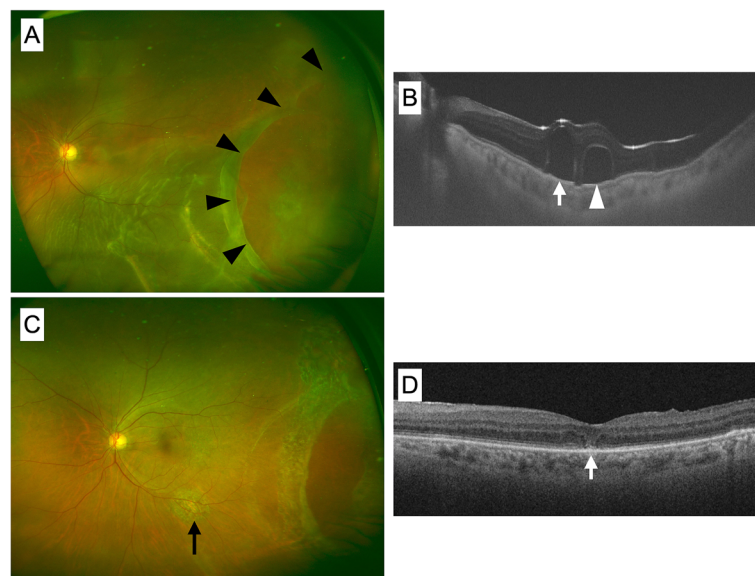


Fig. 1 Preoperative and postoperative color fundus images and swept source optical coherence tomography. **a** A preoperative color fundus image shows a retinal detachment with a temporal giant retinal tear (arrowheads). **b** Swept-source optical coherence tomography (OCT) B-scan images obtained under intraocular gas on postoperative day 1 shows subretinal retention of two perfluorocarbon liquid (PFCL) droplets. The droplet indicated by the arrow is located under the fovea; that indicated by the arrowhead is located in the parafoveal area. **c** Color fundus image obtained 1 month after PFCL removal. The retina is reattached. The arrow points to the drainage retinotomy created during the first surgery, which was used to extract the subretinal PFCL droplets to the retinal surface. **d** OCT B-scan image obtained 1 month after PFCL removal shows resolution of the subretinal PFCL. The outer retinal microstructure of the fovea is not completely restored, but visual acuity was 20/40 (arrow)

Four subretinal PFCL droplets were identified intraoperatively. Of these, two extrafoveal droplets were removed by direct aspiration with a 41-gauge cannula. For removal of the subfoveal and parafoveal PFCL, we created a macular detachment via subretinal BSS injection at 8 psi, such that the area of the detachment included both the PFCL droplets and the previous retinotomy, which was conveniently created at the inferior position during the first surgery. The head of the bed was elevated, and the patient's head was carefully vibrated for 10 s. The subfoveal PFCL released onto the retinal surface and was removed. Subsequently, we confirmed that the second, parafoveal, droplet was still subretinally retained by applying PFCL on the retinal surface to better delineate its spherical shape. The same maneuver was repeated, which released the second droplet. Fluid–air exchange, retinopexy, and air–20% SF₆ gas exchange were performed (see Additional file 1).

Post-operative recovery of the macula

One month after PFCL removal, the foveal structure showed partial recovery on OCT, and BCVA improved to 20/40 (Fig. 1d). OCT of the area of the macular bleb showed no anatomic damage to the photoreceptors and RPE (Fig. 2).

Detailed explanation of surgical technique for subfoveal PFCL removal

The first step is to create a submacular bleb with BSS. In order to minimize the injection pressure of the BSS to

avoid diffuse photoreceptor and RPE damage, the internal limiting membrane (ILM) at the subretinal injection site can be focally peeled before placement of the cannula (Fig. 3a, e) [11–13]. BSS is inserted into the Viscous Fluid Control system (VFC; Alcon Laboratories, Fort Worth, TX), which is connected to a 41-gauge cannula (MedOne, Sarasota, FL). The cannula is placed at the ILM opening, and foot pedal control is used to transfuse the BSS at a low injection pressure of 8 psi through the retina (without having to penetrate through), to create a submacular BSS bleb (Fig. 3b, f). By pre-peeling the ILM, the BSS can permeate through the neurosensory retina into the subretinal space, even without puncturing through with the cannula tip. The macular detachment should extend across the posterior pole beyond the arcade vessels, especially inferiorly. Subsequently, a small drainage retinotomy is created with a diameter slightly larger than that of the PFCL droplet at the inferior edge of the bleb, outside of the arcades (Fig. 3c, g). The infusion line is then clamped, and removed from the self-sealing cannula. All cannulas are inspected to be watertight. The head of the patient's bed is then raised from supine to upright position, while ensuring that vitrectomy unit cords and anesthesia-related apparatuses are not compromised. With the head now elevated, the height of the macular detachment inferior to the PFCL increases due to gravitational forces (Fig. 3h). The surgeon then carefully vibrates the patient's head manually for approximately 10 s to release the PFCL from the subfoveal position, which then finds its way out of the inferior drainage

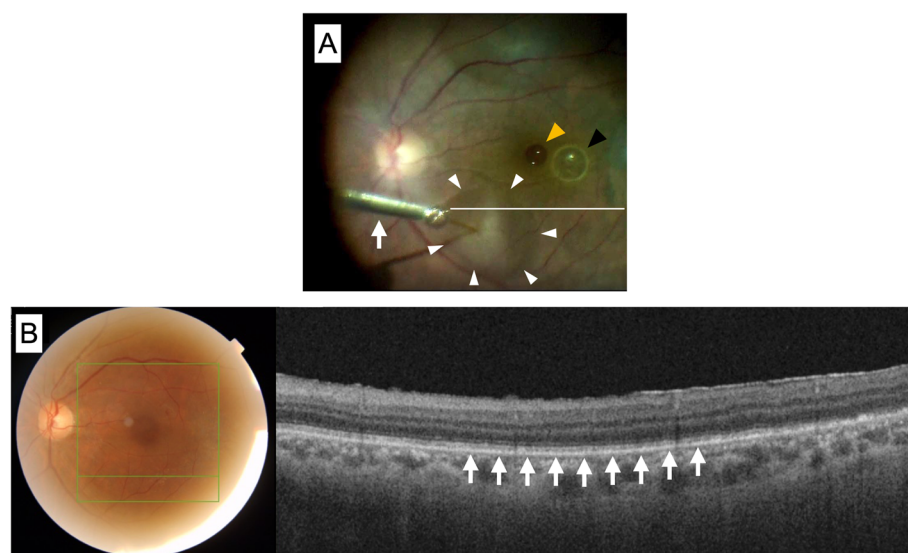


Fig. 2 Subretinal injection of balanced salt solution (BSS) and postoperative optical coherence tomography (OCT). **a** An intraoperative image demonstrating the initiation of subretinal infusion of BSS using a 41G cannula (arrow) (Additional file 1). The arrowheads indicate the border of the bleb. The white line corresponds to the OCT scan in **(b)**. The yellow and black arrowheads indicate the subfoveal and parafoveal PFCL droplets, respectively. **b** OCT image scanned at the horizontal line in Fig. **a**, 1 month after PFCL removal. The outer retinal structure is continuous (arrows)

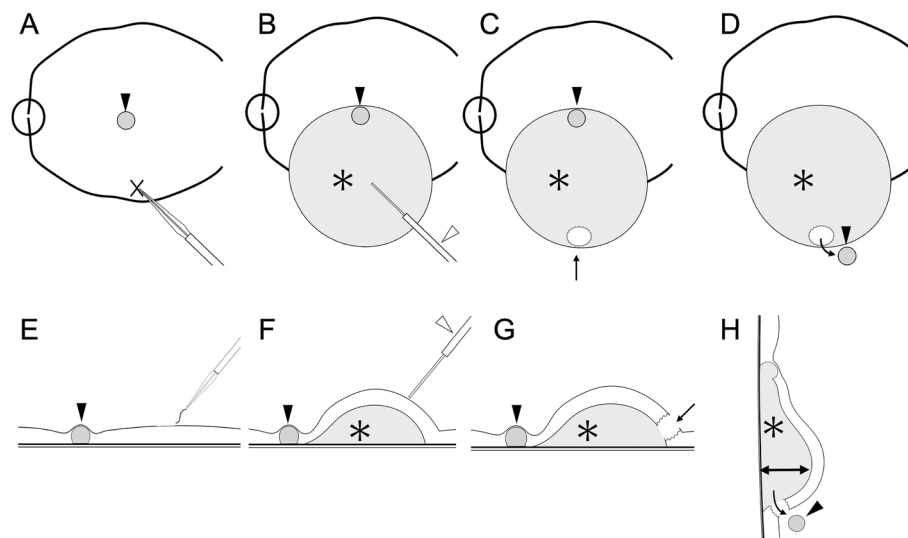


Fig. 3 Schematic of a novel surgical technique for subfoveal perfluorocarbon liquid (PFCL) removal. **e, f, g, and h** show vertical cross-sections of **a, b, c, and d**, respectively. The black arrowheads indicate the local of the PFCL droplet. **a** and **e** The internal limiting membrane at the site for subretinal injection of BSS (cross mark). **b** and **f** Subretinal bleb (asterisk) is induced by subretinal BSS injection using a 41-gauge cannula (white arrowhead) at a pressure of 8 psi. **c** and **g** A small drainage retinotomy (arrow) is created at the inferior end of the bleb (asterisk). **d** and **h** The patient's position is changed from supine to upright. When the patient is placed in the upright position, the subretinally injected BSS gathers inferiorly from gravity, while the height of the retinal detachment below the PFCL droplet increases (double headed arrow). Then, the head is vibrated by the surgeon to facilitate migration of the subfoveal PFCL to the retinal surface through the retinotomy.

retinotomy (Fig. 3d, h). The patient is returned to the supine position, and the PFCL droplet on the retinal surface is aspirated. This is followed by fluid–air exchange and photocoagulation around the drainage retinotomy. At the end of the surgery, air is replaced with 20% SF₆ gas (see Additional file 2).

Discussion and conclusions

We describe a new surgical technique to remove subfoveally retained PFCL, with the goal of minimizing theoretical iatrogenic effects to the foveal and macular outer retina. Several observations were made during this procedure.

In order to displace the PFCL droplets, we created a macular detachment with BSS and encountered two phenomena. First, although the macular detachment was easily created over the PFCL droplet in the parafoveal area, it could not be extended above the subfoveal droplet (Fig. 4a, b; Additional file 1). A possible reason is that the retinal tissue in contact with the PFCL droplets differed between the subfoveal and parafoveal droplets. As shown in Figs. 1 and 4, the parafoveal PFCL stays mostly within the outer retina, whereas the subfoveal PFCL is draped by very thin tissue [14]. The inner retinal layers are absent at the fovea, except Müller cell cones. Therefore, we speculate that the interface between the PFCL and thinner foveal tissue may be stronger than the extrafoveal photoreceptors. This adhesive force, whether it may be mechanical from the draping by the thin foveal

tissue, and/or a vacuum-like state from surface tension, prevented BSS from flowing above the subfoveal PFCL. On the other hand, there were no significant adhesive forces between the extrafoveal PFCL and outer retina, which permitted easy separation. To create macular detachments over subfoveal PFCL, the subretinal injection is required to be performed at a pressure so that the force of injected BSS flow becomes greater than the intraocular pressure multiplied by the area of adhesion between the subfoveal PFCL and fovea (Fig. 4i). The intraocular pressure can therefore be lowered to facilitate this step.

Second, the injection pressure (8 psi) alone failed in displacing both the subfoveal and parafoveal PFCL droplets. To release the droplets from the RPE, we utilized gravity and vibration to mobilize the subretinal PFCL (Fig. 4g, h; Additional files 1 and 2). To utilize gravity, just as the rotation of surgical table during vitrectomy for giant retinal tear, [15, 16] we thought that it was effective to change the patient's position from supine to upright by moving the head of the patient's bed. When moving the head of the patient's bed, care should be taken to ensure that infusion and anesthesia lines are secure and the patient should be strapped securely depending on the method of anesthesia and the patient's physical attributes. The vibration should be gentle enough not to cause iatrogenic complications, and not recommended in young children, elderly patients, or anyone with intracranial or cervical susceptibilities, and

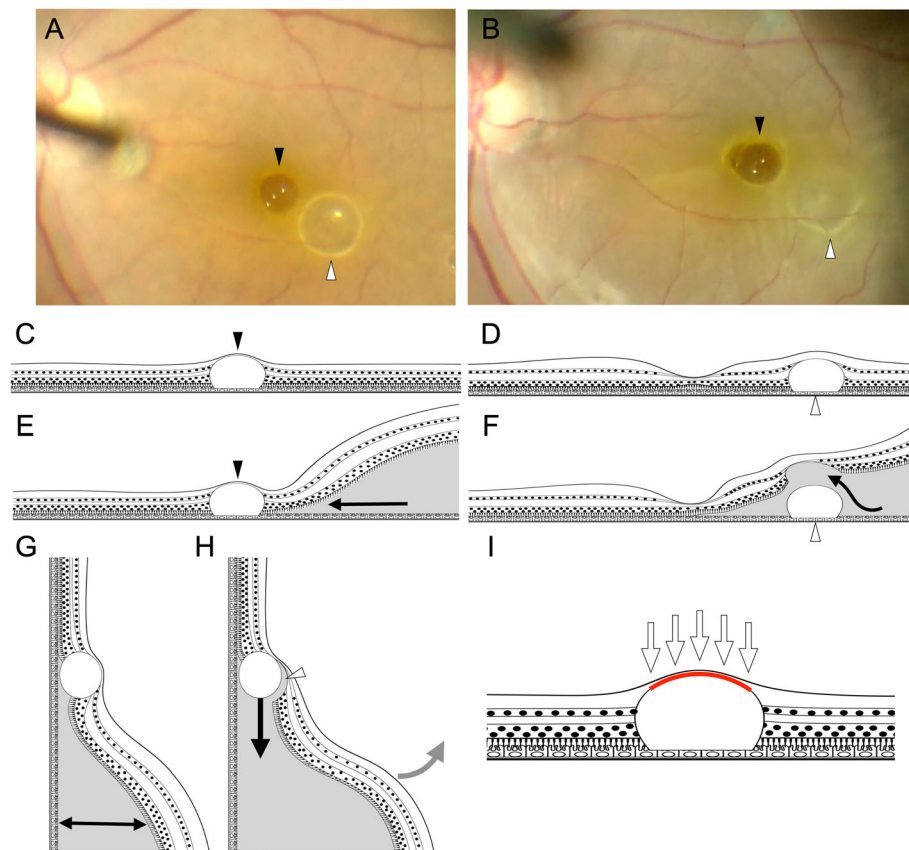


Fig. 4 Subfoveal perfluorocarbon (PFCL) liquid is adherent to the fovea during macular bleb creation. **a** Intraoperative image prior to creation of the macular bleb. The black and white arrowheads indicate the subfoveal and parafoveal PFCL droplets, respectively. **b** Intraoperative image after the creation of the macular bleb. The area of macular detachment includes both PFCL droplets. The retina was easily lifted off the parafoveal PFCL (white arrowhead) with the bleb creation, and the outline of the parafoveal PFCL droplet is now more obscured compared to Fig. **a**. However, the retina does not lift off the subfoveal PFCL (black arrowhead). The outline of the subfoveal droplet remains well delineated. **c** Schematic of subfoveal PFCL (black arrowhead), showing possible contact with the internal limiting membrane (ILM) via compressed or separate Müller cell cones. **d** On the other hand, the parafoveal PFCL (white arrowhead) appears to stay well beneath the outer retina and may make contact with the inner retinal layer, but not the ILM. **e** The arrows indicate the flow of the injected BSS. At the fovea, BSS does not significantly flow between the PFCL (black arrowhead) and the retina due to adhesion between the two. **f** However, at the parafoveal area, BSS flows easily between the PFCL (white arrowhead) and the retina, as shown by the arrow. **g** When the patient is repositioned vertically, the subretinally injected BSS gathers inferiorly, while the height of the retinal detachment inferior to the PFCL increases (double headed arrow). **h** Vibrational forces (gray arrow) break the adhesion between the PFCL and the retina (arrowhead). This causes the PFCL droplet to migrate inferiorly (arrow). **i** Adhesion between the surface of the subfoveal PFCL and Müller cell cones/ILM. To break this adhesion, a force greater than the intraocular pressure (arrows) multiplied by the area of the adhesion (red line) is required

intubation would be a contraindication. Patients undergoing vitreoretinal surgery in Japan often receive local anesthesia without any systemic anesthetics, and are fully alert. This may not be the practice pattern in many settings, in which case raising the head of the bed may not be safe. Furthermore, not all surgical beds have the ability to raise the patient's head upright. In such settings, we recommend temporal drainage retinotomies, and tilting the head temporally to use the same principles. The bleb should be large enough, and retinotomy far temporal enough, to assure that a scotoma does not develop. Tilting the chin up and head reclined further with a superior retinotomy may be an option also.

Whichever procedure is chosen, the number of head tilts and shakes should be minimized to avoid discomfort to the patient.

Creation of the submacular bleb is a key component of this procedure. Prior peeling of the ILM (which accounts for half of retinal stiffness [17]) at the subretinal injection site allows transretinal infusion of BSS into the subretinal space using a low injection pressure (6–8 psi), even without the cannula puncturing through the retina [11, 12]. We confirmed in non-human primate eyes that 8 psi prevents diffuse photoreceptor and RPE damage that may accompany subretinal injections at higher infusion pressures [13]. Consistent with these data, we were

likely able to minimize cellular damage to the macula (Fig. 2b).

In conclusion, we present a novel surgical technique utilizing focal ILM peeling, subretinal BSS, gravity, and vibrational forces to release and extract subfoveally retained PFCL. Since the retained subfoveal PFCL may have toxic effects on the RPE and photoreceptors, [5] the PFCL should be removed as soon as its existence is identified. Future studies would be warranted to generate more efficacy and safety data, as well as to expand our understanding of manipulations in the submacular space with modern instrumentation and surgical techniques.

Patient perspective

The patient was content with the improvement of vision in the left eye, which has allowed him to continue his daily activities.

Supplementary information

Supplementary information accompanies this paper at <https://doi.org/10.1186/s12886-020-01698-1>.

Additional file 1 Surgical video of subfoveal perfluorocarbon liquid removal using subretinal balanced salt solution, vibrational forces, and gravity.

Additional file 2 Animation of a novel surgical technique for subfoveal perfluorocarbon liquid removal using subretinal balanced salt solution, vibrational forces, and gravity.

Abbreviations

BCVA: Best corrected visual acuity; BSS: Balanced salt solution; ILM: Internal limiting membrane; OCT: Optical coherence tomography; PFCL: Perfluorocarbon liquid; RPE: Retinal pigment epithelium; SF₆: Sulfur hexafluoride; VFC: Viscous Fluid Control system

Acknowledgements

Not applicable.

Authors' contributions

KT, SK, YS, YY, and YM designed and conducted the study. KT, RM, and YM provided clinical care. KT, YY and YM wrote the article. MMH, SD, RM and YK acquired and analyzed data. All authors provided a critical review of the manuscript and gave it final approval to be published.

Funding

Not applicable.

Availability of data and materials

Data sharing is not applicable to this article as no datasets were generated or analysed during the current study.

Ethics approval and consent to participate

This report was approved by the ethics committee at Okayama University. The case patient gave written, informed consent prior to undergoing surgery and for inclusion in this case study.

Consent for publication

The case patient gave written, informed consent for publication of this report. The written consent for publication has been obtained from the surgeon shown in Supplementary Video 1.

Competing interests

Consultant for Alcon (YY). The following authors declare that they have no competing interests: KT, SK, MMH, YS, SD, RM, YK, YM.

Author details

¹Department of Ophthalmology, Okayama University Graduate School of Medicine, Dentistry and Pharmaceutical Sciences, 2-5-1 Shikata-cho Kita-ku, Okayama City, Okayama 700-8558, Japan. ²Wills Eye Hospital, Mid Atlantic Retina, Thomas Jefferson University, Philadelphia, PA, USA.

Received: 8 August 2020 Accepted: 15 October 2020

Published online: 23 October 2020

References

- Chang S, Ozmer E, Zimmerman NJ. Intraoperative perfluorocarbon liquids in the management of proliferative vitreoretinopathy. *Am J Ophthalmol*. 1988;106:668–74.
- Chang S, Lincoff H, Zimmerman NJ, Fuchs W. Giant retinal tears. Surgical techniques and results using perfluorocarbon liquids. *Arch Ophthalmol*. 1989;107:761–6 American Medical Association.
- Scott IU, Murray TG, Flynn HW, Smiddy WE, Feuer WJ, Schiffman JC. Outcomes and complications associated with perfluoro-n-octane and perfluoroperhydrophenanthrene in complex retinal detachment repair. *Ophthalmology*. 2000;107:860–5.
- Shulman M, Sepah YJ, Chang S, Abrams GW, Do DV, Nguyen QD. Management of retained subretinal perfluorocarbon liquid. *Ophthalmic Surg Lasers Imaging Retina*. 2013;44:577–83.
- Berglin L, Ren J, Algvere PV. Retinal detachment and degeneration in response to subretinal perfluorodecalin in rabbit eyes. *Graefes Arch Clin Exp Ophthalmol*. 1993;31:233–7.
- Tewari A, Elliott D, Singh CN, Garcia-Valenzuela E, Ito Y, Abrams GW. Changes in retinal sensitivity from retained subretinal perfluorocarbon liquid. *Retina*. 2009;29:248–50.
- Garcia-Arumi J, Castillo P, Lopez M, Boixadera A, Martinez-Castillo V, Pimentel L. Removal of retained subretinal perfluorocarbon liquid. *Br J Ophthalmol*. 2008;92:1693–4.
- Lesnoni G, Rossi T, Gelso A. Subfoveal liquid perfluorocarbon. *Retina*. 2004;24:172–6.
- Sakurai E, Ogura Y. Removal of residual subfoveal perfluoro-n-octane liquid. *Graefes Arch Clin Exp Ophthalmol*. 2007;245:1063–4.
- Le Tien V, Pierre-Kahn V, Azan F, Renard G, Chauvaud D. Displacement of retained subfoveal perfluorocarbon liquid after vitreoretinal surgery. *Arch Ophthalmol*. 2008;126:98–101.
- Okanouchi T, Toshima S, Kimura S, Morizane Y, Shiraga F. Novel technique for subretinal injection using local removal of the internal limiting membrane. *Retina*. 2016;36:1035–8.
- Toshima S, Morizane Y, Kimura S, Shiraga F. Planned Foveal detachment technique for the resolution of diabetic macular edema resistant to anti-vascular endothelial growth factor therapy. *Retina*. 2019;39(Suppl 1):S162–8.
- Takahashi K, Morizane Y, Hisatomi T, Tachibana T, Kimura S, Hosokawa MM, et al. The influence of subretinal injection pressure on the microstructure of the monkey retina. *PLoS One*. 2018;13:e0209996.
- Smith AG, Cost BM, Ehlers JP. Intraoperative OCT-assisted subretinal Perfluorocarbon liquid removal in the DISCOVER study. *Ophthalmic Surg Lasers Imaging Retina*. 2015;46:964–6.
- Schepens CL, Dobbie JG, McMeel JW. Retinal detachments with giant breaks: preliminary report. *Trans Am Acad Ophthalmol Otolaryngol*. 1962;66:471–9.
- Machemer R, Allen AW. Retinal tears 180 degrees and greater. Management with vitrectomy and intravitreal gas. *Arch Ophthalmol*. 1976;94:1340–6.
- Wollensak G, Spoerl E, Grosse G, Wirlbauer C. Biomechanical significance of the human internal limiting lamina. *Retina*. 2006;26:965–8.

Publisher's Note

Springer Nature remains neutral with regard to jurisdictional claims in published maps and institutional affiliations.