

12-14-2020

## Contrast-enhanced ultrasound in association with serum biomarkers for differentiating combined hepatocellular-cholangiocarcinoma from hepatocellular carcinoma and intrahepatic cholangiocarcinoma.

Jie Yang

*West China Hospital of Sichuan University*

Ya-Han Zhang

*West China Hospital of Sichuan University*

Jia-Wu Li

*West China Hospital of Sichuan University*

Ying-Yu Shi

Follow this and additional works at: <https://jdc.jefferson.edu/radiologyfp>



Part of the [Radiology Commons](#)

Jia-Yan Huang

*West China Hospital of Sichuan University*

[Let us know how access to this document benefits you](#)

### Recommended Citation

See next page for additional authors

Yang, Jie; Zhang, Ya-Han; Li, Jia-Wu; Shi, Ying-Yu; Huang, Jia-Yan; Luo, Yan; Liu, Ji-Bin; and Lu, Qiang, "Contrast-enhanced ultrasound in association with serum biomarkers for differentiating combined hepatocellular-cholangiocarcinoma from hepatocellular carcinoma and intrahepatic cholangiocarcinoma." (2020). *Department of Radiology Faculty Papers*. Paper 100.  
<https://jdc.jefferson.edu/radiologyfp/100>

This Article is brought to you for free and open access by the Jefferson Digital Commons. The Jefferson Digital Commons is a service of Thomas Jefferson University's [Center for Teaching and Learning \(CTL\)](#). The Commons is a showcase for Jefferson books and journals, peer-reviewed scholarly publications, unique historical collections from the University archives, and teaching tools. The Jefferson Digital Commons allows researchers and interested readers anywhere in the world to learn about and keep up to date with Jefferson scholarship. This article has been accepted for inclusion in Department of Radiology Faculty Papers by an authorized administrator of the Jefferson Digital Commons. For more information, please contact: [JeffersonDigitalCommons@jefferson.edu](mailto:JeffersonDigitalCommons@jefferson.edu).

---

**Authors**

Jie Yang, Ya-Han Zhang, Jia-Wu Li, Ying-Yu Shi, Jia-Yan Huang, Yan Luo, Ji-Bin Liu, and Qiang Lu

# World Journal of *Gastroenterology*

*World J Gastroenterol* 2020 December 14; 26(46): 7272-7435



**REVIEW**

- 7272 Challenges in COVID-19 drug treatment in patients with advanced liver diseases: A hepatology perspective  
*Hanafi AS, Abd-Elsalam S*

**MINIREVIEWS**

- 7287 Evolving role of artificial intelligence in gastrointestinal endoscopy  
*Parasher G, Wong M, Rawat M*

**ORIGINAL ARTICLE****Basic Study**

- 7299 Untargeted metabolomics characteristics of nonobese nonalcoholic fatty liver disease induced by high-temperature-processed feed in Sprague-Dawley rats  
*Xue LJ, Han JQ, Zhou YC, Peng HY, Yin TF, Li KM, Yao SK*
- 7312 Extrahepatic bile duct reconstruction in pigs with heterogenous animal-derived artificial bile ducts: A preliminary experience  
*Shang H, Zeng JP, Wang SY, Xiao Y, Yang JH, Yu SQ, Liu XC, Jiang N, Shi XL, Jin S*

**Case Control Study**

- 7325 Contrast-enhanced ultrasound in association with serum biomarkers for differentiating combined hepatocellular-cholangiocarcinoma from hepatocellular carcinoma and intrahepatic cholangiocarcinoma  
*Yang J, Zhang YH, Li JW, Shi YY, Huang JY, Luo Y, Liu JB, Lu Q*
- 7338 Response of gut microbiota to serum metabolome changes in intrahepatic cholestasis of pregnant patients  
*Li GH, Huang SJ, Li X, Liu XS, Du QL*
- 7352 Colonic vitamin D receptor expression is inversely associated with disease activity and jumonji domain-containing 3 in active ulcerative colitis  
*Wang HQ, Zhang WH, Wang YQ, Geng XP, Wang MW, Fan YY, Guan J, Shen JL, Chen X*

**Retrospective Study**

- 7367 Prevalence and risk factors of nonalcoholic fatty liver disease in patients with inflammatory bowel diseases: A cross-sectional and longitudinal analysis  
*Hoffmann P, Jung V, Behnisch R, Gauss A*
- 7382 Prognostic value of the preoperative fibrinogen-to-albumin ratio in pancreatic ductal adenocarcinoma patients undergoing R0 resection  
*Zhang LP, Ren H, Du YX, Wang CF*

**Clinical Trials Study**

- 7405** Effect of postoperative early enteral nutrition on clinical outcomes and immune function of cholangiocarcinoma patients with malignant obstructive jaundice

*Ma BQ, Chen SY, Jiang ZB, Wu B, He Y, Wang XX, Li Y, Gao P, Yang XJ*

**Prospective Study**

- 7416** Value of shear wave elastography with maximal elasticity in differentiating benign and malignant solid focal liver lesions

*Zhang HP, Gu JY, Bai M, Li F, Zhou YQ, Du LF*

**CASE REPORT**

- 7425** Infliximab is effective in the treatment of ulcerative colitis with dermatomyositis: A case report

*Huang BB, Han LC, Liu GF, Lv XD, Gu GL, Li SQ, Chen L, Wang HQ, Zhan LL, Lv XP*

**ABOUT COVER**

Editorial Board Member of *World Journal of Gastroenterology*, Dr. Oscar Tatsuya Teramoto-Matsubara received his bachelor's degree from Universidad La Salle (Mexico City, Mexico) in 1986, after which he completed a residency in gastroenterology at the Centro Médico Nacional del Instituto Mexicano del Seguro Social. From 2016 to 2018, he served as President of the Asociación Latinoamericana de Neurogastroenterología; he also served as an editorial board member of the Association's official journal, *Neurogastro Latam Journal*. His current clinical research interests involve gastroesophageal reflux disease and other topics related to functional bowel disorders. In endoscopy practice, he is involved in quality assurance of upper and lower endoscopy procedures. Currently, Dr. Teramoto-Matsubara is Assistant Professor at Universidad La Salle and Universidad Anáhuac. (L-Editor: Filipodia)

**AIMS AND SCOPE**

The primary aim of *World Journal of Gastroenterology* (*WJG*, *World J Gastroenterol*) is to provide scholars and readers from various fields of gastroenterology and hepatology with a platform to publish high-quality basic and clinical research articles and communicate their research findings online. *WJG* mainly publishes articles reporting research results and findings obtained in the field of gastroenterology and hepatology and covering a wide range of topics including gastroenterology, hepatology, gastrointestinal endoscopy, gastrointestinal surgery, gastrointestinal oncology, and pediatric gastroenterology.

**INDEXING/ABSTRACTING**

The *WJG* is now indexed in Current Contents®/Clinical Medicine, Science Citation Index Expanded (also known as SciSearch®), Journal Citation Reports®, Index Medicus, MEDLINE, PubMed, PubMed Central, and Scopus. The 2020 edition of Journal Citation Report® cites the 2019 impact factor (IF) for *WJG* as 3.665; IF without journal self cites: 3.534; 5-year IF: 4.048; Ranking: 35 among 88 journals in gastroenterology and hepatology; and Quartile category: Q2.

**RESPONSIBLE EDITORS FOR THIS ISSUE**

Production Editor: Ji-Hong Liu; Production Department Director: Yun-Xiaoqian Wu; Editorial Office Director: Ze-Mao Gong.

**NAME OF JOURNAL**

*World Journal of Gastroenterology*

**ISSN**

ISSN 1007-9327 (print) ISSN 2219-2840 (online)

**LAUNCH DATE**

October 1, 1995

**FREQUENCY**

Weekly

**EDITORS-IN-CHIEF**

Andrzej S Tarnawski, Subrata Ghosh

**EDITORIAL BOARD MEMBERS**

<http://www.wjgnet.com/1007-9327/editorialboard.htm>

**PUBLICATION DATE**

December 14, 2020

**COPYRIGHT**

© 2020 Baishideng Publishing Group Inc

**INSTRUCTIONS TO AUTHORS**

<https://www.wjgnet.com/bpg/gerinfo/204>

**GUIDELINES FOR ETHICS DOCUMENTS**

<https://www.wjgnet.com/bpg/GerInfo/287>

**GUIDELINES FOR NON-NATIVE SPEAKERS OF ENGLISH**

<https://www.wjgnet.com/bpg/gerinfo/240>

**PUBLICATION ETHICS**

<https://www.wjgnet.com/bpg/GerInfo/288>

**PUBLICATION MISCONDUCT**

<https://www.wjgnet.com/bpg/gerinfo/208>

**ARTICLE PROCESSING CHARGE**

<https://www.wjgnet.com/bpg/gerinfo/242>

**STEPS FOR SUBMITTING MANUSCRIPTS**

<https://www.wjgnet.com/bpg/GerInfo/239>

**ONLINE SUBMISSION**

<https://www.f6publishing.com>

## Case Control Study

**Contrast-enhanced ultrasound in association with serum biomarkers for differentiating combined hepatocellular-cholangiocarcinoma from hepatocellular carcinoma and intrahepatic cholangiocarcinoma**

Jie Yang, Ya-han Zhang, Jia-Wu Li, Ying-Yu Shi, Jia-Yan Huang, Yan Luo, Ji-Bin Liu, Qiang Lu

**ORCID number:** Jie Yang 0000-0002-6819-146X; Ya-han Zhang 0000-0002-5168-8082; Jia-Wu Li 0000-0003-0844-5883; Ying-Yu Shi 0000-0002-5910-9882; Jia-Yan Huang 0000-0002-1918-2874; Yan Luo 0000-0003-2985-1768; Ji-Bin Liu 0000-0003-2979-9162; Qiang Lu 0000-0002-4057-1997.

**Author contributions:** Yang J and Lu Q designed the research; Yang J, Li JW, Shi YY, Luo Y and Lu Q performed the research; Zhang YH contributed to pathologic analysis studies; Yang J, Li JW, Shi YY, Huang JY and Lu Q collected the data. Yang J and Lu Q drafted the manuscript and reviewed the literature; Luo Y and Liu JB revised the manuscript; All authors approve the final version of the submitted manuscript and agree to ensure that any questions related to the work are appropriately resolved.

**Supported by** National Natural Science Foundation of China, No. 81571697; and The Science and Technology Department of Sichuan Province, No. 2017SZ0003 and No. 2018FZ0044.

**Institutional review board statement:** This study was reviewed and approved by the

**Jie Yang, Jia-Wu Li, Ying-Yu Shi, Jia-Yan Huang, Yan Luo, Qiang Lu,** Department of Medical Ultrasound, West China Hospital of Sichuan University, Chengdu 610041, Sichuan Province, China

**Ya-han Zhang,** Department of Pathology, West China Hospital of Sichuan University, Chengdu 610041, Sichuan Province, China

**Ji-Bin Liu,** Department of Radiology, Thomas Jefferson University, Philadelphia, PA 19107, United States

**Corresponding author:** Qiang Lu, MD, Professor, Department of Medical Ultrasound, West China Hospital of Sichuan University, No. 37 Guoxue Xiang, Chengdu 610041, Sichuan Province, China. [luqiang@scu.edu.cn](mailto:luqiang@scu.edu.cn)

**Abstract****BACKGROUND**

Combined hepatocellular-cholangiocarcinoma (CHC) is a rare type of primary liver cancer. Due to its complex histopathological characteristics, the imaging features of CHC can overlap with those of hepatocellular carcinoma (HCC) and intrahepatic cholangiocarcinoma (ICC).

**AIM**

To investigate the possibility and efficacy of differentiating CHC from HCC and ICC by using contrast-enhanced ultrasound (CEUS) Liver Imaging Reporting and Data System (LI-RADS) and tumor biomarkers.

**METHODS**

Between January 2016 and December 2019, patients with histologically confirmed CHC, ICC and HCC with chronic liver disease were enrolled. The diagnostic formula for CHC was as follows: (1) LR-5 or LR-M with elevated alpha-fetoprotein (AFP) and carbohydrate antigen 19-9 (CA19-9); (2) LR-M with elevated AFP and normal CA19-9; or (3) LR-5 with elevated CA19-9 and normal AFP. The sensitivity, specificity, accuracy and area under the receiver operating characteristic curve were calculated to determine the diagnostic value of the criteria.

review board of West China Hospital of Sichuan University.

**Informed consent statement:** All study participants, or their legal guardian, provided informed written consent prior to study enrollment.

**Conflict-of-interest statement:** All authors have no financial relationships to disclose.

**Data sharing statement:** No additional data are available.

**STROBE statement:** The authors have read the STROBE Statement-checklist of items, and the manuscript was prepared and revised according to the STROBE Statement-checklist of items.

**Open-Access:** This article is an open-access article that was selected by an in-house editor and fully peer-reviewed by external reviewers. It is distributed in accordance with the Creative Commons Attribution NonCommercial (CC BY-NC 4.0) license, which permits others to distribute, remix, adapt, build upon this work non-commercially, and license their derivative works on different terms, provided the original work is properly cited and the use is non-commercial. See: <http://creativecommons.org/licenses/by-nc/4.0/>

**Manuscript source:** Unsolicited manuscript

**Specialty type:** Gastroenterology and hepatology

**Country/Territory of origin:** China

#### Peer-review report's scientific quality classification

Grade A (Excellent): A, A  
Grade B (Very good): 0  
Grade C (Good): C  
Grade D (Fair): 0  
Grade E (Poor): 0

**Received:** August 6, 2020

**Peer-review started:** August 6, 2020

**First decision:** October 18, 2020

**Revised:** October 31, 2020

**Accepted:** November 9, 2020

**Article in press:** November 9, 2020

## RESULTS

After propensity score matching, 134 patients (mean age of  $51.4 \pm 9.4$  years, 108 men) were enrolled, including 35 CHC, 29 ICC and 70 HCC patients. Based on CEUS LI-RADS classification, 74.3% (26/35) and 25.7% (9/35) of CHC lesions were assessed as LR-M and LR-5, respectively. The rates of elevated AFP and CA19-9 in CHC patients were 51.4% and 11.4%, respectively, and simultaneous elevations of AFP and CA19-9 were found in 8.6% (3/35) of CHC patients. The sensitivity, specificity, positive predictive value, negative predictive value, accuracy and area under the receiver operating characteristic curve of the aforementioned diagnostic criteria for discriminating CHC from HCC and ICC were 40.0%, 89.9%, 58.3%, 80.9%, 76.9% and 0.649, respectively. When considering the reported prevalence of CHC (0.4%-14.2%), the positive predictive value and NPV were revised to 1.6%-39.6% and 90.1%-99.7%, respectively.

## CONCLUSION

CHCs are more likely to be classified as LR-M than LR-5 by CEUS LI-RADS. The combination of the CEUS LI-RADS classification with serum tumor markers shows high specificity but low sensitivity for the diagnosis of CHC. Moreover, CHC could be confidently excluded with high NPV.

**Key Words:** Combined hepatocellular-cholangiocarcinoma; Contrast-enhanced ultrasound; Liver imaging reporting and data system; Sensitivity; Diagnosis; Liver neoplasms

©The Author(s) 2020. Published by Baishideng Publishing Group Inc. All rights reserved.

**Core Tip:** The imaging features of combined hepatocellular-cholangiocarcinoma (CHC) are complicated due to its complex histopathological characteristics. In addition, biopsy may misguide the correct diagnosis of CHC due to sampling error or tissue insufficiency. This study investigated the diagnostic value of the contrast-enhanced ultrasound Liver Imaging Reporting and Data System classification in association with serological tumor markers in differentiating CHC from hepatocellular carcinoma and intrahepatic cholangiocarcinoma. The results showed that the combined diagnostic criteria had high specificity and negative predictive value but low sensitivity for the diagnosis of CHC. These findings could help radiologists and clinical investigators confidently exclude CHC lesions in the clinical setting.

**Citation:** Yang J, Zhang YH, Li JW, Shi YY, Huang JY, Luo Y, Liu JB, Lu Q. Contrast-enhanced ultrasound in association with serum biomarkers for differentiating combined hepatocellular-cholangiocarcinoma from hepatocellular carcinoma and intrahepatic cholangiocarcinoma. *World J Gastroenterol* 2020; 26(46): 7325-7337

**URL:** <https://www.wjgnet.com/1007-9327/full/v26/i46/7325.htm>

**DOI:** <https://dx.doi.org/10.3748/wjg.v26.i46.7325>

## INTRODUCTION

Combined hepatocellular-cholangiocarcinoma (CHC) is increasingly recognized in cirrhotic liver, with a reported prevalence of 0.4%-14.2% of all primary liver carcinomas<sup>[1-3]</sup>. CHC is the second most common primary liver cancer in cirrhotic liver, followed by intrahepatic cholangiocarcinoma (ICC), excluding perihilar cholangiocarcinoma<sup>[4]</sup>. According to the 2010 World Health Organization classification<sup>[5]</sup>, this special type of tumor requires the presence of both unambiguously differentiated hepatocellular and biliary components. CHC can have various imaging features overlapping with hepatocellular carcinoma (HCC), ICC and liver metastasis for complex histopathological components<sup>[6-8]</sup>. However, the prognosis and treatment of CHC differ from those of HCC and ICC<sup>[9]</sup>, and therefore the accurate diagnosis of this tumor type is of great importance for appropriate patient management.

A few studies have reported the imaging features of CHC lesions on contrast-enhanced ultrasound (CEUS)<sup>[10-13]</sup>. Theoretically, due to the mixed elements of CHC,



**Published online:** December 14, 2020

**P-Reviewer:** Izbicki JR, Sempokuya T

**S-Editor:** Gao CC

**L-Editor:** Filipodia

**P-Editor:** Liu JH



both HCC-like and ICC-like imaging features would be visualized. In addition, serum biomarkers, especially alpha-fetoprotein (AFP) and carbohydrate antigen 19-9 (CA19-9), have been shown to be helpful in the diagnosis of CHC<sup>[10,11,13,14]</sup>. The combination of CEUS and serum biomarkers was reported to improve specificity for the differentiation between CHC and HCC or ICC in a study population not limited to patients at risk for HCC<sup>[10]</sup>.

The American College of Radiology released CEUS Liver Imaging Reporting and Data System (LI-RADS) for standardizing CEUS diagnosis of liver nodules in high-risk patients<sup>[15]</sup>. Although not fully validated, CEUS LI-RADS has been reported to be effective for the diagnosis of HCC<sup>[16,17]</sup>. However, challenges still exist for the differential diagnosis of highly suspicious HCC and other malignant entities, such as CHC and ICC. The purpose of this study was to investigate whether the combination of CEUS LI-RADS and serum biomarkers is helpful for differentiating CHC from HCC and ICC in patients with chronic liver disease.

## MATERIALS AND METHODS

### Study subjects

This retrospective study was approved by the institutional review board, and informed consent was obtained from all patients. From January 2016 to December 2019, patients with pathologically confirmed primary liver cancer after liver resection were retrospectively selected through a review of our Ultrasonic Information System. Inclusion criteria included: (1) CEUS performed within 1 mo before liver resection; (2) Patients with risk factors for HCC, including cirrhosis and chronic hepatitis B; and (3) Testing of AFP and CA19-9 levels within 7 d before curative resection. Lesions with neoplastic vascular thrombi were excluded from this study. Eventually, we included 35 CHC, 29 ICC and 1051 HCC patients. After one-to-two (CHC:HCC = 1:2) propensity score matching by tumor size, age and gender, 70 HCC lesions were selected for analysis. A flow chart for the study population selection is presented in [Figure 1](#).

### Ultrasound examination

All patients underwent B-mode ultrasound and CEUS examination by an ultrasound system (IU22, Philips Medical Solutions; Mountain View, CA, United States) equipped with a C5-1 abdominal convex transducer (frequency range of 1-5 MHz). The CEUS examination was performed according to technical recommendations following the World Federation for Ultrasound in Medicine and Biology-European Federation of Societies for Ultrasound in Medicine and Biology guidelines after a conventional ultrasound study<sup>[18]</sup>. After activation of the contrast-specific imaging mode, 1.2-2.4 mL of contrast agent (SonoVue, Bracco, Milan, Italy) was injected intravenously and flushed with 5 mL of 0.9% saline solution through a 20-gauge angio-catheter needle placed in the antecubital vein. The imaging timer was started immediately upon completion of SonoVue injection. The set of images was stored on the hard disk of the ultrasound system and copied to a portable hard disk for later evaluation.

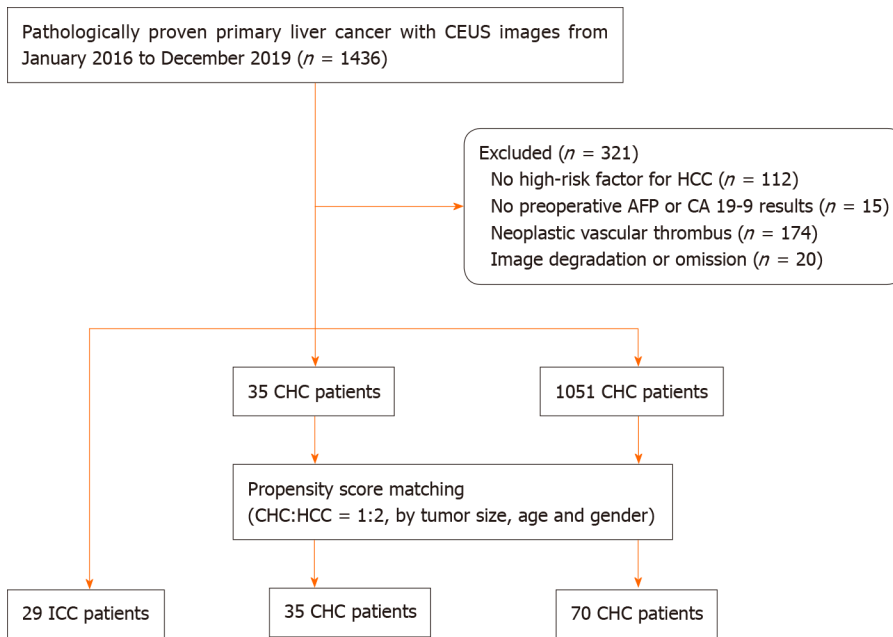
### CEUS imaging analysis

According to the CEUS LI-RADS (2017 version), a hepatic nodule is categorized from LR-1 to LR-5 or LR-M and LR-TIV according to the likelihood of HCC<sup>[17]</sup>. The following imaging features were used to categorize each nodule: Nodule size, pattern of arterial phase enhancement, presence, timing and degree of washout and tumor-in-vein ([Supplementary Appendix Table 1](#)).

The CEUS images were reviewed independently by two certified radiologists (Li JW and Shi YY with more than 5 and 3 years of experience with liver CEUS, respectively) who were blinded to the pathology results and serum biomarker levels and assigned a category to each nodule according to CEUS LI-RADS (2017 version)<sup>[15,17]</sup>. In case of discordant interpretations between the reviewers, arbitration from an expert radiologist with more than 10 years of experience (Lu Q) was performed.

### Diagnostic criteria for distinguishing CHC from HCC or ICC

The diagnostic criteria of CHC were defined as follows: (1) LR-5 or LR-M lesion with simultaneously elevated AFP and CA19-9 (AFP > 20 ng/mL and CA19-9 > 100 units/mL) levels<sup>[19-21]</sup>; (2) LR-M lesion with elevated AFP levels and normal CA19-9 Levels; or (3) LR-5 lesion with elevated CA19-9 levels and normal AFP levels. The diagnostic test was performed with pathological results as the reference standard.



**Figure 1 Study population selection flowchart.** AFP: Alpha-fetoprotein; CA19-9: Carbohydrate antigen 19-9; CEUS: Contrast-enhanced ultrasound; CHC: Combined hepatocellular-cholangiocarcinoma; HCC: Hepatocellular carcinoma; ICC: Intrahepatic cholangiocarcinoma.

### Statistical analysis

Quantitative data were expressed as the mean ± standard deviation. Qualitative data were presented as numbers and percentages. Differences in quantitative variables were tested by the independent sample *t*-test. Comparison of the rates of imaging characteristics was performed by using the  $\chi^2$  test or Fisher’s exact test. The area under the receiver operating characteristic curve (AUC) was used to analyze the performance of the diagnostic criteria. The sensitivity, specificity, accuracy, positive predictive value (PPV) and negative predictive value (NPV) for CHC were calculated by using standard procedures<sup>[22]</sup>.

Kappa values were evaluated to measure intrareader agreement of CEUS features and CEUS LI-RADS classification of the nodules. The strength of agreement was interpreted according to the classification scales for kappa: 0.00-0.20 poor, 0.21-0.40 fair, 0.41-0.60 moderate, 0.61-0.80 substantial and 0.81-1.00 almost perfect<sup>[23]</sup>. Propensity score matching was performed with R software version 3.6.1 (R Foundation for Statistical Computing, Vienna, Austria; [www.r-project.org](http://www.r-project.org)). Statistical analyses were performed with the statistical software package SPSS, version 25.0; IBM, Armonk, NY, United States). Significance was defined as two-sided  $P < 0.05$ .

## RESULTS

### Patient characteristics

After propensity score matching, a total of 35 CHC, 29 ICC and 70 HCC patients were included for analysis. The clinical characteristics of the 134 patients are shown in [Table 1](#). In the CHC group, the mean nodule size was  $5.6 \pm 3.7$  cm (range 2.0-17.0 cm) in diameter. Elevated AFP levels were found in 51.4% (18/35) of CHC patients, in contrast to 10.3% (3/29) of ICC patients and 58.6% (41/70) of HCC patients ( $P = 0.001$  and 0.535, respectively). In addition, elevated CA19-9 levels were found in 11.4% (4/35) of CHC patients compared with 31.0% (9/29) of ICC patients and 1.4% (1/70) of HCC patients ( $P = 0.066$  and 0.041, respectively). Simultaneous elevations in AFP and CA19-9 were found in 8.6% (3/35) of CHC, 3.4% (1/29) of ICC and 1.4% (1/70) of HCC patients ( $P > 0.05$ ).

### CEUS imaging characteristics

All the CHC lesions illustrated hyperenhancement in the arterial phase and hypo-enhancement in the portal or late phase. In the arterial phase, peripheral irregular rim-like and non-rim-like hyperenhancement were demonstrated in 17.1% (6/35) and 82.9% (29/35) of CHC lesions, respectively. In the portal phase, early washout was

**Table 1** Baseline characteristics of the study patients with combined hepatocellular-cholangiocarcinoma, intrahepatic cholangiocarcinoma and hepatocellular carcinoma

	CHC, <i>n</i> = 35	Non-CHC		P1	P2
		ICC, <i>n</i> = 29	HCC, <i>n</i> = 70		
Tumor size in cm	5.6 ± 3.7	6.9 ± 3.3	5.1 ± 3.1	0.158	0.432
Age in yr	49.3 ± 9.5	55.0 ± 9.3	50.5 ± 9.2	0.018	0.555
Numbers of male	31 (88.6)	24 (82.8)	46 (76.7)	0.720	
HBV (+)	30 (85.7)	21 (72.4)	62 (88.6)	0.224	0.756
HCV (+)	3 (8.6)	3 (10.3)	0 (0.0)	1.000	0.035
Liver cirrhosis	23 (65.7)	12 (41.4)	42 (60.0)	0.077	0.671
AFP, > 20 ng/mL	18 (51.4)	3 (10.3)	41 (58.6)	0.001	0.535
CA19-9, > 100 U/mL	4 (11.4)	9 (31.0)	1 (1.4)	0.066	0.041
AC	3 (8.6)	1 (3.4)	1 (1.4)	0.620	0.107

Data are numbers of lesions, with percentages in parentheses or mean ± SD. P1 statistical difference between combined hepatocellular-cholangiocarcinoma (CHC) and intrahepatic cholangiocarcinoma (ICC). P2 statistical difference between CHC and hepatocellular carcinoma (HCC). AC means simultaneous elevated alpha-fetoprotein (AFP) and carbohydrate antigen 19-9 levels (CA19-9).

present in 74.3% (26/35) of CHC lesions compared with 96.6% (28/29) of ICC lesions ( $P = 0.017$ ) and 18.6% (13/70) of HCC patients ( $P < 0.001$ ). Marked washout within 120 s was found in 5.7% (2/35) of CHC lesions, in contrast to 3.4% (1/29) of ICC lesions ( $P = 1.000$ ) and none of the HCC lesions ( $P = 0.109$ ). According to CEUS LI-RADS, 25.7% (9/35) and 74.3% (26/35) of CHCs were classified as LR-5 and LR-M, respectively, in contrast to none and 100% in ICC ( $P = 0.003$ ) and 81.4% (57/70) and 18.6% (13/70) in HCC ( $P < 0.001$ ). The pre-contrast and contrast-enhanced ultrasonographic imaging features are presented in [Table 2](#).

The interobserver agreement of CEUS features for the CHC and non-CHC groups is summarized in [Table 3](#). In the CHC group, the *k* values of interobserver agreements on the arterial phase hyperenhancement pattern, early washout and marked washout were 0.624, 0.608 and 0.635, respectively. In the non-CHC group, the *k* values of interobserver agreements on arterial enhancement pattern, early washout and marked washout were 0.524, 0.875 and 0.662, respectively. The *k* values of CEUS LI-RADS categorization in the two groups were 0.663 and 0.876, respectively.

### Performance of CHC diagnostic criteria in distinguishing between CHC and HCC or ICC

Serum tumor biomarkers (AFP and CA19-9) and the CEUS LI-RADS categorization of the 134 patients are shown in [Table 4](#) ([Figure 2-4](#)). [Table 5](#) shows the performance of the diagnostic criteria. The AUC, sensitivity, specificity, PPV, NPV, and accuracy were 0.649, 40.0%, 89.9%, 58.3%, 80.9% and 76.9%, respectively. In this study, CHC accounted for 26.1% (35/134) of the study population, yielding an adjusted PPV of 58.3% and NPV of 80.9%. However, the actual prevalence of CHC is much lower, reportedly accounting for 0.4%-14.2% of primary hepatic cancers<sup>[2,24,25]</sup>. Considering eighth reported prevalence of CHC (0.4%-14.2%), the PPV and NPV were modified to 1.6%-39.6% and 90.1%-99.7%, respectively.

## DISCUSSION

CHC is the second most common type of primary liver cancer in cirrhotic liver<sup>[4]</sup>. A definitive diagnosis of CHC requires both unambiguously differentiated hepatocellular and biliary components in the same tumor in pathological analysis as per the World Health Organization classification<sup>[5]</sup>. However, biopsy may misguide the correct diagnosis of CHC due to sampling error or tissue insufficiency<sup>[26,27]</sup>, which highlights the importance of surgical specimens and imaging diagnosis. Our study indicated that a higher percentage of CHC was classified as LR-M than LR-5 (74.3% *vs* 25.7%,  $P < 0.05$ ). Simultaneous elevation of AFP and CA19-9 was present in only 8.6%

**Table 2** Imaging characteristics of the study patients with combined hepatocellular-cholangiocarcinoma and those with intrahepatic cholangiocarcinoma and hepatocellular carcinoma, *n* (%)

	CHC, <i>n</i> = 35	Non-CHC		P1	P2
		ICC, <i>n</i> = 29	HCC, <i>n</i> = 70		
Echogenic degree				0.692	0.099
Hypo-	32 (91.4)	25 (86.2)	55 (78.6)		
Hyper-	3 (8.6)	4 (13.8)	15 (21.4)		
Poor boundary	23 (65.7)	22 (75.9)	36 (51.4)	0.422	0.212
Irregular shape	23 (65.7)	20 (69.0)	30 (42.9)	1.000	0.038
APHE pattern				0.757	0.001
Rim-like	6 (17.1)	6 (20.7)	0 (0.0)		
Non-rim-like	29 (82.9)	23 (79.3)	70 (100)		
Timing of washout onset				0.017	< 0.001
Early, < 60 s	26 (74.3)	28 (96.6)	13 (18.6)		
Late, > 60 s	9 (25.7)	1 (3.4)	57 (81.4)		
Degree of washout				1.000	0.109
Marked, as observed within first 120 s	2 (5.7)	1 (3.4)	0 (0.0)		
Mild	33 (94.3)	28 (96.6)	70 (100.0)		
CEUS LI-RADS				0.003	< 0.001
LR-5	9 (25.7)	0 (0.0)	57 (81.4)		
LR-M	26 (74.3)	29 (100.0)	13 (18.6)		

P1 significant difference between combined hepatocellular-cholangiocarcinoma and intrahepatic cholangiocarcinoma. P2 significant difference between combined hepatocellular-cholangiocarcinoma and hepatocellular carcinoma. APHE: Arterial phase hyperenhancement; CHC: Combined hepatocellular-cholangiocarcinoma; HCC: Hepatocellular carcinoma; ICC: Intrahepatic cholangiocarcinoma; LI-RADS: Liver Image Reporting and Data System.

(3/35) of CHC patients. The combination of CEUS LI-RADS and serum AFP and CA19-9 levels showed a specificity of 89.9% and accuracy of 76.9% for the diagnosis of CHC in patients with chronic liver disease.

In our study, all CHC lesions showed typical manifestations of liver cancer (*i.e.* the enhancement mode of “rapid wash in and out”)<sup>[10-12,28]</sup>. However, 74.3% (26/35) of CHC cases were assessed as LR-M, which is higher than the rates reported by Choi *et al*<sup>[29]</sup> (28.0%) and Jeon *et al*<sup>[30]</sup> (61.4%) based on magnetic resonance imaging (MRI) LI-RADS. This discrepancy may be explained by the fact that early washout is more easily observed by CEUS due to higher temporal resolution than MRI. In this study, the other 25.7% (9/35) of CHC lesions were classified as LR-5. In other words, 100% of CHC lesions were correctly classified as malignant by CEUS LI-RADS, which is in line with the findings of Sagrini *et al*<sup>[12]</sup>, where CEUS correctly suggested a condition of malignancy in a higher number of cases than CT and MRI for the diagnosis of CHC.

Elevated AFP and CA19-9 levels have been reported as potential diagnostic indicators for HCC and ICC, respectively<sup>[19,31]</sup>. Prior studies have demonstrated that the combination of AFP and CA19-9 with radiologic characteristics may aid the diagnosis of CHC<sup>[10,11,13,14]</sup>. Huang *et al*<sup>[10]</sup> reported that the sensitivity and specificity of diagnosing CHC based on their criteria (*i.e.* simultaneous elevation of AFP and CA19-9 or with a tumor marker elevation in discordance with HCC-like or ICC-like pattern on CEUS), were 32.5% and 92.8%, respectively, which is comparable to the result of our study. Compared with Huang’s study, HCC lesions were selected by propensity score matching in this study, which reduced patient selection bias. Moreover, CEUS LI-RADS was adopted in our criteria, which makes it more standardized to use in the clinical setting.

The diagnostic criteria for CHC showed high specificity (89.9%) and modified NPV (90.1% to 99.7%), which indicated that CHC could be effectively ruled out by using CEUS LI-RADS. Atypical HCC or ICC would be classified as LR-M, a category

**Table 3** The inter-observer agreement of contrasted-enhanced ultrasound features for the combined hepatocellular-cholangiocarcinomas and non-combined hepatocellular-cholangiocarcinomas lesions

	CHC		K1	Non-CHC		K2
	Reader 1	Reader 2		Reader 1	Reader 2	
APHE pattern			0.624			0.524
Rim-like	6	3		8	3	
Non-rim-like	29	32		91	96	
Timing of washout onset			0.608			0.875
Early, < 60 s	26	22		42	40	
Late, > 60 s	9	13		57	59	
Degree of washout			0.635			0.662
Marked, as observed within first 120 s	3	3		2	1	
Mild	32	32		97	98	
CEUS LI-RADS			0.663			0.876
LR-5	9	12		56	58	
LR-M	26	23		43	41	

Kappa values 0.81-1.0, 0.61-0.80, 0.41-0.60, 0.21-0.40, and 0.00-0.20 correspond to almost perfect, substantial, moderate, fair, and slight, respectively. APHE: Arterial Phase Hyperenhancement; CEUS: Contrast-enhanced ultrasound; CHC: Combined hepatocellular-cholangiocarcinoma; LI-RADS: Liver Imaging Reporting and Data system.

**Table 4** Contrast-enhanced ultrasound Liver Imaging Reporting and Data System categorization and serum biomarkers of 134 patients

Serum biomarker	CHC		HCC		ICC	
	LR-5	LR-M	LR-5	LR-M	LR-5	LR-M
AFP (+) CA19-9 (+)	0	3 <sup>1</sup>	0	1 <sup>1</sup>	0	1 <sup>1</sup>
AFP (-) CA19-9 (-)	5	11	26	5	0	18
AFP (+) CA19-9 (-)	4	11 <sup>1</sup>	32	6 <sup>1</sup>	0	2 <sup>1</sup>
AFP (-) CA19-9 (+)	0	1	0	0	0	8
Total	9	26	58	12	0	29

<sup>1</sup>Numbers that diagnosis as combined hepatocellular-cholangiocarcinoma (CHC) according to the diagnostic criteria. Alpha-fetoprotein (AFP) (+) = the elevated level of AFP (> 20 ng/mL), AFP (-) = the normal level of AFP (≤ 20 ng/mL), carbohydrate antigen 19-9 (CA19-9) (+) = the elevated level of CA19-9 (> 100 U/mL), CA19-9 (-) = the normal level of CA19-9 (≤ 100 U/mL). HCC: Hepatocellular carcinoma; ICC: Intrahepatic cholangiocarcinoma; LI-RADS: Liver Imaging Reporting and Data System.

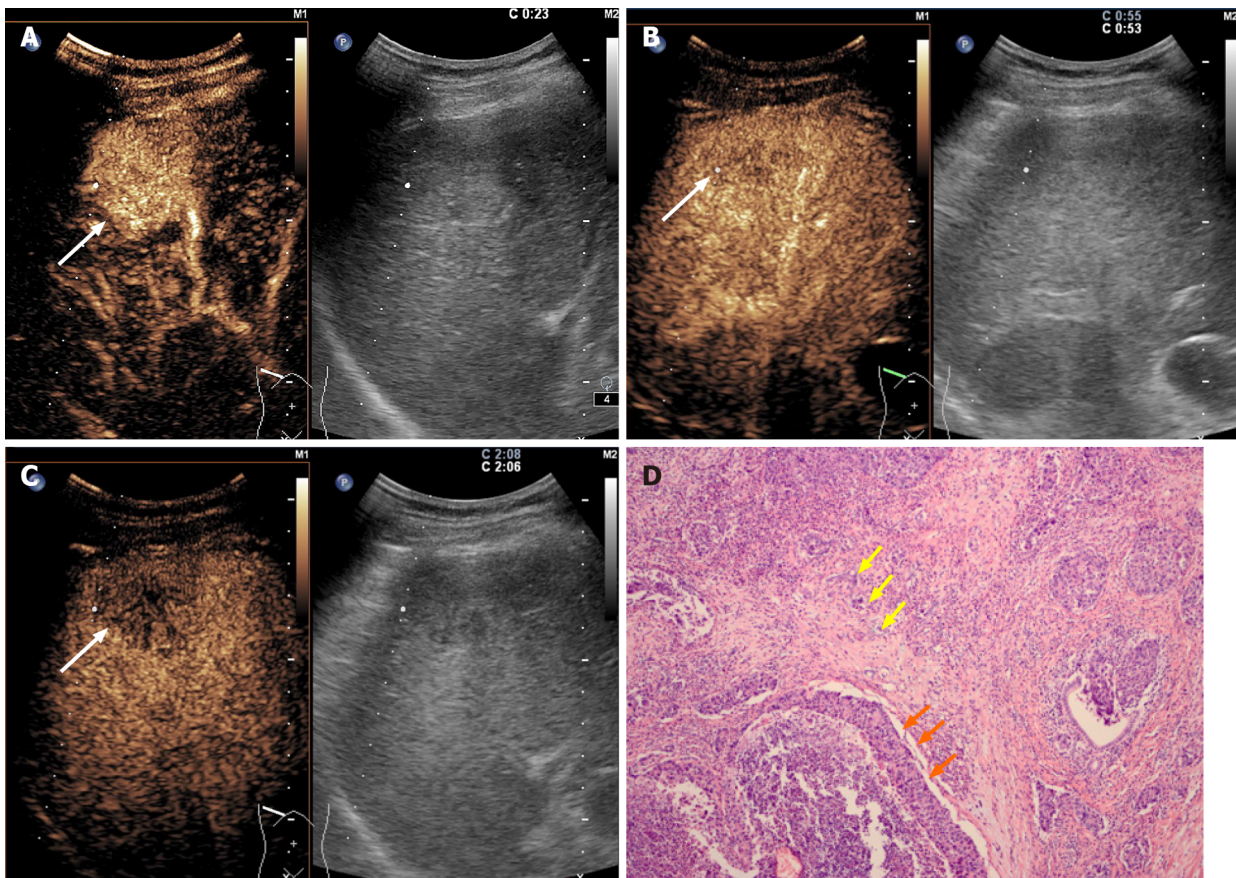
indicating malignancy but not specific for HCC. Biopsy is recommended for the management of LR-M lesions. However, for CHC, the value of biopsy may be limited due to sampling error or tissue insufficiency. In such a scenario, combining CEUS LI-RADS with serum biomarkers could confidently exclude the possibility of CHC if the lesion does not meet the criteria. However, the performance of the diagnostic criteria in this study indicated that differentiation between CHC and HCC or ICC remains challenging.

There are a few limitations to our study. First, this was a single-center retrospective case-control study, which may have potential selection bias. Additional multicenter prospective studies are needed to validate the diagnostic criteria. Second, the sample size was small because of the relatively low incidence of CHC tumors. Third, this study mainly enrolled patients with chronic hepatitis B. Therefore, our results may not be reproducible in patients with other etiologies, especially liver cirrhosis.

**Table 5 Diagnostic test results and modified positive predictive value and negative predictive value according to reported combined hepatocellular-cholangiocarcinoma prevalence**

CHC prevalence, %	AUC	Sensitivity	Specificity	PPV	NPV	Accuracy
26.1% (35/134)	0.649	40.0	89.9	58.3	80.9	76.9
0.4% <sup>[1,13]</sup>				1.6	99.7	
14.2% <sup>[2,3]</sup>				9.6	90.1	

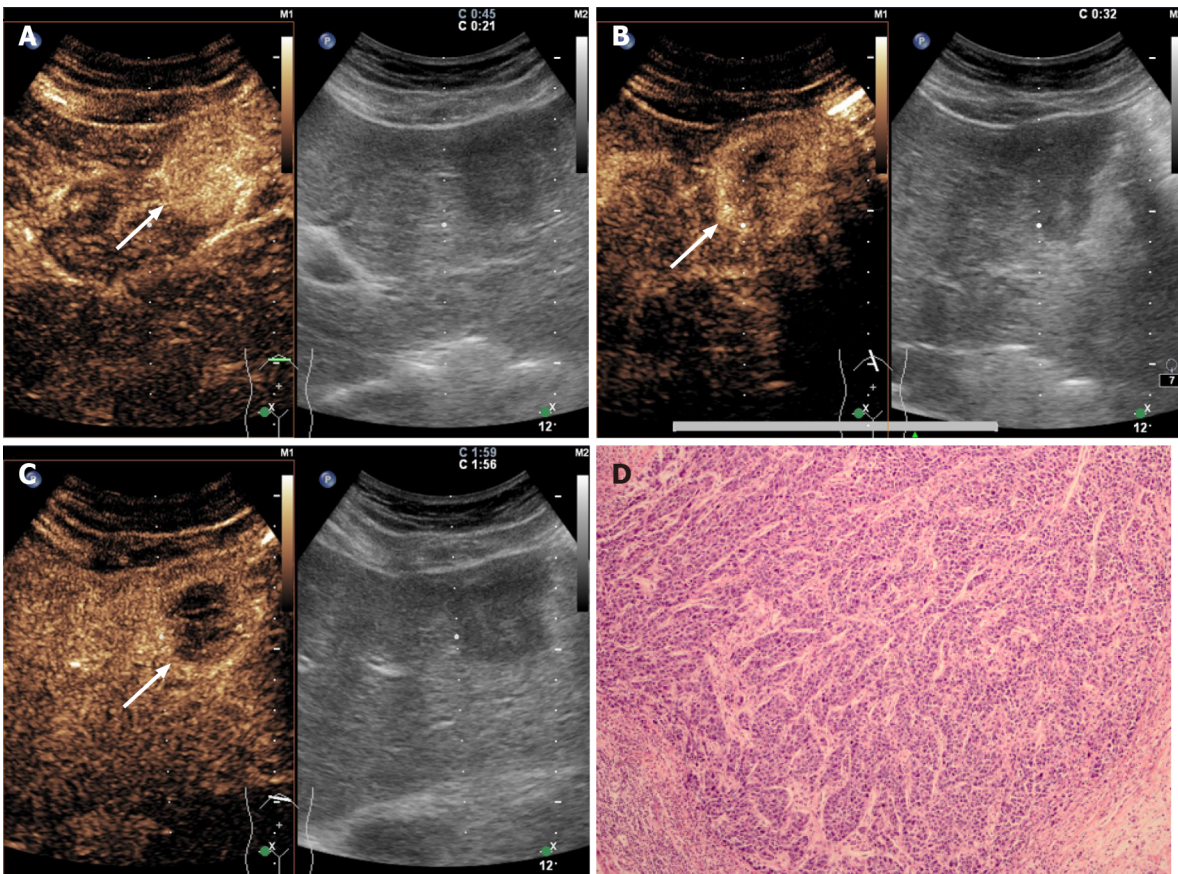
AUC: Area under the curve; CHC: Combined hepatocellular-cholangiocarcinoma; NPV: Negative predictive value; PPV: Positive predictive value.



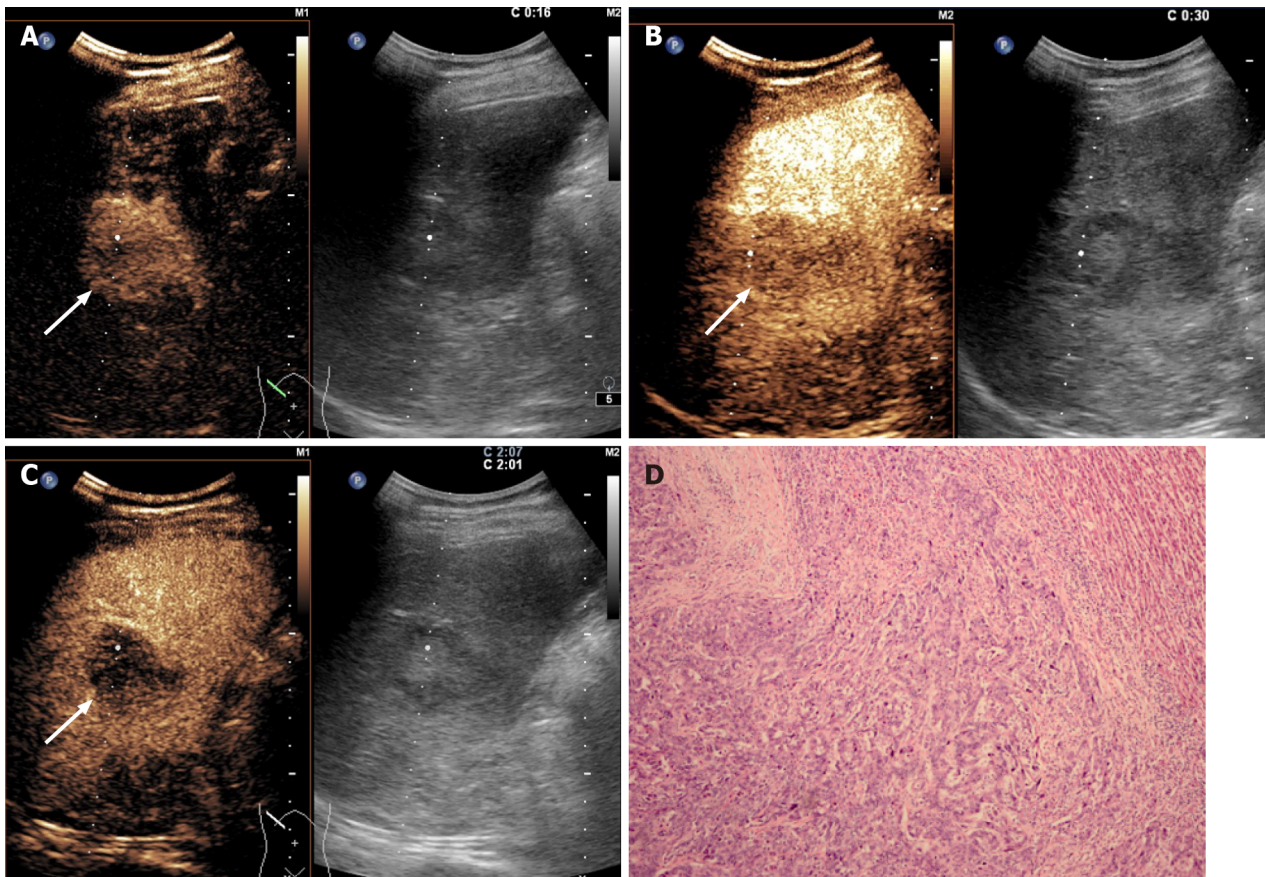
**Figure 2 LR-M nodule in a 54-year-old man with chronic hepatitis B.** A: A nodule with a diameter of 3.6 cm in the right liver lobe was homogeneously hyper-enhanced (arrow) in the arterial phase at contrast-enhanced ultrasound; B: Early washout (53 s) of the contrast agent was observed (arrow); C: Hypo-enhancement (arrow) in the late phase was shown at contrast-enhanced ultrasonography. Elevated alpha-fetoprotein and normal carbohydrate antigen 19-9 level were found by in the serologic data. The nodule was assigned to combined hepatocellular-cholangiocarcinoma lesion according to the diagnostic criteria; D: Both hepatocellular carcinoma (orange arrow) and intrahepatic cholangiocarcinoma (yellow arrow) components were found in histopathologic analysis, resulting in a final diagnosis of combined hepatocellular-cholangiocarcinoma (hematoxylin and eosin staining; magnification, × 100).

## CONCLUSION

In conclusion, CHC could be accurately diagnosed as malignant by CEUS LI-RADS, with the majority of the lesions in the LR-M category. The combination of CEUS LI-RADS classification with serum tumor markers shows high specificity but low sensitivity for the diagnosis of CHC. These findings could help radiologists and clinical investigators confidently exclude CHC lesions in the clinical setting.



**Figure 3** LR-M nodule in a 55-year-old woman with chronic hepatitis B. **A:** A hypoechoic nodule with a diameter of 3.4 cm in the left lobe of the liver was homogeneously hyper-enhanced (arrow) in the arterial phase; **B:** Early washout was observed at 32 s after injection of contrast agent (SonoVue; Bracco); **C:** Hypoenhancement of the whole nodule was demonstrated in the late phase. Serologic data indicated normal alpha-fetoprotein and carbohydrate antigen 19-9 levels. The nodule was assessed as non-combined hepatocellular-cholangiocarcinoma lesion according to the diagnostic criteria; **D:** The nodule was proved to be hepatocellular carcinoma by pathology (hematoxylin and eosin staining; magnification,  $\times 100$ ).



**Figure 4** LR-M nodule in a 46-year-old man with chronic hepatitis B. A: A hypoechoic nodule with a diameter of 3.9 cm in the right lobe of the liver was heterogeneously hyper-enhanced (arrow) in the arterial phase; B: Early washout (30 s) of the contrast agent was observed (arrow); C: Hypo-enhancement of the nodule (arrow) in the late phase was shown at contrast-enhanced ultrasound. The patient had both normal alpha-fetoprotein and carbohydrate antigen 19-9 levels. The lesion was classified as non-combined hepatocellular-cholangiocarcinoma lesion according to the diagnostic criteria; D: Intrahepatic cholangiocarcinoma and cirrhosis of the surrounding liver were confirmed by pathology (hematoxylin and eosin staining; magnification,  $\times 100$ ).

## ARTICLE HIGHLIGHTS

### Research background

Combined hepatocellular-cholangiocarcinoma (CHC) is a rare type of primary liver cancer. Due to its complex histopathological characteristics, the imaging features of CHC may overlap with those of hepatocellular carcinoma (HCC) and intrahepatic cholangiocarcinoma (ICC).

### Research motivation

The contrasted-enhanced ultrasound (CEUS) Liver Imaging Reporting and Data System (LI-RADS) released by the American College of Radiology has been reported to be effective for the diagnosis of HCC. However, CHC lesions meeting the criteria for LR-5 classification may compromise the high specificity of LR-5 for the diagnosis of HCC if we only take the imaging features into consideration. Serum biomarkers, especially alpha-fetoprotein (AFP) and carbohydrate antigen 19-9 (CA19-9), have been shown to be helpful in the diagnosis of CHC. However, whether combining CEUS LI-RADS with serum biomarkers is helpful for differentiating CHC from HCC and ICC in at-risk patients has not been fully evaluated.

### Research objectives

The purpose of this study was to investigate whether the combination of CEUS LI-RADS and serum biomarkers is helpful for differentiating CHC from HCC and ICC in patients with chronic liver disease.

### Research methods

Patients with histologically confirmed CHC, ICC and HCC with chronic liver disease between January 2016 and December 2019 were enrolled in this retrospective case



control study. HCC patients were finally enrolled after one-to-two (CHC:HCC = 1:2) propensity score matching by tumor size, age and sex. Differences in quantitative variables were tested by the independent sample *t*-test. The rates of imaging characteristics were compared by using the  $\chi^2$  test or Fisher's exact test. Receiver operating characteristic curve analysis was used to investigate the potential of CEUS LI-RADS and serum tumor markers for differentiating CHC from HCC and ICC.

### Research results

After propensity score matching, 134 patients (mean age of  $51.4 \pm 9.4$  years, 108 men) were enrolled, including 35 CHC, 29 ICC and 70 HCC patients. Based on the CEUS LI-RADS classification, 74.3% (26/35) and 25.7% (9/35) of CHC lesions were assessed as LR-M and LR-5, respectively. The rates of elevated AFP and CA19-9 levels in CHC patients were 51.4% and 11.4%, respectively. Simultaneous elevation of AFP and CA19-9 was found in 8.6% (3/35) of CHC patients. The sensitivity, specificity, positive predictive value (PPV), negative predictive value (NPV), accuracy and AUC of the aforementioned diagnostic criteria for discriminating CHC from HCC and ICC were 40.0%, 89.9%, 58.3%, 80.9%, 76.9% and 0.649, respectively. When the reported prevalence rate of CHC (0.4%-14.2%) was taken into account, the PPV and NPV were revised to 1.6%-39.6% and 90.1%-99.7%, respectively.

### Research conclusions

CHCs are more likely to be classified as LR-M than LR-5 by CEUS LI-RADS. The combination of the CEUS LI-RADS classification with serum tumor markers shows high specificity but low sensitivity for the diagnosis of CHC. Moreover, CHC could be confidently excluded with a high NPV.

### Research perspectives

The imaging features of CHC are complicated due to its complex histopathological characteristics. In addition, biopsy may misguide the correct diagnosis of CHC due to sampling error or tissue insufficiency. This study investigated the diagnostic value of the CEUS LI-RADS classification combined with serological tumor markers in differentiating CHC from HCC and ICC. The results showed that the combined diagnostic criteria had high specificity and NPV but low sensitivity for the diagnosis of CHC. These findings could help radiologists and clinical investigators confidently exclude CHC lesions in the clinical setting.

---

## ACKNOWLEDGEMENTS

We thank all medical staff and technicians of dialysis centers who agreed to participate in this study.

---

## REFERENCES

- 1 **Wang J**, Wang F, Kessinger A. Outcome of combined hepatocellular and cholangiocarcinoma of the liver. *J Oncol* 2010; **2010** [PMID: 20871663 DOI: 10.1155/2010/917356]
- 2 **Jarnagin WR**, Weber S, Tickoo SK, Koea JB, Obiekwe S, Fong Y, DeMatteo RP, Blumgart LH, Klimstra D. Combined hepatocellular and cholangiocarcinoma: demographic, clinical, and prognostic factors. *Cancer* 2002; **94**: 2040-2046 [PMID: 11932907 DOI: 10.1002/encr.10392]
- 3 **ALLEN RA**, LISA JR. Combined liver cell and bile duct carcinoma. *Am J Pathol* 1949; **25**: 647-655 [PMID: 18152860]
- 4 **Kim MJ**, Lee S, An C. Problematic lesions in cirrhotic liver mimicking hepatocellular carcinoma. *Eur Radiol* 2019; **29**: 5101-5110 [PMID: 30788586 DOI: 10.1007/s00330-019-06030-0]
- 5 **Bosman FT**. WHO classification of tumours of the digestive system 4th ed: Lyon, International Agency for Research on Cancer, 2010
- 6 **Fowler KJ**, Sheybani A, Parker RA 3rd, Doherty S, M Brunt E, Chapman WC, Menias CO. Combined hepatocellular and cholangiocarcinoma (biphenotypic) tumors: imaging features and diagnostic accuracy of contrast-enhanced CT and MRI. *AJR Am J Roentgenol* 2013; **201**: 332-339 [PMID: 23883213 DOI: 10.2214/AJR.12.9488]
- 7 **Sammon J**, Fischer S, Menezes R, Hosseini-Nik H, Lewis S, Taouli B, Jhaveri K. MRI features of combined hepatocellular- cholangiocarcinoma versus mass forming intrahepatic cholangiocarcinoma. *Cancer Imaging* 2018; **18**: 8 [PMID: 29486800 DOI: 10.1186/s40644-018-0142-z]
- 8 **Wells ML**, Venkatesh SK, Chandan VS, Fidler JL, Fletcher JG, Johnson GB, Hough DM, Roberts LR. Biphenotypic hepatic tumors: imaging findings and review of literature. *Abdom Imaging* 2015;

- 40: 2293-2305 [PMID: 25952572 DOI: 10.1007/s00261-015-0433-9]
- 9 **Rogers JE**, Bolonesi RM, Rashid A, Elsayes KM, Elbanan MG, Law L, Kaseb A, Shroff RT. Systemic therapy for unresectable, mixed hepatocellular-cholangiocarcinoma: treatment of a rare malignancy. *J Gastrointest Oncol* 2017; **8**: 347-351 [PMID: 28480073 DOI: 10.21037/jgo.2017.03.03]
  - 10 **Huang XW**, Huang Y, Chen LD, Wang Z, Yang Z, Liu JY, Xie XY, Lu MD, Shen SL, Wang W. Potential diagnostic performance of contrast-enhanced ultrasound and tumor markers in differentiating combined hepatocellular-cholangiocarcinoma from hepatocellular carcinoma and cholangiocarcinoma. *J Med Ultrason (2001)* 2018; **45**: 231-241 [PMID: 29052791 DOI: 10.1007/s10396-017-0834-1]
  - 11 **Li R**, Yang D, Tang CL, Cai P, Ma KS, Ding SY, Zhang XH, Guo DY, Yan XC. Combined hepatocellular carcinoma and cholangiocarcinoma (biphenotypic) tumors: clinical characteristics, imaging features of contrast-enhanced ultrasound and computed tomography. *BMC Cancer* 2016; **16**: 158 [PMID: 26917546 DOI: 10.1186/s12885-016-2156-x]
  - 12 **Sagrini E**, Iavarone M, Stefanini F, Tovoli F, Vavassori S, Maggioni M, Renzulli M, Salvatore V, Stefanescu H, Colombo M, Bolondi L, Piscaglia F. Imaging of combined hepatocellular-cholangiocarcinoma in cirrhosis and risk of false diagnosis of hepatocellular carcinoma. *United European Gastroenterol J* 2019; **7**: 69-77 [PMID: 30788118 DOI: 10.1177/2050640618815378]
  - 13 **Ye J**, Xie X, Liu B, Zhang X, Wang W, Huang X, Lu M, Huang G. Imaging Features on Contrast-Enhanced Ultrasound and Clinical Characteristics of Hepatitis B Virus-Related Combined Hepatocellular-Cholangiocarcinoma: Comparison with Hepatitis B Virus-Related Hepatocellular Carcinoma. *Ultrasound Med Biol* 2017; **43**: 2530-2536 [PMID: 28847498 DOI: 10.1016/j.ultrasmedbio.2017.07.016]
  - 14 **Kassahun WT**, Hauss J. Management of combined hepatocellular and cholangiocarcinoma. *Int J Clin Pract* 2008; **62**: 1271-1278 [PMID: 18284443 DOI: 10.1111/j.1742-1241.2007.01694.x]
  - 15 **Kono Y**, Lyshchik A, Cosgrove D, Dietrich CF, Jang HJ, Kim TK, Piscaglia F, Willmann JK, Wilson SR, Santillan C, Kambadakone A, Mitchell D, Vezeridis A, Sirlin CB. Contrast Enhanced Ultrasound (CEUS) Liver Imaging Reporting and Data System (LI-RADS®): the official version by the American College of Radiology (ACR). *Ultraschall Med* 2017; **38**: 85-86 [PMID: 28249328 DOI: 10.1055/s-0042-124369]
  - 16 **Huang JY**, Li JW, Lu Q, Luo Y, Lin L, Shi YJ, Li T, Liu JB, Lyshchik A. Diagnostic Accuracy of CEUS LI-RADS for the Characterization of Liver Nodules 20 mm or Smaller in Patients at Risk for Hepatocellular Carcinoma. *Radiology* 2020; **294**: 329-339 [PMID: 31793849 DOI: 10.1148/radiol.2019191086]
  - 17 **Lyshchik A**, Kono Y, Dietrich CF, Jang HJ, Kim TK, Piscaglia F, Vezeridis A, Willmann JK, Wilson SR. Contrast-enhanced ultrasound of the liver: technical and lexicon recommendations from the ACR CEUS LI-RADS working group. *Abdom Radiol (NY)* 2018; **43**: 861-879 [PMID: 29151131 DOI: 10.1007/s00261-017-1392-0]
  - 18 **Claudon M**, Dietrich CF, Choi BI, Cosgrove DO, Kudo M, Nolsøe CP, Piscaglia F, Wilson SR, Barr RG, Chammas MC, Chaubal NG, Chen MH, Clevert DA, Correas JM, Ding H, Forsberg F, Fowlkes JB, Gibson RN, Goldberg BB, Lassau N, Leen EL, Mattrey RF, Moriyasu F, Solbiati L, Weskott HP, Xu HX; World Federation for Ultrasound in Medicine; European Federation of Societies for Ultrasound. Guidelines and good clinical practice recommendations for Contrast Enhanced Ultrasound (CEUS) in the liver - update 2012: A WFUMB-EFSUMB initiative in cooperation with representatives of AFSUMB, AIUM, ASUM, FLAUS and ICUS. *Ultrasound Med Biol* 2013; **39**: 187-210 [PMID: 23137926 DOI: 10.1016/j.ultrasmedbio.2012.09.002]
  - 19 **Patel AH**, Harnois DM, Klee GG, LaRusso NF, Gores GJ. The utility of CA 19-9 in the diagnoses of cholangiocarcinoma in patients without primary sclerosing cholangitis. *Am J Gastroenterol* 2000; **95**: 204-207 [PMID: 10638584 DOI: 10.1111/j.1572-0241.2000.01685.x]
  - 20 **Sherman M**, Peltekian KM, Lee C. Screening for hepatocellular carcinoma in chronic carriers of hepatitis B virus: incidence and prevalence of hepatocellular carcinoma in a North American urban population. *Hepatology* 1995; **22**: 432-438 [PMID: 7543434 DOI: 10.1002/hep.1840220210]
  - 21 **Heimbach JK**, Kulik LM, Finn RS, Sirlin CB, Abecassis MM, Roberts LR, Zhu AX, Murad MH, Marrero JA. AASLD guidelines for the treatment of hepatocellular carcinoma. *Hepatology* 2018; **67**: 358-380 [PMID: 28130846 DOI: 10.1002/hep.29086]
  - 22 **Bender R**, Lange S, Freitag G, Trampisch HJ. Variation of sensitivity, specificity, likelihood ratios and predictive values with disease prevalence by H. Brenner and O. *Stat Med* 1998; **17**: 946-948 [PMID: 9595621 DOI: 10.1002/(sici)1097-0258(19980430)17:8<946::aid-sim2823>3.0.co;2-3]
  - 23 **Viera AJ**, Garrett JM. Understanding interobserver agreement: the kappa statistic. *Fam Med* 2005; **37**: 360-363 [PMID: 15883903]
  - 24 **Brunt E**, Aishima S, Clavien PA, Fowler K, Goodman Z, Gores G, Gouw A, Kagen A, Klimstra D, Komuta M, Kondo F, Miksad R, Nakano M, Nakanuma Y, Ng I, Paradis V, Nyun Park Y, Quaglia A, Roncalli M, Roskams T, Sakamoto M, Saxena R, Sempoux C, Sirlin C, Stueck A, Thung S, Tsui WMS, Wang XW, Wee A, Yano H, Yeh M, Zen Y, Zucman-Rossi J, Theise N. cHCC-CCA: Consensus terminology for primary liver carcinomas with both hepatocytic and cholangiocytic differentiation. *Hepatology* 2018; **68**: 113-126 [PMID: 29360137 DOI: 10.1002/hep.29789]
  - 25 **Koh KC**, Lee H, Choi MS, Lee JH, Paik SW, Yoo BC, Rhee JC, Cho JW, Park CK, Kim HJ. Clinicopathologic features and prognosis of combined hepatocellular cholangiocarcinoma. *Am J Surg* 2005; **189**: 120-125 [PMID: 15701504 DOI: 10.1016/j.amjsurg.2004.03.018]

- 26 **Yeh MM.** Pathology of combined hepatocellular-cholangiocarcinoma. *J Gastroenterol Hepatol* 2010; **25**: 1485-1492 [PMID: 20796144 DOI: 10.1111/j.1440-1746.2010.06430.x]
- 27 **Gigante E,** Ronot M, Bertin C, Ciolina M, Bouattour M, Dondero F, Cauchy F, Soubrane O, Vilgrain V, Paradis V. Combining imaging and tumour biopsy improves the diagnosis of combined hepatocellular-cholangiocarcinoma. *Liver Int* 2019; **39**: 2386-2396 [PMID: 31544304 DOI: 10.1111/liv.14261]
- 28 **Wakizaka K,** Yokoo H, Kamiyama T, Ohira M, Kato K, Fujii Y, Sugiyama K, Okada N, Ohata T, Nagatsu A, Shimada S, Orimo T, Kamachi H, Taketomi A. Clinical and pathological features of combined hepatocellular-cholangiocarcinoma compared with other liver cancers. *J Gastroenterol Hepatol* 2019; **34**: 1074-1080 [PMID: 30462849 DOI: 10.1111/jgh.14547]
- 29 **Choi SH,** Lee SS, Park SH, Kim KM, Yu E, Park Y, Shin YM, Lee MG. LI-RADS Classification and Prognosis of Primary Liver Cancers at Gadoxetic Acid-enhanced MRI. *Radiology* 2019; **290**: 388-397 [PMID: 30422088 DOI: 10.1148/radiol.2018181290]
- 30 **Jeon SK,** Joo I, Lee DH, Lee SM, Kang HJ, Lee KB, Lee JM. Combined hepatocellular cholangiocarcinoma: LI-RADS v2017 categorisation for differential diagnosis and prognostication on gadoxetic acid-enhanced MR imaging. *Eur Radiol* 2019; **29**: 373-382 [PMID: 29955948 DOI: 10.1007/s00330-018-5605-x]
- 31 **Trevisani F,** D'Intino PE, Morselli-Labate AM, Mazzella G, Accogli E, Caraceni P, Domenicali M, De Notariis S, Roda E, Bernardi M. Serum alpha-fetoprotein for diagnosis of hepatocellular carcinoma in patients with chronic liver disease: influence of HBsAg and anti-HCV status. *J Hepatol* 2001; **34**: 570-575 [PMID: 11394657 DOI: 10.1016/s0168-8278(00)00053-2]



Published by **Baishideng Publishing Group Inc**  
7041 Koll Center Parkway, Suite 160, Pleasanton, CA 94566, USA

**Telephone:** +1-925-3991568

**E-mail:** [bpgoffice@wjgnet.com](mailto:bpgoffice@wjgnet.com)

**Help Desk:** <https://www.f6publishing.com/helpdesk>

<https://www.wjgnet.com>

