

---

On the anatomy of the breast, by Sir Astley  
Paston Cooper, 1840

Rare Medical Books

---

1840

## On the anatomy of the breast - Plate VI: Of the mammary gland in the rabbit

Sir Astley Paston Cooper , Bart.

Follow this and additional works at: <https://jdc.jefferson.edu/cooper>



Part of the [History of Science, Technology, and Medicine Commons](#)

**Let us know how access to this document benefits you**

---

### Recommended Citation

Cooper, Sir Astley Paston , Bart., "On the anatomy of the breast - Plate VI: Of the mammary gland in the rabbit" (1840). *On the anatomy of the breast, by Sir Astley Paston Cooper, 1840*. Paper 56.  
<https://jdc.jefferson.edu/cooper/56>

This Article is brought to you for free and open access by the Jefferson Digital Commons. The Jefferson Digital Commons is a service of Thomas Jefferson University's [Center for Teaching and Learning \(CTL\)](#). The Commons is a showcase for Jefferson books and journals, peer-reviewed scholarly publications, unique historical collections from the University archives, and teaching tools. The Jefferson Digital Commons allows researchers and interested readers anywhere in the world to learn about and keep up to date with Jefferson scholarship. This article has been accepted for inclusion in On the anatomy of the breast, by Sir Astley Paston Cooper, 1840 by an authorized administrator of the Jefferson Digital Commons. For more information, please contact: [JeffersonDigitalCommons@jefferson.edu](mailto:JeffersonDigitalCommons@jefferson.edu).



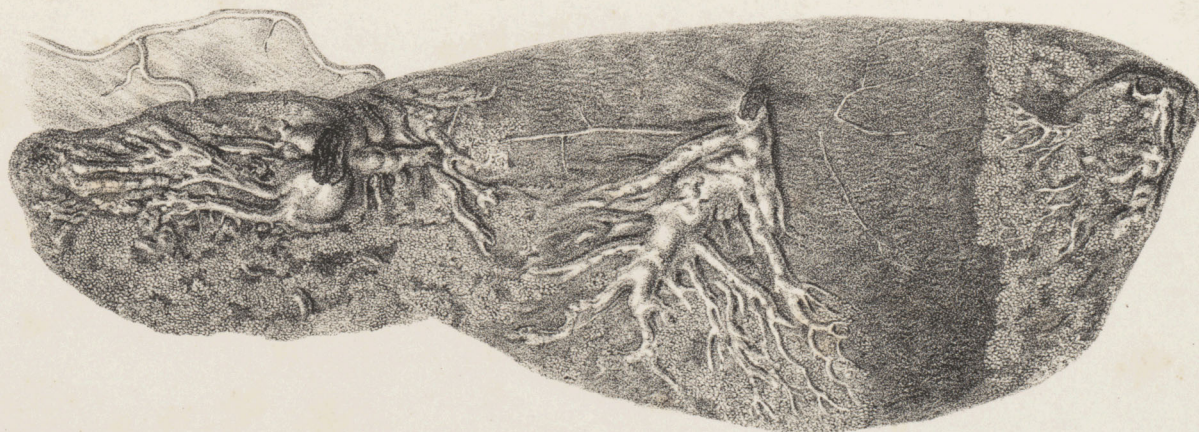
5.



J. Goussier, Printer to the Queen



4.



John Hill del. et lithog.

## PLATE VI.

### *Of the Mammary Gland in the Rabbit.*

- Fig. 1. Shows the general disposition of the glands in the rabbit. There were in this animal eight teats. The glands extended from the neck to the pubes. There were as many distinct glands as nipples as regarded their secretory structure, but they were united by a fibrous tissue.
- Fig. 2. Four ducts injected, showing their reservoirs, which are very large, the lactiferous tubes terminating in them, and numerous glandules on the extreme branches of the duct.
- Fig. 3. A single duct injected with wax, the duct tied at the nipple, and the large reservoir at its basis filled with wax. The ducts are seen proceeding from the reservoirs with glandules at their extremities.
- Fig. 4. These lactiferous ducts and their cells injected with quicksilver.
- Fig. 5. A lactiferous duct injected with mercury to show the cellules, twice magnified.
- Fig. 6. Milk cellules injected with mercury, and twenty times magnified.
-