
On the anatomy of the breast, by Sir Astley
Paston Cooper, 1840

Rare Medical Books

1840

On the anatomy of the breast - Plate V: Mammary glands of the hare

Sir Astley Paston Cooper , Bart.

Follow this and additional works at: <https://jdc.jefferson.edu/cooper>



Part of the [History of Science, Technology, and Medicine Commons](#)

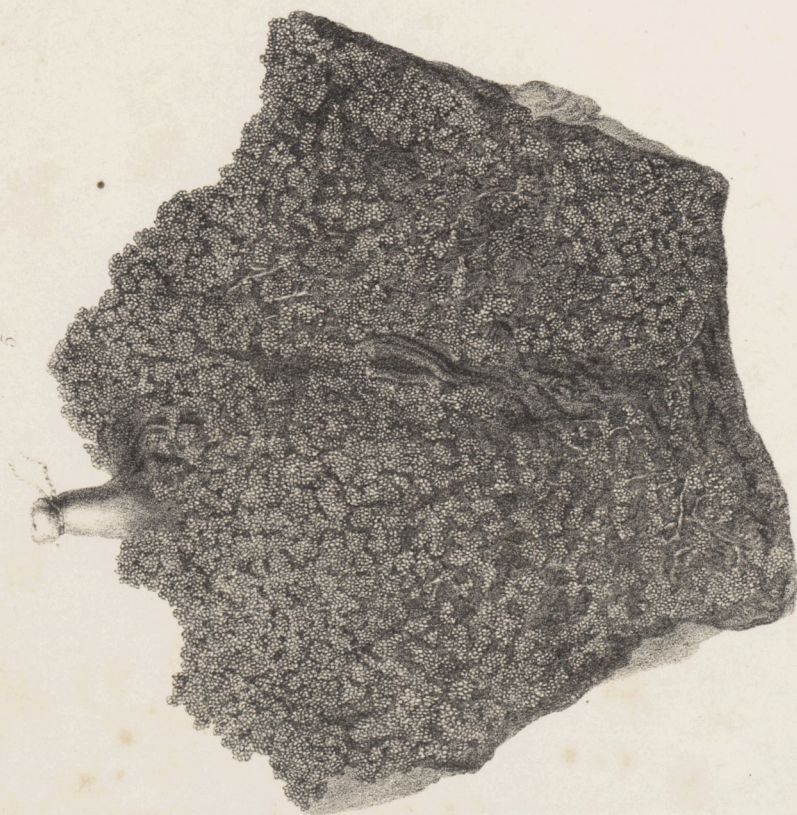
[Let us know how access to this document benefits you](#)

Recommended Citation

Cooper, Sir Astley Paston , Bart., "On the anatomy of the breast - Plate V: Mammary glands of the hare" (1840). *On the anatomy of the breast, by Sir Astley Paston Cooper, 1840*. Paper 55.
<https://jdc.jefferson.edu/cooper/55>

This Article is brought to you for free and open access by the Jefferson Digital Commons. The Jefferson Digital Commons is a service of Thomas Jefferson University's [Center for Teaching and Learning \(CTL\)](#). The Commons is a showcase for Jefferson books and journals, peer-reviewed scholarly publications, unique historical collections from the University archives, and teaching tools. The Jefferson Digital Commons allows researchers and interested readers anywhere in the world to learn about and keep up to date with Jefferson scholarship. This article has been accepted for inclusion in On the anatomy of the breast, by Sir Astley Paston Cooper, 1840 by an authorized administrator of the Jefferson Digital Commons. For more information, please contact: JeffersonDigitalCommons@jefferson.edu.

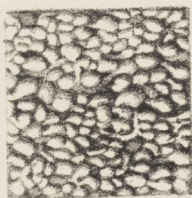
Printed by T. Agnew & Sons, London.



John Smith del. et lithog.



3



6

PL. V

1



2

PLATE V.

Mammary Glands of the Hare.

- Fig. 1.** Shows the general form and disposition of the glands. They reach from the pubes to the cervical extremity of the sternum, and are placed on each side of the linea alba.
There were six nipples to the glands of this hare, three on each side, and a gland to each nipple.
The ducts of one gland do not communicate with another, and the glands are only connected by a fibrous tissue.
- Fig. 2.** Three ducts injected with wax. A reservoir appears at the basis of the nipple. The various milk tubes and glandules are very perceptible.
- Fig. 3.** The duct injected with wax. The duct at the nipple is seen tied. The reservoir is large and distinct. The branches of the milk tubes are shown with numerous glandules on their extreme branches.
- Fig. 4.** Ducts injected with mercury, and around the beginning of the duct from the nipple the milk cells are filled with the injection, but it requires the aid of a lens to observe them distinctly.
- Fig. 5.** A duct and its milk cellules injected with mercury, and magnified twice, by which the cellules are rendered conspicuous.
- Fig. 6.** The milk cellules magnified twenty times.
-