
On the anatomy of the breast, by Sir Astley
Paston Cooper, 1840

Rare Medical Books

1840

On the anatomy of the breast - Plate III: [Untitled]

Sir Astley Paston Cooper , Bart.

Follow this and additional works at: <https://jdc.jefferson.edu/cooper>

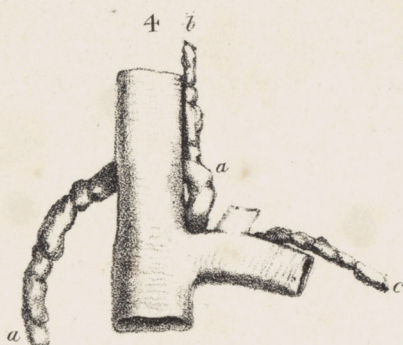
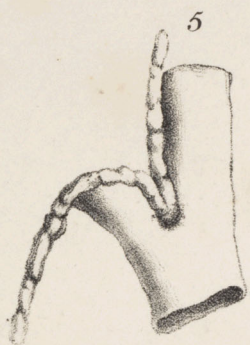
 Part of the [History of Science, Technology, and Medicine Commons](#)

[Let us know how access to this document benefits you](#)

Recommended Citation

Cooper, Sir Astley Paston , Bart., "On the anatomy of the breast - Plate III: [Untitled]" (1840). *On the anatomy of the breast, by Sir Astley Paston Cooper, 1840*. Paper 47.
<https://jdc.jefferson.edu/cooper/47>

This Article is brought to you for free and open access by the Jefferson Digital Commons. The Jefferson Digital Commons is a service of Thomas Jefferson University's [Center for Teaching and Learning \(CTL\)](#). The Commons is a showcase for Jefferson books and journals, peer-reviewed scholarly publications, unique historical collections from the University archives, and teaching tools. The Jefferson Digital Commons allows researchers and interested readers anywhere in the world to learn about and keep up to date with Jefferson scholarship. This article has been accepted for inclusion in *On the anatomy of the breast, by Sir Astley Paston Cooper, 1840* by an authorized administrator of the Jefferson Digital Commons. For more information, please contact: JeffersonDigitalCommons@jefferson.edu.



3

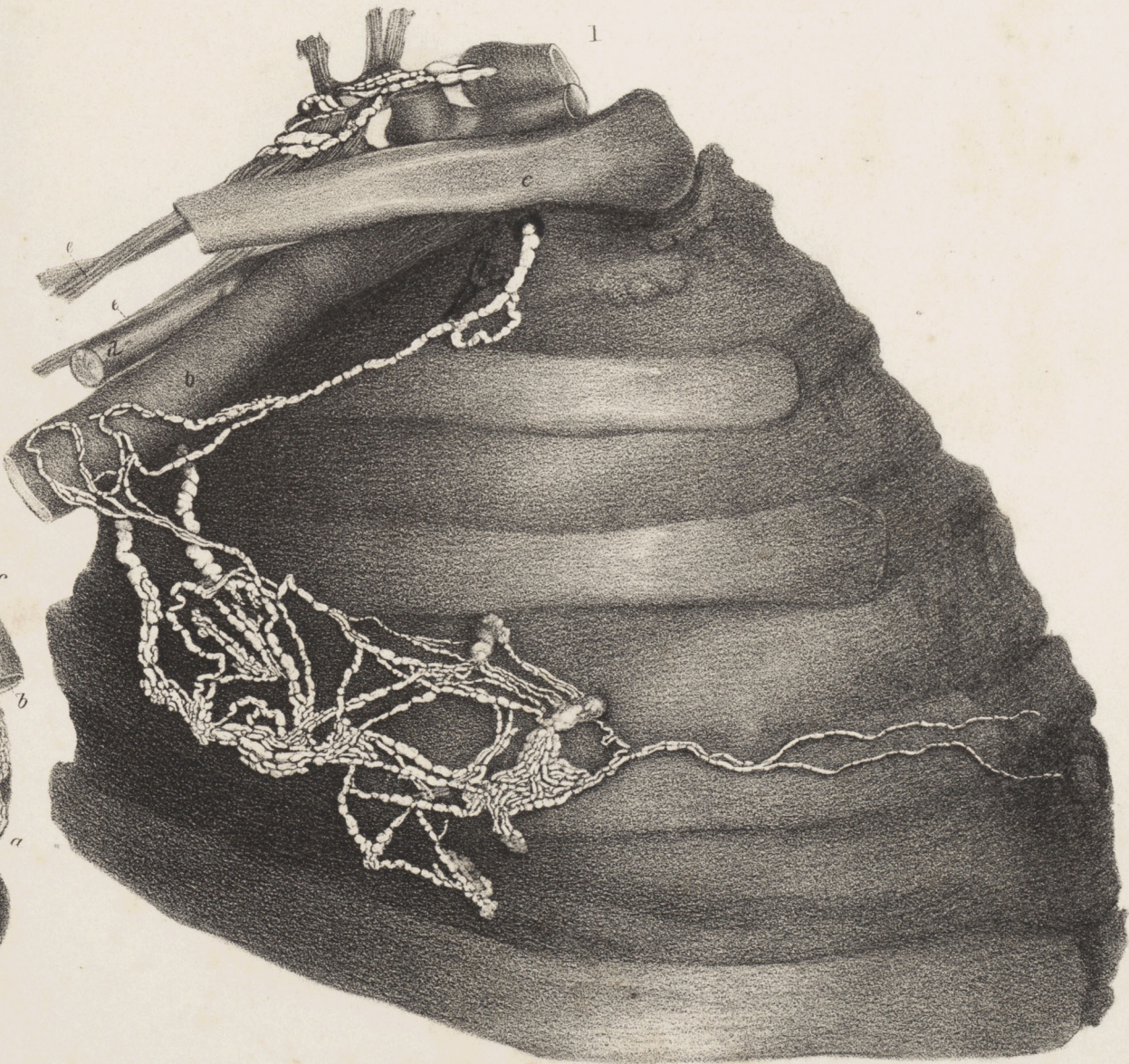
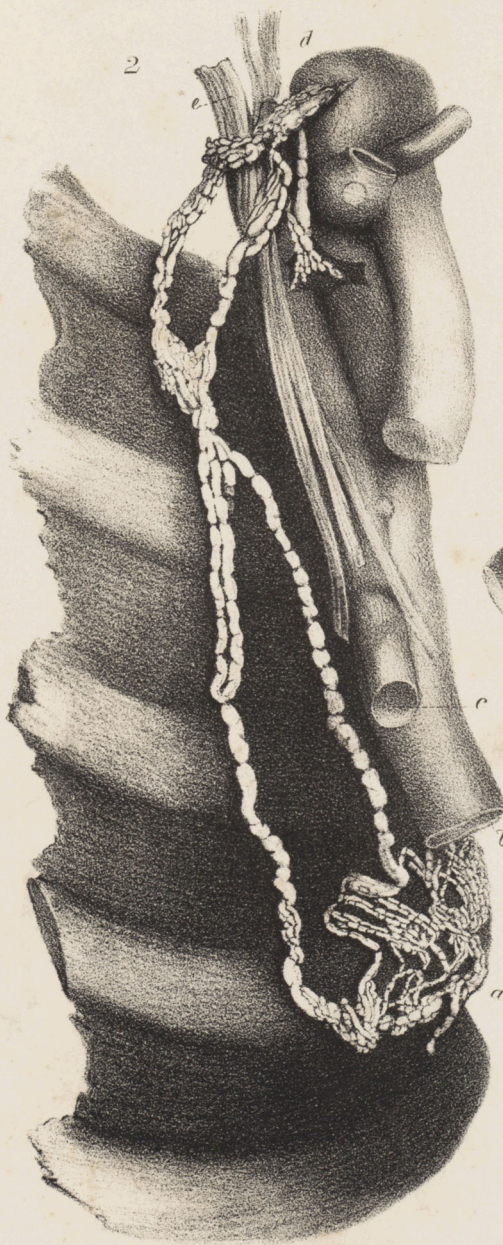
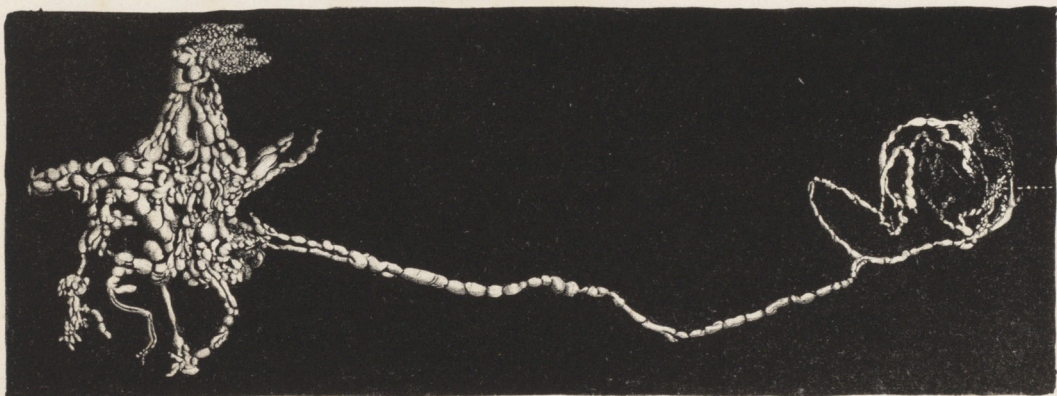


PLATE III.

- Fig. 1.** The absorbents from the nipple to the axilla, placed upon the axillary vein, whence they mount to the under part of the clavicle, passing through the absorbent aperture to terminate in the angle of the conjoined jugular and subclavian veins of the right side, at the lower part of the neck.
- a*, The nipple with two absorbents from it passing upon the fourth rib, and then dividing into numerous branches which cover the intercostal spaces up to the third and down to the fifth rib. They then mount to the third rib to the axillary vein, *b*, and pass on the inner side of that vein under the clavicle, *c*, where they are continued, through the absorbent aperture, into the angle of the jugular and subclavian veins.
- d*, The subclavian artery.
- e, e*, Axillary plexus of nerves.
- Fig. 2.** Shows the absorbent *a*, of fig. 1, passing under the blood-vessels, *b*, the axillary vein, *c*, the artery, across four of the upper ribs, joining with the anterior, entering the angle of the jugular and subclavian of the right side at *d*.
- e*, The axillary plexus of nerves.
- Fig. 3.** *a*, Absorbents from the nipple and areola passing into a cluster of absorbents in the axilla, to an absorbent gland there.
- Fig. 4.** A diagram of the termination of the absorbents of the arm and breast, *a*, thoracic duct and its termination, *b, b*, the absorbents of the neck on the left side, *c*, absorbents of the arm.
- Fig. 5.** This diagram shows the termination of the absorbents from the arm and neck on the right side, in the angle of the jugular and subclavian vein.