
On the anatomy of the breast, by Sir Astley
Paston Cooper, 1840

Rare Medical Books

1840

On the anatomy of the breast - Plate II: [Untitled]

Sir Astley Paston Cooper , Bart.

Follow this and additional works at: <https://jdc.jefferson.edu/cooper>



Part of the [History of Science, Technology, and Medicine Commons](#)

[Let us know how access to this document benefits you](#)

Recommended Citation

Cooper, Sir Astley Paston , Bart., "On the anatomy of the breast - Plate II: [Untitled]" (1840). *On the anatomy of the breast, by Sir Astley Paston Cooper, 1840*. Paper 46.
<https://jdc.jefferson.edu/cooper/46>

This Article is brought to you for free and open access by the Jefferson Digital Commons. The Jefferson Digital Commons is a service of Thomas Jefferson University's [Center for Teaching and Learning \(CTL\)](#). The Commons is a showcase for Jefferson books and journals, peer-reviewed scholarly publications, unique historical collections from the University archives, and teaching tools. The Jefferson Digital Commons allows researchers and interested readers anywhere in the world to learn about and keep up to date with Jefferson scholarship. This article has been accepted for inclusion in On the anatomy of the breast, by Sir Astley Paston Cooper, 1840 by an authorized administrator of the Jefferson Digital Commons. For more information, please contact: JeffersonDigitalCommons@jefferson.edu.

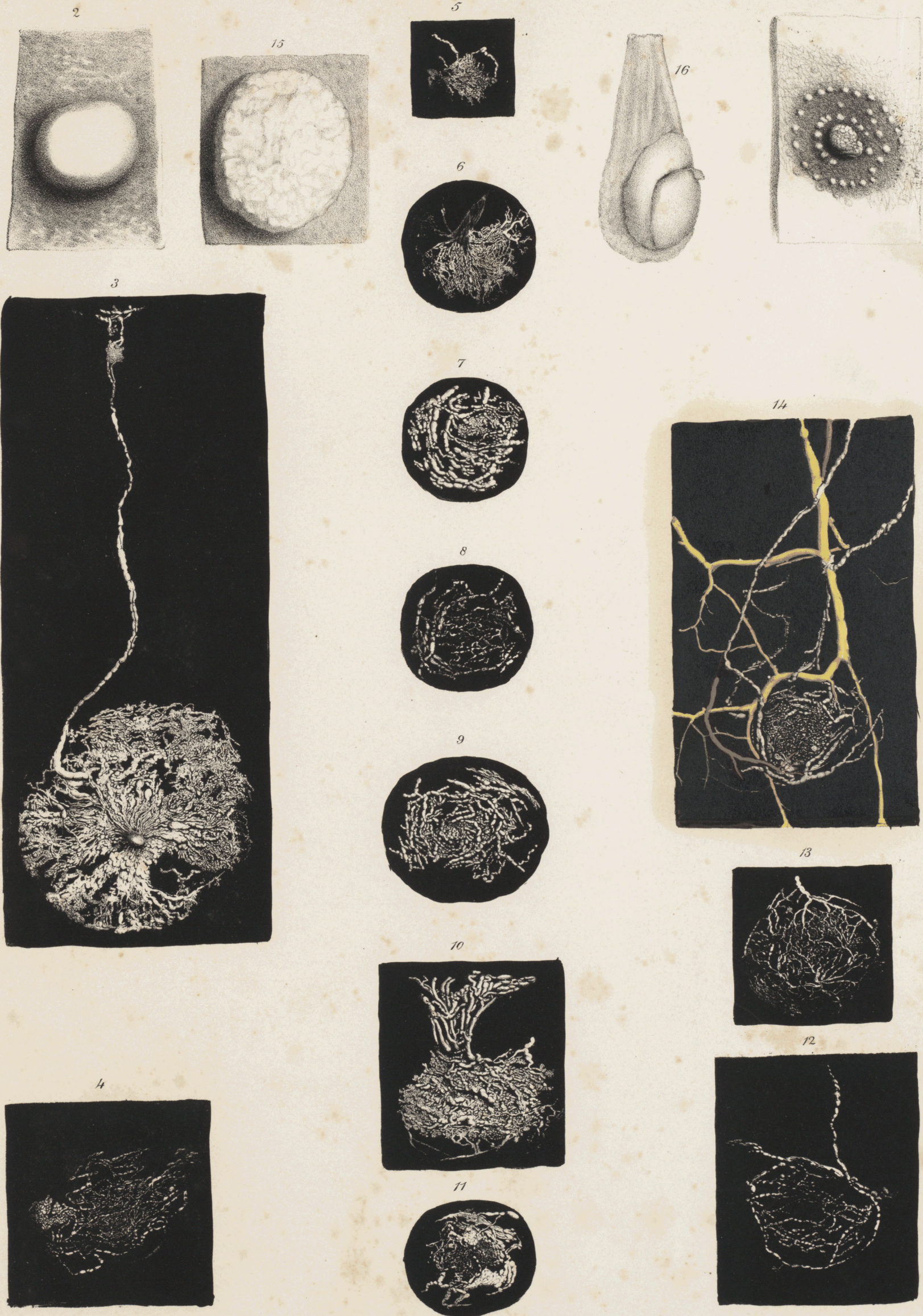


PLATE II.

- Fig. 1. Nipple, areola, and tubercles, shown in the adult male.
- Fig. 2. Internal view of the gland.
- Fig. 3. Ducts of the male gland injected from the nipple to the circumference, with an absorbent vessel springing from the mammary gland and passing to a gland in the axilla, from which other absorbent vessels are seen to arise. This is the most perfect preparation of the male gland which I possess.
- Fig. 4. Absorbent vessels from the male gland, showing their number, their minute division, and the cellular appearance of their beginnings.
- Fig. 5. A cluster of absorbents from the male breast.
- Fig. 6. The same appearances, only the vessels are more numerous.
- Fig. 7. Larger absorbents.
- Fig. 8. A cluster of small and large absorbents.
- Fig. 9. A cluster of absorbents arising from the nipple, and spread under the areola.
- Fig. 10. Cells and vessels of the gland, with numerous absorbents.
- Fig. 11. A cluster of minute absorbents.
- Fig. 12. A cluster of absorbent vessels surrounding the nipple, and placed under the areola, two absorbents passing from them.
- Fig. 13. A cluster of small absorbents from the nipple, with larger surrounding them
- Fig. 14. Cells of the male gland injected; several absorbents arising from them accompany the veins, and sometimes cross them.
- Fig. 15. A large male breast seen in posterior view on the inner side of the cutis.
- Fig. 16. The testis of the same subject of remarkably small size; all the drawings in this Plate being of the natural dimensions of the preparations.