
On the anatomy of the breast, by Sir Astley
Paston Cooper, 1840

Rare Medical Books

1840

On the anatomy of the breast - Plate XIV: [Untitled]

Sir Astley Paston Cooper , Bart.

Follow this and additional works at: <https://jdc.jefferson.edu/cooper>



Part of the [History of Science, Technology, and Medicine Commons](#)

[Let us know how access to this document benefits you](#)

Recommended Citation

Cooper, Sir Astley Paston , Bart., "On the anatomy of the breast - Plate XIV: [Untitled]" (1840). *On the anatomy of the breast, by Sir Astley Paston Cooper, 1840*. Paper 43.

<https://jdc.jefferson.edu/cooper/43>

This Article is brought to you for free and open access by the Jefferson Digital Commons. The Jefferson Digital Commons is a service of Thomas Jefferson University's [Center for Teaching and Learning \(CTL\)](#). The Commons is a showcase for Jefferson books and journals, peer-reviewed scholarly publications, unique historical collections from the University archives, and teaching tools. The Jefferson Digital Commons allows researchers and interested readers anywhere in the world to learn about and keep up to date with Jefferson scholarship. This article has been accepted for inclusion in *On the anatomy of the breast, by Sir Astley Paston Cooper, 1840* by an authorized administrator of the Jefferson Digital Commons. For more information, please contact: JeffersonDigitalCommons@jefferson.edu.

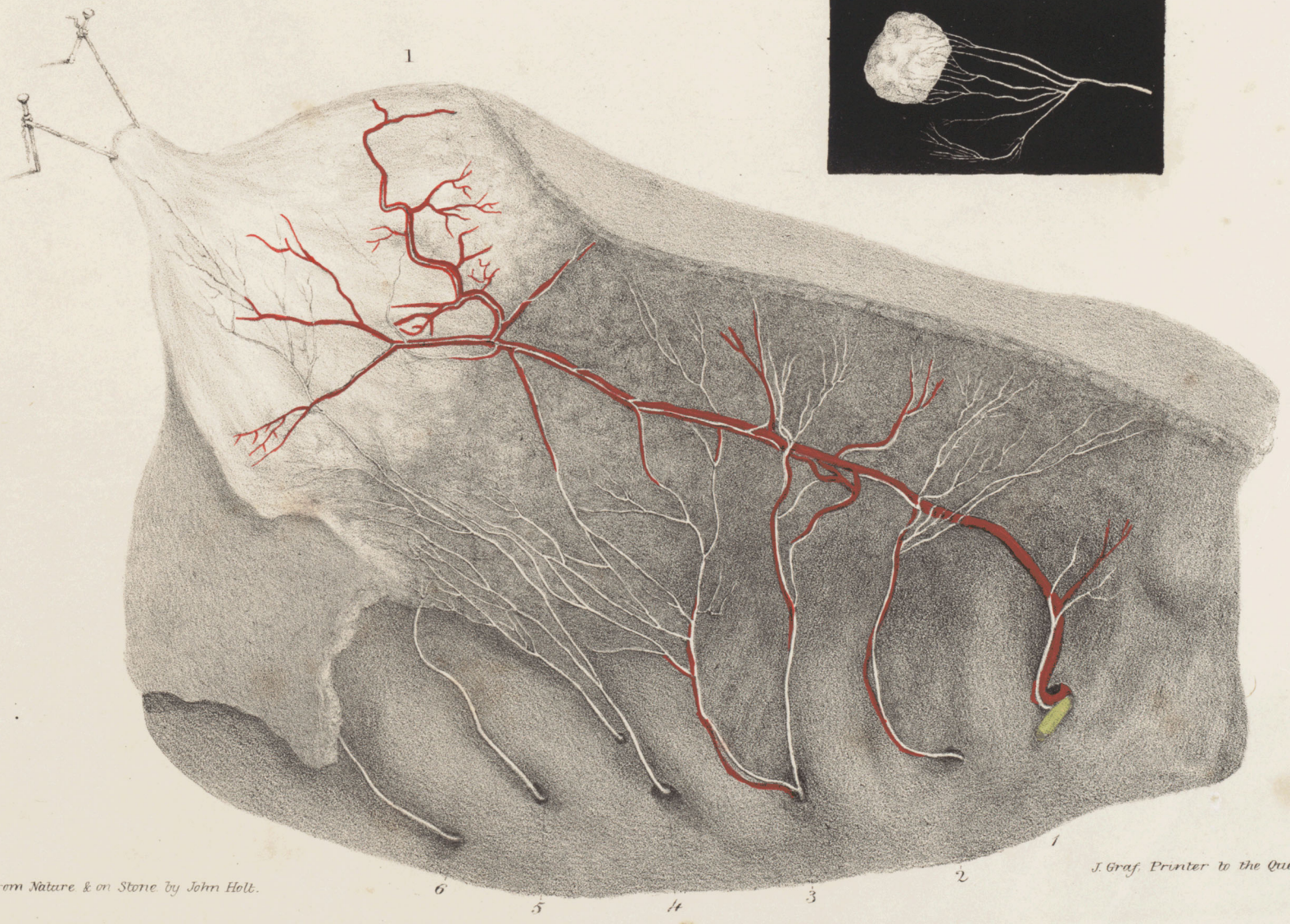
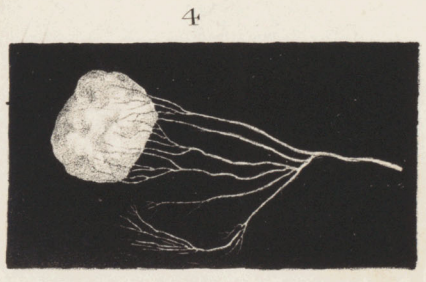
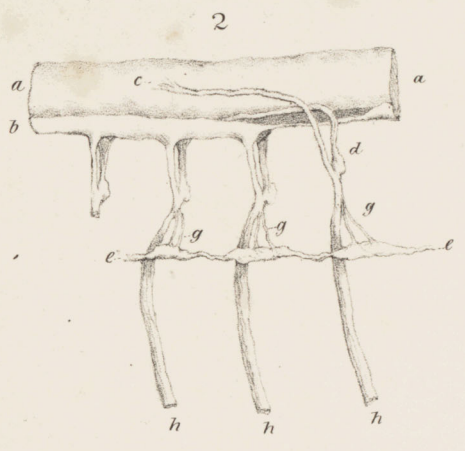


PLATE XIV.

- Fig. 1. Female. Shows the anterior or reflected nerves of the breast, 1, 2, 3, 4, 5, 6. No. 1 emerging from between the cartilages of the first and second ribs, with a branch of the internal mammary artery, and descending with that artery towards the breast. No. 2 passing to the skin at the upper part of the chest. No. 3 dividing into two branches, one going to the skin above the breast, the other descending upon the anterior artery to the upper part of the breast. No. 4 forms two nerves, which pass upon the gland of the breast, towards the basis of the nipple, upon which its extreme branches are distributed. No. 5 joins the fourth. No. 6 goes to the skin below the breast.
- Fig. 2. Shows the spinal cord, with the manner in which the dorsal nerves proceed from it. *a, a*, Spinal cord. *b*, Sheath of the dura mater. *c*, Anterior nerve. *d*, Posterior nerve with its ganglion. *e, e*, Grand sympathetic nerve, with its ganglion, from which proceed two filaments, *g, g, g*, to each of the dorsal nerves. *h, h, h*, The dorsal nerves.
- Fig. 3. Male gland. *a*, An artery. *b*, Fourth nerve going to the gland. *c*, Fifth nerve: these are posterior nerves. *d*, The anterior or reflected fourth nerve, going to the basis of the nipple, and accompanied by an artery.
- Fig. 4. Shows the fourth posterior nerve of the male gland, to which it is distributed.
- Fig. 5. Shows the arteries of the male. The arteries and the nerves are so much connected in their distribution, that I have, in this plate, upon the nerves, given an outline of the arteries, from one of my preparations viewed posteriorly. *a, a*, The clavicle. *b*, Subclavian, and *c*, the axillary artery. *d*, Thoracica longa. *e*, External mammary artery, going to the nipple. *f*, Thoracica suprema. *g, h, i, k*, Branches of the internal mammary artery, of which *i* is going to the nipple.