
On the anatomy of the breast, by Sir Astley
Paston Cooper, 1840

Rare Medical Books

1840

On the anatomy of the breast - Plate XIII: [Untitled]

Sir Astley Paston Cooper , Bart.

Follow this and additional works at: <https://jdc.jefferson.edu/cooper>



Part of the [History of Science, Technology, and Medicine Commons](#)

[Let us know how access to this document benefits you](#)

Recommended Citation

Cooper, Sir Astley Paston , Bart., "On the anatomy of the breast - Plate XIII: [Untitled]" (1840). *On the anatomy of the breast, by Sir Astley Paston Cooper, 1840*. Paper 42.

<https://jdc.jefferson.edu/cooper/42>

This Article is brought to you for free and open access by the Jefferson Digital Commons. The Jefferson Digital Commons is a service of Thomas Jefferson University's [Center for Teaching and Learning \(CTL\)](#). The Commons is a showcase for Jefferson books and journals, peer-reviewed scholarly publications, unique historical collections from the University archives, and teaching tools. The Jefferson Digital Commons allows researchers and interested readers anywhere in the world to learn about and keep up to date with Jefferson scholarship. This article has been accepted for inclusion in *On the anatomy of the breast, by Sir Astley Paston Cooper, 1840* by an authorized administrator of the Jefferson Digital Commons. For more information, please contact: JeffersonDigitalCommons@jefferson.edu.

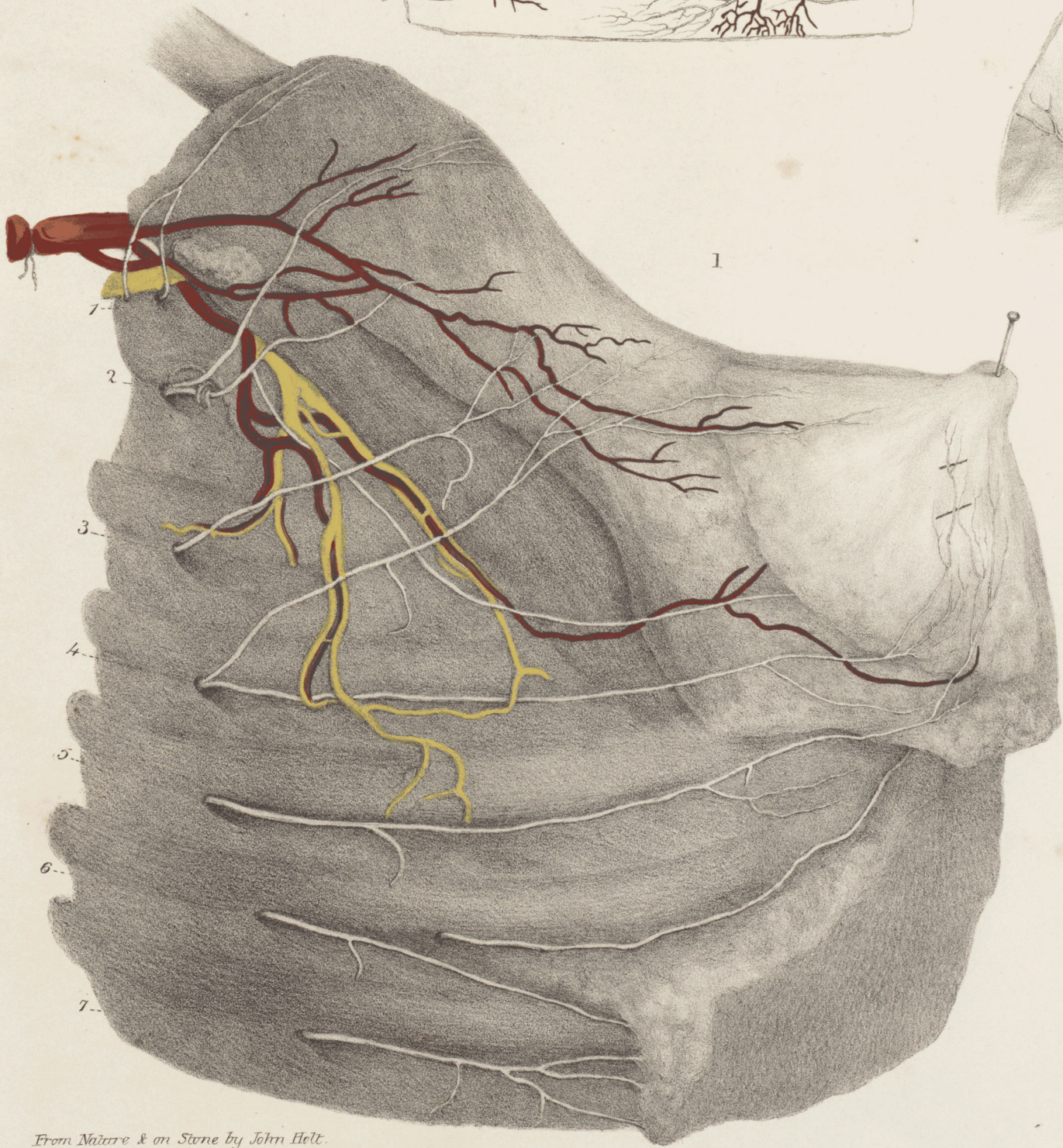
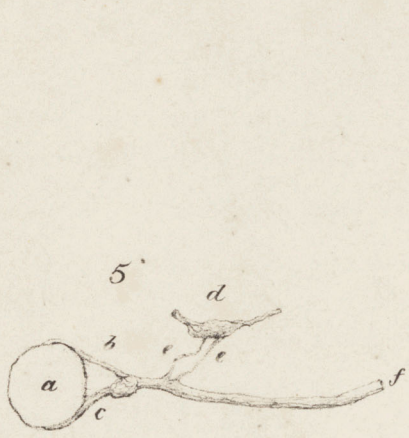


PLATE XIII.

- Fig. 1. The dorsal direct or posterior nerve going to the breast. 1, Is the first nerve going to the pectoral muscle. 2, The second nerve passing to the external mammary artery. This nerve in the subject before us sent a large branch to the mammary gland descending in the course of the arteria thoracica longa. 3, The third nerve passing to the external mammary artery. 4, The fourth nerve dividing into two branches, the upper branch passing on the external mammary artery to the breast; the lower branch proceeding upon the surface of the breast to the nipple. 5, Passing to the gland of the breast and to the base of the nipple, joining the fourth. 6, In this subject two nerves, the upper going to the vessels below the breast, the lower to the skin below it. 7, The seventh is distributed much below the breast.
- Fig. 2. Shows the fourth posterior nerve coming out of the chest below the fourth rib, and proceeding to the gland of the breast and to the nipple.
- Fig. 3. The fourth anterior or reflected nerve passing from the chest between the cartilages of the ribs, and turning back to the basis of the nipple, where it is distributed to the skin and upon the branches of arteries.
- Fig. 4. The arteries and nerves of the breast of a child. Arteries: *a*, Thoracica longa. *b, b*, External mammary artery. *c, d, e, f, g*, Anterior arteries from the internal mammary. Nerves: Posterior or direct, 2, 3, 4, 5, 6; the third, fourth, and fifth, going to the nipple and breast: 7, 8, 9, 10, 11, point to the anterior or reflected nerves, of which fig. 10, goes directly to the base of the nipple, fig. 9, upon the artery which descends to the breast.

Fig. 5. Outline of a dorsal nerve proceeding from the spinal cord. *a*, Spinal cord. *b*, Anterior nerve. *c*, Posterior or ganglionic, joining with *b* to form the dorsal nerve. *d*, Sympathetic nerve and one of its ganglia. *e, e*, Two filaments from the grand sympathetic joining the dorsal nerve beyond the ganglion. *f*, The dorsal nerve. Upon this principle the dorsal nerves are formed.
