
On the anatomy of the breast, by Sir Astley
Paston Cooper, 1840

Rare Medical Books

1840

On the anatomy of the breast - Plate XI: Absorbent vessels

Sir Astley Paston Cooper , Bart.

Follow this and additional works at: <https://jdc.jefferson.edu/cooper>



Part of the [History of Science, Technology, and Medicine Commons](#)

[Let us know how access to this document benefits you](#)

Recommended Citation

Cooper, Sir Astley Paston , Bart., "On the anatomy of the breast - Plate XI: Absorbent vessels" (1840). *On the anatomy of the breast, by Sir Astley Paston Cooper, 1840*. Paper 40.
<https://jdc.jefferson.edu/cooper/40>

This Article is brought to you for free and open access by the Jefferson Digital Commons. The Jefferson Digital Commons is a service of Thomas Jefferson University's [Center for Teaching and Learning \(CTL\)](#). The Commons is a showcase for Jefferson books and journals, peer-reviewed scholarly publications, unique historical collections from the University archives, and teaching tools. The Jefferson Digital Commons allows researchers and interested readers anywhere in the world to learn about and keep up to date with Jefferson scholarship. This article has been accepted for inclusion in *On the anatomy of the breast, by Sir Astley Paston Cooper, 1840* by an authorized administrator of the Jefferson Digital Commons. For more information, please contact: JeffersonDigitalCommons@jefferson.edu.

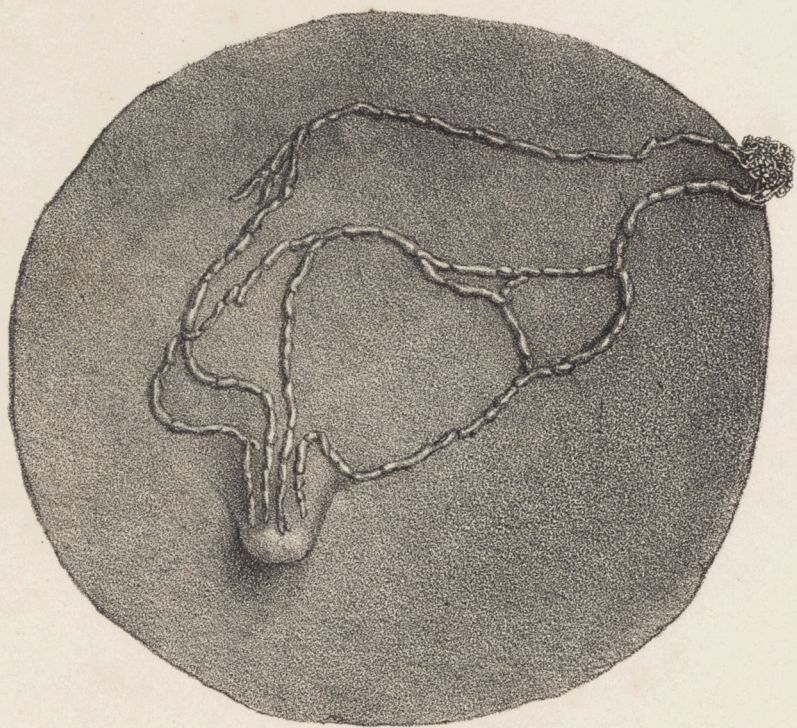


PLATE XI.

Absorbent Vessels.

Fig. 1. The absorbent vessels of the female breast from the nipple to the clavicle, with the artery, vein, and nerves.

a, The clavicle.

b, b, The sternum.

c, The nipple, with an absorbent vessel proceeding from it, and two others from the gland of the breast. They pass upon the intercostal muscles between the second and third ribs; then descend over the third rib to the intercostal muscles between the third and the fourth ribs. They then ascend to the second rib, and pass upon the inner side of the axillary vein; continuing over the intercostal muscles below the first rib, they form a trunk which proceeds under the clavicle, through the absorbent aperture, into the junction of the right jugular and subclavian veins.

e, The axillary artery, with the axillary vein, *f*, upon its inner side.

g, g, The axillary plexus of nerves.

Fig. 2. Absorbents of the nipple, and of the breast. Beginning at the root of the nipple, four of them being here injected, they pass over the surface of the breast towards the axilla, and there enter an absorbent gland; after which they pass as in fig. 1.

Fig. 3. The internal absorbents of the gland injected from various parts of the breast, and terminating in two absorbents in the axilla. The lactiferous tubes are also partially injected, and may be seen under the absorbent vessels.