

2007

Overview from the Chairman

Follow this and additional works at: <https://jdc.jefferson.edu/jss>



Part of the [Surgery Commons](#)

[Let us know how access to this document benefits you](#)

Recommended Citation

(2007) "Overview from the Chairman," *Jefferson Surgical Solutions*: Vol. 2 : Iss. 1 , Article 2.
Available at: <https://jdc.jefferson.edu/jss/vol2/iss1/2>

This Article is brought to you for free and open access by the Jefferson Digital Commons. The Jefferson Digital Commons is a service of Thomas Jefferson University's [Center for Teaching and Learning \(CTL\)](#). The Commons is a showcase for Jefferson books and journals, peer-reviewed scholarly publications, unique historical collections from the University archives, and teaching tools. The Jefferson Digital Commons allows researchers and interested readers anywhere in the world to learn about and keep up to date with Jefferson scholarship. This article has been accepted for inclusion in *Jefferson Surgical Solutions* by an authorized administrator of the Jefferson Digital Commons. For more information, please contact: JeffersonDigitalCommons@jefferson.edu.

Overview from the Chairman

Charles J. Yeo, MD
Samuel D. Gross Professor and
Chair, Department of Surgery

It's great to have a new academic year underway, and also review the past year's accomplishments.

On the clinical side, there has been fine growth of programs in Endovascular, Minimally Invasive, Hepatopancreaticobiliary, Transplant, Cardiothoracic and Trauma Surgery. We had a superb Residency Review Committee site visit, receiving five-year accreditation and a commendation for educational initiatives. Our complex case volume has grown by approximately 40%. The SICU has doubled in size, and we've expanded to a satellite office at St. Agnes, adjacent to Methodist Hospital.

On the research front, 41 research grants were submitted and we currently have 15 funded research projects. The largest grant came from the American College of Surgeons and went to Dr. Arafat for her work in pancreatic carcinogenesis.

A paper by Drs. Grabo, Kairys, and DiMuzio on endovascular procedures, presented at the American Surgical Association in April, was recently published in the Annals of Surgery. Drs. Arafat and Kennedy presented at the Southern Surgical Association, and Dr. Tarola presented at the American Association of Plastic Surgery. Furthermore, during Digestive Disease Week, we had three oral presentations and 10 poster presentations!

The new J. Wallace and Gail G. Davis Professorship supports Dr. Thomas Tulenko in his role as Director of the Division of Surgical Research.

This has been a year of growth and some change, but a year of overall stability and productivity!

Overview



CHARLES J. YEO, MD
Samuel D. Gross Professor and
Chair, Department of Surgery

It's great to have a new academic year underway, and also review the past year's accomplishments.

On the clinical side, there has been fine growth of programs in Endovascular, Minimally Invasive, Hepatopancreatic-obiliary, Transplant, Cardiothoracic and Trauma Surgery. We had a superb Residency Review Committee site visit, receiving five-year accreditation and a commendation for educational initiatives. Our complex case volume has grown by approximately 40%. The SICU has doubled in size, and we've expanded to a satellite office at St. Agnes, adjacent to Methodist Hospital.

On the research front, 41 research grants were submitted and we currently have 15 funded research projects. The largest grant came from the American College of Surgeons and went to Dr. Arafat for her work in pancreatic carcinogenesis.

A paper by Drs. Grabo, Kairys, and DiMuzio on endovascular procedures, presented at the American Surgical Association in April, was recently published in the *Annals of Surgery*. Drs. Arafat and Kennedy presented at the Southern Surgical Association, and Dr. Tarola presented at the American Association of Plastic Surgery. Furthermore, during Digestive Disease Week, we had three oral presentations and 10 poster presentations!

The new J. Wallace and Gail G. Davis Professorship supports Dr. Thomas Tulenko in his role as Director of the Division of Surgical Research.

This has been a year of growth and some change, but a year of overall stability and productivity!

Clinical integration



Women who visit Jefferson-Honickman Breast Imaging enjoy personalized, state-of-the-art care that is tailored to the unique issues and concerns of their particular age group.

Comprehensive Breast Program Continues to Set the Trend

Jefferson continues to set the trend in breast care with the opening of Jefferson-Honickman Breast Imaging, located on the 4th floor at 1100 Walnut Street, in January 2007. This is the first phase of a three phase facility project that will provide our patients with the most advanced expertise and technology as well as personalized patient care in a warm and comfortable environment. The remaining phases of the Jefferson Breast Care project include breast screening, an MRI and a center for clinical, educational and support services.

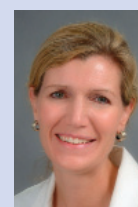
With the growth of a comprehensive breast care program, Jefferson Surgeons continue to be at the forefront of care. The surgical practices of Drs. Gordon Schwartz, MD, MBA, Anne Rosenberg, MD, and Kristin Brill, MD are dedicated to breast surgery. Several general surgeons also specialize in breast surgery including Adam Berger, MD, Karen Chojnacki, MD, Melvin Moses MD, Bernadette Profeta, MD, and Gary Rosato, MD.

Dr. Rosenberg emphasizes the comprehensive, multidisciplinary services available at Jefferson. "From prevention and genetic screening programs to early detection as well as surgical and non-surgical treatment options, we offer the entire spectrum of the best of what medical care has to offer today."



Anne Rosenberg, MD

Dr. Brill explains that we are planning the new Jefferson Breast Care Facility to create an easy, stress-free experience for patients. "The program emphasizes communication between patient and doctor, but also among surgeons, radiologists, nurses, technologists, and other healthcare providers," she says. "The art of what we do is to reassure women that treatment can be customized to suit their particular situation, lifestyle, and stage of life."

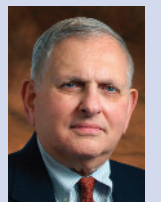


Kristin Brill, MD

Thanks to the skills of our plastic surgeons, James Fox, MD, John H. Moore MD, Stephen Copit, MD, and Gary Tuma, MD, Jefferson leads national trends relating to mastectomy and reconstruction, including LAT Flap (Latissimus Dorsi Myocutaneous Flap) reconstructions. "LAT Flaps" can be much easier for women to live with than the more traditional TRAM Flap reconstruction that requires taking skin, muscle and fat from the abdomen. Nationally, 30 to 35 percent of women have breast reconstruction immediately following a mastectomy. Jefferson's rate for patients over the age of 65 is even higher than that. "We show no age bias," says Dr. Brill, "and equally encourage our older and younger patients to take advantage of the excellent team of plastic surgeons."

Jefferson surgeons are educators and leaders in the field. Dr. Schwartz organizes a highly respected biennial international breast cancer Consensus Conference. "We do this to bring together the best experts to discuss and debate a chosen topic and ensure that the latest treatments are available to patients worldwide," explains Dr. Schwartz. The Jefferson program also offers one of only 30 breast surgery fellowships across the country.

Visit www.jeffersonhospital.org/breast for more information.



Gordon Schwartz, MD, MBA

Please welcome

MEET OUR SURGICAL INTERNS

Jefferson surgeons are currently assisted by an exceptional group of categorical interns. These doctors, who recently matched with Jefferson, started on June 20, 2007 (shown left to right):

Allison Goldberg, MD, Albert Einstein College of Medicine; Adam Bodzin, MD, Boston University School of Medicine; Joshua Marks, MD, Jefferson Medical College; Jennie Baek, MD, Dartmouth Medical School; Chandan Kundavaram, MD, University of Arizona College of Medicine; Vanessa Talbott, MD, George Washington University School of Medicine.



We are also pleased to welcome back the following Jefferson graduates as preliminary interns: James Eiszner, MD and Roman Politi, MD in General Surgery, Rohan Chitale, MD in Neurosurgery and Daniel Sackett, MD in Urology.