

6-1965

## Nurses' Alumnae Association Bulletin, June 1965

Mary Ann Stauffer

Mabel C. Prevost

John R. Busick

Rachel Clark

Florence Roche

*See next page for additional authors*

Follow this and additional works at: [https://jdc.jefferson.edu/nursing\\_alumni\\_bulletin](https://jdc.jefferson.edu/nursing_alumni_bulletin)



Part of the [Nursing Commons](#)

[Let us know how access to this document benefits you](#)

---

### Recommended Citation

Stauffer, Mary Ann; Prevost, Mabel C.; Busick, John R.; Clark, Rachel; Roche, Florence; Sierant, Constance; Werstler, Sara L.; Baxter, Louise; Plasterer, Jeanette; Piersol, Betty; Frazier, Evelyn Wilson; Sierant, Constance; McCracken, Julia Tyler; Elwell, Colleen; Cossman, Margaret M.; Smeck, Emma Maus; Hampton, Elaine Gover; Robson, Theresa; Spruance, Henrietta F.; and Summers, Margaret, "Nurses' Alumnae Association Bulletin, June 1965" (1965). *Nursing Alumni Bulletins*. Paper 29.  
[https://jdc.jefferson.edu/nursing\\_alumni\\_bulletin/29](https://jdc.jefferson.edu/nursing_alumni_bulletin/29)

This Article is brought to you for free and open access by the Jefferson Digital Commons. The Jefferson Digital Commons is a service of Thomas Jefferson University's [Center for Teaching and Learning \(CTL\)](#). The Commons is a showcase for Jefferson books and journals, peer-reviewed scholarly publications, unique historical collections from the University archives, and teaching tools. The Jefferson Digital Commons allows researchers and interested readers anywhere in the world to learn about and keep up to date with Jefferson scholarship. This article has been accepted for inclusion in Nursing Alumni Bulletins by an authorized administrator of the Jefferson Digital Commons. For more information, please contact: [JeffersonDigitalCommons@jefferson.edu](mailto:JeffersonDigitalCommons@jefferson.edu).

---

## Authors

Mary Ann Stauffer, Mabel C. Prevost, John R. Busick, Rachel Clark, Florence Roche, Constance Sierant, Sara L. Werstler, Louise Baxter, Jeanette Plasterer, Betty Piersol, Evelyn Wilson Frazier, Constance Sierant, Julia Tyler McCracken, Colleen Elwell, Margaret M. Cossman, Emma Maus Smeck, Elaine Gover Hampton, Theresa Robson, Henrietta F. Spruance, and Margaret Summers

NURSES' ALUMNAE ASSOCIATION  
BULLETIN

1891



1965

School of Nursing  
*of the*  
Jefferson Medical College Hospital

JUNE 1965

**Alumnae Day**  
**First Saturday in May**  
**Every Year**

**IN THIS ISSUE**

	<i>Page</i>
President's Page .....	1
Officers and Committee Chairmen .....	2
Financial Report .....	2
Hospital and School of Nursing Report .....	3
Student Activities Annual Report .....	5
Jefferson Expansion Program .....	7
Psychiatric Unit .....	9
Progress of the Alumnae Association .....	10
Nightingale Pledge .....	11
Resumé of Alumnae Meetings .....	11
Nursing Service Staff Association .....	14
Scholarship .....	15
Program .....	15
Sick and Welfare .....	16
Social Committee Report .....	16
Bulletin .....	17
Membership — WHY JOIN? .....	17
Private Duty Report .....	18
Annual Giving Report — 1964 .....	19
"PIT" .....	Center
Alumnae Day Notes .....	21
Building Fund Report — 1965 .....	22
Vital Statistics .....	24
IN MEMORIAM .....	26
Class News .....	27
Affiliated Institutions .....	37
Notices .....	38

**NURSES' ALUMNAE ASSOCIATION BULLETIN**

**JUNE 1965**



Mary Ann Stauffer, President  
 Alumnae Association of the School of Nursing  
 of the  
 Jefferson Medical College Hospital of Philadelphia

**PAST—PRESENT—FUTURE**

Two years ago our Alumnae Association promised \$25,000.00 to the Jefferson Building Fund by August 1968. We set a goal of \$5000.00 a year. Last year's drive was a successful one — we went over our goal. This year we have fallen short.

We should keep in mind the importance of this expansion program. It will offer many needed facilities and improvements which will be used by student nurses, hospital staff, medical students, and, of course, our Alumnae Association. We sincerely hope to combine our efforts during the next three years by uniting together as an association determined to meet our total goal in 1968.

My many thanks to all the Officers, Committee Chairmen, Committee members, Board of Directors, and Alumnae Members who have helped me these past two years while serving as your President.

Sincerely yours,

Mary Ann Stauffer, Class of 1954



JEFFERSON NURSES' ALUMNAE  
ASSOCIATION BULLETIN

Published Annually

OFFICERS

President  
MARY ANN STAUFFER, '54

First Vice-President  
ELSIE SKVIR, '49

Second Vice-President  
E. NANCY SCOTT, '55

Recording Secretary  
FLORENCE ROCHE, '56

Secretary-Treasurer  
ALMA S. MILLER, '35

Board of Directors  
EVELYN R. CURRAN, '35  
VIVIAN I. MOYER, '43  
EVELYN DUTE, '36  
FLORENCE KAUFFMAN, '23  
CATHLEEN KEATING, '53  
PERMA DAVIS, '41  
(ex officio)

COMMITTEE CHAIRMEN

Social  
BETTY PIERSOL, '34

Program  
LOUISE BAXTER, '62

Membership  
CONSTANCE SIERANT, '57

Scholarship  
SARA L. WERTSLER, '40

Ways and Means  
MARGARET M. COSSMAN, '47

Nominating  
JANE COX GAY, '64

Sick and Welfare  
JEANETTE PLASTERER, '51

Bulletin  
JULIA T. McCRACKEN, '34

President — Private Duty  
COLLEEN ELWELL, '57

Special — Building Fund  
HENRIETTA F. SPRUANCE, '21

FINANCIAL REPORT  
DECEMBER 31, 1964

RECEIPTS:

Dues and Reinstatements .....	\$ 4,457.50
Sale of Cook Books .....	108.00
Sale of Blue Books .....	2.00
Sale of Bulletins .....	102.00
Annual Giving Contributions ...	2,116.00
Annual Luncheon reservations ..	1,417.50
Interest on savings account ....	413.75
Sundry .....	750.55
Contributions to Specific Funds	3,263.50
<b>Total Receipts</b>	<b>\$12,600.80</b>

DISBURSEMENTS:

Sick benefits .....	\$ 992.11
Graduation Class Breakfast and Prizes .....	375.13
Annual Luncheons and Expenses	1,369.79
Convention Expenses .....	709.82
Scholarship Award .....	500.00
Contributions: United Fund, T.B. Association and Cancer Research .....	85.00
Buffet Catering and Special Meeting Expenses .....	251.38
Printing and Mailing: Annual Giving .....	272.19
Bulletins .....	850.55
Cook Book Notices .....	45.75
Hospitalization Group .....	34.65
Building Fund .....	171.74
General Operating Expenses ...	1,258.07
Transferred to Jefferson Hospital School of Nursing .....	484.77
<b>Total Disbursements</b>	<b>\$ 7,400.95</b>

Excess of receipts over disbursements .....	\$ 5,199.85
CASH BALANCE, January 1, 1964 ..	15,403.19

CASH BALANCE, January 1, 1965

General Fund .....	\$ 5,455.46
Relief Fund .....	4,318.67
Scholarship Fund .....	2,745.18
Thomas A. Shallow Memorial Fund .....	1,884.83
Adele Lewis Memorial Fund ...	262.16
Building Fund .....	5,936.74
	<b>\$20,603.04</b>

HOSPITAL AND SCHOOL OF NURSING

Every time I sit down to prepare a report to you, the year in retrospect seems short because of the many activities which have taken place in only twelve months. This year is no different from those of the past. While it is not possible to relate in detail everything which has happened at Jefferson since we last met, I would like to bring you up-to-date on a few of the most important events.

Because of your active support of Jefferson's Development Program, you will be interested to know that the buildings from Tenth to Eleventh Streets on Locust, have been razed and that excavation for the New Basic Science and Commons Building is in process. If you walk down Eleventh Street toward the old Nurses' Residence, you will see a high wooden fence surrounding the area.

Plans for the New Emergency Room have been completed and it is expected that demolition and new construction will begin late this summer. This important department will be located on the First Floor of the Thompson Building. The "Pit" or Amphitheatre on this floor is three stories high. A floor will be installed at the first and at the second floor levels. On the second floor, the Administrative Offices for Nursing Service and the School of Nursing will be relocated, as well as the Volunteer Service Office. A conference-meeting room seating two hundred will occupy the Ground Floor level.

The new Emergency Room will be one of the best in the country, providing examining and treatment rooms for each service, facilities for radiological studies, and bedrooms for patients who must be detained for short periods.

High on the list of priority construction is the renovation and remodeling of the Sixth and Fourth Floors of the Main Building. Present plans provide for the beginning of this work by spring of 1966. The Second and Third Floors of this building have already been completed and remodeled.

We hope that construction of the new fifteen bed Private Pediatric Unit to be located on the Eighth Floor of the Main Building will be underway before too much longer. This unit, while small, will provide an intensive care and an isolation section, and will meet a real need for a special facility for the care of our private and semi-private patients.

One of the most important buildings, we believe, will be erected on the corner of Tenth and Walnut Streets opposite the Curtis Clinic Building on the site of the bank building. This will be an apartment building for graduate nurses, residents, interns, and medical students. It will be named the Orlowitz Building in recognition of a generous contribution from one of Jefferson's former patients, which makes this building possible. The plans for this building are unique, as the majority of the apartments will be on two levels — living room, kitchen, and in the large apartments, a dining room will be on one floor, and the bedrooms will be either up or down a short flight of stairs. Rents will be reasonable, and the building will be completely air conditioned.

We are pleased to report that the number of our staff nurses has been increased over the past year, and that now we have more positions filled than we had authorized at this time last year. In February of 1964, upon the recommendation of the Administration, the Board of Trustees authorized an increase of forty nurse positions. In addition, the Board approved an across-the-board increase of \$25.00 per month for all nurses, the payment of a bonus of \$300.00 for each new



graduate of the School at the completion of twelve months of continuous service, a substantial additional increase in salary for Supervisors and Head Nurses at the successful completion of a planned supervisory-training program, the establishment of an assistant head nurse position with those appointed also to have a special program of instruction, and finally, the establishment of our own School of Practical Nursing.

At a series of breakfasts, cocktail parties, and dinners at the Benjamin Franklin Hotel, Mr. Maurice P. Coffee, Jr., Hospital Director, announced these plans to all of the nurses. The social events were a real success, and, we believe, marked the beginning of a new era for Nursing at Jefferson.

The breakfast and two cocktail parties and dinners were held again this year just after Easter. It appears that since they have been so well received by all the staff, they will become an annual event.

In spite of the increase in the number of nurses, we have had difficulty in filling all of the newly authorized positions, particularly on evening and night duty. We hope the increase in the differential salaries for evening and night duty to be effective next month will encourage more nurses to accept these positions. We hope that if any of you can give some time to employment on nursing service, the operating rooms, or if you qualify as instructors in the School of Nursing, you will get in touch with us. Refresher courses will be planned for any of our graduates as necessary.

The School of Practical Nursing, opened in November of 1964, is proving very successful. Twenty-two students were admitted in the first class, and we hope to admit the second of twenty-five students on June 21st. The School of Practical Nursing is located on the Third Floor of the Junto Building which is at the corner of 12th and Walnut Streets. For those of you who may be visiting the Hospital, these students wear a one-piece blue uniform with white collars and cuffs. Visitors to the School are most welcome.

The School of Nursing enrolled one hundred and thirty-two students in 1964 and we plan for a class of one hundred and thirty in 1965. These are the largest classes in recent years. The students have been busy, both in their social as well as in their educational activities. To date, thirty-nine of the seventy-five who will graduate in September have indicated their intention of remaining as staff nurses at Jefferson. Most of these, as well as those who joined the staff in 1964, have reported that the bonus paid at the end of one year's employment was an influential factor in their decision.

I think you will agree that Nursing at Jefferson has moved forward a great deal over the past ten years. We hope and we believe that its recognition and progress will continue in the future. On behalf of the Hospital Administration, we wish to thank all of you for your interest and support which means so much to any institution.

May the coming year bring each of you happiness and success.

*Mabel C. Prevost, Assistant Director*

May 1, 1965

## STUDENT ACTIVITIES ANNUAL REPORT 1965

The formal year began with a hearty welcome to the incoming Freshman Class and a Big-Sister, Little-Sister party sponsored jointly by the Classes of 1965 and 1966. Amid entertainment and refreshments, students got an informal introduction to student activity.

Miss Barbara Ott, as S.N.A.P. Chairman, was accompanied to the State Convention at the Benjamin Franklin Hotel, by Misses Judy Snyder and Schlegel on October 27th through 29th.

A Halloween party was planned through the joint effort of fall three classes. Prizes were given for the best costumes and liberal refreshments provided for an enjoyable celebration.

The Basketball season began officially on November 5th with opponent University of Penna. The team ended the year with a six wins, one tie record. A banquet was held at Tarello's Restaurant on April 7th to thank Coach Ann Rutledge, Advisors Miss Hands and Miss McClean and Cheerleaders.

On November 21st Miss Kessler and Miss Valentine attended a conference of Medical careers sponsored by the Southeastern Pennsylvania Careers in Nursing Committee at Abington High School. In addition to exhibiting the Jefferson student uniform they answered questions for interested Junior and Senior High School students.

In the spirit of the Christmas season students collected money to support three separate projects: (1) As in the previous year, a party was given for the children at Sager Recreation Center. 130 gifts were purchased and wrapped and a tree donated to complete the regular party at the center. (2) A \$20.00 gift was given to a needy nurse in the area, and (3) A monetary remembrance was given to the four postmen who serve the residence so thoughtfully. The Faculty sponsored a party for students which was highlighted by the entrance of Santa himself. The Freshmen chorus participated in the Tree Lighting ceremony and caroling throughout the hospital. The chorus also performed at the Arch Street Methodist church. A project was initiated to collect used clothing for distribution to needy families or organizations. This idea has proven successful and is being carried on continuously.

The fourth annual Miss Jefferson Contest was sponsored by the Newspaper Club on March 23rd. On the basis of nursing ability, talent, and personality, Miss Margaret Schofield was selected from thirteen contestants to bear the title of Miss Jefferson 1965.

Miss Ruth Kessler represented Jefferson in the S.N.A.P. Area #1 Outstanding Student Nurse competition. A group of Freshman minstrels represented Jefferson at the Area #1 Talent Contest held at Einstein Medical Center on April 13th.

Five months of preparation culminated in the Annual Show "A Musical Mistake", written and produced by students. Miss Dianne Keegan and Miss Judith Snyder directed a fine show which combines talent and student cooperation in a mass effort. The show was held April 29th and 30th; proceeds are divided between the three participating classes and Student Council.



Through the generosity of the Hospital Miss Anita Schlegel was able to attend the National Convention for Student Nurses in San Francisco on April 29th through May 3rd.

During the year the Social Committee was instrumental in formulating groups for art, gymnastics, bowling and the purchase of reduced rates on skating at Penn Center. Its biggest function is the planning of the annual Dinner Dance held this year at the Benjamin Franklin Hotel on June 5th.

In order to publish a Yearbook the Senior class sponsored the sale of Jefferson charms and dolls, collegient supplies, Christmas cards and wrapping, periodic Paperback Book sales and hotdogs. Their biggest production was a Spaghetti Dinner at which 400 people were served. The Junior class sold candy, cake, and milk weekly. The Freshman class held several successful bake sales which begins their treasury. Student Council initiated the sale of chances to stabilize the treasury.

Students remain indebted to the Hospital, to the Women's Board and the Alumnae Association for their support of our functions and their gifts of basketballs, tumbling mats, stereo recordings, flowers, holiday teas and candy.

Several students participated actively in the Women's Board "Old Market Day Fair" on May 1st.

A Student-Faculty picnic similar to last year has been anticipated.

Student Council officers for the year 1964-1965 are:

President	Tracy Valentine
Vice-President	Ruth Kessler
Secretary	Marilyn Paynter
Treasurer	Jane Murphy
House President	Margaret Fischer
Social Chairman	Betty Slamon
S.N.A.P. Representative	Barbara Ott

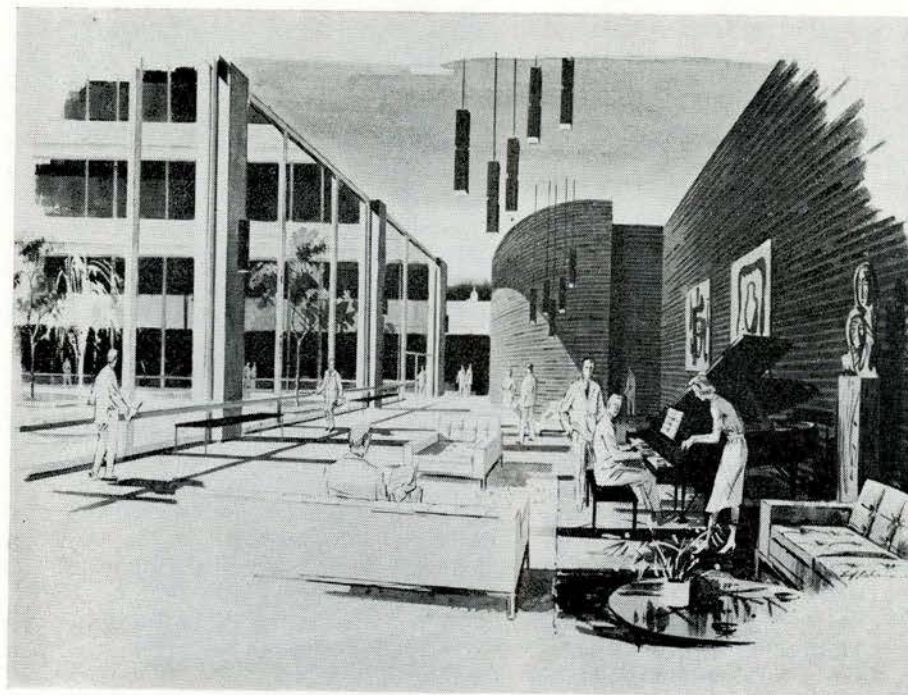
#### DONATE TRADING STAMPS

**S & H - TV** (are preferred)

SEND ANY NUMBER — TO:

Jefferson Nurses Alumnae Association  
11th & Walnut Streets  
Philadelphia, Pa. 19107

Attention: Peggy Summers



The proposed Lobby and Lounge of the student commons area of Jefferson Hall, as visualized by Vincent G. Kling, F.A.I.A., architect. Construction began January 1965.

#### JEFFERSON EXPANSION PROGRAM

An alumna coming back to Jefferson during the next few years will scarcely be able to recognize her old territory. All sorts of new buildings are planned for the area around the College and the Hospital — buildings which will show bold advances in design and in purpose — buildings which will be constructed largely through the generosity of Jefferson's friends and former students.

One of the most exciting new structures is Jefferson's forthcoming Orlowitz Residence Hall, to be built at the southwest corner of 10th and Walnut Streets, the site of the Old Keystone Building. Revised and expanded plans for Orlowitz Hall call for a 22-story structure with a penthouse, lobby and play terraces, and will include one-, two-, and three-bedroom apartments. Staff nurses, members of the house staff and medical students will live there, with all of the comforts of home.

The modern building is the result of a heartwarming story we reported to you last year. Many of you may remember, or have heard of, Dr. Francis Torrens Stewart. In 1913 he performed an emergency appendectomy on a poor, 20-year-old boy, Louis B. Orlowitz. The operation was considered routine, but Mr. Orlowitz never forgot the nursing care he received at Jefferson or Dr. Stewart. He formed a lasting attachment to the institution, and last year contributed \$500,000 towards a residence hall.



Another building of interest to you, I'm sure, is the Stein Radiation Research Center, now under construction. The Center is scheduled to open this summer at 202 S. Hutchinson Street. The \$600,000 building is made possible largely through funds provided by the Eleanor Roosevelt Cancer Foundation, the National Institutes of Health, and generous gifts from Mr. and Mrs. Louis Stein and several of their close friends. It will be the first science building opened in Jefferson's new area for expansion and it represents another important step in our \$41,000,000 development program.

The Stein Center will provide space for both research facility expansion and graduate and post-graduate classrooms and laboratories. It will greatly aid the Department of Radiology in broadening their interest in many different aspects of the cancer problem.

Of importance to you as alumnae is news of Jefferson Hall, the Basic Science-Student Commons Building now being constructed on campus. It is going up on the south side of Locust Street, between 10th and 11th Streets — a brand new area in Jefferson's development.

To be built at a cost of approximately \$16 million by the General State Authority of the Commonwealth of Pennsylvania, Jefferson Hall will be ready for the class entering in 1967. The new building will allow us to increase the size of our classes by 10%, and will provide the space and equipment to meet the requirements imposed by these larger classes. I'm sure you're well aware of the fact that we and other Medical Schools will have to produce 50% more doctors each year by 1975, to maintain today's doctor-patient ratio.

The Basic Science area will include all pre-clinical courses in one large building, permitting the clinical departments, especially research, to use the vacated College Building for expansion. Planning for the new building incorporates the flexibility needed in anticipation of still further improvements in educational programs and teaching methods.

The Commons will be a social and cultural center — a hall for guest lectures, symposia, receptions, concerts and other extra-curricular phases of medicine. Athletic facilities for physical fitness programs are still another feature of the Commons.

I know how important the College Library was to you while you were students. Going up soon on the south side of Walnut Street, between the forthcoming Orlovitz Residence Hall and the present James R. Martin Student Nurses' Residence, will be the new library, modern in every detail. You may remember the location — the site of the old Stephano building, once a tobacco factory.

Facilities are planned to provide for more than 750 medical students, more than 800 members of the faculty, 300 nursing students, 165 residents, interns and fellows, 50 graduate students, and 26 laboratory and X-ray technician students.

These are only a few of the many lively projects now underway here in Jefferson's \$41 million expansion program. Approximately \$26 million of this goal is in hand, including more than \$6.3 million in private subscriptions which came in through the Jefferson Building Fund Campaign.

When you contemplate the up-to-the-minute programs for expansion, it is often difficult to remember that one hundred and forty years have passed into

Jefferson's history. And yet now, more than ever, we can understand the point of view of Jefferson's founder, Dr. George McClellan.

Dr. McClellan was a pioneer and a medical crusader. Insisting that medical students observe operations and symptoms — study people as well as textbooks — he set standards and ideals which are now, more than ever, able to come to fruition.

For the complete Jefferson redevelopment will keep uppermost the fundamentals of our pioneers. The concentration of student and staff housing and recreational facilities near educational, research and clinical areas will result in frequent and convenient access to the entire Medical Center.

The close feeling here goes beyond mere physical proximity. The spirit of working together to achieve our common goals has been a tenet of Jefferson tradition since 1825. From students to physicians to administrative staff, the bright new physical plant will serve to underline the team effort of community service which has always marked our Medical College and Medical Center. As students or staff nurses your part in this team approach has always been one of our greatest assets.

I've tried to bring you up to date on some of the exciting things that have been happening here at Jefferson. Of course, I've only just touched on the subject — there are new plans, new projects, new development every day. I could go on and on. But the most satisfying answer is for you to make a visit to the scene of your hospital training. I think you're in for a terrific surprise!

*John R. Busick, Director of Development*

---

## PSYCHIATRIC UNIT OF THE JEFFERSON MEDICAL COLLEGE HOSPITAL

The Psychiatric Unit of the Jefferson Medical College Hospital was established in November, 1957. It has been in continuous operation since that time and admits approximately three hundred and fifty patients a year.

The Psychiatric Unit was the result of long-term planning, and it occupies the fourteenth floor of the Thompson Annex. The Unit consists of twelve rooms and four lavatories. Of these rooms, one is used for Occupational Therapy, one as a combination living room and dining room, and two as offices. One room, with two beds and near the nurses' station, is used as a combination emergency room, treatment room, and office.

The twenty active beds are divided as follows: three single rooms, two four-bed rooms, one three-bed room, and three two-bed rooms.

The rooms on the fourteenth floor of the Annex are furnished with the usual hospital furniture except that all wheels have been removed from the beds. Patients are not usually bed patients, and having the beds lower is more comfortable. Chamberlain screens on the windows for protection is the only change from the general floors.



Members of the Departments of Psychiatry and Neuro-Psychiatry have the privilege of admitting and treating patients, but all of the staff of the Medical Center refer patients to the Unit. Private, semi-private, and ward patients are all admitted to the same area. Few ward patients are admitted. The majority of the patients are semi-private, and the coverage length of stay is three weeks. Blue Cross allows twenty days of coverage for the care of psychiatric illness.

The purpose of the Psychiatric Unit in the General Hospital is to provide intensive short-term treatment for the emotionally ill. Men, women, and adolescents are admitted to the Unit. All types of cases, except the severely disturbed, are admitted. A large percentage of the patients admitted to the Unit are depressions, reactive or involuntal. Other psychotic and neurotic disorders, character disorders, alcoholics and drug addicts are admitted.

The Staff of the Unit is composed of a Director, Nursing Supervisor, five staff nurses, four nurses aides, four attendants, and an occupational therapist, and a secretary-receptionist. Psychiatric Experience helps a great deal when coming to work on an intensive treatment unit, but the interest in working with patients, and a feeling for people, has helped in training personnel for the Unit.

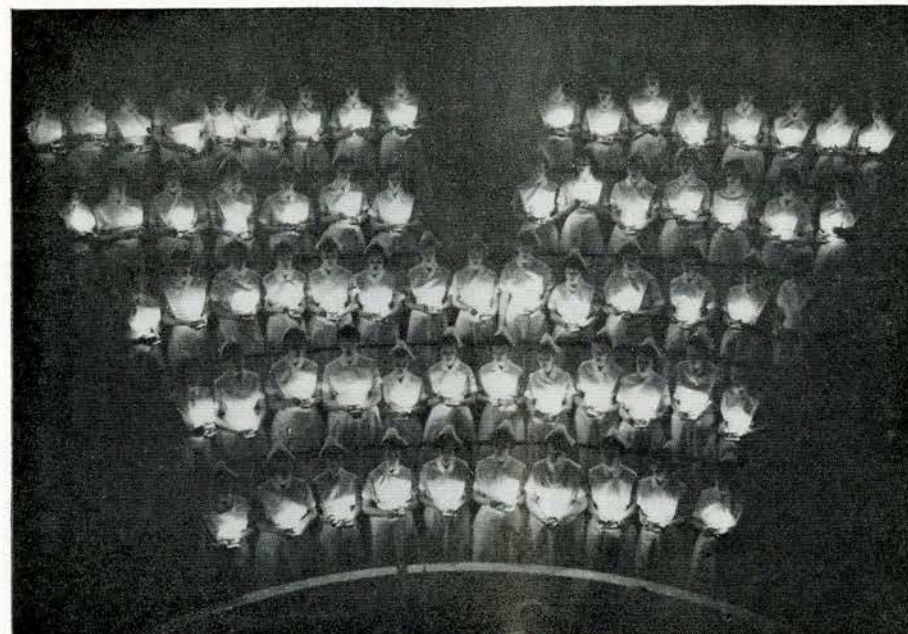
The rapid turnover of patients, the variety of cases, and seeing that emotionally ill patients can get well and return to full normal lives makes working on fourteenth annex an interesting experience.

*Rachel Clark, R.N., Nursing Supervisor*

---

### PROGRESS OF THE ALUMNAE ASSOCIATION

- 1891—Founding of the School of Nursing (with a two year training course), organized by Chief Nurse, Miss Ella Benson.
- 1895—Jefferson Nurses' Alumnae Association was organized by Susan C. Hearle, a graduate of the Training School of The Philadelphia General Hospital. Miss Hearle was an English woman and had received her first training under Florence Nightingale.
- 1912—Jefferson Nurses' Alumnae Association Relief Fund was established.
- 1932—The first Jefferson Nurses' Alumnae prize was awarded. This prize is awarded to the member of the graduating class who attains the highest average during the three year course.
- 1933—First Alumnae Day.
- 1935—First Alumnae Bulletin printed.
- 1936—The Nurses' Alumnae Scholarship Loan Fund was established.
- 1942—The Clara Melville Scholarship Fund was made available to a graduate of the Jefferson Hospital School of Nursing.
- 1956—The first Thomas A. Shallow Memorial prize (donated by the Nurses' Alumnae Association) was awarded. This prize is awarded to the member of the graduating class who has demonstrated the greatest proficiency in Operating Room Technique.



### THE NIGHTINGALE PLEDGE

I solemnly pledge myself before God and in the presence of this assembly to pass my life in purity and to practice my profession faithfully. I will abstain from whatever is deleterious and mischievous, and will not take or knowingly administer any harmful drug. I will do all in my power to maintain and elevate the standards of my profession, and will hold in confidence all personal matters committed to my keeping, and all family affairs coming to my knowledge in the practice of my profession. With loyalty will I endeavor to aid the physician in his work, and to devote myself to the welfare of those committed to my care.

---

### RESUME OF ALUMNAE MEETINGS

SEPTEMBER 8, 1964

26 members present — 5 guests.

It was announced that the graduating class of the School of Nursing was to be guest of the Alumnae Association at a breakfast, Friday, September 11, 1964, at 8:45 a.m. in the Greene Countrie Room at Stouffers, Penn Center Plaza.

No applications were received for the Fall, 1964 Scholarship.



Delegates for the P.N.A. Convention held in Philadelphia, October 26 through October 30, 1964 were:

President	Mary Ann Stauffer
General Duty	Louise Baxter
Nursing Service	E. Nancy Scott
Private Duty	Catherine Prendergast

A recommendation was made and accepted to reserve a hotel room for the use of delegates and others of the alumnae attending the convention.

A recommendation was also made and accepted to give the School of Nursing money to send students to the P.N.A. Convention in October, 1964.

OCTOBER 13, 1964

22 members present.

Applications were presented from the 74 members of the 1964 graduating class of the School of Nursing.

A recommendation was made and accepted that the picture of the President of our association appear on the front page of our Bulletin. The association will pay to have the picture taken.

It was recommended and accepted that the In Memoriam Card be printed.

It was recommended and accepted that each delegate to the P.N.A. Convention be given \$50 for their convention expenses; and that \$50 be given to the School of Nursing to be used for the students attending the S.N.A.P. Convention.

A recommendation was made and accepted that \$75 be contributed to the United Fund.

A recommendation was made and accepted to accept "in toto" the 74 applications for membership from the graduating class.

It was recommended and accepted that the By-Laws committee review the By-Laws for any changes necessary before printing.

Mrs. Rachel Clark, Head Nurse of Jefferson's Psychiatric Department, explained the organization of the unit and newer trends in psychiatric nursing.

NOVEMBER 3, 1964

21 members present.

The ballot for the annual election in January was presented by Miss Florence Roche, chairman of the Nominating Committee.

It was recommended and accepted that the Alumnae Association give the Reader's Digest as a Christmas gift to the following:

Mabel Boller	Mary Mullen
Emma Knock	Bernice Collins
Nellie Hill	Florence Hawke
Emma Frigar	

It was recommended and accepted that the Social Committee proceed with plans for a Christmas Party. Recommendation was also made and accepted that

the committee look into the possibility of a "social hour" following the monthly meetings — coffee, tea, and cakes to be served.

Excellent PNA Convention reports were given by: Miss Prendergast, Mrs. Scott, Miss Baxter, and Miss Stauffer.

A letter was read from Mr. Coffee stating the Governor's Hospital Study Commission has recommended that hospital courtesy discounts for persons other than hospital employees be discontinued. The Board of Trustees of the Jefferson Medical College Hospital has ruled that discounts in rates for hospitalization will be authorized for hospital employees ONLY as of November 3, 1964. Therefore, members of the Alumnae Association, who are not on the Hospital payroll, as well as members of the clergy, will be billed at the rates established for all hospital patients.

JANUARY 5, 1965

51 members present.

The annual election of officers was held. Results were:

First Vice-President	Elsie Skvir
Secretary	Florence Roche
Board of Directors	Evelyn Curran, Vivian Moyer

After lengthy discussion the By-Laws were revised by a unanimous vote of all present.

It was with regret that the President announced the death of an Honorary Member, Miss Elizabeth Melville.

FEBRUARY 2, 1965

24 members present.

An appeal was made to benefit the Building Fund, the sale of candy and fifty-fifty drawings are now being held at the monthly meetings.

Chemo-therapy was the topic of an informative lecture by Dr. Arthur Weiss. This interesting talk aroused much discussion from the group.

MARCH, 1965

No meeting was held. A successful dinner and auction sale were held at the nurses home on March 17. Much fun was had by all.

APRIL 6, 1965

17 members present.

Recommendation was made and accepted that the money made at the dinner and auction sale in March be given to the Building Fund.

Jane Cox Gay has accepted the chairmanship of the Nominating Committee.

The Alumnae Association gratefully acknowledges a \$300.00 donation by Miss Margaret Melville, Honorary Member. (\$125.00—Relief Fund; \$100.00—Scholarship Fund; \$75.00—General Fund).



A lecture and slides were presented to the group by Officer Medella of the Community Division of our City Police Department. Of interest to all were the do's and don't's in self-protection in crimes against women.

MAY 4, 1965

22 members present.

266 members attended the Annual Luncheon. The foodless "bake sale" brought a total of \$216.30. A recommendation was made to place this amount in the Building Fund. It was moved and seconded to do so.

A recommendation was made and accepted that the Alumnae give a breakfast again this year for the graduating class, in September.

A recommendation was made by the Scholarship Committee and accepted by the group that the September 1965 Alumnae Scholarship be granted to Miss Corrine Rae Kurzen, Class of 1962.

A recommendation was made and accepted that the President and the Executive Board be given the power to transact any business which may occur between May and September, 1965.

*Florence Roche, Recording Secretary*

---

### NURSING SERVICE STAFF ASSOCIATION

The past year has been a fairly busy one for the Nursing Service Staff and I feel that progress has been made.

Our Inservice Education Program has been geared toward Safety — safety in the hospital and on the streets. We have had films on hospital safety, and a policeman from the city had a very informative program on self protection for women.

We have sent representatives to the Pennsylvania Nurses' Convention, the Eighth Seminar in Cardiovascular Nursing and the Institute on Nursing's Commitment to Safe Practice.

The Nursing Service Staff presented Mrs. Emma Frigar with a gift upon her retirement from the hospital. We also had a successful Christmas Tea for the Medical Staff, and our Annual Strawberry Festival was a huge success.

Again this year we were the guests of the Board of Trustees and Mr. Maurice P. Coffee, Jr., Hospital Director, for cocktails and dinner or for breakfast at the Benjamin Franklin Hotel the week of April 19. They were much appreciated and enjoyed. We were told of the plans for the further development of the hospital and of increments in salary for those interested in the evening and night shifts and proposed increases for auxiliary personnel on these two shifts. Nurses doing these tours of duty are entitled to every other weekend off duty.

We are still understaffed, but things are improving, and we are looking forward to a better year.

*Constance Sierant, President, N.S.S.A.*

### SCHOLARSHIP

There were two applications for scholarship assistance for September 1965. The names of the applicants were presented at the May meeting of the Jefferson Nurses' Alumnae Association.

It was recommended that Miss Corrine Rae Kurzen be granted scholarship assistance for the fall semester 1965.

A reminder to Jefferson graduates wishing to apply for scholarship assistance!!! The following rules and regulations must be met in order to qualify for a scholarship:

1. The applicants must be members of the Alumnae Association for no less than one year prior to the time of application, a member of the American Nurses' Association, have at least one year of professional experience, and have been admitted to an accredited program in Nursing.
2. Applicants for the scholarships shall request and submit the application to the Chairman of the Scholarship Committee.
3. The closing dates for applications are April 1st for those desiring scholarships for the fall or winter semester and September 1st for those desiring the scholarships for spring semester. The applications will be considered by the Scholarship Committee in April and September, and the recommendations for their award will be presented at the membership meetings in May and October for approval.
4. All other things being equal, preference will be given to the applicant who has been active in the Association and who has most nearly completed requirements for a degree.

*Sara L. Werstler, Chairman, Scholarship Committee*

---

### PROGRAM

The Jefferson Medical College Hospital School of Nursing Alumnae Association presented the following programs at their monthly meetings last year:

OCTOBER 1964

Discussion of Jefferson Medical College Hospital Kidney Unit and its Functions — Mary O'Neill, R.N.

NOVEMBER 1964

Discussion of Kidney Transplant — H. Cohn, M.D.

FEBRUARY 1965

Discussion of Chemo-therapy — A. Weiss, M.D.

APRIL 1965

Slides and Discussion of Crimes Against Women — Officer Maddela.

*Louise Baxter, Chairman*



## SICK AND WELFARE

There were 69 alumnae members admitted to Jefferson Medical College Hospital in the past year ending May 15th, 1965. Of these 22 were Maternity patients and 47 were Medical-Surgical patients.

Cards were sent to all known sick alumnae members both in and out of Jefferson Hospital. The President and Chairman of this Committee attempted to visit as many members hospitalized at Jefferson as possible.

*Jeanette Plasterer, Chairman*

## SOCIAL COMMITTEE REPORT

The social committee has attempted to plan several functions which would be a "get-together" to renew old as well as make new friendships.

The Graduating Class of 1964 were guests of the Alumnae Association to a breakfast on Friday, September 8, 1964, in the Greene Countrie Room, at Stouffers, Penn Center Plaza. The entire class attended and the affair was enjoyed by all.

A Christmas party and Buffet supper was held on Wednesday, December 10, 1964, at the Nurses' Residence. Jolly Santa Claus, portrayed by our "president", Mary Ann Stauffer, appeared on the scene with a gift for each one present.

On March 17, 1965, we had a very enjoyable Buffet supper, followed by an "Auction Sale". The proceeds from the Auction was \$90.00. The Social Committee recommended this money be placed in the Building Fund.

The "highlight of the year" was our Annual Alumnae Luncheon, which was held on May 1, 1965, in the Crystal Ballroom of The Benjamin Franklin Hotel. There were 276 reservations, but due to illness, there was a total of 266 who were able to attend. The following door prizes were obtained through Trading Stamps:

- (1) A crystal bud vase — won by Jennie Kutz, class of 1921.
- (2) An eight-piece Pyrex refrigerator set, won by Ellen Remensnyder Carlton, class of 1940.
- (3) A 1½ quart two section casserole by Corning Ware, won by Joan Harmer Tribolet, class of 1958.
- (4) A 1½ quart Corning Ware casserole, won by Jenny Alderfer Battin, class of 1954.

Following all of our monthly business meetings, we now serve coffee and tea with cookies.

The Committee wishes to thank all the members for their continued support in helping to make these functions a success.

*Betty Piersol, Chairman*

PLEASE!

PLEASE!

PLEASE!

Send your luncheon reservations in a week in advance for your next Annual Alumnae Luncheon for May 7, 1966. Remember to return your card with your check or money order. This is the only way we can reserve a seat for you at your class table.

## BULLETIN

In this the June 1965 issue of the NURSES' ALUMNAE ASSOCIATION BULLETIN we have included news of the Association, articles telling about the Hospital, the School of Nursing and Student activities, a report on the Jefferson Expansion Program and many interesting news items about our Alumnae.

We enjoy receiving articles about "Jeff" graduates and/or their families. In this issue, there are items pertaining to promotions in the Administrative and Educational fields of Nurses and in the Armed Services, and national recognition of three of our graduates as Artists.

We have been informed that several names have been added to the growing list of Life Membership of the Alumnae Association as well as many graduates who have earned the privilege of retirement.

Best wishes and congratulations to all. We wish we could say it personally to each of you.

Bulletin Committee —

*Evelyn Wilson Frazier  
Constance Sierant  
Julia Tyler McCracken*

## MEMBERSHIP

### WHY JOIN ?

The membership of our alumnae association to date:

Life Members .....	21
Active Members .....	671
Associate Members .....	227
Honorary Members .....	4

We have over 2600 names and addresses of Jefferson Nursing School graduates on file. It is to those who do not belong to our alumnae association that we direct this article.

Why Join? First: Our association promotes fellowship among the members and provides mutual assistance and comfort in times of illness, discouragement and misfortune.

Why Join? Second: Our association promotes professional and educational advancement of the graduates of the Jefferson Medical College Hospital School of Nursing.

Why Join? Third: Our association promotes the advancement of the interests of the Jefferson Medical College Hospital School of Nursing.

Why Join? Fourth: Relief Fund Benefits (subject to the rules and regulations as outlined in the 1965 Revised By-Laws).

- (1) Active and Life Members are entitled up to \$175.00 annually toward their Jefferson Hospital bills. This sum of money is to be applied after the members hospitalization insurance has been used.



(2) Associate Members are entitled up to \$75.00 annually toward their Jefferson Hospital bills. This sum of money is to be applied after the members hospitalization insurance has been used.

Why Join? Fifth: Members of the association receive the Annual Alumnae Bulletin free.

Why Join? Sixth: Members of the association may subscribe to the Inter-County Hospitalization through the alumnae association.

What does it cost and what are the requirements?

(1) LIFE Members: A graduate may become a LIFE member if she has belonged to our association for 50 consecutive years. These members are exempt from the payment of dues, but enjoy all privileges of active membership. If you are eligible for LIFE membership — please contact the Secretary-Treasurer of the association.

(2) ACTIVE Members: A graduate may become an ACTIVE member by submitting a properly filled out application form to the Secretary-Treasurer along with \$5.00. This will be voted upon. ACTIVE members enjoy all privileges of membership, also have the right to vote and serve as delegates at conventions and special meetings of the State and National Associations. They may hold office and serve as Chairmen of committees.

(3) ASSOCIATE Members: ASSOCIATE membership covers those graduates who are eligible for membership but are not actively engaged in the profession — yet wish to retain their membership. Associate membership dues are \$2.50 a year. These members may not vote nor hold office. They may serve on various committees. No graduate is required to become an Associate member if she prefers to be an Active member.

*Reinstatement:*

(1) Members who have been dropped for non-payment of dues may be reinstated by paying \$10.00 reinstatement fee, plus the current year's dues.

(2) Members in good standing who have submitted a written resignation may be reinstated with the payment of current dues.

CAN YOU AFFORD NOT TO JOIN?

*Constance Sierant, Chairman*

**PRIVATE DUTY**

The first meeting of the Private Duty Nurses was held in January. Invited to this meeting were Miss Mabel Prevost, Mrs. Evelyn Curran and Miss Ann Flood to discuss the policies of the hospital and procedures which have been changed. It was also decided at this meeting to continue to limit the members of the Jefferson Registry to Jefferson graduates.

The new officers for the following year were also elected at this meeting. They are as follows:

- Chairman — Mrs. Colleen Elwell
- Vice-Chairman — Mrs. Elaine Hampton
- Secretary — Mrs. Katharine Saunders
- Treasurer — Miss Ruth Roberts

The Private Duty Registry at the present time has 36 members. We welcomed 2 new members this year — Miss Sandra Bunker and Mrs. Dolores Gray.

Requirements to join the registry are: (1) You must be a graduate of Jefferson. (2) Be an active member of the Jefferson Nurses' Alumnae Association. (3) Be a member of the American Nurses Association. The fee for joining the registry is \$40.00 per year.

The head of the Jefferson Registry is Miss Ann Flood, who is always happy to welcome new private duty nurses to the registry.

*Colleen Elwell, Chairman*

**REPORT OF ANNUAL GIVING DRIVE  
FOR THE YEAR 1964**

The following is a list of donations, according to classes, for the Annual Giving Drive for the year of 1964. All contributions received after December, 1964, will be listed with those who have made contributions for this year. 1965 contributions will appear in the Bulletin next year.

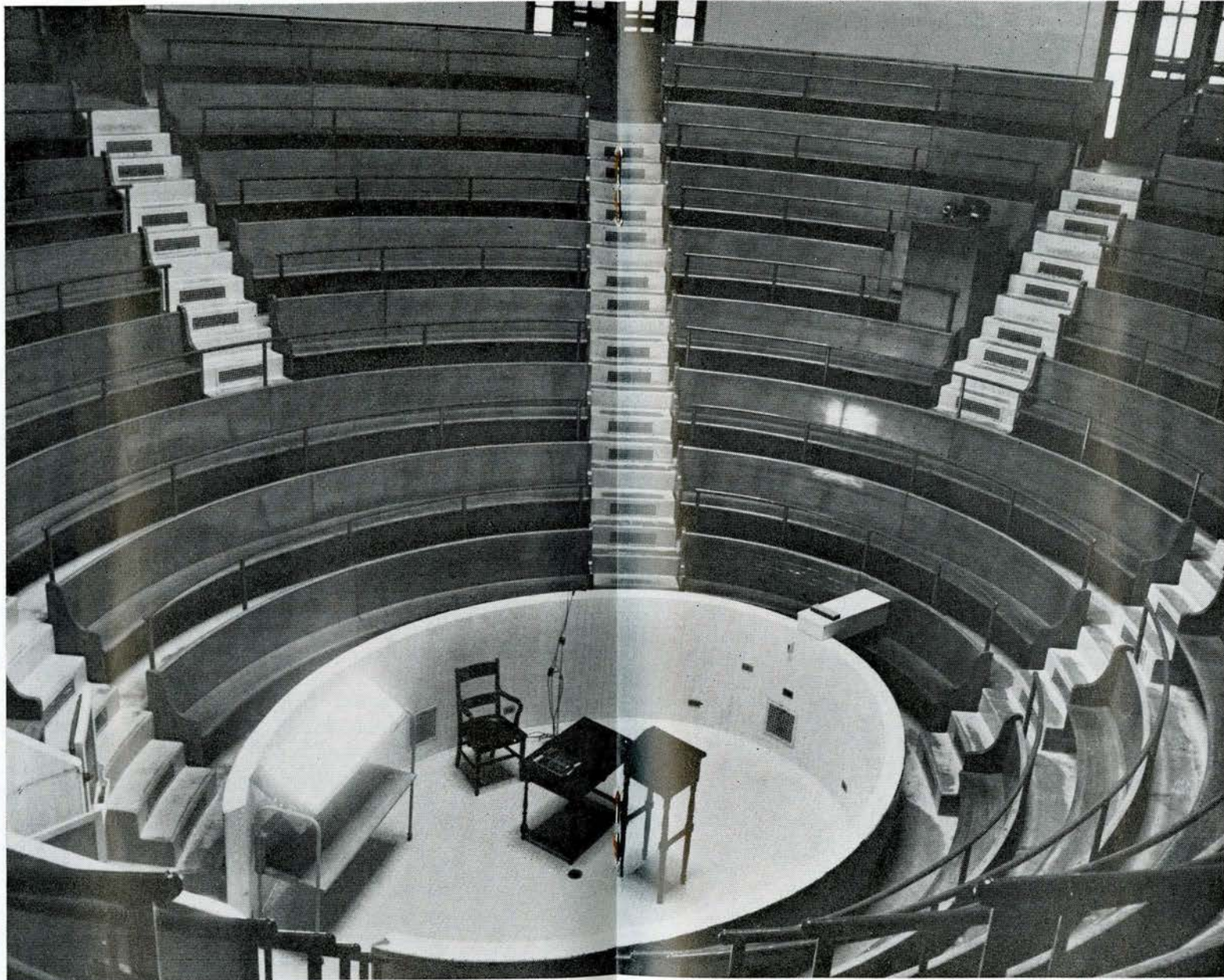
On behalf of the Ways and Means Committee I would like to take this opportunity to thank all of you who made this drive a success. The total amount realized from the sale of cook books (\$108.00) and Annual Giving donations (\$2116.00) was \$2224.00.

Donations were received from the classes of:

1906—\$100.00 Florence E. Carnahan	1920—\$35.00 Pauline Woods Montgomery	Mrs. Harry E. Hartman Mrs. Kenneth E. Fry
1909—\$10.00 Mary M. Hickman	Ann Hall Williams Ada C. Crouse Blanche Neifert	1926—\$30.00 Josephine Miles Dickerson Ernestine M. Rowe Mary Breth Ruth Smith Davis
1910—\$5.00 Mary B. Mullin	1921—\$72.00 Elsie Rappaport Emma Frigar Henrietta Spruance	1927—\$101.00 Filomena Doherty Isabelle Kevel Heverly Martha E. Riland Florence Hawke Lorraine K. Mayers
1912—\$5.00 Nora S. Parsons	Jennetta Wolf Nellie D. Crandall Ruth Purinton Jennie E. Kutz	1928—\$85.00 Doris G. Wise Margaret Martin Lauchle Elvira Jensen Frances P. Woolf Helen Rebert Murray Margery Bargar Katherine Saunders
1913—\$10.00 Anna C. Schwab	1923—\$30.00 Florence Kauffman C. Margaret Donaldson Clara C. Brunner Rena L. White Ruth Roberts	1929—\$115.00 Gladys Higgins Parsons Ann Williams Candler Charlotte Moore Burt Zelda Rowe Mencer Blanche E. Henderson Mabel C. Prevost
1914—\$30.00 Effie B. Herring Mrs. Irene Griffith	1924—\$35.00 Mary Welker O'Connor Mrs. W. K. Lewis Kathryn Tash Estelle S. Taylor Beatrice F. O'Hara	
1915—\$5.00 Elizabeth Heaton	1919—\$10.00 Hattie Williams Book Nora B. Dwyer	
1916—\$15.00 Ethel Faust Myrtle B. Thrasher		
1917—\$5.00 Virginia E. Lee		
1918—\$5.00 Blanche K. String		



MAKE WAY FOR PROGRESS



The "PIT" or Amphitheatre is to be demolished and new construction started in late summer. The Administrative Offices for Nursing Service and the School of Nursing, as well as the Volunteer Service Office will be relocated on the second floor of this new construction.



Lois Van Horn Dawson  
Neta Hart Readinger  
Nora Shoemaker Ehrig

1930—\$45.00  
Ella Engel Kelsh  
Minerva L. Welch  
Vera E. Shontz  
Emma Maus Smeck  
Edith Scott Lane  
Emma R. Sellers Johnson

1931—\$53.00  
Agnes Kevel Henry  
Sue E. Wells  
Isabelle M. Gehl  
Minnie Bartash (W.H.)  
M. Bistline  
Elizabeth Youngblood Gaul  
Dorothy T. Peterson  
Mary E. Kutz

1932—\$25.00  
Mildred C. Getz  
Erma Coup Painter  
Dorothea B. Watson  
Laura S. De Witt

1933—\$56.00  
Caroline Olson Kaetenstein  
Mrs. Ralph E. Fennel  
Catherine Gray Paine  
Kathryn C. Rhule  
Helen D. Kiraly (W.H.)  
Leona Clauser Gehris  
Anna Woodring Crofford

1934—\$103.00  
Verna H. Diehm  
Marie Keene Lawton  
Kathleen W. Armitage  
Mildred Dore Estrada  
Margaret C. Schellenger  
Margaret R. Blake  
Anna M. Dill  
Dorothy K. Raubenhold  
Rhea O. Kassay  
Elizabeth Piersol  
Marion H. Burch  
Julia T. McCracken  
Evelyn Wilson Frazier

1935—\$17.00  
Alma Miller  
Evelyn R. Curran  
Marian B. Howe  
M. Pauline Latsha Thorp

1936—\$17.00  
Evelyn L. Dute  
Mary Hyatt Dominick  
Margaret T. Ransom  
Elinor Farber Brosius

1937—\$35.25  
Margaret C. Taylor  
Kathryn Rorabaugh  
Caroline Masuda  
Harriet Zeller  
Laura Z. Johnson

1938—\$9.00  
Mary K. Reeder Copeland  
Isabelle W. Snedaker  
Lida Pardee Goodell

1939—\$135.00  
Lorraine P. Phillips  
Helen Schragg Daniel  
Olga Dygan Mitchell  
L. Irene Anslaw  
Dorothy P. Lepley  
\$90.00 presented at the luncheon on behalf of the class.

1940—\$40.00  
Bernice G. Sprecher  
Mrs. Pauline W. Mood  
Sara L. Werstler  
Alice Mae Moore

1941—\$41.00  
Reba A. Flack  
Marie Malinowski Di Marco  
Margaret Summers  
Harriet H. Werley, Lt. Col.  
Lucille W. Stradley  
Helen Swan Joslin

1942—\$95.00  
Doris L. Schecter  
Dorothy Fraley Templeton  
Gladys Keiper  
Dorothy Edgar  
Grace Jennings Dunkelberger  
Mrs. Herbert A. Luscombe  
Dorothy A. Cloud  
Doris Bowman  
Rhoda A. M. Weisz

1943—\$53.00  
Vivian I. Moyer  
Mrs. Harry C. Kahn II  
Jeanne C. Zukoski  
Mrs. Harold Warshaw  
Marie H. Breon  
Betty Hanes McKim  
Mary L. Williams

1944—\$5.00  
Janet B. Beyer

1945—\$52.00  
Anna Kuba  
Catherine T. Betz  
Ida Jean Bertram  
Mrs. Donovan C. Jacoby Jr.  
Helen Dick Anderson  
M. Elaine Barrick  
Ruth Riggan Corson  
Barbara R. Bachman

1946—\$45.00  
Betty M. Frommelt  
Betty W. Saunderlein

1947—\$60.00  
Catherine C. Prendergast  
Ruth Miller Downey  
Carol S. Covert

Captain Arlean Miller  
Marjorie Hunsicker Lorah  
Harriet K. Heffner  
Barbara H. Marks  
Elizabeth Prisnock  
Margaret M. Cossman  
Elaine Hampton  
Frances Green Schaub

1948—\$30.00  
Sally E. Boswell  
Anne Olivia Carballo  
Betty T. Daughenbaugh  
Bertha Destan  
Mercedes F. Christ  
Christina M. Blasius  
Patricia Long Haupt

1949—\$133.00  
Elizabeth S. Fischer  
Patricia Jane Johnson  
Louise Strayer  
Lorraine Milewski McCall  
Theresa B. Poli  
Mary J. Glasgow  
Charmaine Kissinger  
Jean E. Mease, Capt. USAF  
Bette Jean Borkey  
Helen E. Barrett  
Barbara M. Breen  
\$30.00 presented by Jean Beard-Davidson on behalf of the class.

1950—\$31.00  
Janet C. Hindson  
Mrs. Thomas Clauss  
Mary Louise O. Foy  
Jean Opel Serena  
Lois Kleintob Jernstrom

1951—\$32.00  
Jane E. Hawk Aires  
Lorraine A. Jeitner  
Jeanette Plasterer  
Colleen R. Winship

1952—\$13.00  
Margaret Faust Keates  
Nancy Lee Greising Wilhelm  
Doris Mae Thorn Suter

1953—\$21.50  
Jane R. Lemmon  
Mrs. Carroll Richards  
Janet Edwardsen Meredith  
Thelma Heist Goodhart  
Cathleen Keating

1954—\$66.00  
Sarah Hindson Wagner  
Helen Marie Besecker  
Louisa E. Hock  
Margaret I. Riemer  
Jean Langye Crummer  
Doris Innes  
Carole Glass Hammon  
Mrs. Bernard S. Yurick

Mrs. James L. Stone  
Mary Ann Stauffer  
Joan S. Broshius

1955—\$49.00  
Patricia C. Magley  
Barbara G. Smith  
Jane De Angelis  
Joan Chadwick Cramer  
Esther Nancy Scott  
Dawn Deitman John  
Sydney M. Cassell

1956—\$25.00  
Marilyn R. Glauber  
Beverly Rupp  
Betty L. Miller  
Florence Roche  
Mary L. Groves  
Catherine Tisch

1957—\$28.00  
Grace A. Smith Clancy  
Shirley A. Imler  
Peggy Lou Eckhart  
Rose Marie Tomasello

Betty H. Graham  
Colleen Elwell

1958—\$44.25  
Edna Hnelski  
Barbara Barrett Borkowski  
Shirley R. Hill  
Susanna Sagi  
Muriel Joan Keller  
Rosemary Glanfield  
Joan C. Tribolet  
Jean Metz  
Yvonne Foster  
Linda Eppley

1959—\$52.00  
Nancy Davis Crawford  
Dolores Hoover  
Virginia Kozak  
Joanne L. Peterson  
Susan L. Derrickson  
Carol Ann Wenzel  
Nancy R. Butler  
Charlotte Hoerst  
Anne V. Jones  
Vera Stevens Myers

1960—\$35.00  
Judith E. Stauffer  
Rhoda May Little  
Catherine Bulkley  
Sue Ann Cozzolino  
Judith Ann Wood  
Caroline Newman  
Virginia C. Johnson

1961—\$22.00  
Mary Jill Mascena  
Marion Heilner  
Jane A. Sunday  
M. Diane Schafer

1962—\$12.00  
Patricia Ann Thomas  
Barbara Jean Hartwell  
Joan Rosenbaum

1963—\$25.00  
Joann R. Brosius  
Joan P. Leitch  
Dorothy Fanelle  
Theresa Robson  
Shirley Ann Marat

Over 2600 Annual Giving letters were sent out to all parts of the world early in March of this year. I would like to thank all my friends, committee members, and alumnae members who helped make this year's drive an assured success.

*Margaret M. Cossman, Chairman  
Emma Maus Smeck  
Elaine Gover Hampton  
Theresa Robson*

## ALUMNAE DAY NOTES

The 1965 Annual Luncheon was held at the Benjamin Franklin Hotel, Saturday, May 1st. Miss Mary Ann Stauffer, President, presided.

There were 266 in attendance. The states represented were: Connecticut, Delaware, Florida, Georgia, Illinois, Maryland, New Jersey, New York, Ohio, Pennsylvania, Tennessee, Texas, Virginia.

An orchid was presented to the oldest member present — Miss Effie Herring, Class of 1914. There were two members of the 50th Anniversary Class present — Miss Elizabeth Heaton and Mrs. Ethel Smith Genzmer. The flowers from the head table were presented to Miss Ruth Puriton, Class of 1921, who was hospitalized at Jefferson.

The officers and committee chairmen of the association were introduced. Miss Mabel Prevost, Assistant Director of the Hospital, and Miss Doris Bowman, Director of the School of Nursing, were unable to be present. They were in San Francisco attending the meeting of the National League of Nursing Council of Member Agencies, Department of Diploma and Associate Degree Programs. Miss Prevost's report to the Alumnae Association was read by the President. A copy of this report is on page 3.



The following Anniversary Classes were recognized as the Year was called:

- 1st — Class of 1964 — 3 members present
- 5th — Class of 1960 — 3 members present
- 10th — Class of 1955 — 12 members present
- 15th — Class of 1950 — 13 members present
- 20th — Class of 1945 — 18 members present
- 25th — Class of 1940 — 21 members present
- 30th — Class of 1935 — 12 members present
- 35th — Class of 1930 — 19 members present
- 40th — Class of 1925 — 3 members present
- 45th — Class of 1920 — 4 members present
- 50th — Class of 1915 — 2 members present

At the conclusion of the luncheon, all members were invited to attend the Old Market Fair at historic Head House and the Old Second Street Market in the Society Hill Section of Philadelphia. The event was sponsored by the Women's Board of Jefferson.

### PLAN TO BE PRESENT NEXT YEAR

### 1964 BUILDING FUND REPORT

The following Classes have contributed \$2,034.00 to the Building Fund since January 1965.

W.H. 1912—\$5.00 Mary C. Faulkner	1920—\$70.00 Ada C. Crouse Edith Cypher Frances Hartman Bernice S. Ziegler Pauline W. Montgomery	Mary Breth Elizabeth Farmer Josephine Dickerson Pauline Still
W.H. 1919—\$1.00 Sophie B. Levey	1921—\$85.00 Emma G. Frigar Jennie E. Kutz Sue Osbough Katherine P. Smock Ruth Purinton Jennetta Wolfe Maude F. Spencer	1927—\$45.00 Lorraine K. Mayers Pauline Gillen Lillian Mertz Ann H. Phillips Filomena Doherty
W.H. 1924—\$5.00 Beatrice O'Hara	1922—\$20.00 Anna G. Ward Hannah Buffington	1928—\$63.00 Marian B. Smith Dorothy Bennett Mary Malick Elizabeth S. Diamond Katherine Heath Katherine F. Saunders Edna Scott
W.H. 1925—\$5.00 Ida G. Smith	1923—\$25.00 Clara Brunner Ruth Roberts Rena White	1929—\$30.00 Zelda R. Mencer Anna W. Candler Grace W. Eichelberger Ruth K. Schuler Nora S. Ehrig
W.H. 1928—\$5.00 Anna P. Miller	1924—\$15.00 Estelle S. Taylor Mildred F. Semler	1930—\$65.00 Virginia Avery Teresa Sweeney Mildred Zook Edith H. Krugler Edith S. Lane
W.H. 1931—\$5.00 Minnie Bartash	1925—\$35.00 Mildred K. Okuniski Edith B. Ogden Marian R. Briggs	
W.H. 1934—\$5.00 Angela Cozza	1926—\$65.00 Mary Bonnenberger	
<b>JEFFERSON</b>		
1911—\$60.00 Elizabeth Jones Edna B. Noyes		
1912—\$15.00 Norma S. Parson		
1915—\$5.00 Elizabeth Heaton		
1916—\$5.00 Mary H. Moore		
1918—\$15.00 Blanche K. String		

Edith Tebbs Thelma Laird Mary Boyd	1940—\$235.00 Esther A. Musselman Sue B. Dale Goldie B. Pringle Dorothy C. Rosenberg Catherine C. Lambert Ellora E. Meyer Mary E. Fleming Margaret F. Reed Helen J. Enterline Mary F. Rosser Edna F. Feloni Violet G. Hyman Janet H. Arnold Martha I. Reed Hope K. Mood Hazel L. Knepper Virginia McC. Avitable Virginia M. Mutschler Alda N. Knodel Doris P. Englebracht Ruth P. Frazer Ellen R. Carlton Averene S. Murphy Sara V. Cattermole Thelma W. Taylor Sara Werstler Bernice W. Sprecher Norma Z. Smith Elizabeth P. Fuhse	1946—\$15.00 Gloria B. Kovack Ruth F. Nemeth Nelma F. Shaffer
1931—\$98.00 Esther Lentz Mary K. Bistline Laura K. Mathews Dorothy Peterson Mildred S. McGee Cathleen S. Boyd Sue Wells Elizabeth Gaul Irene Jones Emma Bahner Edith Frizell	1947—\$60.00 Frances G. Shaub Laura B. Tobia Marian B. Hunter Dorothy M. Sturr Virginia S. Lawrence Elizabeth B. Watkins	1948—\$28.00 Mercedes B. Christ Betty J. McDonald Kathryn H. Eyrich Betty P. Konjusky Lillian B. Van Hoy Rachael I. Herbert
1932—\$10.00 Erma Painter Veronica Welsko	1949—\$38.00 Louise D. Strayer Charmaine Kissinger Ruth L. Wettig Kathleen Tierney Eleanore P. Robinson Shirley S. Bittner Barbara B. Breen Lucille F. Henkelmann	1950—\$85.00 Mary M. Brumbaugh Barbara F. Ackerman Rose G. Mulligan Janet Hindson Jean H. Larkin Jean M. Fujita Helen S. Rightor Anne Werner Wealthy M. Shutt
1933—\$35.00 Louise B. Steinberg Sally B. Baxter Elsie M. Drissel Leona C. Gehris	1941—\$55.00 Reba A. Flack Filomena Hubsch Kathryn D. Quackenbush Perma E. Davis Ruth K. Giletto Ruth Shaner Lucille W. Stradley Geraldine W. Waters	1951—\$25.00 Dorothy D. LaSasso Marion T. Williams Barbara E. Beam
1934—\$55.00 Margaret Shellenberger Mildred B. Estrada Anna J. Gehrke Ruth S. Dunfee Julie McCracken Evelyn Frazier Marie K. Lawton	1942—\$60.00 Dorothy Cloud Virginia H. Heckman Sally Luscombe Myrtle T. Berman Angela D. Clark Georgianna W. Green Irene L. Polner	1952—\$45.00 Margaret F. Keates Jean F. Ryan Nancy G. Messick Eloise Hippensteel Ann S. Stout Alice D. Chase
1935—\$28.00 Mary W. Coles Margaret A. Tannard Marian B. Howe Frances K. Fisher Mary R. Evans Blanche Rushin	1943—\$20.00 Betty C. Suttles Vivian I. Moyer	1954—\$45.00 Sally H. Wagner Louise M. Hoch Betty R. Stone Mary Ann Stauffer Margaret I. Reimer
1936—\$145.00 Evelyn Dute Margaret P. Ransom Elinor F. Brosious Thelma M. Saylor Myra S. Dunkle Lydia Yerkes	1944—\$35.00 Dorcas B. Revelli Vivian F. Gragg Thelma Y. Tojek Mary Lou G. Stewart	1955—\$10.00 Dawn D. John
1937—\$50.00 Etta H. Baker Helen L. Llewellyn June L. Smith Violet S. Orland Laura Z. Johnson Pauline D. Leager	1945—\$50.00 Mary A. Barrick Jennie A. Rule Jane B. Mack Ida F. Bertram Janice K. Jacoby Betty M. Breaw	1956—\$8.00 Shirley O. Doernte Florence Roche
1938—\$15.00 Elsie B. Antal Josephine S. McDowell Isabel W. Snedaker		
1939—\$15.00 Phyllis C. Makurdisk Hattie K. O'Connor Isabel M. Jackson		



1957—\$20.00  
 Eleanor H. Miller  
 Georgann J. Miller  
 Martha M. Werler  
 Grace S. Clancy  
 1958—\$15.00  
 Jean B. Metz  
 Joan H. Tribolet  
 Louise W. Dunn  
 1959—\$15.00  
 Dolores S. Gray

1961—\$25.00  
 Barbara Fullerton  
 Carol W. Levinson  
 Jane Sunday

1963—\$15.00  
 Lucille Scriber  
 Margaret Ann Turner  
 Mary Speicher

1962—\$15.00  
 Barbara Hartwell  
 Margaret Furey  
 Arlene Kania

1964—\$15.00  
 Betty F. Davis  
 Barbara Hedenberg  
 Lynn McM. Montgomery

The Committee wishes to thank all who have contributed, and if we have omitted the name of any contributor we are truly sorry.

*Henrietta F. Spruance, Chairman*  
*Margaret Summers*  
*Betty Piersol*

### MARRIAGES

Dorothy (Edgar) Burns, 1942  
 Jeanne T. (Flanagan) Ryan, 1952  
 Jean Tomlin (Ward) Dempsey, 1954  
 Dorothy (Brown) Klause, 1955  
 Dorothy (Widney) Lucas, 1955  
 Mary Kay (Griffiths) O'Kavage, 1957  
 Arlene (Boyer) Williams, 1959  
 Nancy (Wood) Cohen, 1959  
 Marlene (MacFarland) Olivieri, 1959  
 Phyllis (Parry) Colander, 1960  
 Elizabeth (Conly) Beardon, 1961  
 Carolyn (Doorly) Vizzard, 1961  
 Carol (Aufferman) Ferree, 1962  
 Eleanor (Gates) Tullos, 1962  
 Sandy (Arnold) Hanks, 1962  
 Jessie (Reck) . . . . ., 1962  
 Elizabeth (Keen) Meyer, 1962  
 Sandro Jo (McMinn) Laudadio, 1962  
 Janice (Panick) Billick, 1962  
 Susan Kay (Eckerd) Leake, 1962  
 Marjorie (Haines) Harris, 1963  
 Jean (Allen) McConnell, 1963  
 Judy (Welsko) Lynn, 1963

Maureen (Cassidy) McKeever, 1963  
 Mary (Woerner) Scheebel, 1964  
 Nancy (Shearer) Jones, 1964  
 Fay (Shaffer) Butzback, 1964  
 Judith (Scheib) Pollard, 1964  
 Donna (Rockhill) Ruggieri, 1964  
 Lynn (McMaster) Montgomery, 1964  
 Dorothy (Kemmerer) Weber, 1964  
 Nancy (Gray) Woodruff, 1964  
 Betty (Fesmier) Davis, 1964  
 Janet (Ferster) Losch, 1964  
 Linda (Roth) Seda, 1964  
 Phyllis (DeJesse) Sbrolla, 1964  
 Joy (Stabile) Ambruso, 1964  
 Allisona (Mitzel) . . . . ., 1964  
 Mary Lou (Woerner) Schubel, 1964  
 Stephanie (Records) Seipel, 1964  
 Roanne (Axelson) Heise, 1964  
 Carol (Bailey) Miller, 1964  
 Marsha (Bregman) Seltzer, 1964  
 Eileen (Cancelli) DeSipio, 1964  
 Jane (Cox) Gay, 1964

### BIRTHS

Marie (Cannon) Philler, 1944  
 Baby Girl  
 Evelyn (Sherick) Sell, 1945  
 Baby Girl  
 Irene (Harter) Reams, 1947  
 Baby Boy  
 Mary Jane (Wargo) Church, 1947  
 Baby Boy

Margaret (Logan) Casey, 1949  
 Baby Boy  
 Dorothy (Wachter) Brett, 1950  
 Baby Girl  
 Joan (Christman) Claus, 1950  
 Baby Boy  
 Elinore (Satterfield) Lynch, 1950  
 Baby Boy

Norma (Jones) Murray, 1951  
 Baby Boy  
 Joyce (Graves) Leshner, 1952  
 Baby Boy  
 Betty (Haught) Anderson, 1953  
 Baby Girl  
 Joan (Nichol) Davis, 1954  
 Baby Boy  
 Charlotte (Hoffman) Orvis, 1955  
 Baby Boy  
 Carol (Bjork) Schmidt, 1955  
 Baby Girl  
 Adrienne (Morasco) Rodgers, 1955  
 Baby Boy  
 Virginia (Handy) Putney, 1956  
 Baby Boy  
 Joyce (Wyse) Hagopian, 1956  
 Baby Girl  
 Betty Doanne (Pfleeger) McElroy,  
 1956 — Baby Girl (Adopted)  
 Barbara (Bellus) Shannon, 1957  
 Baby Boy  
 Darlene (Stoudt) Bleile, 1958  
 Baby Boy  
 Barbara (Barret) Borkowski, 1958  
 Baby Girl  
 Linda (Doll) Eppley, 1958  
 Baby Girl  
 Rose (Knaff) Glanfield, 1958  
 Baby Boy  
 Margaret P. (Sankey) Brown, 1959  
 Baby Boy  
 Joanne (Kling) Farrall, 1959  
 Baby Girl  
 Vera (Stevens) Myers, 1959  
 Baby Boy  
 Judith (Wright) Bloes, 1959  
 Baby Girl  
 Arlene (Boyer) Williams, 1959

Betty (Rockafellow) Laird, 1959  
 Baby Girl  
 Jane (Ryan) Deitrich, 1959  
 Baby Girl  
 Rhoda (Smeltzer) Little, 1960  
 Baby Girl  
 Madeline (Henly) Glass, 1960  
 Baby Boy  
 Marilyn (Miller) O'Brien, 1960  
 Baby Boy  
 Beverly (DeTurk) Wentz, 1960  
 Baby Girl  
 Carolyn (Doorly) Vizzard, 1961  
 Baby Boy  
 Mary Jill (Dansch) Mascena, 1961  
 Baby Girl  
 Sharon (Potts) Sahrhage, 1961  
 Baby Girl  
 Christine (Moser) Favino, 1961  
 Baby Girl  
 Stephanie (Arnold) Boegly, 1961  
 Baby Boy  
 Barbara (Berry) Jazcun, 1962  
 Baby Boy  
 Carol (Frame) Green, 1962  
 Baby Boy  
 Margaret (Saksa) Tansy, 1962  
 Baby Girl  
 Marian (Welsko) Ambrose, 1962  
 Baby Girl  
 Eleanor (Gates) Tullos, 1962  
 Baby Girl  
 Sandra (Cimino) Bethanie, 1963  
 Baby Boy  
 Marie (Bretschneider) McCloskey,  
 1963 — Baby Girl  
 Jane (Cox) Gay, 1964  
 Baby Boy

### DEATHS

Maude (Clippinger) Faust, 1904  
 Margaret (Conrad) Weaver, 1913  
 Mary Ansley (James) Short, 1915  
 Lillian (Bowen) Plumb, 1917  
 Eliza (McCullough) Williams, 1919  
 Ruth Purinton, 1921  
 Mary Pierce Welsh, 1922  
 Mae Orr, 1923  
 Lillian (Larson) Hudson, 1924  
 Florence Hawke, 1927

Evelyn (Snodderly) Smith, 1929  
 Pearl (Becker) Ankeny, 1929  
 Kathryn McNevin, 1931 W.H.  
 A. Justyne Schaffer, 1933 W.H.  
 Margaret (Racik) Myers, 1940  
 Mary (Shoup) Dove, 1947  
 Evelyn (Grimm) Smith, 1947  
 Anna L. Morris, Honorary  
 Elizabeth Melville, Honorary





## IN MEMORIAM

The Nurses Alumnae Association of the Jefferson Medical College Hospital wishes to inform you that the sum of Ten dollars has been placed in the Nurses Relief Fund in memory of \_\_\_\_\_  
Class of \_\_\_\_\_.

Respectfully Submitted,

President Jefferson Nurses  
Alumnae Association

## CLASS NEWS

**WHITE HAVEN GRADUATES:** Miss Angela Cozza has retired. The records of all White Haven graduates have been placed in our Alumnae office. Please contact Miss Doris Bowman, Director of the School of Nursing, for information.

**HONORARY MEMBERS:** Miss Anna L. Morris, Supt. of the White Haven Sanatorium Training School, was made an Honorary member of the Jefferson Nurses Alumnae Association when Jefferson took over the White Haven Sanatorium. Miss Morris died in December 1964 at the age of 83 years.

Miss Elizabeth Melville, Honorary member and sister of a former Directress of Nurses at Jefferson, died in November 1964.

**1904**—Anna Blanche Lichty Snavelly Barnard Snavelly, 916 Louise Ave., Lancaster, Pa. (17601)—In case my name puzzles you — after the death of my second husband, after a few years of marriage, my children (five Snavellys) asked me to use their name — I did — and do so now.

**1915**—Elizabeth Heaton, 311 S. 13th St., Phila., Pa. (19107) — Celebrating her 50th Anniversary as a graduate of Jefferson — wishes for more good health so she can continue working.

Mary Ansley James Short, Bethany Beach, Delaware (19930) — departed this life January 20, 1965 at her winter residence in Rehoboth Beach, Del., from a sudden massive coronary. (Sent in by her daughter.)

**1917**—Elsie L. Dunn, 211 - 3rd Ave. N., Pell City, Ala. (35125) — Retired.

**1920**—Anna Campbell Trego, 55 High St., Pottstown, Pa. (19464) — Did School Nursing from 1941 to 1958 when I retired.

**1921**—Verna M. Keller Roberts and daughters, Caroline Roberts King, R.N., and Ruth Roberts James, R.N., were present for the Luncheon, May 1st.

**1925**—Delilah Hendricks Naugle, P.O. Box 86, Connyngham, Pa. (18219) — Death of husband — Reverend R. B. Naugle — January 19th, 1965.

S. Elizabeth Scotton, P.O. Box 36, Hartley, Del. (19953) — I retired June 15, 1964, after being employed by the State of Delaware since June 8, 1938.

**1924**—Mildred H. Felter Semler, 108 - 13th St., N., St. Petersburg, Fla., writes: "Dear friends: Though not an alumnae member I'm always proud to say I'm a Jefferson R.N. I'm still active as a private duty nurse at Mound Park Hospital in St. Petersburg, Fla. We are fortunate in having many fine M.D.s— to mention one, Dr. Leinbach of Reading, Pa. He has perfected a new technique for hip repair. At present he is treating another orthopedic surgeon from Lansdale, Pa., who is next door to my present patient — a Supreme Court Judge from N.Y. State. Dr. Leinbach journeys abroad nearly every year where he both studies and lectures. He has a "down to earth" personality, also a real fascination for all types of interesting people." Mrs. Semler enclosed a check for the Building Fund.

**1926**—Agnes Durovick Tomasula, 240 Center Rd., Poland, Ohio (44514) — Husband, Reverend Michael J. Tomasula, pastor of the John Calvin United Presbyterian Church, Youngstown, Ohio, for 27 years, passed away March 31, 1964.

Pauline McElwee Gillen, 4581 Kings Highway, Brooklyn, N.Y. — Have enjoyed a fairly successful art career. Am a member of several national art associations. Have exhibited in museums and galleries across the U.S.A. and have received a number of



awards; represented in many private collections — the latest being in the permanent collection of the Norfolk Museum of Fine Arts Khouri Collection. Painting name — Polly Gillen.

1928—Mary A. Stauffer Malick (Mrs. Alton W.), R.D. #2, Sunbury, Pa. (17801) — Mary Ann Stauffer, President of our Alumnae Association, is Mrs. Malick's niece.

Margaret Martin Lauchle, 5909 Grand Ave., Downers Grove, Ill. (60515) — My husband is Technical Training Supv. at Miehle Printing Press Co. We have three daughters, two of whom graduated from Wesley Memorial Hospital in Chicago, and a son who teaches school — also have five grandchildren.

1929—Zelda K. Rowe Mencer (Mrs. Howard E.), 910 S. 30th St., Camp Hill, Pa. (17011) — writes that she is inactive.

1930—Dorothy Mae Williams Derk — writes that she has retired temporarily from nursing due to health problem. Her husband 4-8 Precinct Chairman Democratic Committee. She is the proud grandmother of a baby girl.

Emma Ruth Sellers Johnson, 780 Bettelwood Ave., Collingswood, N.J. (08108)— writes that she has been unable to work for the past year due to arthritis in hip and knee joints. "Breaks my heart as it is very hard to give up nursing after all of these years, also to give up our flower nursery and large pre-revolutionary home — just a little too much to care for."

Virginia Miller Bruner, P.O. Box 487, Alamo, Texas (78516) — At present is Assistant Director of Nurses, McAllen Municipal Hospital, McAllen, Texas. She writes — "Sorry I can't come to the luncheon this year as I greatly enjoyed my short visit last year, and would like to repeat it."

1931—Mildred English Hively, 2371 Hillside Ave., Williamsport, Pa. (17705) — I have been elected a member of the Executive Board of Lycoming College Alumni Association and will be the next Regent for the Lycoming Chapter of the Daughters of the American Revolution; am a Director of the Ladies Auxiliary of the Williamsport Shrine Club.

Marie Hosage DeStefano, 740 Wood Ave., Colonia, N.J. (07067) — Widowed in 1959 — now retired — volunteer for Red Cross Blood Donor program.

Elizabeth Youngblood Gaul, 2148 Cherry St., Phila., Pa. (19103) — Son (Jay) married, has a 4 year old son and twin girls — age 9 months. Daughter (Lois) is a Junior at Wilson College. I am a widow and now live in a "Town House" on Cherry Street.

1932—Theresa P. Wakeley, 552 S. 59th St., Phila., Pa. (19143) — Proud grandmother; son, Joseph, Jr., M.S.E.S., Brooklyn Poly. Un., 1964; daughter, Elizabeth, receives her Master's in Classical Archeology, U. of Penn., this year.

1934—Mildred Myers Smith, 31 Stanford Place, Montclair, N.J. (07042) — Nursing Instructor for Montclair Red Cross, Chairman of Nursing Services and member of the Red Cross Board. Just elected to a 3 year term on the Church Council of the First Lutheran Church, Montclair.

1935—Mary Rotz Evans, 2505 Faulk Woods Rd., Wilmington, Del. (19803) — Husband, William J. Evans, died Nov. 16, 1962. I am at present the School Nurse at the Memorial Hospital in Wilmington.

Priscilla Vanderslice Margerum, 200 Canterbury Dr., Ramsey, N.J. — After 23 years in Indiana we have been transferred "back east". Jack is Manager of Manufacturing at General Electric Co. in Paterson, N.J.

Gertrude Jones Saunders, 10160 Page Rd., Streetsboro, Ohio (44241) — Two children: Sandra — married — no children — College graduate — State employee; Dean — still a college student — attended 5 years so far — hopes to become a dentist.

1936—Edna Miriam Spangler McAvoy, 1425 Pine St., Norristown, Pa. (19401) — Our son, Bill, is an honor student at Penn State University — may be a veterinarian.

Lydia K. Yerkes, 2107 Winton, Havertown, Pa. (19083) — Writes that she was promoted — Coordinator of Nursing Services for the School District of The Township of Upper Darby.

1937—Ruth Butler Sowers (Mrs. John W.), R.D. 1, Fayetteville, Pa. (17222) — Am married to a G.P. (Jefferson graduate — Class of '35). Have a boy age 16 and a girl age 15. Both (fortunately) inherit their father's brains. She is an extrovert — he is an introvert — we do have variety. She is quite a bowler — represented this tri-county area in the Junior All Star Tournament (State) — in 1962 — she lost.

Mildred Woodhead Hawkesworth, P.O. Box 272, Peterborough, N.H. (03458) — (1) Son, Denis, freshman at the University of New Hampshire and a member of the Lambda Chi Alpha Fraternity. (2) Myself — Instructor at Crotched Mountain Rehabilitation Center in charge of undergraduate and graduate nurse education. We take affiliations from various schools in N.H., Maine and from UNH and other college programs.

EDITOR'S NOTE: We have learned that Mrs. Hawkesworth's biography has been included in the Dictionary of International Biography published in England. Her biography has also appeared in the first and subsequent editions of "Who's Who of American Women." She is also interested in art and has exhibited oil and water-color paintings at Plymouth Meeting Friends School Library, Norristown Library, Norristown Art League and is a member of the Rockport Art Association, Rockport, Mass.

1938—Edith Owen McCutcheon, 70 Collins Rd., Trenton, N.J. (08619) — No special recognition but I'm most proud that all of my family that I have left — my daughter — is in training in "Little Jefferson", Germantown Hospital, Phila.

Madeline M. Ullom, 262D S. Paseo Madera, Green Valley, Ariz. (85614) — Member International Platform Association — three paintings exhibited Santa Cruz Art Festival.

EDITOR'S NOTE: Miss Ullom is listed in "Who's Who of American Women" and "Selected American Scientists."

1939—Leonore Goude McPherson (Mrs. Sidney), 95 Van Buren Ave., West Hartford, Conn.

#### AFTER 25 YEARS

1940—Esther Armitage (Musselman) — Berwick Heights Road, E. Stroudsburg, Pennsylvania — "Still living and working in my beloved Poconos. Larry and I started our second youth last Summer when we went on our first camping trip to Yellowstone — loaded down our Corvair with sleeping bags, tent, etc. and took off — had a wonderful time! Our daughter, Peggy Ebel, graduated from Penn State this past March. For the past 10 years I have worked as an office nurse after 15 years at the local hospital, most of that time as night supervisor. I started courses at the local college a year ago — should get my degree by our 50th Anniversary.

Mary Sue Banks (Dale) — 865 Orange Blossom Drive, Eau Galle, Florida (32935) — Sue works in a doctor's office in Florida. She loves Florida. She has two daughters, Carolyn and Linda, and has one grandchild.



Rebecca Browning (O'Hara) — Do not have Becky's address but wrote to her c/o her husband, c/o the New York Herald Tribune. Letter was not returned to me so it must have been delivered.

Goldie Byers (Pringle) — 825 Belt Blvd., Richmond, Va. — Housewife — 2 children — a daughter and a son. "Those of you who remember my husband, Herbert, from his affiliation at Jefferson may be interested in knowing that he is Surgical Supervisor at The McGuire Veterans' Hospital here in Richmond. He has 20 years with the Veterans Administration. Our daughter, Charlotte, graduated Phi Beta Kappa from Westhampton College last year and teaches high school English. She will be married in June. Gilbert, our 17 year old son, graduates from high school this year and will attend the University of Virginia in Charlottesville in the Fall to study electrical engineering."

Dorothy Chambers (Rounsaville) — 237 Manhatton, Oak Ridge, Tenn. Dorothy has 3 sons and 2 daughters.

Dorothy Colick (Rosenberg) — 44 Hawthorne Lane, Willingboro, N.J. Husband — Stanley (N. J. Dept. of Health). Elementary School Library Co-ordinator — 2 sons — Archie and Jeff. "Although I am not in the nursing profession anymore, I look forward to seeing my old friends in May. Since our last reunion, my family has lived in Illinois for two years and we have been living in New Jersey for the past two years. We have acquired a second son. Jeffrey came to us from Naples, Italy, in his sixth year. We plan to camp through Europe beginning in June this Summer. We intend to go as far South as Naples. Jeff wants to show us his city. It will be interesting to see how much he has remembered and how much he has forgotten. I hope to see many of you in May."

Catherine Crafton (Lambert) — 260 Normal St., East Stroudsburg, Pa. Supervisor of Central Supply—General Hospital of Monroe County. No children. "Hello to You All!"

Doris Dieterle — 1303 York Ave., New York 21, N.Y.

Florence Eisenbrown — 401 Ashmead St., Cheltenham, Pa.

Mary A. Eisenhart (Fleming) — Box 651, Route 1, Arnold, Md. Mary has one daughter and several dogs at last correspondence.

Judy Elliott (Kesselring) — MR # 50-5033 College Corner Rd., Oxford, Ohio 45056. Judy answered the letter and sends an address but did not send answer to questionnaire — but **this is** her correct address.

Ellora Endicott (Meyer), 27 Brockton Road, Trenton 19, N.J. "Dear Class Members: At present, I'm on leave from my position with the New Jersey State Department of Health. I'm attending the School of Nursing (Graduate Program) University of Pennsylvania. I have to miss the luncheon because on that day I'll be doing research for my project. Sacrifices, always sacrifices!" "Love to all — Endy."

Virginia Falkinburg (Ritter) — N. Main St., Barnegat, N.J.

Eva Fedock (Swantko) — 2172 21st St., Astoria, Long Island.

Margaret Fisher (Reed) — 312 Delaware Ave., Absecon, N.J.

Mary E. Flyte (Rosser) — 137-47 B 68th Drive, Flushing, N.Y. 111367.

Margaret Foor (Miller) — unknown.

Edna Fortner (Feloni), 675 East Pike, Indiana, Pa. 15701. "Hi to All! Have been wanting to get to our luncheon meeting for several years now and am disappointed each year. Felt sure this year I would be able to make it, however, I can't see the possibility just now. If at the last moment I find I can, I'll be there — if not in person, surely in spirit. Would love to see the 'new' Jeff, too. My best to you all and God Bless You." "Kewpie"

Alice Freed (Moore) — 6500 Overland Road, Boise, Idaho. Alice is married to a Minister and they have 5 children.

Violet Garret (Hyman) — 2501 Mansfield Ave., Drexel Hill, Pa. 19026. Housewife — one daughter.

Helen Gipe (Laughry) — 15 First St., Melrose, Mass. Housewife — 3 boys.

Ida Mae Griffiths (Varga) — unknown.

Estelle Hally (McGehean) — 7429 Brockton Rd., Phila., Pa. 19151.

Janet Hicks (Arnold) — 4626 Mitchell Rd., Kingsport, Tenn. 37664. Housewife — 1 child.

Thelma Himmelright — Mechanicsburg, Pa.

Helen Hoffman (Firman) — Box 252C-RFD # 3, Varsity Ave., Princeton, N.J.

Martha ("Polly") Irwin (Reed) — 381 Wolcott Rd., Wethersfield, Conn. Housewife — 7 children — 6 sons and 1 daughter. "My oldest son, Jack, is with the Special Forces Group of the Army at Fort Sam Houston, Texas. The youngest, and only daughter, Abigail, is in kindergarten. Second son is in college and the other four boys at home. I keep quite busy!"

Stella Jedrzierwski (Wawrynovic) — Turnpike Exit, Clearfield RD # 1, Pa.

Helen Job (Enterline) — 8 Church St., Matawon, N.J. 07747. Library Assistant. 2 sons ages 16 and 19. "Best wishes and love to you all." "Joby"

Marion Jones (Tracy) — 21 Cleveland Road, Needham, Mass.

Hope Kramer (Mood) — P.O. Box 216, Perkasio, Pa. Housewife — 5 children — 1 grandchild.

Marion Kustay (Sobiesiak) — Cherryville, Pa.

Hazel Landis (Knepper) — Route 1, Berlin, Pa. Homemaker — 4 sons — 1 daughter. "It doesn't seem possible that 25 years have gone by since we were together at Jeff! For me they have been busy happy years, even though I've never done anything outstanding. In April, 'Hiram' and I will celebrate our 25th Anniversary. We are the proud parents of 4 sons and 1 daughter. Our oldest son is married to a R.N. from Presbyterian Hospital in Pittsburgh. He will graduate from Carnegie Tech. in June with a degree in Electrical Engineering and expects to go to graduate school. Our second son is at Juniata College and wants to study medicine. Our daughter is 16 and a junior in high school. Our two youngest boys are 11 and 12 years old. I hope anyone coming to Somerset County will come to see me."

Janet Lynch (Plant) — 4160 Holly Drive, San Jose, California.

Janet MacDonald (Coats) — Madame Moores Lane, Box 1144, New Bern, N.C.

Dorothy McComb (Talbot) — 3413 45th St., Metairie, La. 1960 report — Dotty married Ray Talbot, a man she met riding on the bus to Philadelphia on her way to enter training at Jeff. They have 2 daughters and one son. In 1957 Dotty received her Master's Degree at Teachers College, Columbia. In 1960 she was an instructor at Louisiana State University, New Orleans, teaching public health nursing to both student and graduate nurses.

Virginia McCrae (Avitable) — 4176 Baychester Ave., Bronx, N.Y. 10466. Part-time Head Medical Nurse, Cross County Hospital, Yonkers. One son — a senior at Bronx High School of Science — plans on college in the Fall. My husband sings at Asti's in Manhattan."

Virginia Mannon (Mutschler) — 222 Cadawalader Ave., Elkins Park, Pa. 19117. Head Nurse — dispensary — Abington Hospital. Two children — Jean and Walter. Three grandchildren — Jean, Raymond and Robin.

Mary Martin (McCoy) — Route 2, Littlestown, Pa.

Roberta Means (Cronk) — unknown.

Alberta Metz, 143 E. Main St., Everett, Pa.



Ruth Nettles (Painter) — 313 W. Cedarville Road, Pottstown, Pa. One daughter.  
Alda Newcomer (Knodel) — 266 Ballymore Road, Springfield, Delaware Co., Pa. 19064. No children. Alda's Gift Shop — Manufactures and sells ceramic gifts. Shop Address: 1012 Lincoln Ave., Prospect Park, Pa.

Marion Novak (Manfredi) — Apt. 2920, 400 E. Randolph, Chicago, Ill.

Virginia Ott (Rowan) — 229 Buttonwood St., Norristown, Pa.

Doris Packer (Engelbrecht) — 8 Richfield Road, West Chester, Pa. 19380.  
“Greetings to all classmates: In 1940, 25 years hence seemed so far into the future and now it is upon us. I have done nothing outstanding, but have had busy happy years. After 23 years in Philadelphia, we shook the dirt from our feet and have resided in West Chester for the past 2 years. The Lord has richly blessed me, and I would ask His blessings on each of you.”

Ruth Paden (Frazer) — 36800 Bauerdale Court, Avon, Ohio 44011. Housewife and night supervisor, Elyria Memorial Hospital, Elyria, Ohio. Has 2 children — a son who is a junior in college and a daughter, a junior in high school.

Elizabeth Parker (Fuhse) — 1610 Montgomery Road, Willow Run, Wilmington, Del.

Margaret Racik (Meyers) — 7030 Supp. Group, APO 12, N.Y., N.Y.

Ellen Remensnyder (Carlton) — 3711 Bayshore Blvd., Tampa, Florida 33611. Housewife — 3 boys. “This will serve as an invitation to visit our family whenever you are in Tampa, Florida. It would be so good to see everyone again and renew and relive old times. We have been living here since 1947 when we left service. My husband went into private practice with his uncle who passed away three years afterwards. Since that time we have taken in two partners and the firm of Carlton, Connor and Blank do general, thoracic and cardiovascular surgery. At this writing, I am planning to attend the luncheon and hope to see everyone then.”

Ruth Ritter (Holbrook) — 398 W. Penn Ave., West Reading, Pa.

Dorothy Schanley (Sumerville) — 1333 Cotton Road, Gladwyne, Pa.

Alma Shaffer (Shofstall) — 6701 W. 56th St., Mission, Kansas. 1960 — Alma has 2 sons and 2 daughters, her husband is ENT specialist. She keeps busy being mother, housewife and helping out in her husband's office several times a week.

Marie Sherin (Maurano) — 18 Charlsmount Ave., Quincy, Mass.

Anna Stranko (Russin) — 136 Moffet St., Plains, Pa.

Averene Summerfield (Murphy) — 530 Madison Ave., York, Pa. 17404. School Nurse — 2 children — 1 grandchild.

Frances Sutton (Weiss) — 1508 National Ave., New Bern, N.C. “Franky” has a son and a daughter.

Sara Van-Tilburg (Cattermole) — Present address — 3435 Upside Court, Falls Church, Va. 22042. Permanent Address — R.D. #1, Box 796, Hamburg, Pa. 19526. Housewife and mother. Four children, George, Jr., 19; Nancy, 18; Betsy, 15; Richard 11.

Thelma Weaver (Taylor) — 421 Park Rd., Mays Landing, N.J. “After twenty-five years, I am still very happy with the same husband in the same house, in the same small town. We added two daughters — Cathy now at Bucknell University and Linda at Oak Crest. I returned to college to complete my program and am now employed as school nurse in Mays Landing Schools. I am enjoying it all very much.”

Sara Werstler — 419 S. 45th St., Philadelphia, Pa. 19104. Sara is Administrative Assistant — School of Nursing at Jefferson.

Bernice Wigglesworth (Sprecher) — 1314 Oak Hill Ave., Hagerstown, Md. Housewife — 4 children, David (13), James (11), Martha Ann (9), Peter (6). Married to Daniel Sprecher, M.D.

Arlene Yost (Conn) — 1070 S. Coldbrook Ave., Chambersburg, Pa.

Norma Ziegler (Smith) — 1821 Glen Ridge Rd., Baltimore, Md. 21234. R.N. School Nurse. Has 3 children. “We've lived in Baltimore since 1946. Our children are 2 girls, ages 21 and 18 and one boy, age 16. All are still in school. For the last six years I've been a school nurse at Ridgefield School for mentally retarded children. This year our school is enlarging and we will also receive physically handicapped children.”

**In Memoriam:** With deep sadness and regret we list the following obituaries: Caroline Kemmerer—1951; Claire Maxwell (Wallace)—1957; Jane Owens (Goodman)—1959; Gladys Hoffman (Brundate)—1963.

1941 **W.H.**—Maria Josephine Malinowski DiMarco, 1002 Cobbs St., Drexel Hill, Pa. 19026 — Inactive in Nursing. Son, Salvatore, Jr., Freshman at Temple University. Son, Joseph John, 1st grade.

1942—Virginia Hauser Heckman, #2 Virginia Ct., Huntington, W. Va. 25701 — My son will graduate from Princeton University in June and next September will enter Jefferson Medical College.

Mary Jane Lardin Braid, McLean, Ill. 61754 — Elizabeth is a Freshman at Illinois State University. Neil is a Junior and Tom a Freshman in High School. I do occasional private duty. Bill is running for Mayor of McLean.

Dorothy Edgar Burns, U.S./AID, APO 09843, New York, N.Y., married Felix J. Burns, Jr.

Georgiana Wanders Green, 520 Calvin Lane, Rockville, Md. 20851 — My husband, Arthur, died on Sept. 25, 1964. I have been engaged in Public Health Nursing for a number of years. I am entering the University of Maryland to advance my education.

1943—Marion Rutter Morris, 6010 Glendora, Dallax, Texas 75230 — Our oldest son, Don, has received a four year athletic (football) scholarship to Tulane University.

1944—Janet Beyer, 14 Island Ave., Kittery, Me. 03904 — LCDR NC USN.

1945—Marjorie J. Wilson, 43d Surg. Hosp. (MA), APO San Francisco 96358 — Received the Army Commendation Medal in July 1964 for my time assigned to Office of the Surgeon General, Washington, D.C. from July 1960 - Dec. 1963. Now in Korea and will be assigned to Ft. Belvoir upon rotation June 1965. Promoted from Major to Lt. Colonel — Aug. 1964.

Caroline Roberts King, 2636 E. Overlook Rd., Cleveland, Ohio 44106 — I have not been active in nursing but keep busy with four children, P.T.A., Scouts, Church. Was President of the Cleveland Clinic wives group last year. John is Director of Clinical Laboratories at the Cleveland Clinic Foundation. As a family we enjoy camping and canoeing.

1948—Doris Burke Hano, 3501 Spann, Huntsville, Ala. — My husband has accepted a permanent transfer to this city for work on the project of Apollo — the space project of placing a man or men on the moon.

1949—Lois M. Pennypacker, 100 F. Charles Drive, Bryn Mawr, Pa. 19010 — Received B.S. degree in Nursing at University of Pennsylvania Dec. 1964. After which I returned to Bryn Mawr Hospital as assistant to the Associate Director of Nursing Service.

Hazel Sheckler Kogler, 802 Rugby Rd., Phillipsburg, N.J. — Married 1955 to Henry Kogler, Psychologist — Chief Psychologist at Annandale Farms — formerly taught for 10 years at Lafayette College. Children — Anne, 9 years; Paul, 8 years.



Elsie Skvir, 1009 Pine St., Phila., Pa. 19107 — New teaching position as of September 1, 1965 in the Hospital Schools Science Program at the University of Pennsylvania.

Ruth Lange Wettig, 5890 S.W. 50th Terrace, Miami, Fla. 33155 — Medical Assistant in Doctor's office for past seven years.

1950—Nancy Stevens, 2 Simpson Road, Somerset, N.J. 08873 — Awarded Karr Undergraduate Scholarship by Smith, Kline and French Labs. in 1964; currently enrolled as full time student at Rutgers U.; plan to continue education to Doctoral degree in Virology.

Helen L. Sheriff Richtor, 204 Central Ave., Oil City, Pa. 16302 — Have four children under 6 — began spring housecleaning — 3 rooms done — 12 more to go — plus 36 more windows, plus storm windows, 4 storm doors, 4 porches, cellar and yard!!! If I report I'm in a "rut" — 'tis why.

Barbara Fisher Ackerman, Apple Brook Farm, Linfield, Pa. 19468 — Husband — dentist in general practice. Children — Meredith Ann, 10 years; Eugene Balliet, 8 years; Barbara Ann, 6 years. Recently bought an old farm (40 acres) — house dates 1790 — having a great time redecorating it and collecting antique furniture — American primitives and Queen Anne and Chippendale pieces.

Mary Louise Moore, Brumbaugh, 7337 Central Ave., Lemon Grove, Calif. 92045 — Husband (Simon C., Jr., Jefferson '50), Chief of Staff at Grossmont Hospital, La Mesa, Calif. I'm finishing 2 year term as Councilor for San Diego Medical Auxiliary, on the state board, plus 2 P.T.A.s, Church Circle leader and raising my 5 daughters.

Grace Edna Schersching Atkinson, Greensboro, N.C. 27401 — I am now involved in Candy Striper Organization at local hospital. Begun 5 years ago and a great thing here for teenagers interested in medical future — willing to do volunteer work.

1951—Nancy E. Thompson (Hille), 42 Woodhall Ave., Juniper Green, Edinburgh, Scotland. Will be married June 5, 1965 in Scotland. Discharge from United States Air Force in England May 31, 1965.

Marion Hoffman Narbuth, 277 Washington Ave., Williamstown, N.J. — My husband, Capt. Benjamin Narbuth, a nurse-anesthetist in the ANC, will be graduating from the U. of Md. in June (B.A. in general studies). In January he will be reporting to a new assignment in Germany.

Norma Jones Murray, 609 Summit, Fostoria, Ohio 44830 — Married James A. Murray, M.D. (Jefferson Class of '55) — have four children — 1 girl, Lindsay, 9 years; and three boys—Jimmy, 7 years; Scott, 5 years; Stuart, 8 months. Playing the role of mother, harried housewife and nurse — and when time permits, I reflect on the "good old days" at Jefferson.

1952—Joyce Graves Leshner, 417 West End Ave., Akron, Ohio 17501 — I had a baby boy December 23, 1964.

Jeanne T. Flanagan Ryan, 210 D Chester Ave., Yeadon, Pa. 19051 — Married to Daniel W. Ryan on October 3, 1964.

Nancy Groh Messick, 729 Stanwick Rd., Moorestown, N.J. 08057 — My husband, Dr. R. Richard Messick, has his office in Moorestown. He does OB-Gyn. We have three children: Debbie, 8; Lisa, 6; and Dicky, 3. That's about it from here.

1953—Gertrude Lange Amend, 721 Fillwood Rd., Phila., Pa. 19115 — My husband, Hans Amend, AIA, has recently been accepted by the American Institute of Architects as a corporate member of the association. Mr. Amend is presently building a home in Devon, Pa.

1954—Doris Henry Innes, 254 Jordan St. (NPC), Venice, Fla. 33595 — My husband, (Robert Innes) died June 20th, 1964. Mrs. Elva I. Henry (mother of Doris) wrote that he was buried at Beverly National Cemetery, Burlington, N.J. with military honors. Doris is living at the above address with her three children: Dana, 10 years; Donna, 8 years; Debbie, 6 years.

Loralee Carter Davis, 1273 Mulberry Ave., Atwater, California — Has two boys and one girl.

Mary Lee Kuntz Stoudt, 3 Niva Court, McLean, Va. — Has two boys and one girl.

1954—Helen Marie Fetsko Besecker, Quarters 5, U.S.N. Hospital, Annapolis, Md. — My husband, Lt. Comdr. J. A. Besecker, has resigned as Chief of Pediatrics, U.S.N. Hospital and will be entering private practice of Pediatrics in Lancaster, Pa. as of July or August 1965.

1955—Adrienne Marasco Rodgers, 227 N. Lansdowne Ave., Lansdowne, Pa. — Husband, Joseph F. Rodgers, M.D. "Director of the Division Home Care" (Medicine). Children: Pamela, 6½; Donna, 4½; James, 10 months.

1956—Florence Roche, 573 E. Tabor Rd., Phila., Pa. 19120 — O.R. Supervisor.

Marlene Ambrose Mika, 118 S. White St., Shenandoah, Pa. 17976 — Four children: John Joseph Mika, 6 years; Edward Ambrose Mika, 5 years; Jayne Mary Mika, 4 years; Jessica Mary Mika, 1½ years.

Betty Doane Pilegor McElroy, R.D. #2, Moscow, Pa. 18444 — Husband — Minister of Elmhurst Presbyterian Church as of Nov. 1, 1964. Adopted baby girl — Mary Elizabeth — arrived April 1, 1965.

Jean Krasnisky Coughlin, 138 Olympia Ve., North Providence, R.I. 02911 — Husband in practice OB-Gyn, Providence. Three children: one boy, two girls, ages 6 — 5 — 2.

1957—Betty Jane Hassenplug Graham, 234 Oakwood Circle, Danville, Va. 24541 — We are presently living in Danville, Va., where my husband is taking a residency in Urology. We have a daughter, Lisa, and a son, Jeffery. We are all enjoying the relaxed pace of Southern living.

Georgann Jacobs Miller, 516 Centre Ave., Newtown, Pa. 18940 — As of May, I will take over duties as newly elected President of Newtown Junior New Century Club.

1958—Joan C. Harmer Tribolet, 5231 Oxford Ave., Phila., Pa. 19124 — My husband, Bob, recently spent some time in Thule, Greenland, for Philco Corporation. Interesting experience! Also — Bob will graduate from Drexel in June with a Master's degree in Business Administration.

Linda Doll Eppley, 98 Church St., Enosburg Falls, Vt. — Daughter, Rebekah Anne, born January 30, 1965.

Darlene Sylvia Stoudt Bleile, Tammany Street, Orwigsburg, Pa. 17961 — Husband and I are opening a television and radio sales and service. We will be selling RCA merchandise. Also have a lovable baby boy.

1959—Vera Stevens Myers, 420 Leedon St., Jenkintown, Pa. 19046 — New baby boy — November 20, 1964.

Betty R. Rockafellow Laird, R.D. #2, Englishtown, N.J. 07726 — A third daughter was born on Feb. 14, 1965. She was a RH baby and had one exchange transfusion but is doing fine now. She weighed 5 lbs. 9 oz. at birth.



Nancy Ann Wood Cohen, 48 N. Fordham, Topeka, Kansas — Worked as Staff Evening Nurse at Columbia Presbyterian Medical Center from 1960 to 1963. Married in 1963 to a pediatrician and we are now finishing our time in Air Force. We will return to NYC this summer — job — 2 year fellowship in pediatric gastroenterology. I will work again at Presbyterian.

Judith Wright Bloes, 504 Washington Ave., Jermyn, Pa. 18433 — I was recently made Secretary of Jermyn Branch of Visiting Nurse Association Board of Lackawanna County. Have three children: Wally, 5 years; Lisa, 3 years; Amy, 11 months. Husband still engaged in general practice.

Gloria S. Corzen, 2423 Middle Ave., Norfolk, Va. 23504 — Have received a Master's degree from the University of Pennsylvania in December 1964 and am now teaching Pediatric Nursing in an A. D. Program.

Joanne Longfellow Peterson, Frist Rd., Colora, Md. 21917 — My husband, Maj. (Ret.) Soren A. Peterson, and I announce the adoption of our daughter, Lori Jo, on June 24, 1964. This is our first child.

**1960**—Doloers Carrozzino Pascoe, 3415 Barry Paul Rd., Randallstown, Md. 21133 — Married June 2nd, 1962. Have a son two years old.

Madeline Henly Glass, Hardenburgh Rd., Pine Bush, N.Y. 12566 — My husband has earned his Master's degree in Elementary Education and we have a third son, Benjamin Chad, born Jan. 21, 1965.

Rhoda Smeltzer Little, 1549 Burmont Rd., Drexel Hill, Pa. 19027 — Daughter born December 13, 1964 — Robin Kimberly Little.

Phyllis Parry Kolander, 328 Maple St., Scranton, Pa. 18505 — Married May 17, 1963. Assistant Head Nurse at Moses Taylor Hospital, Scranton, Pa.

**1961**—Patricia Ann Caldwell Turnbull, 50 S. Morrison St. Apts., Memphis, Tenn. 38103 — Husband, Ronald, honorable discharge from Public Health Service as 1st Lt. Chief Pharmacist for 2 years active duty in Mt. Edgacumbe, Alaska (now — Master's degree student at U. of T. Son — Mark — born Sept. 22, 1962.

Margaret Zarella, 175 Marlborough Rd., Upper Darby, Pa. 19082 — Been made Assistant Head Nurse Pav.-Jefferson.

Stephanie Arnold Boogly — wishes to thank her classmates for the green plant that was sent when her husband died, also the Alumnae Association.

**1962**—Marcie Grieshaber Moore, 20 C Lakeside Apts., Mountain & Valley Rds., Melrose Park, Phila., Pa. 19126 — Promoted to Head Nurse (10th Pavilion) in July 1964.

Barbara Julius Brooks, 10 B Kirby Rd., Saratoga Springs, N.Y. 12866 — Graduated from Millersville State College June 1964 with a B.S. Ed. Married Lt. Linton P. Brooks, U.S.N., a staff member of the N.P.T.U. at West Milton Site, N.Y. — Oct. 24, 1964.

Patricia Ann Thomas Goetz, Box 4, Greencastle, Pa. — Am still a staff nurse.

Phyllis Sutthill Johnson, 2606 E. 21st St., Odessa, Texas 79760 — My husband, William, has gained a promotion and transfer to Odessa, Texas — he is now a senior technologist with Shell Oil Co. I have gained a reciprocity in the State of Texas as an R.N. and am a Supervisor in a local nursing home.

**1963**—Sharon Beicker Sites, 203 S. Braddock Ave., Pittsburgh, Pa. 15221 — Am working as a staff nurse in the Operating Room at Columbia Hospital, Pittsburgh, Pa.

Margaret Anne Turner, 543 N. Main St. Ext., Meadville, Pa. 16335 — I am no longer doing General Duty at Meadville City Hospital, but I am now "Private Scrub Nurse" for one of Meadville's busiest general surgeons.

Ann Camilli, 1297 Sayrs Ave., Camden, N.J. — I have recently taken the position of Hospital Nurse Epidemiologist at Jefferson.

Mary Elizabeth Speicher, 12-B Leroy Ave., Berlin, N.J. 08009 — I will be getting married August 28, 1965. My married name will be: Mrs. James Joseph Gillin. The address will remain the same.

Jean Allen McConnell, 10900 Bustleton Ave., Apt. A98, Phila., Pa. 19116 — Married.

**1964**—Jane Cox Gay, 315 S. 22nd St., Phila., Pa. 19103 — We have a son, James Andrew, born January 19, 1965, at Jefferson Hospital. My husband, Andrew G. Gay, opened a general law practice at 610 N. 16th St., Phila., Pa. 19130.

Stephanie Records Seipel, 250 S. Alder St., Phila., Pa. 19107 — Married.

Patricia Insley, 801 Alvin Ave., Salisbury, Md. 21801 — I received my Maryland license to be married to Marine Cpl. David L. Orr, May 29th, 1965, here in Salisbury. We will be living in Jacksonville, North Carolina.

---

#### INSTITUTIONS AFFILIATED WITH JEFFERSON MEDICAL CENTER

The Germantown Hospital and Dispensary became closely affiliated with Jefferson Medical College and Hospital in 1949.

In 1949, the Lankenau Hospital became affiliated with Jefferson Medical Center.

In 1950, the Methodist Hospital became affiliated with Jefferson Medical Center.

In 1951, the Cooper Hospital, Camden, New Jersey, became affiliated with Jefferson Medical Center.

In 1956, the Veterans Administration Hospital became affiliated with Jefferson Medical Center.

In 1957, the Misericordia Hospital became affiliated with Jefferson Medical Center.

In 1957, the Devoreaux Schools, located in Devon, Pennsylvania, became affiliated with Jefferson Medical Center.

In 1958, the Episcopal Hospital became affiliated with Jefferson Medical Center.

In 1959, the Jefferson Medical College formalized an association with the Lovelace Foundation for Medical Education and Research in Albuquerque, New Mexico, with special reference to Aviation Medicine.

In 1964, Friends Hospital in Philadelphia and the Delaware State Hospital, Newcastle, Delaware, became affiliated with Jefferson Medical Center for the instruction of medical students in Mental Health.



JOIN YOUR ALUMNAE ASSOCIATION

USE YOUR MAIDEN NAME

Whenever you have occasion to write your Alumnae, PLEASE use your first name, maiden name, married name, and the year you graduated.

Example: Jean Lawrence Monroe, 1940

"Mrs. Harold Monroe" makes it very difficult for us to locate your card in the files. Thank you.

Every effort has been made to obtain correct names and addresses for all alumnae.

You are urged to notify the Secretary of the Alumnae Association of any corrections, marriages, deaths, and changes of address.

PLEASE NOTE

The ALUMNAE BULLETIN will be sent to members only. Non-members may obtain these upon request, at the cost of \$1.00 per copy. Order your Bulletin by May 1st.

Jefferson caps may be purchased at C. D. Williams and Company, 246 South 11th St., Philadelphia, Pa. 19107. Cost per cap is 60¢.

Identification necessary to make purchase.

Jefferson pins may be purchased at J. E. Caldwell and Company, Chestnut and Juniper Sts., Philadelphia, Pa. Cost per pin is \$9.34.

Identification may be obtained from Miss Mabel Prevost, Assistant Director, Jefferson Hospital, 11th and Walnut Sts., Philadelphia, Pa. 19107.

Jefferson Graduates' Cook Book  
"FAVORITE RECIPES"

\$2.00

Jefferson Nurses' Alumnae Association, 11th & Walnut Sts., Phila., Pa. 19107  
Att.: Margaret Cossman



