

---

5-7-2015

## 2015 CREATE Day Presentations in the JDC

Daniel G. Kipnis, MSI

Thomas Jefferson University, kipnis007@gmail.com

Follow this and additional works at: <https://jdc.jefferson.edu/jdcnews>



Part of the [Occupational Therapy Commons](#)

[Let us know how access to this document benefits you](#)

---

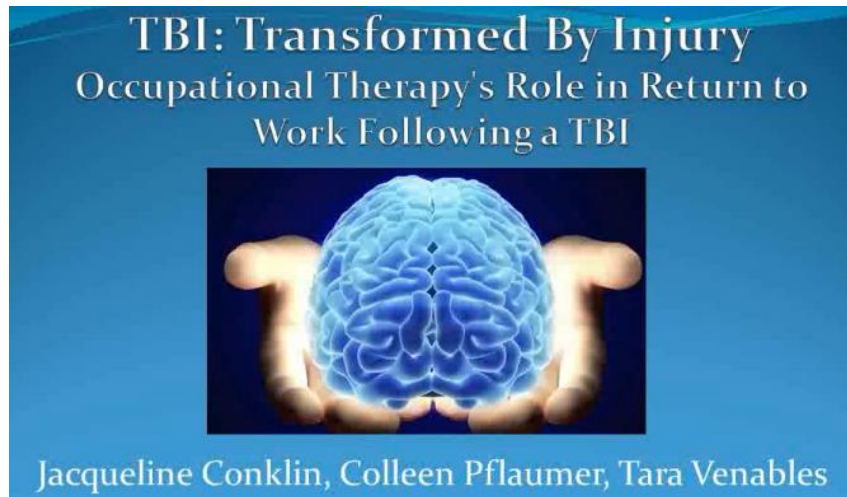
### Recommended Citation

Kipnis, MSI, Daniel G., "2015 CREATE Day Presentations in the JDC" (2015). *Jefferson Digital Commons News*. Paper 27.

<https://jdc.jefferson.edu/jdcnews/27>

This Article is brought to you for free and open access by the Jefferson Digital Commons. The Jefferson Digital Commons is a service of Thomas Jefferson University's [Center for Teaching and Learning \(CTL\)](#). The Commons is a showcase for Jefferson books and journals, peer-reviewed scholarly publications, unique historical collections from the University archives, and teaching tools. The Jefferson Digital Commons allows researchers and interested readers anywhere in the world to learn about and keep up to date with Jefferson scholarship. This article has been accepted for inclusion in Jefferson Digital Commons News by an authorized administrator of the Jefferson Digital Commons. For more information, please contact: [JeffersonDigitalCommons@jefferson.edu](mailto:JeffersonDigitalCommons@jefferson.edu).

## [2015 CREATE Day Presentations in the JDC](#)



**Collaborative Research and Evidence Among Therapists and Educators (CREATE) Day** is a clinical education program presented by occupational therapy graduate students in partial fulfillment of the Master of Science degree in Occupational Therapy at Thomas Jefferson University. Students conduct a systematic review of the literature on key topic areas that reflect current occupational therapy practice trends. The presentations include an introduction of the topic literature.

The latest round of 2015 Collaborative Research and Evidence Among Therapists and Educators (CREATE) Day presentations have been loaded into the Jefferson Digital Commons:

- [Traumatic Brain Injury \(TBI\): Transformed By Injury Occupational Therapy's Role in Return to work following a TBI](#)
- [A Systematic Review: Evaluating the Effectiveness of Cognitive Standardized Assessments Following Stroke in Acute Care](#)
- [Systematic Review: Occupational Therapy & Improving Social Participation for At-Risk Youth in School](#)
- [A Systematic Review of the Literature: Cognitive Behavioral Therapy Interventions for Depression](#)

Access the [CREATE Day archive](#) back to 2013.

Posted: May 7, 2015: <http://library.jefferson.edu/librarynews/?p=6885>