

5-31-2020

As the COVID-19 pandemic drags on, where have all the STEMIs gone?


Waqas Ullah
Abington Jefferson Health

Yasar Sattar
Icahn School of Medicine at Mount Sinai Elmhurst Hospital

Rehan Saeed
Abington Jefferson Health

Asrar Ahmad
Abington Jefferson Health

Margot I. Boigon
Abington Jefferson Health
Follow this and additional works at: <https://jdc.jefferson.edu/abingtonfp>

 Part of the [Cardiology Commons](#), and the [Infectious Disease Commons](#)
See next page for additional authors

[Let us know how access to this document benefits you](#)

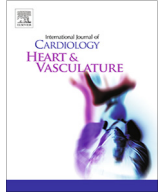
Recommended Citation

Ullah, Waqas; Sattar, Yasar; Saeed, Rehan; Ahmad, Asrar; Boigon, Margot I.; Haas, Donald C.; and Chadi Alraies, M., "As the COVID-19 pandemic drags on, where have all the STEMIs gone?" (2020). *Abington Jefferson Health Papers*. Paper 22.
<https://jdc.jefferson.edu/abingtonfp/22>

This Article is brought to you for free and open access by the Jefferson Digital Commons. The Jefferson Digital Commons is a service of Thomas Jefferson University's [Center for Teaching and Learning \(CTL\)](#). The Commons is a showcase for Jefferson books and journals, peer-reviewed scholarly publications, unique historical collections from the University archives, and teaching tools. The Jefferson Digital Commons allows researchers and interested readers anywhere in the world to learn about and keep up to date with Jefferson scholarship. This article has been accepted for inclusion in Abington Jefferson Health Papers by an authorized administrator of the Jefferson Digital Commons. For more information, please contact: JeffersonDigitalCommons@jefferson.edu.

Authors

Waqas Ullah, Yasar Sattar, Rehan Saeed, Asrar Ahmad, Margot I. Boigon, Donald C. Haas, and M. Chadi Alraies



As the COVID-19 pandemic drags on, where have all the STEMIs gone?



To the Editor,

In the midst of current pandemic individuals with all sorts of medical ailments are afraid to venture into health-care settings and risk contracting Coronavirus disease 2019 (COVID-19). Irrespective of the inherent thromboembolic risks associated with COVID-19, this puts patients at high risk of cardiac complications.

A 36-year-old male was brought to the emergency department (ED) after being found unresponsive at home. History was limited, given his condition. He was last seen normal over 15 h ago. He had no significant past or family medical history. He denied any use of alcohol or smoking. In the ED, he was febrile (101.2F°) and hypotensive 78/59 mm Hg. His oxygen saturation (SaO₂) was 78%. Laboratory investigations revealed leukocytosis (16,760/uL), elevated d-dimer of 48,648 ng/mL (normal < 0.50 ng/ml) and serum troponin-T (TnT) of 1.86 ng/L, which peaked to 44.4 ng/L (normal < 0.10 ng/L). Electrocardiogram revealed ST-segment elevation in the anteroseptal leads (V2-V4). (Fig. 1) Transthoracic echocardiography (TTE) showed extensive septal, anterior and apical akinesia with an apical left ventricular (LV) thrombus and a reduced ejection fraction of 35%. (Fig. 2) He was intubated for hypoxia and was started on norepinephrine infusion for hypotension. His chest x-ray and computed tomography showed multifocal infiltrates. He received aspirin, clopidogrel, atorvastatin and a

heparin infusion for a presumed subacute ST-segment elevation myocardial infarction (STEMI). The following day his nasal swab test for real-time polymerase chain reaction (RT-PCR) returned positive for acute respiratory syndrome coronavirus-2 (SARS-CoV-2). He was treated with an 80 mg single dose of tocilizumab and hydroxychloroquine 400 mg twice a day on the first day followed by 200 mg twice a day for the next 4 days. Post-extubation, he revealed that he had been having substernal chest pain for

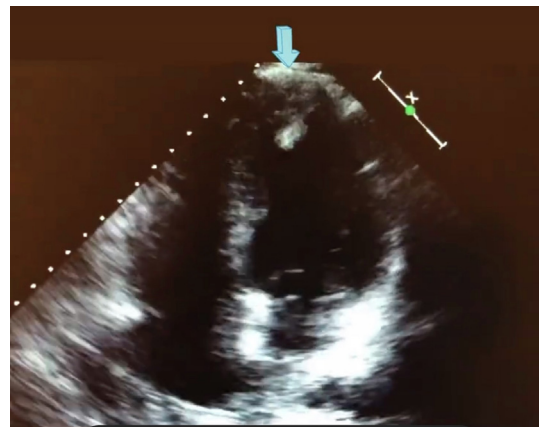


Fig. 2. TEE, apical view showing an apical thrombus (arrow).

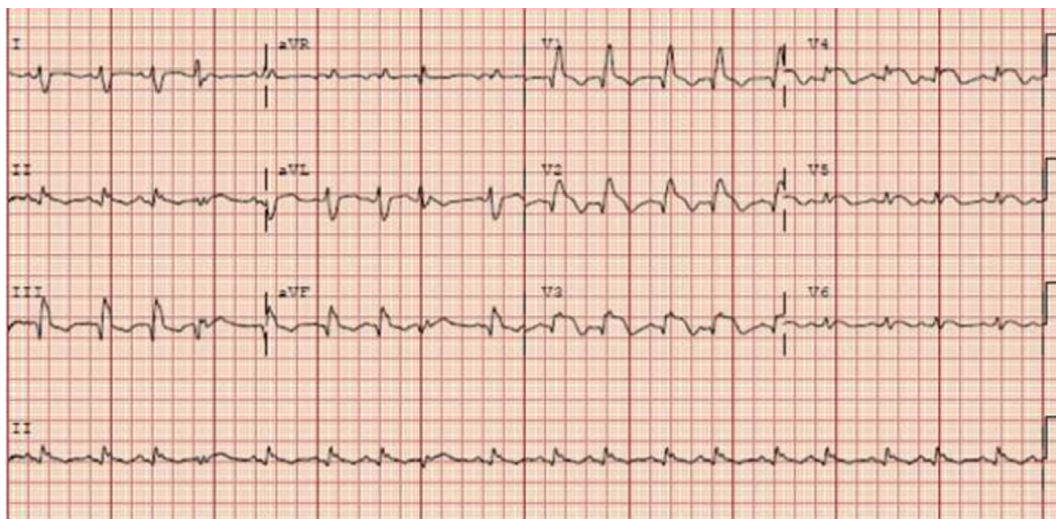


Fig. 1. EKG showing ST-elevation in leads v2-v4 indicating anteroseptal wall myocardial infarction.

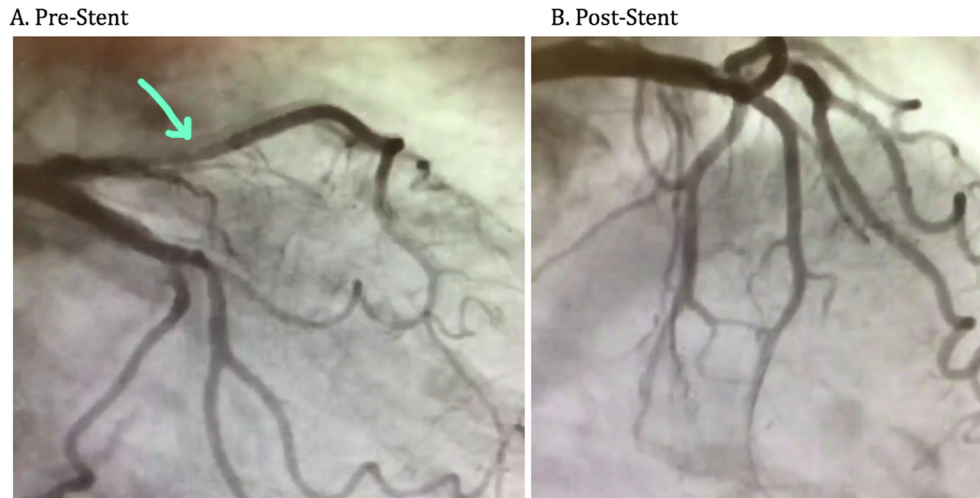


Fig. 3. A. Angiography demonstrating left anterior descending artery occlusion (arrow), B. with an adequate restoration of blood flow post-stenting.

several hours before losing consciousness but had not sought care earlier due to fear of getting COVID-19 in the hospital. He refused further workup and was discharged home with a plan to continue aspirin, clopidogrel, atorvastatin in addition to carvedilol and lisinopril post-discharge. A week later, he had an elective left-sided angiography demonstrating a 99% occlusion of the left anterior descending artery (LAD), a drug-eluting stent was deployed with an adequate restoration of blood flow. (Fig. 3) He was advised to be compliant with his medications and subsequent cardiology follow-ups.

The novel Coronavirus Disease 2019 (COVID-19) is a generation-defining global pandemic; the scale, scope and pace of which is unprecedented. Despite the high rate of cardiovascular complications, contemporary reports show that COVID-19 concerns have prompted patients to delay seeking emergent care, reducing the number of STEMI cases.[1,2] This is presumptively being attributed to patients being reluctant to go to the hospital even in dire circumstances and possibly underdiagnosis in overwhelmed ED's, the former being the case in our patient. [1]

Recently, a United States (US) model from 9 major centers observed a 38% drop in total STEMI activations.[3] This is similar to a 40% reduction noted in Spain.[4] The early Hong Kong experience demonstrated a significant delay in the time of symptom onset to the first medical encounter by about 318 min.[2] These findings are particularly concerning given that COVID-19 itself can be a cause of STEMI due to microthrombi, cytokine storm, coronary spasm, or direct endothelial injury, furthermore acute coronary syndrome occurring in COVID-19 patients has been associated with a worse prognosis. [5,6] Reluctance to visit a hospital due to fear of morbidity related to COVID-19 only adds to time delays in managing STEMI due to increased precautionary measures and accessory testing in the ED, delayed triaging, short staffing and slow activation of cardiac catheterization labs, putting patients at risk of worse clinical outcomes.[2]

The specific treatment protocols for STEMI patients with COVID-19 have been evolving. Early recommendations from the Wuhan experience included intravenous thrombolysis as first-line therapy for STEMI patients with confirmed COVID-19 given that most hospitals do not have protected cardiac catheterization labs and coronary care units for respiratory borne illnesses.[7] More recently, the Society of Cardiovascular Angiography and Intervention (SCAI) recommendations favored continuation of the current standard of care (percutaneous intervention) in COVID-19 patients, though recognize that this may change if hospital systems become further overwhelmed.[8]

In our case, the collision between COVID-19 induced STEMI and a reluctance to seek urgent care led to catastrophic complications. The reduced ejection fraction, cardiogenic shock and the early development of an LV thrombus seen in this case can be attributed to not only the late presentation but perhaps also a consequence of COVID-19 specific hypercoagulable state. Elevated D-dimer, raised troponin levels and EKG abnormalities prompted a high suspicion for ACS even in a hitherto healthy person with no conventional cardiovascular risk factors.

While remarkable public health efforts are ongoing, we advocate for increased public awareness of cardiovascular complications of COVID-19 and the need to seek early medical attention.

Disclosure: None

Industrial Relationship/Financial Disclosure: None

Appendix A. Supplementary data

Supplementary data to this article can be found online at <https://doi.org/10.1016/j.ijcha.2020.100550>.

References

- [1] Oriol Rodríguez-Leor, Belén Cid-Álvarez, Soledad Ojeda, Javier Martín-Moreiras, José Ramón Rumoroso, Ramón López-Palop, Ana Serrador, Ángel Cequier, Rafael Romaguera, Ignacio Cruz, Armando Pérez de Prado, Raúl Moreno, Impacto de la pandemia de COVID-19 sobre la actividad asistencial en cardiología intervencionista en España, RECIC (2020), <https://doi.org/10.24875/RECIC.M20000120>.
- [2] Tam CF, Cheung KS, Lam S, et al. Impact of Coronavirus Disease 2019 (COVID-19) Outbreak on ST-Segment-Elevation Myocardial Infarction Care in Hong Kong, China. *Circ Cardiovasc Qual Outcomes*. 2020 Mar 17; [Circoutcomes120006631](https://doi.org/10.1161/CIRCOUTCOMES.120006631).
- [3] Crystal Phend: Medpagetoday. 2020 April 11: <https://www.medpagetoday.com/infectiousdisease/covid19/85922>
- [4] S. Garcia, M.S. Albaghdadi, P.M. Meraj, C. Schmidt, R. Garberich, F.A. Jaffer, S. Dixon, J.J. Rade, M. Tannenbaum, J. Chambers, P.P. Huang, Reduction in ST-Segment Elevation Cardiac Catheterization Laboratory Activations in the United States during COVID-19 Pandemic, *Journal of the American College of Cardiology*. (2020).
- [5] ST-Segment Elevation in Patients with Covid-19 – A Case Series, *NEJM*, April 17, 2020, DOI: 10.1056/NEJMc2009020
- [6] G.G. Stefanini, M. Montorfano, D. Trabattini, et al, ST-Elevation Myocardial Infarction in Patients with COVID-19: Clinical and Angiographic Outcomes, *Circulation* (2020 Apr 30).
- [7] J. Zeng, J. Huang, L. Pan, How to balance acute myocardial infarction and COVID-19: the protocols from Sichuan Provincial People's Hospital, *Intensive care medicine*. 11 (2020 Mar) 1–3.
- [8] M. Szerlip, S. Anwaruddin, H.D. Aronow, M.G. Cohen, M.J. Daniels, P. Dehghani, D.E. Drachman, S. Elmariah, D.N. Feldman, S. Garcia, J. Giri, Considerations for cardiac catheterization laboratory procedures during the COVID-19 pandemic, *Catheter Cardiovasc Interv* (2020).

Waqas Ullah ^{a,*}
Yasar Sattar ^b
Rehan Saeed ^a
Asrar Ahmad ^a
Margot I. Boigon ^a
Donald C. Haas ^a
M. Chadi Alraies ^c

* Corresponding author at: 1200 Old York Road, Abington, PA, USA.
E-mail addresses: Waqasullah.dr@gmail.com (W. Ullah), mdyasar-sattar@gmail.com (Y. Sattar), alraies@hotmail.com (M.C. Alraies)

Received 13 May 2020

Received in revised form 25 May 2020

Accepted 27 May 2020

Available online 31 May 2020

^a *Abington Hospital-Jefferson Health, Abington, USA*

^b *Icahn School of Medicine at Mount Sinai- Elmhurst Hospital, NY, USA*

^c *Detroit Medical Center, MI, USA*