
Thomas Jefferson University - A chronological history and alumni directory, 1824 - 1990, edited by Frederick B. Wagner, Jr., MD, and J. Woodrow Savacool, MD, 1992.

Jefferson History and Publications

January 1992

Part I: Jefferson Medical College 1906 to 1914 (pages 265-298)

Follow this and additional works at: <https://jdc.jefferson.edu/wagner1>

 Part of the [History of Science, Technology, and Medicine Commons](#)

[Let us know how access to this document benefits you](#)

Recommended Citation

"Part I: Jefferson Medical College 1906 to 1914 (pages 265-298)" (1992). *Thomas Jefferson University - A chronological history and alumni directory, 1824 - 1990, edited by Frederick B. Wagner, Jr., MD, and J. Woodrow Savacool, MD, 1992.*. Paper 22.
<https://jdc.jefferson.edu/wagner1/22>

This Article is brought to you for free and open access by the Jefferson Digital Commons. The Jefferson Digital Commons is a service of Thomas Jefferson University's [Center for Teaching and Learning \(CTL\)](#). The Commons is a showcase for Jefferson books and journals, peer-reviewed scholarly publications, unique historical collections from the University archives, and teaching tools. The Jefferson Digital Commons allows researchers and interested readers anywhere in the world to learn about and keep up to date with Jefferson scholarship. This article has been accepted for inclusion in *Thomas Jefferson University - A chronological history and alumni directory, 1824 - 1990*, edited by Frederick B. Wagner, Jr., MD, and J. Woodrow Savacool, MD, 1992. by an authorized administrator of the Jefferson Digital Commons. For more information, please contact: JeffersonDigitalCommons@jefferson.edu.

In this year, Professorships in the basic science courses of the Medical College (Anatomy, Physiology, Pathology, Bacteriology, and Chemistry) were established as fulltime teaching and research positions.

Three members of this class of 200 advanced to positions of importance on the Jefferson Faculty. Best remembered was Edward J. Klopp (Philadelphia College of Pharmacy and Science, 1901), who went on to Jefferson Hospital Internship following graduation. He was then appointed Chief Resident Physician which led to contacts with the leaders in the Department of

Surgery. He began his surgical career on the staff of Dr. Francis T. Stewart and also served under Dr. John H. Gibbon, Sr., both of whom had high regard for his talents. Dr. Klopp advanced in clinical surgery at Jefferson and Pennsylvania Hospitals and acquired a large practice. In 1931 he was named Co-Chairman of the Department of Surgery (Fig. 167) and continued in that post until his early death in 1936. He delivered the first Grace Revere Osler lectures which Lady Osler had endowed in memory of her first husband, Dr. Samuel W. Gross. Dr. Klopp was also President of the Alumni Association in 1930.



Fig. 167. Edward J. Klopp (JMC, '06), Co-Chairman of Surgery (1931-36).



Fig. 168. Arthur E. Billings (JMC, '06), Clinical Professor of Surgery (1930).

Arthur E. Billings, a native of North Carolina (Davidson College), joined the Department of Surgery following Jefferson residency and progressed to the rank of Clinical Professor in 1930 (Fig. 168). He was also Surgeon to Bryn Mawr Hospital and acquired a large practice.

Willard H. Kinney (Fig. 169) joined the Department of Genito-Urinary Surgery and advanced to the rank of Clinical Professor of Urology in 1930. He was also Genito-Urinary Surgeon to the Philadelphia General Hospital. Following service in World War I he continued as Lieutenant-Commander in the United States Naval Reserve. He was author of numerous scientific papers and continued his activities at Jefferson until his resignation in June, 1942.

Among the early black graduates of Jefferson were Paul J. Taylor and Henry M. Minton of this

class. Both became active in the treatment of tuberculosis. Dr. Taylor was on the staff of the Jefferson Department for Diseases of the Chest, 238 Pine Street, in addition to his private practice in Philadelphia. Dr. Minton, previously educated at the Academy of Harvard University and Phillips Exeter Academy, graduated from the Philadelphia College of Pharmacy in 1895. He practiced pharmacy for seven years but went on to Jefferson to graduate with this class after which he joined the staff of Douglass Hospital and also of the Henry Phipps Institute for the treatment of Tuberculosis. His association with Phipps continued until his death in 1946 (Fig. 170). He also became Superintendent and Director of Mercy Hospital for 24 years during which time Mercy merged with Douglass to form Mercy-Douglass Hospital.

CLASS OF 1906

Adams, Ralph Crowe, PA
 Alexander, William Archibald, PA
 Aydelotte, John Thomas, PA
 Bachman, Milton Homer, PA
 Baird, Joseph Armstrong, PA
 Barnette, William Mason, CT
 Barr, William Henry, CT
 Beatty, Arthur William, MD
 Beebe, James, DE
 Benjamin, Floyd Allen, NY
 Berkeley, Green Ramsey, GA
 Betts, George Warren, PA
 Bigley, Francis Peter, PA
 Billings, Arthur Eugene, NC
 Blosser, Roy, GA
 Boice, James M., PA
 Borzell, Francis Frank, PA
 Boudwin, Charles Bacon, PA
 Boyer, George Edgar, NJ
 Bradley, John Aloysius, PA
 Bricker, Howard Edgar, PA
 Briggs, Erwin Sheridan, PA
 Broadbelt, Leedom Richard, PA
 Broadfield, John Augustus, PA
 Brown, Arthur Aloysius, MA
 Brown, Walter Henry, PA
 Brundage, Robert Abner, PA
 Bryan, Wallace Steele, PA
 Bullock, Edwin Corlies, NJ
 Campbell, John Sheridan, PA
 Campbell, William Breaden, OH

Chapman, Ellis Jeakings, NJ
 Clement, Edward Buehler, NC
 Cogan, Richard Merwin, NJ
 Compton, John Milton, NJ
 Connole, John Francis, PA
 Cooke, Thomas Clarence, VA
 Cornwell, William Leslie, NJ
 Craig, Ford B., PA
 Cramp, Charles Edgar, PA
 Curtis, Grant Philleo, NJ
 Cutler, Franklin Earl, PA
 Cutter, William W., IL
 Davis, Addison Dimmitt, OH
 Davis, John Hall, PA
 Decker, Rudolph Frederick, IL
 Dixon, Edward F., IL
 Doherty, Harry Aloysius, NJ
 Dwyer, Frank Philip, PA
 Egly, Henry Conrad, PA
 Eisenhart, Harry Picking, PA
 Ellegood, Robert Edwin, DE
 Ellinger, Jacob Edgar, PA
 Engel, William Royal, OH
 English, Samuel B., NJ
 Evans, William P., PA
 Evans, William Allen, PA
 Evans, Clark, PA
 Farwell, Frank Pierce, PA
 Feldstein, George Julius, PA
 Ferguson, Thomas Reed, PA
 Fisher, Mulford Keene, PA

Flaherty, Michael Edward, PA
 Fleming, Henry Craig, PA
 Forney, Norman Nes, PA
 Frost, Henry Edward, MA
 Gable, Frank J., PA
 Gale, George Hays, OH
 Gaskill, Henry Kennedy, PA
 Godfrey, James H. Mines, NE
 Gonzales, Pablo Bonelli, PUERTO RICO
 Gordon, Samuel, PA
 Gorman, John Francis, PA
 Granelli, Michael Simon, NJ
 Guyot, J. DeVoine, MO
 Hance, Burtis Magie, NJ
 Hansel, George B., PA
 Harris, Robert Edward, GA
 Hempstead, Jacob, NJ
 Hill, George Wright, OR
 Hirsch, Henry Leon, MA
 Hoffman, Clarence, MD

Hopwood, George Black, PA
 Hopwood, William Hudson, PA
 Horwitz, Louis, PA
 Howard, LeRoy Downey, PA
 Huttenlock, Robert Edelman, PA
 Isenberg, Alfred Percy, PA
 Jackson, James Allen, GA
 Janblatte, Prince Nasib, SYRIA
 Jones, Edgar Clyde, OH
 Kean, Joseph Walter, NJ
 Keidel, Victor, TX
 Kinney, Willard Heil, PA
 Kitchen, Joseph Samuel, PA
 Klopp, Edward Jonathan, PA
 Knight, Alfred John, SD
 Koegel, William F. H., NJ
 Kraemer, William Henry, WV
 Lachner, Bernard Joseph, OR
 Lambie, John Sioussa, Jr., PA
 Lawson, Thomas Adam, PA



Fig. 169. Willard H. Kinney (JMC, '06), Clinical Professor of Urology (1930).

Fig. 170. Henry M. Minton (JMC, '06) specialized in treatment of tuberculosis and hospital administration.

Levitt, Michael Lewis, PA
Lewis, Fielding Otis, KY
Lore, Andrew Provost, NJ
Lownes, John Barton, PA
Mahoney, John Edwin, PA
Martin, Daniel Webster, PA
Maxwell, George Madison, NC
McCready, James Homer, PA
McCune, Samuel R. W., PA
McKea, Carlisle Emerson, PA
McKinley, Andrew Stuart, PA
McKnight, John Roy, PA
Meek, Grover Cleveland, KY
Miller, George William, Jr., PA
Miller, Edwin Barclay, PA
Miller, Leroy Bernhardt, PA
Minton, Henry McKee, PA
Mitchell, Edward Kirkwood, PA
Molumphy, David James, CT
Moss, Harry Joseph, PA
Murphy, Edward Joseph, PA
Muthart, Lewis James, PA
Nassau, Charles Francis, PA
Neiman, Howard George, PA
Niple, Dio Maine, PA
Novack, Harry Jacob, PA
Outerson, Andrew Mansergh, CT
Parker, John L., PA
Parks, Clarence Carson, PA
Patterson, Joseph Flanner, NC
Penrose, Thomas William, PA
Penton, Jose Luis, CUBA
Phillips, Eliot Earle, PA
Prichard, Karl Campbell, WV
Prichard, William Clarence, DE
Raymond, Walter Clemens, PA
Renn, Roy Herman, PA
Rich, Lorin Farr, ID
Richter, Henry Carl, IA
Robinson, Benjamin, PA
Robinson, Heber Edward, UT
Rochester, Alexander Sands, OH
Roller, William Calvin, PA
Rose, Abraham Hewitt, NC
Ryan, Adam W. T., OH
Saleeby, Ameen Mittry, SYRIA
Sariakusi, Ibrahim Mohammed, EGYPT
Schoening, John Jacob, PA
Scott, Buckner Fairfax, WV

Scott, William Rice, OR
Secor, William Lee, OH
Shaw, Walter Corson, PA
Shelley, Jay Warren, PA
Shepherd, Richard Cotton, PA
Sheppard, Charles Woodruff, PA
Shingle, John Delroy, WY
Shoemaker, George Elmer, NJ
Shoenthal, Harry Irvin, PA
Shorkley, Thornton Moore, PA
Sibley, Edward Rufus, NY
Simkins, Daniel, PA
Smith, Russell Abbott, PA
Smith, Max Truman, NE
Spear, Owen Crow, DE
Speight, Joseph Powell, NC
Spivak, Louis Joseph, PA
Stafford, James Frederick, IA
Stayer, Morrison Clay, PA
Steel, John Mattern, PA
Steiner, John Martin, PA
Stevens, Harry Eldredge, NJ
Strousse, Leo, PA
Swallow, Frank W., PA
Tankersley, James William, NC
Taylor, Paul James, VA
Templeton, Charles Love, OR
Thomas, George Carroll, PA
Thompson, Henry Merrill, PA
Topham, Bertram Everett, PA
Uhler, Stewart Mann, PA
Vick, George Davis, NC
Wagner, Frederick Miner, Jr., PA
Wagner, William Edgar, PA
Waldner, John Louis, SD
Walson, Charles Moore, DE
Wang, Charles William, PA
Wannamaker, Theodore Elliott, Jr., SC
Weakley, William Stair, PA
Weinstein, Morris Abraham, PA
Whitall, James Dawson, PA
White, Daniel William, PA
Widdowson, Frank Ridley, PA
Williams, Robert Lloyd, WI
Willoughby, Ralph Ray, OR
Wilson, Oscar Hermon, PA
Woodbury, Malcolm Sumner, NY
Young, John Simpson, NJ
Ziegler, Alfred Henry, PA

~ 1907 ~

In this year of 126 graduates, the major event was the opening on June 8 of what is now "Old Main" Hospital at Tenth and Sansom Streets (Fig. 171). Construction was started in 1903 but slowed by strikes and drawn-out attention to details. An impressive dedication ceremony was conducted by Board President, the Honorable William Potter, and enhanced by an inspired address by Dr. John Chalmers DaCosta, destined to be the first Samuel D. Gross endowed Professor in 1910. The building could vie with the best of any in the country. Eight stories tall, fire-proof with ground floor and basement built of steel, concrete, brick and terra cotta; floored with tile or other nonflammable material; supplied with natural light by three streets; containing interior electric lighting; steam heated from a central outside plant; cleaned by a vacuum system; and ventilated by a noiseless exhaust system, this state-of-the-art hospital provided more than 300 beds. It remains today as Jefferson's oldest building.

Michael Anthony Burns took an early interest in neurology which at that time included psychiatry under the heading of mental and nervous diseases (Fig. 172). In 1934 he was appointed Professor of Neurology to succeed Dr. Edward A. Strecker. As the work load in psychiatry greatly increased, Dr. Burns recommended the

creation of a separate Division, which led to the appointment in 1937 of Dr. Baldwin L. Keyes as Clinical Professor of Psychiatry in the Department of Neurology. Dr. Burns died suddenly in 1938 at the age of 54.

Arthur Julius Davidson was appointed Instructor of Orthopaedic Surgery in 1908 and thereafter until 1954 remained active in teaching in the orthopaedic clinic of this Department. He attained the rank of Associate Professor and was a recognized expert in the care of foot problems.

Harry Hunter Lott (Fig. 173) became an Assistant Professor of Laryngology at Jefferson and was highly regarded for his skill in tonsillectomy, which until the 1940s was performed almost as a routine.

Sidney Lessing Olsho won the prize in Otolaryngology and honorable mention in Pediatrics at graduation. He taught in the Ophthalmology Department of Jefferson for many years during which he advanced to the rank of Assistant Professor.

Benjamin Paul Weiss was awarded honorable mention for the Neurology prize at graduation. He served for many years in the Department of Mental and Nervous Diseases under Professors Dercum, Strecker, Burns and Alpers. His effective teaching led to his rise to Associate Professor of Neurology (Fig. 174).

CLASS OF 1907

Abbott, Frank Farnum, IL
Ard, George Potter, PA
Bachmann, Jean George, PA
Ballou, James Larkin, NC
Bennett, Wilford W., UT
Betts, William Williams, PA
Bitting, Numa Duncan, NC
Bliss, Gerald Douglas, NOVA SCOTIA
Blumberg, Nathan, PA
Bonelli, Victor Emmanuel, MS
Brice, Patrick Joseph, PA
Bright, James Cooper, RI

Brinson, Ed. Lane, GA
Burns, Michael Anthony, PA
Burwell, Thomas Spotuas, NC
Bushong, Frederick, PA
Chambers, William, PA
Chetwynd, Joseph Wallace, OH
Clapp, George Houghton, PA
Clark, James Cecil, UT
Cornely, J. Mossop, PA
Cox, Boaz Baxter, WV
Craig, William Clarke, NY
Crawford, James Joseph, MA

Davidson, Arthur Julius, PA
Dayton, Glenn Orville, OH
DeVore, Benjamin Franklin, OR
Dickinson, Charles Seymour, PA
Diers, Harry Edward, OH
Doster, Wade, KS
Eckhart, Godlove Grover, IN
Eulner, Elmer Harold, NJ
Everett, Shem Alfred, CT
Falk, Ralph, ID
Feild, Julian, OK

Fisher, Samuel Lloyd, PA
Follmer, George Elmer, PA
Foster, George Burgess, Jr., MA
Fox, George Timothy, MA
Gibson, George William, MA
Gillespy, Thurman, WV
Glenn, Nicholas Thomas, PA
Goldcamp, Stephen Wilfred, OH
Gonzalez, Jose, PUERTO RICO
Goodrich, Hubert John, NY
Gross, Benjamin, NY



Fig. 171. "Old Main" Hospital opened June 8, 1907.

Haines, Benjamin F., PA
 Hamilton, E. Wallace, PA
 Hoban, James John, MA
 Hobgood, James Edward, NC
 Hood, John Sidney, NC
 Howe, Jesse Burket, PA
 Hughes, Ephraim Georgia, UT
 Hyatt, Frederick Carlyle, NC
 Ives, Harold Augustus, FL
 Jett, Richard Lawrence, KY
 Johnson, John Huston, PA
 Johnston, William McDowell, PA
 Kinter, John Henry, PA
 Kocher, Jacob John, CA
 Kowaleski, Joseph S., PA
 Krebs, Adolph, PA
 Lacock, Lester Earle, PA
 Laufersweiler, Leonard Frank, OH
 Lott, Harry Hunter, PA
 Loveren, George Stillman, CA
 Mason, Willard M., NJ
 Mayerberg, Israel Wallace, NC
 McNerney, Aloysius Francis, PA

Meitzner, Max, PA
 Mercer, Clarence Mavel, MI
 Moore, Charles Edward, NC
 Moorman, Albert John, OH
 Morel, Henri Auguste, FRANCE
 Moulton, Percy Daniel, ME
 Nolan, Thomas Francis, PA
 Norris, Leonard Edward, RI
 Norton, Roy Roscoe, NJ
 Olsho, Sidney Lessing, PA
 Page, Arthur L., PA
 Page, Claude Weston, PA
 Patterson, Fred Lyle, PA
 Phelps, George Floyd, PA
 Poland, Joseph, PA
 Poole, Charles Henry, PA
 Powers, Marion Henderson, WV
 Randles, Herbert, KS
 Reed, James Craig, PA
 Reiff, Rankin, PA
 Ridge, Samuel LeRoy, PA
 Rifat, Mansur Mustafa, EGYPT
 Roddy, John A., Jr., PA



Fig. 172. Michael A. Burns (JMC, '07), Professor of Neurology (1934-38).

Fig. 173. Harry H. Lott (JMC, '07), Assistant Professor of Laryngology.

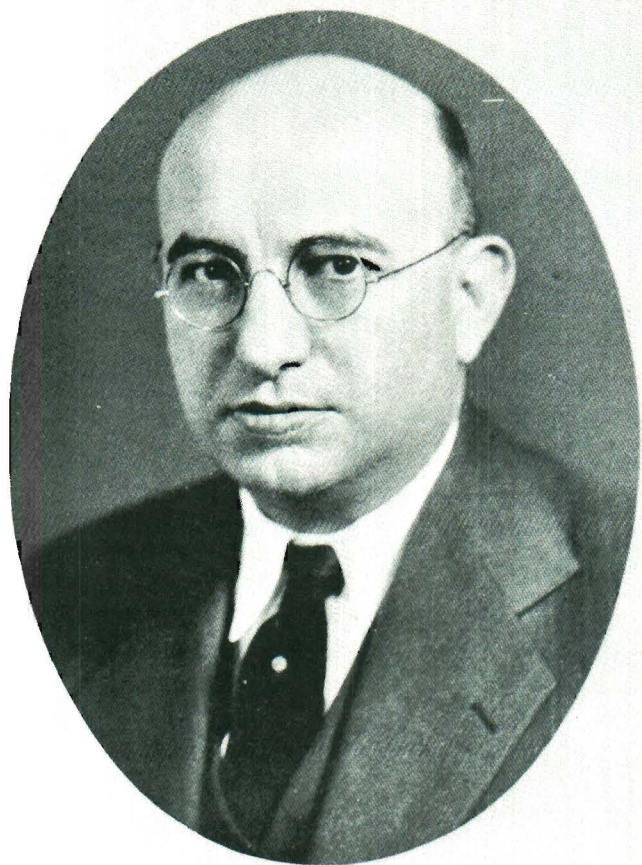


Fig. 174. Benjamin P. Weiss (JMC, '07), Associate Professor of Neurology.

Ross, John Kirkland, NC
 Ross, Daniel Curley, PA
 Rozelle, Carlos C., IA
 Russell, Joseph William, PA
 Samuels, Bernard, NY
 Sands, Charles Turner, PA
 Scholl, Henry Nathaniel, PA
 Schwartz, Morris R., PA
 Seabold, William Franklin, NY
 Seedenberg, Jesse Peightal, PA
 Shick, William Binder, PA
 Sloterbeck, Edgar Blackburn, PA
 Smith, Wilburn H., MI
 Smith, Paul Ruskin, DE
 Smith, James Melvin, PA
 Smith, Clarence Daniel, PA
 Sprague, Frank Marion, ID
 Strickler, Albert, PA
 Stuckert, Harry, PA
 Sweeney, Edward Joseph, MA
 Talley, Lewis Robert, TX
 Towler, Harold Hunt, PA
 Wanner, Harry Herbert, PA
 Wardle, Henry, MA
 Watkins, Fonso Butler, NC
 Weiss, Benjamin Paul, PA
 Weiss, Harry, PA
 Wells, Edgar Kennard, NJ
 Wentz, Paul Roop, PA
 Whiteside, Lindsay Cochrane, PA
 Wills, Leon Clifford, PA
 Wood, Rex, MO
 Yohannan, Malcolm, NY
 Zimmerman, Frank D., PA

The Jeffersonian

Editor-in-Chief

JAMES CRAIG REED, Pa., '07

General Business Manager

J. E. MACUSKER,

Address: Jefferson Medical College, Philadelphia

Associate Editors

LOUIS OTTO HEILAND, Pa., '08

EDWARD T. B. WEIDNER, Pa., '08

Athletic Editor

HARRY E. DIERS, Ohio, '07

Alumni Editor

Local Editor

Robert K. McConeghy, Pa., '08

The Jeffersonian, a Student publication between 1899 and 1916.

Advisory Board

CHARLES C. TOWNSEND, ESQ., for the Board of Trustees

PROF. W. M. L. COPLIN, for the Faculty

PROF. H. AUGUSTUS WILSON, for the Faculty

HENRY LINN BASSETT, A. B., M. D., for the Alumni

Published on the tenth of each month during the college year by James Craig Reed, Philadelphia.

All matters for insertion must be in not later than the twenty-fifth of each month.

Subscription, \$1 per year. Single copy, 15 cents.

Entered as second class matter at Philadelphia.

President William Potter awarded the M.D. degree to 170 graduates. The Commencement address was delivered by William H. Howell, Johns Hopkins Professor of Physiology and Dean.

Julius Blechschmidt, a native of Germany went on to post-graduate training in Pediatrics at Guy's Hospital, London, becoming a Licentiate of the Royal College of Physicians. He was appointed Chief Clinical Assistant in the Department for Diseases of Children at Jefferson and was also Assistant Pediatrician at the Philadelphia General Hospital while practicing pediatrics in Philadelphia for many years.

John W. Holmes also became associated with the Department for Diseases of Children at Jefferson and became a West Philadelphia pediatrician of note.

Patrick McCarthy became a respected member of the Jefferson surgical staff as well as an active Chief of Surgical service at the Philadelphia General Hospital and at St. Mary's Hospital.

Cheney M. Stimson, a native of Ohio, joined the Department of Obstetrics and Gynecology and for many years was Chief Clinical Assistant in the Gynecology Clinic.

Marshall C. Rumbaugh received honorable mention for several prizes at graduation and became a well-known physician and surgeon in Northeastern Pennsylvania as well as a leading Jefferson Alumnus. In 1952 he was President of the Alumni Association (Fig. 175).

Walter M. Bortz became a prominent internist and a leader in organized medicine in Western Pennsylvania. His son Donald W. Bortz was also a Jefferson Alumnus in the Class of 1939.

Perhaps the best known among the 1908 graduates was Elmer H. Funk. Dr. Funk's entire medical career related to Jefferson and to the Pennsylvania Hospital. Following internship he was appointed to the Department of Medicine and in 1912 Acting Medical Director of the Hospital. The same year, Dr. McCrae became Chairman of Medicine and a lifelong relationship began be-

tween these two master clinicians. Dr. Funk was made the first Medical Director (1913-26) of the new Department for Diseases of the Chest (Old Pine Street). His career broadened in Medicine and Therapeutics and he was recognized as an excellent teacher and writer (Fig. 176). On 1931 he succeeded Hobart A. Hare as Professor of Therapeutics and was President of the Alumni Association the same year. His death May 13, 1932 was a major loss. The Class of 1933 presented his portrait to the College.

Thurman D. Kitchin enhanced the prestige of Jefferson as his career broadened. After practicing medicine in his native North Carolina for



Fig. 175. Marshall C. Rumbaugh (JMC, '08), well respected general surgeon. President of the Alumni Association (1952).

nine years he was called to Wake Forest College as Professor of Physiology and Pharmacology in 1918. A year later he was made Dean of the Medical School and in 1930 President of Wake Forest College. He served the State of North Carolina in many capacities including membership on a Governor's Commission to revise the State Laws

and he was well known in state and national medical activities. In 1937 he was elected President of the Jefferson Medical College Alumni Association.

Wingate M. Johnson became Professor of Clinical Medicine in the Bowman Gray School of Medicine.

CLASS OF 1908

Adair, Templeton, VA
 Axtell, Earl, TX
 Bagshaw, David Evans, MI
 Baker, Norman Clyde, NH
 Baldwin, Herbert James, PA
 Barnett, George Watson, PA
 Basil, Aratoon, ARMENIA
 Bauscher, Abner Henry, PA
 Belisle, Albert Edward, NH
 Berry, John, NC
 Blechschmidt, Julius, GERMANY
 Bornstein, Max, WI
 Bortz, Walter Michael, PA
 Brown, Thaddeus Clair, PA
 Brown, Archie Lee, UT
 Brown, Henry Ross, PA
 Bugbee, Arthur Sharpe, CT
 Buka, Alfred Joseph, PA
 Burks, Floyd L.R., CA
 Calvert, Lewis Cass, MO
 Carington, Will John, MO
 Clark, Clarence Merrill, UT
 Clarke, Frederick George, UT
 Colbert, William F., Jr., PA
 Craig, Earl Burrell, PA
 Crandall, Charles Perry, RI
 DeLancey, William Wheelock, NY
 Dengler, Henry Paul, NJ
 Dougherty, James, PA
 Dwyer, Richard Joseph, CT
 Easley, Philip Samuel, NC
 Eister, William Howard, PA
 Evens, John Francis, OH
 Fallon, Joseph Francis, MA
 Feldman, Jacob Benjamin, NY
 Fernandez, Rafael, MEXICO
 Fortescue, Thomas Aloysius, PA
 Freeman, Robert Herman, NC
 Fritch, James Scott, PA
 Frosch, Frank Joseph, PA
 Funk, Elmer Hendricks, PA
 George, Charles Harney, MI
 Gilger, Ralph J., PA

Ginsburg, Samuel, PA
 Goldfeder, Charles B., PA
 Griesemer, Wellington David, PA
 Haagen, David Fisk, PA
 Hammond, Thomas Victor, Jr. DC
 Hanlon, Edward Francis, PA
 Hare, William Bathwell, OR
 Harris, Harry, PA
 Harris, Lorne Wilborne, MA
 Hartz, Harry Jacob, PA
 Heiland, Louis Otto, PA



Fig. 176. Elmer H. Funk (JMC, '08), first Medical Director of the Department for Diseases of the Chest and Professor of Therapeutics (1932).

Hemminger, Edward Franklin, PA
Herriott, Walter Hays, PA
Hewitt, Archie Edelen, OH
Hinkel, William Henry, PA
Holmberg, Carl Edward, MI
Holmes, John Williams, PA
Hull, Howard Lane, PA
Irby, Moreland R., VA
James, Richard Forrest, OR
James, William Daniel, NC
Johnson, Wingate Memory, NC
Jones, Adna Sawyer, NY
Kaufman, David, PA
Keely, Henry Edgar, PA
Kice, Luther Holden, NJ
Killips, Thomas Allen, NY
Kirk, Clair Bishop, PA
Kirkwood, Robert Carnahan, PA
Kitchin, Thurman Delna, NC
Klinzing, Henry, PA
Knoll, George Gustavus, PA
Koenig, Carl Eugene, OR
Kremens, Maxwell, PA
Krout, George Elmer, PA
Kurtz, Arthur D., PA
Lacy, Henry Clay, OR
LaGasa, James Andrew, WA
Larkin, Thomas Leo, PA
Laughrey, John Brooks, PA
Ledbetter, Penlie Briscoe, NC
Legg, Albert Neil, PA
Lenker, Robert Willis, PA
Leonard, Charles Forrest, PA
Lescher, Edwin R., IL
Levy, Jacob, PA
Leydic, Cyrus Clark, PA
Luhr, Augustine Charles, PA
MacMurdy, Carlyle Kedzie, NY
Marshall, John Peter, PA
McCarthy, Patrick Andrew, NJ
McConeghy, Robert Keating, PA
McGuire, William J., PA
McHugh, John Joseph, PA
McKee, Louis Edwin, PA
McMullin, Joseph J.A., PA
Meckstroth, Henry Louis, OH
Merrill, Horace, PA
Metzger, Carl Henry, PA
Millick, Howard Collins, PA
Montealegre, Edgar, COSTA RICA
Moore, Eugene Aloysius, PA
Morgan, David William, PA
Morse, Edwin W., OR
Moss, John T., TN

Murray, Thomas Elwin, MN
Myers, Edmund, MA
Nelson, Parley, UT
Nolan, John Thomas, PA
Orton, Henry Boylan, NJ
Patterson, John Gordon, OR
Pentecost, Milton Irving, PA
Perrault, Leo Thomas, NY
Phelan, Clause Aloysius, CA
Pherson, Frank James, NH
Phifer, Frank Marion, IL
Raken, William Elkin, PA
Rees, William Thomas, PA
Reid, James William, NC
Ricketts, George Allen, PA
Ritter, George Tilden, PA
Robinson, Alfred Andrew, UT
Roland, Marion Mansfield, OK
Rott, Otto Mathias, OH
Rumbaugh, Marshall C., PA
Rushton, Percy Hartley, RI
Russell, Thomas Hendrick, VA
Sager, Washington Budd, VA
Sayre, William Douglas, NJ
Schnorr, Alphonse Marie, PA
Schwartz, Bernard, PA
Seaton, Charles Forrest, PA
Seay, Samuel Cleveland, AL
Sells, Deshler F., WA
Shafer, Frederick William, NJ
Sherrick, Earl Cleveland, PA
Simonis, Arthur Elmer, PA
Sloop, Eustace Henry, NC
Smith, Thomas Harley, NC
Smith, John McNeill, NC
Soll, Charles Harold, CA
Stevens, John Alfred, PA
Stevenson, Frank Burton, MA
Stimson, Cheney Metcalf, OH
Streker, William Sylvester, RI
Susman, Michael, NJ
Swab, Robert Dubs, PA
Sweeney, Alvin Randolph, LA
Sweet, Paul Williams, KS
Sylvis, William Martin, PA
Timberlake, Richard E., NC
Tint, Jacob Louis, NY
Tomlinson, George Milton, PA
Upchurch, Robert Theodore, NC
Walker, Joseph, UT
Walters, Paul, Radcliffe, PA
Ward, Vernon Albert, NC
Warne, Joseph Lloyd, PA
Weidner, Edward Thomas B., PA

Weiland, Carl, Jr., PA
Wood, William Charles, PA
Wood, Clark S., AR
Woodside, Horatio Linn, PA

Wurtz, John George, PA
Yoder, Mahlon Harold, PA
Zech, Harry W., PA
Zelle, Oscar Lewis, IL



Surgical Dispensary (1908).

Harold L. Foss of Massachusetts was destined to become one of the leading surgeons of the United States (Fig. 177). Following graduation he was a pioneer physician in Candle, Alaska, then began formal training in surgery at the Mayo Clinic where he was elected the first president of the Mayo Alumni Association. The Mayo experience served as a model for his life-long career at the George F. Geisinger Memorial Hospital, Danville, Pennsylvania. He was Surgeon-in-Chief and Superintendent of Geisinger from its founding in 1915. He achieved renown as a skillful surgeon, able administrator, and teacher. He was President of the American College of

Surgeons in 1952/53. Under Dr. Foss' brilliant leadership, Geisinger Medical Center became influential in the medical progress of Central Pennsylvania with widespread ramifications. In 1988 an affiliation of Geisinger with Jefferson was consummated with increasing benefits to both institutions being realized. The surgical department at Geisinger bears the name of The Foss Clinic. Dr. Foss died in 1967.

Creighton H. Turner, following Jefferson internship, became a protege of Dr. James C. Wilson, Chairman of Medicine. For many years he was prominent in the teaching of physical diagnosis, going on to the rank of Associate Professor of Medicine. Dr. Turner was the physician for the Wilson family and was succeeded in this role by Dr. Robert I. Wise. Both cultivated the interest of Dr. Wilson's daughters in Jefferson so that ultimately a bequest from Miss Beatrice Wilson of \$1.5 million established the Wilson Professorship of Medicine. Dr. Turner was an able clinician and a respected mentor for a generation of Jefferson students (Fig. 178).

George F. Lull, Sr. pursued a varied career. Trained in pathology at Jefferson following graduation, he joined the United States Army Medical Corps in 1912 and served until 1946. His many appointments included Panama before World War I, and the Philippines as medical advisor to the Governor General in the 1920s. From 1940 he served in the office of the Surgeon General of the United States Army, ending as Deputy Surgeon General. In 1946 he was named Secretary-General Manager of the American Medical Association. Following retirement, posts with the Illinois State Medical Society, the Cook County Department of Public Aid, and the Chicago Medical Society rounded out his career. Dr. Lull acquired a doctorate of Public Health from the University of Pennsylvania. Decorations included the Distinguished Service Medal, the French Legion of Honor, and Cuba's Finlay Order of Merit.

Harry D. Podlasky of Wisconsin returned to



Fig. 177. Harold L. Foss (JMC '09), founding Surgeon-in-Chief of Geisinger Memorial Medical Center and President of the American College of Surgeons.

his native state and took up the new specialty of roentgenology. He joined the faculty of Marquette University School of Medicine and advanced to the rank of Associate Professor before his death in 1935.

At the Commencement on June 7 for 139 graduates, the Honorary Degree of Doctor of Laws

was conferred upon Colonel William Crawford Gorgas, M.D., Sc.D., who at the time was with the United States Army in Panama in connection with the construction of the Panama Canal. He delivered the address entitled *Sanitation in the Isthmus of Panama*.

CLASS OF 1909

Anderson, George A., UT
 Baker, Carroll Royer, DE
 Bakewell, Frank Smith, PA
 Banes, Charles Conrad A., PA
 Barker, Christopher Sylvanus, NC
 Barry, William David, PA
 Baxter, Milton Edwin, NJ
 Bednarkiewicz, Ignatius Aloysius, PA
 Betts, James Alfred, NJ
 Biscoe, Gibbs, AR
 Brady, Richard J., MN
 Brady, Philip J., MN
 Briody, Henry Edward, NJ
 Brown, Carl Guille, OH
 Brown, Maurice, PA
 Bull, Raymond Cooley, KS
 Burnside, Fred Rexford, OH
 Butcher, Charles, NJ
 Carter, William Stanley, PA
 Cates, Thomas Herndon, AR
 Cheatham, Thomas Alfred, GA
 Child, Howard Tennyson, NH
 Coleman, William James, MS
 Collester, Charles Chapman, IA
 Cowen, Brontz Luther, PA
 Cranmer, Richard Raymond, MN
 Davidson, Andrew Blaine, PA
 Davis, Thomas Carroll, PA
 Dick, Hugh Lenox H., PA
 Doherty, William John, NJ
 Douglas, William Elbert, DE
 Dray, Edward Joseph, CT
 Duvall, Frank C., PA
 Eggen, Olaf K., MN
 Elsinger, Lucious M., PA
 Fagan, Peter Edward, PA
 Faris, George Thomas, WV
 Farmer, Clarence Ravenel, NC
 Foss, Harold Leighton, MA
 Foster, Miles Everett, AR
 Frodey, Raymond J., PA
 Furlong, Robert Grant, PA
 Glasgow, Dan Fulkerso, PA

Glenn, Marshail Renfro, NC
 Goldman, Louis Charles, PA
 Goodison, William L.T., ND
 Gordner, Jesse Walter, PA
 Gray, Samuel Brown, PA
 Grimes, Charles Henry, PA
 Grow, Malcolm Cummings, PA
 Guier, Luis Javier, COSTA RICA
 Hall, Forest Frank, IA
 Hammer, Charles M., PA
 Henderlite, Aubrey Elgin, MT



Fig. 178. Creighton H. Turner (JMC, '09), Associate Professor of Medicine who taught physical diagnosis.

Hensyl, George Stanford, PA
Herbert, William Dey, NJ
Herman, Maxwell, PA
Hetherington, John, ND
Holcomb, Joel Theodore, MN
Hopkins, Frederick Miller, PA
Huber, Harry Jonas, PA
Hughes, Edgar Lee, OH
Irvan, Hardin Davenport, Jr., KY
Jackson, John Osborne, PA
Johnson, Harold Virgil, TX
Johnson, J. Thomas, IA
Jones, Harry Bradford, PA
Jordan, William Francis, AL
Keating, Charles Vincent, NY
Koplin, Nathaniel Hawthorne, PA
Kudlich, Manfred Heinrich, PA
Lambert, Henry Bertram, CT
Landry, Arthur Bernard, CT
Lau, Robert Edmund, PA
Leibold, Herbert Henry, MN
Lewis, Daniel W., TX
Leyda, Paul Leighton, CO
Loughran, James Joseph, PA
Lull, George Fairless, PA
Lyon, Richard Henry, MN
Lyons, James Chalmers, NOVA SCOTIA
Manahan, Charles Albert, IA
Marsh, Otto George, CA
McBride, James Fred, IL
McCain, Hugh White, NC
McConkey, Frank Vance, PA
McCord, James Robert, GA
Meddaugh, Fred W., PA
Miller, Hal Curtis, GA
Miller, John Charles, PA
Minford, Wilbur Henry, PA
Moss, Samuel, PA
Murphy, James F. M., MN
Orr, Adrian V., PA
Orton, George Lee, NJ
Park, Emory Robert, GA

Parmet, David Harris, PA
Pennington, George Powell, NJ
Pettigrew, James William, PA
Phillips, William Greaves, KY
Podlasky, Harry Bernard, WI
Reilly, Francis St. Clair, PA
Richardson, Waldo, WA
Rinehart, Stacy Herman, PA
Roberson, Foy, NC
Robinson, George H., PA
Rouse, William Isaac, PA
Royal, Benjamin Franklin, NC
Ruth, Edwin Z., PA
Schatz, Francis J., MN
Schilling, Francis Marion, PA
Schneyer, Julius, PA
Schonwald, John DeWitt, NC
Schramm, Francis M. B., PA
Seifriz, Alois Frank, NJ
Sender, Arthur Charles, PA
Shaffer, Phineas Jenks, PA
Shaw, John Harvey, PA
Sica, Leon Samuel, NJ
Silverstein, Nathan, PA
Smith, Etley Price, WV
Surles, Junius Boyette, NC
Thompson, Herbert Henry, MN
Throckmorton, Tom Bentley, IA
Tinker, Fay Waters, VT
Trigg, Ross Beckham, TX
Turner, Chauncey Carter, DE
Turner, Creighton Hooker, PA
Ulmer, David H. B., NJ
Vernon, James William, NC
Walker, Herman Hervey, PA
Wall, Russell Theodore, PA
Watkins, Benjamin M., PA
Weinberg, Charles Berenda, PA
Wilson, James Hamilton, PA
Withers, James Johnston, NC
Wohlwend, Fred, PA
Woodruff, James Lloyd, UT

The hardest conviction to get into the mind of a beginner is that the education upon which he is engaged is not a college course, not a medical course, but a life course, for which the work of a few years under teachers is but a preparation.

Sir William Osler (1849-1919)



Major General Malcolm Cummings Grow ('09) was appointed the first Surgeon General of the U.S. Air Force in 1949, at which time this branch had just become independent of the Army. For three years after his graduation from Jefferson he taught internal medicine and physical diagnosis in the clinic. During World War I he accepted a commission in the Russian Army (1915-17) as the Chief Surgeon attached to the First Siberian Army Corps. He then resigned to join the American Expeditionary forces to France. His awards and decorations included the U.S. Distinguished Service Medal; Legion of Merit and Bronze Star Medal; the Russian Cross of St. Stanislaus and Medal of St. George; the French Legion of Honor and Croix de Guerre; the Belgian Croix de Guerre; and Cross of Grand Officer in the order of the Crown of Italy.

General Grow pioneered in preventive medicine and developed protective equipment for airmen during his 21 years association with air forces. His research led to the development of the flak suit, electrically heated clothing and the combat ration.

At the June 6 Commencement, 141 graduates received their degrees and the degree of Doctor of Laws was conferred upon S. Weir Mitchell (JMC, 1850, Fig. 45). This recognized Dr. Mitchell's status as an elder statesman of American medicine and man of letters.

The Commencement also featured a eulogy of the late Professor Samuel D. Gross (1805-84) by Dr. W.W. Keen, Emeritus Professor of Surgery. The same year the Samuel D. Gross Professorship of Surgery (the first endowed Chair at Jefferson) was inaugurated with a \$60,000 gift by Gross' daughter, Maria Gross Horwitz. Dr. John Chalmers DaCosta was named the first incumbent.

The widely quoted Flexner report of 1910 in behalf of the Carnegie Foundation for the Advancement of Teaching resulted in endorsement of Jefferson Medical College relative to the quality of its medical teaching and clinical facilities. Jefferson at this time had the second largest enrollment of the nation's medical schools.

Reflecting the news this year from Germany of Ehrlich's discovery of "606" (Salvarsan), a therapeutic conference was held at Jefferson by Drs. Henry Leffman, Elmer H. Funk and Sidney L. Olsho for discussion of this first specific arsenical treatment for syphilis.

Warren B. Davis, a native of Kentucky and educated at the University of Kentucky, was elected to Alpha Omega Alpha and was awarded the Corinna Borden Keen Fellowship for foreign study. Upon return he was appointed to the Department of Surgery. After World War I service as Captain in charge of the School of Oral and Plastic Surgery at Fort Oglethorpe, Georgia, he was established as a subspecialist in plastic and reconstructive surgery. Dr. Davis was appointed Clinical Professor of Oral Surgery at Jefferson (1934) and was a founding member of the American Society of Plastic and Reconstructive Surgery in 1931, later its third president and editor of its journal. He was an innovative surgeon and

a loyal Jeffersonian, having been President of the Alumni Association in 1942 (Fig. 179).

James R. Martin (Fig. 180) was appointed to the Department of Orthopaedic Surgery in 1913, at the same time working as assistant to Dr. J. Torrance Rugh (JMC, 1892, Fig. 129), who in 1918 became Chairman of the Department. Dr. Martin remained in the Department until 1938, advancing to Assistant Professor and Chief of the Outpatient Clinic. In 1938 he was made Chief Surgeon of the State Hospital for Crippled Children at Elizabethtown, Pennsylvania, but a year later he returned to Jefferson as the James Edwards Professor of Orthopaedic Surgery, serving until 1950. From 1951 to 1956 he was Associate Dean



Fig. 179. Warren B. Davis (JMC, '10), Clinical Professor of Oral Surgery and pioneer in that field.

under Dean Bennett. The building at 11th and Walnut Streets (Southeast Corner), originally constructed as a student nurses' residence, bears

his name, and the site was formally occupied by the home of Samuel D. Gross. Dr. Martin's portrait was presented to the college in 1957.

CLASS OF 1910

Adams, Joseph Lowrance, NC
Alexander, Isaac, UT
Alexander, Robert Mackey, PA
Andrew, David, UT
Atkinson, Thomas Herman, PA
Austin, John Watson, NC
Ayres, Wilmot, PA
Baker, Elmer, PA
Beardsley, Wayne R., ND
Beck, Homer Henry, PA
Bevis, Earle Miami, WA
Bew, Richard, NJ
Billetdoux, Chester Augustus, PA
Bingaman, Charles E., PA
Bley, Robert Etris, Jr., IL
Boden, Todd R., PA
Brain, Charles Edward, UT
Broadman, Harry, PA
Brugman, Joseph Charles, IA
Brumbaugh, Simon Clarence, PA
Cain, William Jonathan, PA
Carney, Joseph Albert, PA
Carruth, Howard Ernest, KS
Conroy, John S., NJ
Craig, Samuel Halleck, NJ
Davis, Byron Gordon, NJ
Davis, Warren B., KY
Dickerson, Orval Melcher, IL
Donahue, John Leo, PA
Dunkelberg, Elmer Irl, IA
Eberle, Walter Gilbert, AR
Ely, Reuel Abram, PA
Ernst, M. Lincoln, PA
Evans, James Lawrence, NJ
Fielden, John S.C., Jr., MA
Figueroa, Siegfried, MEXICO
Fogerty, Clement Aloysius, PA
Forcey, Charles Budd, PA
Foss, Carl Elmer, ND
Fox, Samuel Watson, DE
Fulmer, Joseph Cleveland, PA
Furman, William Haywood, NC
Gaston, Cecil Dulin, AL
Gill, George Guyer, PA
Grahn, Samuel Norman, PA
Griffin, William Ray, NC
Grim, Herman Charles, PA

Grimm, Claude Emerson, WV
Gusman, Centeno Jesus, COSTA RICA
Haney, Josiah Rowan, Jr., MS
Happel, Horace E., TN
Harding, Benjamin Milton, NJ
Harnagel, Edward John, IA
Harvey, John, PA
High, Isaac Beidler, PA
Hightower, Charley Counce, MS
Hill, John Bostwick, Jr., SC
Hilly, Joseph Francis, PA
Holmes, Andrew Byron, NC
Howard, James Harold, NY
Howard, LeRoy Spangler, NY
Howells, Thomas J., UT
Hughes, Joseph, UT



Fig. 180. James R. Martin (JMC, '10), Chairman of Orthopaedic Surgery (1939-50).

Humphreys, John Charles, PA
Jackson, William Long, NY
Johnston, Russell Willhide, PA
Jones, John F.X., PA
Jones, Robert LeRoy, ME
Joss, Chester Earle, KS
Kauffman, Louis John, NJ
Keeffe, Patrick Eugene, NE
Keenan, Francis Edward, IA
Kramer, Edward Raymond, MN
LaFerte, Alfred Daniel, MI
Lea, Joseph Addison, TX
Livingston, Paul, PA
Lucas, Walter Scott, OH
Lukehart, Joseph Madison, PA
Lynch, Thomas James, MO
MacGaughey, James David, Jr., CT
Mack, Charles Beaver, PA
Mairs, Atlee, WV
Manion, James Lorne, OR
Martin, James Reid, PA
McBride, Thomas Sutch, PA
McCall, J. Harvey, IA
McCarten, Robert Emmett, MN
McConihay, Clarence William, WV
McDowell, James Edward, DE
McKay, Hamilton W., SC
McKellar, Harry Rex, GA
Mellor, John Oliver, UT
Mendelsohn, David Henry, CT
Merscher, Harry Leonard, PA
Miley, Weir Mitchell, IN
Miller, Thomas Benton, PA
Montague, Samuel Spurgeon, NC
Montgomery, Daniel Cameron, MS
Moore, William Houston, NC
Moriarty, Charles Albert, MA
Musser, Guy Musselman, PA
Newbold, William Augustus, NJ

Nothnagel, Frank Richard, NJ
Orndoff, Hersey Elroy, PA
Pershing, Paul Frederick, PA
Pilchard, Sewell Norris, DE
Pittman, Raymond Lupton, NC
Potter, Walter Hubert, RI
Pratt, Robert Boyd, OH
Prigger, Edward Reuben, NJ
Rhoads, Alfred Lawrence, PA
Rice, Wilkie Benjamin, OH
Rich, Samuel, OH
Ricketts, John G., PA
Rosenfeld, David Hiram, PA
Rosenthal, Joseph Morris, PA
Sass, Franklin Edgar, PA
Schrader, Herman Frederick, MN
Scudder, John Henry H., CA
Shepherd, Warren, UT
Shepler, Norman Bruce, PA
Shinaberry, Rollen Lemuel, OH
Siegel, Alvin Erdreich, AL
Simpson, Fred Pratt, PA
Smukler, Maximilian Edward, PA
Southwick, Harry Holmes, IL
Sprinkle, Charles Nichols, NC
Stoney, George Franklin, OH
Strauss, Abraham, PA
Stucke, Edmund Conrad, MN
Sumner, Thomas Woodfin, NC
Thomas, Charles Meade, PA
Thompson, Thomas Gotfried, SD
Treat, Albert Miller, MN
Wallace, Charles Chester, PA
Walter, Charles Arthur, PA
Wayland, Clyde, CA
Webb, Louis Harward, NC
Wolf, Frank Aloysius, PA
Wood, Chester Cameron, PA
Zahn, Samuel Finley, NJ

The successful teacher is no longer on a height, pumping knowledge at high pressure into passive receptacles. . . . he is a senior student anxious to help his juniors.

Sir William Osler (1849-1919).

At the Commencement, held June 5, the degree of Doctor of Medicine was conferred upon 117 graduates, and the honorary degree of Doctor of Science was awarded in absentia to Victor George Heiser (JMC, 1897, Fig. 141) an international pioneer in the field of public health.

The Alumni prize for highest average of the four years was won by Thomas Aloysius Shallow (Fig. 181). He became the protege and personal assistant of John Chalmers DaCosta (JMC, 1885, Fig. 113) and was made a full Professor of Surgery upon the latter's death in 1933. He was named the second Gross Professor of surgery in

1939. Shallow belonged to many societies and served as President of the Alumni Association (1938) and of the Philadelphia Academy of Surgery (1943). He pioneered in the one-stage operation for correction of pharyngeal diverticulum and excelled in gastro-intestinal surgery. His portrait was presented to the College by the class of 1950.

Edward Adam Strecker became an outstanding psychiatrist (Fig. 182). After serving as Professor of Mental and Nervous Diseases at Jefferson from 1925 to 1931, he assumed the same post in the University of Pennsylvania. He was a



Fig. 181. Thomas A. Shallow (JMC, '11) second Gross Professor of Surgery (1939-55).



Fig. 182. Edward A. Strecker (JMC, '11), Professor of Mental and Nervous Diseases (1925-31).

scholar, brilliant teacher and skilled physician who received the honorary degrees of Sc.D, Litt. D. and LL.D. He authored many books and papers and pioneered in the treatment of alcoholism.

John DeCarlo maintained a life-long interest in anatomy and taught the course in Applied and Topical Anatomy in the Daniel Baugh Institute for many years.

The Daniel Baugh Institute of Anatomy was opened in 1911 (Fig. 183). Located at Eleventh and Clinton Streets, the building was formerly the Pennsylvania Dental College. Mr. Daniel

Baugh, although never President, served on the Board of Trustees for 25 years (1896-1921). Board President William Potter characterized him as "the most valuable man ever connected with the Board." The Institute placed Jefferson's Anatomy Department in the forefront of all medical schools in the country. The Chairman's title was changed to "Professor of Anatomy, Head of the Department of Anatomy, and Director of the Daniel Baugh Institute". The Institute eventually moved to Jefferson Alumni Hall in 1968. Mr. Baugh also donated an electrically driven ambulance to the hospital (Fig. 184).

CLASS OF 1911

Aichele, Otto Walter, PA
 Alleman, George E., PA
 Allison, George Kelly, PA
 Allison, Harry Weamer, PA
 Annealey, William Honeyford, PA
 Arnold, John Loy, PA
 Becker, Thomas Henry, WV
 Berney, Daniel Edward, PA
 Borrowes, George Henry, PA
 Bowen, Charles John, PA
 Boyer, Charles George, PA
 Boyer, Edwin Charles, PA
 Brinton, William Thomas, IA
 Brockway, Charles Jesse, IN
 Brown, Walter Earl, PA
 Burkartmaier, John Henry, PA
 Burke, Charles Perry, PA
 Carbonell, Frank Arturo, PUERTO RICO
 Carmelia, Francis Albion, PA
 Carmichael, Daniel Lafayette, Jr., WA
 Carmichael, Asa Bartholow, WA
 Cary, Dale Emerson, PA
 Coleman, Austin Hoffman, NJ
 Collier, Martin H., PA
 Cribbins, Frederick Allen, MI
 Croop, James Elmer, PA
 Cummings, Michael Penn, NC
 Davies, Emlyn Thomas, PA
 Dean, Alfred, ND
 DeCarlo, John, PA
 Dickson, George Blazier, PA
 Donohue, John Joseph, PA
 Dougherty, William Otto, PA
 Dowds, Samuel Clarke, PA
 Dudenhofer, Joseph Edward, PA
 Ellenberger, Jacob W. E., PA

Elliot, Francis Theodore, PA
 Ewing, Leslie Hand, NJ
 Feddeman, Charles Edward, VA
 Feigley, Harvey P., PA
 Flanagan, Edward Joseph, PA
 Frankenburger, W. Sturgis, PA
 Frigge, Edward Henry, IN



Fig. 183. Daniel Baugh Institute of Anatomy opened in 1911.

Funk, Erwin Deaterly, PA
 Geiger, Hugh St. Clare, FL
 Gilmore, John Wesley, WV
 Gross, Samuel, PA
 Hagood, Rufus Hansom, Jr., AL
 Halpern, Harry Samuel, Jr., PA
 Hamme, Curtis J., PA
 Harrigan, William Francis, ME
 Harris, Benjamin Franklin, PA
 Hastings, Lorne Edward, CANADA
 Holt, Lloyd Mott, PA
 Hubbard, Lex Walter, MS
 Hustead, Frank Humbert, PA
 Hynson, Garrett Lee, OR
 Jacobs, Leopold, Max, CT
 James, Charles Emera, DE
 Johnson, Lee, NC
 Jones, William Gwilym, PA
 Keim, Ivan N., PA
 Klein, Arno, IN
 Klenk, James Monroe, PA
 LaRochelle, Fred Desire, VT
 Leh, Homer Deems, PA
 Lovett, Joseph Cook, WA
 Ludwig, David Boyd, PA
 McConaghy, Edward James, NJ
 McGinnis, George Edward, PA
 McHugh, Patrick Francis, PA

McNamara, Frank Wallace, PA
 Mierau, Ernest W., NJ
 Moore, Edward Lane, GA
 Moss, Morris Israel, PA
 Mulford, Leslie Frank, NJ
 Muschlitz, Frederick Allen, PA
 Neilson, Clarence Jamie, UT
 Oelschlegel, Herbert Charles, CT
 Paul, James Hale, PA
 Person, William Cortlandt, PA
 Phillips, Edward Milliken, PA
 Posey, Silas Robert, PA
 Quinn, Sidney Augustus, PA
 Reimer, Charles James, Jr., PA
 Richman, Kenneth Charles, PA
 Russell, Evans Dounton, PA
 Ryan, William Francis, VT
 Schneider, George Louis, PA
 Shaffer, George Emery, PA
 Shallow, Thomas Aloysius, PA
 Shannon, Francis Patrick, PA
 Shaw, William Alger, NC
 Shelley, Penrose Herr, PA
 Simmons, Howard Jackson, IA
 Smith, Augustus Edwin, PA
 Smith, Bernard Reid, NC
 Smith, Karl Waller, PA
 Smithwick, James Milton, GA
 Snyder, Jacob F. M., PA
 Soltz, Thomas, CT
 Sosnowski, John Joseph, Jr., PA
 Sowden, Edgar Lentz, PA
 Steele, Willard H., TN
 Strecker, Edward Adam, PA
 Sweeney, Joseph John, OH
 Thomas, Samuel B., PA
 Toland, William Arthur, PA
 Trumper, Abraham, PA
 Wadsworth, William Houston, NC
 Walsh, James Joseph, PA
 Warnock, George Carl, PA
 White, Peter Cope, PA
 Whittle, Charlton Cash, GA
 Wisheart, Eric Edmund, PA
 Wojczynski, Leon Joseph, PA
 Wolfe, R. Vincent, PA



Fig. 184. Electric driven ambulance replacing horse-drawn one (ca. 1911).

On June 3, in the Academy of Music, the M.D. degree was conferred upon 148 graduates by the President, Mr. William Potter. Dr. Thomas McCrae, the new Chairman of the Department of Medicine, recently appointed from Johns Hopkins University School of Medicine, gave the address on *Postgraduate Education*. The honorary degree of Doctor of Science was conferred upon William W. Keen (JMC, 1862, Emeritus Professor of Surgery, Fig. 67) and James W. Holland (JMC, 1868, Emeritus Professor of Chemistry, Fig. 78). The honorary degree of Doctor of Laws was conferred upon Jacob Solis-Cohen (Honorary Professor of Laryngology). The honorary degree of Doctor of Public Health was conferred upon Joseph S. Neff (JMC, 1875, Fig. 88), Director of Public Health and Charities of Philadelphia, and Medical Director of Jefferson Hospital from 1895 to 1907.

Among the outstanding members of this class, no one exceeded the distinction of Louis Henry Clerf, a native of the State of Washington (Fig. 185). He trained at Jefferson as Instructor in Bronchoesophagoscopy under the great pioneer, Dr. Chevalier Jackson, and at the latter's retirement in 1930 was appointed Chairman of Bronchology and Esophagology, and additionally served as Chairman of Laryngology from 1936 until he retired in 1954. He contributed over 200 papers to the literature, gave talks in all the 48 States of the country at the time, and belonged to a host of medical organizations. He served as President of the Philadelphia County Medical Society, American Broncho-Esophageal Association, Philadelphia Laryngological Society, Triological Society and the New York Laryngological Society. Villanova University awarded him the LL.D. degree, St. Martin's College the Sc.D., and Jefferson the L.H.D. He became President of the Alumni Association, reorganized the Alumni Giving Campaign, and headed the Alumni contributions to the Foerderer Pavilion. His portrait was presented to the College (Class of 1954) and he was the first recipient of the Alumni Achieve-

ment Award (1964). Considered a member of that elite group known as "Mr. Jefferson," his loyalty continued until his death in 1989 at the age of 100.

Leon Solis-Cohen was the son of Jacob Solis-Cohen and nephew of Solomon Solis-Cohen, both outstanding members of the Jefferson Faculty. In 1920 he pioneered in radiology at Jefferson along with Dr. Willis F. Manges. He was a founding member of the "X Society" at Jefferson during the 1920s, an intimate social/scientific group that is flourishing to the present time.

Robert McDowell Lukens became an Assistant Professor of Bronchoscopy and Esophagoscopy at Jefferson and was also gifted as an artist (Fig. 186). He painted portraits of James Aitken Meigs,



Fig. 185. Louis H. Clerf (JMC, '12), second Chairman of Bronchoesophagology (1930-54) and fourth Chairman of Laryngology (1936-54).

Randle C. Rosenberger and Chevalier Jackson which are displayed in Jefferson's art collection.

Benjamin Lipshutz was the first faculty appointee at Jefferson to be identified with neuroanatomy by title as Assistant Demonstrator of Neuroanatomy in 1917. He conducted the laboratories from 1932 until 1948, when he retired at the Associate Professorial level. He was also on the surgical staff of the Hospital, in which his knowledge of anatomy served him well as a most skilled operator (Fig. 187).

Henry Keller Mohler graduated as an honor student. He became Medical Director of the Hospital from 1914 to 1938 and then succeeded Ross V. Patterson as Dean of the Medical College in 1938. He was active in cardiology and was made Professor of Therapeutics in 1938 (Fig. 188). He was prominent in many local and national societies. LaSalle College awarded him an honor-

ary degree of Doctor of Science in 1939 and the Class of 1940 presented his portrait to the College. He died suddenly in 1941.

Roscoe L. Wall, having concluded his long career as Professor of Anesthesiology at Bowman-Gray School of Medicine, Wake Forest College in Winston-Salem, North Carolina, died in 1980 at the age of 90 years.

Following his arrival at Jefferson in June, 1912, Thomas McCrae, the new Professor of Medicine, quickly established a solid position with students and colleagues (Fig. 189). Dr. McCrae, trainee and associate of Dr. William Osler at Johns Hopkins, provided new insights in a broadening area of medical science and practice. He joined and later succeeded Osler in revisions of the classic *Principles and Practice of Medicine*, the standard textbook for a generation of American medical students.



Fig. 186. Robert M. Lukens (JMC, '12), Assistant Professor of Bronchoesophagology, also an artist and musician.



Fig. 187. Benjamin Lipshutz (JMC '12), skilled general surgeon who taught neuroanatomy (1917-48).

Aaronoff, Joseph, PA
 Adams, Rayford Kennedy, NC
 Anthony, Walter E., IA
 Austin, Henry Exum, NC
 Barder, Joseph John, PA
 Barr, Austin Flint, AR
 Barry, Rolla Grant, NJ
 Bassow, Carl Frederick, OH
 Baumgarten, Roy Chester, IA
 Beam, Russell S., NC
 Beck, Henry Allan, OH
 Bertram, Albert Joseph, CT
 Boord, Paul C., PA
 Boring, Harold Bruce, PA
 Brady, Reginald Morton, AUSTRALIA
 Brady, Walter Charles, PA
 Brant, Albion Earl, OH
 Brindley, Arthur A., OH
 Brown, Benjamin, PA
 Burns, Thomas Francis, MA
 Cannady, Nicholas Boddie, NC
 Carroll, James Basil, PA
 Childers, Robert Jefferson, TN
 Ciavarelli, Constantino Nicola, ITALY
 Clerf Louis H., WA
 Conn, Harold Russell, IA
 Connole, Joseph Vincent, PA
 Cooley, Elas Earle, SC
 Cox, Seth Leroy, KS
 Craig, Alexander, IL
 Cunningham, Jacob Metz, PA
 Denny, Thomas Collins, IA
 Dinnison, James Andrew, PA
 Douress, Philip Charles, NJ
 Doyle, William Joseph, PA
 Ensminger, Samuel Hyson, PA
 Esposito, Joseph Vincent, CT
 Fanz, John Ignatius, PA
 Fenton, Ivor David, PA
 Flannery, Leo Gerald, PA
 Fralinger, John Joseph, PA
 Fulton, William V., WA
 Garris, Frank Henry, NC
 Gary, Arthur Dare, NJ
 Gaston, Perry Stevenson, PA
 Gordon, Abraham James, PA
 Greenman, Ernest Nelson, IL
 Grigg, Adrian Hansford, WV
 Haines, William Henry, NJ
 Hammett, Lea Jackson, SC
 Hanson, Wayne Pierre, WY
 Hardee, Walter Person, NC

Harris, Thomas Lewis, WV
 Hartman, Morris D., TN
 Hartsell, Joe Albert, NC
 Henderson, David Williams, ID
 Henderson, Frederick Arthur, IN
 Holtz, Kenneth Jastram, NE
 Hornick, Leo William, PA
 Hughes, Herman Clyde, PA
 Hunt, Daniel, MS
 Jeffrey, Robert Harrison, PA
 Jenson, James Lloyd, KS
 Jones, John Paul, NC
 Jones, Edward Hallaran, TX
 Kain, Thomas Michael, NJ
 Kaufmann, Samuel Benjamin, MA
 Kealing, Otho Granville, IN
 Keenan, Andrew Joseph, Jr., PA
 Kirkwood, Tom, IL
 Kline, Harvey Winfield, PA



Fig. 188. Henry K. Mohler (JMC, '12), cardiologist, Medical Director (1914-38) and Dean (1938-41).

Kramer, David, PA
 Kraus, Gabriel Joseph, PA
 Laferty, John Marshall, PA
 Larkin, Edmund Peter, PA
 Lashman, William Mitchel, NJ
 Laverty, George Lauman, PA
 Lipshutz, Benjamin, PA
 Longo, James Augustus, PA
 Lowe, David Earl, PA
 Lukens, Robert McDowell, PA
 Lytle, Ralph McKay, PA
 Mann, Abraham Leon, PA
 Mann, I. Thurman, NC
 Manning, Harrison Martin, DE
 Matta, Quinones Enrique, PUERTO RICO
 Mauser, Roscoe Frederick, NC
 Mayer, Willard, NE
 McClellan, Wallace Roy, PA
 Metz, Samuel Franklin, PA
 Middlebrook, Robert, Jr., MO
 Miltenberger, Arthur, PA
 Mingos, Jay DePue, PA
 Mitchell, Horace Erwin, IN
 Mohler, Henry Keller, PA

Morian, Clarence Herbert, PA
 Mullen, Thomas Francis, IL
 Mullin, Charles Elmer, PA
 Niebel, Benjamin Earl, PA
 Nolan, Michael McCormack, AL
 Pennington James F., KY
 Poffenberger, Joseph Cummings, PA
 Potts, Morris Leroy, NJ
 Rankin, Samuel Wharton, NC
 Robinson, Leigh Fowler, IN
 Rose, Samuel J., KY
 Ross, Hendric Arnold, AR
 Rubenstone, Abraham Isadore, PA
 Russell, Scott S., PA
 Ryan, Charles Calvin, PA
 Sanabria, Nicholas, PUERTO RICO
 Schmitz, Henry Charles, IL
 Sellmeyer, Bernardo Leo, MO
 Shapiro, Morris Samuel, PA
 Sheppard, Robert Lester, PA
 Shields James M., IA
 Smith, Edward Michael, NY
 Smith, Lawrence Jackson, NC
 Snyder, Claude Edwin, PA

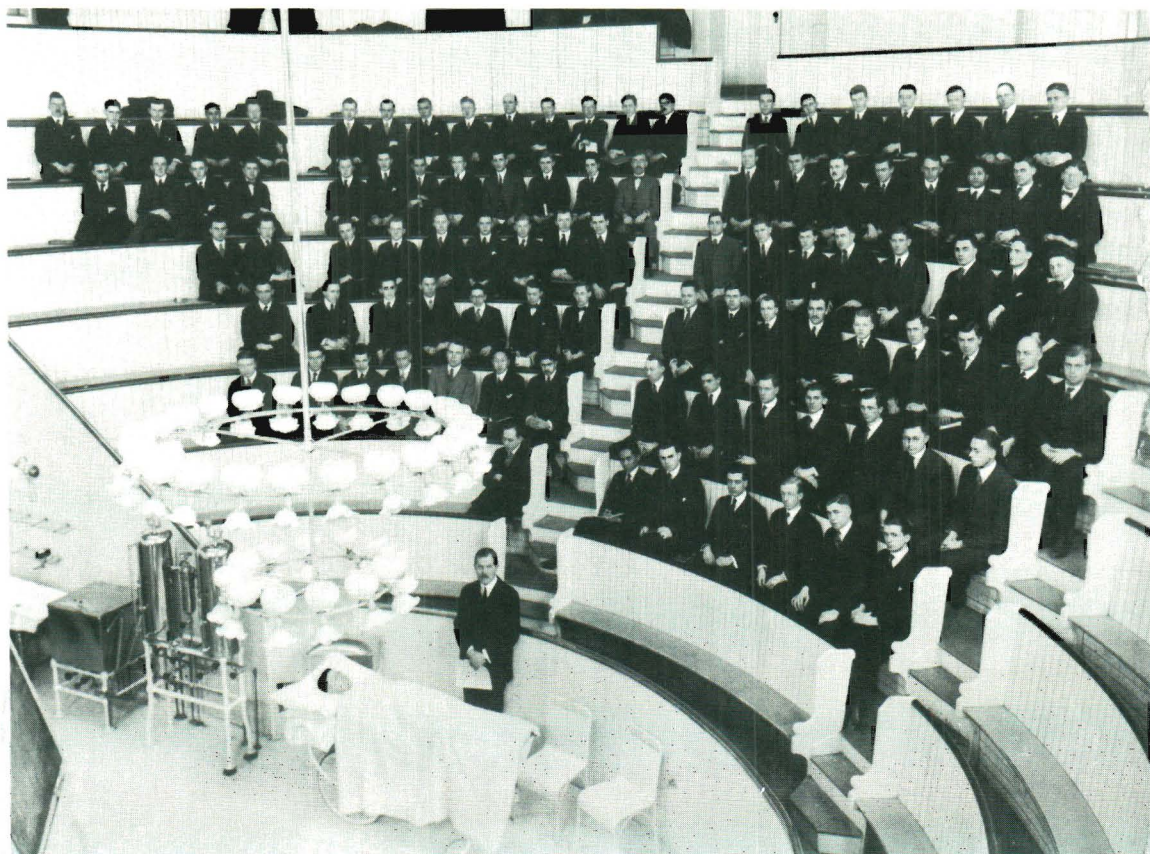


Fig. 189. Thomas McCrae in "pit" of 1877 Hospital.

Solis-Cohen, Leon, PA
Speer, William Louis, KS
St. Clair, James Roy, PA
Stephan, George Louis, PA
Streit, Ernest Hamilton, OR
Strimple, James Thurman, PA
Sullivan, Arthur James J., MA
Thomas, Llewelyn Ivor, PA
Tomlinson, Robert Williams, DE
Tunnell, Monroe Hinson, PA
Turnbull, Frederick C., NEW ZEALAND
Udinsky, Hyman Joseph, NJ
VanDuzer, William Roy, IA
VanGilder, James Emmett, PA

VanNess, Herbert Roy, NJ
Veal, William Thomas, RI
Vosburg, Harry Arthur, Jr., PA
Walker, Duncan Devane, NC
Wall, Roscoe LeGrand, NC
Wall, Joseph Amplias, KY
Waters, William Watkin, PA
West, Louis N., NC
Wilkinson, Albert Harrison, PA
Williams, Horace James, DE
Workman, William M., PA
Wrenn, Frank, NC
Ziegelman, Edward Frank, CA
Zimmerman, Edward L., KS
Zuck, Arthur C., PA



Horace J. Williams (JMC, '12), Chairman of Otol-
ogy (1937-50), highly regarded for mastoid surgery.

In July, 1913, an act was passed by the State legislature requiring that candidates for licensure serve a year's internship in an accredited hospital. This represented another step in the increasing complexity of medical education and practice.

The year was also marked by plans for the Department for Diseases of the Chest at 236-238 Pine Street, a facility intended to contribute teaching material for physical diagnosis and clinical medicine as well as to forward the treatment and control of tuberculosis (Fig. 190). Dr. Elmer H. Funk was named Medical Director. Also, improvements were announced in the Daniel Baugh Institute permitting simultaneous accommodation of up to 360 students.

In this year a "Medical Preparatory Course"

was started. It was a one-year liberal arts course which gave college credit in German or French, Chemistry, Physics and Biology. It started on September 24, 1913, so that students planning to matriculate at Jefferson in 1914 could fulfill the new requirement for admission of one year of college credit. This course was discontinued after three years (through the 1915/1916 session).

The Commencement exercises were again held at the Academy of Music on June 7. The degree of Doctor of Medicine was conferred on 126 graduates by Board President, the Honorable William Potter. The Address by Francis P. Venable, Ph.D., D.Sc., LL.D., President of the University of North Carolina, was titled "The Graduate of Jefferson Medical College and His Obligations".

John B. Flick, of Pennsylvania, may be re-



Fig. 190. Men's ward in Pine street Department for Diseases of the Chest.

garded as Jefferson's first thoracic surgeon, and is credited with the concerted effort to develop a separate Division within the Department of Surgery. He performed the first thoracoplasty at Jefferson for tuberculosis in 1924. In the following decade he wrote extensively of techniques for treatment of lung abscess, tuberculosis and bronchiectasis. He performed the first successful pneumonectomy in Philadelphia in 1933, soon after Dr. Evarts A. Graham earlier the same year reported the first in the world. He rose through

the ranks to Clinical Professor in which position he served from 1937 to 1946 (Fig. 191).

Francis Elwood Weatherby became a career military physician and was also trained in neuropsychiatry. In 1931 he returned to Jefferson as Professor of Military Science and Tactics with the rank of Major (Fig. 192).

John Elias Livingood kept an active interest in Alumni affairs of his alma mater and served as the President in 1957 (Fig. 193).

CLASS OF 1913

Allebach, Newton G., PA
 Allen, Robert Louis, PA
 Alt, Roy Colony, IA
 Arnold, Herbert Leonard, MS
 Ballinger, Reeve Leslie, NJ
 Beck, Albert Fillmore, PA

Beebe, Richard Clarence, DE
 Bibb, Clyde James, KY
 Bliss, Raymond VanNess, VT
 Bonnell, Frank Sumner, IA
 Branon, Anthony William, VT
 Brown, Harold Morris, CT
 Buchanan, Luther Thomas, NC
 Buckner, Hubbard Thomas, KY
 Campbell, Guy Gibson, PA
 Cocke, Eugene Rankin, NC
 Colby, Cleon W., VT
 Coles, James Garfield, PA
 Cope, Roscoe Ziegler, PA
 Coward, Edwin H., PA
 Cressler, John Webster, PA
 Cruice, Lemman Dow, MI
 Dapp, Gustave Adolph, PA
 Davies, John Rumsey, Jr., PA
 Davis, Bonaparte, KY
 Degnan, Edward Joseph, CT
 Dickinson, James John, MO
 Doran, Benjamin Perkins, PA
 Downs, Roscius Irving, NY
 Dry, David Miller, PA
 Dunham, Horace Garfield, NJ
 Figley, Karl Dean, OH
 Fisher, J. Harrison, PA
 Flick, John B. L., PA
 Freed, Frederick Clarence, TN
 Gabrio, Max Reynold, PA
 Garber, James Rhodes, AL
 Gardner, Clarence Snow, UT
 Garrison, Walter Sherman, NJ
 Gibson, Burgess Allen, PA
 Goddard, Alonzo Irie, KS
 Gonzalez, Rosario Hiram, PUERTO RICO
 Gottschall, Amos Wilson, PA
 Greenbaum, Sigmund S., PA



Fig. 191. John B. Flick (JMC, '13), Clinical Professor of Surgery and pioneer in thoracic surgery.

Grove, William Edward, PA
 Haas, Thurman Bishop, OH
 Hartzell, Leo Henry, OH
 Haskett, Paul Edmund, OK
 Haywood, Guy Tainter, MT
 Hazlett, Almon Cyrus, PA
 Heady, Carlton Kellogg, CT
 Heist, George David, PA
 Heuler, Leo, PA
 Hurff, J. Wallace, NJ
 Inkrote, Warren Webster, PA
 Jacobson, Nathan Barnet, NY
 Johnston, Warren Herbert, PA
 Kaplan, Eliah, PA
 Keith, Elvin W., PA
 Kessler, William Coward, PA
 King, Brinsfield, LA
 Kinnaird, Virgil Gibney, KY
 Klingensmith, William Roger, AR
 Kramer, Daniel William, PA
 Krauss, Walter Raymond, PA
 Livingood, John Elias, PA
 Lowell, Francis Carroll, PA
 Lowell, Paul, PA

Lummis, Frederick Rice, TX
 Macfarlane, Menzies J., UT
 Marshall, William Virden, DE
 Mauger, Lee Fillmen, PA
 Mayer, Louis Henry, Jr., PA
 McLain, John Hillman, MS
 McLelland, William Davies, NC
 McNelis, Thomas, PA
 Miller, Richard Hagan, RI
 Moore, Carl Sinclair, OR
 Moore, Harry Beaumont, OR
 Murphy, Joseph T., PA
 O'Brien, Theo Wallace, MD
 O'Hara, Warren Thomas, PA
 Palmer, Robert Maffet, PA
 Quinn, Norman James, NJ
 Rarig, Howard Raymond, PA
 Rhea, Edwin Bruce, TN
 Richards, Robert Wayne, PA
 Richardson, Cleves, KY
 Roberts, Nathaniel Embury, OR
 Robinhold, Adam Miller, PA
 Rodgers, William Daniel, Jr., NC
 Rose, Clarence Atwood, NOVA SCOTIA



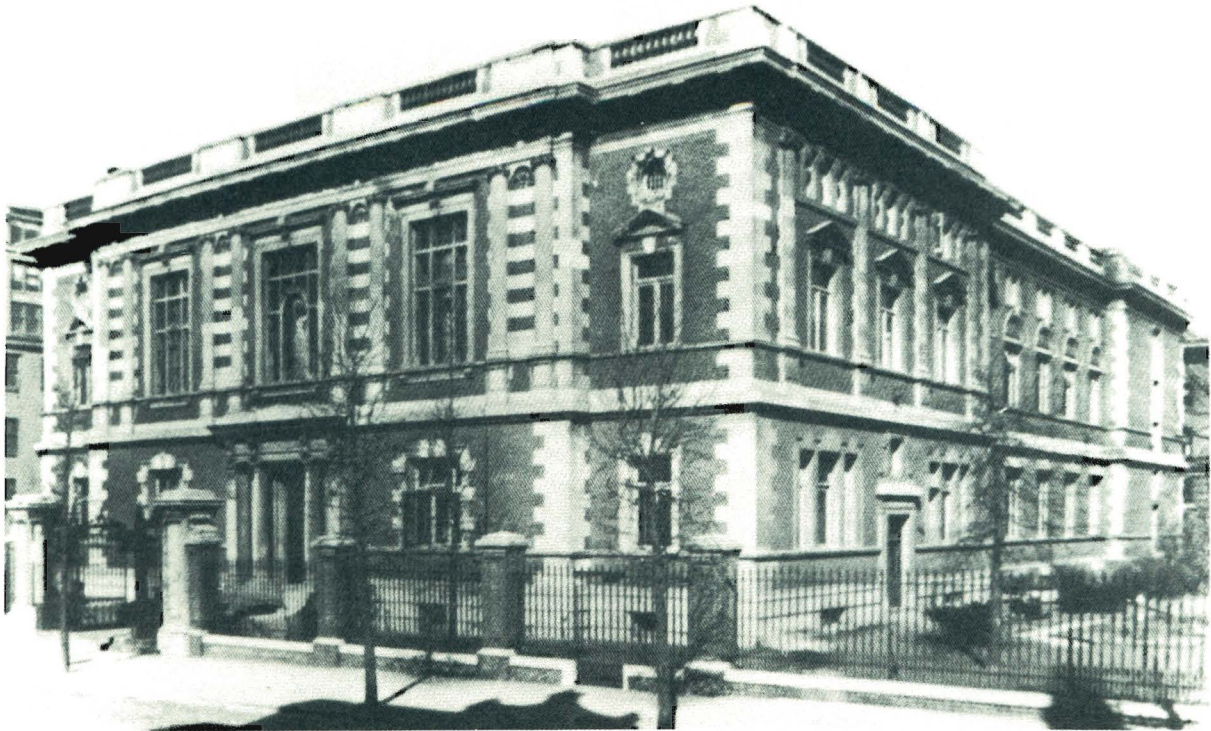
Fig. 192. Major Francis E. Weatherby (JMC, '13), Professor of Military Science and Tactics. (1931)



Fig. 193. John E. Livingood (JMC, '13), radiologist and Alumni President (1957).

Rosenthal, Simon Harry, VA
Ruben, Benjamin D., NY
Sage, Abner Potts H., MS
Schwarz, Paul Edgar, PA
Stone, Joseph William, WA
Storm, George Randolph, MS
Strickland, James Gardner, PA
Tempesto, Joseph Anthony, PA
Templeton, John Young, Jr., NC
Thomas, Barton Kathcart, PA
Thompson, John William, PA
Thysell, Fred August, MN
Tidball, Charles Willis, IA
Tipton, Samuel Powell, MS
Torrence, James Monroe, Jr., PA
Treacy, Edward Aloysius, PA
Tuttle, Kenneth, NY

Vernon, Charles Taylor, NC
Wagner, John George, NJ
Walker, Jacob, PA
Walter, Paul H., PA
Wayland, Raymond Theodore, CA
Weatherby, Francis Elwood, NJ
Weaver, William Amy, Jr., PA
Webster, George C., Jr., PA
Wentz, Frank Riegel, PA
Whittemore, Clarence, NY
Wiant, Roy Elson, OH
Wolfe, Robert Morton, PA
Wright, Louis W., PA
Yeakle, Walter Atwood, PA
Young, Charles Henry, SC
Young, Mason Pressly, SC
Yutski, William James, PA



College of Physicians, 19 South Twenty-Second Street. Erected 1909. (Courtesy, College of Physicians of Philadelphia.)

The 147 graduates received their M.D. degrees on June 6. The Address was delivered by Henry Harbaugh Apple, A.M., D.D., LL.D., President of Franklin and Marshall College, who spoke on "Ideals in Education for the Profession of Medicine".

The cost of tuition at this time was \$180 in each of the four years. In this year the requirement for admission was increased to one year of college. Prior to this time (since 1891) the requirement had been a high school education.

The minutes of the Board of Trustees for October 18, 1914, recorded the following: "The Jefferson Medical College has finally received tardy justice from the American Medical Association in being placed, in the early part of this year, in the A plus Class of American Medical Colleges." A deciding factor in this highest rating was the Daniel Baugh institute of Anatomy which enhanced the basic science facilities.

The opening of the Department for Diseases of the Chest, planned during 1913, occurred in April of this year. The facility, located at 238 Pine Street, would add an important dimension to the teaching of physical diagnosis and chest diseases.

David Bacharach Allman (Fig. 194), of New Jersey, became a prominent surgeon in Atlantic City. Always interested in his alma mater, he served as President of the Alumni Association in 1943. Active in civic affairs and organized medicine, he also became President of the American Medical Association (1957/58).

Edward Louis Bauer was the seventh in eight generations in his family who became physicians, the last four of whom were Jefferson alumni. He led a crusade against diphtheria in the City of Philadelphia and had other major public health accomplishments. He held the position of Physician to Girard College for many years and served as Chairman of Pediatrics at Jefferson from 1926 to 1954 (Fig. 195). He was President of The Alumni Association in 1941. Dr. Bauer in later life spent six years of voluntary

fulltime research on a history of Jefferson Medical College entitled *Doctors Made in America*, published in 1963. He is credited with establishing the correct date of the founding of Jefferson Medical College in 1824 rather than the previously accepted 1825. His book brought much by-passed Jefferson history into focus and stimulated further investigation. In 1967 Dr. Bauer honored the memory of a deceased member of the Pediatric Staff, Dr. Norman MacNeill (JMC, '16, Fig. 198), in a book entitled *Profile of a Gentle Man*.

Mitchell Bernstein held a teaching medical



Fig. 194. David B. Allman (JMC, '14), Alumni Association President (1943) and American Medical Association President (1957).

service for Jefferson students at the Philadelphia General Hospital for many years and also was a Chief of Medicine at the old Jewish Hospital (now Northern Einstein Medical Center).

Alvin Meyers Struse is worthy of mention for having had the highest average for the entire four-year curriculum and winning eight prizes and one honorable mention at graduation.

CLASS OF 1914

Allman, David Bacharach, NJ
Armitage, George Lawrence, Jr., GA
Barnes, Albert Edmond, RI
Barsky, Joseph Mitchell, DE
Bauer, Arthur James, IN
Bauer, Edward Louis, PA
Benbow, Thomas Alex P., AUSTRALIA
Bennett, John Terrell, MS
Bennett, Earl Leslie, IL
Bentley, David Fuller, Jr., NJ
Bernstein, Mitchell, PA
Bittner, Clarence Lavan, PA
Blair, Mortimer Warren, PA
Blotz, Benjamin Franklin, NE
Bolin, Zera Exley, PA
Bowman, Kent A., PA
Boykin, Irvine Manning, SC
Braude, Bennett Arthur, PA
Brenner, Charles Raymond, PA
Bretz, Gilbert Freck, PA
Brown, George Arnold, MS
Buie, Roderick Mark, NC
Cantough, Charles Solomon, PA
Castlebury, Galen David, PA
Chesner, Frank Maurice, PA
Clancy, Leo Joseph, MA
Costello, Bernard Edward, PA
Crawford, Joseph William, PA
Crews, Numa Haden, NC
Curran, Arthur Manning, MA
Daniels, Winfred Harry, PA
Deck, Roy, PA
Dengler, Charles Rowse, PA
Dougherty, William Sylvester, PA
Dyson, Frank, PA
Edgerton, Ambrose Earl, NY
Ellis, Robert Lee, SC
Englerth, Louis Daniel, OH
Ford, William, PA
Freas, Martin Wesley, PA
Friedenwald, Gilbert A., PA
Garvey, Joseph Peter, PA
Gasser, Rolland Raymond, ID
Gilhool, Edward William, PA
Gill, Spencer Glas, VA
Gilmore, Irvin Thompson, PA

Glenn, Charles Roland, IA
Goldcamp, Edward C., OH
Gowen, Francis Vincent, PA
Griffen, Daniel Patrick, NH
Grigg, Elmer Roy, MT
Hackett, G. Clifford, NY
Haines, Charles LeRoy, PA
Harmon, Robert J. P., NY
Harris, Jack Hawley, NC
Hawkins, Harrison Morton, PA
Helff, Joseph Reuben, NH
Hicks, William Morse, OH
Hoge, Arthur Kenworthy, WV
Horn, George Frederick, PA



Fig. 195. Edward L. Bauer (JMC, '14), Alumni President (1941), Chairman of Pediatrics (1926-1954), and Historian.

Hurdle, Samuel Walker, NC
Jackson, Sumner Waldron, ME
James, Maurice Clayton, WV
Kaighn, Charles Butcher, NJ
Kane, Leo Anthony, PA
Kay, James, PA
Keath, James W., PA
Kendrick, John Fox, SC
Kerstetter, Paul Franklin, PA
Kieffer, Uldrick McLaws, GA
King, Ernest Harold, CT
Knoll, Frederick William, PA
Laughlin, Van Sanford, NY
Lavine, Barney Doibe, NJ
Leach, E. Clements, CT
Leidy, Ralph Ellis, PA
Lerner, Macy Levi, NY
Lewis, John Saunders, Jr., OH
Long, Melville Hammond, CA
MacCollum, Isaac J., DE
MacKnight, Richard Patton, MA
Marcus, Joseph Harvey, CANADA
Martin, Charles J., NE
Mayes, Robert Lusk, SC
McConaughey, James Collier, WV
McIlvaine, William Earle, NJ
Means, Paul Barringer, NC
Metcalf, Elliott Harrison, CT
Miller, Harold Attig, PA
Mills, Arthur, RI
Montgomery, David Earl, OH
Morgan, Benjamin Franklin, OH
Morrow, James Robert, PA
Moss, John Hunton, AR
Mullahey, Leo Thomas, PA
Myers, Samuel Zigman, PA
Nesbit, Dean Abbott, PA
Nixon, Holbert James, PA
Oliver, Adlai S., NC
Pace, Karl Busbee, NC
Padilla, Alfonso, PUERTO RICO
Park, John Fish, PA
Parrish, Robert Eunice, NC
Parson, Russel Cisney, PA

Peck, Earle Curtiss, CT
Person, Russell Harrison, PA
Petree, Paul Augustus, NC
Pflug, Ferdinand James, NJ
Phillips, Charles Hayden, PA
Pratt, Malcolm Lewis, OH
Quackenbos, Harrie Maxwell, NY
Reuling, James Risley, Jr., IA
Rodman, Nathaniel Fulford, VA
Rush, Eugene, NY
Saunders, Sheldon Asa, NC
Scharmann, Frank George, PA
Schubb, Thomas, PA
Seely, Roy Brown, NJ
Sharp, Charles Edward, NJ
Sharpe, Charles Ray, NC
Slocum, Morris Abel, PA
Smith, Ernest Elmer, MA
Smith, James Davis, VA
Snow, Lawrence C., UT
Snyder, Charles Reif, PA
Speed, Joseph Anderson, NC
Sprague, Charles Henry, ID
Staub, Carl Aloysius, PA
Steadman, Henry Ree, PA
Stevens, Floyd W., PA
Stokes, Earl B., NJ
Stork, Edwin Gordon, PA
Struse, Alvin Myers, PA
Thaxton, Benjamin Adams, NC
Turley, Hubert King, MS
Valentin, August Carl, PA
Voorhees, Bert Grant, PA
Washburn, Horace Dlos, PA
Webber, Edwin Russell, CT
Webster, Jesse Grant, PA
Wheelock, Harry Elmer, NY
Whelan, William Francis, MO
White, William Francis, PA
Whitlock, Francis Elias, OH
Wickert, Howard Tilghman, PA
Williams, Victor Albert, PA
Winston, Gilbert Isaac, PA
Wolin, David, NY

The Guns of August, Barbara Tuckman's classic book title for the onset of World War I.