

12-8-2015

Comprehensive Profiling of Metaplastic Breast Carcinoma Reveals Frequent Over-Expression of PD-L1

Zoran Gatalica

Caris Life Sciences, Phoenix, AZ

Upasana Joneja, MD


Thomas Jefferson University Hospital, Philadelphia, PA

Anatole Ghazalpour

Caris Life Sciences, Phoenix, AZ

Jeffrey Swensen

Caris Life Sciences, Phoenix, AZ at: <https://jdc.jefferson.edu/pacbresidentposters>

 Part of the [Medical Anatomy Commons](#), [Medical Cell Biology Commons](#), and the [Medical Pathology Commons](#)
Rebecca Feldman
Caris Life Sciences, Phoenix, AZ

[Let us know how access to this document benefits you](#)

See next page for additional authors

Recommended Citation

Gatalica, Zoran; Joneja, MD, Upasana; Ghazalpour, Anatole; Swensen, Jeffrey; Feldman, Rebecca; Cai, Fred; Chen, Sting; Xiao, Nick; Reddy, Sandeep; and Vranić, Semir, "Comprehensive Profiling of Metaplastic Breast Carcinoma Reveals Frequent Over-Expression of PD-L1" (2015).

Department of Pathology, Anatomy, and Cell Biology Resident's Posters. Paper 19.

<https://jdc.jefferson.edu/pacbresidentposters/19>

This Article is brought to you for free and open access by the Jefferson Digital Commons. The Jefferson Digital Commons is a service of Thomas Jefferson University's [Center for Teaching and Learning \(CTL\)](#). The Commons is a showcase for Jefferson books and journals, peer-reviewed scholarly publications, unique historical collections from the University archives, and teaching tools. The Jefferson Digital Commons allows researchers and interested readers anywhere in the world to learn about and keep up to date with Jefferson scholarship. This article has been accepted for inclusion in Department of Pathology, Anatomy, and Cell Biology Resident's Posters by an authorized administrator of the Jefferson Digital Commons. For more information, please contact: JeffersonDigitalCommons@jefferson.edu.

Authors

Zoran Gatalica; Upasana Joneja, MD; Anatole Ghazalpour; Jeffrey Swensen; Rebecca Feldman; Fred Cai; Sting Chen; Nick Xiao; Sandeep Reddy; and Semir Vranić



Comprehensive Profiling of Metaplastic Breast Carcinoma Reveals Frequent Over-Expression of PD-L1

Zoran Gatalica¹, Upasana Joneja², Anatole Ghazalpour¹, Jeffrey Swensen¹, Rebecca Feldman¹, Fred Cai¹, Sting Chen¹, Nick Xiao¹, Sandeep Reddy¹, Semir Vranić³, Juan Palazzo²

¹ Caris Life Sciences, Phoenix, AZ; ² Jefferson University Hospitals, Philadelphia, PA, ³University Clinical Center, Sarajevo, Bosnia and Herzegovina



Abstract (updated)

Background: Metaplastic breast carcinoma (MBC) is a rare subtype of breast carcinoma less responsive to conventional chemotherapy relative to usual breast carcinomas such as ductal and lobular subtype. In molecular terms, MBC usually clusters with triple negative breast cancers (TNBC), but MBCs portray a worse prognosis in comparison with TNBC. Published studies investigating MBCs for specific biomarkers of therapy response are rare and limited by the methodological approaches.

Methods: 297 samples [MBC (n=75), triple-negative breast cancer of no-special-type (TNBC-NOS, n=106), HER2-positive breast cancers (n=32) and luminal (ER+/Her2-) breast cancers (n=84)] were profiled using direct sequencing analysis [Illumina MiSeq Next Generation Sequencing (NGS)]. Immunohistochemistry for PD-L1 (SP142, Spring Bioscience) and PD-1 (NAT105, Ventana) was performed using automated procedures.

Results: 89% MBCs exhibited triple-negative immunophenotype (ER-/PR-/HER2-). The most common mutations in MBCs included *TP53* (67%) and *PIK3CA* mutations (23%). Other mutations were rare including *HRAS* mutations (7%), *STK11* (5%), *FBXW7*, *PTEN*, *c-MET* and *JAK3* (4%, respectively). PD-L1 expression on cancer cells was detected in significantly higher proportion of MBCs (46%) than in other molecular subtypes (6% in luminal and HER2+ breast cancers, respectively and 9% in TNBC-NOS, p<0.001). PD-1 positive tumors infiltrating lymphocytes (TILs) varied greatly in MBCs (0 to >50/mm²).

Conclusion: Comprehensive profiling of a large cohort of this rare carcinoma highlighted predominance of *TP53* mutations, wild type *EGFR* gene expression, a distinct increase in proportion of PD-L1 expression in carcinoma cells, and PD-1 expression in TILs. The latter properties can be exploited in clinical trials utilizing immune check point inhibitors.

Background

Metaplastic breast carcinoma (MBC) encompasses a group of mammary neoplasms characterized by differentiation of the neoplastic epithelium into squamous or mesenchymal cells (1). It is less responsive to conventional chemotherapy compared to the usual ductal and lobular breast carcinomas (2). In molecular terms, MBC usually clusters with triple negative (ER-/PR-/ Her2-) breast cancer (TNBC), but MBCs portray a worse prognosis in comparison with TNBC. Published studies investigating MBCs for specific biomarkers of therapy response are rare and limited by the methodological approaches (3, 4).

Methods

The study included 297 samples [MBC (n=75), triple-negative breast cancer of no-special-type (TNBC-NOS, n=106), HER2-positive breast cancers (n=32) and luminal (ER+/Her2-) breast cancers (n=84)]. The samples were profiled using direct sequencing analysis [Illumina MiSeq Next Generation Sequencing (NGS)] using formalin-fixed paraffin embedded tissue blocks. **Immunohistochemistry** for PD-L1 (SP142, Spring Bioscience) and PD-1 (EH12.1, Pharmingen) was performed using automated procedures.

Results (updated)

Mean age of patients: 57 years (range, 35-93 years).

Histology: MBCs exhibited various morphologic features including squamous, myoepithelial, spindle, and rhabdoid morphology with heterologous elements: bone (n=3) and cartilage (n=22 cases).

ER, PR and **HER2** status were available for 71 patients; 63 cases (89%) of MBCs exhibited triple-negative phenotype; the remaining 8 cases (11%) were ER/or PR positive (7 cases) and HER2 positive (1 case).

PD-1 and PD-L1 expression in metaplastic carcinoma

Group	PDL-1 status		Total
	negative	positive	
Metaplastic carcinoma	39 (54%)	33 (46%)	72
TNBC NOS	93 (91%)	9 (9%)	102
HER2+	30 (94%)	2 (6%)	32
Luminal carcinoma	79 (94%)	5 (6%)	84
Total	241 (83%)	49 (17%)	290

Table 1. PD-L1 expression was significantly higher in metaplastic carcinomas in comparison with other breast cancer subtypes (46% vs. 6-9%, p<0.001).

TME (PD-L1/TIL)		Frequency (%)
Type	Type 1 (PD-L1+, TILs+)	29 (40.8%)
	Type 2 (PD-L1-, TIL-)	14 (19.7%)
	Type 3 (PD-L1+, TIL-)	4 (5.6%)
	Type 4 (PD-L1-, TIL+)	24 (33.8%)
Total		71 (100%)

Table 2. The stratification of MBCs into 4 types (5) on the basis of PD-L1 and TILs status; The proposed stratification is a framework to tailored (tailor) immunotherapy against tumor microenvironment (TME);

PD-1 positive tumors infiltrating lymphocytes (TILs) varied greatly in MBCs (0 to 400/mm², mean: 67.3). No significant association was found between the number of TILs and PD-L1 status (p=0.209).

Overall PD-L1 positivity among 75 metaplastic breast carcinomas was 46%; highest of all types.

Figure 1

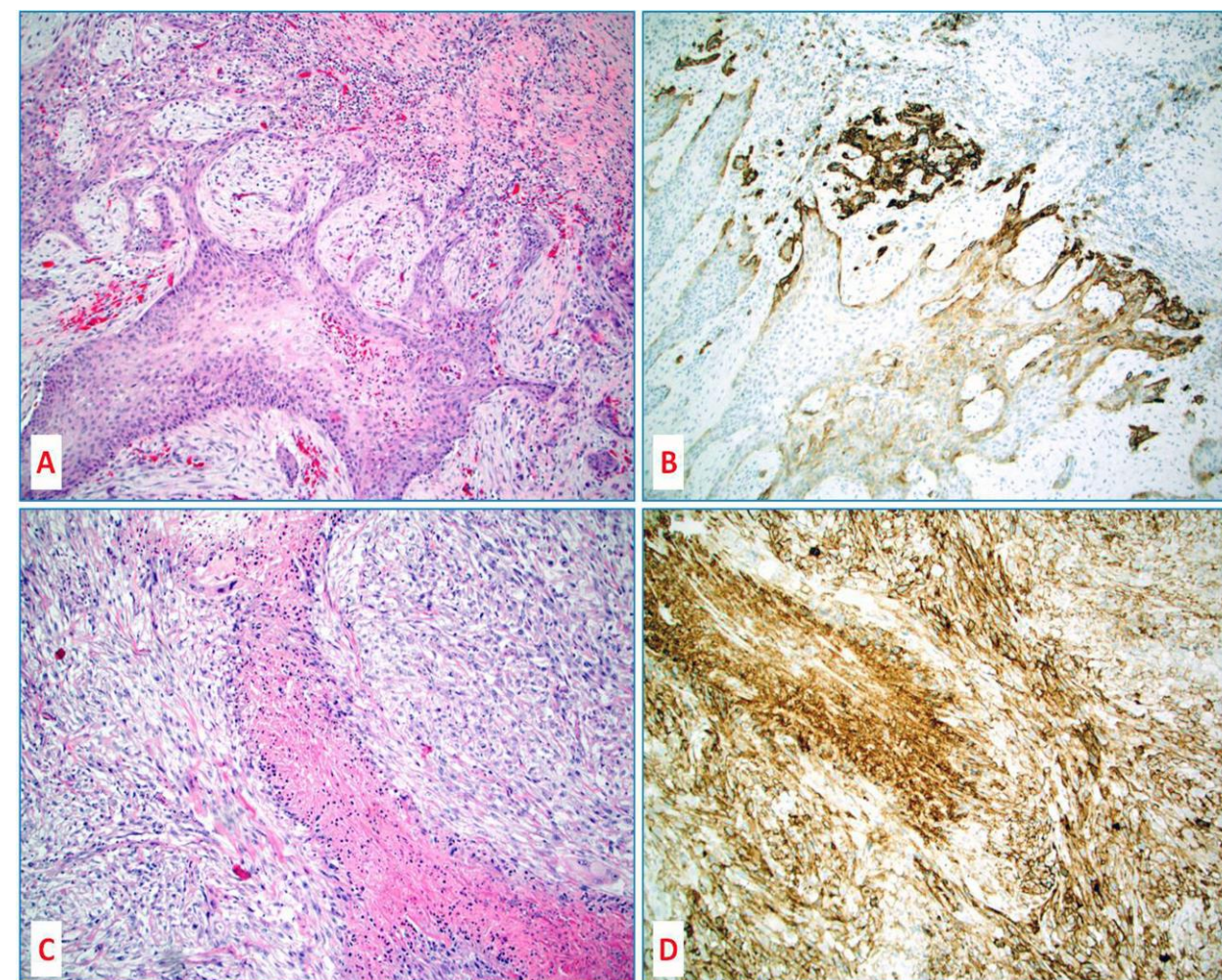
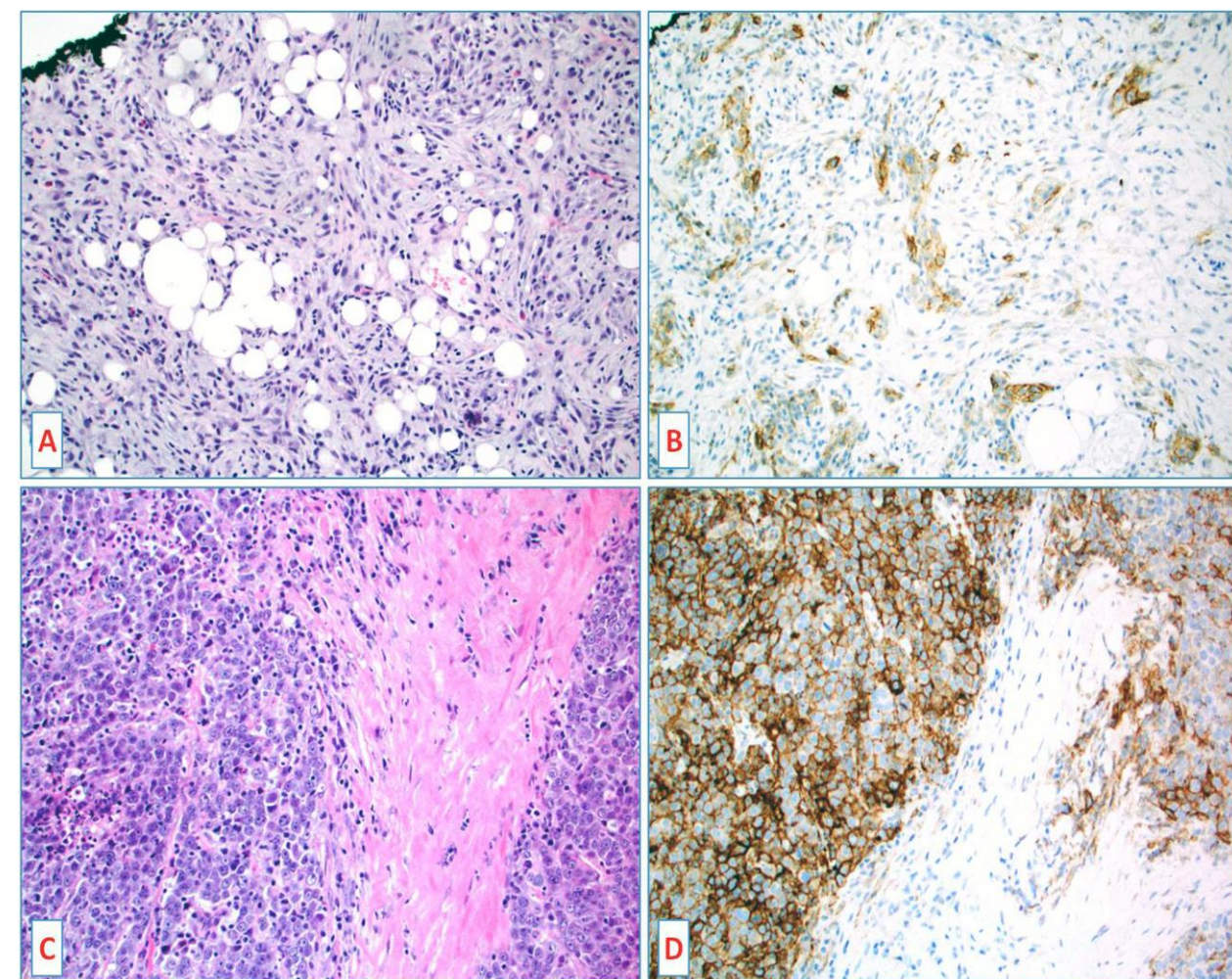


Figure 2



Figures 1A-D, 2A-D. Despite various morphologic appearances (A, C) of metaplastic carcinomas, strong PD-L1 overexpression (B, D) was observed in nearly 50% of the cases.

Mutational profiling of metaplastic carcinoma

72 MBCs were tested by NGS of which 57 cases had interpretable results. Mutations were detected in 16 out of 45 tested genes affecting 48 out 57 metaplastic carcinomas (84%). ***TP53* mutation** was the most frequent mutation (32/57, 56%). In 20 cases, ***TP53*** was the sole mutation detected in the tumor tissue while in the remaining 12 cases other mutations co-occurred. ***PIK3CA*** mutation was the second most common mutation (13/72, 23%) while ***HRAS*** mutations was detected in 4 cases (7%), ***STK11*** in 3 cases (5%), ***FBXW7***, ***PTEN***, ***c-MET*** and ***JAK3*** in two cases, respectively (4%). Single cases harbored mutations of ***AKT1***, ***APC***, ***BRAF***, ***RET***, ***c-KIT***, ***MLH1***, ***RET***, and ***SMAD4*** genes. None of the cases harbored ***EGFR*** mutation.

Conclusions

Metaplastic carcinomas are characterized by increased PD-L1 expression in carcinoma cells, and PD-1 expression in TILs, which can be exploited in clinical trials utilizing immune check point inhibitors in this hard-to-treat subtype of breast cancer.

Comprehensive mutational profiling of MBC highlighted predominance of *TP53* and *PIK3CA* mutations and a wild type *EGFR* gene expression.

References

- Reis –Filho JS et al. Metaplastic carcinoma. In WHO Classification of tumours of the breast. Lakhani SR, Ellis IO, Schnitt SJ, Tan PH and van der Vijver MJ (Eds). IARC Press Lyon 2012.
- Abouharb S, Moulder S. Metaplastic Breast Cancer: Clinical Overview and Molecular Aberrations for Potential Targeted Therapy. Curr Oncol Rep 2015;17:10.
- Elizabeth McKinnon E, Xiao P. Metaplastic Carcinoma of the Breast. Arch Pathol Lab Med 2015;139:819–822.
- Zhang Y, Toy KA, Kleer CG. Metaplastic breast carcinomas are enriched in markers of tumor-initiating cells and epithelial to mesenchymal transition. Mod Pathol 2012;25:178-84.
- Smyth MJ et al. Combination cancer immunotherapies tailored to the tumour microenvironment . Nature Rev Clin Oncol 2015 doi: 10.1038/nrclinonc.2015.209. [Epub ahead of print] Review.