
On the anatomy of the breast, by Sir Astley
Paston Cooper, 1840

Rare Medical Books

1840

On the anatomy of the breast - Plate VII: Ducts, glandules, and cells

Sir Astley Paston Cooper , Bart.

Follow this and additional works at: <https://jdc.jefferson.edu/cooper>



Part of the [History of Science, Technology, and Medicine Commons](#)

[Let us know how access to this document benefits you](#)

Recommended Citation

Cooper, Sir Astley Paston , Bart., "On the anatomy of the breast - Plate VII: Ducts, glandules, and cells" (1840). *On the anatomy of the breast, by Sir Astley Paston Cooper, 1840*. Paper 17.
<https://jdc.jefferson.edu/cooper/17>

This Article is brought to you for free and open access by the Jefferson Digital Commons. The Jefferson Digital Commons is a service of Thomas Jefferson University's [Center for Teaching and Learning \(CTL\)](#). The Commons is a showcase for Jefferson books and journals, peer-reviewed scholarly publications, unique historical collections from the University archives, and teaching tools. The Jefferson Digital Commons allows researchers and interested readers anywhere in the world to learn about and keep up to date with Jefferson scholarship. This article has been accepted for inclusion in *On the anatomy of the breast, by Sir Astley Paston Cooper, 1840* by an authorized administrator of the Jefferson Digital Commons. For more information, please contact: JeffersonDigitalCommons@jefferson.edu.

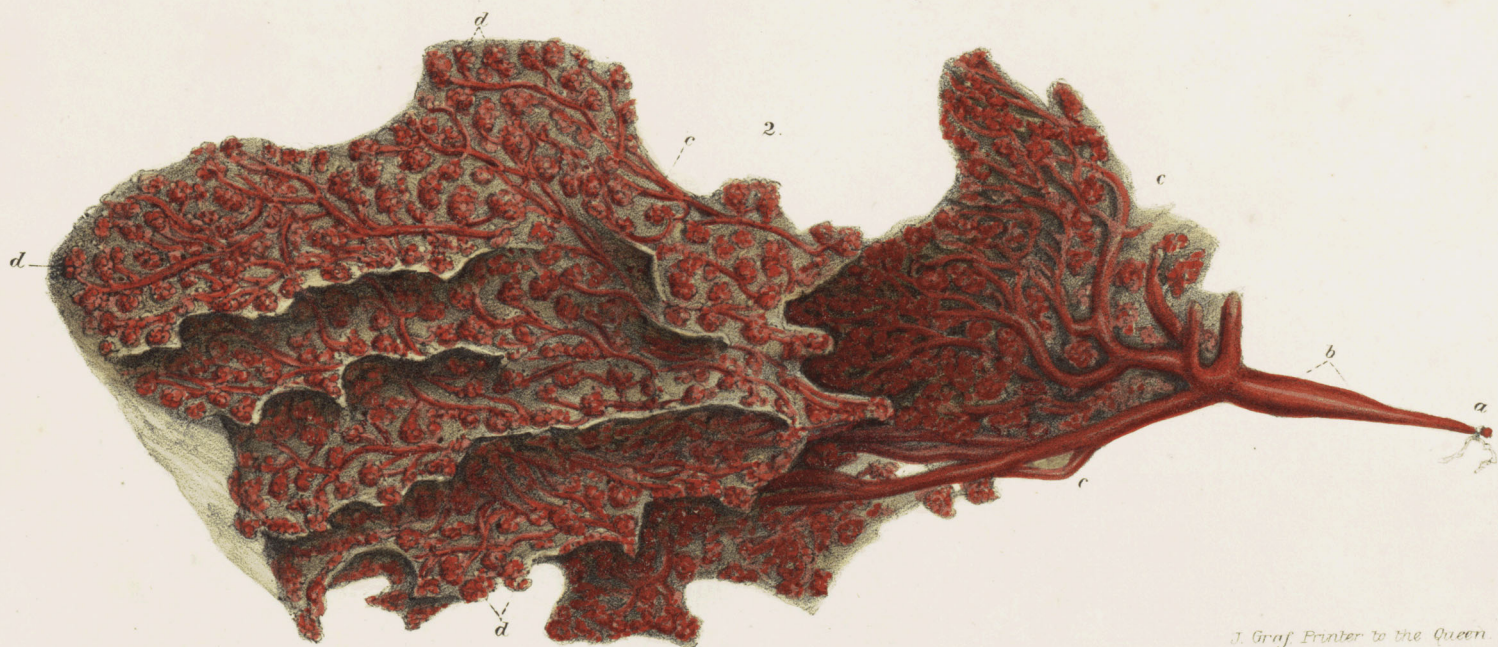
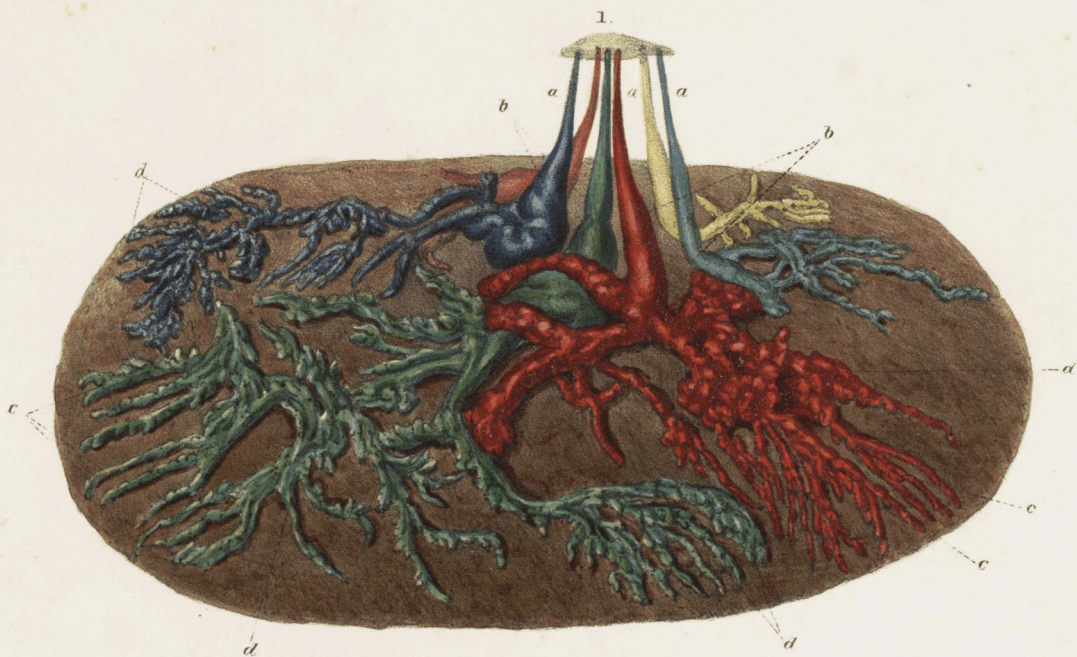


PLATE VII.

Ducts, Glandules, and Cells.

Fig. 1. A view of a preparation of six milk tubes injected from the nipple.

a, a, a, The straight or mamillary tubes, proceeding from the apex of the nipple.

b, b, b, The reservoirs or dilatations of the ducts.

c, c, c, The branches of the mammary ducts.

d, d, d, d, Their glandules.

Fig. 2. Shows a single lactiferous tube, injected with red wax, and proceeding through the breast.

a, Its orifice.

b, Its reservoir.

c, c, c, The branches of the duct.

d, d, d, The glandules seen upon four folds of the anterior surface of the breast.

Fig. 3. The milk cells six times magnified.

a, a, a, Branches of the duct.

b, b, b, The milk cells.

This preparation has been injected with yellow wax, and sections of it were made to show the ducts and cells.

Fig. 4. Section of another preparation made to show the ducts and milk-cells (magnified six times by a simple lens).

a, a, The ducts.

b, b, b, The milk-cells.

Fig. 5. Shows the origin of the ducts from the milk-cells (injected with quicksilver and magnified four times).

Fig. 6. Also shows the ducts arising from the cells, but at the lower part minute branches of the duct may be seen passing into the cells (also injected with quicksilver, magnified four times). Another Plate is given without colour.