

9-11-2017

## Portable Privacy

Larken McCarthy (Interior Design)  
*Thomas Jefferson University*

Breah Banks (Landscape Architecture)  
*Thomas Jefferson University*

Follow this and additional works at: <https://jdc.jefferson.edu/nexusmaximus>



Part of the [Interior Architecture Commons](#), and the [Medicine and Health Sciences Commons](#)

**[Let us know how access to this document benefits you](#)**

---

### Recommended Citation

McCarthy (Interior Design), Larken and Banks (Landscape Architecture), Breah, "Portable Privacy" (2017).  
*Nexus Maximus*. 16.

<https://jdc.jefferson.edu/nexusmaximus/16>

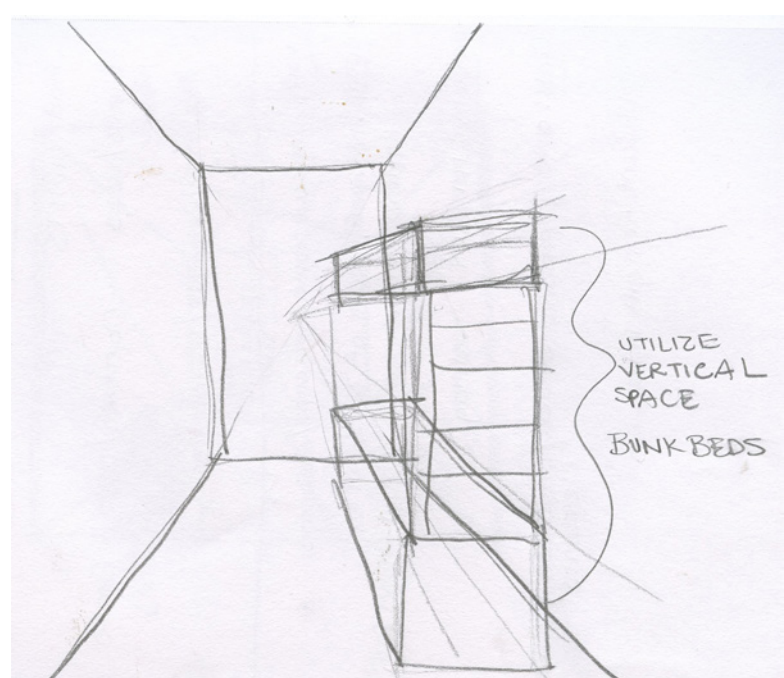
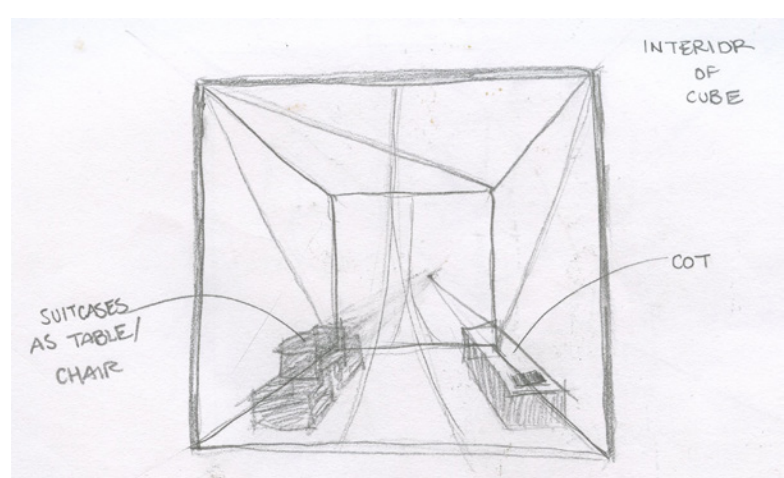
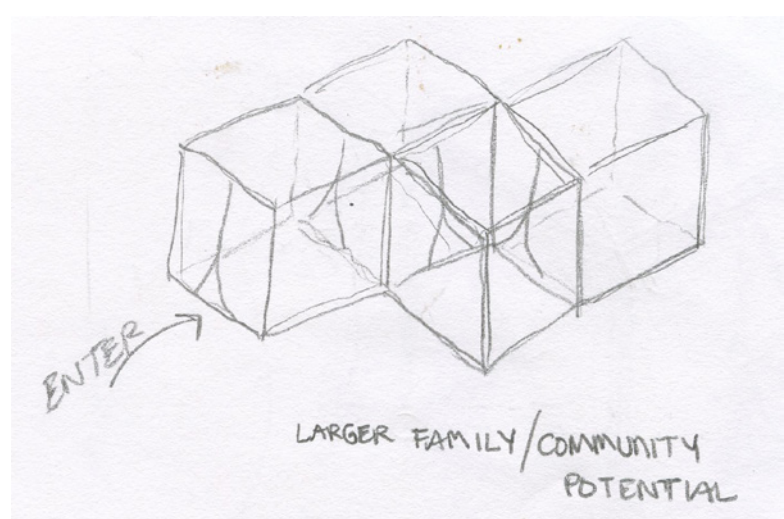
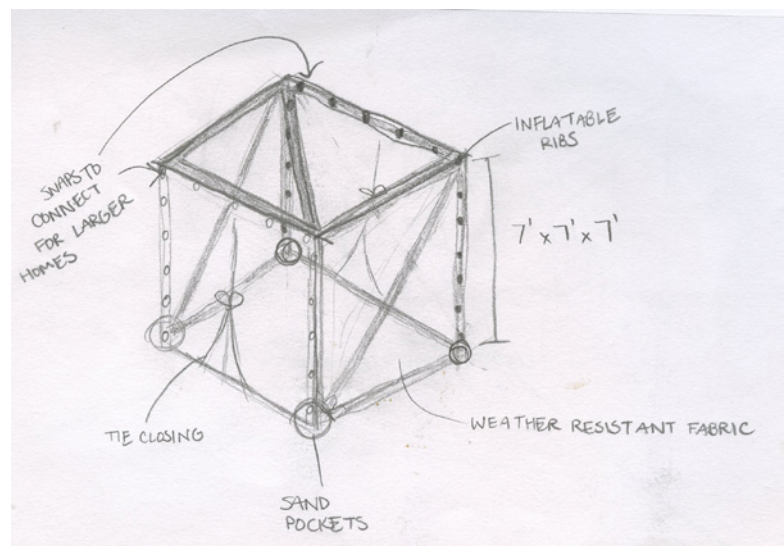
This Article is brought to you for free and open access by the Jefferson Digital Commons. The Jefferson Digital Commons is a service of Thomas Jefferson University's [Center for Teaching and Learning \(CTL\)](#). The Commons is a showcase for Jefferson books and journals, peer-reviewed scholarly publications, unique historical collections from the University archives, and teaching tools. The Jefferson Digital Commons allows researchers and interested readers anywhere in the world to learn about and keep up to date with Jefferson scholarship. This article has been accepted for inclusion in Nexus Maximus by an authorized administrator of the Jefferson Digital Commons. For more information, please contact: [JeffersonDigitalCommons@jefferson.edu](mailto:JeffersonDigitalCommons@jefferson.edu).



DUCTUS 6  
NEXUS 2017

BREAH BANKS  
&  
LARKEN  
MCCARTHY

INITIAL CONCEPT  
SKETCHES



C L I E N T

NON-PROFIT  
SECTOR OF A  
BUSINESS WHOSE  
PRIMARY GOAL  
IS TO DEVELOP  
AN EFFECTIVE  
SOLUTION

U S E R S

DISPLACED  
PEOPLE IN CAMPS  
AND STADIUMS

Image Top Left: [http://2.bp.blogspot.com/-fVNT0iCemeE/nd9c\\_yWUcYU/AAAAAAAAA8I/zE8UJSvJXQ/s1600/Astrodom6%2B1.jpg](http://2.bp.blogspot.com/-fVNT0iCemeE/nd9c_yWUcYU/AAAAAAAAA8I/zE8UJSvJXQ/s1600/Astrodom6%2B1.jpg)  
Image Top Right: <http://dev4.freyberg.ac.nz/wp-content/uploads/sites/9/2005/09/Hurricane-Katrina-Red-Cross.jpg>  
Material: <http://www.architen.com/articles/the-materials-of-tensile-architecture/>  
Bunk Beds: <http://www.cabellas.com/product/Disco-O-Bed-XL-Cot-Bunk-Beds/735034>  
uts?productVariantId=1634337&WT.mc\_id=GoogleProduct&WT.z\_mc\_id1=50028845&rid=20&gclid=Cj0KCCQjwxdPNBRDmARISAAw-TUnQpNYue3ku-GG-tkPC8YUWUZ18ek4tIDLJ-XkE4tI3Q4zW9GUaAsLFEALw\_wcB&gclid=aw.ds

C U R R E N T I S S U E S

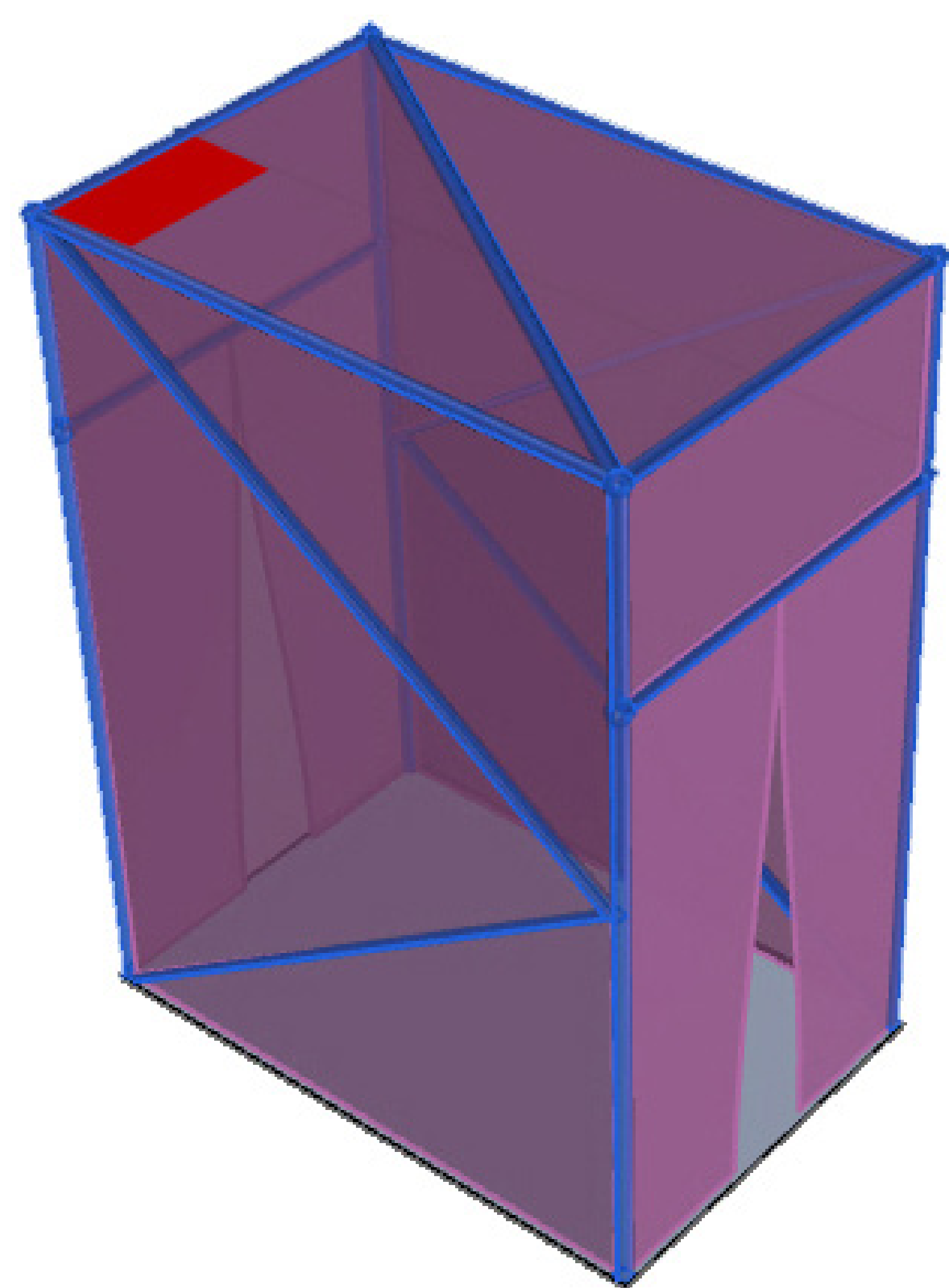


NATURAL DISASTERS AND REFUGEE CRISES RESULT IN THE CREATION OF TEMPORARY CAMPS TO HOUSE DISPLACED INDIVIDUALS WHOSE PAST LIVES AND HOMES NO LONGER EXIST




PRIVACY IS NON-EXISTENT FOR DISPLACED INDIVIDUALS WHOSE NEW HOME IS A COT IN THE MIDDLE OF A STADIUM WITH NO PLACE FOR PERSONAL BELONGINGS AND NEW NEIGHBORS MERE INCHES AWAY

I N T E R I M H O M E S T R U C T U R E



UNIT DIMENSIONS: 4'W x 6'L x 8'H

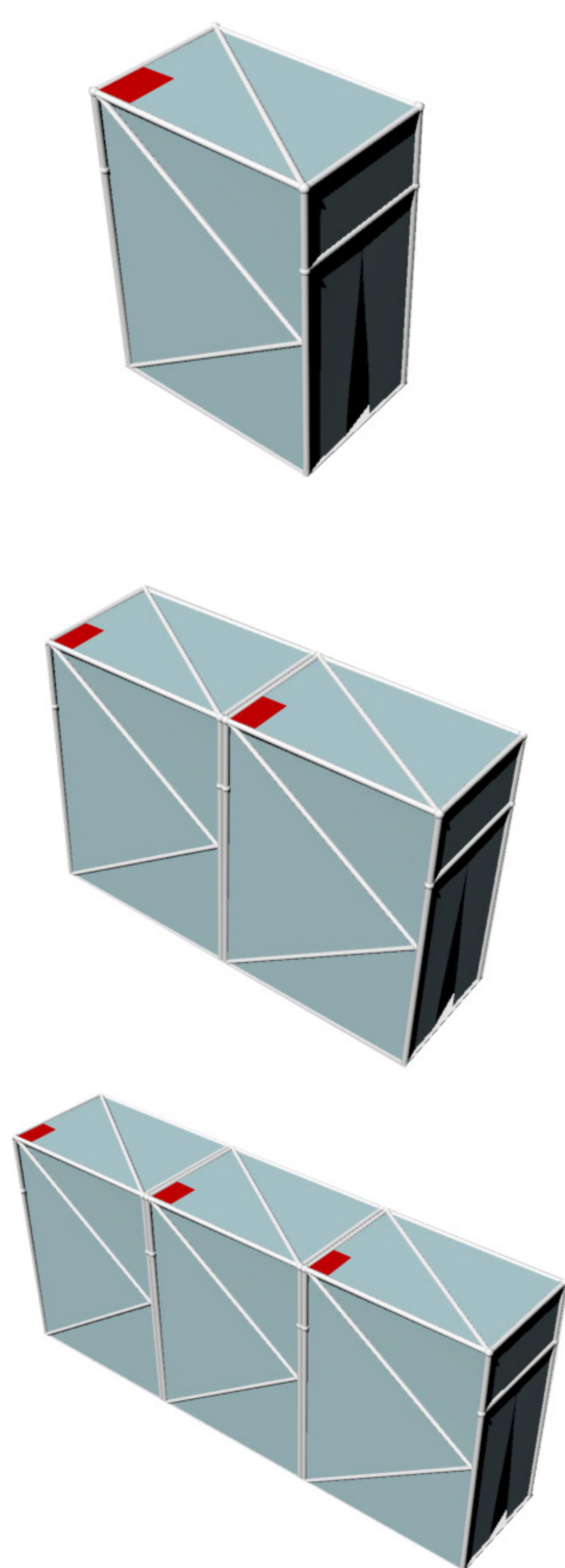
 PVC (POLY VINYL CHLORIDE) COATED POLYESTER CLOTH 20+ YEAR LIFESPAN INCLUDES: UV STABILISERS, FIRE RETARDANTS AND ANTIFUNGICIDES

 INFLATABLE RIB STRUCTURE

 WEIGHTED BASE

 EMERGENCY FLAG: CAN BE PULLED IN TIMES OF DISTRESS TO SIGNAL AID WORKERS

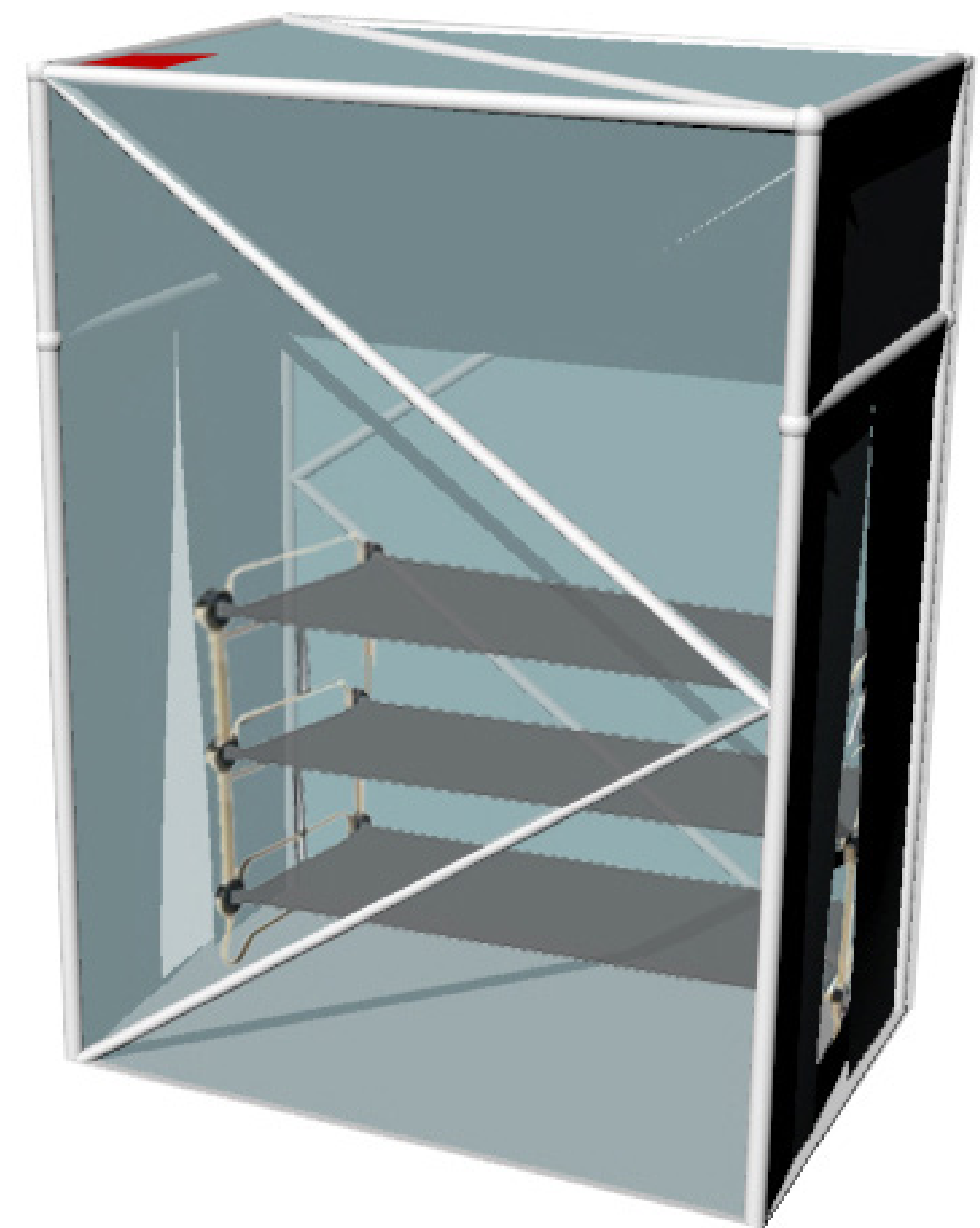
M O D U L A R I T Y



UNITS CAN BE SNAPPED TOGETHER TO ACCOMADATE LARGER FAMILIES OR FOSTER A COMMUNITY ATMOSPHERE

P U R P O S E

CREATING A TEMPORARY HOME FOR DISPLACED PEOPLE IN TIMES OF CRISIS BY MAXIMIZING VERTICAL SPACE WITHIN AN AIR PITCH HOUSING STRUCTURE



STACKABLE COTS TAKE ADVANTAGE OF PREVIOUSLY UNUSED VERTICAL SPACE, SO THE MAXIMUM AMOUNT OF DISPLACED PEOPLE ARE STILL ABLE TO BE ASSISTED