
On the anatomy of the breast, by Sir Astley
Paston Cooper, 1840

Rare Medical Books

1840

On the anatomy of the breast - Plate VI: Ducts and glandules

Sir Astley Paston Cooper , Bart.

Follow this and additional works at: <https://jdc.jefferson.edu/cooper>



Part of the [History of Science, Technology, and Medicine Commons](#)

Let us know how access to this document benefits you

Recommended Citation

Cooper, Sir Astley Paston , Bart., "On the anatomy of the breast - Plate VI: Ducts and glandules" (1840). *On the anatomy of the breast, by Sir Astley Paston Cooper, 1840*. Paper 16.
<https://jdc.jefferson.edu/cooper/16>

This Article is brought to you for free and open access by the Jefferson Digital Commons. The Jefferson Digital Commons is a service of Thomas Jefferson University's [Center for Teaching and Learning \(CTL\)](#). The Commons is a showcase for Jefferson books and journals, peer-reviewed scholarly publications, unique historical collections from the University archives, and teaching tools. The Jefferson Digital Commons allows researchers and interested readers anywhere in the world to learn about and keep up to date with Jefferson scholarship. This article has been accepted for inclusion in *On the anatomy of the breast, by Sir Astley Paston Cooper, 1840* by an authorized administrator of the Jefferson Digital Commons. For more information, please contact: JeffersonDigitalCommons@jefferson.edu.

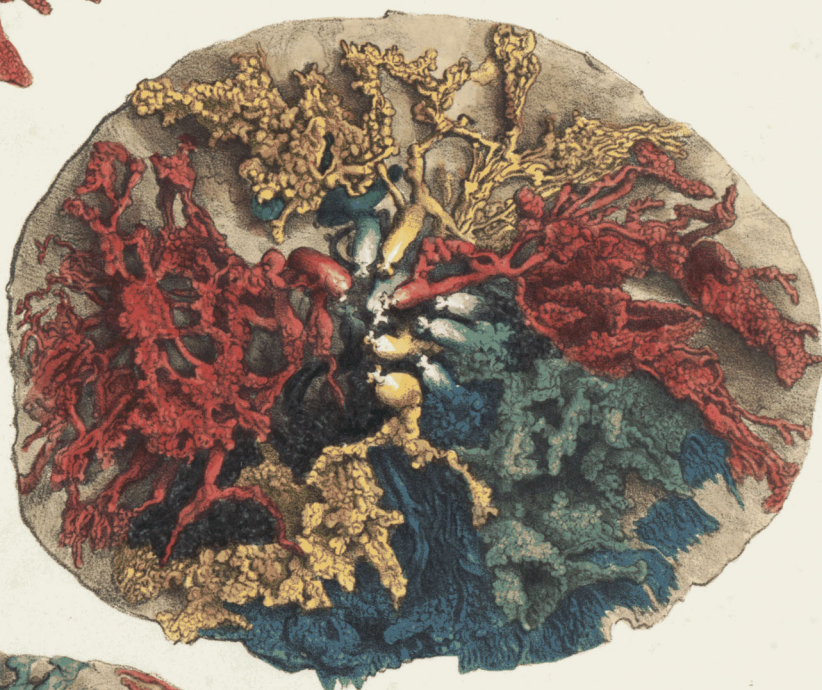
4



1



3



2



PLATE VI.

Ducts and Glandules.

- Fig. 1. Lactiferous tubes or ducts injected with red wax, showing their radiated direction, and, in some places, their inter-ramification.
- Fig. 2. Mammary ducts injected with red, yellow, black, green, and brown, and seen less intermixed than the former.
- Fig. 3. Ducts injected more minutely with yellow, red, green, blue, and black. This preparation shows two additional circumstances : —First, The glandules from which the ducts begin are seen filled with wax. Secondly, At the lower part of the preparation the separate ducts are seen passing above and beneath each other, to render the breast a cushion ; whilst at the upper part the ducts are single.
- Fig. 4. This preparation exhibits the anterior folds of the breast ; some of the ducts are injected, and the glandules of the breast upon the surface of the folds are filled with wax. This is only a part, but the whole of the breast when well injected and dissected, has a similar appearance, of which I have three specimens. I have given a Plate of No. VI., without colour.
-