

# Where Are They Now? Understanding how SRC directorship influences medical student career trajectories and outcomes post-graduation.

Anita Modi, MSII; Ann Vale, MSII; James Plumb, MD, MPH

JeffHOPE, Jefferson Medical College of Thomas Jefferson University, Philadelphia, PA

## Our Purpose:

JeffHOPE, a Student-Run Clinic (SRC) designed to empower and care for Philadelphia's underserved population, was established in 1991 by the students of Jefferson Medical College. Since its inception, the program has been led by over 100 student directors, who oversee each of the five JeffHOPE clinics staffed by fellow medical students every week. But where are the directors now, and how did their leadership experiences caring for the underserved influence their career trajectories? Through the administration of a 20-question survey, we aimed to explore the experiences and accomplishments of medical student directors throughout the 20-year history of JeffHOPE, as well as to determine the relationship between directorship and future specialty choice in primary care, interest in public healthcare advocacy, and continued dedication to caring for the underserved.

## Methods:

Responses to a 20-question survey comprised of multiple-choice and essay questions were used to describe both directorship and post-graduation experiences including specialty choice. As detailed below, commitment to caring for the underserved was gauged by employment at health or academic centers, or voluntary participation in community activities.

### Recognized Health Centers:

Community Health Centers  
Federally-Qualified Health Centers  
Healthcare for the Homeless  
Health Profession Shortage Area  
Indian Health Service  
Migrant Health Center  
National Health Service Corps  
Neighborhood Health Service  
Rural Health Clinic  
State/Local Health Department

### Community Activities:

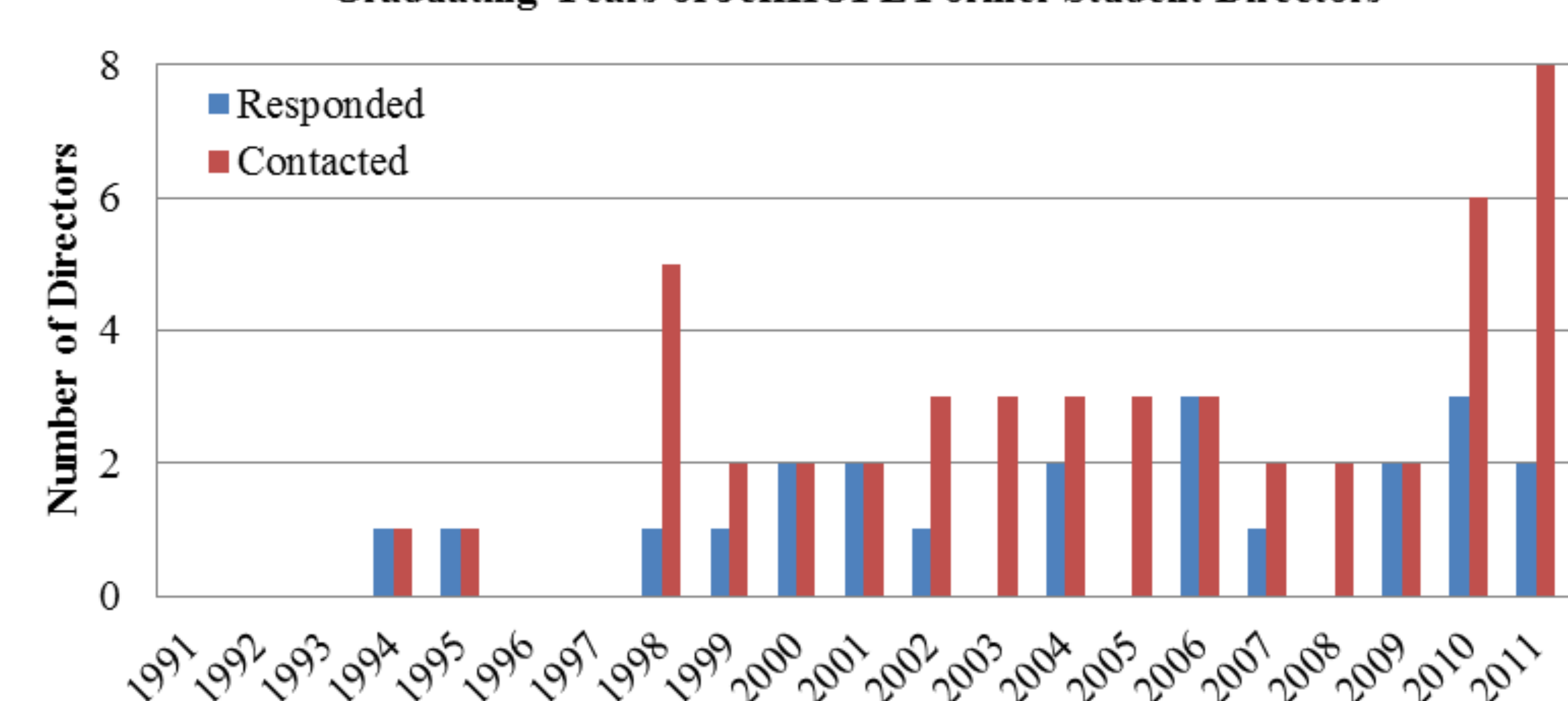
Do you **currently** work part- or full-time in academic position while devoting substantial care to the underserved?

Have you ever participated in a voluntary program in which you were responsible for caring for the underserved (ie. Peace Corps, Doctors Without Borders)?

Have you ever participated in activities related to advocacy for the underserved or healthcare policy development?

Have you ever volunteered to staff free clinics for the underserved?

Graduating Years of JeffHOPE Former Student Directors

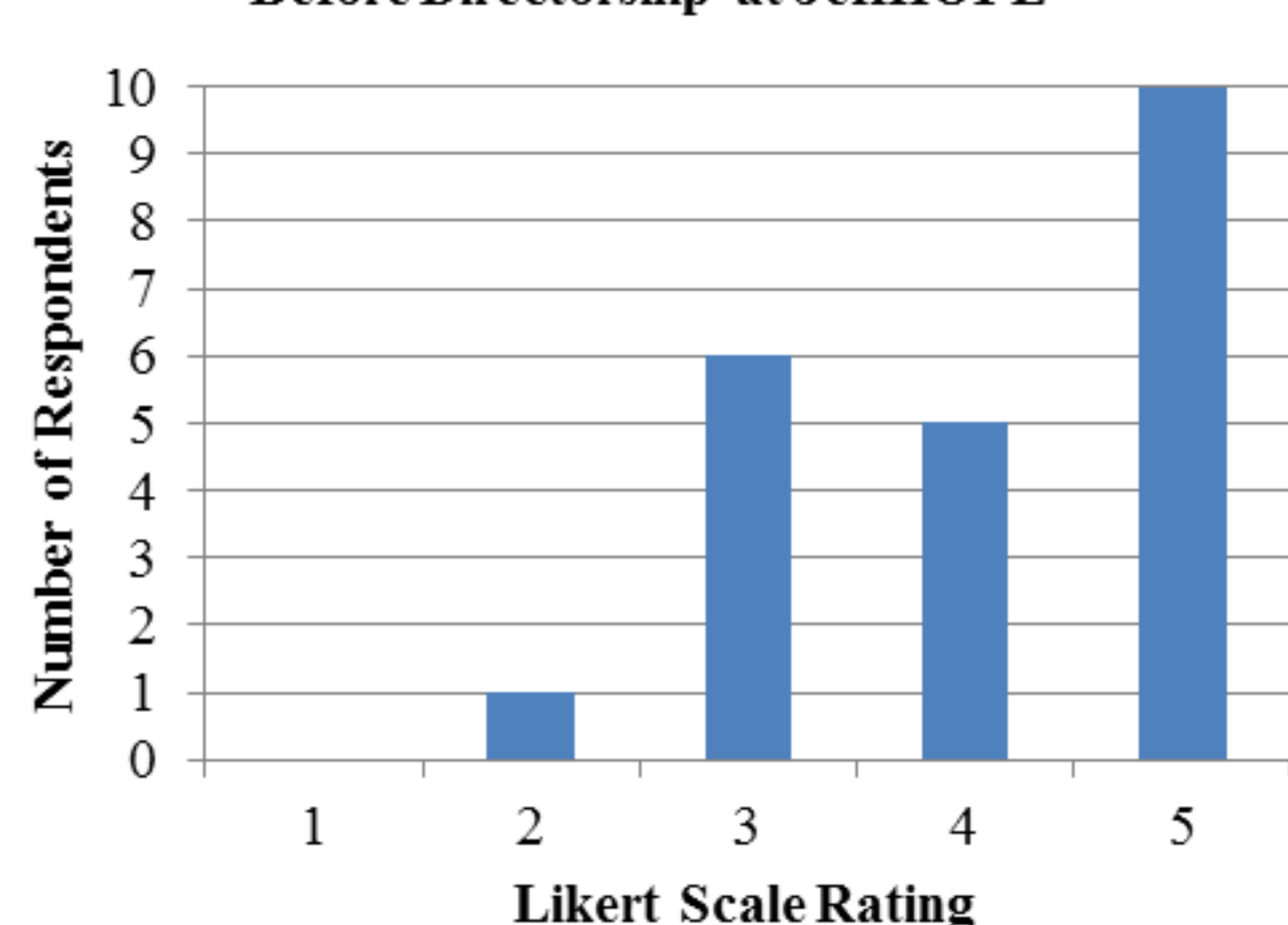


## THEN....

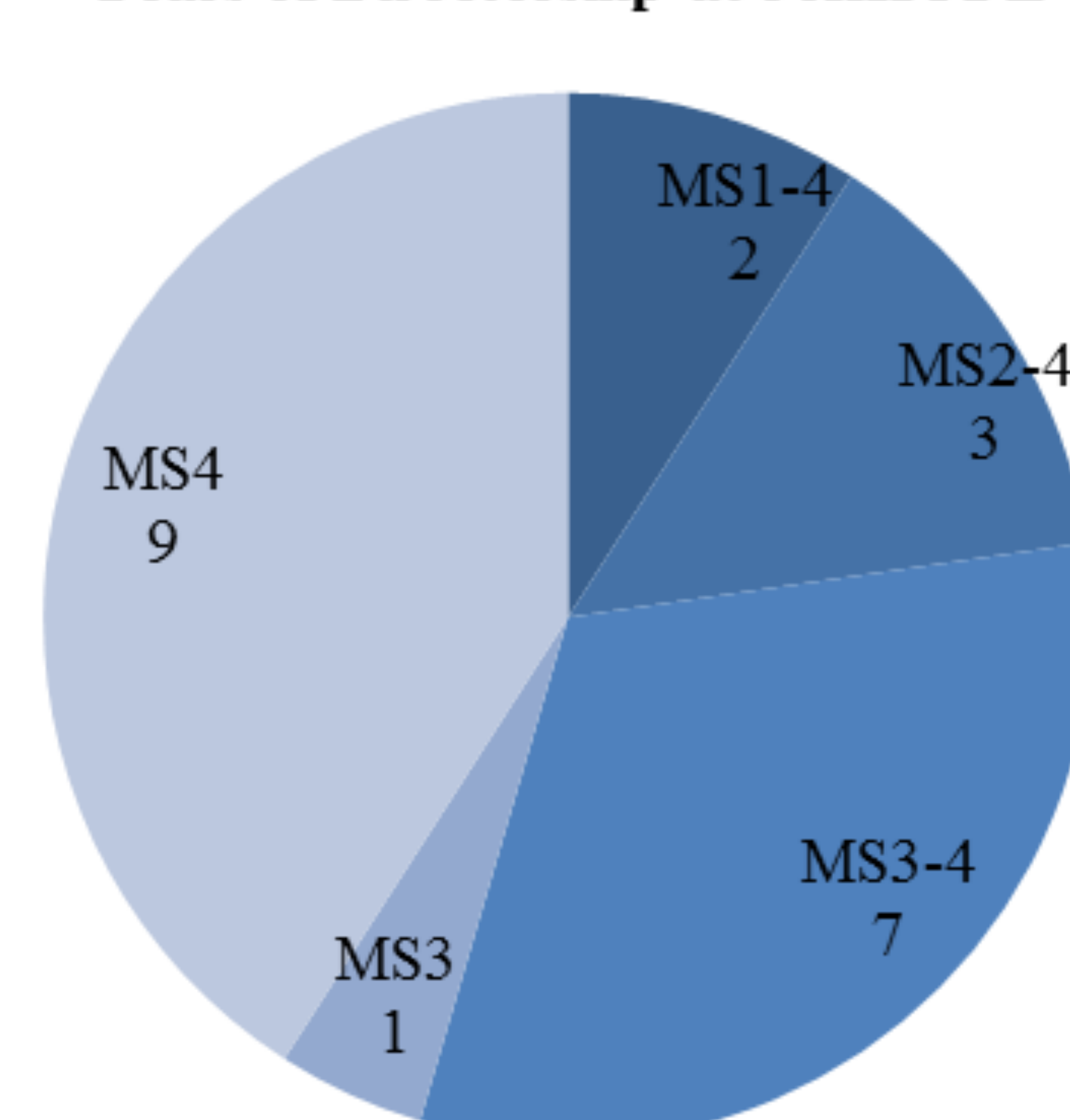
### Who They Are:

JeffHOPE student volunteers operate five clinics at homeless shelters and rehabilitation centers throughout Philadelphia each week. Most students are transitory and volunteer at each of the five clinics interchangeably, while a core group of students make a year-long commitment to staff a specific clinic as a member of one of eight committees: Advocacy, Education, Finance, Pharmacy, Physician Coordinator, Procedures, Research, and Student Coordinator. Committee members are trained to perform designated roles at their clinics, which allows JeffHOPE to offer consistent patient care. Each committee is led by a student director, who also commits to direct one of the five clinics for that year. One student is chosen as the Project Director, responsible for overseeing all operations of the individual committees and serving as the face of JeffHOPE. All directors were eligible for this survey.

Student Interest in Underserved Populations Before Directorship at JeffHOPE



Years of Directorship at JeffHOPE



### Future Directions:

What could have improved your experience as a student director?

*"JeffHOPE has very poor institutional memory. Greater involvement of former leaders in advisory capacities"*

JeffHOPE has recruited a former student director currently practicing at Jefferson to lead a dermatology service at its clinics. Committee members are discussing an advisory board comprised of former student directors practicing in the Philadelphia area.

*"A better system of passing things off one year to the next"*

The Research and Finance Committees plan to create manuals including examples of IRB forms, abstract submissions, and grant applications for future committee members. Advocacy and Education Committees already pass binders down from year to year and plan to revise their resources this year.

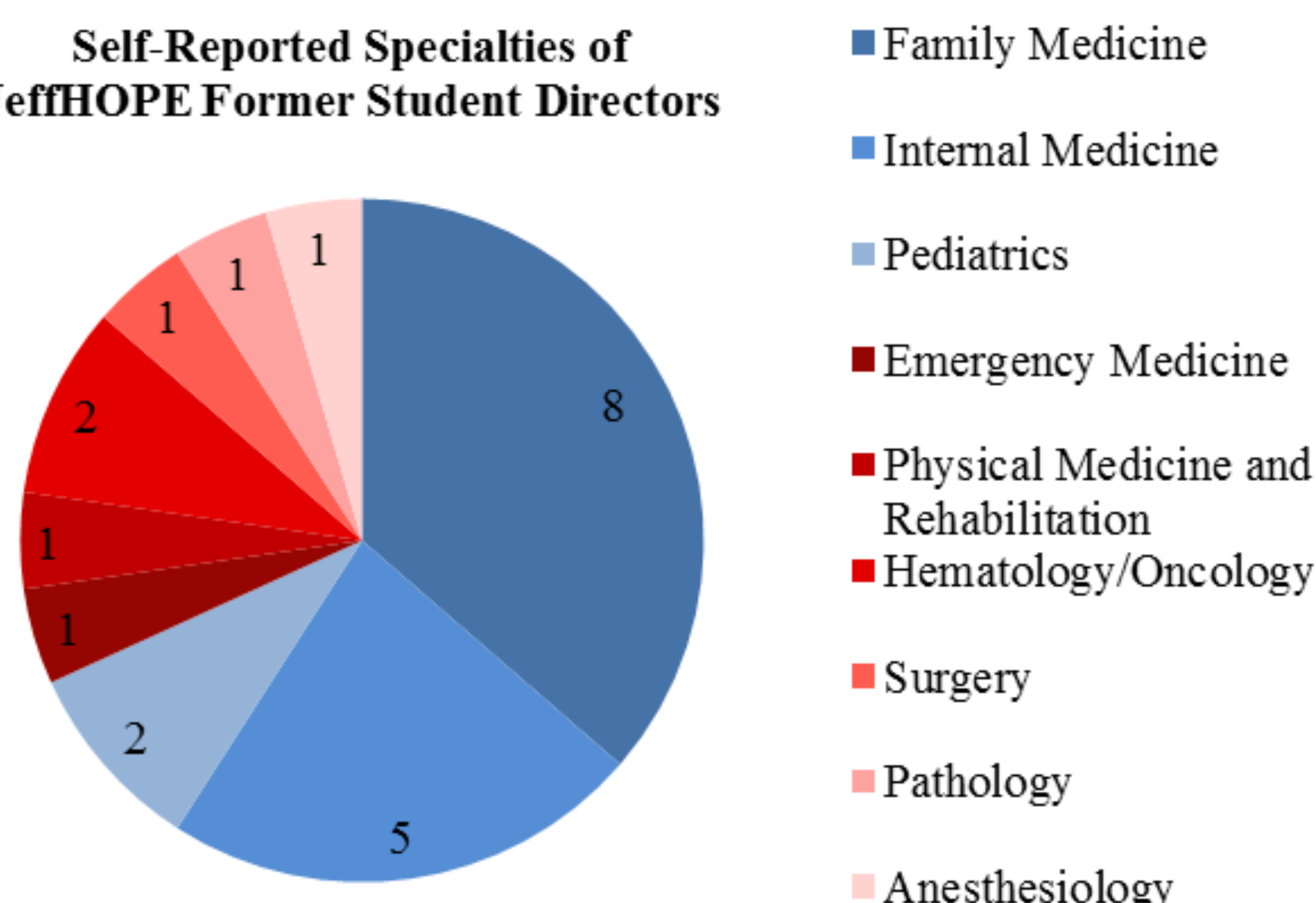
*"More collaborations with other associated health professions"*

JeffHOPE is currently recruiting Masters of Public Health students to work with the Research Committee in identifying the specific needs of our patient population and improving our clinic's quality of care.

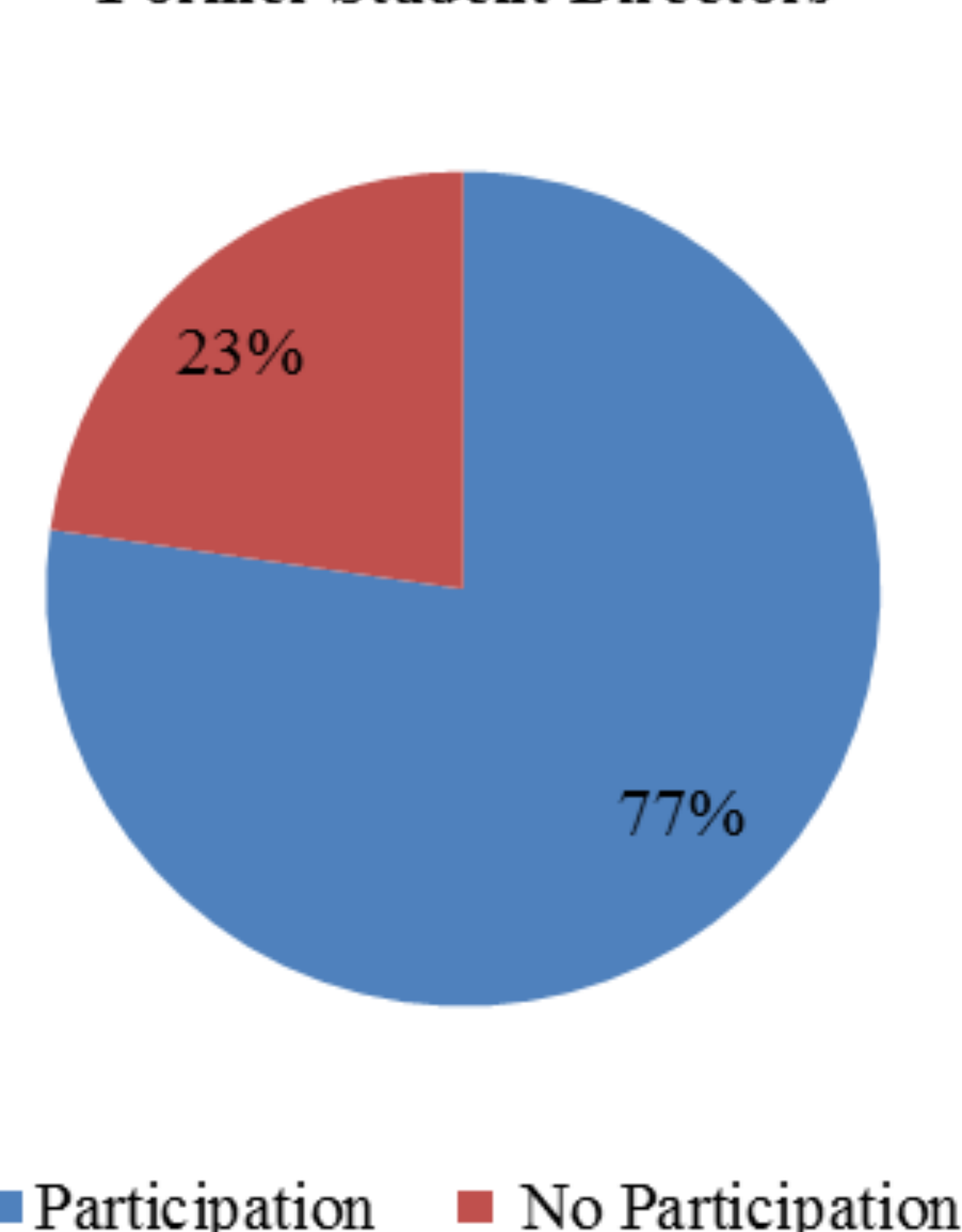
**Define your role as a JeffHOPE Director:** *"Applied for grants and saw that the money was used promptly and appropriately--the business end of JeffHOPE"...* *"Functioned as a primary contact for individuals and organizations outside of JeffHOPE"...* *"Fostered institutional memory"* *"Encouraged physician and student recruitment, and expanded services through collaboration with dental/PT/OT schools"...* *"Ensured that multiple clinical sites were running smoothly and thought about future directions for the organization"...* *"Oversaw committee operations"...*

## NOW....

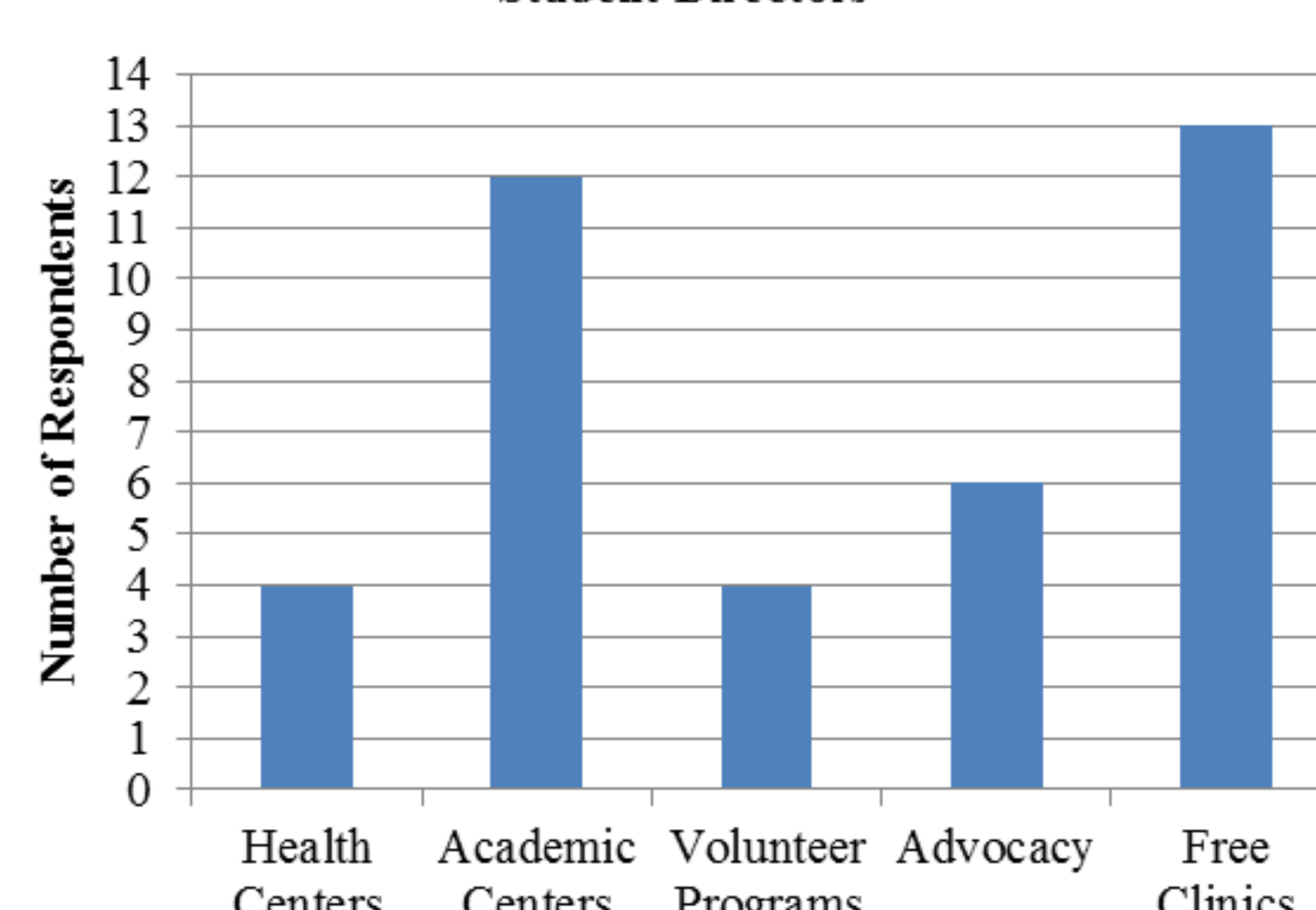
Self-Reported Specialties of JeffHOPE Former Student Directors



Community Involvement of JeffHOPE Former Student Directors



Community Involvement of JeffHOPE Former Student Directors



### Conclusions:

Our survey results proved invaluable in improving the institutional memory of JeffHOPE and soliciting ideas for the future. We also obtained noteworthy information about the former student directors themselves. Of all survey respondents, 68% specialize in primary care and 77% continue to care for the underserved in their communities. Of these 17 respondents, 18% serve at recognized health centers, 50% work at academic centers, and 60% continue to volunteer at free clinics. These results demonstrate a continued commitment to service, supporting JeffHOPE's mission of fostering compassionate physicians and life-long learners.

Future research will qualitatively determine how JeffHOPE has influenced aspects of the former student directors' daily practice. Surveys on physician empathy, personal biases, and doctor-patient relationships may further elucidate how those who made such a difference for others were impacted themselves. The findings of this discussion have implications for SRC recruitment nationwide.

**Final Comments and Thoughts:** *"Nothing prepared me for the hectic hospital schedule like running clinic; it helped me gain so much experience that I still carry with me today"...* *"Definitely influenced even though I did not pursue primary care"...* *"It was an honor and I continue to enjoy precepting at JeffHOPE"...* *"Cannot overstate what a unique and valuable experience JeffHOPE has been to my education as a physician...[allowed me] to become comfortable and understand a population that is usually misunderstood and thus distrusts the medical community."*