

Winter 2020

## Mask Use: Pros & Cons

Megan Carty

Thomas Jefferson University, [megan.carty@students.jefferson.edu](mailto:megan.carty@students.jefferson.edu)

Megan Donlick

Thomas Jefferson University, [megan.donlick@students.jefferson.edu](mailto:megan.donlick@students.jefferson.edu)

Yuri Matsubara

Thomas Jefferson University, [yuri.matsubara@students.jefferson.edu](mailto:yuri.matsubara@students.jefferson.edu)

Janine Tobia

Thomas Jefferson University, [janine.tobia@students.jefferson.edu](mailto:janine.tobia@students.jefferson.edu)

Follow this and additional works at: <https://jdc.jefferson.edu/mphprojects>



Part of the [Infectious Disease Commons](#), and the [Public Health Commons](#)

[Let us know how access to this document benefits you](#)

---

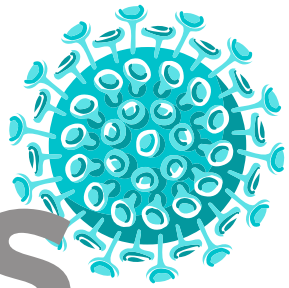
### Recommended Citation

Carty, Megan; Donlick, Megan; Matsubara, Yuri; and Tobia, Janine, "Mask Use: Pros & Cons" (2020). *Foundations of Public Health - Infographics*. Paper 3.

<https://jdc.jefferson.edu/mphprojects/3>

This Article is brought to you for free and open access by the Jefferson Digital Commons. The Jefferson Digital Commons is a service of Thomas Jefferson University's [Center for Teaching and Learning \(CTL\)](#). The Commons is a showcase for Jefferson books and journals, peer-reviewed scholarly publications, unique historical collections from the University archives, and teaching tools. The Jefferson Digital Commons allows researchers and interested readers anywhere in the world to learn about and keep up to date with Jefferson scholarship. This article has been accepted for inclusion in Foundations of Public Health - Infographics by an authorized administrator of the Jefferson Digital Commons. For more information, please contact: [JeffersonDigitalCommons@jefferson.edu](mailto:JeffersonDigitalCommons@jefferson.edu).

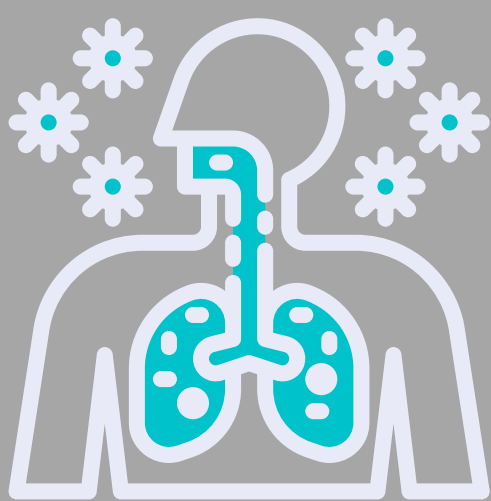
# MASK USE PROS & CONS



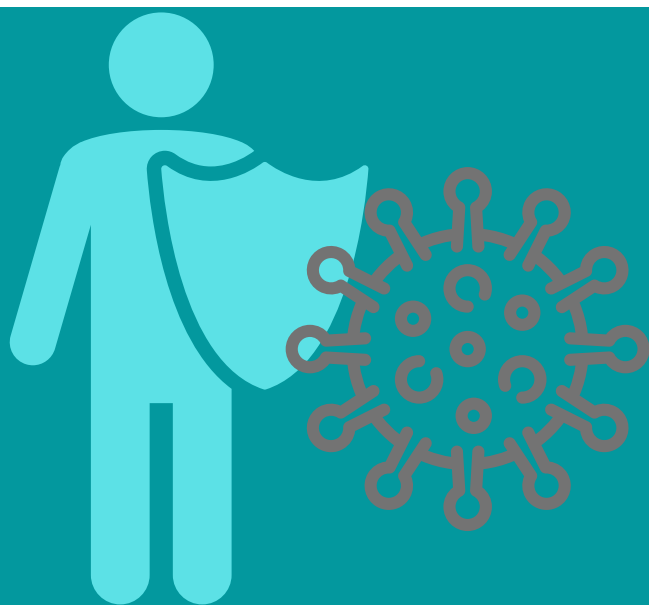
MASKS PREVENT THE SPREAD OF COVID-19



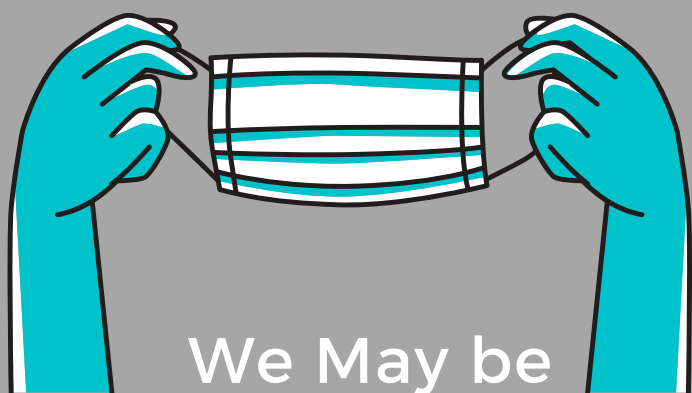
## GO WITH THE PRO!



We may find it **HARD**  
**TO BREATHE...**

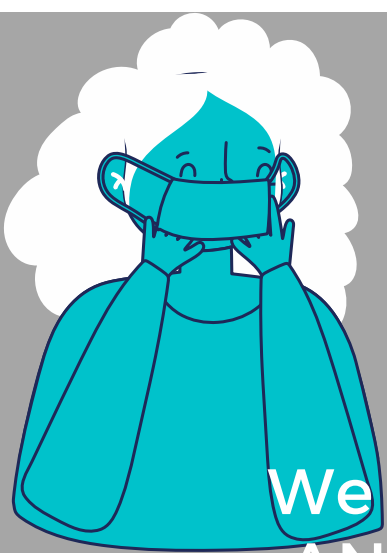


...but it is **SAFER** for all



We May be  
**UNCOMFORTABLE...**

...but we are  
**PROTECTING** each  
other



We might be  
**ANNOYED...**



...but it is **NECESSARY**  
to trust the **SCIENCE**



We may disagree on  
our **POLITICS...**

...but not on our  
**RESPONSIBILITY** to  
others.



## WEAR THAT MASK

References:

Centers for Disease Control and Prevention (CDC). (2020, July 14). CDC calls on Americans to wear masks to prevent COVID-19 spread. <https://www.cdc.gov/media/releases/2020/p0714-americans-to-wearmasks.html>