
On the anatomy of the breast, by Sir Astley
Paston Cooper, 1840

Rare Medical Books

1840

On the anatomy of the breast - Plate II: Showing first the size of the gland at different ages

Sir Astley Paston Cooper , Bart.

Follow this and additional works at: <https://jdc.jefferson.edu/cooper>



Part of the [History of Science, Technology, and Medicine Commons](#)

[Let us know how access to this document benefits you](#)

Recommended Citation

Cooper, Sir Astley Paston , Bart., "On the anatomy of the breast - Plate II: Showing first the size of the gland at different ages" (1840). *On the anatomy of the breast, by Sir Astley Paston Cooper, 1840*. Paper 12.

<https://jdc.jefferson.edu/cooper/12>

This Article is brought to you for free and open access by the Jefferson Digital Commons. The Jefferson Digital Commons is a service of Thomas Jefferson University's [Center for Teaching and Learning \(CTL\)](#). The Commons is a showcase for Jefferson books and journals, peer-reviewed scholarly publications, unique historical collections from the University archives, and teaching tools. The Jefferson Digital Commons allows researchers and interested readers anywhere in the world to learn about and keep up to date with Jefferson scholarship. This article has been accepted for inclusion in *On the anatomy of the breast, by Sir Astley Paston Cooper, 1840* by an authorized administrator of the Jefferson Digital Commons. For more information, please contact: JeffersonDigitalCommons@jefferson.edu.

PL. II.

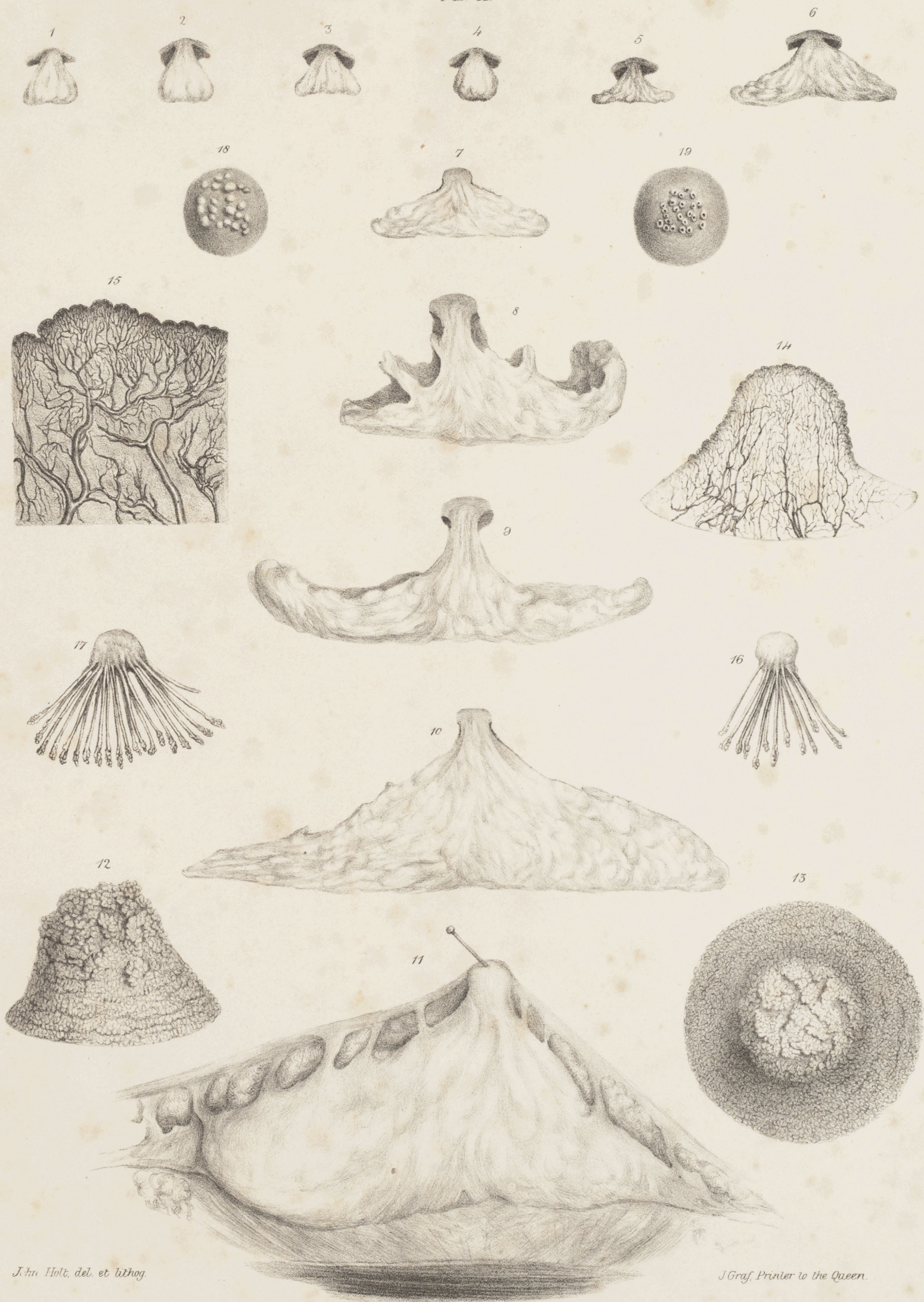


PLATE II.

Showing First the Size of the Gland at Different Ages.

- Fig. 1. The gland at the age of eleven months.
- Fig. 2. At three years.
- Fig. 3. At four years.
- Fig. 4. At six years.
- Fig. 5. At nine years. The size of the gland rather decreased until the ninth year, in those subjects which I examined.
- Fig. 6. At eleven years. Sudden increase.
- Fig. 7. At twelve years. Larger gland.
- Fig. 8. At thirteen years. Gland greatly enlarged, turned at its extremities, forming folds upon its surface.
- Fig. 9. At fourteen years. Diameter of the gland greatly enlarged.
- Fig. 10. At sixteen years. Gland very much increased. In all the preceding figures the fascia is removed.
- Fig. 11. A section of the breast at twenty years of age, showing the skin, the fascia, the ligamenta suspensoria, and the fat between them.
- Fig. 12. The papillæ of the nipple (magnified to double their natural dimensions,) showing their foliated appearance towards their summits, and the circles which they form towards the areola.
- Fig. 13. The same in a front view of the nipple and areola, showing the foliated appearance of the papillæ, and the numerous, but smaller papillæ of the areola, magnified twice.
- Fig. 14. The arteries of the nipple (twice magnified), terminating in veins in the papillæ.

- Fig. 15. The branches of the veins in the papillæ twelve times magnified. They form an immense number of very minute branches, which pass into the larger branches of veins.
- Fig. 16. The nipple, and the straight ducts, in number thirteen.
- Fig. 17. The nipple and the straight ducts, twenty-one in number.
- Fig. 18. Inside of the nipple with what appear to be ducts cut off, twenty-three in number.
- Fig. 19. Section of the ducts, twenty-four in number, behind the nipple. I believe them to be ducts, but some of them may be follicles.
- .