

8-8-2013

The Conception of GCC- Specific Chimeric Antigen Receptors

Raven Smith-Parris

Cheyney University, rsparris66@wolf.cheyney.edu

Follow this and additional works at: <https://jdc.jefferson.edu/summercancerimmunotherapy>

 Part of the [Medical Immunology Commons](#)

[Let us know how access to this document benefits you](#)

Recommended Citation

Smith-Parris, Raven, "The Conception of GCC- Specific Chimeric Antigen Receptors" (2013).
Summer Training Program in Cancer Immunotherapy. Presentation 6.
<https://jdc.jefferson.edu/summercancerimmunotherapy/6>

This Article is brought to you for free and open access by the Jefferson Digital Commons. The Jefferson Digital Commons is a service of Thomas Jefferson University's [Center for Teaching and Learning \(CTL\)](#). The Commons is a showcase for Jefferson books and journals, peer-reviewed scholarly publications, unique historical collections from the University archives, and teaching tools. The Jefferson Digital Commons allows researchers and interested readers anywhere in the world to learn about and keep up to date with Jefferson scholarship. This article has been accepted for inclusion in Summer Training Program in Cancer Immunotherapy by an authorized administrator of the Jefferson Digital Commons. For more information, please contact: JeffersonDigitalCommons@jefferson.edu.

THE ROLE OF
T-CELL THERAPY
WITHIN
COLORECTAL CANCER

By: Raven Smith-Parris

&

PhD. Candidate Michael Magee

Dr. Scott Waldman's Lab

COLORECTAL CANCER

Leading New Cancer Cases and Deaths – 2012 Estimates

Estimated New Cases*

Male	Female
Prostate 241,740 (29%)	Breast 226,870 (29%)
Lung & bronchus 116,470 (14%)	Lung & bronchus 109,690 (14%)
Colon & rectum 73,420 (9%)	Colon & rectum 70,040 (9%)
Urinary bladder 55,600 (7%)	Uterine corpus 47,130 (6%)
Melanoma of the skin 44,250 (5%)	Thyroid 43,210 (5%)
Kidney & renal pelvis 40,250 (5%)	Melanoma of the skin 32,000 (4%)
Non-Hodgkin lymphoma 38,160 (4%)	Non-Hodgkin lymphoma 31,970 (4%)
Oral cavity & pharynx 28,540 (3%)	Kidney & renal pelvis 24,520 (3%)
Leukemia 26,830 (3%)	Ovary 22,280 (3%)
Pancreas 22,090 (3%)	Pancreas 21,830 (3%)
All sites 848,170 (100%)	All sites 790,740 (100%)

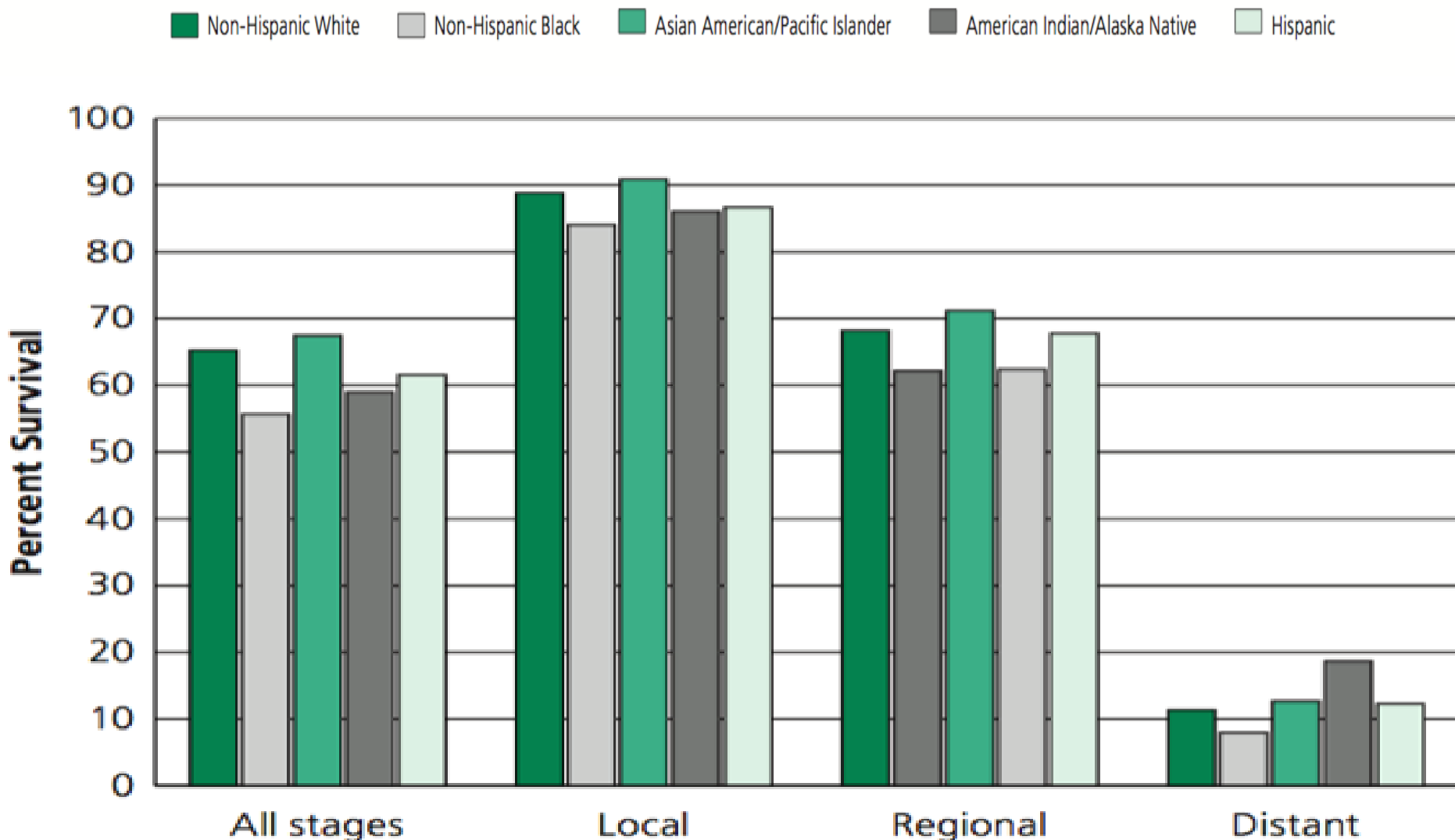
Estimated Deaths

Male	Female
Lung & bronchus 87,750 (29%)	Lung & bronchus 72,590 (26%)
Prostate 28,170 (9%)	Breast 39,510 (14%)
Colon & rectum 26,470 (9%)	Colon & rectum 25,220 (9%)
Pancreas 18,850 (6%)	Pancreas 18,540 (7%)
Liver & intrahepatic bile duct 13,980 (5%)	Ovary 15,500 (6%)
Leukemia 13,500 (4%)	Leukemia 10,040 (4%)
Esophagus 12,040 (4%)	Non-Hodgkin lymphoma 8,620 (3%)
Urinary bladder 10,510 (3%)	Uterine corpus 8,010 (3%)
Non-Hodgkin lymphoma 10,320 (3%)	Liver & intrahepatic bile duct 6,570 (2%)
Kidney & renal pelvis 8,650 (3%)	Brain & other nervous system 5,980 (2%)
All sites 301,820 (100%)	All sites 275,370 (100%)

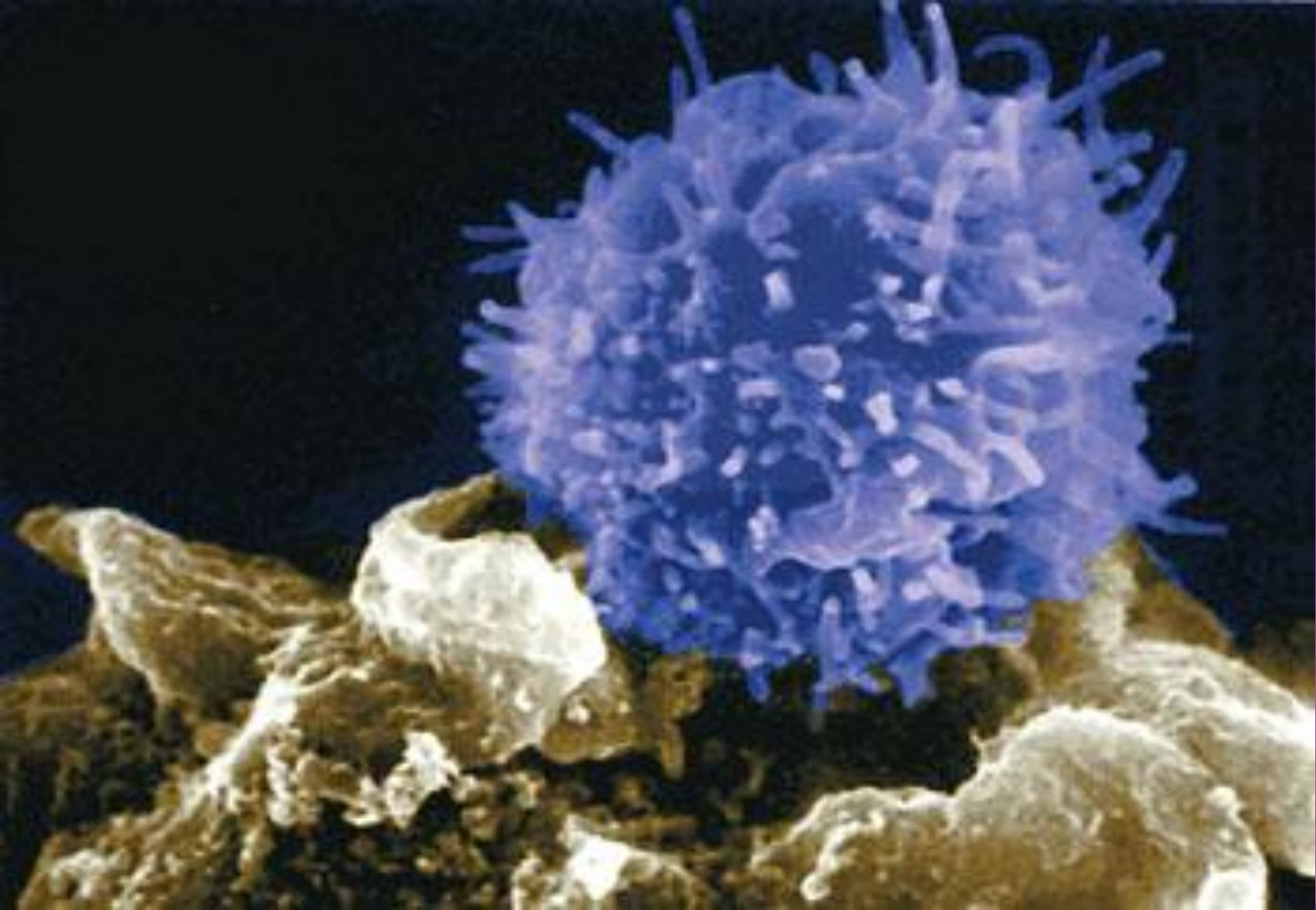
*Excludes basal and squamous cell skin cancers and in situ carcinoma except urinary bladder.

COLORECTAL CANCER STATISTICS

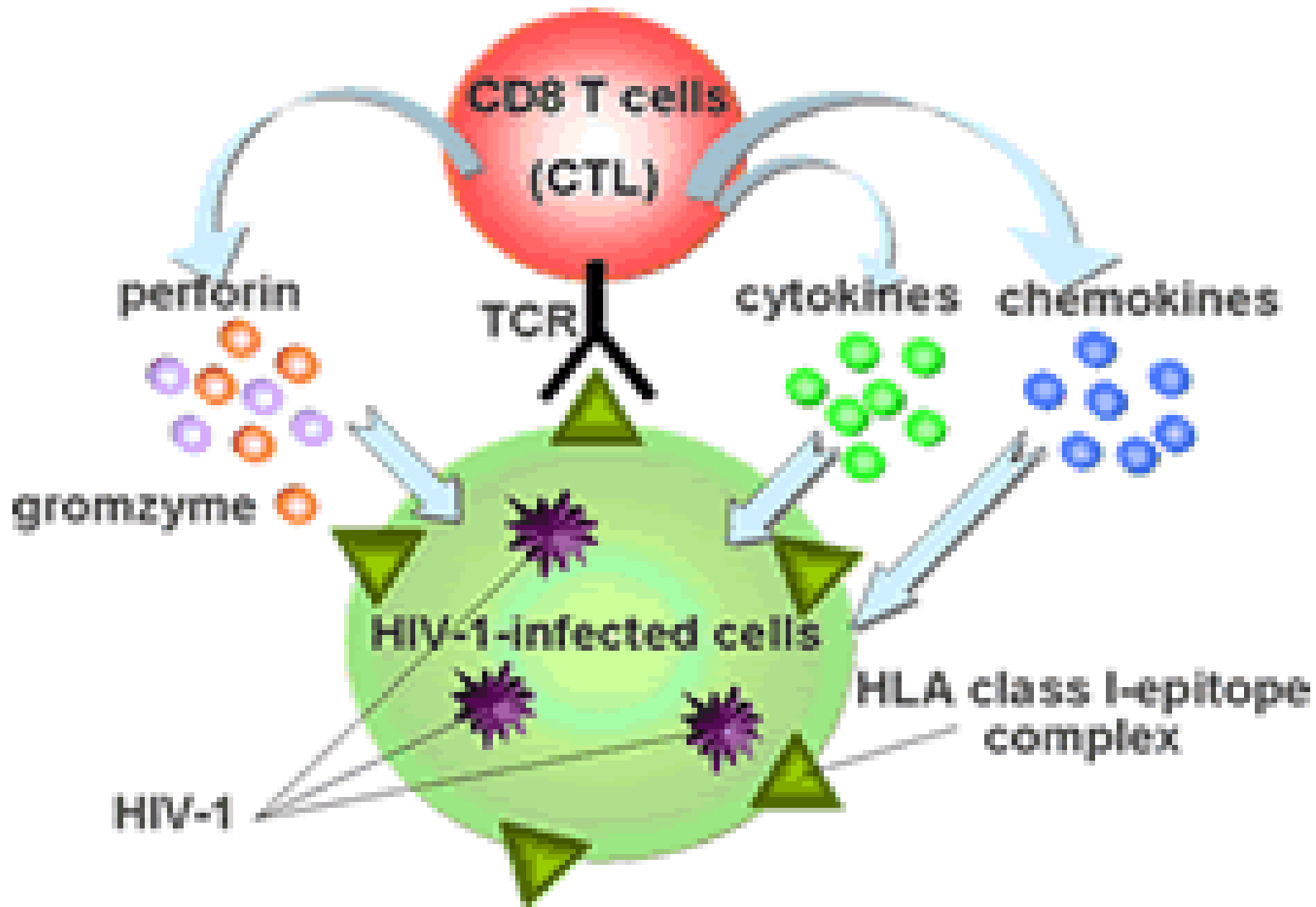
Figure 6. Five-year Colorectal Cancer-specific Survival* by Stage and Race/Ethnicity, 1999-2006



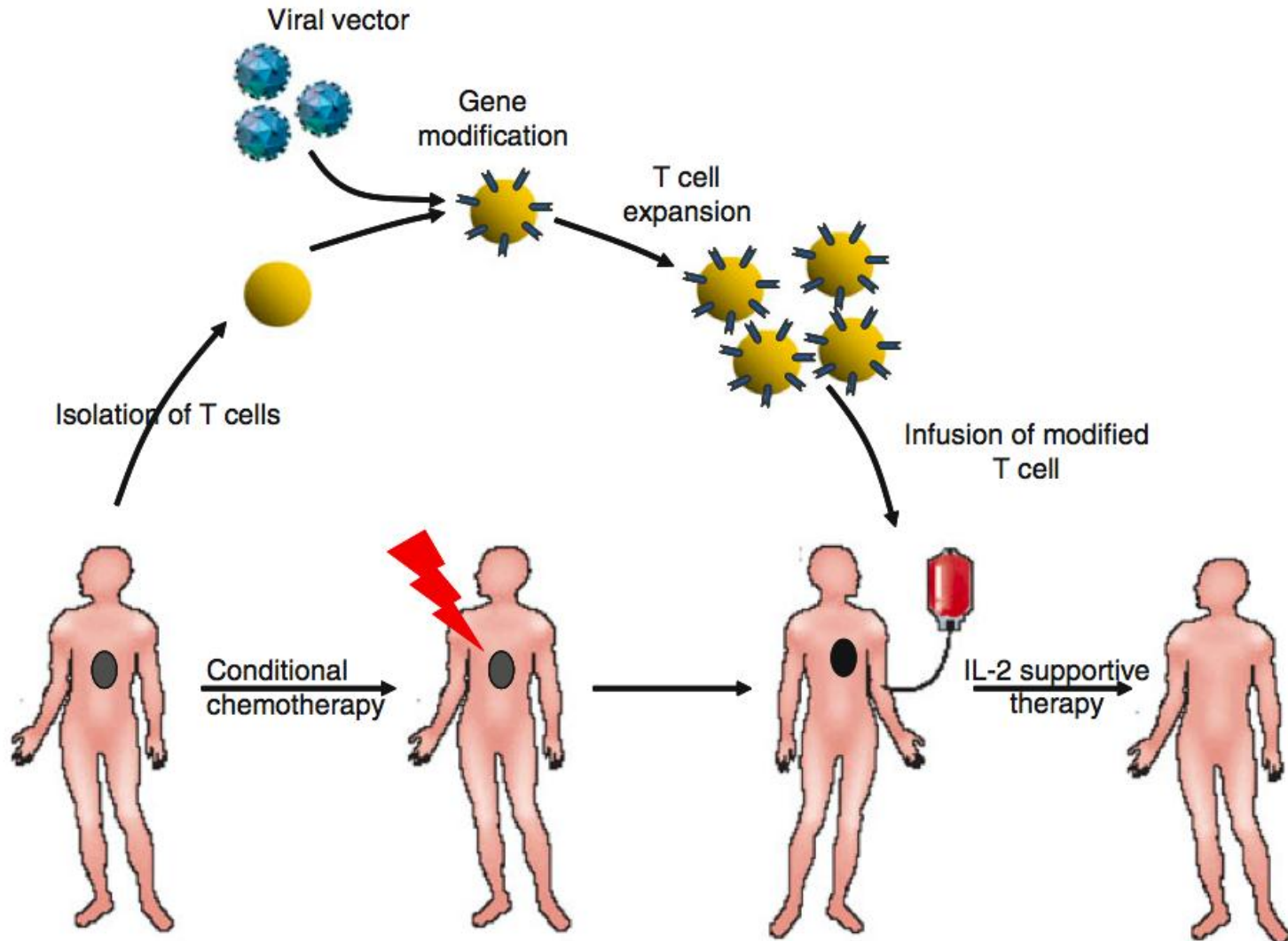
WHAT ARE T-CELLS?



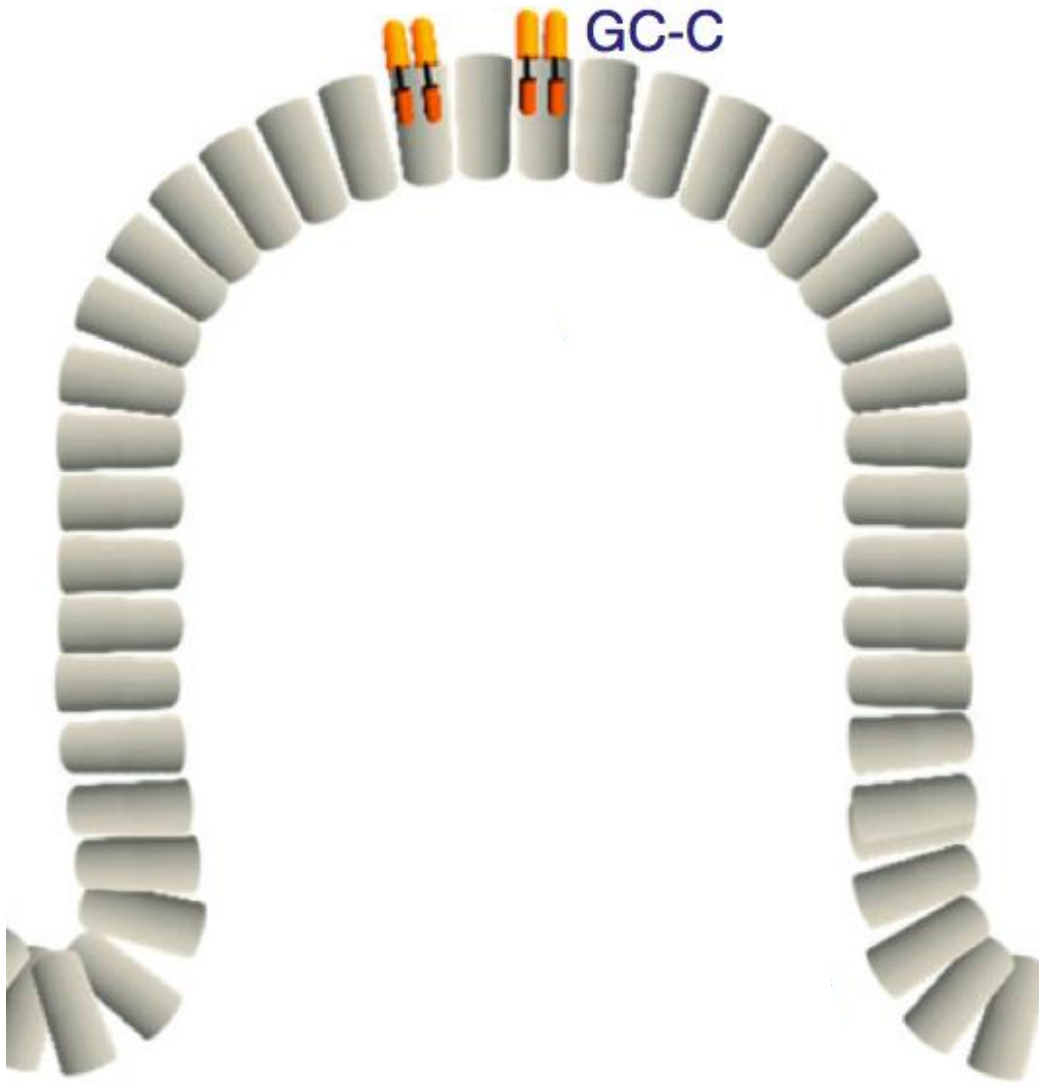
CD8 T-CELLS



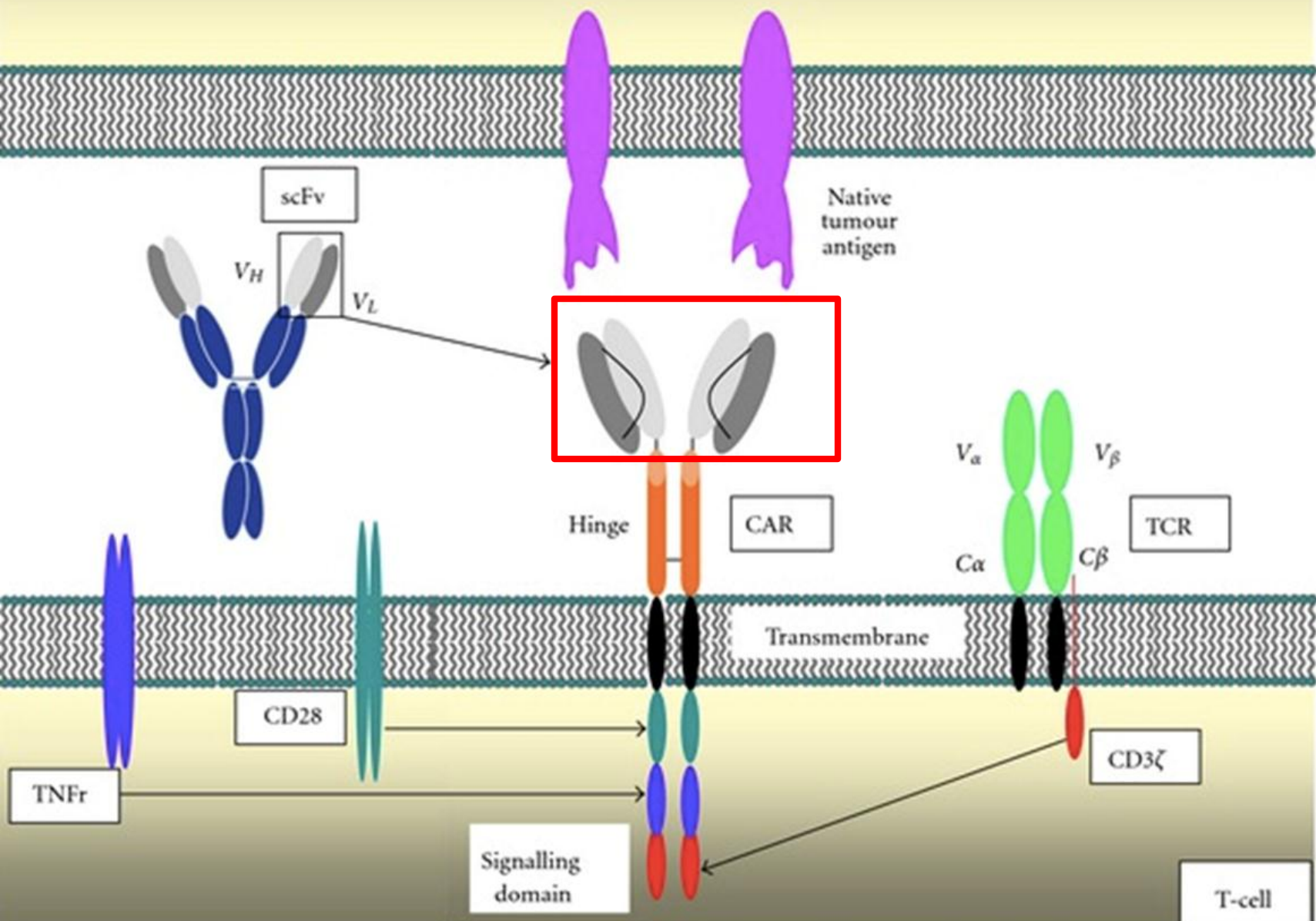
ADOPTIVE T-CELL THERAPY



GUANYLYL CYCLASE C (GCC)

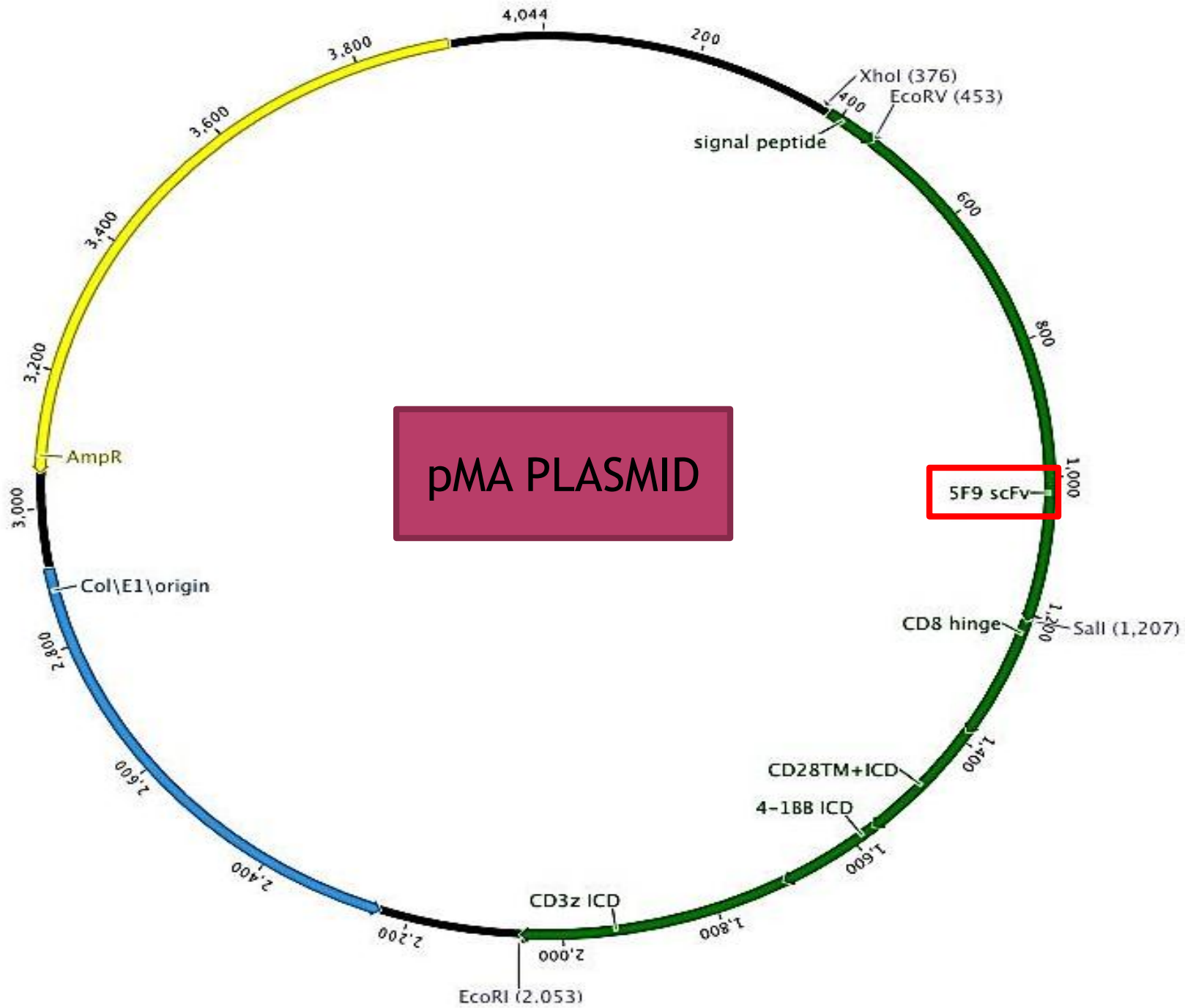


CHIMERIC ANTIGEN RECEPTORS

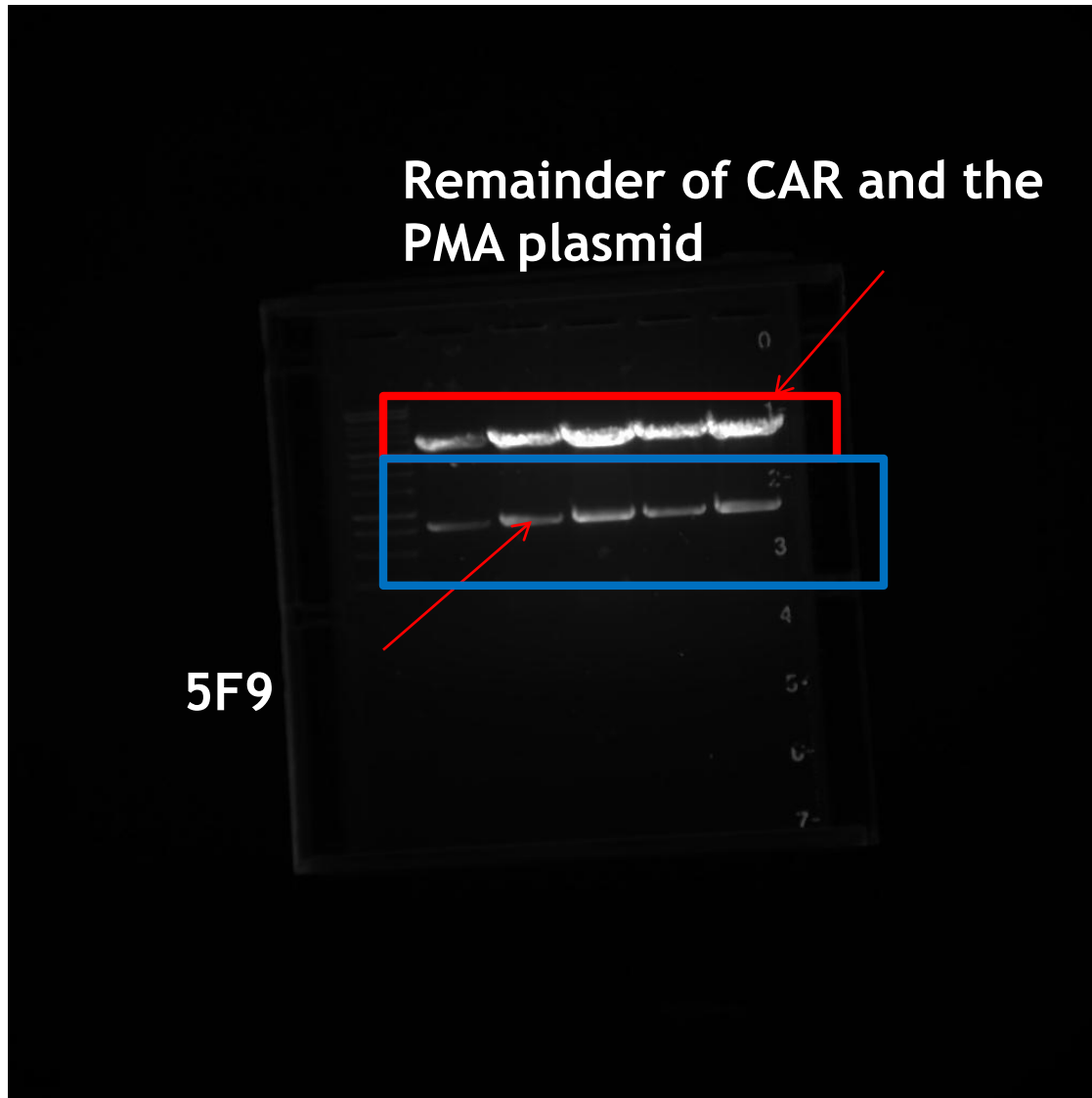


OVERVIEW

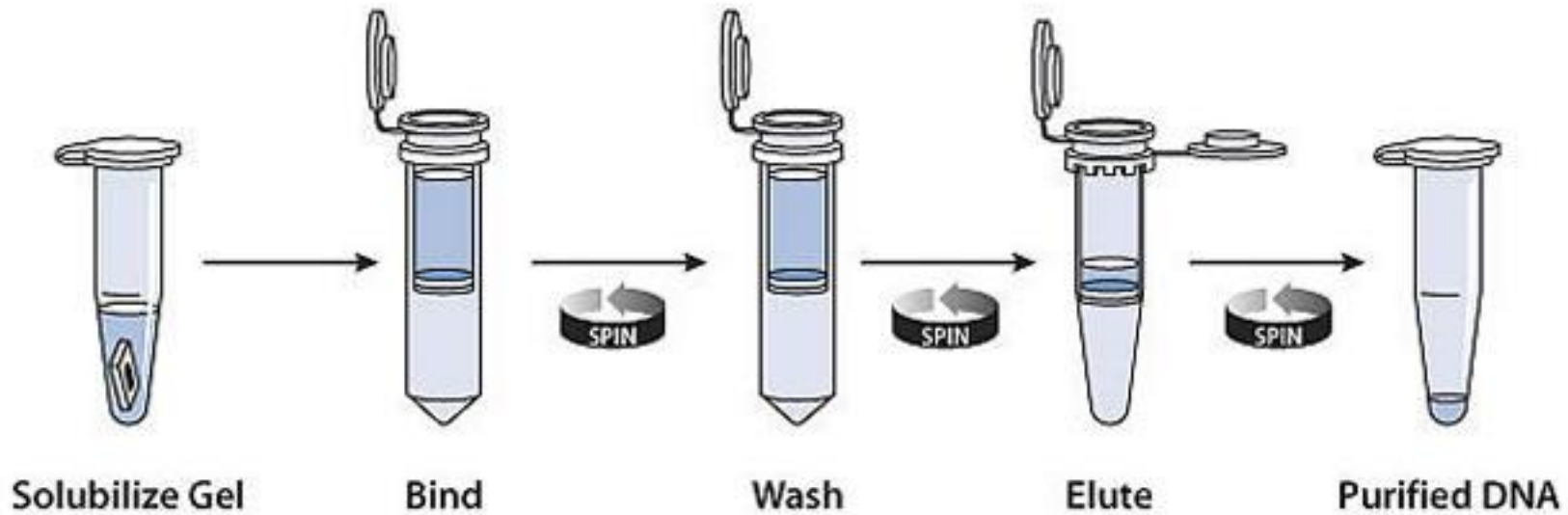
- Create 12 CAR PMA PLASMIDS
 - Abx012
 - Abx020
 - Abx106
 - Abx198
 - Abx221
 - Abx229
 - Abx338
 - Abx393
 - 6H8
 - 8C2
 - 10C10
 - 10D3
- Transfer CAR's to retroviral (MIG) plasmid
- Transduce T-cells with retrovirus to obtain T-cells expressing CAR DNA
- T-cell activation



DIGESTION REACTION



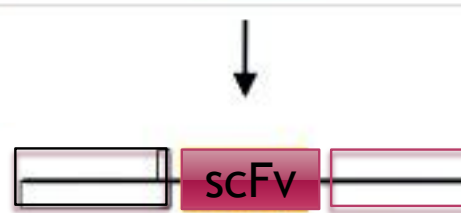
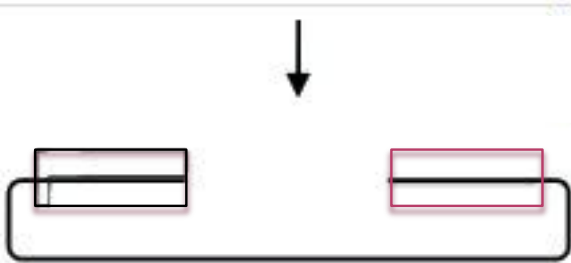
GEL EXTRACTION



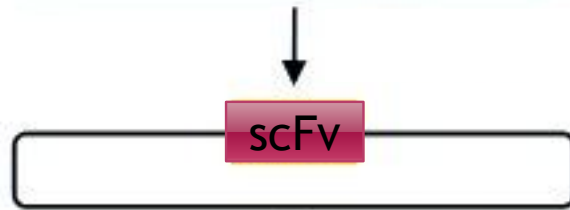
GENEART ASSEMBLY

Open CAR-pMA plasmid

scFv DNA String



GeneArt Rxn (15bp overlap)

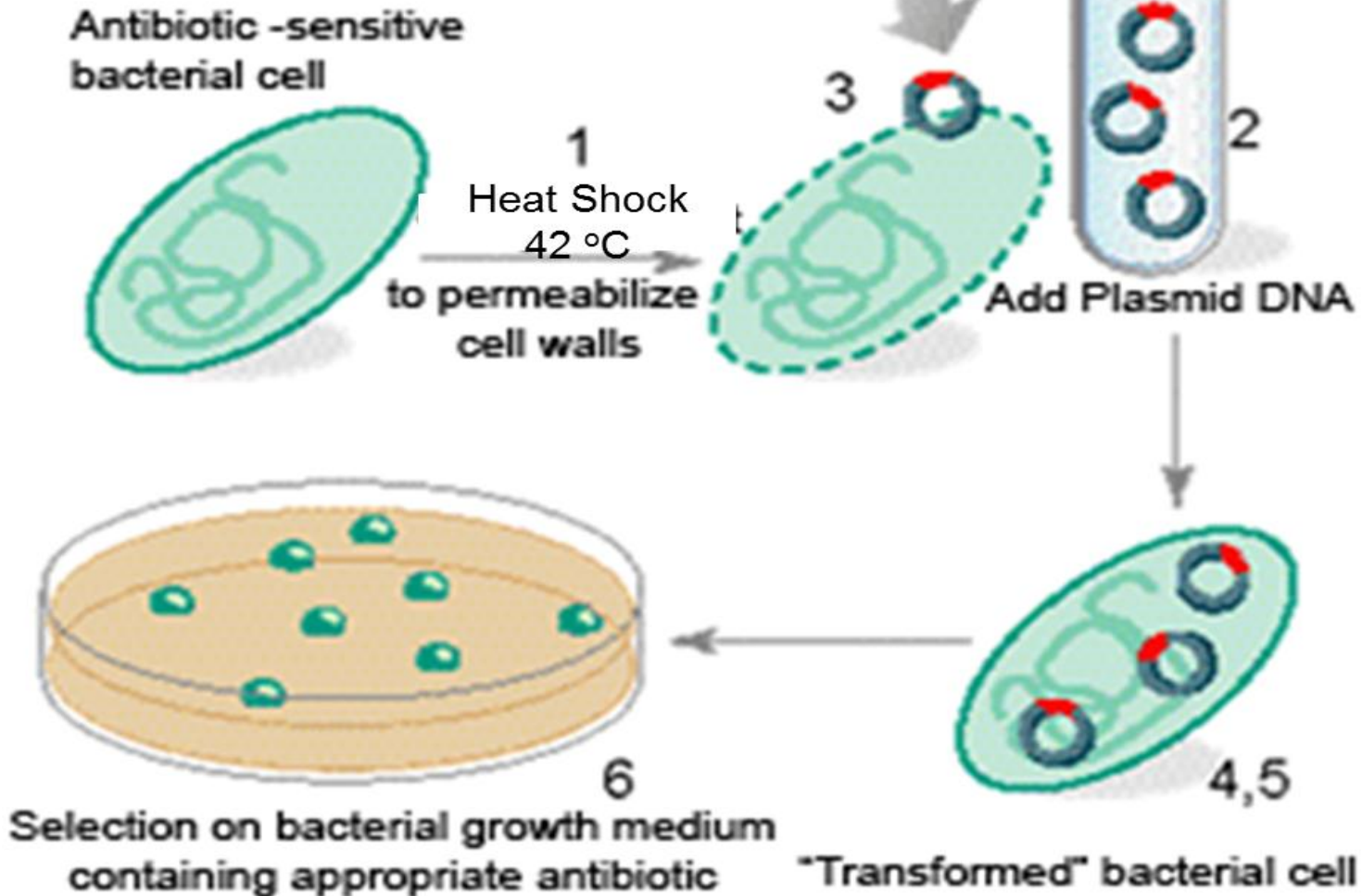


New scFv-CAR-pMA plasmid

Transformation

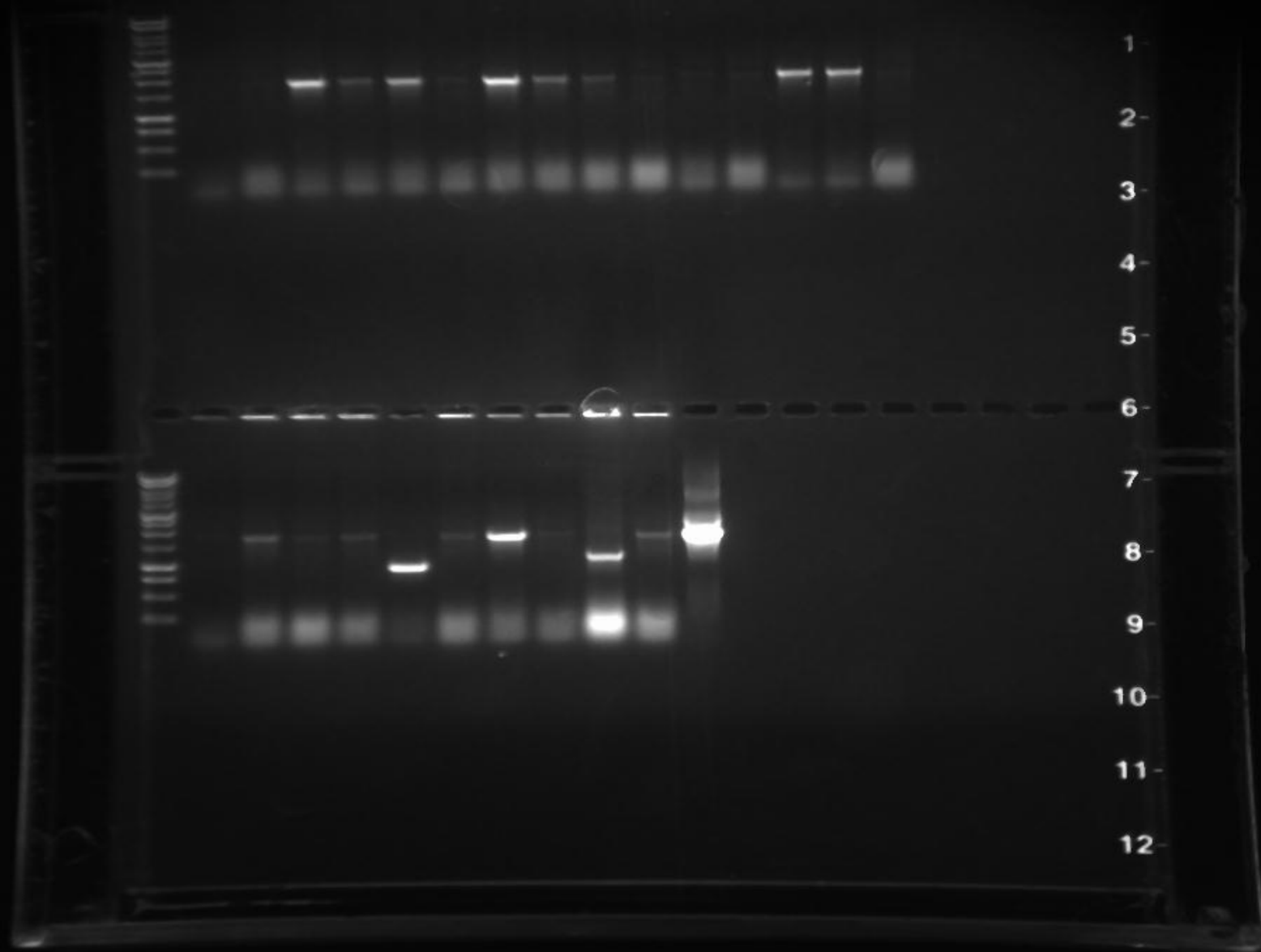
TRANSFORMATION REACTION

Artificial Transformation

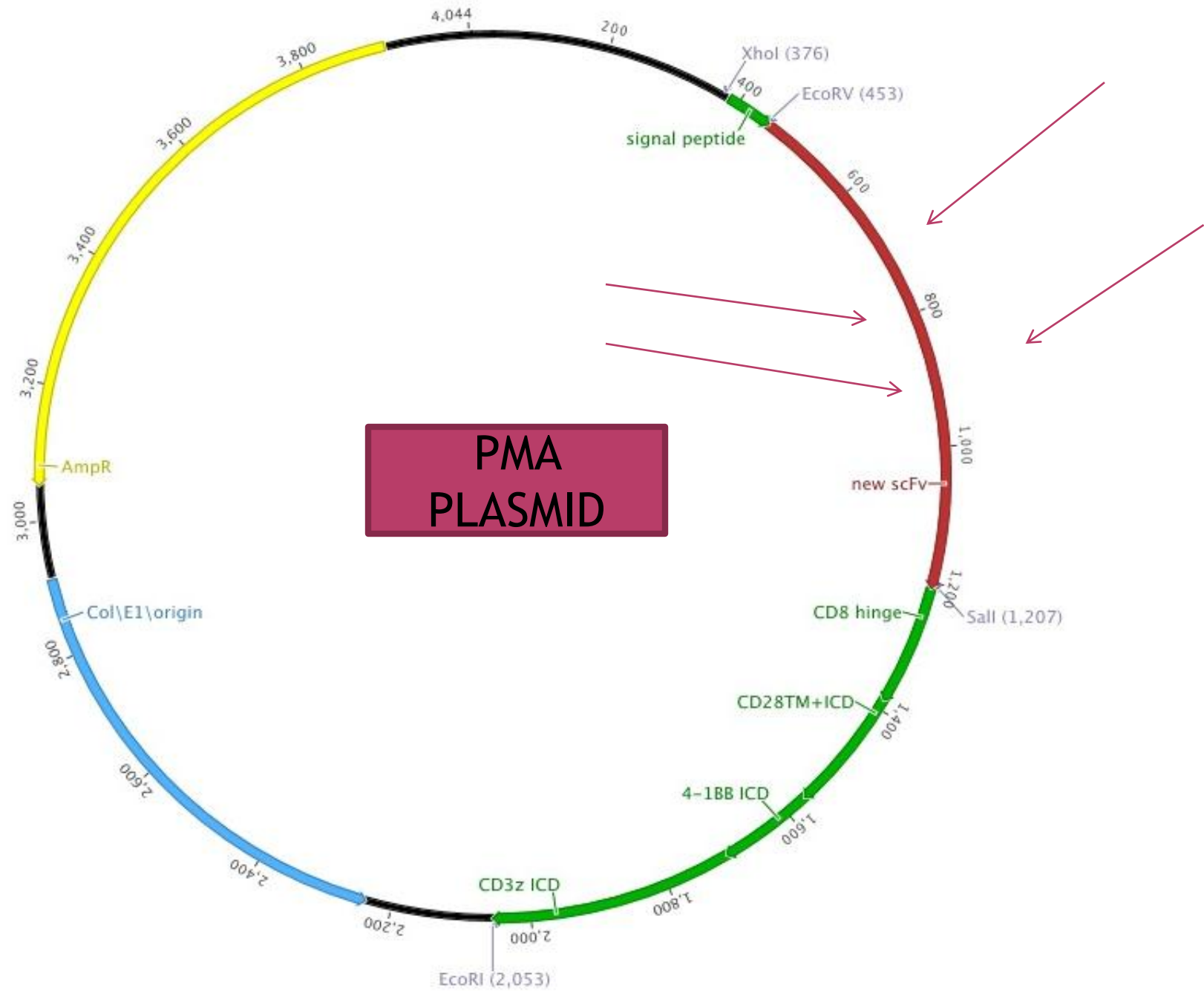


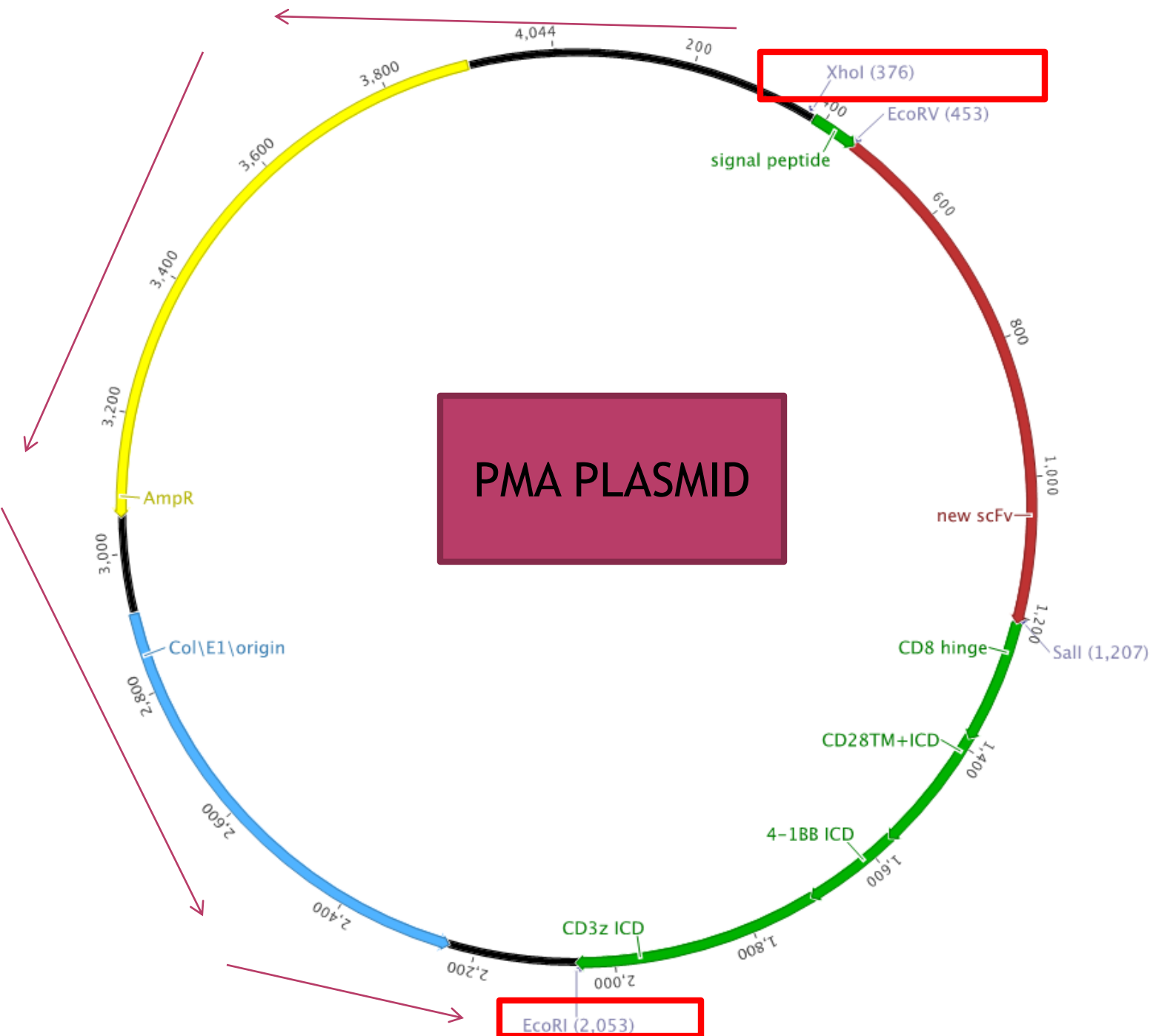


PCR SCREEN

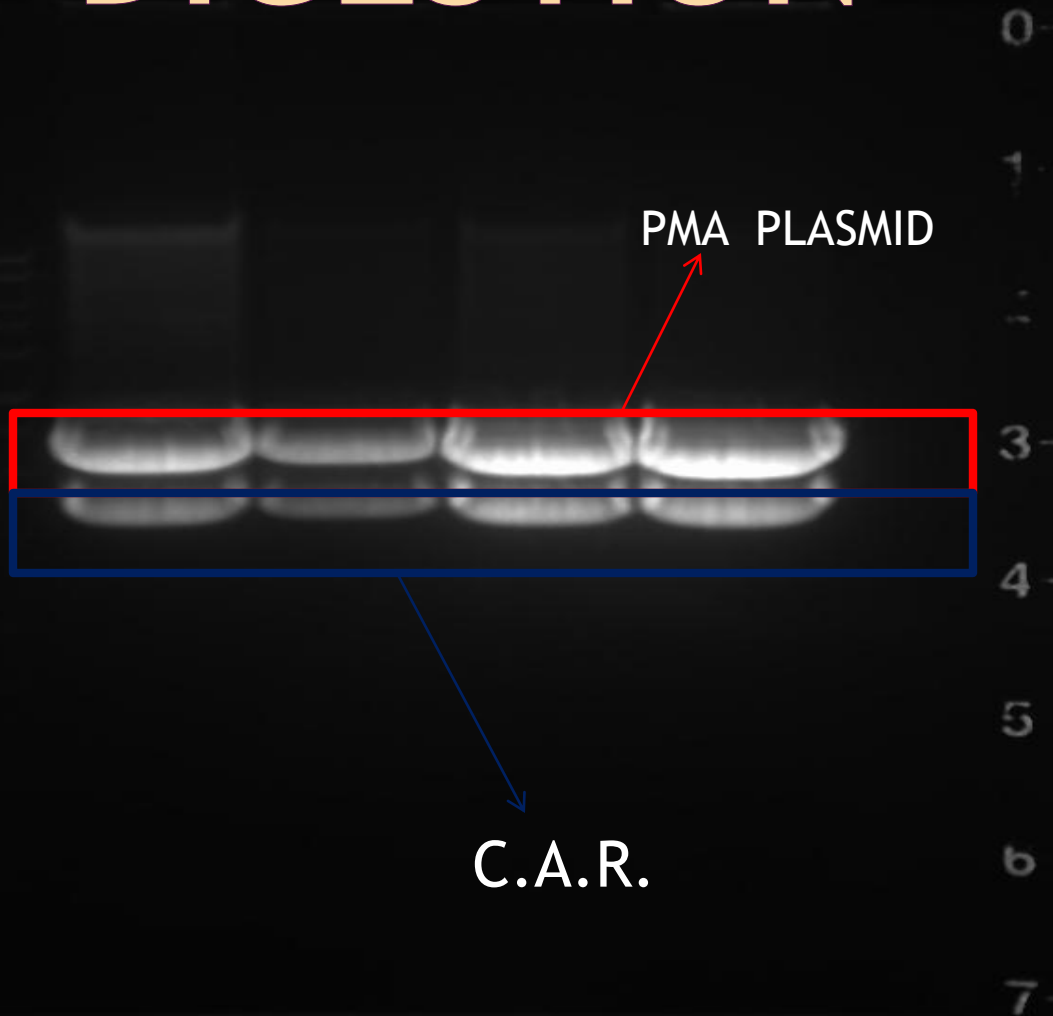


PMA PLASMID

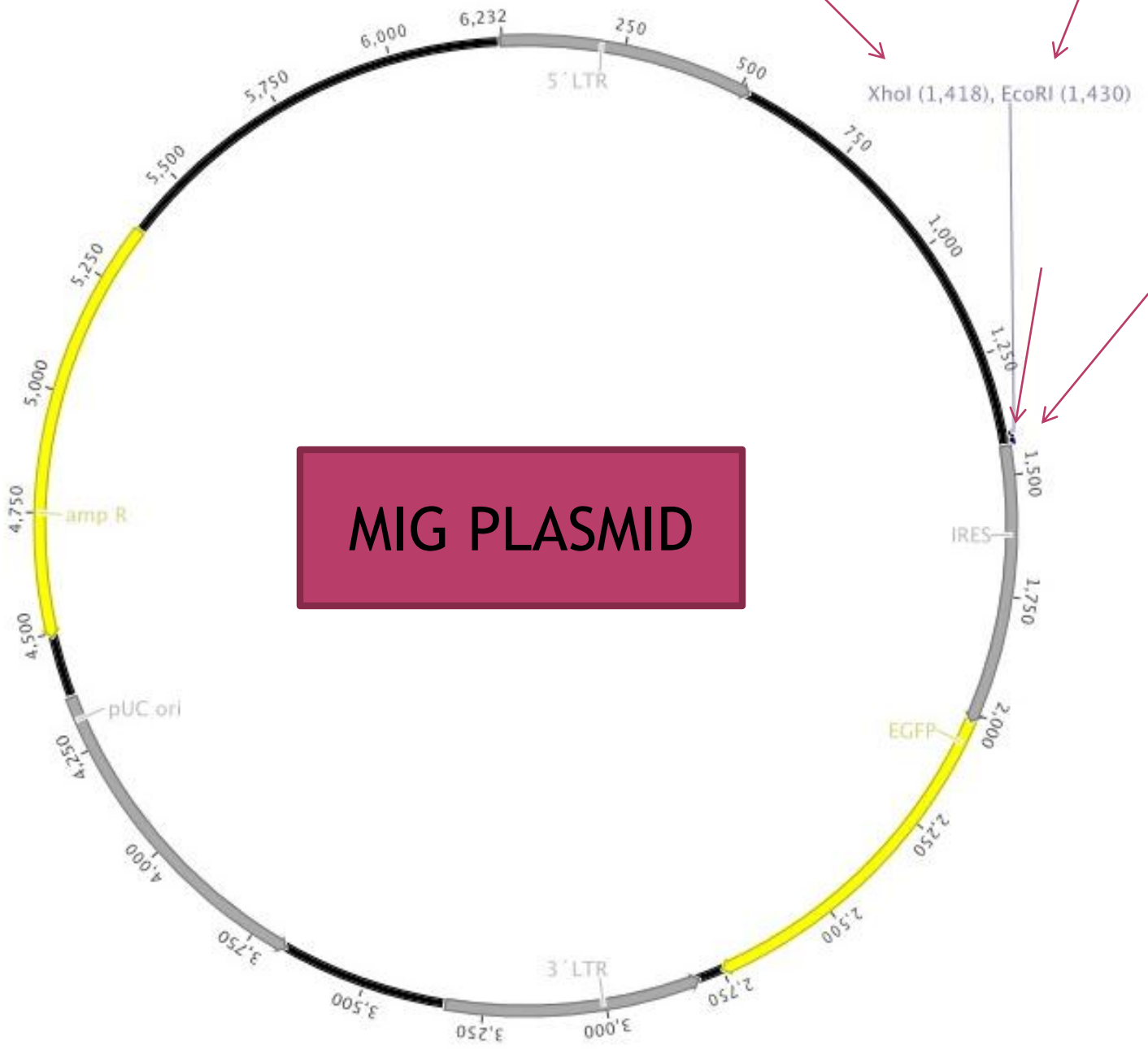




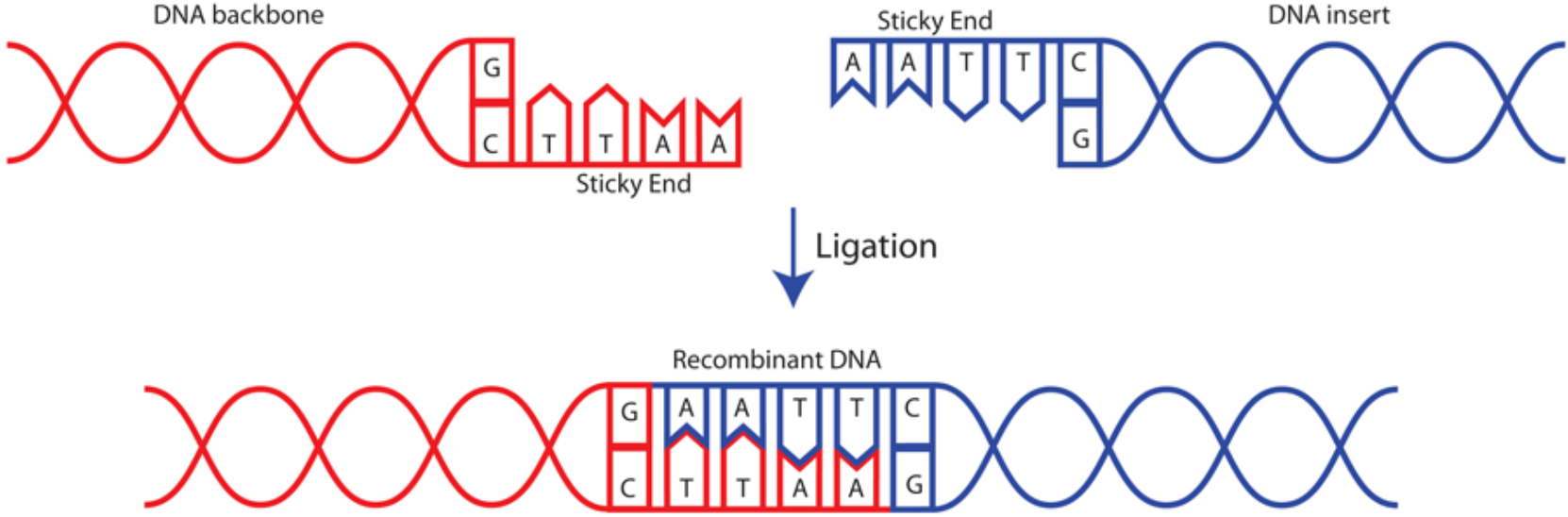
DIGESTION



MIG PLASMID

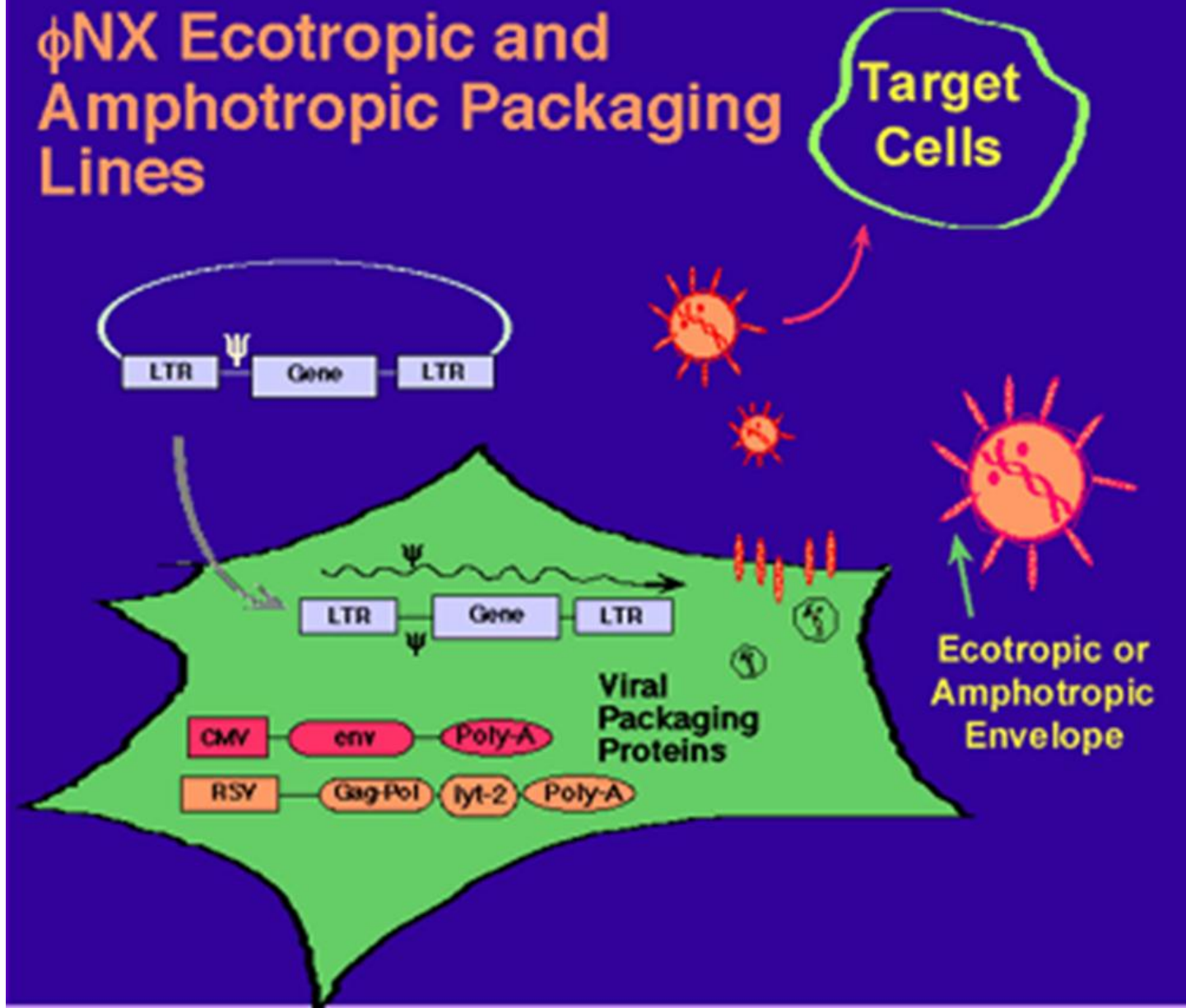


DNA LIGATION

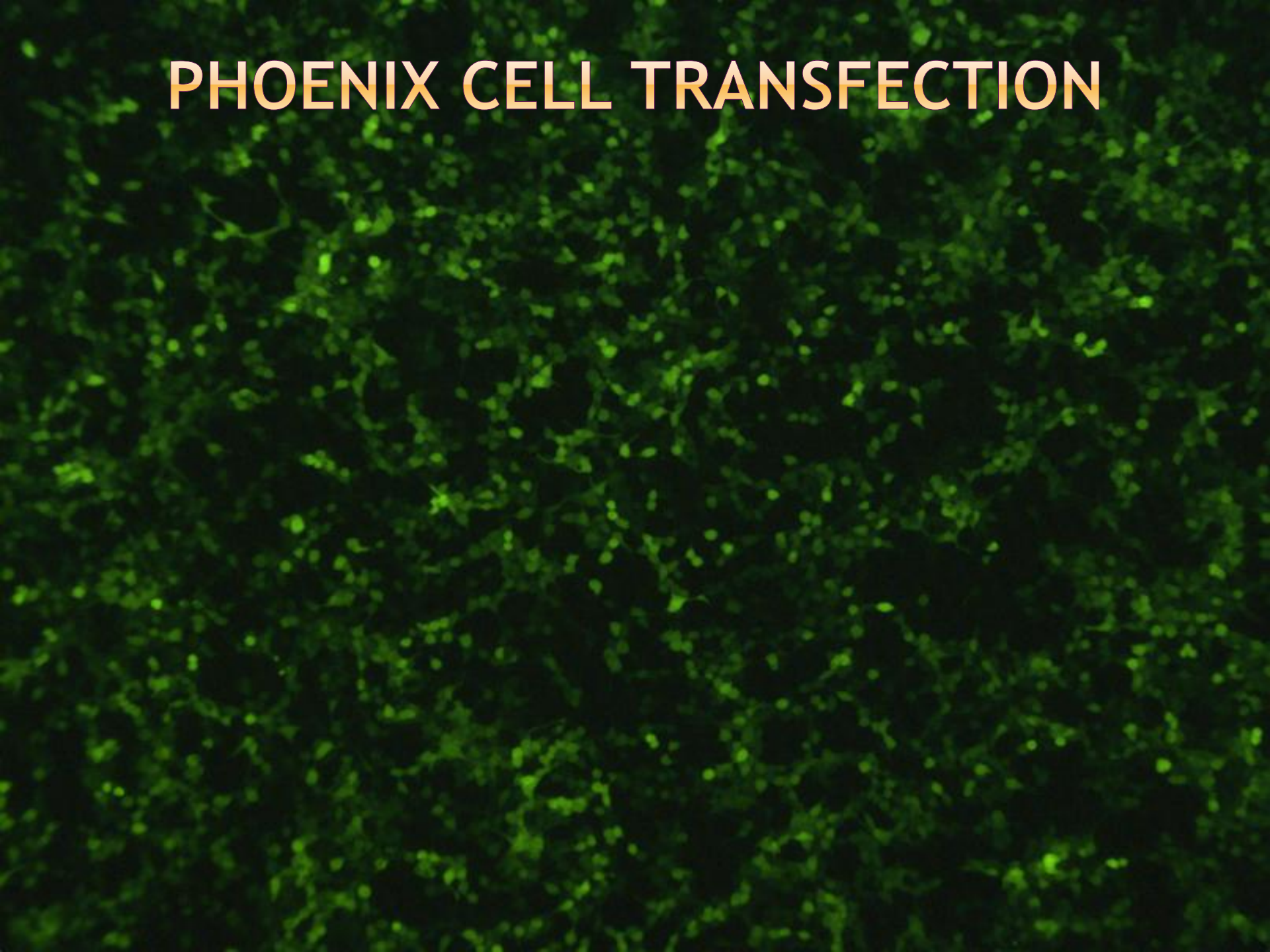


PHOENIX CELLS

ϕ NX Ecotropic and Amphotropic Packaging Lines

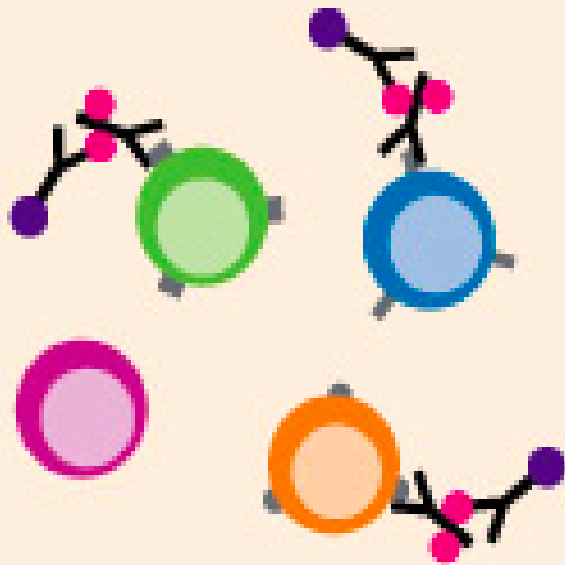


PHOENIX CELL TRANSFECTION

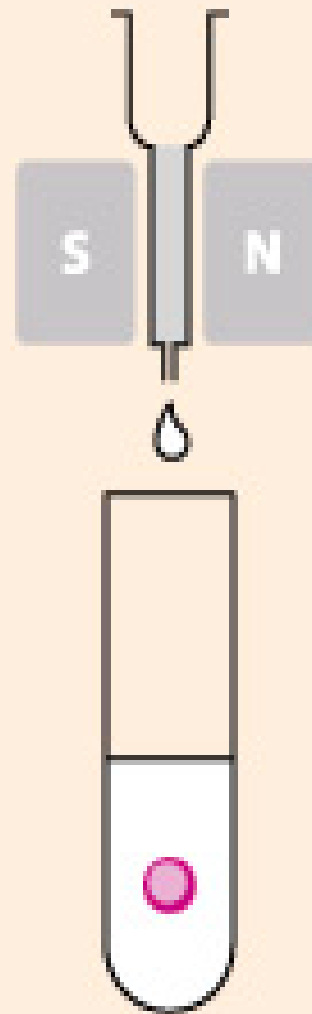


MACS T-CELL PURIFICATION

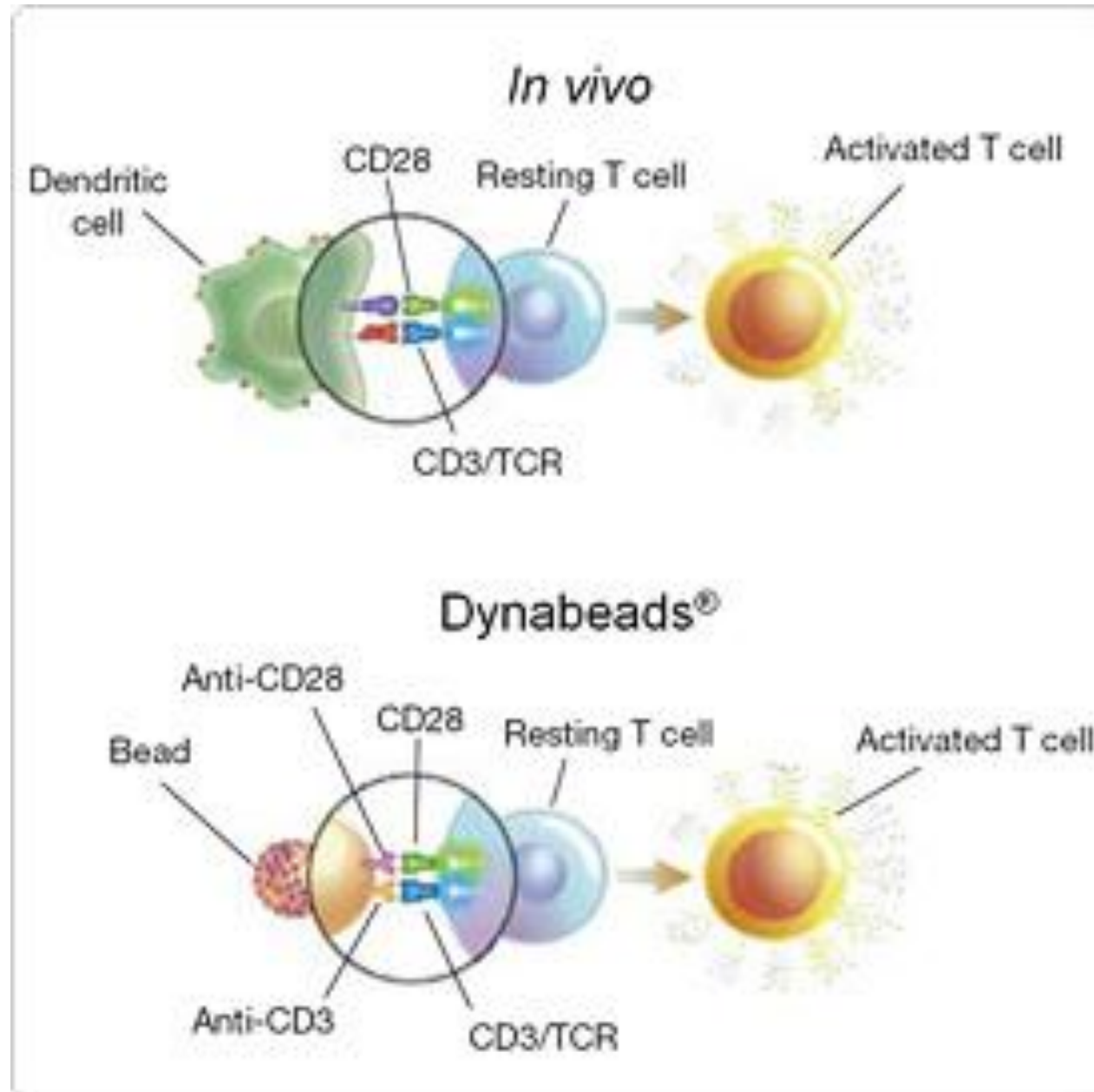
Magnetic labeling



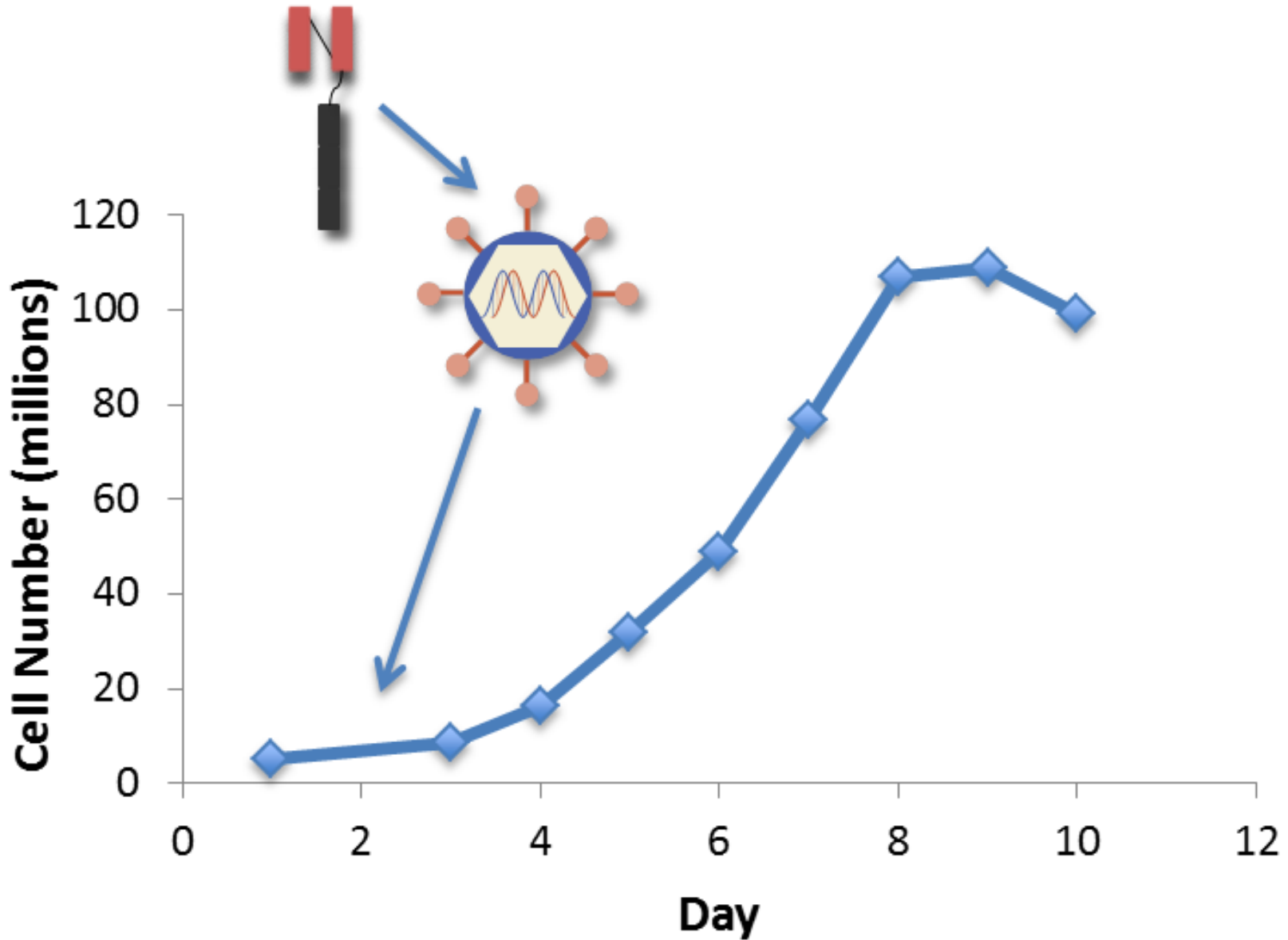
Magnetic separation



T CELL STIMULATION

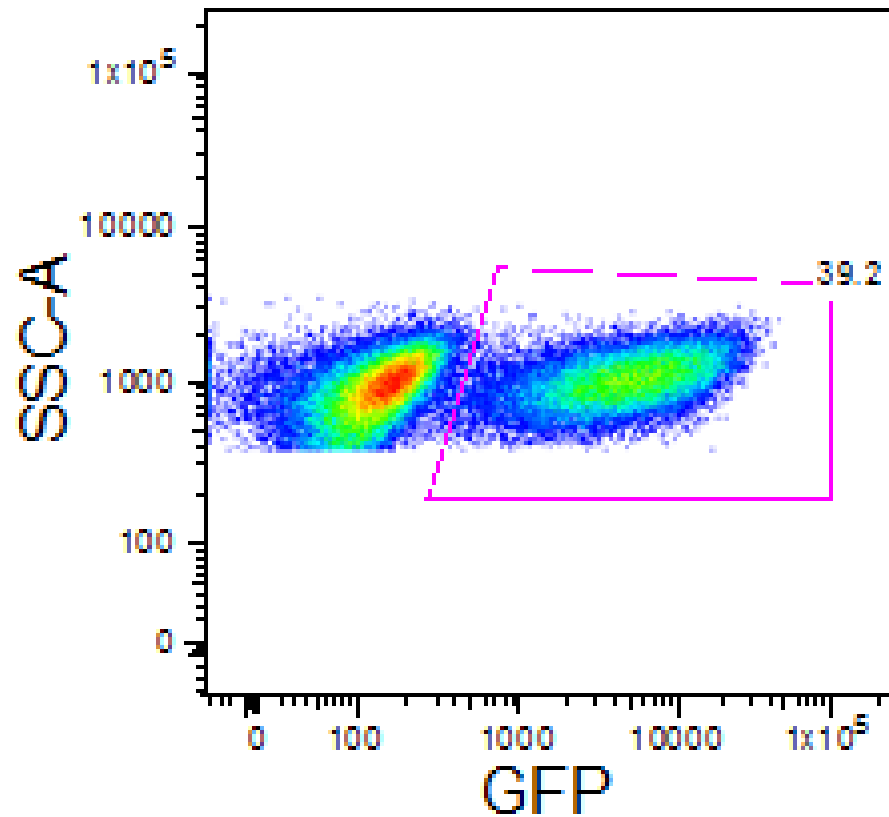


T-CELL EXPANSION

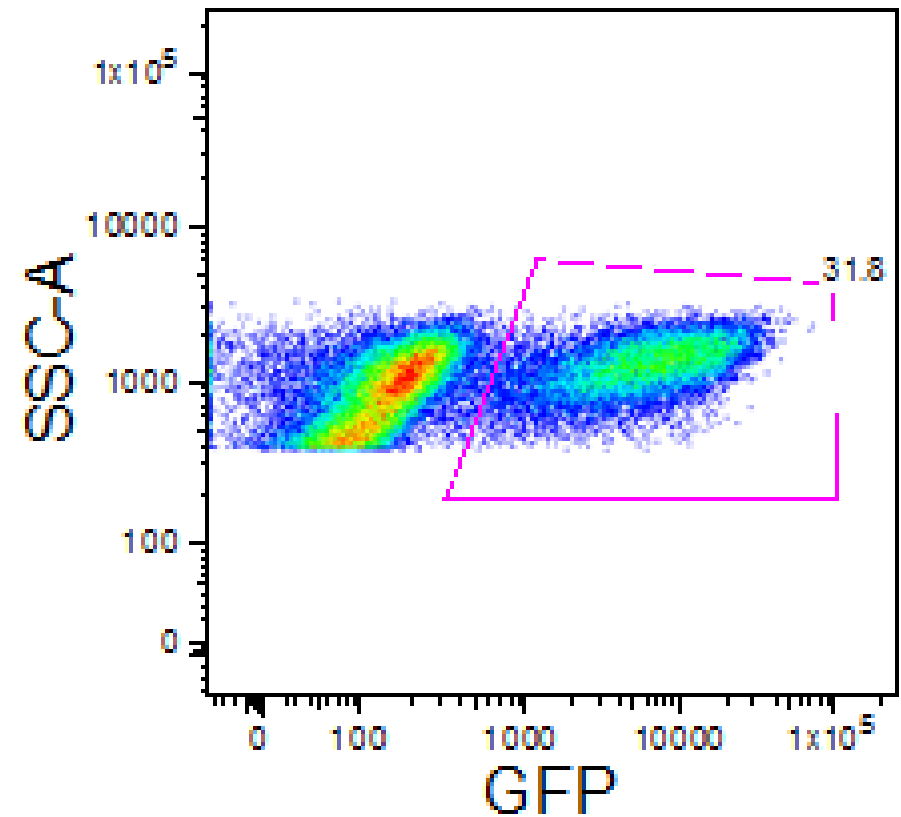


T Cell Transduction Efficiency

5F9 CAR

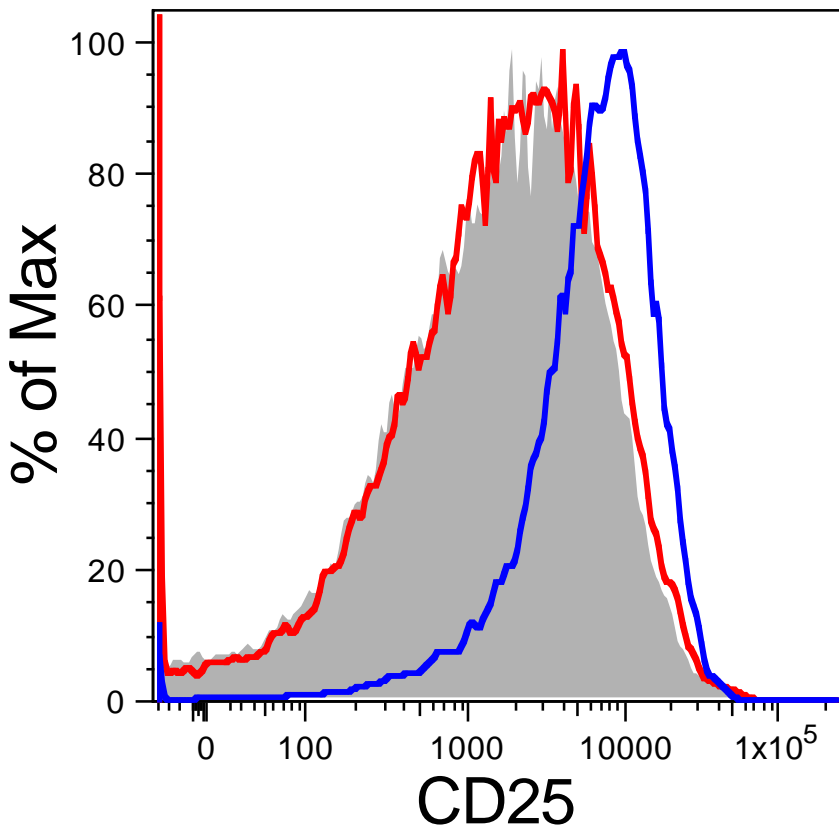


Abx338 CAR

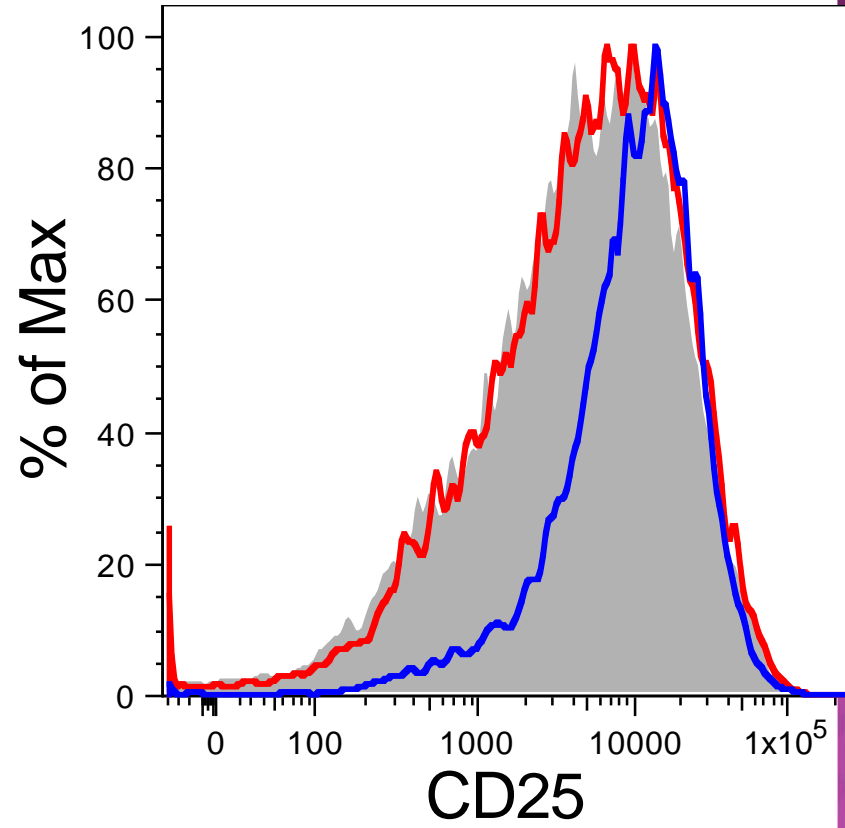


CAR INDUCTION OF CD25 EXPRESSION

5F9 CAR



Abx338 CAR



BSA mGCC hGCC

CONCLUSION

- ★ CREATE 12 CAR PMA PLASMIDS
- ★ TRANSFER CAR'S FROM PMA PLASMID TO RETROVIRAL (MIG) PLASMID
- ★ TRANSDUCE T-CELLS WITH RETROVIRUS TO OBTAIN T-CELLS EXPRESSING CAR DNA
- ★ T-CELL ACTIVATION