

5-23-2011

Mitochondrial oxidative stress drives tumor progression and metastasis: should we use antioxidants as a key component of cancer treatment and prevention?

Federica Sotgia

Manchester Breast Centre and Breakthrough Breast Cancer Research Unit, Paterson Institute for Cancer Research, Manchester, UK; The Jefferson Stem Cell Biology and Regenerative Medicine Center, Philadelphia, PA; Departments of Stem Cell Biology & Regenerative Medicine, and Cancer Biology, Thomas Jefferson University

Ubaldo E Martinez-Outschoorn

Department of Medical Oncology, Kimmel Cancer Center, Thomas Jefferson University; The Jefferson Stem Cell Biology and Regenerative Medicine Center, Philadelphia, PA; Departments of Stem Cell Biology & Regenerative Medicine, and Cancer Biology, Thomas Jefferson University

Follow this and additional works at: https://jdc.jefferson.edu/stem_regenerativefp

Michael P Lisanti

Manchester Breast Centre and Breakthrough Breast Cancer Research Unit, Paterson Institute for Cancer Research, Manchester, UK; Department of Medical Oncology, Kimmel Cancer Center, Thomas Jefferson University; The Jefferson Stem Cell Biology and Regenerative Medicine Center, Philadelphia, PA; Departments of Stem Cell Biology & Regenerative Medicine, and Cancer Biology, Thomas Jefferson University

Recommended Citation

Sotgia, Federica; Martinez-Outschoorn, Ubaldo E; and Lisanti, Michael P, "Mitochondrial oxidative stress drives tumor progression and metastasis: should we use antioxidants as a key component of cancer treatment and prevention?" (2011). *Department of Stem Cell Biology and Regenerative Medicine Faculty Papers & Presentations*. Paper 2.

https://jdc.jefferson.edu/stem_regenerativefp/2

This Article is brought to you for free and open access by the Jefferson Digital Commons. The Jefferson Digital Commons is a service of Thomas Jefferson University's [Center for Teaching and Learning \(CTL\)](#). The Commons is a showcase for Jefferson books and journals, peer-reviewed scholarly publications, unique historical collections from the University archives, and teaching tools. The Jefferson Digital Commons allows researchers and interested readers anywhere in the world to learn about and keep up to date with Jefferson scholarship. This article has been accepted for inclusion in Department of Stem Cell Biology and Regenerative Medicine Faculty Papers & Presentations by an authorized administrator of the Jefferson Digital Commons. For more information, please contact: JeffersonDigitalCommons@jefferson.edu.

COMMENTARY

Open Access

Mitochondrial oxidative stress drives tumor progression and metastasis: should we use antioxidants as a key component of cancer treatment and prevention?

Federica Sotgia^{1,2,3}, Ubaldo E Martinez-Outschoorn^{1,2,4} and Michael P Lisanti^{1,2,3,4*}

Abstract

The functional role of oxidative stress in cancer pathogenesis has long been a hotly debated topic. A study published this month in *BMC Cancer* by Goh *et al.*, directly addresses this issue by using a molecular genetic approach, via an established mouse animal model of human breast cancer. More specifically, alleviation of mitochondrial oxidative stress, via transgenic over-expression of catalase (an anti-oxidant enzyme) targeted to mitochondria, was sufficient to lower tumor grade (from high-to-low) and to dramatically reduce metastatic tumor burden by >12-fold. Here, we discuss these new findings and place them in the context of several other recent studies showing that oxidative stress directly contributes to tumor progression and metastasis. These results have important clinical and translational significance, as most current chemo-therapeutic agents and radiation therapy increase oxidative stress, and, therefore, could help drive tumor recurrence and metastasis. Similarly, chemo- and radiation-therapy both increase the risk for developing a secondary malignancy, such as leukemia and/or lymphoma. To effectively reduce mitochondrial oxidative stress, medical oncologists should now re-consider the use of powerful anti-oxidants as a key component of patient therapy and cancer prevention.

Please see related research article: <http://www.biomedcentral.com/1471-2407/11/191>

Introduction

Mitochondrial oxidative stress has long been implicated in normal aging, and a host of human diseases, including cancer and neurodegenerative disorders, such as Alzheimer's disease. In support of this idea, vegetarians, who consume a diet rich in anti-oxidants, have reduced rates of cancer incidence, have longer life expectancies, and suffer less from dementia [1-3].

Similarly, breast cancer patients taking anti-oxidants showed reduced rates of recurrence, as well as less risk of mortality [4]. In fact, N-acetyl-cysteine (NAC), a powerful anti-oxidant, has anti-tumor properties, and has been recommended for melanoma chemo-prevention [5]. Finally, metformin therapy, a powerful anti-oxidant which reduces reactive oxygen species (ROS) production from mitochondrial complex I, has been associated with a lower risk of various epithelial cancers, in more than 11 studies [6,7].

A simple PubMed search reveals that nearly 9,000 articles have been published linking oxidative stress with cancer pathogenesis. Thus, it is surprising that anti-oxidants are not routinely used as a component of cancer therapy and prevention.

Genetic reduction of mitochondrial oxidative stress reduces tumor grade and inhibits metastasis

This month in *BMC Cancer*, Goh and colleagues [8] use an established mouse model of breast cancer tumor formation and metastasis (MMTV-PyMT) to explore the role of mitochondrial oxidative stress in cancer pathogenesis. To reduce mitochondrial oxidative stress, they targeted a powerful anti-oxidant protein (catalase; which inactivates hydrogen peroxide) to mitochondria. This was achieved by modifying catalase with the addition of an N-terminal mitochondrial targeting signal and the

* Correspondence: michael.lisanti@kimmelcancercenter.org

¹The Jefferson Stem Cell Biology and Regenerative Medicine Center, Philadelphia, PA, USA

Full list of author information is available at the end of the article

deletion of a C-terminal peroxisome targeting sequence. Transgenic mice harboring mito-catalase have been previously shown to have an extended lifespan, consistent with the idea that mitochondrial oxidative stress directly contributes to normal aging [9].

Remarkably, MMTV-PyMT mice expressing mito-catalase showed a significant reduction in tumor grade (from high-grade to low-grade), and a dramatic reduction in lung metastatic tumor burden (>12-fold). Thus, it appears that genetic reductions in mitochondrial oxidative stress prevent i) normal aging, as well as ii) tumor progression, and iii) metastasis. Regardless of the exact mechanism, their results suggest that we should be treating cancer patients with powerful anti-oxidants, as a form of chemotherapy (either alone or following other therapies).

Previous studies evaluating the use of anti-oxidants in breast cancer patients have shown mixed results [4,10,11]. However, this may be because some studies are population-based without standardized treatments and/or only certain subtypes of breast cancer are sensitive to anti-oxidants. For example, breast cancers with a loss of stromal caveolin-1 (Cav-1) generate higher levels of reactive oxygen species (ROS) [12-14], as compared to breast cancers expressing high levels of stromal Cav-1. Loss of stromal Cav-1 is predictive of recurrence, metastasis, and poor clinical outcome, and as such is a new biomarker for breast and prostate cancer [15,16].

How does mitochondrial oxidative stress drive tumor growth and metastasis?

What are the possible mechanism(s) by which mitochondrial oxidative stress contributes to tumor initiation and progression? Since the transgenic over-expression of "mitochondrial" catalase in these experiments is targeted to the whole body, it remains unknown whether the findings of Goh *et al.* [8] are related to reductions in oxidative stress in epithelial cancer cells, in the surrounding stromal cells, or in both cellular compartments.

One possibility is that mitochondrial oxidative stress in epithelial cancer cells leads to ROS production and ensuing DNA damage, resulting in an increased mutation rate and tumor evolution, via the positive selection of tumor cell mutations that confer a growth advantage (Figure 1). In support of this notion, there is substantial evidence that another anti-oxidant enzyme, namely mitochondrial SOD2 (which de-activates super-oxide), behaves as a potent tumor suppressor protein [17-19].

Another possibility is that mitochondrial oxidative stress in tumor stromal cells, such as cancer associated fibroblasts, may have genetic and metabolic consequences that promote tumor growth (Figure 1).

In fact, MMTV-PyMT mice require an activated tumor stroma for the development of metastasis. Cross-

talk between macrophages and epithelial cells via CSF-1 and EGF ligands is needed for progression [20]. Similarly, activation of their fibroblastic stroma by deletion of the Cav-1 gene (thereby increasing oxidative stress [12]) significantly promotes lung metastasis (>4-fold) in MMTV-PyMT mice [21,22].

More recent studies have shown that cancer cells induce oxidative stress in adjacent stromal fibroblasts, thereby conferring the cancer associated fibroblast phenotype [12,23]. Oxidative stress (due to ROS over-production) in cancer associated fibroblasts then leads to genetic instability in adjacent cancer cells (DNA damage and aneuploidy) via a "bystander effect", driving tumor-stroma co-evolution [12]. ROS over-production in cancer associated fibroblasts also drives the onset of autophagy and mitophagy in these cells, resulting in aerobic glycolysis, with lactate and ketone production (the "Reverse Warburg Effect") [14]. Energy-rich metabolites (lactate, pyruvate, ketones, and glutamine) are then transferred to "hungry" cancer cells, promoting mitochondrial biogenesis and anabolic growth in these tumor cells [24]. This event, in turn, promotes tumor growth and protects these cancer cells against apoptosis [12-14]. This new model of tumorigenesis has been termed "The Autophagic Tumor Stroma Model of Cancer Metabolism" [25,26]. The *in vivo* relevance of this model for breast and prostate cancer has been confirmed using the new biomarker Cav-1 [15,16,27]. When stromal Cav-1 is lost in cancer associated fibroblasts (due to the onset of oxidative stress, hypoxia, and/or autophagy) [12-14,28,29], this is highly predictive of tumor recurrence, metastasis, and drug-resistance [15]. For example, triple negative breast cancer patients with high stromal Cav-1 have a 12-year survival rate of >75% [30]. In contrast, triple negative breast cancer patients with a loss of stromal Cav-1 have a five-year survival rate of < 10% [30].

The association between loss of stromal Cav-1 and oxidative stress in the tumor stroma has also been confirmed by transcriptional profiling and bears a striking resemblance to the gene expression profiles of Alzheimer's disease (which is also directly linked to oxidative stress) [31,32]. In fact, when the gene profile of Alzheimer's disease brain was intersected with the transcriptional profiles from the tumor stroma of patients with breast cancer, this was sufficient to identify which breast cancer patients would undergo metastasis [32]. Thus, oxidative stress is common to both of these biological processes (cancer and neuro-degeneration), and may underlie their pathogenesis [31,32].

In order to further test the validity of this model and its dependence on mitochondrial oxidative stress, Capozza, Lisanti, and colleagues over-expressed mitochondrial SOD2 in cancer associated fibroblasts [33]. As

Tumor-Stroma Co-Evolution

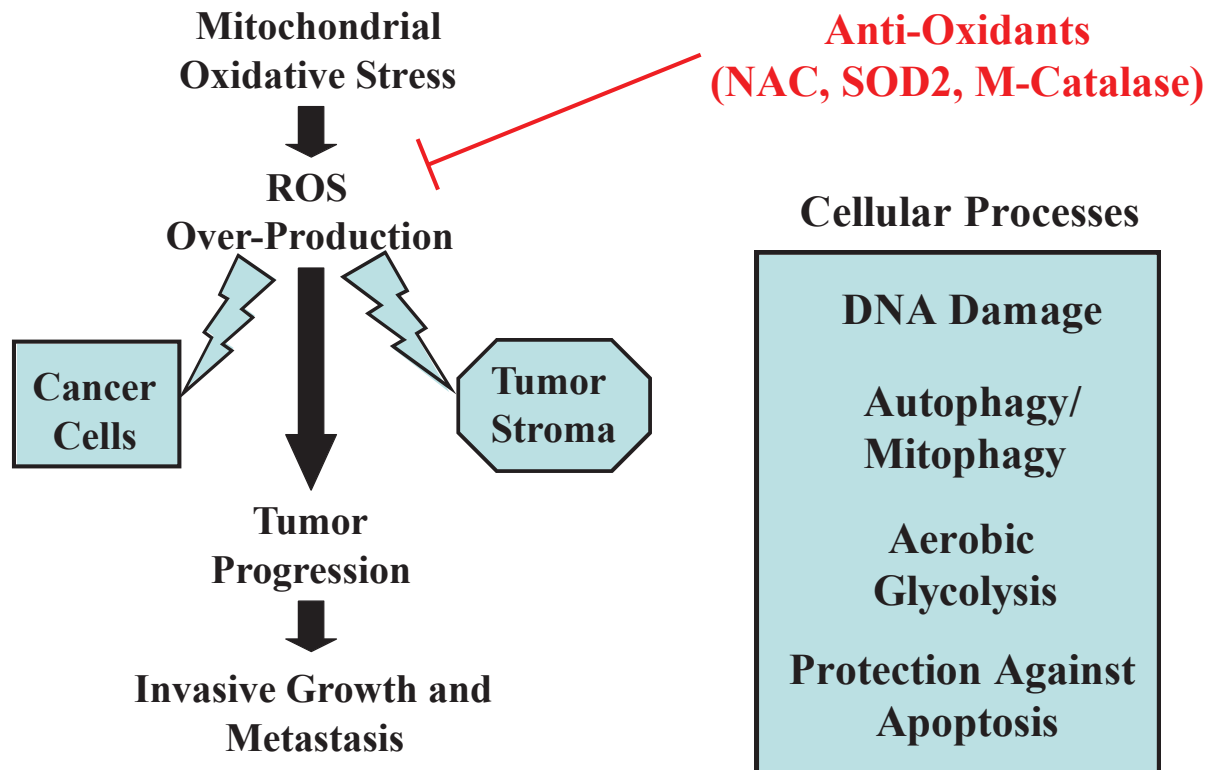


Figure 1 Tumor evolution is fueled by mitochondrial oxidative stress. The experiments by Goh *et al.* directly show that blocking mitochondrial ROS inhibits metastasis, indicating that mitochondrial oxidative stress promotes tumor progression and metastasis. The observed effects most likely involve the effects of ROS on both cancer cells and their surrounding tumor stroma. Cellular processes activated by ROS include DNA damage, autophagy/mitophagy, and aerobic glycolysis. Complementary studies have shown that ROS-induced activation of autophagy and aerobic glycolysis in cancer associated fibroblasts provide recycled nutrients (pyruvate, lactate, ketones, and glutamine, among others) for anabolic cancer cell growth, and protects these cancer cells against apoptosis. Importantly, anti-oxidants will prevent the oxidative stress, reducing tumor progression and metastasis. NAC, N-acetyl-cysteine; SOD2, mitochondrial superoxide dismutase; M-catalase, mitochondrially targeted catalase.

predicted, over-expression of mitochondrial SOD2 in cancer associated fibroblasts was indeed sufficient to inhibit tumor growth by nearly two-fold [33]. These results indicate that mitochondrial SOD2 also behaves as a tumor suppressor in the stromal microenvironment [33]. Importantly, cytoplasmic SOD1 was ineffective in this stromal context, supporting a specific role for mitochondrial oxidative stress.

Similarly, oxidative stress is known to be sufficient to convert normal fibroblasts to myo-fibroblasts or cancer associated fibroblasts, via activation of two key transcription factors, namely HIF1-alpha and NFkB [12,14,34-36]. Thus, one way to genetically pheno-copy the effects of oxidative stress is to over-express activated forms of HIF1-alpha or NFkB [34]. As such, fibroblasts expressing activated HIF1-alpha or NFkB are sufficient

to promote tumor growth, up to three-fold [34]. Furthermore, activation of HIF-alpha or NFkB in fibroblasts drives a loss of stromal Cav-1 via lysosomal degradation, and activates the autophagic program resulting in mitophagy, a shift towards aerobic glycolysis, and lactate production [34]. Fibroblasts harboring activated HIF1-alpha or NFkB, then provide lactate and other recycled nutrients to feed cancer cells [34].

Additional lines of evidence also support the idea that oxidative stress in the tumor stroma plays a key role in cancer pathogenesis and tumor spreading. For example, there are numerous papers directly showing that local or systemic administration of purified anti-oxidant proteins (that is, catalase or SOD) is sufficient to block tumor recurrence and distant metastasis in multiple cancer models [37-39].

Conclusions

In order to maximize treatment benefits, we will need to develop new biomarkers (like stromal Cav-1) to predict which cancer patients will respond best to anti-oxidant therapy. Unfortunately, most medical oncologists now recommend against taking anti-oxidants during cancer therapy, as it “may reduce the effectiveness of chemotherapies”, which are largely based on increasing oxidative stress [4]. However, in direct contradiction of this recommendation, a recent breast cancer study directly shows that anti-oxidant therapy significantly reduces breast cancer recurrence and mortality [4].

Thus, reductions in mitochondrial oxidative stress in both cancer cells and their surrounding tumor stroma may be beneficial for preventing tumor progression and metastasis. Ultimately, this “new concept” could radically change how we treat cancer patients, and stimulate new anti-oxidant strategies for cancer prevention.

Abbreviations

HIF1: hypoxia-inducible factor 1; MMTV: mouse mammary tumor virus; PyMT: polyoma middle T antigen; ROS: reactive oxygen species; SOD2: superoxide dismutase 2, mitochondrial enzyme

Acknowledgements

FS and her laboratory were supported by grants from the W.W. Smith Charitable Trust, the Breast Cancer Alliance (BCA), and a Research Scholar Grant from the American Cancer Society (ACS). M.P.L. was supported by grants from the NIH/NCI (R01-CA-080250; R01-CA-098779; R01-CA-120876; R01-AR-055660), and the Susan G. Komen Breast Cancer Foundation. Funds were also contributed by the Margaret Q. Landenberger Research Foundation (to M.P.L.).

Author details

¹The Jefferson Stem Cell Biology and Regenerative Medicine Center, Philadelphia, PA, USA. ²Departments of Stem Cell Biology & Regenerative Medicine, and Cancer Biology, Thomas Jefferson University, Philadelphia, PA, USA. ³Manchester Breast Centre and Breakthrough Breast Cancer Research Unit, Paterson Institute for Cancer Research, Manchester, UK. ⁴Department of Medical Oncology, Kimmel Cancer Center, Thomas Jefferson University, Philadelphia, PA, USA.

Authors' contributions

FS, UEM-O and MPL all contributed equally to the writing and editing of this commentary. All authors read and approved the final manuscript.

Competing interests

The authors declare that they have no competing interests.

Received: 22 March 2011 Accepted: 23 May 2011

Published: 23 May 2011

References

1. Giem P, Beeson WL, Fraser GE: **The incidence of dementia and intake of animal products: preliminary findings from the Adventist Health Study.** *Neuroepidemiology* 1993, **12**:28-36.
2. Singh PN, Sabate J, Fraser GE: **Does low meat consumption increase life expectancy in humans?** *Am J Clin Nutr* 2003, **78**:526S-532S.
3. Fraser GE: **Vegetarian diets: what do we know of their effects on common chronic diseases?** *Am J Clin Nutr* 2009, **89**:1607S-1612S.
4. Nechuta S, Lu W, Chen Z, Zheng Y, Gu K, Cai H, Zheng W, Shu XO: **Vitamin supplement use during breast cancer treatment and survival: a prospective cohort study.** *Cancer Epidemiol Biomarkers Prev* 2011, **20**:262-271.
5. Goodson AG, Cotter MA, Cassidy P, Wade M, Florell SR, Liu T, Boucher KM, Grossman D: **Use of oral N-acetylcysteine for protection of melanocytic nevi against UV-induced oxidative stress: towards a novel paradigm for melanoma chemoprevention.** *Clin Cancer Res* 2009, **15**:7434-7440.
6. Bosco JL, Antonsen S, Sorensen HT, Pedersen L, Lash TL: **Metformin and incident breast cancer among diabetic women: a population-based case-control study in Denmark.** *Cancer Epidemiol Biomarkers Prev* 2011, **20**:101-111.
7. Decensi A, Puntoni M, Goodwin P, Cazzaniga M, Gennari A, Bonanni B, Gandini S: **Metformin and cancer risk in diabetic patients: a systematic review and meta-analysis.** *Cancer Prev Res (Phila)* 2010, **3**:1451-1461.
8. Goh J, Enns L, Fatemie S, Hopkins H, Morton J, Pettan-Brewer C, Ladiges W: **Mitochondrial targeted catalase suppresses invasive breast cancer in mice.** *BMC Cancer* 2011.
9. Schriener SE, Linford NJ, Martin GM, Treuting P, Ogburn CE, Emond M, Coskun PE, Ladiges W, Wolf N, Van Remmen H, Wallace DC, Rabinovitch PS: **Extension of murine life span by overexpression of catalase targeted to mitochondria.** *Science* 2005, **308**:1909-1911.
10. Lesperance ML, Olivetto IA, Forde N, Zhao Y, Speers C, Foster H, Tsao M, MacPherson N, Hoffer A: **Mega-dose vitamins and minerals in the treatment of non-metastatic breast cancer: an historical cohort study.** *Breast Cancer Res Treat* 2002, **76**:137-143.
11. Israel L, Hajji O, Grefft-Alami A, Desmoulin D, Succari M, Cals MJ, Miocque M, Breau JL, Moreau JF: **[Vitamin A augmentation of the effects of chemotherapy in metastatic breast cancers after menopause. Randomized trial in 100 patients].** *Ann Med Interne (Paris)* 1985, **136**:551-554.
12. Martinez-Outschoorn UE, Balliet RM, Rivadeneira DB, Chiavarina B, Pavlides S, Wang C, Whitaker-Menezes D, Daumer KM, Lin Z, Witkiewicz AK, Flomenberg N, Howell A, Pestell RG, Knudsen ES, Sotgia F, Lisanti MP: **Oxidative stress in cancer associated fibroblasts drives tumor-stroma co-evolution: a new paradigm for understanding tumor metabolism, the field effect, and genomic instability in cancer cells.** *Cell Cycle* 2010, **9**:3256-3276.
13. Martinez-Outschoorn UE, Pavlides S, Whitaker-Menezes D, Daumer KM, Milliman JN, Chiavarina B, Migneco G, Witkiewicz AK, Martinez-Cantarin MP, Flomenberg N, Howell A, Pestell RG, Lisanti MP, Sotgia F: **Tumor cells induce the cancer associated fibroblast phenotype via caveolin-1 degradation: implications for breast cancer and DCIS therapy with autophagy inhibitors.** *Cell Cycle* 2010, **9**:2423-2433.
14. Martinez-Outschoorn UE, Trimmer C, Lin Z, Whitaker-Menezes D, Chiavarina B, Zhou J, Wang C, Pavlides S, Martinez-Cantarin MP, Capozza F, Witkiewicz AK, Flomenberg N, Howell A, Pestell RG, Caro J, Lisanti MP, Sotgia F: **Autophagy in cancer associated fibroblasts promotes tumor cell survival: role of hypoxia, HIF1 induction, and NFkB activation in the tumor stromal microenvironment.** *Cell Cycle* 2010, **9**:3515-3533.
15. Witkiewicz AK, Dasgupta A, Sotgia F, Mercier I, Pestell RG, Sabel M, Kleer CG, Brody JR, Lisanti MP: **An absence of stromal caveolin-1 expression predicts early tumor recurrence and poor clinical outcome in human breast cancers.** *Am J Pathol* 2009, **174**:2023-2034.
16. Di Vizio D, Morello M, Sotgia F, Pestell RG, Freeman MR, Lisanti MP: **An absence of stromal caveolin-1 is associated with advanced prostate cancer, metastatic disease and epithelial Akt activation.** *Cell Cycle* 2009, **8**:2420-2424.
17. Bravard A, Sabatier L, Hoffschir F, Ricoul M, Luccioni C, Dutrillaux B: **SOD2: a new type of tumor-suppressor gene?** *Int J Cancer* 1992, **51**:476-480.
18. Behrend L, Mohr A, Dick T, Zwacka RM: **Manganese superoxide dismutase induces p53-dependent senescence in colorectal cancer cells.** *Mol Cell Biol* 2005, **25**:7758-7769.
19. St Clair D, Zhao Y, Chaiswing L, Oberley T: **Modulation of skin tumorigenesis by SOD.** *Biomed Pharmacother* 2005, **59**:209-214.
20. Wyckoff J, Wang W, Lin EY, Wang Y, Pixley F, Stanley ER, Graf T, Pollard JW, Segall J, Condeelis J: **A paracrine loop between tumor cells and macrophages is required for tumor cell migration in mammary tumors.** *Cancer Res* 2004, **64**:7022-7029.
21. Williams TM, Medina F, Badano I, Hazan RB, Hutchinson J, Muller WJ, Chopra NG, Scherer PE, Pestell RG, Lisanti MP: **Caveolin-1 gene disruption promotes mammary tumorigenesis and dramatically enhances lung metastasis in vivo: Role of Cav-1 in cell invasiveness and matrix metalloproteinase (MMP-2/9) secretion.** *J Biol Chem* 2004, **279**:51630-51646.

22. Williams TM, Sotgia F, Lee H, Hassan G, Di Vizio D, Bonuccelli G, Capozza F, Mercier I, Rui H, Pestell RG, Lisanti MP: **Stromal and epithelial caveolin-1 both confer a protective effect against mammary hyperplasia and tumorigenesis: caveolin-1 antagonizes cyclin D1 function in mammary epithelial cells.** *Am J Pathol* 2006, **169**:1784-1801.
23. Pavlides S, Whitaker-Menezes D, Castello-Cros R, Flomenberg N, Witkiewicz AK, Frank PG, Casimiro MC, Wang C, Fortina P, Addya S, Pestell RG, Martinez-Outschoorn UE, Sotgia F, Lisanti MP: **The reverse Warburg effect: aerobic glycolysis in cancer associated fibroblasts and the tumor stroma.** *Cell Cycle* 2009, **8**:3984-4001.
24. Pavlides S, Tsigirgos A, Migneco G, Whitaker-Menezes D, Chiavarina B, Flomenberg N, Frank PG, Casimiro MC, Wang C, Pestell RG, Martinez-Outschoorn UE, Howell A, Sotgia F, Lisanti MP: **The autophagic tumor stroma model of cancer: role of oxidative stress and ketone production in fueling tumor cell metabolism.** *Cell Cycle* 2010, **9**:3485-3505.
25. Martinez-Outschoorn UE, Whitaker-Menezes D, Pavlides S, Chiavarina B, Bonuccelli G, Casey T, Tsigirgos A, Migneco G, Witkiewicz A, Balliet R, Mercier I, Wang C, Flomenberg N, Howell A, Lin Z, Caro J, Pestell RG, Sotgia F, Lisanti MP: **The autophagic tumor stroma model of cancer or "battery-operated tumor growth": a simple solution to the autophagy paradox.** *Cell Cycle* 2010, **9**:4297-4306.
26. Lisanti MP, Martinez-Outschoorn UE, Chiavarina B, Pavlides S, Whitaker-Menezes D, Tsigirgos A, Witkiewicz A, Lin Z, Balliet R, Howell A, Sotgia F: **Understanding the "lethal" drivers of tumor-stroma co-evolution: emerging role(s) for hypoxia, oxidative stress and autophagy/mitophagy in the tumor micro-environment.** *Cancer Biol Ther* 2010, **10**:537-542.
27. Sloan EK, Ciocca D, Pouliot N, Natoli A, Restall C, Henderson M, Fanelli M, Cuello-Carrión F, Gago F, Anderson R: **Stromal cell expression of caveolin-1 predicts outcome in breast cancer.** *Am J Pathol* 2009, **174**:2035-2043.
28. Sotgia F, Del Galdo F, Casimiro MC, Bonuccelli G, Mercier I, Whitaker-Menezes D, Daumer KM, Zhou J, Wang C, Katiyar S, Xu H, Bosco E, Quong AA, Aronow B, Witkiewicz AK, Minetti C, Frank PG, Jimenez SA, Knudsen ES, Pestell RG, Lisanti MP: **Caveolin-1/- null mammary stromal fibroblasts share characteristics with human breast cancer-associated fibroblasts.** *Am J Pathol* 2009, **174**:746-761.
29. Mercier I, Casimiro MC, Wang C, Rosenberg AL, Quong J, Allen KG, Danilo C, Sotgia F, Bonuccelli G, Jasmin JF, et al: **Human breast cancer-associated fibroblasts (CAFs) show caveolin-1 down-regulation and RB tumor suppressor functional inactivation: implications for the response to hormonal therapy.** *Cancer Biol Ther* 2008, **7**:1212-1225.
30. Witkiewicz AK, Dasgupta A, Sammons S, Er O, Potoczek MB, Guiles F, Sotgia F, Brody JR, Mitchell EP, Lisanti MP: **Loss of stromal caveolin-1 expression predicts poor clinical outcome in triple negative and basal-like breast cancers.** *Cancer Biol Ther* 2010, **10**:135-143.
31. Pavlides S, Tsigirgos A, Vera I, Flomenberg N, Frank PG, Casimiro MC, Wang C, Fortina P, Addya S, Pestell RG, Martinez-Outschoorn UE, Sotgia F, Lisanti MP: **Loss of stromal caveolin-1 leads to oxidative stress, mimics hypoxia, and drives inflammation in the tumor microenvironment, conferring the "Reverse Warburg Effect": a transcriptional informatics analysis with validation.** *Cell Cycle* 2010, **9**:2201-2219.
32. Pavlides S, Tsigirgos A, Vera I, Flomenberg N, Frank PG, Casimiro MC, Wang C, Pestell RG, Martinez-Outschoorn UE, Howell A, Sotgia F, Lisanti MP: **Transcriptional evidence for the "Reverse Warburg Effect" in human breast cancer tumor stroma and metastasis: similarities with oxidative stress, inflammation, Alzheimer's disease, and "Neuron-Glia Metabolic Coupling".** *Aging (Albany NY)* 2010, **2**:185-199.
33. Trimmer C, Sotgia F, Whitaker-Menezes D, Balliet R, Eaton G, Martinez-Outschoorn UE, Pavlides S, Howell A, Iozzo RV, Pestell RG, Scherer PE, Capozza F, Lisanti MP: **Caveolin-1 and mitochondrial SOD2 (MnSOD) function as tumor suppressors in the stromal microenvironment: A new genetically tractable model for human cancer associated fibroblasts.** *Cancer Biol Ther* 2011, **11**:383-394.
34. Chiavarina B, Whitaker-Menezes D, Migneco G, Martinez-Outschoorn UE, Pavlides S, Howell A, Tanowitz HB, Casimiro MC, Wang C, Pestell RG, Grieshaber P, Caro J, Sotgia F, Lisanti MP: **HIF1-alpha functions as a tumor promoter in cancer associated fibroblasts, and as a tumor suppressor in breast cancer cells: autophagy drives compartment-specific oncogenesis.** *Cell Cycle* 2010, **9**:3534-3551.
35. Toullec A, Gerald D, Despouy G, Bourachot B, Cardon M, Lefort S, Richardson M, Rigault G, Parrini MC, Lucchesi C, Bellanger D, Stern MH, Dubois T, Sastre-Garau X, Delattre O, Vincent-Salomon A, Mecht-
- Grigoriou F: **Oxidative stress promotes myofibroblast differentiation and tumour spreading.** *EMBO Mol Med* 2010, **2**:211-230.
36. Erez N, Truitt M, Olson P, Arron ST, Hanahan D: **Cancer-associated fibroblasts are activated in incipient neoplasia to orchestrate tumor-promoting inflammation in an NF-kappaB-dependent manner.** *Cancer Cell* 2010, **17**:135-147.
37. Nishikawa M, Hashida M, Takakura Y: **Catalase delivery for inhibiting ROS-mediated tissue injury and tumor metastasis.** *Adv Drug Deliv Rev* 2009, **61**:319-326.
38. Hyoudou K, Nishikawa M, Ikemura M, Kobayashi Y, Mendelsohn A, Miyazaki N, Tabata Y, Yamashita F, Hashida M: **Prevention of pulmonary metastasis from subcutaneous tumors by binary system-based sustained delivery of catalase.** *J Control Release* 2009, **137**:110-115.
39. van Rossen ME, Sluiter W, Bonthuis F, Jeekel H, Marquet RL, van Eijck CH: **Scavenging of reactive oxygen species leads to diminished peritoneal tumor recurrence.** *Cancer Res* 2000, **60**:5625-5629.

Pre-publication history

The pre-publication history for this paper can be accessed here:
<http://www.biomedcentral.com/1741-7015/9/62/prepub>

doi:10.1186/1741-7015-9-62

Cite this article as: Sotgia et al.: Mitochondrial oxidative stress drives tumor progression and metastasis: should we use antioxidants as a key component of cancer treatment and prevention? *BMC Medicine* 2011 **9**:62.

Submit your next manuscript to BioMed Central and take full advantage of:

- Convenient online submission
- Thorough peer review
- No space constraints or color figure charges
- Immediate publication on acceptance
- Inclusion in PubMed, CAS, Scopus and Google Scholar
- Research which is freely available for redistribution

Submit your manuscript at
www.biomedcentral.com/submit

