

5-2010

## Division Officers and Boards

Follow this and additional works at: <http://jdc.jefferson.edu/scitechnews>

 Part of the [Physical Sciences and Mathematics Commons](#)

[Let us know how access to this document benefits you](#)

---

### Recommended Citation

(2010) "Division Officers and Boards," *Sci-Tech News*: Vol. 64 : Iss. 2 , Article 15.

Available at: <http://jdc.jefferson.edu/scitechnews/vol64/iss2/15>

This Article is brought to you for free and open access by the Jefferson Digital Commons. The Jefferson Digital Commons is a service of Thomas Jefferson University's [Center for Teaching and Learning \(CTL\)](#). The Commons is a showcase for Jefferson books and journals, peer-reviewed scholarly publications, unique historical collections from the University archives, and teaching tools. The Jefferson Digital Commons allows researchers and interested readers anywhere in the world to learn about and keep up to date with Jefferson scholarship. This article has been accepted for inclusion in *Sci-Tech News* by an authorized administrator of the Jefferson Digital Commons. For more information, please contact: [JeffersonDigitalCommons@jefferson.edu](mailto:JeffersonDigitalCommons@jefferson.edu).

## Engineering Division Officers and Board 2010

### Chair

Laurie Allen  
Teledyne Scientific & Imaging  
1049 Camino Dos Rios  
Thousand Oaks, CA 91360  
Phone: 805-373-4748  
[lallen@teledyne.com](mailto:lallen@teledyne.com)

### Chair-Elect

Kathryn Breininger  
Boeing Co.  
PO Box 3707, MC 62-LC  
Seattle, WA 98124-2207  
[Kathryn.r.breininger@boeing.com](mailto:Kathryn.r.breininger@boeing.com)

### Past Chair

Dee Magnoni  
Olin College of Engineering  
1000 Olin Way  
Needham, MA 02492  
Phone: 781-292-2389  
[dianna.magnoni@olin.edu](mailto:dianna.magnoni@olin.edu)

### Treasurer

Mary Whittaker  
Boeing Co  
PO Box 3707  
MC 62-LC  
Seattle, WA 98124-2207  
[mary.s.whittaker@boeing.com](mailto:mary.s.whittaker@boeing.com)

### Secretary

Mary Frances Panettiere  
GA Institute of Technology  
704 Cherry St,  
Atlanta, GA 30332-0900  
404-894-0401  
[maryfrances.panettiere@library.gatech.edu](mailto:maryfrances.panettiere@library.gatech.edu)

### 2011 Conference Planner

Cynthia Eastman  
Kennedy Jenks  
303 Second St.  
San Francisco, CA 94107  
415-243-2531  
[cynthiaeastman@kennedyjenks.com](mailto:cynthiaeastman@kennedyjenks.com)

### Awards Chair

Bing Wang  
GA Institute of Technology  
704 Cherry St,  
Atlanta, GA 30332-0900  
404-894-0816  
[bing.wang@library.gatech.edu](mailto:bing.wang@library.gatech.edu)

### Standards Committee

Helen Josephine  
Terman Engineering Center  
Stanford University  
Stanford, CA 94395-4029  
650-725-1012  
[helenj@stanford.edu](mailto:helenj@stanford.edu)

### Standards Committee

Cheryl Cove  
Raytheon Company  
M/S 5-1-221  
528 Boston Post Road  
Sudbury, MA 01776  
978-440-2282  
[Cheryl\\_a\\_cove@raytheon.com](mailto:Cheryl_a_cove@raytheon.com)

### Archivist and Mentoring

Bonnie Osif  
Pennsylvania State University  
325 Hammond Bldg,  
University Park, PA 16802  
814-865-3697  
[bao2@psu.edu](mailto:bao2@psu.edu)

### Membership

Daureen Nesdill  
J Willard Library  
295 S 1500 E  
Salt Lake City, UT 84112-0860  
801-581-7533  
[daureen.nesill@utah.edu](mailto:daureen.nesill@utah.edu)

### Discussion List Owner

Bob Tolliver  
Pennsylvania State University  
105 Deike Bldg,  
University Park, PA 16802  
814-865-3694  
[rlt17@psu.edu](mailto:rlt17@psu.edu)

### Web Editor

Tina Gheem  
National Science Foundation  
4201 Wilson Blvd, Rm 225  
Arlington VA, 22230  
703-292-7830  
[ticlayt@hotmail.com](mailto:ticlayt@hotmail.com)

### Vendor Relations

Sara Davis  
Jacobs Engineering Group, Inc  
5995 Rogerdale Rd,  
Houston, TX 77072  
832-351-7025  
[sara.davis@jacobs.com](mailto:sara.davis@jacobs.com)

## Aerospace Section

### Chair

Hema Ramachandran  
California State University,  
Long Beach  
1250 Bellflower Blvd-MS1901  
University Library  
Long Beach, CA 90840-1901  
562-985-5749  
[hramacha@csulb.edu](mailto:hramacha@csulb.edu)

### Chair-Elect

Adrienne Jones Washburn  
Lockheed Martin Aeronautics  
One Lockheed Blvd., Mz 1524  
Fort Worth, TX 76108  
817-741-7341  
[adrienne.e.jones@lmco.com](mailto:adrienne.e.jones@lmco.com)

### Past Chair

Gale Harris  
Lockheed Martin Aeronautics  
1 Lockheed Blvd, MZ2246  
Fort Worth, TX 76101-0748  
817-763-1791  
[gale.harris@lmco.com](mailto:gale.harris@lmco.com)

THE JOURNAL OF  
PHYSICAL  
CHEMISTRY

J | A | C | S

JOC  
The Journal of Organic Chemistry

BIOCHEMISTRY  
Including Biophysical Chemistry & Molecular Biology

Journal of  
Medicinal  
Chemistry

ORGANOMETALLICS

analytical  
chemistry

ES&T

Inorganic Chemistry

Macromolecules

Langmuir

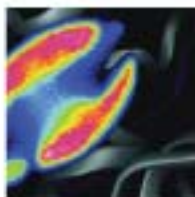
# WHY I SUPPORT ACS PUBLICATIONS



*"I am very appreciative that ACS Publications is taking the initiative by introducing new journals in 'hot' research areas. ACS Nano, ACS Chemical Biology, and ACS Chemical Neuroscience, for example, will surely be very cost effective venues for ground breaking research results."*

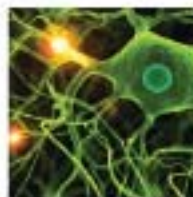
Dana L. Roth, Librarian, California Institute of Technology

## NEW ACS JOURNALS IN 2010 — NOW ONLINE



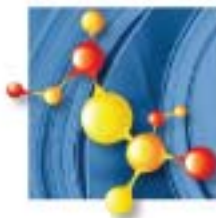
THE JOURNAL OF  
PHYSICAL CHEMISTRY  
*Letters*

Complementing the *Journal of Physical Chemistry*, the #1 most-cited journal in physical chemistry, and providing a convenient, single source to view the most cutting-edge research across physical chemistry/chemical physics and related areas of materials and life science.



ACS Chemical  
**Neuroscience**

Publishing high-quality research articles and reviews that showcase chemical, quantitative biological, biophysical and bioengineering approaches to the understanding of the nervous system and to the development of new treatments for neurological disorders.



ACS Medicinal  
**Chemistry Letters**

Publishing brief communications on experimental or theoretical results of exceptional timeliness in all aspects of medicinal chemistry (pure and applied) and its extension into pharmacology.



JOURNAL OF  
**CHEMICAL EDUCATION**

Co-published by the Publications Division of the American Chemical Society (ACS) and the ACS Division of Chemical Education, presenting current, novel research advances coupled with emerging ideas in teaching methods/course organization.



ACS Publications

MOST TRUSTED. MOST CITED. MOST READ.

[pubs.acs.org/4librarians](http://pubs.acs.org/4librarians)

## 2010 SLA Chemistry Division Executive Board

### Chair

Teri Vogel  
University of CA, San Diego  
858-534-1216  
[tmvogel@ucsd.edu](mailto:tmvogel@ucsd.edu)

### Past-Chair /

### Nominating Committee Chair

Luray Minkiewicz  
E I DuPont De Nemours Co.  
Experimental Station  
302-695-1257  
[luray.m.minkiewicz@usa.dupont.com](mailto:luray.m.minkiewicz@usa.dupont.com)

### Secretary

Lee Pedersen  
Brown University  
401-863-3807  
[lapedersen@brown.edu](mailto:lapedersen@brown.edu)

### Chair-Elect

William Armstrong  
Louisiana State University  
225-578-2738  
[notwwa@lsu.edu](mailto:notwwa@lsu.edu)

### Treasurer

Bob Buchanan  
Auburn University  
334-844-1292  
[buchara@auburn.edu](mailto:buchara@auburn.edu)

## 2010 SLA Chemistry Division Advisory Board

### ACS Liaison

Norah Xiao  
Univ of Southern California  
213-740-2214  
[norah\\_xiao@yahoo.com](mailto:norah_xiao@yahoo.com)

### MRM Section Chair /

### 2009 Program Planner

Jack Bashian  
Smithers Rapra Press  
330-221-2777  
[jbashian@smithersmail.com](mailto:jbashian@smithersmail.com)

### Professional Development

Ted Baldwin  
University of Cincinnati  
513-556-4211  
[baldwitw@ucmail.uc.edu](mailto:baldwitw@ucmail.uc.edu)

### ASIST Liaison

Christina K. Pikas  
Johns Hopkins University  
443-778-4812  
[christina.pikas@jhuapl.edu](mailto:christina.pikas@jhuapl.edu)

### MRM Section Past-Chair

Cathy DiPalma  
Saint-Gobain NorPro  
330-677-3566  
[cathy.dipalma@saint-gobain.com](mailto:cathy.dipalma@saint-gobain.com)

### Sponsorship

Loren Mendelsohn  
City College of NY  
212-650-8244  
[Lmend@sci.ccny.cuny.edu](mailto:Lmend@sci.ccny.cuny.edu)

### Archivist

Luray Minkiewicz  
E I DuPont De Nemours Co  
Experimental Station  
302-695-1257  
[luray.m.minkiewicz@usa.dupont.com](mailto:luray.m.minkiewicz@usa.dupont.com)

### MRM Section Chair-Elect /

### 2010 Program Planner

Bing Wang  
Georgia Institute of Technology  
404-894-0816  
[bing.wang@library.gatech.edu](mailto:bing.wang@library.gatech.edu)

### Strategic Planning

Linda Shackle  
Arizona State Univ  
480-965-7609  
[linda.shackle@asu.edu](mailto:linda.shackle@asu.edu)

### Membership

Judith Currano  
University of Pennsylvania  
215-898-2177  
[currano@pobox.upenn.edu](mailto:currano@pobox.upenn.edu)

### Mentoring

Denise Callihan  
PPG Industries Inc  
724-325-5221  
[callihan@ppg.com](mailto:callihan@ppg.com)

### Program Planner - 2010

Cory Craig  
UC Davis  
530-752-0347  
[cjcraig@ucdavis.edu](mailto:cjcraig@ucdavis.edu)

### Awards

Cory Craig  
UC Davis  
530-752-0347  
[cjcraig@ucdavis.edu](mailto:cjcraig@ucdavis.edu)

### Bulletin Editor

Kiem Ta  
Oklahoma State University  
405-744-9743  
[kiem.ta@okstate.edu](mailto:kiem.ta@okstate.edu)

### Webmaster

Linda Maddux  
Reed College  
[lbm@reed.edu](mailto:lbm@reed.edu)

## 2010 Science and Technology Division Officers and Committee Chairs

### Executive Board

#### Chair

Hilary Davis  
Box 7111, 2 Broughton Dr.  
North Carolina State  
University  
Raleigh, NC 27695  
Phone: 919-513-0654  
Fax: 919-513-1108  
[hilary\\_davis@ncsu.edu](mailto:hilary_davis@ncsu.edu)

#### Secretary

Lisa Johnston  
Univ of Minnesota-Twin Cities  
108 Walter Library, Science &  
Engineering Library  
117 Pleasant Street S.E.  
Minneapolis, MN 55455  
Phone: 612-624-4216  
Fax: 612-625-5583  
[ljohnsto@umn.edu](mailto:ljohnsto@umn.edu)

#### Chair-Elect

Joseph Kraus  
University of Denver  
Penrose Library  
Denver, CO  
Phone: 303-871-4586  
[joseph.kraus@du.edu](mailto:joseph.kraus@du.edu)

#### Treasurer

Cheryl Hansen  
Engineering Systems, Inc.  
Library  
3851 Exchange Avenue  
Aurora, IL 60504-7900  
Phone: 630-851-4566  
Fax: 630-851-4870  
[cahansen@esi-il.com](mailto:cahansen@esi-il.com)

#### Past-Chair

Pam Enrici  
L278 Library  
416 Library Drive  
University of Minnesota -  
Duluth  
Duluth, MN 55812  
USA  
Phone: 218-726-8586  
Fax: 218-726-7481  
[penrici@d.umn.edu](mailto:penrici@d.umn.edu)

## 2010 Science and Technology Division Advisory Board

#### Archivist

Roger E. Beckman  
Life Sciences Library &  
Chemistry Library  
Indiana University  
Jordan Hall A30,  
1001 E. Third St.  
Bloomington, IN 47405-7005  
Phone: 812-855-9792  
Fax: 812-855-6612  
[BeckmanR@indiana.edu](mailto:BeckmanR@indiana.edu)

#### Awards Committee Chair

Sheila Rosenthal  
Software Engineering Institute  
Carnegie Mellon University  
4500 Fifth Ave.  
Pittsburgh, PA 15213-2612  
Phone: 412-268-7846  
Fax: 412-268-5758  
[SLR@sei.cmu.edu](mailto:SLR@sei.cmu.edu)

#### Awards Committee Member

Sara Russell Gonzalez  
Patricia Losi  
Eleanor MacLean  
Kathy Nordhaus  
Susan Smith  
Lisa Renee Johnston

#### Conference Program 2011 Planner

Joseph Kraus  
University of Denver  
Penrose Library  
Denver, CO  
Phone: 303-871-4586  
[joseph.kraus@du.edu](mailto:joseph.kraus@du.edu)

#### Auditor

Sara Davis  
Jacobs Engineering  
5995 Rogerdale Rd.  
Houston, TX 77072  
Phone: 832 351-7025  
[sara.davis@jacobs.com](mailto:sara.davis@jacobs.com)

#### Communications Committee Chair

Rebecca Pernell  
Stanford University  
Libraries, 152a Green  
557 Escondido Mall  
Stanford, CA 94305  
Phone: 650-725-1277  
[pernell@stanford.edu](mailto:pernell@stanford.edu)

#### Communications Committee Members

James Manasco (STN Editor)  
Margaret Smith  
(Webmaster)

#### Contributed Papers Committee Chair

John Speagle  
Univ of California, Santa Cruz  
Santa Cruz, CA  
Phone: 831-459-3583  
[jspeagle@ucsc.edu](mailto:jspeagle@ucsc.edu)

#### Contributed Papers Committee Members

Roger Beckman  
Lisa Johnston  
Division Chair - ex-officio

#### Conference Program 2010 Planner

Hilary Davis  
Box 7111,  
2 Broughton Dr.  
North Carolina State  
University  
Raleigh, NC 27695  
Phone: 919-513-0654  
Fax: 919-513-1108  
[hilary\\_davis@ncsu.edu](mailto:hilary_davis@ncsu.edu)

## 2010 Science and Technology Division Advisory Board (cont'd)

### **e-Discussion Listserv Manager**

Rebecca Pernel  
Stanford University Libraries,  
152a Green  
557 Escondido Mall  
Stanford, CA 94305  
Phone: 650-725-1277  
[pernell@stanford.edu](mailto:pernell@stanford.edu)

### **Governing Documents Committee Chair**

Pam Enrici  
L278 Library  
416 Library Drive  
University of Minnesota -  
Duluth  
Duluth, MN 55812  
Phone: 218-726-8586  
Fax: 218-726-7481  
[penrici@d.umn.edu](mailto:penrici@d.umn.edu)

### **Government Relations Committee Chair**

Karen Buxton  
Information Services  
Consolidated Information  
Center  
2770 University Drive  
Richland, WA 99354  
Phone: 509-372-7451  
[Karen.Buxton@pnl.gov](mailto:Karen.Buxton@pnl.gov)

### **International Relations Committee Chair**

Nevenka Zdravkovska  
Engineering & Physical Sci Lib  
University of Maryland  
1403J Mathematics Bldg  
College Park, MD 20742-7011  
Phone: 301-405-9144  
Fax: 301-405-9164  
[nevenka@umd.edu](mailto:nevenka@umd.edu)

### **Parliamentarian**

Jeffrey Bond  
Texas Christian University  
[j.bond@tcu.edu](mailto:j.bond@tcu.edu)

### **Membership Committee Chair**

Sarah Oelker  
Science Librarian  
Williston Library 421  
Mount Holyoke College  
50 College Street  
South Hadley, MA 01075  
Phone: 413-538-2095  
[soelker@mtholyoke.edu](mailto:soelker@mtholyoke.edu)

### **Membership Committee Members**

P.K. Jain

### **Professional Development Committee Chair**

Susan Shepherd  
Science & Engineering Library  
University of California - San  
Diego  
9500 Gilman Drive  
La Jolla, California 92093-  
0175E  
Phone: 858-534-2480  
[sushepherd@ucsd.edu](mailto:sushepherd@ucsd.edu)

### **Professional Development Committee Members**

Tony Aponte  
Lorraine Pellack  
Stephanie Publicker

### **Nominating Committee Chair**

Christine Whitaker  
School of Medicine Library  
University of South Carolina  
Columbia, SC 29208  
United States of America  
Phone: 803-733-3346  
Fax: 803-733-1509  
[Christine.Whitaker@uscm.edu](mailto:Christine.Whitaker@uscm.edu)  
[sc.edu](http://sc.edu)

### **Nominating Committee Members**

Ann Koopman  
Debal Chandra Kar  
Nancy Wilmes

### **Strategic Planning Committee Chair**

Sue Brewsaugh  
Manager, Library & Learning  
Centers  
10800 Valley View St.  
Cypress, California 90630-  
5016  
Phone: 714-229-7574  
[sue.brewsaugh@boeing.com](mailto:sue.brewsaugh@boeing.com)

### **Strategic Planning Committee Members**

Dorothy McGarry

### **Web Master**

Margaret Smith  
Bobst Library, New York  
University  
70 Washington Square South  
New York, NY 10012  
Phone: 212-998-2619  
[margaret.smith@nyu.edu](mailto:margaret.smith@nyu.edu)

### **Public Relations Committee Chair**

Diane Foster  
Dirac Science Library  
Florida State University  
116 Honors Way  
Tallahassee, FL 32306  
Phone: 850-644-0022  
[dkfoster@fsu.edu](mailto:dkfoster@fsu.edu)

### **Public Relations Committee Members**

Thea Allen  
Bill Jacobs

### **Student Relations Committee Chair**

Thea Allen  
ASRC Management Services  
(contractor)  
US EPA Headquarters and  
Chemical Libraries  
US EPA, MC3404T  
1200 Pennsylvania Ave., NW  
Washington, DC 20460  
Phone: 202-566-0502  
[theaallen@gmail.com](mailto:theaallen@gmail.com)

**Student Relations  
Committee Members**

Michele Hadburg  
Rebecca Miller  
Sarah Oekler  
Susan Powell

**Vendor Relations Chair**

Carol Lucke  
US Naval Research Laboratory  
Research Library  
Washington, DC 20375  
USA  
Phone: 202-767-2348  
Fax: 202-767-3352  
[carol.lucke@nrl.navy.mil](mailto:carol.lucke@nrl.navy.mil)

**Vendor Relations  
Committee Members**

Nevenka Zdravkovska

**2010 Science and Technology Division Liaisons**

**ALA/ACRL Science & Technology Section  
Liaison**

Open

**SLA Cataloging Committee Liaison**

Thea Allen  
[theaallen@gmail.com](mailto:theaallen@gmail.com)

**SLA Ethics Ambassador**

Anna Ren  
[annawu@northwestern.edu](mailto:annawu@northwestern.edu)

**SLA Alignment Ambassador**

Richard Hulser  
[rphulser@aol.com](mailto:rphulser@aol.com)

**SLA Technical Standards Committee  
Liaison**

Susan Fingerman  
[smfinfo@verizon.net](mailto:smfinfo@verizon.net)

**Medical Library Association Liaison**

Carol Vreeland  
[carol\\_vreeland@ncsu.edu](mailto:carol_vreeland@ncsu.edu)

**SLA Diversity Leadership Committee  
Liaison**

P.K. Jain  
[pkjain1310@gmail.com](mailto:pkjain1310@gmail.com)

**SciTech News**

**Editor**

James E. Manasco  
Head, Collection Development  
LL38 Ekstrom Library  
2301 S. Third Street  
University of Louisville  
Louisville, KY 40292  
Phone: (502) 852-8731  
Fax: 502-852-8714  
[james.manasco@louisville.edu](mailto:james.manasco@louisville.edu)

**Assistant Editors**

Ann Koopman  
Scott Memorial Library  
Thomas Jefferson University  
1020 Walnut Street, Room M110  
Philadelphia, PA 19107-5567  
Phone: 215-503-0441  
Fax: 215-923-3203  
[Ann.Koopman@jefferson.edu](mailto:Ann.Koopman@jefferson.edu)

Abby Thorne  
Bluegrass Comm. & Tech. College  
Lexington, KY  
Phone: 859-539-5810  
[abby.thorne@gmail.com](mailto:abby.thorne@gmail.com)

**Advertising Manager**

Carol Lucke  
US Naval Research Laboratory  
Research Library  
Washington, DC 20375  
Phone: 202-767-2348  
Fax: 202-767-3352  
[carol.lucke@nrl.navy.mil](mailto:carol.lucke@nrl.navy.mil)

**Business Manager**

Cheryl Hansen  
Engineering Systems, Inc. Library  
3851 Exchange Avenue  
Aurora, IL 60504-7900  
Phone: 630-851-4566  
Fax: 630-851-4870  
[cahansen@esi-il.com](mailto:cahansen@esi-il.com)

## SLA on the Web: *SciTech News* Division Websites

### **Chemistry Division**

Home Page: <http://www.sla.org/division/dche/index.htm>

Newsletter: <http://www.sla.org/division/dche/newsletters/index.html>

Discussion List Instructions:

Send an e-mail to: [Lyris@lists.sla.org](mailto:Lyris@lists.sla.org). In the body of the message: Subscribe sla-dche <your e-mail address> <FirstName> <LastName>

### **Chemistry Division - MRM Section**

Home Page: <http://units.sla.org/division/dche/mrm/index.htm>

Discussion List Instructions:

Send an e-mail to: [Lyris@lists.sla.org](mailto:Lyris@lists.sla.org). In the body of the message write only: Subscribe SLA-DMRM <your e-mail address> <FirstName> <LastName>

### **Engineering Division**

Home Page: <http://www.sla.org/division/deng/index.html>

Discussion List Instructions:

Send an e-mail to: [Majordomo@iee.org.uk](mailto:Majordomo@iee.org.uk). Leave the subject line empty. In the body of the message write only: Subscribe sla-eng

### **Engineering Division - Aerospace Section**

Home Page: <http://www.sla.org/division/deng/Aerospace.html>

Discussion List Instructions:

Send an e-mail to: [Listserv@sti.nasa.gov](mailto:Listserv@sti.nasa.gov). Leave the subject line empty. In the body of the message write only: Subscribe SLA-AERO Your\_Name

### **Science-Technology Division**

Home Page: <http://www.sla.org/division/dst/>

Discussion List Instructions:

Send an e-mail to: [lyris@sla.lyris.net](mailto:lyris@sla.lyris.net). In the body of the message: Subscribe sla-dst <your e-mail address> <FirstName> <LastName>