

1-1-2003

Signaling and regulation of G protein-coupled receptors in airway smooth muscle.

Charlotte K Billington

Thomas Jefferson University, charlotte.billington@mail.tju.edu

Raymond B Penn

Thomas Jefferson University, ray.penn@mail.tju.edu

Let us know how access to this document benefits you

Follow this and additional works at: <http://jdc.jefferson.edu/medfp>Part of the [Medical Genetics Commons](#)

Recommended Citation

Billington, Charlotte K and Penn, Raymond B, "Signaling and regulation of G protein-coupled receptors in airway smooth muscle." (2003). *Department of Medicine Faculty Papers*. Paper 40. <http://jdc.jefferson.edu/medfp/40>

This Article is brought to you for free and open access by the Jefferson Digital Commons. The Jefferson Digital Commons is a service of Thomas Jefferson University's [Center for Teaching and Learning \(CTL\)](#). The Commons is a showcase for Jefferson books and journals, peer-reviewed scholarly publications, unique historical collections from the University archives, and teaching tools. The Jefferson Digital Commons allows researchers and interested readers anywhere in the world to learn about and keep up to date with Jefferson scholarship. This article has been accepted for inclusion in Department of Medicine Faculty Papers by an authorized administrator of the Jefferson Digital Commons. For more information, please contact: JeffersonDigitalCommons@jefferson.edu.

Review

Open Access

Signaling and regulation of G protein-coupled receptors in airway smooth muscle

Charlotte K Billington and Raymond B Penn*

Address: Department of Medicine, Division of Critical Care, Pulmonary, Allergic & Immunologic Diseases, and Kimmel Cancer Center, Jefferson Medical College, Thomas Jefferson University, Philadelphia, PA 19107

Email: Charlotte K Billington - charlotte.billington@mail.tju.edu; Raymond B Penn* - ray.penn@mail.tju.edu

* Corresponding author

Published: 14 March 2003

Received: 14 August 2002

Respir Res 2003, **4**:2

Accepted: 14 October 2002

This article is available from: <http://www.respiratory-research/content/4/1/2>

© 2003 Billington et al., licensee BioMed Central Ltd. This is an Open Access article: verbatim copying and redistribution of this article are permitted in all media for any purpose, provided this notice is preserved along with the article's original URL.

Abstract

Signaling through G protein-coupled receptors (GPCRs) mediates numerous airway smooth muscle (ASM) functions including contraction, growth, and "synthetic" functions that orchestrate airway inflammation and promote remodeling of airway architecture. In this review we provide a comprehensive overview of the GPCRs that have been identified in ASM cells, and discuss the extent to which signaling via these GPCRs has been characterized and linked to distinct ASM functions. In addition, we examine the role of GPCR signaling and its regulation in asthma and asthma treatment, and suggest an integrative model whereby an imbalance of GPCR-derived signals in ASM cells contributes to the asthmatic state.

Introduction

G protein coupled receptors (GPCRs) comprise a superfamily of proteins capable of transducing a wide range of extracellular signals across the plasma membrane of the cell into discrete intracellular messages capable of regulating numerous, diverse cell functions. Over 800 GPCRs have been cloned to date and over 1000 are suspected in the human genome [1]. The majority of all prescribed drugs target either activation of GPCRs or their downstream signals. This holds true for drugs used in the management of airway diseases such as asthma; it is generally accepted that GPCRs on airway smooth muscle (ASM) are the direct targets of the majority of anti-asthma drugs.

Until recently most research efforts examining GPCR expression, function, and regulation in ASM have focused on those receptors capable of dynamic regulation of ASM contractile state and consequently, airway resistance.

However, the growing appreciation of ASM as a pleiotropic cell capable of regulating airway resistance via "synthetic functions" has provided a much wider context in which to consider the relevance of numerous ASM GPCRs. GPCRs whose activation has little or no direct impact on contractile state may instead modulate ASM growth or the secretion of various cytokines, chemokines, eicosanoids, or growth factors that orchestrate airway inflammation through actions on both mesenchymal and infiltrating cells. These effects may ultimately influence airway resistance by: 1) promoting airway remodeling that impacts the mechanics of ASM contraction *in vivo*; or 2) regulating the inflammatory response to either disrupt the balance of local pro-contractile/relaxant molecules or alter electro- or pharmaco-mechanical coupling in ASM. Accordingly, it is no longer permissible to judge the relevance of a given ASM GPCR based on its ability to dynamically modulate ASM contractile state and airway resistance. Indeed, our

newfound appreciation of multiple experimental endpoints defining ASM function has aided efforts to identify relevant ASM GPCRs and their signaling properties.

In this review we will summarize the signaling and functional effects of various GPCRs that have been identified in ASM cells. In addition, we will consider how the regulation (or *dysregulation*) of GPCR signaling potentially impacts asthma pathogenesis and treatment.

Models for analyzing GPCR signaling in ASM

Models for analyzing GPCR signaling in ASM run the spectrum of integrative to reductionist approaches, each having certain advantages and disadvantages. Integrative *in vivo* models in which GPCR ligands are administered systemically or through inhalation can suggest the presence of ASM GPCRs capable of mediating bronchoconstrictive or relaxant effects. Such experiments can provide important insight into the role of a given GPCR in regulating lung resistance, and suggest the utility of targeting a receptor in order to control bronchospasm. However, the direct target cell of delivered agents is often unclear, and frequently the response of ASM is secondary to actions on other cell types. For example, inhaled agents can provoke the release of bronchoreactive substances from multiple cell types that in turn engage ASM GPCRs, or regulate autonomic control of ASM contraction through actions on pre- or post-ganglionic neurons or reflex arcs [2–4].

A more controlled environment in which to characterize ASM GPCRs is provided by *ex vivo* analyses of tracheal or bronchial smooth muscle isolated as strips or as part of a complex including cartilaginous ring. This approach reduces, but does not eliminate, neural or paracrine effects on ASM that can dominate functional ASM responses *in vivo*. Such effects can persist because preparations still include autonomic effector and sensory nerve fiber endings, epithelium, fibroblasts, and blood cells capable of releasing constricting/relaxing agents in response to exogenous agents or, possibly, mechanical forces [5]. Consequently, intelligent design of such *ex vivo* analyses can help clarify the *in vivo* effects of numerous agents and identify their target cells. For example, immunohistochemical analysis and tissue bath mechanics of excised ASM strips suggest that the pronounced bronchoconstriction elicited by inhaled adenosine or adenosine monophosphate in asthmatic subjects or sensitized animals can be attributed primarily to histamine release from mast cells in close proximity to or imbedded in ASM tissue [6–11].

Arguably, the development of ASM cell cultures has provided the most reliable system for identifying and characterizing ASM GPCRs. Typically generated by enzymatic dissociation of ASM cells from sections of tracheae or

bronchi, ASM cultures provide a pure population of ASM cells that can be greatly expanded, and thus are amenable to extensive pharmacological, biochemical, and molecular analyses not possible *in vivo* or with tissues [12,13]. Cells of ASM cultures of several species (including human, canine, bovine, guinea pig, and mouse) have been shown to be morphologically and functionally similar to ASM *in vivo*; they stain for smooth muscle- α -actin and myosin heavy chain, and exhibit signaling and functional responses that are consistent with ASM function observed or suspected *in vivo* [12–15].

The power of ASM cultures as an experimental model capable of verifying existing and identifying new signaling paradigms, while also establishing their physiologic relevance, is under-appreciated. This power is largely attributed to the fact that ASM cells possess physiologic levels of most signaling components (e.g., receptors, effectors, and downstream signaling intermediates), yet many signaling pathways are readily characterized with robust signal to noise ratios. Most importantly, numerous ASM cell functions (including growth, synthesis/secretion of autocrine/paracrine factors, and to a limited extent, contraction) are also easily quantified and can be linked to their associated signaling events. In many other cell culture systems such linkage of signaling to relevant cell function cannot be achieved. For example, the majority of studies revealing novel receptor-mediated signaling paradigms have utilized expression systems such as COS or HEK293 cells to express recombinant receptors or signaling components in order to delineate pathway interactions and their modes of regulation. It is unclear whether such paradigms occur under relevant conditions in which most signaling components are expressed at low levels and their actions may be constrained by compartmentalization [16,17]. Moreover, whether such signaling has any relevance to cell function is unclear, because such cells typically either lack discrete measurable functions or their functions are known to be dysregulated (e.g., physiologic regulation of growth cannot be studied in a transformed cell). Recent studies [18–20] have begun testing the applicability and physiologic relevance of various GPCR signaling paradigms in cultured ASM cells.

However, ASM cultures as a model system are far from perfect. That ASM cells in culture lack the context of the *in vivo* condition is not only a strength but also an inherent limitation of this reductionist model. Moreover, like most primary cells grown in culture, ASM cells undergo a degree of de-differentiation that coincides with a loss or increase in various signaling elements and functional apparatus [3]. Specific changes in ASM cells relevant to GPCR signaling that are known to occur in culture include a rapid and progressive decrease in the expression of Gq-coupled receptors such as the m3 muscarinic acetylcholine recep-

tor (m3 mAChR) [21] and the cysteinyl leukotriene type 1 receptor (CLT1R; Stuart Hirst, personal communication). In addition, contractile function of cultured ASM cells is rapidly diminished, coinciding with reduced expression of smooth muscle alpha-actin and myosin heavy chain, calponin, h-caldesmon, beta-tropomyosin, and myosin light chain kinase (MLCK) [22]. However, Shore, Fredberg, and colleagues have developed a model for examining agonist-induced changes in stiffness of cultured ASM cells that has provided useful information linking regulation of GPCR signaling with ASM contractile state [23]. Interestingly, Stephens [24], Halayko, Solway [25–27], and colleagues have demonstrated that prolonged serum starvation of cultured canine ASM cells can beget a subpopulation of cells that reacquire high m3 mAChR and contractile/cytoskeletal protein expression and thus contractile function. These findings suggest a potentially powerful strategy for delineating elements critical to Gq-coupled receptor signaling and pharmaco-mechanical coupling in ASM.

Gq-coupled receptors

Although numerous GPCRs have the ability to couple to more than one heterotrimeric G protein, a given GPCR is typically classified based on the G protein subfamily (e.g., Gs, Gi/o, or Gq/11) it preferentially activates. A diagram of Gq-coupled receptor signaling, and the associated functional outcomes in ASM, is provided in Fig. 1. Signaling via Gq-coupled receptors in ASM is of particular interest due to its prominent role in promoting ASM contraction. Transmembrane signaling occurs in the classical GPCR-G protein-effector protein paradigm. An agonist-bound receptor undergoes a conformational change that promotes its association with and activation of the heterotrimeric G protein Gq. The extreme C-terminus of the G alpha subunit is the receptor recognition domain and dictates receptor-G α specificity. Receptor-G α association promotes the release of GDP from G α and binding of GTP. The active GTP-bound G α dissociates from G $\beta\gamma$ and in turn activates an effector molecule. The G $\beta\gamma$ heterodimer (numerous combinations of 7 different β and 12 different γ subunits exist) also has the capacity to regulate the activity of various effectors and numerous other signaling elements (discussed below). The duration of one cycle of receptor activation of effector is dictated by the GTPase activity of G α , as the hydrolysis of GTP to GDP promotes reconstitution and membrane localization of the G $\alpha\beta\gamma$ trimer. Traditionally, alpha subunit GTPase activity was presumed "intrinsic", but it is now appreciated that this activity can be regulated by GTPase proteins (GAPs) in a manner similar to that demonstrated for small G proteins [28]. Phospholipase C (PLC) is the principal effector of Gq-mediated signaling. Eleven different isoforms of PLC exist and exhibit distinct patterns of regulation; members of the PLC β subfamily tend to mediate the actions of activated

Gq [29]. Activated PLC hydrolyzes phosphoinositol 4,5-bisphosphate (PIP₂) into 1,2-diacylglycerol (DAG) and inositol 1,4,5-trisphosphate (IP₃). The net effect of increased IP₃ and DAG levels is to increase intracellular Ca²⁺ through release from internal stores and influx from membrane-bound channels [3], and in ASM to activate the cell's contractile machinery through both Ca²⁺ and protein kinase C (PKC) -dependent mechanisms [30–33] (see Fig. 1 Legend for details).

Studies of agonist-induced increases in airway resistance, smooth muscle contraction *ex vivo*, and receptor binding and second messenger analyses of cultured ASM cells have helped identify numerous Gq-coupled receptors in ASM (Table 1). Resting ASM tone *in vivo* is determined primarily by parasympathetic cholinergic innervation acting on ASM m3 mAChRs. Other ASM Gq-coupled receptors capable of inducing significant ASM contraction (*in vivo* or *ex vivo*) include the H1 histamine receptor, CLT1R, B2 bradykinin receptors, and ET-A endothelin receptor. Additional Gq-coupled receptors such as the A3 adenosine, NK-1, NK-2 (Neurokinin-1 and -2) and P2 purinergic have been identified, but their importance in mediating contraction under physiologic or pathologic conditions is unclear. In some cases the evidence for their expression in ASM is either indirect or is difficult to interpret given the labile nature of Gq-coupled receptor expression in ASM cultures.

However, as noted above ASM cells do more than contract and studies of other functional outcomes in ASM suggest a potentially important role for numerous Gq-coupled receptors in modulating ASM synthetic functions. Both thrombin (capable of activating Gq through protease-activated receptors (PARs) [34]) and lysophosphatidic acid (LPA) (capable of activating Gq through endothelium differentiation gene (EDG) receptors) are strong stimulators of cultured ASM DNA synthesis and cell proliferation. These effects appear in part Gq-dependent (Billington and Penn, unpublished observations) and may be mediated by the capacity of Gq signaling to stimulate the p42/p44 MAPK (via PKC-mediated phosphorylation of Raf-1) and p70S6K pathways and therefore induce prometogenic transcription factor activation, cyclin D1 induction, and upregulate the translational machinery necessary for cell cycle progression [36,37]. Moreover, numerous Gq-coupled receptor agonists including thrombin, lysophosphatidic acid, leukotriene D4 (LTD4), endothelin, histamine, thromboxane (activating Thromboxane A2 / Prostaglandin (TP) receptors)[19], and sphingosine-1-phosphate (SPP) (activating EDG receptors) have been shown to potentiate the mitogenic effects of receptor tyrosine kinase signaling, although it has not been established that Gq activation *per se* mediates this effect.

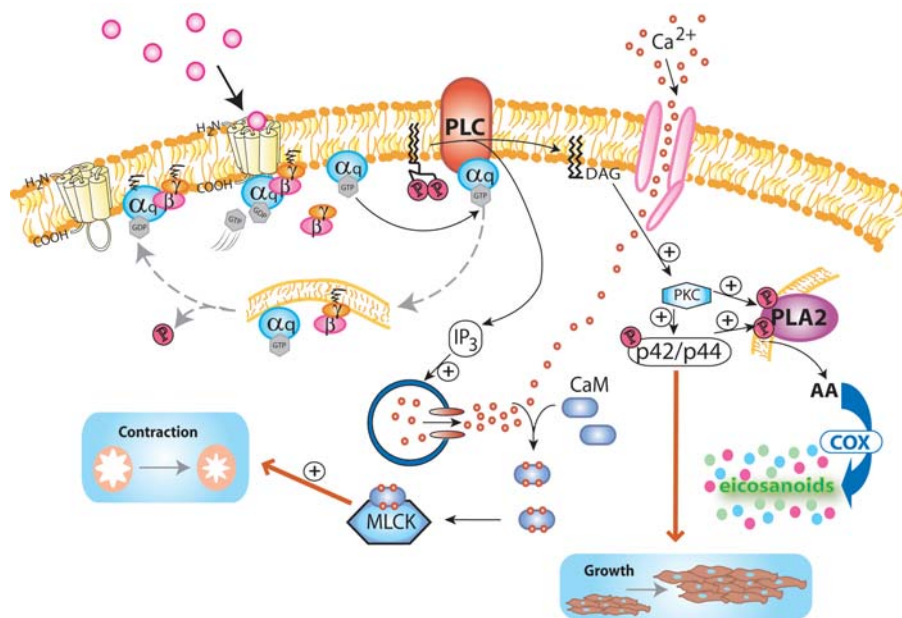


Figure 1

Gq-coupled receptor signaling in airway smooth muscle. Airway smooth muscle (ASM) is innervated by postganglionic parasympathetic nerves that release acetylcholine (acting on m3 mAChRs) to control resting ASM tone. In addition to the m3 muscarinic acetylcholine receptor (mAChR), other Gq-coupled receptors are expressed in ASM (see Table 1), and can similarly mediate contraction and other depicted ASM functions. Transmembrane signaling of G protein-coupled receptors (GPCRs) involves sequential activation of receptor, G protein, and effector. Upon agonist binding, the receptor undergoes a conformational change exposing a high-affinity binding site for a G-protein in its GDP-bound inactive state. The receptor specifically interacts with the C-terminus of the α subunit of the G-protein heterotrimer. G-protein binding to receptor releases the nucleotide leaving an empty nucleotide binding pocket readily occupied by GTP, which exists at a higher cytosolic concentration than GDP. This exchange of the G-protein-bound GDP for GTP induces a conformational change in the switch region of $G\alpha$ and causes the dissociation of $G\alpha$ from the $G\beta\gamma$ dimer. The $G\beta$ and $G\gamma$ subunits are tightly associated and remain anchored into the lipid bilayer due to the prenylation of the $G\gamma$ subunit – a permanent lipid modification. In the case of $G\alpha_q$, the GTP-bound $G\alpha_q$ -protein's effector interaction domain is exposed and activates phospholipase C (PLC). PLC promotes the hydrolysis of phosphoinositol 4,5-bisphosphate (PIP₂) into the intracellular messengers 1,2-diaclyglycerol (DAG) and inositol 1,4,5-trisphosphate (IP₃). DAG remains membrane bound and promotes the translocation of protein kinase C (PKC) from the cytoplasm to the membrane and its subsequent activation. Activated PKC is capable of phosphorylating a number of substrates including calponin; PKC-mediated phosphorylation of calponin results in a loss of calponin's ability to inhibit actomyosin ATPase [30,269]. PKC also phosphorylates intermediates of MAPK signaling pathways, which activate various gene transcription factors involved in promoting ASM growth. Gq-coupled receptors are also able to impact receptor tyrosine kinase-induced ASM growth via a synergistic activation of p70S6K. Both PKC and p42/p44 MAPK phosphorylate and stimulate the catalytic activity of phospholipase A2 (PLA2). Calcium binding to PLA2 triggers its association with the plasma or nuclear membrane and the subsequent cleaving and release of arachadonic acid (AA). The conversion of AA to prostaglandins and thromboxanes is facilitated by cyclo-oxygenase-2, a highly regulated enzyme upregulated by pro-inflammatory agents including lipopolysaccharide, cytokines and growth factors. The other product of PIP₂ hydrolysis, IP₃, translocates and binds to IP₃ receptors located on sarcoplasmic calcium stores. Activation of IP₃ receptors results in the opening of Ca²⁺ channels and calcium efflux into the cytosol. Intracellular calcium stores are the major source of elevated calcium mediating ASM contraction, although influx from receptor-operated calcium channels can contribute. The rise in intracellular calcium promotes calcium binding to calmodulin forming calcium-calmodulin complexes that activate myosin light chain kinase (MLCK). MLCK phosphorylates myosin light chains and enables actin to activate the myosin ATPase activity required for cross-bridge cycling and contraction. Via its interaction with various guanine-nucleotide exchange factors for Rho (RhoGEFs), Gq has also recently been shown to activate the small G protein Rho [270]. In ASM, Gq-mediated activation of Rho has been implicated in regulating actin cytoskeletal rearrangement [40]. Rho is also a key mediator of calcium sensitization – a phenomenon observed following stimulation with numerous GPCRs whereby heightened contractile effects can be induced for a given level of calcium mobilization. Rho activates Rho kinase, which in turn phosphorylates the myosin binding subunit of myosin light chain phosphatase (MLCP) to inhibit phosphatase activity, resulting in net increased phosphorylation of myosin light chain (MLC) and an associated increase in cross-bridge cycling [271]. Although activation of G_{12/13} is most commonly associated with Rho activity, studies of ASM suggest that Gq and Gi can also participate in Rho-mediated functions [40,272,273].

Table 1:

GPCR	References	Couples to	Functions in ASM ¹	Comment
5-HT	[125,126,213–215]	Gi ²	CXN, GP	5-HT _{2c} identified, other subtypes likely
A1 adenosine	[42,216,217]	Gi	CXN	Low levels suggested in human ASM
A2b adenosine	[42]	Gs ³	RLXN	Mediates effects of autocrine and paracrine adenosine
A3 adenosine	[218,219]	Gq ⁴	unclear	
α-1 adrenergic	[220–223]	Gq	unclear	Only response in lung or ex vivo occurs with βAR antagonist present
β ₂ adrenergic	[56,185,224,225]	Gs	RLXN, Cyt, GI	
BK bradykinin	[39,226–231]	Gq	CXN	Robust activation of PLC and PLA2 in cultured ASM; putative B3 yet to be cloned
CLTIR	[232–236]	Gq	CXN, GP	CLTIR antagonists most therapeutic of all GqCR antagonists
ET-A/B	[237–242]	Gq	CXN, GP	
EDG 1–7	[38,243–245]	Gq, Gi, G _{12/13}	GS, Cyt	Most subtypes exhibit promiscuity toward G proteins
EP2	[20,246,247]	Gs	RLXN, GI, Cyt	Indirect evidence for expression of EP1, EP3, and EP4
H1 histamine	[248,249]	Gq	CXN, GP	Exhibits homologous and heterologous desensitization
IP Prostacyclin	[41,250]	Gs	GI	Responsive to autocrine PGI ₂ induced by cytokines via COX-2 induction
m2 muscarinic	[21,251,252]	Gi	unclear	Mediator of acute adenylyl cyclase inhibition, chronic sensitization
m3 muscarinic	[251–256]	Gq	CXN, GP	Rapid reduction of expression in culture
NK-1/2	[257–260]	Gq	CXN, GP	
PAR-1,2,3	[34,261,262]	Gq, Gi, G _{12/13}	GS, GP	Thrombin most mitogenic GPCR agonist; subtype promiscuity towards G proteins
P2 purinergic	[218,219]	Gq	unclear	PI may also be expressed
TP	[41,263–266]	Gq, Gi, G _{12/13} (?)	CXN, GP	Coupling specificity poorly characterized in ASM
VIP	[43,267,268]	Gs	GI	

¹ Abbreviations: CXN – contraction; Cyt – regulation of ASM cytokine/chemokine synthesis; GI – inhibition of ASM growth (DNA synthesis/cell proliferation); GP – potentiation of growth stimulated by polypeptide growth factors; GS – growth stimulation; RLXN – relaxation ² Coupling to Gi is suggested by sensitivity of signal transduction or functional effects to pertussis toxin ³ All receptors noted to couple to Gs have been shown to stimulate cAMP production in ASM. ⁴ Coupling of receptors to Gq is suggested by either agonist-stimulated phosphoinositide production or calcium flux.

Gq-dependent activation of PKC and p42/p44 also promotes phosphorylation and activation of phospholipase A2 (PLA2), which contributes to rapid eicosanoid synthesis in ASM cells stimulated with bradykinin (acting on B2 bradykinin receptors)[39]. Other effects reported to involve Gq activation by ASM GPCRs include actin polymerization induced by LPA, endothelin, or carbachol, which appears to occur via a Rho-dependent mechanism [40]. This suggests that effectors other than PLC can be directly activated by Gq in ASM.

Gs-coupled receptors

Whereas Gq-coupled receptors are the principal mediators of ASM contraction, Gs-coupled receptors on ASM play a central role in promoting relaxation of contracted ASM and in conferring prophylactic "bronchoprotection". Inhaled beta-agonists, which activate the Gs-coupled beta-2-adrenergic receptor (β₂AR) on ASM, are the most widely used agents in asthma therapy and are universally recognized as the treatment of choice for acute asthma attacks. Several other Gs-coupled receptors, including the E-Prostanoid 2 (EP2) prostaglandin E2 (PGE₂) [20], IP prostacyclin ([41] and Pascual and Penn, unpublished

observations), A2b adenosine [42], and vasoactive intestinal peptide (VIP)[43] receptors have been identified in ASM and represent intriguing, albeit elusive, therapeutic targets (Table 1).

Gs-coupled receptor signaling and its regulation have been extensively characterized in numerous cell types, including ASM [44]. The overwhelming majority of studies delineating the basic tenets of Gs-coupled receptor signaling have examined β₂AR signaling, based on the prevalence of endogenously expressed β₂ARs, the established relevance of β₂ARs in the function of several organ systems, the existence of highly selective β₂AR ligands, and the early cloning of the β₂AR enabling heterologous expression of the receptor in various cell systems. Figure 2 depicts the most prominent features of Gs-coupled receptor signaling and functional consequences in ASM cells.

Adenylyl cyclase (AC) is the principal effector of Gs-coupled receptor transmembrane signaling. Nine isoforms (type I through IX) of AC are known to exist [45]. RT-PCR has identified transcripts of all AC subtypes except III and VIII in human ASM cultures, although immunoblot anal-

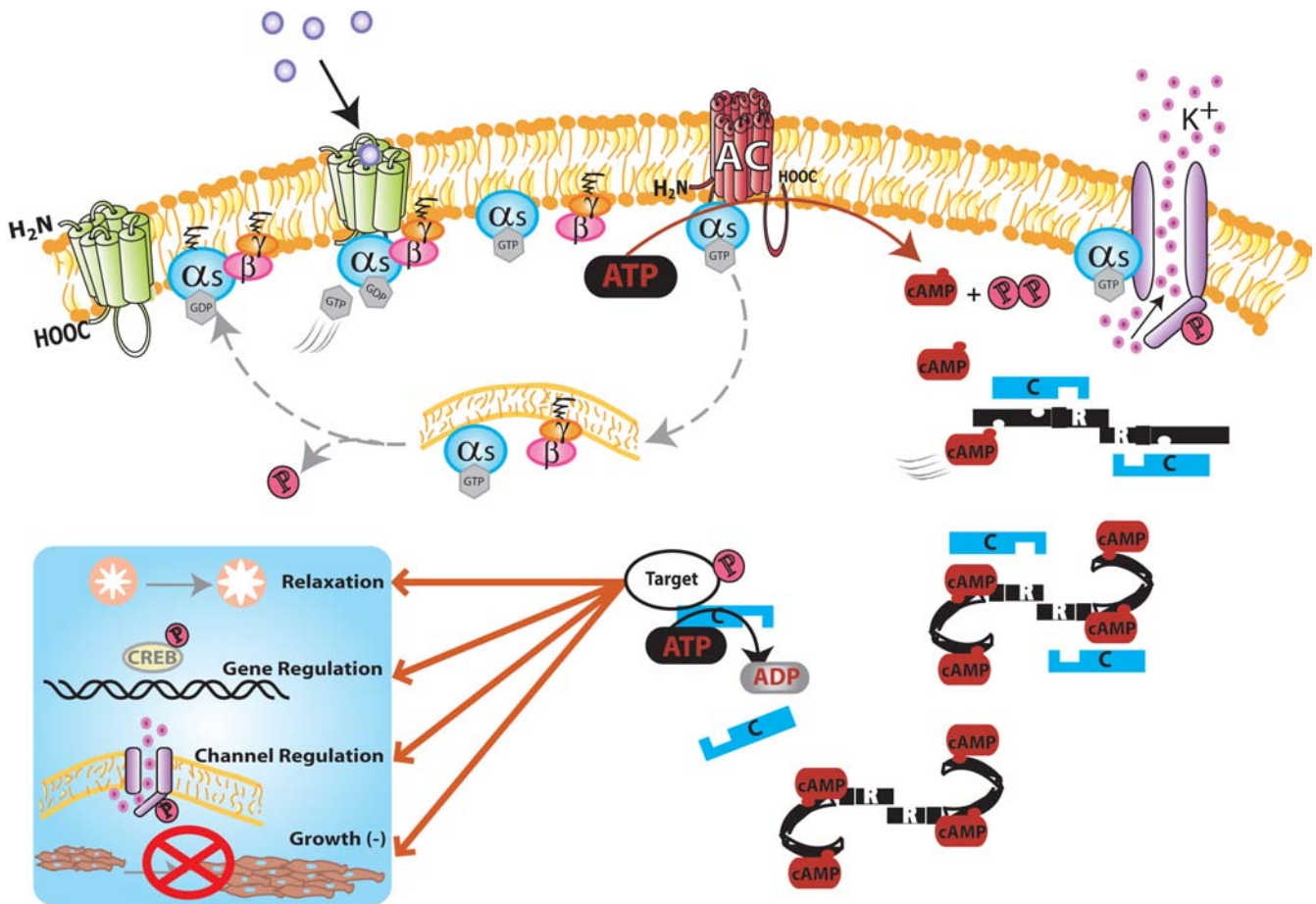


Figure 2

Gs-coupled receptor signaling in airway smooth muscle. Gs-coupled receptors on airway smooth muscle (ASM) are activated by endogenous agents such as circulating catecholamines, prostaglandins and iso-prostanines, adenosine and vasoactive intestinal peptide (VIP). Activated G α_s binds to and activates membrane bound adenylyl cyclase (AC). AC is comprised of eight membrane-spanning α -helices, and two cytosolic domains which are required for catalytic activity and integrate various regulatory signals. The cytosolic domains possess specific binding sites for the G-protein subunits G α_s , G α_i , and G $\beta\gamma$. Of the nine known AC isoforms, AC V and VI appear to be expressed and functionally important in human ASM. Adenylyl cyclase activation catalyzes the formation of cyclic AMP from cytoplasmic ATP. Cyclic AMP is a ubiquitous second messenger whose principal function is to activate protein kinase A (PKA). Inactive PKA exists as a complex comprising two regulatory and two catalytic subunits. The high affinity binding of cyclic AMP to domains in the regulatory region induces a conformational change forcing the release of the active catalytic subunits. PKA-mediated phosphorylation of various intracellular proteins has widespread effects in ASM. PKA can phosphorylate certain Gq-coupled receptors as well as phospholipase C (PLC) and thereby inhibit G protein-coupled receptor (GPCR)-PLC-mediated phosphoinositide (PI) generation, and thus calcium flux. PKA phosphorylates the inositol 1,4,5-trisphosphate (IP₃) receptor to reduce its affinity for IP₃ and further limit calcium mobilization. PKA phosphorylates myosin light chain kinase (MLCK) and decreases its affinity to calcium calmodulin, thus reducing activity and myosin light chain (MLC) phosphorylation. PKA also phosphorylates K_{Ca++} channels in ASM, increasing their open-state probability (and therefore K⁺ efflux) and promoting hyperpolarization. Through its phosphorylation of the transcription factor CREB and its (typically inhibitory) effects on GPCR and receptor tyrosine kinase signaling, PKA regulates the transcription of numerous genes. Recent studies suggest that cAMP/PKA mediates regulation of the expression of numerous immunomodulatory proteins in ASM including IL-6, RANTES, eotaxin, and GM-CSF [53,54,274–276]. Although poorly characterized, the growth inhibitory effect of Gs-coupled receptor activation in ASM is consistent with the known effects of PKA on mitogenic signaling. These effects include inhibition of p42/p44 MAPK signaling via phosphorylation and inhibition of the upstream intermediate raf-1, and via inhibition of promotogenic transcriptional regulation mediated by phospho-CREB. Lastly, Gs-coupled receptor activation is also believed to promote PKA-independent effects, including gating of K_{Ca++} channels directly by G α_s [56], and actin polymerization via an unestablished mechanism [55].

ysis suggests the presence of only V/VI (existing antibodies do not distinguish between type V and VI), and analyses of AC regulation in human ASM cultures (discussed below) are consistent with the expression of AC V and VI [46,47]. Interestingly, AC subtype expression in ASM cultures may be species specific, as regulatory features of AC in bovine, canine, and guinea pig ASM suggest prominent expression of AC II [48–51], whereas a minimal [46] or no [47] level of AC II transcripts were detected in human ASM (see below).

Adenylyl cyclase isoforms are subject to multiple forms of regulation (discussed below), although dynamic activation of AC under physiologic conditions occurs almost exclusively by interaction with G α s [52]. G α s activation of AC catalyzes ATP to cyclic AMP (cAMP), which in turn binds to the regulatory subunits of the cAMP-dependent protein kinase (protein kinase A or PKA). The cAMP-bound regulatory subunits then dissociate from and thereby activate the catalytic subunits of the enzyme, which in turn phosphorylate and regulate the activity of numerous proteins, including the transcription factor CREB. PKA activity is presumed responsible for the majority of cellular actions elicited by Gs-coupled receptor activation, which in ASM include relaxation, altered transcription of numerous genes that impact airway inflammation and remodeling [53,54], inhibition of cell growth, and ion channel gating [3]. However, cAMP/PKA-independent signaling by Gs-coupled receptors has also been proposed and may have important functional consequences in ASM. These include beta-agonist-induced actin depolymerization [55], direct activation of Ca²⁺-sensitive K⁺ channels by G α s subunits [56], and possibly other ill-defined signaling events that promote relaxation and are unaffected by exposure of ASM to pharmacological inhibitors of PKA [57].

Gi-coupled receptors

The majority of known GPCRs preferentially couple to members of the Gi family, and Gi appears to be the most abundantly expressed heterotrimeric G protein in most cell types. Members of the G α i family expressed in ASM include G α i-1, G α i-2, and G α i-3 [58,59]. G α i activation is typically associated with inhibition of G α s-stimulated AC activity (for certain AC isoforms) and thus reduced cAMP generation, the functional consequences of which should be predictable but are often difficult to identify in a wide range of experimental models [2,60]. However, numerous other signaling events elicited by G α i activation, with clear functional consequences, have recently been identified (Fig. 3). Gi appears capable of activating Rho through activation of Rho guanine nucleotide exchange factors (GEFs), and in ASM this can mediate both actin polymerization and possibly contractile sensitization [40,61]. Whether Gi activation of Rho is mediated by α or $\beta\gamma$ sub-

units is unclear. $\beta\gamma$ subunits released due to Gi activation are believed to promote many of the $\beta\gamma$ effects identified to date, perhaps reflecting the relatively high levels of Gi in most cells that could provide the levels of free $\beta\gamma$ required for its signaling effect [52]. In *in vitro* systems $\beta\gamma$ subunits have been shown to enhance the activity of selected AC isoforms stimulated by G α s. Moreover, $\beta\gamma$ may also mediate, through what may be an indirect mechanism [62], the AC sensitization observed in neuronal cells chronically exposed to opioids (contributing to tolerance to morphine [63–65]) and in human ASM cells chronically treated with carbachol and other ligands capable of activating Gi-coupled receptors [46]. The purpose of such AC sensitization in ASM is unclear, but may involve the need to maintain a degree of Gs-coupled receptor signaling in the face of persistent Gi-coupled receptor activation.

A role for Gi-coupled receptors in modulating growth in ASM is suggested by studies that demonstrate that pertussis toxin (which ADP-ribosylates and inhibits G α i) partially inhibits ASM DNA synthesis stimulated by numerous GPCR ligands including carbachol (activating the m2 mAChR), LPA, SPP, endothelin, and thrombin [18,38]. The mechanism mediating Gi-stimulated growth of ASM is unclear, although actions of both α and $\beta\gamma$ subunits may be involved. G $\beta\gamma$ has the potential to stimulate p42/p44 MAPK via activation of PLC and PKC, and can also mediate p42/p44 activation through Src-dependent transactivation of the epidermal growth factor (EGF) receptor [66]. However, none of these mechanisms has been established in ASM. On the contrary, transactivation of the EGF receptor is not induced by thrombin, carbachol, or LPA in human ASM cultures, and increased p42/p44 MAPK signaling does not appear to mediate the synergistic effect of several GPCR agonists on EGF-stimulated ASM growth [18,19]. These latter findings suggest potentially novel mitogenic signaling events and define cooperativity between GPCRs and receptor tyrosine kinases in mediating ASM growth.

G_{12/13} coupled receptors

Signaling via activation of the G_{12/13} family has not been characterized as extensively as has that by other heterotrimeric G proteins. The effector molecules that interact directly with G₁₂ and G₁₃ are not well established, with the exception of members of a family of guanine nucleotide exchange factors for the small G protein Rho [67]. The GPCRs capable of activating G₁₂ or G₁₃ are also unclear. Immunoblot analysis demonstrates G α ₁₂ and G α ₁₃ protein in rat bronchial smooth muscle tissue, and levels are elevated by repeated antigen challenge (see below)[68]. In ASM cells, those GPCRs activating G_{12/13} have not been characterized, although SPP/LPA-activated EDG receptors, thrombin-activated PAR receptors, and TP receptors

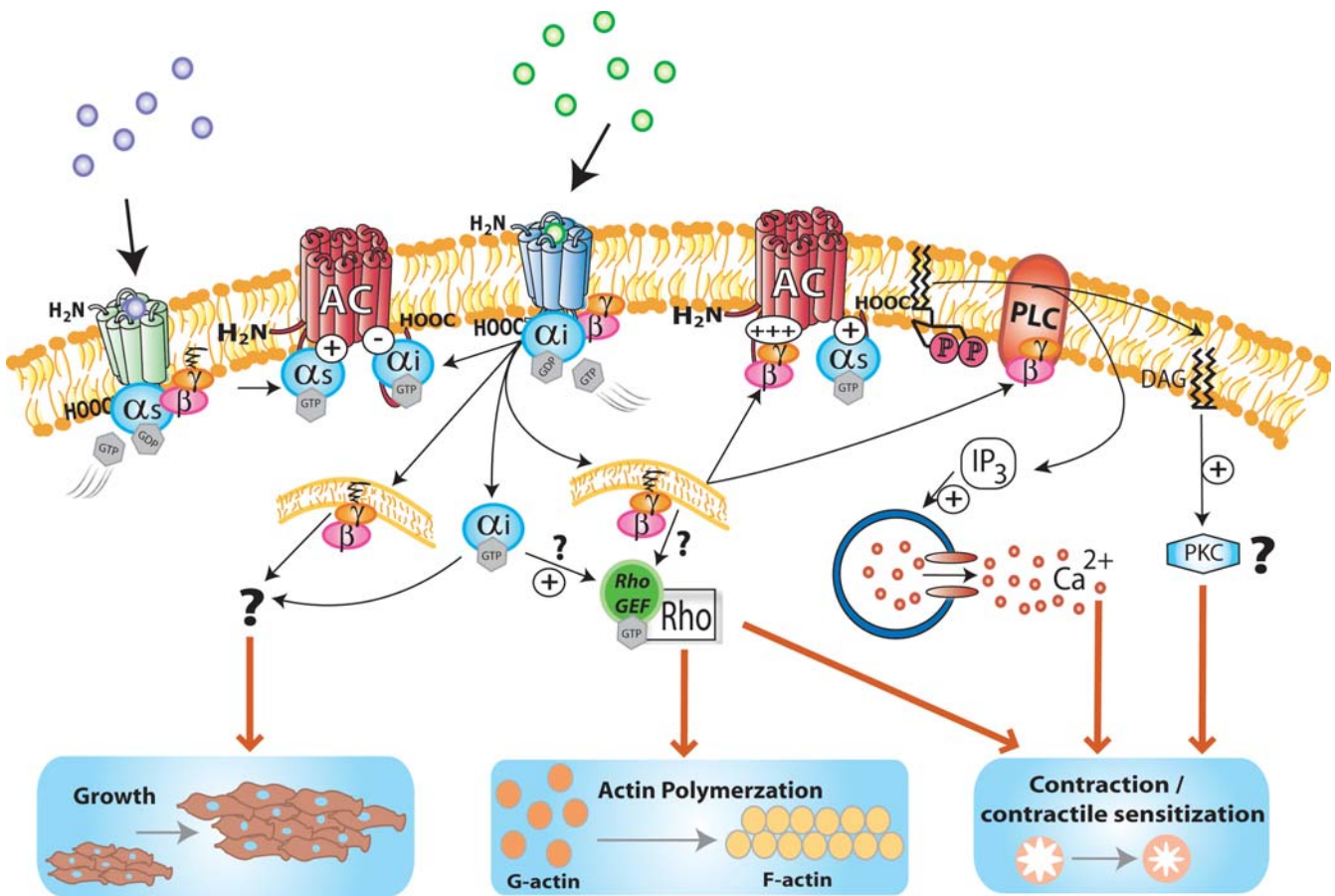


Figure 3

Gi-coupled receptor signaling in airway smooth muscle. Gi-coupled receptors have the capacity to initiate or modulate signaling through the actions of both Gi-derived α and $\beta\gamma$ subunits. Activated $G\alpha_i$ dissociates from the heterotrimeric complex and binds to adenylyl cyclase (AC) V and VI to act as a negative modulator of $G\alpha_s$ -induced signaling. $G\beta\gamma$ subunits modulate AC activity in an isoform-specific manner, inhibiting AC type I but enhancing $G\alpha_s$ -induced activation of AC II, IV and VII. $G\beta\gamma$ can also activate phospholipase C beta ($PLC\beta$) isoforms, resulting in phosphoinositide generation, protein kinase C (PKC) activation via 1,2-diacylglycerol (DAG), and calcium mobilization. Through ill-defined mechanisms, Gi-coupled receptor activation can also promote airway smooth muscle (ASM) growth [18], and cooperate with both other G protein-coupled receptors (GPCRs) [277,278] and receptor tyrosine kinases [19,243] to synergistically stimulate growth. Lastly, Gi activation in ASM can contribute to Rho-dependent changes in actin polymerization [40,279,280] and calcium sensitization [273], although the mechanism of Rho activation by Gi in ASM (or other cell types) is not well established.

are candidates. The profound effect of inhibitors of Rho and Rho kinase on GPCR-mediated changes in contractile sensitization [69,70] and actin polymerization [40] strongly suggest a physiologic role for $G_{12/13}$ signaling in ASM.

Regulation of GPCR signaling

Signaling by GPCRs is a highly regulated process. One critical way in which a cell controls its response to extracellular GPCR ligands is through regulation of the expression and activity of each component of the GPCR-G protein-effector pathway. Either a loss (desensitization) or increase

(sensitization) in responsiveness of transmembrane signaling components can be evoked to presumably preserve the cell/organism from excessive signals or ensure detection and reaction to infrequent or minimal signals. In ASM, studies of regulation of GPCR signaling have focused on changes that occur in receptor and G protein expression and second messenger generation in cells, or on altered contractile/relaxant effects on ASM *in vivo* or *ex vivo*. No studies to date have considered the effect of desensitization or sensitization of GPCR signaling on GPCR-mediated functions in ASM other than contraction.

Regulation at the receptor locus

Changes in expression or activity of the receptor represent a powerful means of regulating GPCR signaling. Altered GPCR responsiveness can occur via altered receptor density (*up-* or *down-regulation*), modifications of the receptor such as phosphorylation that diminishes receptor-G protein interaction (*uncoupling*), and trafficking of receptor away from G protein (*sequestration/internalization*) that enables either recycling of receptor to a responsive form or facilitates receptor loss by lysosomal degradation (Figure 4). These mechanisms have been characterized extensively in studies of the β_2 AR. The degree to which they apply to other GPCRs is both receptor- and cell-dependent [44]. In ASM cells, upon exposure to their agonist, both the β_2 AR and A2b adenosine receptor undergo rapid desensitization [42,71,72], which is defined by a loss in agonist-stimulated cAMP generation, (*agonist-specific* or *homologous* desensitization). Rapid beta-agonist-promoted desensitization of the ASM β_2 ARs is mediated primarily by receptor phosphorylation by G protein-coupled receptor kinases (GRKs) [44], which specifically recognize the agonist-occupied form of GPCRs. Numerous GPCRs in various cell types including ASM [72] have been shown to be regulated by GRKs, and GRKs themselves are subject to multiple forms of regulation, some of which may influence GPCR function in certain disease states (reviewed in [1]). GRK phosphorylation of GPCRs partially uncouples the receptor from $G\alpha$, and also promotes binding of arrestin molecules to the receptor, which more effectively uncouple the receptor from G protein by sterically inhibiting the receptor- $G\alpha$ interaction [73]. For numerous GPCRs, GRK-mediated arrestin binding also initiates receptor internalization/sequestration, which occurs via the association of the receptor-arrestin complex with components of clathrin-coated pits [74,75]. GPCR internalization is not required for GPCR desensitization, but is required for resensitization, as demonstrated for the β_2 AR in ASM [72]. Interestingly, agonist-stimulated arrestin-dependent internalization of both the β_2 AR and A2b adenosine receptor is observed in human ASM cells, whereas ASM EP2 receptors do not readily bind arrestin, do not appear to be phosphorylated by GRKs, and do not undergo rapid agonist-stimulated internalization [20]. Although ASM EP2 receptors do exhibit desensitization with chronic PGE₂ treatment, they are much more efficacious in stimulating cAMP generation and promoting PKA-dependent functional effects in ASM cells than are either β_2 ARs or A2b adenosine receptors ([20] and Pascual and Penn, unpublished observations). These findings demonstrate the receptor-specific nature of mechanisms of homologous desensitization, and also show that susceptibility to desensitization at the receptor locus can be a major determinant in establishing the effect of GPCR ligands and their receptors on cellular functions.

GPCRs are also subject to phosphorylation and desensitization by PKA and PKC. Accordingly, any agent capable of activating cellular PKA or PKC (e.g., other GPCR agonists, phosphodiesterase inhibitors) can diminish GPCR responsiveness. PKA and PKC-mediated phosphorylation causes a degree of receptor uncoupling from G protein, but it does not promote arrestin binding to receptor and rapid internalization. Such *heterologous* desensitization of a given GPCR is typically not as profound as homologous desensitization. Cultured ASM cells exposed briefly to either PGE₂, adenosine, forskolin (all stimulators of cAMP production and PKA activation) or phorbol ester (a PKC activator) exhibit diminished isoproterenol-stimulated cAMP production [42,46,71,72]. Similarly, chronic exposure of ASM cells to interleukin-1 β (IL-1 β), tumor necrosis factor alpha (TNF- α), or transforming growth factor beta (TGF- β) also results in heterologous desensitization of the β_2 AR, presumably via the induction of Cyclo-oxygenase-2 (COX-2) activity and the autocrine effect of induced PGE₂ [76–80]. The PGE₂- or IL-1 β -mediated loss of beta-agonist-stimulated second messenger generation is associated with a loss in the relaxant effect of beta-agonist on carbachol-contracted ASM cells in culture [77]. The H1 histamine receptor exhibits both homologous [81] and heterologous [81] desensitization, the former presumably mediated exclusively by GRKs, the latter induced by phorbol ester in a PKC-dependent manner.

Down-regulation, defined as a loss in receptor density, occurs as a result of increased receptor degradation or reduced receptor synthesis. Recovery from GPCR down-regulation is a relatively slow process and requires new receptor synthesis. Virtually all GPCRs studied to date undergo some degree of down-regulation when chronically exposed to their agonist. Other agents can promote a loss of GPCR density through either inhibition of receptor gene transcription, or via ill-defined mechanisms that promote receptor degradation.

Arrestin-dependent internalization of GPCRs has been identified as a pathway leading to lysosomal degradation of GPCRs [82]. Recently studies also suggest that β_2 ARs and CXCR4 receptors are subject to ubiquitination that ultimately directs internalized receptor to lysosomes [83,84], or in the case of mu and delta opioid receptors, to proteosomal degradation [85]. Chronic exposure of ASM cells to beta-agonist, or ASM tissue to histamine results in down-regulation of the β_2 AR [86] and H1 histamine receptor [87], respectively. The effects of a receptor's agonist and other agents (e.g., glucocorticoids, cytokines, beta-agonists) on pre- and post-transcriptional regulation of new receptor synthesis have been characterized for numerous GPCRs in ASM or lung [81,87–97]. Although receptor degradation probably plays a prominent role in the down-

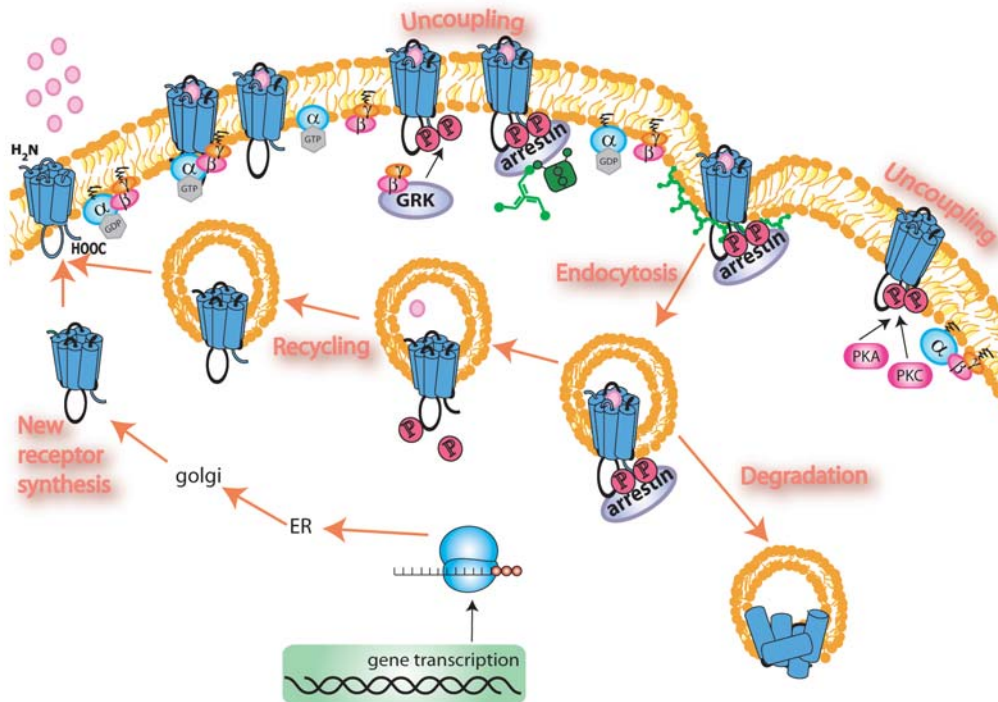


Figure 4

G protein-coupled receptor regulation in airway smooth muscle. Regulation of G protein-coupled receptor signaling at the receptor locus is effected by numerous mechanisms that establish the number and responsiveness of receptors at the cell surface. These mechanisms include new receptor synthesis, as well as modes of desensitization and resensitization that unfold after a receptor is activated by agonist. Receptor uncoupling occurs as a result of G protein-coupled receptor kinase (GRK)-mediated phosphorylation of agonist-occupied receptor, which promotes arrestin binding to phosphorylated receptor and steric inhibition of GPCR-G protein interaction. Arrestin binding to receptor also initiates internalization of receptor into clathrin-coated pits, after which receptors can traffick to lysosomes for degradation (downregulation) or be dephosphorylated and recycled back to the plasma membrane (resensitization). In addition, activation of intracellular kinases such as protein kinase A (PKA) or protein kinase C (PKC) can also phosphorylate GPCRs and promote a loss of GPCR-G protein coupling. See text for details.

regulation of GPCRs in ASM, the trafficking of GPCRs to their degradation fate has not been studied in ASM cells.

Up-regulation of GPCR expression is also observed for numerous GPCRs in numerous cell types and is an important physiologic means of conferring sensitization of GPCR signaling. Increased GPCR expression, mediated by increased gene transcription as well as post-transcriptional mechanisms, is frequently induced experimentally by chronic treatment of cells with antagonist. Antagonist-mediated up-regulation of GPCRs is relatively unexplored in ASM cells or tissue, although chronic treatment of rabbits with atropine has been shown to up-regulate both m2 and m3 mAChRs in the airway [98]. Transcription regulation of most GPCR genes in ASM cells is poorly understood, but should be greatly abetted by the increasing adroitness in applying molecular techniques to primary ASM cul-

tures and by the emergence of models of ASM phenotype regulation [27,93].

One final means by which GPCR responsiveness is influenced is by receptor genotype. Single nucleotide polymorphisms (SNPs) that result in changes in β_2 AR expression, cellular distribution, and signaling have been identified in both the promoter and coding region of the β_2 AR gene [99,100]. SNPs identified in the β_2 AR promoter have been shown to affect receptor expression [101,102]. Among those polymorphisms detected in the coding region, Arg→Gly16 exhibits enhanced agonist-induced desensitization (of beta-agonist-stimulated cAMP generation) and down-regulation, whereas Gln→Glu27 is decidedly desensitization- and down-regulation-resistant. Importantly, these properties are evident in β_2 ARs expressed endogenously in ASM cultures [86]. SNPs identified in

other GPCRs (including the α 2a- [103], α 2b- [104], and β 1-adrenergic receptors [105,106]) have also been shown to be of functional consequence, although their characterization has been performed primarily in either cell expression models or in the cardiovascular system.

The relevance of β ₂AR SNPs to asthma and asthma therapy are discussed below.

Regulation at the G protein locus

Regulation of G protein expression and activity has the potential to modify GPCR signaling. $G\alpha$ subunit GTPase activity is known to be regulated by recently discovered RGS (regulators of G protein signaling) proteins [107]. Experimental manipulation of RGS protein expression can alter GPCR signaling, but the physiologic role of RGS proteins is unclear. Interestingly, GRK2 has been recently shown to contain an RGS domain that can interact specifically with $G\alpha_q$ and quench its activity [108].

Overexpression of $G\alpha$ subunits in various cell systems can enhance GPCR signaling, and the expression of certain $G\alpha$ subtypes is altered in various disease state models (see below). In human ASM cells in culture, overexpression of $G\alpha_s$ increases both basal and Gs-coupled receptor-mediated cAMP production [46]. Whether altered $G\alpha$ expression or localization impacts GPCR signaling under physiologic conditions is somewhat controversial. Endogenous expression of G proteins is typically much higher than that of GPCRs or effectors, suggesting that most GPCR-G protein-effector signaling is probably limited more by the expression/activity of the effector or GPCR than by that of the G protein [109]. However, a growing appreciation that GPCR signaling may be highly compartmentalized [17] suggests that even small changes in $G\alpha$ subtype expression may regulate GPCR signaling. Consistent with this notion are observations that exposure of lung [110–112], ASM strips *ex vivo* [113,114], or ASM cultures [50] to various agents can elicit a loss of β ₂AR function that is associated with increased expression of specific $G\alpha_i$ isoforms or decreased expression of $G\alpha_s$.

Regulation at the effector locus

Although the study of endogenously-expressed GPCR effectors lags behind that of GPCRs and heterotrimeric G proteins, the recent cloning of numerous PLC and AC isoforms and their analysis in expression systems has facilitated insight into the tremendous complexity of effector regulation. Multiple mechanisms by which PLC activity is regulated have been demonstrated [115]. PLC β activity is greatly influenced by substrate availability; the agonist-sensitive pool of PIP₂ is metabolized several times per minute [116], meaning that recycling of products of hydrolysis, and the activity of numerous enzymes involved in this process, is critical to PLC activity. Localization of

PLC isoforms to the membrane appears to be regulated by interaction of pleckstrin homology domains in PLC with specific phosphoinositides and $G\beta\gamma$ subunits [117,118]. PLC β 2 and PLC β 3 isoforms can be phosphorylated by PKA, which results in reduced activity [119–121]. Other PLC isoforms can be phosphorylated by PKC, albeit with no apparent consequence [115,122]. Interestingly, activated PLC β isoforms serve as GTPase-activating proteins for $G\alpha_q$ and thus participate in negative feedback control of their activation [123].

Unfortunately our understanding of PLC regulation is derived largely from studies using cell-free models or cellular expression systems. With the exception of work from Martin and colleagues [124–126] and Pyne and Pyne [127], few studies to date have examined PLC signaling and its regulation in ASM cells.

Studies of AC regulation have been limited by the extremely low levels of endogenous AC isoform expression, and by the unstable nature of the AC protein, which has rendered its purification and characterization problematic. Detection of endogenous AC protein with currently available antibodies is often difficult in many cell types (including ASM), despite the suggestion of specific isoform expression in parallel analyses of AC mRNA levels. However, expression of recombinant AC isoforms has helped identify some regulatory features of AC [45,128,129]. AC I, II, III, V, and VII are subject to phosphorylation by PKC, which results in their sensitization [130–134]. Conversely, phosphorylation of AC V and VI by PKA inhibits AC activity [135–137]. $\beta\gamma$ subunits potentiate the stimulatory effect of $G\alpha_s$ subunits on AC II, IV, and VII [138–140]. Calcium/calmodulin is also a physiologic regulator of AC I, III, and VIII; isoforms whose expression tends to be restricted to the brain and olfactory epithelium [128].

Adenylyl cyclase (as well as other elements and regulators of Gs-coupled receptor signaling) and its activity appear to be concentrated in lipid rafts or caveolae, suggesting that compartmentalization serves to facilitate initiation or quenching of GPCR signaling [141,142]. Similarly, components of PLC signaling, but not PLC isoforms themselves, are also recovered in caveolin-containing membrane fractions [143].

In ASM, AC regulation is evident but appears species-specific. Stevens et al. [48] and Pyne and Pyne [127,144] demonstrated that bradykinin, platelet-derived growth factor (PDGF), and phorbol ester stimulate cAMP formation in guinea pig ASM, presumably via a PKC-dependent enhancement of AC II activation by $G\alpha_s$. Chronic treatment of canine ASM cultures with carbachol reduced basal and agonist-stimulated AC activity, an effect that was

reversed by PKC inhibition [51]. Similar results were obtained in studies of bovine ASM [50]. In contrast, chronic treatment of human ASM cultures with carbachol (as well as numerous other agonists of Gi-coupled receptors) promoted AC sensitization but in a PKC-insensitive, pertussis-toxin sensitive manner [46]. This manner of AC sensitization has been observed in other cell types including neuronal cells treated chronically with opioids, and appears to be an adaptive response (tolerance) to counteract persistent Gi signaling [64,145,146]. In an analysis of heterologously-expressed AC isoforms in COS cells, Nevo et al [147] determined that chronic Gi activation resulted in sensitization of AC I, V, VI, and VIII, and reduced activity of AC II, IV, and VII. Thus, the profile of AC transcripts and regulatory features of AC in human ASM suggest a predominance of AC VI or V in human ASM, whereas PKC-sensitive isoforms, perhaps AC II, may be preferentially expressed in non-human ASM.

Aberrant GPCR signaling and airway hyperreactivity

Changes in airway structure and ASM contractile state are the principal causes of increased airway resistance in asthma. Altered airway composition and architecture affect airway resistance through mechanisms that are both independent of and complimentary to changes in ASM contractile state. Excessive mucous production and edema are physical impediments to conductance, whereas edema and increased ASM mass alter airway geometry to amplify the effect of ASM contraction on airway lumen diameter [148–154].

ASM contractile state can be viewed as a function of: 1) the net sum of GPCR-mediated signals that result in establishing the level of the key contractile signaling molecule, calcium; and 2) the response of the cell's contractile machinery to calcium. Figure 5 offers a model that proposes 3 levels at which regulation of GPCR-mediated ASM contraction is altered in asthma.

Altered GPCR agonist presentation

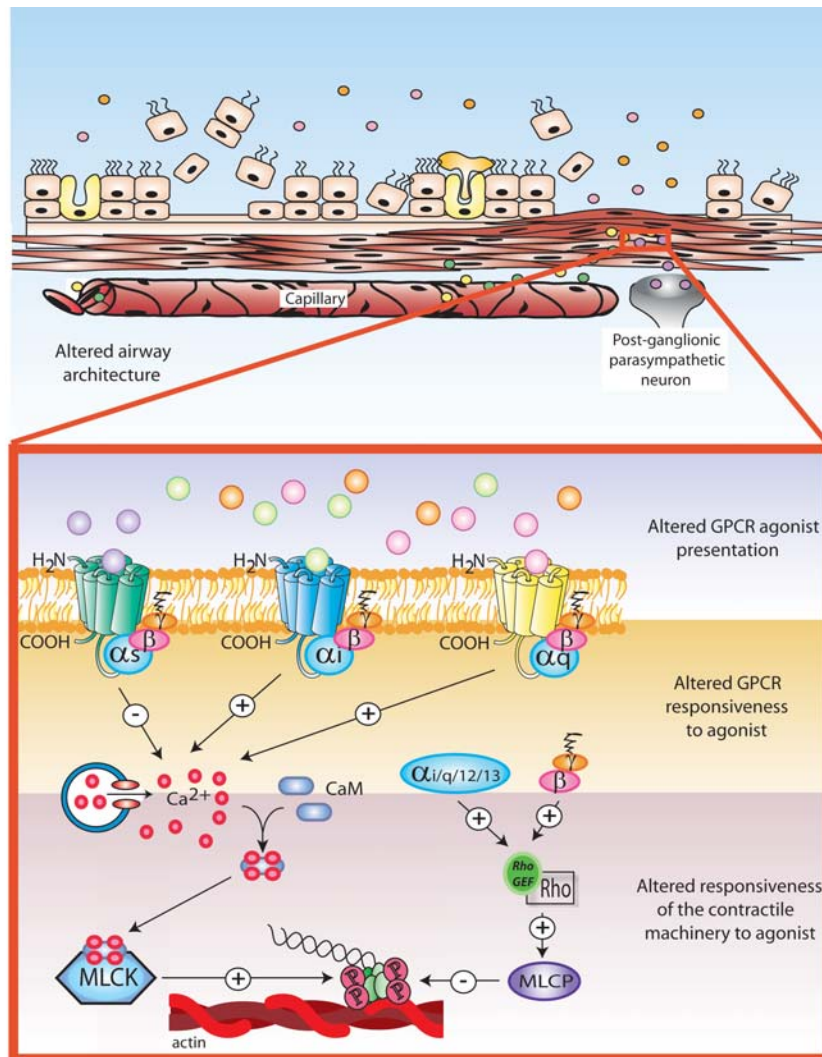
On one level we can consider the contribution of a disrupted balance of procontractile and prorelaxant stimuli accessible to ASM, whereby 1) an increase in procontractile stimuli in the asthmatic airway promotes greater activation of GPCRs (Gq- and Gi-coupled receptors) mediating contraction, or 2) a reduction in agonist levels serving Gs-coupled receptor activation diminishes prorelaxant signaling. It is well established that numerous GPCR agonists (e.g., acetylcholine, histamine, and thromboxane) capable of evoking ASM contraction are elevated in the airways of many asthmatics [155–159]. The source of these agonists may be neural cells (increased parasympathetic discharge caused by numerous factors) inflammatory cells (e.g., from mast cells, platelets), or possibly

resident mesenchymal airway cells (including ASM itself). Exacerbating this condition in asthma is the sloughing of airway epithelium, which constitutes a loss of diffusion barrier and may increase ASM access preferentially to procontractile agonists [152,160,161]. These findings strongly suggest that exaggerated procontractile GPCR agonist presentation to ASM occurs with asthma and contributes to increased ASM tone. Less certain is whether the levels of prorelaxant GPCR agonists are suppressed in asthmatics. Such agents (e.g., catecholamines, certain eicosanoids) tend to have short half-lives and their local concentrations are not easily measured. However, it should be recognized that the loss of airway epithelium in asthma also constitutes a loss of relaxant factors that target either GPCRs (e.g. PGE₂) or other pathways (nitric oxide) in ASM [152,162–164].

Altered GPCR responsiveness to agonist

On another level we can consider the contribution of altered GPCR responsiveness to a given level of agonist presented to ASM, such that the sum of GPCR-generated signals results in higher than normal increases in intracellular calcium. Such altered GPCR responsiveness may result from either sensitization of Gq- or Gi-mediated signaling that promotes increased calcium flux, or from desensitization of Gs-coupled receptor signaling that antagonizes signaling leading to elevated calcium. Numerous studies suggest that both of these phenomena occur and contribute to ASM hyperresponsiveness.

Recent findings demonstrate that GPCR-mediated contraction of ASM strips *ex vivo* is augmented by various "sensitization" strategies [165]. These strategies include sensitization to allergen *in vivo* [68,112,166,167] or prior exposure of ASM strips *ex vivo* to cytokines, serum from atopic asthmatics, or immune complexes [113,168–172]. Studies of ASM cells suggest that the observed ASM hyperreactivity results in part from an increased calcium flux mediated by sensitized Gq- or Gi-coupled receptor transmembrane signaling. Treatment of ASM cells with IL-1 β or TNF- α causes a significantly greater increase in phosphoinositide generation and calcium flux elicited by carbachol, bradykinin, or thrombin [173–177]. Mechanistic studies suggest that up-regulated receptor or G protein expression may mediate this enhanced response. IL-1 β and TNF- α are both able to increase B2 bradykinin receptor expression in ASM [174,175]. Treatment of ASM *ex vivo* with cytokines, rhinovirus, or asthmatic serum [114,171,178], *in vivo* with antigen or IL-1 β [112,179], or ASM cells in culture with TNF- α [180], has been shown to increase expression of either Gq or specific G α i isoforms in either lung or ASM. These latter findings are consistent with the observation in ASM cells that calcium mobilization stimulated by NaF (a nonspecific G α activator) is increased following chronic treatment with TNF- α , and

**Figure 5**

Model of aberrant G protein-coupled receptor signaling in airway smooth muscle contributing to elevated airway smooth muscle tone. Within the context of airway remodeling, G protein-coupled receptor (GPCR) signaling leading to airway smooth muscle (ASM) contraction may be altered at 3 different levels in the asthmatic airway. *First*, ASM may be exposed to greater levels of GPCR agonists that promote contraction (i.e., those activating Gq- or Gi-coupled receptors), or to lower levels of GPCR agonists that mediate prorelaxant signaling (Gs-coupled receptors). Increased levels of procontractile agonists can augment contraction, whereas combined stimulation of ASM with multiple Gq/Gi-coupled receptor agonists has a synergistic effect on contraction [277]. The sources of both procontractile and prorelaxant agonists include infiltrating inflammatory cells (e.g., mast cells releasing histamine, platelets releasing thrombin), postganglionic neurons with exaggerated cholinergic discharge resulting from stimulated reflex arcs or dysregulated m2 muscarinic acetylcholine receptor (mAChR)-mediated feedback inhibition [281], and resident airway cells such as epithelium, fibroblasts, and ASM itself. Access of these agonists to ASM may be increased by sloughing of airway epithelium. *Second*, Gq- or Gi-coupled receptor signaling may be sensitized, or Gs-coupled receptor signaling desensitized, resulting in an imbalance of signaling promoting increased phosphoinositide generation and increased calcium mobilization. *Third*, the contractile response to calcium may be exaggerated due to "augmented sensitization" manifested in increased myosin light chain phosphorylation caused by: 1) an imbalance of GPCR-derived signals; and 2) increased expression and activity of myosin light chain kinase (MLCK) associated with inhibited myosin light chain phosphatase (MLCP) activity, the latter a result of increased RhoA activity mediated by upregulated $G_{12/13}$ and RhoA expression. Not included in this model (for the sake of simplicity) are other potential regulatory features of ASM contraction including ASM strain and load, direct contribution of non-GPCR signaling pathways to phospholipase C (PLC) activation and calcium mobilization, calcium loading in intracellular stores, compartmentalization of calcium and calcium signaling, and ion channel and membrane pump activity that directly and indirectly affect intracellular calcium levels.

suggest a mechanism by which calcium flux stimulated by numerous GPCRs may be augmented [181]. However, it should be noted that the effects of cytokines on GPCR-mediated PLC activity can be receptor-specific; in the same model that demonstrates TNF- α -mediated augmentation of bradykinin-stimulated phosphoinositide production, the phosphoinositide response to histamine was depressed, presumably via a COX-dependent, PKA-mediated phosphorylation and desensitization of the H1 histamine receptor [175].

The contribution of desensitized prorelaxant Gs-coupled receptor signaling to airway hyperresponsiveness in asthma is unclear. To date, the β_2 AR is the only Gs-coupled receptor whose role in asthma has received significant attention, and the preponderance of evidence suggests that β_2 ARs on ASM are most responsible for the effect of beta-agonists on airway tone [182]. Whether β_2 AR dysfunction, and specifically β_2 AR dysfunction in ASM, plays a prominent role in asthma has been a hotly debated topic for over thirty years. Asthma triggers such as viral infections can diminish β_2 AR function [183], and numerous animal models of airway inflammation, ex vivo analyses of ASM strips treated with cytokines or asthmatic serum [112,114], and limited data from ASM tissue from severe asthmatics [184,185] have all provided evidence that β_2 AR-mediated relaxant effect and signaling are depressed in asthma. Several possible mechanisms by which the proposed diminished β_2 AR function and signaling occurs can be proposed. The diminished capacity of beta-agonists to inhibit methacholine-induced contraction of ASM strips ex vivo may reflect an increased capacity of m2 mAChRs to inhibit beta-agonist-stimulated AC activity (note that asthmatic serum and cytokines upregulate G α_i expression). As noted above, several studies also demonstrate that numerous agents (e.g. cytokines, TGF- β , PGE $_2$, whose levels are elevated in the asthmatic airway) induce desensitization of the β_2 AR in cultured ASM cells, typically by mechanisms suggestive of PKA-mediated β_2 AR phosphorylation. Moreover, intratracheal installation of IL-1 β in rats results in not only a loss of beta-agonist-mediated relaxation of methacholine-induced bronchoconstriction, but an increase in GRK activity, and GRK2 and GRK5 expression in the lung [112]. This is an intriguing finding and suggests that inflammation may modulate homologous GPCR desensitization in the airway. This may preferentially affect β_2 AR signaling in ASM, in light of findings by McGraw et al. suggesting that low (endogenous) expression levels of GRKs in ASM cells account for relatively robust β_2 AR signaling in ASM [186], and that such signaling may be sensitive to changes in GRK [72] or arrestin [20] expression.

In contrast to the evidence cited above, numerous studies have noted no appreciable loss of β_2 AR function in asth-

matics based on analyses of lung function, or tissues ex vivo (reviewed in [2,4,187]). Moreover, β_2 AR blockade in normal subjects does not cause bronchoconstriction [188,189], and the Arg \rightarrow Gly16 (desensitization-prone) β_2 AR polymorphism is not over-represented in asthmatics [190]. These findings suggest that asthma is not defined by diminished β_2 AR responsiveness. However, constitutive β_2 AR signaling does appear to be important in the asthmatic subject, as administration of β_2 AR antagonists is not well tolerated in many asthmatic subjects [189]. Predictably, diminished β_2 AR function could influence disease severity. Results from both clinical trials and epidemiological studies suggest that β_2 AR SNPs at codon 16 influence β_2 AR responsiveness to both endogenous and exogenous beta-agonists and thereby influence disease severity and response to therapy [99,191,192]. Asthmatics homozygous for Gly16 may have fewer responsive β_2 ARs as a result of greater down-regulation caused by endogenous catecholamines. Consequently, the effects of endogenous catecholamines and the initial response to exogenous beta-agonist may be diminished in these patients, as suggested by data from Martinez et al., demonstrating a significantly greater bronchodilator response in (beta-agonist naïve) Arg16 homozygotes [192]. Alternatively, continuous use of inhaled beta-agonists results in a progressive drop in morning peak flow only in patients homozygous for the Arg16 SNP [193], suggesting that the absolute loss of β_2 AR responsiveness is greater in Arg16 homozygotes because of their greater capacity to down-regulate from the (naïve) untreated state.

Thus the collective evidence suggests that β_2 AR dysfunction of any nature does not cause asthma, but the active disease state likely promotes a loss of β_2 AR function that has a small impact on disease severity, at least in some subset of asthmatics. As a corollary, β_2 AR polymorphisms that diminish β_2 AR signaling are disease modifiers, but not disease predictors, and influence the response to therapy. In contrast, a more significant role in asthma is suggested for sensitized Gq or Gi-coupled receptor signal transduction that promotes a greater phosphoinositide generation and calcium mobilization in response to a given concentration of agonist.

Altered responsiveness of the contractile machinery to calcium

On a final level we can propose a role for altered responsiveness of ASM contractile machinery to calcium as a mechanism of airway hyperresponsiveness. Although Rho-mediated sensitization to calcium occurs within the context of ASM contraction under normal conditions, there is evidence that calcium sensitization mechanisms may be primed ("augmented sensitization") by inflammation. Chiba et al. noted that acetylcholine-induced isometric tension was greater in bronchial rings from

antigen-challenged rats compared to that from control rats, although no significant difference between the two groups in calcium mobilization is observed [194]. Similarly, when calcium concentrations were clamped to 1 μM in permeabilized bronchial rings, tension development was greater in rings from allergen sensitized/challenged rats compared to that from controls [70]. Changes in the expression of numerous proteins may underlie this augmentation of calcium sensitization in ASM. In tracheal and bronchial smooth muscle from ragweed-sensitized dogs, a constitutive increase in phosphorylation of myosin light chain 20 (MLC20) associated with increased content and activity of MLCK [195,196], and human bronchial rings sensitized with allergen *ex vivo* exhibit an ~ 3 fold increase in MLCK expression [197]. RhoA protein levels are increased, and acetylcholine-induced translocation of RhoA to the plasma membrane is significantly higher in bronchial smooth muscle from airway hyperresponsive versus control rats [70,198]. Finally, $G\alpha_{12}$ and $G\alpha_{13}$ (upstream regulators of Rho activity) levels in bronchial smooth muscle are also upregulated in hyperresponsive rats [68]. These data suggest that allergen-driven inflammation up-regulates multiple proteins in the pathway promoting Rho-dependent calcium sensitization, and that augmented calcium sensitization may be sufficient to confer airway hyperreactivity in asthma.

Altered GPCR responsiveness with therapy

To further complicate the relationship between GPCR responsiveness and asthma, evidence suggests that both glucocorticoids and beta-agonists, the two most widely used drugs in the treatment of asthma, also regulate GPCR responsiveness, primarily via changes in receptor expression and coupling. Glucocorticoids have been shown to up-regulate $\beta_2\text{AR}$ and $G\alpha_s$ expression [89,91,199], counteract the $\beta_2\text{AR}$ down-regulation induced by beta-agonist [92], and reverse increases in GRK activity and $\beta_2\text{AR}$ desensitization induced in a rat model of airway inflammation [58]. Conversely, glucocorticoids inhibit expression of NK2 receptors in bovine ASM [94], inhibit m2 mAChR expression in the airway [200], and inhibit the IL-1 β -mediated up-regulation of B2 bradykinin (BK) receptors in the airway [201]. Pretreatment of human ASM cells with glucocorticoids significantly inhibits histamine-stimulated phosphoinositide production [202]. Thus the sum of effects of glucocorticoids on GPCR signal transduction components tends to render ASM less responsive to procontractile stimuli and more responsiveness to beta-agonists.

Beta-agonist therapy, on the other hand, tends to promote the sensitization of procontractile GPCR signaling and desensitization of prorelaxant GPCR signaling, with uncertain clinical relevance. Although conflicting data exist as to whether beta-agonist therapy exacerbates bronchial hy-

perresponsiveness in asthmatics, Mak and colleagues have recently demonstrated that exposure of ASM *ex vivo* to beta-agonist up-regulates both NK2 [95] and H1 histamine [90] receptors, suggesting a mechanism whereby enhanced procontractile GPCR signaling promotes bronchial hyperresponsiveness.

Numerous studies have also demonstrated that repeated use of inhaled beta-agonists results in a loss of the prophylactic bronchoprotection conferred by beta-agonists [203–206]. In many respects this could be considered a normal and predictable response, consistent with a physiologic/teleologic role of $\beta_2\text{AR}$ desensitization and the demonstration of homologous desensitization of ASM $\beta_2\text{AR}$ s in multiple *in vivo*, *ex vivo*, and *in vitro* models. However, Finney et al. recently observed that lung GRK2 levels were elevated in rats chronically treated with beta-agonists [110]. Thus, in a manner similar to that invoked by IL-1 β (see above), chronic beta-agonist therapy may up-regulate the GPCR desensitization "machinery" to further limit the effect of therapy and possibly exacerbate disease.

Although the clinical relevance of the observed loss of bronchoprotection has been questioned [207], the collective evidence suggests that homologous $\beta_2\text{AR}$ desensitization does occur as a consequence of beta-agonist therapy. Accordingly, therapies that minimize or counteract $\beta_2\text{AR}$ desensitization, such as glucocorticoids and salmeterol, may benefit from this property. Glucocorticoids preserve or enhance $\beta_2\text{AR}$ function in the airway through both their anti-inflammatory actions as well as their direct effects on ASM $\beta_2\text{AR}$ expression and regulation noted above. These effects may explain in part the positive cooperativity exhibited by combined beta-agonist and glucocorticoids therapy. As a low intrinsic activity beta agonist, salmeterol has limited capacity to promote homologous $\beta_2\text{AR}$ desensitization in *in vitro* models [208,209]; this property in addition to its lipophilic nature appears largely responsible for its long-lasting effect. Moreover, daily salmeterol treatment has little effect on the rescue or prophylactic ability of albuterol [203,210].

GPCRs in ASM: What lies ahead

Within the last decade the field of GPCR signaling has experienced an epiphany with the realization that GPCRs do more than subservise restricted functions in fully differentiated cells; they also play important roles in mediating diverse cell functions such as embryogenesis, tissue regeneration, and cell proliferation [211,212]. Interestingly, this realization coincided with a similarly profound discovery in the field of asthma research – that ASM not only contracts, but also performs numerous "synthetic" functions that modulate both airway structure and airway inflammation. Not surprisingly, ASM GPCRs are important regulators of many ASM synthetic functions.

The newfound respective focuses of GPCR signaling and ASM research suggest an exciting direction for the study of GPCRs in ASM over the next decade. The current challenge (or curse) confronting the student of ASM signal transduction extends beyond defining the myriad intracellular signaling pathways, their regulation, and their degree of "cross-talk" with each other, to understanding how these events occur within an equally complex, dynamic airway environment.

Such an understanding should not only greatly improve our knowledge of asthma pathogenesis, but also redefine asthma therapy. With the possible exception of steroids, asthma drugs have been developed and prescribed to prevent or reverse acute bronchospasm with little consideration of their effects on ASM synthetic functions and the chronic nature of asthma. As the roles of airway remodeling and ASM synthetic functions in asthma pathogenesis become more clearly established, agents that target the activation or signaling of various GPCRs that mediate these phenomena will undoubtedly receive greater consideration as prophylactic and therapeutic asthma drugs.

Abbreviations

AA = arachadonic acid

AC = adenylyl cyclase

ASM = airway smooth muscle

BK = bradykinin

β_2 AR = beta-2-adrenergic receptor

CLT1R = cysteinyl leukotriene type I receptor

COX2 = cyclo-oxygenase-2

DAG = 1,2-diacylglycerol

EDG = endothelium differentiation gene

EGF = epidermal growth factor

GAP = GTPase protein

GEF = Guanine nucleotide exchange factor

GPCR = G protein-coupled receptor

GRK = G protein-coupled receptor kinase

IL-1 β = interleukin-1 β

IP₃ = inositol 1,4,5-trisphosphate

LPA = lysophosphatidic acid

LPS = lipopolysaccharide

LTD4 = leukotriene D4

mAChR = muscarinic acetylcholine receptor

MLC = myosin light chain

MLCK = myosin light chain kinase

MLCP = myosin light chain phosphatase

NK = neurokinin

PAR = protease-activated receptor

PDGF = platelet derived growth factor

PGE₂ = prostaglandin E₂

PI = phosphoinositide

PIP2 = phosphoinositol 4,5-bisphosphate

PKA = protein kinase A

PKC = protein kinase C

PLA2 = phospholipase A2

PLC = phospholipase C

RGS = regulators of G protein signaling

SNP = single nucleotide polymorphism

SSP = sphingosine-1-phosphate

TGF- β = transforming growth factor beta

TNF- α = tumor necrosis factor alpha

TP = thromboxane A2 / prostaglandin

VIP = vasoactive intestinal peptide

Acknowledgments

The authors wish to thank numerous investigators including Jim Martin and Judith Mak for providing thoughtful discussion, and Stuart Hirst, Dennis McGraw, Andrew Halayko, Steve Liggett, Steve Peters, and Ian Hall for their critical review of the manuscript and contributions leading to its final form. The authors would also like to acknowledge the contributions of Emma Weaver, who was largely responsible for figure generation, and for whom we have reserved a place in our lab as soon as she graduates from high

school, college, and medical school. At that time we hope she will be supported by NIH grants HL58506, HL65338, and HL67663. R.B.P. is recipient of an American Lung Association Career Investigator Award.

References

- Penn RB, Pronin AP and Benovic JL **Regulation of G protein-coupled receptor kinases** *Trends Cardiovasc Med* 2000, **10**:81-89
- Barnes PJ **Pharmacology of airway smooth muscle** *Am J Respir Crit Care Med* 1998, **158**(Suppl):S123-S132
- Hall IP **Second messengers, ion channels and pharmacology of airway smooth muscle** *Eur Respir J* 2000, **15**:1120-1127
- Douglas JS **Receptors on target cells. Receptors on airway smooth muscle** *Am Rev Respir Dis* 1990, **141**(Suppl):S123-S126
- Tschumperlin DJ and Drazen JM **Mechanical stimuli to airway remodeling** *Am J Respir Crit Care Med* 2001, **164**(Suppl):S90-S94
- Bjorck T, Gustafsson LE and Dahlen SE **Isolated bronchi from asthmatics are hyperresponsive to adenosine, which apparently acts indirectly by liberation of leukotrienes and histamine** *Am Rev Respir Dis* 1992, **145**:1087-1091
- Forsythe P and Ennis M **Adenosine, mast cells and asthma** *Inflamm Res* 1999, **48**:301-307
- Salvatore CA, Tilley SL, Latour AM, Fletcher DS, Koller BH and Jacobson MA **Disruption of the A₃ adenosine receptor gene in mice and its effect on stimulated inflammatory cells** *J Biol Chem* 2000, **275**:4429-4434
- Tilley SL, Wagoner VA, Salvatore CA, Jacobson MA and Koller BH **Adenosine and inosine increase cutaneous vasopermeability by activating A₃ receptors on mast cells** *J Clin Invest* 2000, **105**:361-367
- Feoktistov I, Garland EM, Goldstein AE, Zeng D, Belardinelli L, Wells JN and Biaggioni I **Inhibition of human mast cell activation with the novel selective adenosine A_{2B} receptor antagonist 3-isobutyl-8-pyrrolidinoxanthine (IPDX)₂** *Biochem Pharmacol* 2001, **62**:1163-1173
- Zhong H, Chunn JL, Volmer JB, Fozard JR and Blackburn MR **Adenosine-mediated mast cell degranulation in adenosine deaminase-deficient mice** *J Pharmacol Exp Ther* 2001, **298**:433-440
- Hall IP and Kotlikoff M **Use of cultured airway myocytes for study of airway smooth muscle** *Am J Physiol* 1995, **268**:L1-L11
- Panettieri RA, Murray RK, DePalo LR, Yadavish PA and Kotlikoff MI **A human smooth muscle cell line that retains physiological responsiveness** *Am J Physiol* 1989, **256**(Cell Physiol 25):C329-C335
- Murray RK, Fleischmann BK and Kotlikoff MI **Receptor-activated Ca²⁺ influx in human airway smooth muscle: use of Ca²⁺ imaging and perforated patch-clamp techniques** *Am J Physiol* 1993, **264**(Cell Physiol 33):C485-C490
- McGraw DW, Forbes SL, Kramer LA, Witte DP, Fortner CN, Paul RJ and Liggett SB **Transgenic overexpression of beta₂-adrenergic receptors in airway smooth muscle alters myocyte function and ablates bronchial hyperreactivity** *J Biol Chem* 1999, **274**:32241-32247
- Neubig RR **Membrane organization in G-protein mechanisms** *FASEB J* 1994, **8**:939-946
- Ostrom RS, Post SR and Insel PA **Stoichiometry and compartmentation in G protein-coupled receptor signaling: implications for therapeutic interventions involving G(s)** *J Pharmacol Exp Ther* 2000, **294**:407-412
- Ediger TL, Danforth BL and Toews ML **Lysophosphatidic acid up-regulates the epidermal growth factor receptor in human airway smooth muscle cells** *Am J Physiol Lung Cell Mol Physiol* 2002, **282**:L91-L98
- Krymskaya VP, Orsini MJ, Eszterhas A, Benovic JL, Panettieri RA and Penn RB **Potentialiation of human airway smooth muscle proliferation by Receptor Tyrosine Kinase and G protein-coupled receptor activation** *Am J Respir Cell Mol Biol* 2000, **23**:546-554
- Penn RB, Pascual RM, Kim Y-M, Mundell SJ, Krymskaya VP, Panettieri RA Jr and Benovic JL **Arrestin specificity for G protein-coupled receptors in human airway smooth muscle** *J Biol Chem* 2001, **276**:32648-32656
- Widdop S, Daykin K and Hall IP **Expression of muscarinic M₂ receptors in cultured human airway smooth muscle cells** *Am J Respir Cell Mol Biol* 1993, **9**:541-546
- Halayko AJ, Salari H, Ma X and Stephens NL **Markers of airway smooth muscle cell phenotype** *Am J Physiol* 1996, **270**:L1040-L1051
- Hubmayr RD, Shore SA, Fredberg JJ, Planus E, Panettieri RA Jr, Moller W, Heyder J and Wang N **Pharmacological activation changes stiffness of cultured human airway smooth muscle cells** *Am J Physiol* 1996, **271**:C1660-C1668
- Stephens NL, Li W, Wang Y and Ma X **The contractile apparatus of airway smooth muscle. Biophysics and biochemistry** *Am J Respir Crit Care Med* 1998, **158**:S80-S94
- Mitchell RW, Halayko AJ, Kahraman S, Solway J and Wylam ME **Selective restoration of calcium coupling to muscarinic M₃ receptors in contractile cultured airway myocytes** *Am J Physiol Lung Cell Mol Physiol* 2000, **278**:L1091-L1100
- Camoretti-Mercado B, Liu HW, Halayko AJ, Forsythe SM, Kyle JW, Li B, Fu Y, McConville J, Kogut P, Vieira JE, Patel NM, Hershenson MB, Fuchs E, Sinha S, Miano JM, Parmacek MS, Burkhardt JK and Solway J **Physiological control of smooth muscle-specific gene expression through regulated nuclear translocation of serum response factor** *J Biol Chem* 2000, **275**:30387-30393
- Halayko AJ and Solway J **Molecular mechanisms of phenotypic plasticity in smooth muscle cells** *J Appl Physiol* 2001, **90**:358-368
- Johnson EN and Druey KM **Heterotrimeric G protein signaling: role in asthma and allergic inflammation** *J Allergy Clin Immunol* 2002, **109**:592-602
- Rhee SG **Regulation of phosphoinositide-specific phospholipase C** *Annu Rev Biochem* 2001, **70**:281-312
- Pohl J, Winder SJ, Allen BG, Walsh MP, Sellers JR and Gerthoffer WT **Phosphorylation of calponin in airway smooth muscle** *Am J Physiol* 1997, **272**:L115-L123
- Hakonarson H and Grunstein MM **Regulation of second messengers associated with airway smooth muscle contraction and relaxation** *Am J Respir Crit Care Med* 1998, **158**:S115-S122
- Giembycz MA and Raeburn D **Current concepts on mechanisms of force generation and maintenance in airways smooth muscle** *Pulm Pharmacol* 1992, **5**:279-297
- Somlyo AP and Somlyo AV **Signal transduction and regulation in smooth muscle** *Nature* 1994, **372**:231-236
- Hauck RW, Schulz C, Schomig A, Hoffman RK and Panettieri RA Jr **alpha-Thrombin stimulates contraction of human bronchial rings by activation of protease-activated receptors** *Am J Physiol* 1999, **277**:L22-L29
- Toews ML, Ediger TL, Romberger DJ and Rennard SI **Lysophosphatidic acid in airway function and disease** *Biochim Biophys Acta* 2002, **1582**:240-250
- Page K and Hershenson MB **Mitogen-activated signaling and cell cycle regulation in airway smooth muscle** *Front Biosci* 2000, **5**:D258-D267
- Krymskaya VP, Penn RB, Orsini MJ, Scott PH, Plevin RJ, Walker TR, Eszterhas AJ, Amrani Y, Chilvers ER and Panettieri RA Jr **Phosphatidylinositol 3-kinase mediates mitogen-induced human airway smooth muscle cell proliferation** *Am J Physiol* 1999, **277**:L65-L78
- Ammit AJ, Hastie AT, Edsall LC, Hoffman RK, Amrani Y, Krymskaya VP, Kane SA, Peters SP, Penn RB, Spiegel S and Panettieri RA Jr **Sphingosine 1-phosphate modulates human airway smooth muscle cell functions that promote inflammation and airway remodeling in asthma** *FASEB J* 2001, **15**:1212-1214
- Pang L and Knox AJ **PGE₂ release by bradykinin in human airway smooth muscle cells: involvement of cyclooxygenase-2 induction** *Am J Physiol* 1997, **273**:L1132-L1140
- Hirshman CA and Emala CW **Actin reorganization in airway smooth muscle cells involves Gq and Gi-2 activation of Rho** *Am J Physiol* 1999, **277**:L653-L661
- Belvisi MG, Saunders M, Yacoub M and Mitchell JA **Expression of cyclo-oxygenase-2 in human airway smooth muscle is associated with profound reductions in cell growth** *Br J Pharmacol* 1998, **125**:1102-1108
- Mundell SJ, Olah ME, Panettieri RA, Benovic JL and Penn RB **Regulation of G protein-coupled receptor-adenylyl cyclase responsiveness in human airway smooth muscle by exogenous and endogenous adenosine** *Am J Respir Cell Mol Biol* 2000, **24**:155-163
- Maruno K, Absoud A and Said SI **VIP inhibits basal and histamine-stimulated proliferation of human smooth muscle cells** *American Journal of Physiology* 1995, **268**:L1047-L1051

44. Penn RB and Benovic JL **Regulation of G protein-coupled receptors.** In *Handbook of Physiology* (Edited by: Conn PM) New York: Oxford University Press 1998, 125-164
45. Premont RT **Identification of adenylyl cyclases by amplification using degenerate primers** *Methods Enzymol* 1994, **238**:116-127
46. Billington CK, Hall IP, Mundell SM, Parent J-L, Panettieri RA, Benovic JL and Penn RB **Inflammatory and contractile agents sensitize specific adenylyl cyclase isoforms in human airway smooth muscle** *Am J Resp Cell Mol Biol* 1999, **21**:597-606
47. Xu D, Isaacs C, Hall IP and Emala CW **Human airway smooth muscle expresses 7 isoforms of adenylyl cyclase: a dominant role for isoform V** *Am J Physiol Lung Cell Mol Physiol* 2001, **281**:L832-L843
48. Stevens PA, Pyne S, Grady M and Pyne NJ **Bradykinin-dependent activation of adenylate cyclase activity and cyclic AMP accumulation in tracheal smooth muscle occurs via protein kinase C-dependent and -independent pathways** *Biochem J* 1994, **297**:233-239
49. Pyne NJ, Moughal N, Stevens PA, Tolan D and Pyne S **Protein kinase C-dependent cyclic AMP formation in airway smooth muscle: the role of type II adenylate cyclase and the blockade of extracellular-signal-regulated kinase-2 (ERK-2) activation** *Biochemical J* 1994, **304**:611-616
50. Emala CW, Clancy-Keen J and Hirshman CA **Decreased adenylyl cyclase protein and function in airway smooth muscle by chronic carbachol pretreatment** *Am J Physiol Cell Physiol* 2000, **279**:C1008-C1015
51. Schears G, Clancy J, Hirshman CA and Emala CW **Chronic carbachol pretreatment decreases adenylyl cyclase activity in airway smooth muscle** *Am J Physiol* 1997, **273**:L640-7
52. Taussig R and Zimmermann G **Type-specific regulation of mammalian adenylyl cyclases by G protein pathways** *Adv Second Messenger Phosphoprotein Res* 1998, **32**:81-98
53. Hallsworth MP, Twort CH, Lee TH and Hirst SJ **beta[2]-adrenoceptor agonists inhibit release of eosinophil-activating cytokines from human airway smooth muscle cells** *Br J Pharmacol* 2001, **132**:729-741
54. Ammit AJ, Hoffman RK, Amrani Y, Lazaar AL, Hay DWP, Torphy TJ, Penn RB and Panettieri RA **TNF α -induced secretion of RANTES and IL-6 from human airway smooth muscle cells: Modulation by cAMP.** *Am J Respir Cell Mol Biol* 2000, **23**:794-802
55. Hirshman CA, Zhu D, Panettieri RA and Emala CW **Actin depolymerization via the beta-adrenoceptor in airway smooth muscle cells: a novel PKA-independent pathway** *Am J Physiol Cell Physiol* 2001, **281**:C1468-C1476
56. Kume H, Hall IP, Washabau RJ, Tagaki K and Kotlikoff MI **b-adrenergic agonists regulate KCa channels in airway smooth muscle by cAMP-dependent and -independent mechanisms** *J Clin Invest* 1994, **93**:371-379
57. Spicuzza L, Belvisi MG, Birrell MA, Barnes PJ, Hele DJ and Giembycz MA **Evidence that the anti-spasmodic effect of the beta-adrenoceptor agonist, isoprenaline, on guinea-pig trachealis is not mediated by cyclic AMP-dependent protein kinase** *Br J Pharmacol* 2001, **133**:1201-1212
58. Mak JCW, Hlsada T, Salmon PJ, Barnes PJ and Chung KF **Reversal of IL-1beta-induced up-regulation of G-protein-coupled receptor kinase activity by dexamethasone** *Am J Respir Care Crit Med* 2001, **163**:A228
59. Joshi S, Abebe W and Agrawal DK **Identification of guanine nucleotide binding regulatory proteins in bovine tracheal smooth muscle** *Mol Cell Biochem* 1996, **154**:179-184
60. Zaagsma J, Roffel AF and Meurs H **Muscarinic control of airway function** *Life Sci* 1997, **60**:1061-1068
61. Chiba Y, Sakai H and Misawa M **Possible involvement of G(i3) protein in augmented contraction of bronchial smooth muscle from antigen-induced airway hyperresponsive rats** *Biochem Pharmacol* 2001, **61**:921-924
62. Thomas JM and Hoffman BB **Isoform-specific sensitization of adenylyl cyclase activity by prior activation of inhibitory receptors: role of beta gamma subunits in transducing enhanced activity of the type VI isoform** *Mol Pharmacol* 1996, **49**:907-914
63. Prather PL, Tsai AW and Law PY **Mu and delta opioid receptor desensitization in undifferentiated human neuroblastoma SHSY5Y cells** *Mol Pharmacol* 1994, **270**:177-184
64. Nestler EJ, Hope BT and Widnell KL **Drug addiction: a model for the molecular basis of neural plasticity** *Neuron* 1993, **11**:995-1006
65. Zadina JE, Harrison LM, Ge LJ, Kastin AJ and Chang SL **Differential regulation of mu and delta opiate receptors by morphine, selective agonists and antagonists and differentiating agents in SH-SY5Y human neuroblastoma cells** *J Pharmacol Exp Ther* 1994, **270**:1086-1096
66. Luttrell LM, Della Rocca GJ, van Biesen T, Luttrell DK and Lefkowitz RJ **Gbetagamma subunits mediate Src-dependent phosphorylation of the epidermal growth factor receptor. A scaffold for G protein-coupled receptor-mediated Ras activation** *J Biol Chem* 1997, **272**:4637-4644
67. Sah VP, Seasholtz TM, Sagi SA and Brown JH **The role of Rho in G protein-coupled receptor signal transduction** *Annu Rev Pharmacol Toxicol* 2000, **40**:459-489
68. Chiba Y and Misawa M **Increased expression of G12 and G13 proteins in bronchial smooth muscle of airway hyperresponsive rats** *Inflamm Res* 2001, **50**:333-336
69. Iizuka K, Yoshii A, Samizo K, Tsukagoshi H, Ishizuka T, Dobashi K, Nakazawa T and Mori M **A major role for the rho-associated coiled coil forming protein kinase in G-protein-mediated Ca2+ sensitization through inhibition of myosin phosphatase in rabbit trachea** *Br J Pharmacol* 1999, **128**:925-933
70. Chiba Y, Takada Y, Miyamoto S, MitsuiSaito M, Karaki H and Misawa M **Augmented acetylcholine-induced, Rho-mediated Ca2+ sensitization of bronchial smooth muscle contraction in antigen-induced airway hyperresponsive rats** *Br J Pharmacol* 1999, **127**:597-600
71. Hall IP, Daykin K and Widdop S **Beta 2-adrenoceptor desensitization in cultured human airway smooth muscle** *Clin Sci (Colch)* 1993, **84**:151-157
72. Penn RB, Panettieri RA Jr and Benovic JL **Mechanisms of acute desensitization of the b2AR-adenylyl cyclase pathway in human airway smooth muscle** *Am J Resp Cell Mol Biol* 1998, **19**:338-348
73. Lohse MJ, Benovic JL, Codina J, Caron MG and Lefkowitz RJ **Beta-arrestin: a protein that regulates beta-adrenergic receptor function** *Science* 1990, **248**:1547-1550
74. Ferguson SS, Downey WE 3rd, Colapietro AM, Barak LS, Menard L and Caron MG **Role of beta-arrestin in mediating agonist-promoted G protein-coupled receptor internalization** *Science* 1996, **271**:363-366
75. Goodman OB Jr, Krupnick JG, Santini F, Gurevich VV, Penn RB, Gagnon AW, Keen JH and Benovic JL **Beta-arrestin acts as a clathrin adaptor in endocytosis of the beta2-adrenergic receptor** *Nature* 1996, **383**:447-450
76. Huang C, Hepler JR, Chen LT, Gilman AG, Anderson RG and Mumby SM **Organization of G proteins and adenylyl cyclase at the plasma membrane** *Mol Biol Cell* 1997, **8**:2365-2378
77. Laporte JD, Moore PE, Panettieri RA, Moeller W, Heyder J and Shore SA **Prostanoids mediate IL-1beta-induced beta-adrenergic hyporesponsiveness in human airway smooth muscle cells** *Am J Physiol* 1998, **275**:L491-L501
78. Emala CW, Kuhl J, Hungerford CL and Hirshman CA **TNF-alpha inhibits isoproterenol-stimulated adenylyl cyclase activity in cultured airway smooth muscle cells** *Am J Physiol* 1997, **272**:L644-L650
79. Fong CY, Pang L, Holland E and Knox AJ **TGF-beta1 stimulates IL-8 release, COX-2 expression, and PGE[2] release in human airway smooth muscle cells** *Am J Physiol Lung Cell Mol Physiol* 2000, **279**:L201-L207
80. Pang L, Holland E and Knox AJ **Role of cyclo-oxygenase-2 induction in interleukin-1beta induced attenuation of cultured human airway smooth muscle cell cyclic AMP generation in response to isoprenaline** *Br J Pharmacol* 1998, **125**:1320-1328
81. Pye JL, Mak JC, Dupont LJ, Verleden GM and Barnes PJ **Desensitization of the histamine H1-receptor and transcriptional down-regulation of histamine H1-receptor gene expression in bovine tracheal smooth muscle** *Br J Pharmacol* 1998, **125**:1477-1484
82. Gagnon AW, Kallal L and Benovic JL **Role of clathrin-mediated endocytosis in agonist-induced down-regulation of the beta2-adrenergic receptor** *J Biol Chem* 1998, **273**:6976-6981
83. Shenoy SK, McDonald PH, Kohout TA and Lefkowitz RJ **Regulation of receptor fate by ubiquitination of activated beta 2-adrenergic receptor and beta-arrestin** *Science* 2001, **294**:1307-1313

84. Marchese A and Benovic JL **Agonist-promoted ubiquitination of the G protein-coupled receptor CXCR4 mediates lysosomal sorting** *J Biol Chem* 2001, **276**:45509-45512
85. Chaturvedi K, Bandari P, Chinen N and Howells RD **Proteasome involvement in agonist-induced down-regulation of mu and delta opioid receptors** *J Biol Chem* 2001, **276**:12345-12355
86. Green SA, Turki J, Bejarano P, Hall IP and Liggett **Influence of beta2-adrenergic receptor genotypes on signal transduction in human airway smooth muscle cells** *Am J Respir Cell Mol Biol* 1995, **13**:25-33
87. Pype JL, Dupont LJ, Mak JC, Barnes PJ and Verleden GM **Regulation of H1-receptor coupling and H1-receptor mRNA by histamine in bovine tracheal smooth muscle** *Br J Pharmacol* 1998, **123**:984-990
88. Mak JC, Rousell J, Haddad EB and Barnes PJ **Transforming growth factor-beta1 inhibits beta2-adrenoceptor gene transcription** *Naunyn Schmiedeberg's Arch Pharmacol* 2000, **362**:520-525
89. Kalavantavanich K and Schramm CM **Dexamethasone potentiates high-affinity beta-agonist binding and g(s)alpha protein expression in airway smooth muscle** *Am J Physiol Lung Cell Mol Physiol* 2000, **278**:L1101-L1106
90. Mak JC, Roffel AF, Katsunuma T, Elzinga CR, Zaagsma J and Barnes PJ **Up-regulation of airway smooth muscle histamine H[1] receptor mRNA, protein, and function by beta[2]-adrenoceptor activation** *Mol Pharmacol* 2000, **57**:857-864
91. Mak JC, Nishikawa M and Barnes PJ **Glucocorticosteroids increase beta 2-adrenergic receptor transcription in human lung** *Am J Physiol* 1995, **268**:L41-L46
92. Mak JC, Nishikawa M, Shirasaki H, Miyayasu K and Barnes PJ **Protective effects of a glucocorticoid on downregulation of pulmonary beta 2-adrenergic receptors in vivo** *J Clin Invest* 1995, **96**:99-106
93. Forsythe SM, Kogut PC, McConville JF, Fu Y, McCauley JA, Halayko AJ, Liu HW, Kao A, Fernandes DJ, Bellam S, Fuchs E, Sinha S, Bell GI, Camoretti-Mercado B and Solway J **Structure and transcription of the human m3 muscarinic receptor gene** *Am J Respir Cell Mol Biol* 2002, **26**:298-305
94. Katsunuma T, Mak JC and Barnes PJ **Glucocorticoids reduce tachykinin NK2 receptor expression in bovine tracheal smooth muscle** *Eur J Pharmacol* 1998, **344**:99-106
95. Katsunuma T, Roffel AF, Elzinga CR, Zaagsma J, Barnes PJ and Mak JC **beta[2]-adrenoceptor agonist-induced upregulation of tachykinin NK[2] receptor expression and function in airway smooth muscle** *Am J Respir Cell Mol Biol* 1999, **21**:409-417
96. Koto H, Mak JC, Haddad EB, Xu WB, Salmon M, Barnes PJ and Chung KF **Mechanisms of impaired beta-adrenoceptor-induced airway relaxation by interleukin-1beta in vivo in the rat** *J Clin Invest* 1996, **98**:1780-1787
97. Rousell J, Haddad EB, Mak JC, Webb BL, Giembycz MA and Barnes PJ **Beta-Adrenoceptor-mediated down-regulation of M2 muscarinic receptors: role of cyclic adenosine 5'-monophosphate-dependent protein kinase and protein kinase C** *Mol Pharmacol* 1996, **49**:629-635
98. Witt-Enderby PA, Yamamura HI, Halonen M, Lai J, Palmer JD and Bloom J **Regulation of airway muscarinic cholinergic receptor subtypes by chronic anticholinergic treatment** *Mol Pharmacol* 1995, **47**:485-490
99. Liggett SB **Pharmacogenetics of beta-1- and beta-2-adrenergic receptors** *Pharmacology* 2000, **61**:167-173
100. Hall IP **Pharmacogenetics, pharmacogenomics and airway disease** *Respir Res* 2002, **3**:10
101. Scott MG, Swan C, Wheatley AP and Hall IP **Identification of novel polymorphisms within the promoter region of the human beta2 adrenergic receptor gene** *Br J Pharmacol* 1999, **126**:841-844
102. McGraw DW, Forbes SL, Kramer LA and Liggett SB **Polymorphisms of the 5' leader cistron of the human beta2-adrenergic receptor regulate receptor expression** *J Clin Invest* 1998, **102**:1927-1932
103. Small KM, Forbes SL, Brown KM and Liggett SB **An asn to lys polymorphism in the third intracellular loop of the human alpha 2A-adrenergic receptor imparts enhanced agonist-promoted Gi coupling** *J Biol Chem* 2000, **275**:38518-38523
104. Small KM, Brown KM, Forbes SL and Liggett SB **Polymorphic deletion of three intracellular acidic residues of the alpha 2B-adrenergic receptor decreases G protein-coupled receptor kinase-mediated phosphorylation and desensitization** *J Biol Chem* 2001, **276**:4917-4922
105. Mason DA, Moore JD, Green SA and Liggett SB **A gain-of-function polymorphism in a G-protein coupling domain of the human beta1-adrenergic receptor** *J Biol Chem* 1999, **274**:12670-12674
106. Rathz DA, Brown KM, Kramer LA and Liggett SB **Amino acid 49 polymorphisms of the human beta1-adrenergic receptor affect agonist-promoted trafficking** *J Cardiovasc Pharmacol* 2002, **39**:155-160
107. Ross EM and Wilkie TM **GTPase-activating proteins for heterotrimeric G proteins: regulators of G protein signaling (RGS) and RGS-like proteins** *Annu Rev Biochem* 2000, **69**:795-827
108. Carman CV, Parent JL, Day PW, Pronin AN, Sternweis PM, Wedegaertner PB, Gilman AG, Benovic JL and Kozasa T **Selective regulation of Galpha(q/11) by an RGS domain in the G protein-coupled receptor kinase GRK2** *J Biol Chem* 1999, **274**:34483-34492
109. Milligan G, Mullaney I, Kim GD and MacEwan D **Regulation of the stoichiometry of protein components of the stimulatory adenylyl cyclase cascade** *Adv Pharmacol* 1998, **42**:462-465
110. Finney PA, Belvisi MG, Donnelly LE, Chuang TT, Mak JC, Scorer C, Barnes PJ, Adcock IM and Giembycz MA **Albuterol-induced down-regulation of Galpha accounts for pulmonary beta[2]-adrenoceptor desensitization in vivo** *J Clin Invest* 2000, **106**:125-135
111. Finney PA, Donnelly LE, Belvisi MG, Chuang TT, Birrell M, Harris A, Mak JC, Scorer C, Barnes PJ, Adcock IM and Giembycz MA **Chronic systemic administration of salmeterol to rats promotes pulmonary beta[2]-adrenoceptor desensitization and down-regulation of G(s alpha)** *Br J Pharmacol* 2001, **132**:1261-1270
112. Mak JC, Hisada T, Salmon M, Barnes PJ and Chung KF **Glucocorticoids reverse IL-1beta-induced impairment of beta-adrenoceptor-mediated relaxation and up-regulation of G-protein-coupled receptor kinases** *Br J Pharmacol* 2002, **135**:987-996
113. Hakonarson H, Herrick DJ, Gonzalez Serrano P and Grunstein MM **Mechanism of cytokine-induced modulation of beta-adrenoceptor responsiveness in airway smooth muscle** *J Clin Invest* 1996, **97**:2593-2600
114. Hakonarson H, Herrick DJ and Grunstein MM **Mechanism of impaired beta-adrenoceptor responsiveness in atopic sensitized airway smooth muscle** *Am J Physiol* 1995, **269**(Lung Cell Mol Physiol 13):L645-L652
115. Rebecchi MJ and Pentylala SN **Structure, function, and control of phosphoinositide-specific phospholipase C** *Physiol Rev* 2000, **80**:1291-1335
116. Willars GB, Nahorski SR and Challiss RA **Differential regulation of muscarinic acetylcholine receptor-sensitive polyphosphoinositide pools and consequences for signaling in human neuroblastoma cells** *J Biol Chem* 1998, **273**:5037-5046
117. Wang T, Dowal L, El-Maghrabi MR, Rebecchi M and Scarlata S **The pleckstrin homology domain of phospholipase C-beta[2] links the binding of gbetagamma to activation of the catalytic core** *J Biol Chem* 2000, **275**:7466-7469
118. Wang T, Pentylala S, Rebecchi MJ and Scarlata S **Differential association of the pleckstrin homology domains of phospholipases C-beta 1, C-beta 2, and C-delta 1 with lipid bilayers and the beta gamma subunits of heterotrimeric G proteins** *Biochemistry* 1999, **38**:1517-1524
119. Yue C, Ku CY, Liu M, Simon MI and Sanborn BM **Molecular mechanism of the inhibition of phospholipase C beta 3 by protein kinase C** *J Biol Chem* 2000, **275**:30220-30225
120. Liu M and Simon MI **Regulation by cAMP-dependent protein kinase of a G-protein-mediated phospholipase C** *Nature* 1996, **382**:83-87
121. Yue C, Dodge KL, Weber G and Sanborn BM **Phosphorylation of serine 1105 by protein kinase A inhibits phospholipase Cbeta3 stimulation by Galphaq** *J Biol Chem* 1998, **273**:18023-18027
122. Ryu SH, Kim UH, Wahl MI, Brown AB, Carpenter G, Huang KP and Rhee SG **Feedback regulation of phospholipase C-beta by protein kinase C** *J Biol Chem* 1990, **265**:17941-17945
123. Berstein G, Blank JL, Jhon DY, Exton JH, Rhee SG and Ross EM **Phospholipase C-beta 1 is a GTPase-activating protein for Gq/11, its physiologic regulator** *Cell* 1992, **70**:411-418

124. Tolloczko B, Tao FC, Zacour ME and Martin JG **Tyrosine kinase dependent calcium signaling in airway smooth muscle cells** *Am J Physiol Lung Cell Mol Physiol* 2000, **278**:L1138-L1145
125. Tao FC, Tolloczko B, Mitchell CA, Powell W S and Martin JG **Inositol (1,4,5)trisphosphate metabolism and enhanced calcium mobilization in airway smooth muscle of hyperresponsive rats** *Am J Respir Cell Mol Biol* 2000, **23**:514-520
126. Tolloczko B, Turkewitsch P, Choudry S, Bisotto S, Fixman ED and Martin JG **Src modulates serotonin-induced calcium signaling by regulating phosphatidylinositol 4,5-bisphosphate** *Am J Physiol Lung Cell Mol Physiol* 2002, **282**:L1305-L1313
127. Pyne S and Pyne NJ **Bradykinin-stimulated phosphatidylcholine hydrolysis in airway smooth muscle: the role of Ca²⁺ and protein kinase C** *Biochem J* 1995, **311**:637-642
128. Taussig R and Gilman AG **Mammalian membrane-bound adenylyl cyclases** *J Biol Chem* 1995, **270**:1-4
129. Smit MJ and Iyengar R **Mammalian adenylyl cyclases** *Adv Second Messenger Phosphoprotein Res* 1998, **32**:1-21
130. Choi EJ, Wong ST, Dittman AH and Storm DR **Phorbol ester stimulation of the type I and type III adenylyl cyclases in whole cells** *Biochemistry* 1993, **32**:1891-1894
131. Kawabe J, Ebina T, Toya Y, Oka N, Schwencke C, Duzic E and Ishikawa Y **Regulation of type V adenylyl cyclase by PMA-sensitive and -insensitive protein kinase C isoenzymes in intact cells** *FEBS Lett* 1996, **384**:273-276
132. Kawabe J, Iwami G, Ebina T, Ohno S, Katada T, Ueda Y, Homcy CJ and Ishikawa Y **Differential activation of adenylyl cyclase by protein kinase C isoenzymes** *J Biol Chem* 1994, **269**:16554-16558
133. Jacobowitz O and Iyengar R **Phorbol ester-induced stimulation and phosphorylation of adenylyl cyclase 2** *Proc Natl Acad Sci U S A* 1994, **91**:10630-10634
134. Yoshimura M and Cooper DM **Type-specific stimulation of adenylyl cyclase by protein kinase C** *J Biol Chem* 1993, **268**:4604-4607
135. Premont RT, Jacobowitz O and Iyengar R **Lowered responsiveness of the catalyst of adenylyl cyclase to stimulation by GS in heterologous desensitization: a role for adenosine 3',5'-monophosphate-dependent phosphorylation** *Endocrinology* 1992, **131**:2774-2784
136. Murthy KS, Zhou H and Makhlof GM **PKA-dependent activation of PDE3A and PDE4 and inhibition of adenylyl cyclase V/VI in smooth muscle** *Am J Physiol Cell Physiol* 2002, **282**:C508-C517
137. Iwami G, Kawabe J, Ebina T, Cannon PJ, Homcy CJ and Ishikawa Y **Regulation of adenylyl cyclase by protein kinase A** *J Biol Chem* 1995, **270**:12481-12484
138. Federman AD, Conklin BR, Schrader KA, Reed RR and Bourne HR **Hormonal stimulation of adenylyl cyclase through Gi-protein beta gamma subunits** *Nature* 1992, **356**:159-161
139. Tang W-J and Gilman AG **Type-specific regulation of adenylyl cyclase by G protein beta subunits** *Science* 1991, **254**:1500-1503
140. Gao B and Gilman AG **Cloning and expression of a widely distributed (type IV) adenylyl cyclase** *Proc Natl Acad Sci USA* 1991, **89**:10178-10182
141. Ostrom RS **New determinants of receptor-effector coupling: trafficking and compartmentation in membrane microdomains** *Mol Pharmacol* 2002, **61**:473-476
142. Ostrom RS, Gregorian C, Drenan RM, Xiang Y, Regan JW and Insel PA **Receptor number and caveolar co-localization determine receptor coupling efficiency to adenylyl cyclase** *J Biol Chem* 2001, **276**:42063-42069
143. Hope HR and Pike LJ **Phosphoinositides and phosphoinositide-utilizing enzymes in detergent-insoluble lipid domains** *Mol Biol Cell* 1996, **7**:843-851
144. Pyne NJ and Pyne S **PDGF-stimulated cyclic AMP formation in airway smooth muscle: assessment of the roles of MAP kinase, cytosolic phospholipase A₂, and arachidonate metabolites** *Cell Signal* 1998, **10**:363-369
145. Lampert A, Nirenberg M and Klee WA **Tolerance and dependence evoked by an endogenous opioid peptide** *Proc Natl Acad Sci USA* 1976, **73**:3165-3167
146. Zadina JE, Chang SL, Ge LJ and Kastin AJ **Mu opiate receptor down-regulation by morphine and up-regulation by naxolone in SH-SY5Y human neuroblastoma cells** *J Pharmacol Exp Ther* 1993, **265**:254-262
147. Nevo I, Avidor-Reiss T, Levy R, Bayewitch M, Heldman E and Vogel Z **Regulation of adenylyl cyclase isozymes on acute and chronic activation of inhibitory receptors** *Mol Pharmacol* 1998, **54**:419-426
148. Lemanske RF Jr and Busse WW **Asthma** *JAMA* 1997, **278**:1855-1873
149. Chiappara G, Gagliardo R, Siena A, Bonsignore MR, Bousquet J, Bonsignore G and Vignola AM **Airway remodelling in the pathogenesis of asthma** *Curr Opin Allergy Clin Immunol* 2001, **1**:85-93
150. Fahy JV, Corry DB and Boushey HA **Airway inflammation and remodeling in asthma** *Curr Opin Pulm Med* 2000, **6**:15-20
151. Hirst SJ, Walker TR and Chilvers ER **Phenotypic diversity and molecular mechanisms of airway smooth muscle proliferation in asthma** *Eur Respir J* 2000, **16**:159-177
152. Jeffery PK **Morphology of the airway wall in asthma and in chronic obstructive pulmonary disease** *Am Rev Respir Dis* 1991, **143**:1152-1158
153. Stewart AG **Airway wall remodelling and hyperresponsiveness: modelling remodelling in vitro and in vivo** *Pulm Pharmacol Ther* 2001, **14**:255-265
154. Martin JG, Duguet A and Eidelman DH **The contribution of airway smooth muscle to airway narrowing and airway hyperresponsiveness in disease** *Eur Respir J* 2000, **16**:349-354
155. Sofia M, Mormile M, Faraone S, Alifano M, Zofra S, Romano L and Carratu L **Increased endothelin-like immunoreactive material on bronchoalveolar lavage fluid from patients with bronchial asthma and patients with interstitial lung disease** *Respiration* 1993, **60**:89-95
156. Panettieri RA **Airway smooth muscle cell growth and proliferation. In Airway Smooth Muscle: Development, Regulation, and Contractility (Edited by: Raeburn D, Giembycz MA) Basel: Birkhauser Verlag** 1994, 41-68
157. Zehr BB, Casale TB, Wood D, Floerchinger C, Richerson HB and Hunninghake GW **Use of segmental airway lavage to obtain relevant mediators from the lungs of asthmatic and control subjects** *Chest* 1989, **95**:1059-1063
158. Casale TB, Wood D, Richerson HB, Trapp S, Metzger WJ, Zavala D and Hunninghake GW **Elevated bronchoalveolar lavage fluid histamine levels in allergic asthmatics are associated with methacholine bronchial hyperresponsiveness** *J Clin Invest* 1987, **79**:1197-1203
159. Ackerman V, Carpi S, Bellini A, Vassalli G, Marini M and Mattoli S **Constitutive expression of endothelin in bronchial epithelial cells of patients with symptomatic and asymptomatic asthma and modulation by histamine and interleukin-1** *J Allergy Clin Immunol* 1995, **96**:618-627
160. Hamilton LM, Davies DE, Wilson SJ, Kimber I, Dearman RJ and Holgate ST **The bronchial epithelium in asthma – much more than a passive barrier** *Monaldi Arch Chest Dis* 2001, **56**:48-54
161. Holgate ST **Epithelial damage and response** *Clin Exp Allergy* 2000, **30**(Suppl 1):37-41
162. Frossard N, Stretton CD and Barnes PJ **Modulation of bradykinin responses in airway smooth muscle by epithelial enzymes** *Agents Actions* 1990, **31**:204-209
163. Knight DA, Adcock JA, Phillips MJ and Thompson PJ **The effect of epithelium removal on human bronchial smooth muscle responsiveness to acetylcholine and histamine** *Pulm Pharmacol* 1990, **3**:198-202
164. Raeburn D **Putative role of epithelial derived factors in airway smooth muscle reactivity** *Agents Actions Suppl* 1990, **31**:259-274
165. Amrani Y and Panettieri RA Jr **Modulation of calcium homeostasis as a mechanism for altering smooth muscle responsiveness in asthma** *Curr Opin Allergy Clin Immunol* 2002, **2**:39-45
166. Cui ZH, Skoogh BE, Pullerits T and Lotvall J **Bronchial hyperresponsiveness and airway wall remodelling induced by exposure to allergen for 9 weeks** *Allergy* 1999, **54**:1074-1082
167. Patel HJ, Douglas GJ, Herd CM, Spina D, Giembycz MA, Barnes PJ, Belvisi MG and Page CP **Antigen-induced bronchial hyperresponsiveness in the rabbit is not dependent on M[2]-receptor dysfunction** *Pulm Pharmacol Ther* 1999, **12**:245-255
168. Schmidt D, Ruehlmann E, Branscheid D, Magnussen H and Rabe KF **Passive sensitization of human airways increases responsiveness to leukotriene C₄** *Eur Respir J* 1999, **14**:315-319
169. Grunstein MM, Hakonarson H, Leiter J, Chen M, Whelan R, Grunstein JS and Chuang S **IL-13-dependent autocrine signaling mediates altered responsiveness of IgE-sensitized airway smooth muscle** *Am J Physiol Lung Cell Mol Physiol* 2002, **282**:L520-L528

170. Hakonarson H, Herrick DJ, Serrano PG and Grunstein MM **Auto-crine role of interleukin 1beta in altered responsiveness of atopic asthmatic sensitized airway smooth muscle** *J Clin Invest* 1997, **99**:117-124
171. Hakonarson H, Maskeri N, Carter C, Hodinka RL, Campbell D and Grunstein MM **Mechanism of rhinovirus-induced changes in airway smooth muscle responsiveness** *J Clin Invest* 1998, **102**:1732-1741
172. Hakonarson H, Carter C, Kim C and Grunstein MM **Altered expression and action of the low-affinity IgE receptor FcepsilonRII (CD23) in asthmatic airway smooth muscle** *J Allergy Clin Immunol* 1999, **104**:575-584
173. Yang CM, Chien CS, Wang CC, Hsu YM, Chiu CT, Lin CC, Luo SF and Hsiao LD **Interleukin-1beta enhances bradykinin-induced phosphoinositide hydrolysis and Ca2+ mobilization in canine tracheal smooth-muscle cells: involvement of the Ras/Raf/mitogen-activated protein kinase (MAPK) kinase (MEK)/MAPK pathway** *Biochem J* 2001, **354**:439-446
174. Schmidlin F, Scherrer D, Daeffler L, Bertrand C, Landry Y and Gies JP **Interleukin-1beta induces bradykinin B2 receptor gene expression through a prostanoid cyclic AMP-dependent pathway in human bronchial smooth muscle cells** *Mol Pharmacol* 1998, **53**:1009-1015
175. Pype JL, Xu H, Schuermans M, Dupont LJ, Wuyts W, Mak JC, Barnes PJ, Demedts MG and Verleden GM **Mechanisms of interleukin 1beta-induced human airway smooth muscle hyporesponsiveness to histamine. Involvement of p38 MAPK NF-kappaB** *Am J Respir Crit Care Med* 2001, **163**:1010-1017
176. Parris JR, Cobban HJ, Littlejohn AF, MacEwan DJ and Nixon GF **Tumour necrosis factor-alpha activates a calcium sensitization pathway in guinea-pig bronchial smooth muscle** *J Physiol* 1999, **518**:561-569
177. Amrani Y, Chen H and Panettieri RA **Activation of tumor necrosis factor receptor 1 in airway smooth muscle: a potential pathway that modulates bronchial hyperresponsiveness in asthma** *Resp* 2000, **1**:1-5
178. Hirata F, Lee JY, Sakamoto T, Nomura A, Uchida Y, Hirata A and Hasegawa S **IL-1 beta regulates the expression of the Gi2 alpha gene via lipid mediators in guinea pig tracheal muscle** *Biochem Biophys Res Commun* 1994, **203**:1889-1896
179. Lee JY, Uchida Y, Sakamoto T, Hirata A, Hasegawa S and Hirata F **Alteration of G protein levels in antigen-challenged guinea pigs** *J Pharmacol Exp Ther* 1994, **271**:1713-1720
180. Hotta K, Emala CW and Hirshman CA **TNF-alpha upregulates Gi-alpha and Gqalpha protein expression and function in human airway smooth muscle cells** *Am J Physiol* 1999, **276**:L405-L411
181. Amrani Y, Krymskaya V, Maki C and Panettieri RA Jr **Mechanisms underlying TNF-alpha effects on agonist-mediated calcium homeostasis in human airway smooth muscle cells** *Am J Physiol* 1997, **273**:L1020-L1028
182. Barnes PJ **Effect of beta-agonists on inflammatory cells** *J Allergy Clin Immunol* 1999, **104**:S10-S17
183. Busse W **Infections**. In *Asthma: basic mechanisms and clinical management* (Edited by: Thomson NC) London: Academic Press 1988, 483-502
184. Cerrina J, Le Roy Ladurie M, Labat C, Raffestin B, Bayol A and Brink C **Comparison of human bronchial muscle responses to histamine in vivo with histamine and isoproterenol agonists in vitro** *Am Rev Respir Dis* 1986, **134**:57-61
185. Goldie RG, Spina D, Henry PJ, Lulich KM and Paterson JW **In vitro responsiveness of human asthmatic bronchus to carbachol, histamine, beta-adrenoceptor agonists and theophylline** *Br J Clin Pharmacol* 1986, **22**:669-676
186. McGraw DW and Liggett SB **Heterogeneity in b-adrenergic receptor kinase in the lung accounts for cell-specific desensitization of the b2-adrenergic receptor** *J Biol Chem* 1997, **272**:7338-7344
187. Goldie RG **Receptors in asthmatic airways** *Am Rev Respir Dis* 1990, **141**:S151-S156
188. Barnes PJ **Neural control of human airways in health and disease** *Am Rev Respir Dis* 1986, **134**:1289-1314
189. Paterson J, Lulich K and Goldie R **Drug effects on beta-adrenergic receptor function in asthma** in *Beta-adrenoceptors in asthma*. (Edited by: J Morley) Academic Press: London 1984, 245-268
190. Dewar JC, Wheatley AP, Venn A, Morrison JF, Britton J and Hall IP **Beta2-adrenoceptor polymorphisms are in linkage disequilibrium, but are not associated with asthma in an adult population** *Clin Exp Allergy* 1998, **28**:442-448
191. Israel E **Effect of polymorphism of the beta[2]-adrenergic receptor on response to regular use of albuterol in asthma** *Int Arch Allergy Immunol* 2001, **124**:183-186
192. Martinez FD, Graves PE, Baldini M, Solomon S and Erickson R **Association between genetic polymorphisms of the beta2-adrenoceptor and response to albuterol in children with and without a history of wheezing** *J Clin Invest* 1997, **100**:3184-3188
193. Israel E **The effect of polymorphisms of the beta[2]-adrenergic receptor on the response to regular use of albuterol in asthma** *Am J Respir Crit Care Med* 2000, **162**:75-80
194. Chiba Y, Sakai H, Suenaga H, Kamata K and Misawa M **Enhanced Ca2+ sensitization of the bronchial smooth muscle contraction in antigen-induced airway hyperresponsive rats** *Res Commun Mol Pathol Pharmacol* 1999, **106**:77-85
195. Kong SK, Halayko AJ and Stephens NL **Increased myosin phosphorylation in sensitized canine tracheal smooth muscle** *Am J Physiol* 1990, **259**:L53-L56
196. Jiang H, Rao K, Halayko AJ, Liu X and Stephens NL **Ragweed sensitization-induced increase of myosin light chain kinase content in canine airway smooth muscle** *Am J Respir Cell Mol Biol* 1992, **7**:567-573
197. Ammit AJ, Armour CL and Black JL **Smooth-muscle myosin light-chain kinase content is increased in human sensitized airways** *Am J Respir Crit Care Med* 2000, **161**:257-263
198. Chiba Y, Sakai H and Misawa M **Augmented acetylcholine-induced translocation of RhoA in bronchial smooth muscle from antigen-induced airway hyperresponsive rats** *Br J Pharmacol* 2001, **133**:886-890
199. McGraw DW, Chai SE, Hiller FC and Cornett LE **Regulation of the beta 2-adrenergic receptor and its mRNA in the rat lung by dexamethasone** *Exp Lung Res* 1995, **21**:535-546
200. Jacoby DB, Yost BL, Kumaravel B, Chan-Li Y, Xiao HQ, Kawashima K and Fryer AD **Glucocorticoid treatment increases inhibitory m[2] muscarinic receptor expression and function in the airways** *Am J Respir Cell Mol Biol* 2001, **24**:485-491
201. Schmidlin F, Scherrer D, Landry Y and Gies JP **Glucocorticoids inhibit the bradykinin B2 receptor increase induced by interleukin-1beta in human bronchial smooth muscle cells** *Eur J Pharmacol* 1998, **354**:R7-R8
202. Hardy E, Farahani M and Hall IP **Regulation of histamine H1 receptor coupling by dexamethasone in human cultured airway smooth muscle** *Br J Pharmacol* 1996, **118**:1079-1084
203. Peters SP and Fish JE **Prior use of long-acting beta-agonists: friend or foe in the emergency department?** *Am J Med* 1999, **107**:283-285
204. Cheung D, Timmers MC, Zwinderman AH, Bel EH, Dijkman JH and Sterk PJ **Long-term effects of a long-acting beta 2-adrenoceptor agonist, salmeterol, on airway hyperresponsiveness in patients with mild asthma [see comments]** *N Engl J Med* 1992, **327**:1198-1203
205. Bhagat R, Kalra S, Swystun VA and Cockcroft DW **Rapid onset of tolerance to the bronchoprotective effect of salmeterol** *Chest* 1995, **108**:1235-1239
206. Abisheganaden J and Boushey HA **Long-acting inhaled beta 2-agonists and the loss of "bronchoprotective" efficacy** *Am J Med* 1998, **104**:494-497
207. Lipworth B **Tolerance with beta-agonists – a clinical problem?** In *Beta-2-agonists in Asthma Treatment* (Edited by: Pauwels R, O'Byrne PM) New York: Marcel Dekker, Inc 1997, 349-365
208. January B, Seibold A, Allal C, Whaley BS, Knoll BJ, Moore RH, Dickey BF, Barber R and Clark RB **Salmeterol-induced desensitization, internalization and phosphorylation of the human beta2-adrenoceptor** *Br J Pharmacol* 1998, **123**:701-711
209. Clark RB, Allal C, Friedman J, Johnson M and Barber R **Stable activation and desensitization of beta 2-adrenergic receptor stimulation of adenylyl cyclase by salmeterol: evidence for quasi-irreversible binding to an exosite** *Mol Pharmacol* 1996, **49**:182-189
210. Korosec M, Novak RD, Myers E, Skowronski M and McFadden ER Jr **Salmeterol does not compromise the bronchodilator response to albuterol during acute episodes of asthma** *Am J Med* 1999, **107**:209-213

211. Pierce KL, Luttrell LM and Lefkowitz RJ **New mechanisms in heptahelical receptor signaling to mitogen activated protein kinase cascades** *Oncogene* 2001, **20**:1532-1539
212. Gutkind JS **The pathways connecting G-protein coupled receptors to the nucleus through divergent mitogen-activated protein kinase cascades.** *J Biol Chem* 1998, **273**:1839-1842
213. Yang CM, Yo YL, Hsieh JT and Ong R **5-Hydroxytryptamine receptor-mediated phosphoinositide hydrolysis in canine cultured tracheal smooth muscle cells** *Br J Pharmacol* 1994, **111**:777-786
214. Zacour ME and Martin JG **Enhanced growth response of airway smooth muscle in inbred rats with airway hyperresponsiveness** *Am J Respir Cell Mol Biol* 1996, **15**:590-599
215. Tolloczko B, Jia YL and Martin JG **Serotonin-evoked calcium transients in airway smooth muscle cells** *Am J Physiol* 1995, **269**:L234-L240
216. Abebe W and Mustafa SJ **AI adenosine receptor-mediated Ins(1,4,5)P3 generation in allergic rabbit airway smooth muscle** *Am J Physiol* 1998, **275**:L990-L997
217. Nyce JW and Metzger WJ **DNA antisense therapy for asthma in an animal model** *Nature* 1997, **385**:721-725
218. Michoud MC, Tolloczko B and Martin JG **Effects of purine nucleotides and nucleoside on cytosolic calcium levels in rat tracheal smooth muscle cells** *Am J Respir Cell Mol Biol* 1997, **16**:199-205
219. Michoud MC, Tao FC, Pradhan AA and Martin JG **Mechanisms of the potentiation by adenosine of adenosine triphosphate-induced calcium release in tracheal smooth-muscle cells** *Am J Respir Cell Mol Biol* 1999, **21**:30-36
220. Kneussl MP and Richardson JB **Alpha-adrenergic receptors in human and canine tracheal and bronchial smooth muscle** *J Appl Physiol* 1978, **45**:307-311
221. Noveral JP and Grunstein MM **Adrenergic receptor-mediated regulation of cultured rabbit airway smooth muscle cell** *Am J Physiol* 1994, **267**:L291-L299
222. Barnes PJ and Basbaum CB **Mapping of adrenergic receptors in the trachea by autoradiography** *Exp Lung Res* 1983, **5**:183-192
223. Barnes PJ, Basbaum CB and Nadel JA **Autoradiographic localization of autonomic receptors in airway smooth muscle. Marked differences between large and small airways** *Am Rev Respir Dis* 1983, **127**:758-762
224. Zaagsma J, van der Heijden PJ, van der Schaar MW and Bank CM **Differentiation of functional adrenoceptors in human and guinea pig airways** *Eur J Respir Dis Suppl* 1984, **135**:16-33
225. Hall IP, Widdop S, Townsend P and Daykin K **Control of cyclic AMP levels in primary cultures of human tracheal smooth muscle cells** *Br J Pharmacol* 1992, **107**:422-428
226. Tomasic M, Boyle JP, Worley JF 3rd and Kotlikoff MI **Contractile agonists activate voltage-dependent calcium channels in airway smooth muscle cells** *Am J Physiol* 1992, **263**:C106-C113
227. Farmer SG, Ensor JE and Burch RM **Evidence that cultured airway smooth muscle cells contain bradykinin B2 and B3 receptors** *Am J Respir Cell Mol Biol* 1991, **4**:273-277
228. Mak JC and Barnes PJ **Autoradiographic visualization of bradykinin receptors in human and guinea pig lung** *Eur J Pharmacol* 1991, **194**:37-43
229. Marsh KA and Hill SJ **Bradykinin B2 receptor-mediated phosphoinositide hydrolysis in bovine cultured tracheal smooth muscle cells** *Br J Pharmacol* 1992, **107**:443-447
230. Pyne S and Pyne NJ **Bradykinin stimulates phospholipase D in primary cultures of guinea-pig tracheal smooth muscle** *Biochem Pharmacol* 1993, **45**:593-603
231. Pyne S and Pyne NJ **Bradykinin-stimulated phosphatidate and 1,2-diacylglycerol accumulation in guinea-pig airway smooth muscle: evidence for regulation 'down-stream' of phospholipases** *Cell Signal* 1994, **6**:269-277
232. Sarau HM **Identification, molecular cloning, expression, and characterization of a cysteinyl leukotriene receptor** *Mol Pharmacol* 1999, **56**:657-663
233. Lynch KR **Characterization of the human cysteinyl leukotriene CysLT1 receptor** *Nature* 1999, **399**:789-793
234. Panettieri RA, Tan EM, Ciocca V, Luttmann MA, Leonard TB and Hay DW **Effects of LTD4 on human airway smooth muscle cell proliferation, matrix expression, and contraction in vitro: differential sensitivity to cysteinyl leukotriene receptor antagonists** *Am J Respir Cell Mol Biol* 1998, **19**:453-461
235. Figueroa DJ, Breyer RM, Defoe SK, Kargman S, Daugherty BL, Waldburger K, Liu Q, Clements M, Zeng Z, O'Neill GP, Jones TR, Lynch KR, Austin CP and Evans JF **Expression of the cysteinyl leukotriene 1 receptor in normal human lung and peripheral blood leukocytes** *Am J Respir Crit Care Med* 2001, **163**:226-233
236. Jonsson EW **Functional characterisation of receptors for cysteinyl leukotrienes in smooth muscle** *Acta Physiol Scand Suppl* 1998, **641**:1-55
237. Hay DW, Douglas SA, Ao Z, Moesker RM, Self GJ, Rigby PJ, Luttmann MA and Goldie RG **Differential modulation of endothelin ligand-induced contraction in isolated tracheae from endothelin B (ET(B)) receptor knockout mice** *Br J Pharmacol* 2001, **132**:1905-1915
238. Kizawa Y, Ohuchi N, Saito K, Kusama T and Murakami H **Effects of endothelin-I and nitric oxide on proliferation of cultured guinea pig bronchial smooth muscle cells** *Comp Biochem Physiol C Toxicol Pharmacol* 2001, **128**:495-501
239. D'Agostino B, Gallelli L, Falciani M, Di Pierro P, Rossi F and Filippelli A **Endothelin-I induced bronchial hyperresponsiveness in the rabbit: an ET(A) receptor-mediated phenomenon** *Naunyn Schmiedebergs Arch Pharmacol* 1999, **360**:665-669
240. Hay DW, Luttmann MA, Muccitelli RM and Goldie RG **Endothelin receptors and calcium translocation pathways in human airways** *Naunyn Schmiedebergs Arch Pharmacol* 1999, **359**:404-410
241. Takahashi T, Barnes PJ, Kawikova I, Yacoub MH, Warner TD and Belvisi MG **Contraction of human airway smooth muscle by endothelin-I and IRL 1620: effect of bosentan** *Eur J Pharmacol* 1997, **324**:219-222
242. Goldie RG, Henry PJ, Knott PG, Self GJ, Luttmann MA and Hay DW **Endothelin-I receptor density, distribution, and function in human isolated asthmatic airways** *Am J Respir Crit Care Med* 1995, **152**:1653-1658
243. Cerutis DR, Nogami M, Anderson JL, Churchill JD, Romberger DJ, Rennard SI and Toews ML **Lysophosphatidic acid and EGF stimulate mitogenesis in human airway smooth muscle cells.** *Am J Physiol* 1997, **273**:L10-L15
244. Nogami M, Whittle SM, Romberger DJ, Rennard SI and Toews M **Lysophosphatidic acid regulation of cyclic AMP accumulation in cultured human airway smooth muscle cells** *Mol Pharmacol* 1995, **48**:766-773
245. Toews ML, Ustinova EE and Schultz HD **Lysophosphatidic acid enhances contractility of isolated airway smooth muscle** *J Appl Physiol* 1997, **83**:1216-1222
246. Fortner CN, Breyer RM and Paul RJ **EP2 receptors mediate airway relaxation to substance P, ATP, and PGE2** *Am J Physiol Lung Cell Mol Physiol* 2001, **281**:L469-L474
247. Sheller JR, Mitchell D, Meyrick B, Oates J and Breyer R **EP[2] receptor mediates bronchodilation by PGE[2] in mice** *J Appl Physiol* 2000, **88**:2214-2218
248. Grandordy BM and Barnes PJ **Airway smooth muscle and disease workshop: phosphoinositide turnover** *Am Rev Respir Dis* 1987, **136**:S17-S20
249. Daykin K, Widdop S and Hall IP **Control of histamine induced inositol phospholipid hydrolysis in cultured human tracheal smooth muscle cells** *Eur J Pharmacol* 1993, **246**:135-140
250. Pascual RM, Billington CK, Hall IP, Panettieri RA, Fish JE, Peters SP and Penn RB **Comparison of chronic cytokine versus PGE2 pretreatment effects on G protein-coupled receptor (GPCR) signaling in human airway smooth muscle (HASM) [abstract].** *Am J Respir Crit Care Med* 2000, **161**:A696
251. Mak JC and Barnes PJ **Autoradiographic visualization of muscarinic receptor subtypes in human and guinea pig lung** *Am Rev Respir Dis* 1990, **141**:1559-1568
252. Mak JC, Baraniuk JN and Barnes PJ **Localization of muscarinic receptor subtype mRNAs in human lung** *Am J Respir Cell Mol Biol* 1992, **7**:344-348
253. Roffel AF, Elzinga CR and Zaagsma J **Muscarinic M3 receptors mediate contraction of human central and peripheral airway smooth muscle** *Pulm Pharmacol* 1990, **3**:47-51
254. Roffel AF, Meurs H, Elzinga CR and Zaagsma J **Characterization of the muscarinic receptor subtype involved in phosphoinositide metabolism in bovine tracheal smooth muscle** *Br J Pharmacol* 1990, **99**:293-296
255. Yang CM, Chou SP, Wang YY, Hsieh JT and Ong R **Muscarinic regulation of cytosolic free calcium in canine tracheal smooth**

- muscle cells: **Ca²⁺ requirement for phospholipase C activation** *Br J Pharmacol* 1993, **110**:1239-1247
256. Watson N, Barnes PJ and MacLagan J **Actions of methocramine, a muscarinic M2 receptor antagonist, on muscarinic and nicotinic cholinceptors in guinea-pig airways in vivo and in vitro** *Br J Pharmacol* 1992, **105**:107-112
257. Mapp CE, Miotto D, Braccioni F, Saetta M, Turato G, Maestrelli P, Krause JE, Karpitskiy V, Boyd N, Geppetti P and Fabbri LM **The distribution of neurokinin-1 and neurokinin-2 receptors in human central airways** *Am J Respir Crit Care Med* 2000, **161**:207-215
258. Mak JC, Astolfi M, Zhang XL, Evangelista S, Manzini S and Barnes PJ **Autoradiographic mapping of pulmonary NK1 and NK2 tachykinin receptors and changes after repeated antigen challenge in guinea pigs** *Peptides* 1996, **17**:1389-1395
259. Noveral JP and Grunstein MM **Tachykinin regulation of airway smooth muscle cell proliferation** *Am J Physiol* 1995, **269**:L339-L343
260. Grandordy BM, Frossard N, Rhoden KJ and Barnes PJ **Tachykinin-induced phosphoinositide breakdown in airway smooth muscle and epithelium: relationship to contraction** *Mol Pharmacol* 1988, **33**:515-519
261. Berger P, Perng DW, Thabrew H, Compton SJ, Cairns JA, McEuen AR, Marthan R, Tunon De Lara JM and Walls AF **Tryptase and agonists of PAR-2 induce the proliferation of human airway smooth muscle cells** *J Appl Physiol* 2001, **91**:1372-1379
262. Berger P, Tunon-De-Lara JM, Savineau JP and Marthan R **Selected contribution: tryptase-induced PAR-2-mediated Ca(2+) signaling in human airway smooth muscle cells** *J Appl Physiol* 2001, **91**:995-1003
263. Kawikova I, Barnes PJ, Takahashi T, Tadjkarimi S, Yacoub MH and Belvisi MG **8-Epi-PGF2 alpha, a novel noncyclooxygenase-derived prostaglandin, constricts airways in vitro** *Am J Respir Crit Care Med* 1996, **153**:590-596
264. Noveral JP and Grunstein MM **Role and mechanism of thromboxane-induced proliferation of cultured airway smooth muscle cells** *Am J Physiol* 1992, **263**:L555-L561
265. Tilley SL, Coffman TM and Koller BH **Mixed messages: modulation of inflammation and immune responses by prostaglandins and thromboxanes** *J Clin Invest* 2001, **108**:15-23
266. Armour CL, Johnson PR, Alfredson ML and Black JL **Characterization of contractile prostanoid receptors on human airway smooth muscle** *Eur J Pharmacol* 1989, **165**:215-222
267. Carstairs JR and Barnes PJ **Visualization of vasoactive intestinal peptide receptors in human and guinea pig lung** *J Pharmacol Exp Ther* 1986, **239**:249-255
268. Lazarus SC, Basbaum CB, Barnes PJ and Gold WM **cAMP immunocytochemistry provides evidence for functional VIP receptors in trachea** *Am J Physiol* 1986, **251**:C115-C119
269. Winder SJ and Walsh MP **Smooth muscle calponin. Inhibition of actomyosin MgATPase and regulation by phosphorylation** *J Biol Chem* 1990, **265**:10148-10155
270. Chikumi H, Vazquez-Prado J, Servitja JM, Miyazaki H and Gutkind JS **Potent Activation of RhoA by Galpha q and Gq-coupled Receptors** *J Biol Chem* 2002, **277**:27130-27134
271. Kim MK, Caspi RR, Nussenblatt RB, Kuwabara T and Palestine AG **Intraocular trafficking of lymphocytes in locally induced experimental autoimmune uveoretinitis (EAU)** *Cell Immunol* 1988, **112**:430-436
272. Togashi H, Emala CW, Hall IP and Hirshman CA **Carbachol-induced actin reorganization involves Gi activation of Rho in human airway smooth muscle cells** *Am J Physiol* 1998, **274**:L803-L809
273. Croxton TL, Lande B and Hirshman CA **Role of G proteins in agonist-induced Ca²⁺ sensitization of tracheal smooth muscle** *Am J Physiol* 1998, **275**:L748-L755
274. Pang L and Knox AJ **Regulation of TNF-alpha-induced eotaxin release from cultured human airway smooth muscle cells by beta2-agonists and corticosteroids** *FASEB J* 2001, **15**:261-269
275. Lazzeri N, Belvisi MG, Patel HJ, Yacoub MH, Fan Chung K and Mitchell JA **Effects of prostaglandin E2 and cAMP elevating drugs on GM-CSF release by cultured human airway smooth muscle cells. Relevance to asthma therapy** *Am J Respir Cell Mol Biol* 2001, **24**:44-48
276. Lazzeri N, Belvisi MG, Patel HJ, Chung KF, Yacoub MH and Mitchell JA **RANTES release by human airway smooth muscle: effects of prostaglandin E[2] and fenoterol** *Eur J Pharmacol* 2001, **433**:231-235
277. Gerthoffer WT **Agonist synergism in airway smooth muscle contraction** *J Pharmacol Exp Ther* 1996, **278**:800-807
278. Ediger TL and Toews ML **Synergistic stimulation of airway smooth muscle cell mitogenesis** *J Pharmacol Exp Ther* 2000, **294**:1076-1082
279. Togashi H, Hirshman CA and Emala CW **Qualitative immunoblot analysis of PKC isoforms expressed in airway smooth muscle** *Am J Physiol* 1997, **272**:L603-L607
280. Hirshman CA, Togashi H, Shao D and Emala CW **Galphai-2 is required for carbachol-induced stress fiber formation in human airway smooth muscle cells** *Am J Physiol* 1998, **275**:L911-L916
281. Fryer AD and Jacoby DB **Muscarinic receptors and control of airway smooth muscle** *Am J Respir Crit Care Med* 1998, **158**:S154-S160

Publish with **BioMed Central** and every scientist can read your work free of charge

"BioMed Central will be the most significant development for disseminating the results of biomedical research in our lifetime."

Sir Paul Nurse, Cancer Research UK

Your research papers will be:

- available free of charge to the entire biomedical community
- peer reviewed and published immediately upon acceptance
- cited in PubMed and archived on PubMed Central
- yours — you keep the copyright

Submit your manuscript here:
http://www.biomedcentral.com/info/publishing_adv.asp

