

2-20-2003

Transfection of IL-10 expression vectors into endothelial cultures attenuates alpha4beta7-dependent lymphocyte adhesion mediated by MAdCAM-1.

Makoto Sasaki

Louisiana State University Health Sciences Center-Shreveport (LSUHSC-S)

Paul Jordan

LSUHSC-S Gastroenterology

Jeff Houghton

Louisiana State University Health Sciences Center-Shreveport (LSUHSC-S)

Xianmin Meng

4Thomas Jefferson University, mengderm@yahoo.com

Makoto Itoh

Nagoya City University Graduate School of Medical Sciences

[Let us know how access to this document benefits you](#)

[See next page for additional authors](#)

Follow this and additional works at: <http://jdc.jefferson.edu/dcbfp>



Part of the [Dermatology Commons](#), and the [Medical Biochemistry Commons](#)

Recommended Citation

Sasaki, Makoto; Jordan, Paul; Houghton, Jeff; Meng, Xianmin; Itoh, Makoto; Joh, Takashi; and Alexander, J Steven, "Transfection of IL-10 expression vectors into endothelial cultures attenuates alpha4beta7-dependent lymphocyte adhesion mediated by MAdCAM-1." (2003). *Department of Dermatology and Cutaneous Biology Faculty Papers*. Paper 7.

<http://jdc.jefferson.edu/dcbfp/7>

Authors

Makoto Sasaki, Paul Jordan, Jeff Houghton, Xianmin Meng, Makoto Itoh, Takashi Joh, and J Steven Alexander

Research article

Open Access

Transfection of IL-10 expression vectors into endothelial cultures attenuates $\alpha 4\beta 7$ -dependent lymphocyte adhesion mediated by MAdCAM-I

Makoto Sasaki¹, Paul Jordan², Jeff Houghton¹, Xianmin Meng⁴,
Makoto Itoh³, Takashi Joh³ and J Steven Alexander*¹

Address: ¹Louisiana State University Health Sciences Center-Shreveport (LSUHSC-S) Molecular and Cellular Physiology, 1501 Kings Highway, Shreveport, LA, USA, ²LSUHSC-S Gastroenterology, 1501 Kings Highway, Shreveport, LA, USA, ³Nagoya City University Graduate School of Medical Sciences Department of Internal Medicine and Bioregulation, Nagoya City University Graduate School of Medical Sciences, 1 Kawasumi Mizuho-ku, Nagoya, Japan and ⁴Thomas Jefferson University Dermatology and Cutaneous Biol., 233 South 10th street, Suite 450, Philadelphia, PA, USA

Email: Makoto Sasaki - msasak@lsuhsc.edu; Paul Jordan - pjorda1@lsuhsc.edu; Jeff Houghton - jhough@lsuhsc.edu; Xianmin Meng - mengderm@yahoo.com; Makoto Itoh - mitoh@med.nagoya-cu.ac.jp; Takashi Joh - tjoh@med.nagoya-cu.ac.jp; J Steven Alexander* - jalex@lsuhsc.edu

* Corresponding author

Published: 20 February 2003

Received: 12 December 2002

BMC Gastroenterology 2003, **3**:3

Accepted: 20 February 2003

This article is available from: <http://www.biomedcentral.com/1471-230X/3/3>

© 2003 Sasaki et al; licensee BioMed Central Ltd. This is an Open Access article: verbatim copying and redistribution of this article are permitted in all media for any purpose, provided this notice is preserved along with the article's original URL.

Abstract

Background: Enhanced expression of MAdCAM-I (mucosal addressin cell adhesion molecule-I) is associated with the onset and progression of inflammatory bowel disease. The clinical significance of elevated MAdCAM-I expression is supported by studies showing that immunoneutralization of MAdCAM-I, or its ligands reduce inflammation and mucosal damage in models of colitis. Interleukin-10 (IL-10) is an endogenous anti-inflammatory and immunomodulatory cytokine that has been shown to prevent inflammation and injury in several animal studies, however clinical IL-10 treatment remains insufficient because of difficulties in the route of IL-10 administration and its biological half-life. Here, we examined the ability of introducing an IL-10 expression vector into endothelial cultures to reduce responses to a proinflammatory cytokine, TNF- α

Methods: A human IL-10 expression vector was transfected into high endothelial venular ('HEV') cells (SVEC4-10); we then examined TNF- α induced lymphocyte adhesion to lymphatic endothelial cells and TNF- α induced expression of MAdCAM-I and compared these responses to control monolayers.

Results: Transfection of the IL-10 vector into endothelial cultures significantly reduced TNF- α induced, MAdCAM-I dependent lymphocyte adhesion (compared to non-transfected cells). IL-10 transfected endothelial cells expressed less than half ($46 \pm 6.6\%$) of the MAdCAM-I induced by TNF- α (set as 100%) in non-transfected (control) cells.

Conclusion: Our results suggest that gene therapy of the gut microvasculature with IL-10 vectors may be useful in the clinical treatment of IBD.

Background

Endothelial cell adhesion molecules ('ECAMs') play essential roles in the development of chronic inflammation by recruiting leukocytes, especially lymphocytes to tissues. ECAMs support several forms of leukocyte adhesion including rolling, firm adhesion and extravasation [1]. Infiltration of tissues by leukocytes is a common hallmark of many chronic inflammatory states that include the inflammatory bowel diseases (IBD), ulcerative colitis (UC), and Crohn's disease (CD). In the setting of IBD, the expression of ECAMs like ICAM-1, VCAM-1, and MAdCAM-1 (mucosal addressin cell adhesion molecule-1) is observed in experimental models of colitis, [2–5] and also within the inflamed human colon in Crohn's disease and ulcerative colitis [6,7].

Among the adhesion molecules up-regulated in IBD, MAdCAM-1, the mucosal cell adhesion molecule, is thought to be preeminent in the development of chronic gut inflammation. MAdCAM-1 is normally expressed in the gut, and its expression is dramatically amplified during inflammation [2,3]. The functional significance of increased appearance of MAdCAM-1 in IBD is supported by several reports which show that immunoneutralization of either MAdCAM-1 or its ligand, the $\alpha 4\beta 7$ integrin, attenuate inflammation and mucosal damage in animal models of colitis [8–10]. However, since monoclonal antibodies directed against other ECAMs, particularly VCAM-1, can as well reduce disease activity in colitis models [11–14], the literature suggests that MAdCAM-1 is probably necessary, but insufficient for the maximal penetrance of experimental and probably also clinical IBD.

Based on these findings, it is apparent that a better understanding of the mechanisms regulating ECAM expression, especially that of MAdCAM-1, might help to devise improved therapies for colitis.

It has been suggested that pathologic activation of the mucosal immune system in response to antigens is a key factor in the pathogenesis of IBD. Furthermore, changes in leukocyte migration and cytokine production appear to contribute the perpetuation of IBD [15]. Based on modern advances, recombinant anti-inflammatory cytokines (i.e. IL-10) treatment is now being developed for experimental colitis and human IBD. IL-10 produced by macrophages and monocytes appears to limit chronic inflammation [16–18], through a decreased release of inflammatory factors (IL-1, IL-6, IL-12, TNF- α , GM-CSF, GCSF), suppression of adhesive determinants (MHC class II molecule, $\beta 7$), and by blocking ICAM-1 induction [19–24].

Conversely, IL-10 gene-knockout mice develop a chronic colitis that is extremely similar to IBD [25]. IL-10 treat-

ment can reduce inflammation in several models of colitis [26–30] and human IBD [31–35]. However, the clinical efficacy of systemically administered IL-10 for patients mild to moderately active Crohn's disease has not been as effective as hoped [33–35]. Furthermore the efficacy of IL-10 administration in mouse colitis models is contentious [36].

We have described in vitro that exogenous IL-10 can block the expression of MAdCAM-1 in response to TNF- α , and attenuates lymphocyte adhesion to lymphatic node derived endothelium under cytokine stimulating conditions via NF- κ B inhibition [5]. The purpose of the current study was to show that induction of endothelial expression of IL-10 through an IL-10 expression vector attenuates MAdCAM-1 expression in response to TNF- α and optimistically suggests the possibility of targeted Th2-cytokine gene therapy in IBD.

Methods

Reagents

Recombinant mouse TNF- α was purchased from ENDOGEN (Stoughton, MA) and plasmid containing human IL-10 (phIL-10) was generous gift from Dr. Meng X (Thomas Jefferson University, PA).

Cell culture

The SVEC4-10 line is an endothelial cell line derived by SV40 (strain 4A) transformation of murine small vessel endothelial cells, originally isolated from the axillary lymph node vessels of an adult male C3H/HeJ mouse [37,38]. These cell types were all maintained in Dulbecco's modified Eagle's medium (DMEM) with 10% fetal calf serum with 1% antibiotic/ antimycotic. Cells were seeded into 24-well tissue culture plates at approximately 20,000 cells/cm², and cultures were used immediately upon reaching confluence (usually 3–4 days after seeding).

Lymphocytes

The mouse CD8⁺ T cell lymphoma TK-1 cells (that constitutively expresses the $\alpha 4\beta 7$ integrin [39]) were obtained as a generous gift from Dr. Eugene Butcher (Stanford University, CA). These cells were cultured in RPMI-1640 medium supplemented with 10% FCS and 0.05 mM 2-mercaptoethanol (minus antibiotic/ antimycotic).

IL-10 gene transfer

The pCYIL-10 vector is an expression vector which was established by Dr. Xianmin Meng based on the pCY4B vector [40]. Cultured SVEC endothelial cells seeded in 24 wells were transfected at 70% confluency with SuperFect (Qiagen). Briefly, 1 μ g plasmid DNA was diluted with 60 μ l DMEM and then 5 μ l Superfect (3 mg/ml) was added. After incubation at room temperature for 10 min, the

complex was mixed with 350 μ l medium and added to the each wells. After 2 h at 37°C, 5% CO₂, the complex was aspirated and washed 2 times with medium following replace by 1 ml of medium. After incubation at 37°C for 24 h cells were stimulated with TNF- α .

Western analysis of cell lysates

24 h of IL-10 gene transfer, monolayers were treated with TNF- α (1 ng/ml, 24 h). All cell samples were harvested at 24 hours. Equal quantities of protein (75 μ g) from each sample were electrophoretically separated on 7.5% SDS-PAGE gels. Gels were transferred to nitrocellulose membranes (Sigma) and blocked with 5% milk powder in PBS at 4°C (overnight). These membranes were washed twice for 10 min with wash buffer (0.1% milk powder in PBS). Primary rat anti-mouse MAdCAM-1 mAb was added at a concentration of 10 μ g/ml and incubated at room temperature for 2 h. These membranes were washed twice with wash buffer. Secondary rabbit anti-rat horseradish peroxidase conjugated secondary antibody (Sigma) was added at a 1:2000 dilution for 2 h. Lastly, membranes were washed 3 times and developed using the enhanced chemiluminescence (ECL) detection system (Amersham, La Jolla, CA). The density of MAdCAM-1 staining was measured by scanning the 60 kD band, using a HP ScanJet™ flatbed scanner. Images were analyzed for density using Image Pro Plus™ image analysis software (Media Cybernetics). The data are expressed as a percentage of TNF- α -induced level of density. In each protocol, treatments were performed at least in triplicate.

TK-1 lymphocyte adhesion assay

Briefly, TK-1 cells were suspended in culture medium and fluorescence labeled by incubating TK-1 cells at 2×10^6 cells/ml with 0.02 mg fluorescein diacetate (FDA) (Sigma) at 37°C for 30 min. The cells were then washed twice with ice-cold HBSS, spun at 250 g for 5 min to remove unincorporated fluorescence and suspended in HBSS. The TK-1 lymphocyte cell line used in this assay expresses high levels of the $\alpha 4\beta 7$ integrin, [39,41] which can interact with multiple ligands including mucosal addressin-1 (MAdCAM-1), as well as VCAM-1, L-selectin and fibronectin [42]. In this system, TNF- α stimulated TK-1 adhesion to SVEC4-10 endothelial cells is at least 50% MAdCAM-1 dependent [41]. SVEC monolayers were grown in 48-well plates as described, and to activate endothelium, the monolayers were incubated with TNF- α (1 ng/ml) for 24 h. Cytokine treated endothelial cells were washed three times with media. Labeled TK-1 cells were then added to the endothelium at a 5:1 lymphocyte to endothelial cell ratio [43] and allowed to bind for 30 min under static conditions. At the end of the incubation period, the supernatant was removed and the monolayers were washed twice with HBSS. Plates were read on a Fluoroskan Ascent (Labsystems, Helsinki, Finland) set for excitation at 485 nm, and

emission at 515 nm. Blank wells (0% TK-1 adhesion) were run as controls that did not contain labeled TK-1 cells. The data are expressed as a percentage of TNF- α -induced level of fluorescence. In each protocol, treatments were performed at least in triplicate.

Statistical analysis

All values are expressed as mean \pm SD. Data were analyzed using multiple comparisons. Probability (*P*) values of < 0.05 were considered significant.

Results

Secretion of human IL-10 concentration by transfected endothelial cells

To screen for the efficacy of IL-10 transfected SVEC, we initially measured the IL-10 concentration in the medium prior to gene transfection. There was no detectable human IL-10 signal in the non-transfected cell medium (control), nor any mouse IL-10 (data not shown). However, the medium from the IL-10 transfected SVEC medium showed a large and significant increase in the IL-10 concentration (1209 ± 2 pg/ml) at 48 h after IL-10 gene transfection (Figure 1). Importantly, SVEC cells transfected with this vector showed no evidence of toxicity, altered proliferation and morphologically were indistinguishable from mock-transfected and untreated controls.

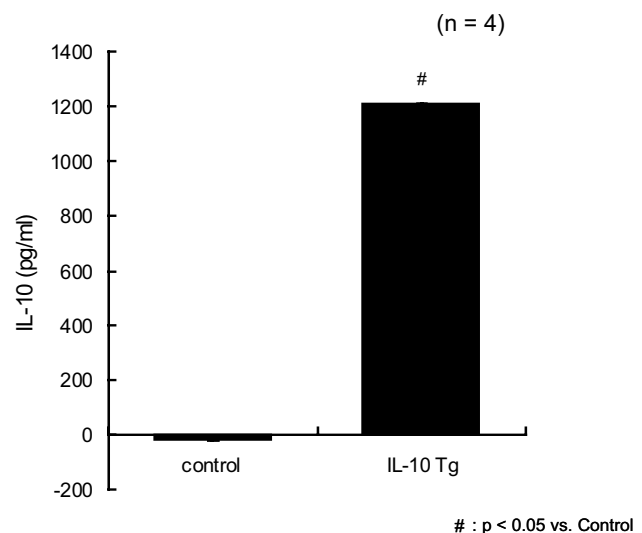


Figure 1

Secretion of human IL-10 concentration by transfected endothelial cells. There was no detectable human IL-10 signal in the non-transfected cell medium (control). However, the medium from the IL-10 transfected SVEC medium showed a large and significant increase in the IL-10 concentration (1209 ± 2 pg/ml) at 48 h after IL-10 gene transfection ($n = 5$). (# $p < 0.05$ from control). One-way ANOVA with Fisher's PLSD test.

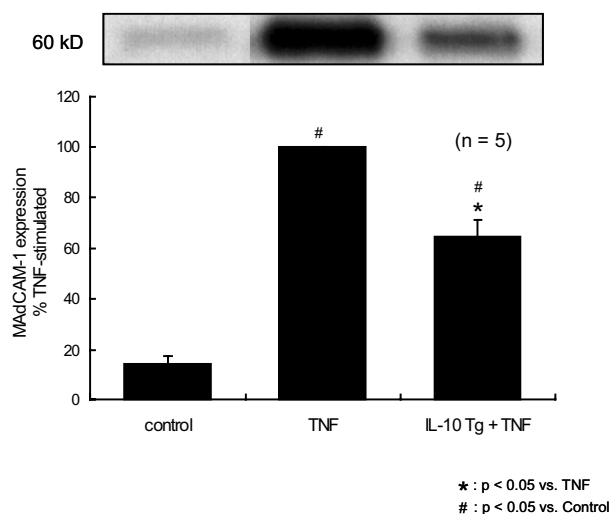


Figure 2
IL-10 gene transfected SVEC is resistant to TNF- α induced MAdCAM-1 expression. TNF- α (1 ng/ml, 24 h) significantly increased expression of MAdCAM-1 and this was significantly blocked by IL-10 gene transfection. Alone, IL-10 gene transfer had no effect on MAdCAM-1 expression (n = 5). (* p < 0.05 from TNF- α , # p < 0.05 from control). One-way ANOVA with Fisher's PLSD test.

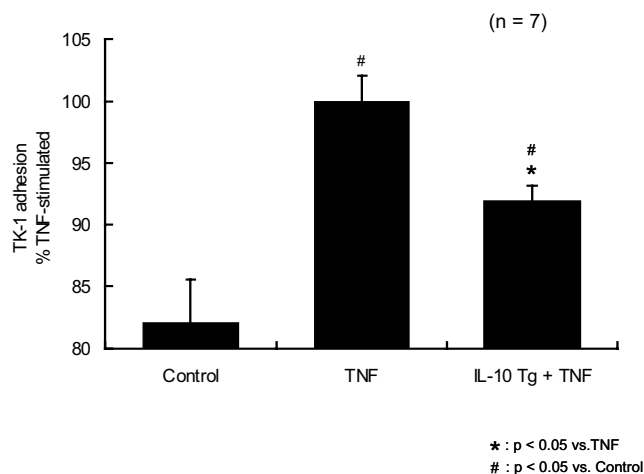


Figure 3
IL-10 gene transfer blocked TNF- α induced lymphocyte adhesion on SVEC. TNF- α stimulation (1 ng/ml, 24 h) significantly increased the adhesion of TK-1 lymphocytes to SVEC monolayers. IL-10 gene transfer significantly reduced TK-1 adhesion in response to TNF- α stimulation at 24 h. IL-10 gene transfer did not modify the basal level of lymphocyte adhesion to the endothelium without TNF- α treatment (n = 7). (* p < 0.05 from TNF- α , # p < 0.05 from control). One-way ANOVA with Fisher's PLSD test.

MAdCAM-1 expression in IL-10 gene transfected endothelial cells

The anti-inflammatory effect of IL-10 gene transfection in endothelial cells was measured by the reduction in the expression of the endothelial cell adhesion molecule MAdCAM-1 induced by TNF- α (1 ng/ml, 24 h). TNF- α strongly induced expression of MAdCAM-1. This effect was significantly reduced by IL-10 gene transfection (Fig. 2). Alone, the IL-10 gene transfection had no effect on MAdCAM-1 expression.

α 4 β 7 integrin lymphocyte adhesion to IL-10 gene transfected endothelial cells

Having established that IL-10 gene transfection exerts a significant protective effect against TNF- α stimulated endothelial MAdCAM-1 induction, we next examined the effects of IL-10 gene transfection on the adhesion of α 4 β 7 expressing lymphocytes (using the mouse cell line TK-1) to endothelial monolayers. TNF- α stimulation (1 ng/ml, 24 h) significantly increased the adhesion of TK-1 lymphocytes to SVEC monolayers. IL-10 gene transfection significantly reduced TK-1 adhesion in response to TNF- α stimulation at 24 h (Fig. 3). Alone, IL-10 gene transfection did not modify the basal level of lymphocyte adhesion to the endothelium without TNF- α treatment.

Discussion

MAdCAM-1 is a 60 kDa endothelial cell surface molecule that is strongly expressed by mucosal endothelial cells, particularly following exposure of these cells to pro-inflammatory cytokines such as TNF- α . Expression of MAdCAM-1 has also been reported in the brain, and in the heart [44,45]; based on these findings, it is now been suggested that MAdCAM-1 might play roles in chronic inflammation of these organs as well.

With respect to inflammatory bowel disease, MAdCAM-1 appears to be essential to the lymphocyte homing to the mucosa associated lymphoid tissue (MALT) [6,37,38,46]. Since MAdCAM-1 is normally expressed mainly within the gut microvasculature, and is dramatically amplified during IBD, it has been suggested that increased MAdCAM-1 expression contributes to the etiology of IBD through its ability to direct homing of lymphocytes to the gut. This notion is well supported by several reports that show that antibodies directed against either MAdCAM-1, or its lymphocyte ligand, the α 4 β 7 integrin will significantly attenuate several indices of gut damage in experimental models of colitis [9,47].

Several studies have indicated that T helper (Th1) immune response has important roles in the development of IBD [48–50]. Moreover, dysregulation of cytokine networks is involved in Th1-dominant immune responses in IBD [48–50]. Among the Th1 cytokines, TNF- α is thought to be perhaps the most important cytokine responsible for driving the onset and evolution of IBD. Because of this prime role of TNF- α in IBD, anti-TNF- α antibody therapy has been very successfully used in IBD to reduce both colonic injury and expression of ECAMs in IBD [51].

IL-10, a cytokine produced by activated macrophages and Th2-type T cells, has crucial inhibitory effect against several Th-1 type immune responses, such as the antigen-presenting functions of monocytes and macrophages [52,53]. IL-10 may play an important role in preventing the induction of IBD, since animals deficient in IL-10 will develop colitis spontaneously, and low levels of IL-10 are positively correlated with recurrences of Crohn's disease [25,54]. However, unlike TNF- α based therapies, the administration of recombinant IL-10 (rIL-10) shows poor clinical efficacy. This may reflect the fact that TNF- α therapies for IBD are aimed at efficiently clearing TNF- α , while IL-10 therapies must *increase* IL-10 and recombinant IL-10 is likely too rapidly cleared from the circulation after *in vivo* administration to provide a uniform protection [55]. On the other hand, IL-10 *gene transfer* technology has been used with some success in models of colitis, however its effectiveness is also variable. One reason for this variability may be that the final serum IL-10 concentration of gene-transfected mice might be below the critical threshold needed for gut protection [55,56]. Therefore targeting of the IL-10 gene to the inflamed colon should ideally exploit tissue (i.e. gut) specific promoters to control selective organ gene transfer technology, endothelial specific promoters and also organ specific intra-arterial injection of vector to activate some genes in specific locations [57].

Administration of IL-10 *in vitro* prevents TNF- α stimulated expression of MAdCAM-1, and also blocks lymphocyte adhesion to endothelial cells to the same extent as dexamethasone treatment, currently a key therapy in IBD [5]. Interestingly, the low basal levels of MAdCAM-1 expressed by control (cytokine unstimulated) cells were not affected by IL-10 transfection. This suggests that basal expression of MAdCAM-1, is IL-10 independent, while cytokine stimulated MAdCAM-1 is modulated by IL-10. While we previously showed that delivery of IL-10 to the endothelium *in vitro* is protective against TNF- α [5], *in vivo* IL-10 has not been as effective. There are at least two regulating pathways in ECAM expression, one is a cytokine-dependent pathway which is widely studied and the other is cytokine-independent [58]. IL-10 apparently prevents cytokine-induced NF- κ B binding activity to the ECAM

promoter [59] and blocks the excessive expression of ECAMs in cytokine-mediated inflammatory conditions. In this regard, IL-10 has been used as a treatment in inflammatory diseases, like IBD for precisely this reason: because it has few effects at sites remote from inflammation. Similarly, we found that IL-10 transfection did not affect cell morphology, total protein level, or the expression of actin and vimentin in these cells (measured by Ponceau red S staining density on immunoblots). Therefore methods like endothelial gene transfection/transfer *in vivo* may effectively maintain adequate IL-10 concentrations near the endothelial cells that finally achieve the protection against cytokines that is not uniformly produced by systemic IL-10 administration.

The most important index for how well gene mediated recombinant IL-10 delivery might work in IBD appears to be measurement of the inhibition of lymphocyte-endothelium binding mediated by TNF- α induced MAdCAM-1 expression. In this experiment, IL-10 induction in the endothelium efficiently blocked TNF- α induced MAdCAM-1 expression and α 4 β 7-dependent lymphocyte adhesion on SVEC endothelial cells. IL-10 deficiency in colitis increases expression of several ECAMs including ICAM-1, VCAM-1 and MAdCAM-1 [60]. We performed an experiment, where under non-stimulated conditions only 55.7 \pm 5.4% as many of the TK-1 lymphocytes bound to SVEC compared to TNF- α stimulation (100%, or 'maximal' binding). TK-1 were seen to interact with SVEC through ICAM-1 as well MAdCAM-1, but not VCAM-1, since an antibody against MAdCAM-1 reduced adhesion to 27 \pm 4.6% of maximum and an anti-ICAM-1 reduced adhesion to 54.6 \pm 8.3 % of maximum; anti-VCAM-1 reduced adhesion to 91% of maximum (blocks lymphocyte adhesion to endothelial cells (*data not shown*). Therefore we feel that adhesion in this system is mostly MAdCAM-1 dependent.

IL-10 transfection of endothelial cells reduced MAdCAM-1 expression by 42% (following TNF- α stimulation) and reduced TK-1 adhesion by 50%. Therefore, these data suggest that the reduction of TK-1 adhesion is approximately 84% (42%/50%) MAdCAM-1 dependent, and that the remaining 16% of adhesion depends on other ECAMs, (such as ICAM-1).

Although tissue specific promoters might further increase the organ specificity and transgene delivery of this approach, they have not been evaluated in this report. Our findings suggest that lymphatic or gut endothelial transfection with Th2 cytokines like IL-10 may be an effective method to reduce important clinical symptoms associated with IBD which are mediated by MAdCAM-1 dependent lymphocyte adhesion.

Abbreviations

MAdCAM-1 (mucosal addressin cell adhesion molecule-1), IL-10 (Interleukin-10), HEV (high endothelial venular), ECAMs (endothelial cell adhesion molecules), IBD (inflammatory bowel diseases), UC (ulcerative colitis), CD (Crohn's disease), ICAM-1 (intracellular adhesion molecule 1), VCAM-1 (vascular adhesion molecule 1), NF- κ B (nuclear transfection factor κ B), TNF- α (tumor necrosis factor alpha), GM-CSF (granulocyte-macrophage colony-stimulating factor), GCSF (granulocyte colony stimulating factor), ECL (enhanced chemiluminescence)

Competing interests

None declared.

Acknowledgements

This work supported by NIH grants HL47615, DK43785 and DK47663.

References

- Granger DN and Kubes P **The microcirculation and inflammation: modulation of leukocyte-endothelial cell adhesion.** *J Leukoc Biol* 1994, **55**:662-675
- Connor EM, Eppihimer MJ, Morise Z, Granger DN and Grisham MB **Expression of mucosal addressin cell adhesion molecule-1 (MAdCAM-1) in acute and chronic inflammation.** *J Leukoc Biol* 1999, **65**:349-355
- Shigematsu T, Specian RD, Wolf RE, Grisham MB and Granger DN **MAdCAM mediates lymphocyte-endothelial cell adhesion in a murine model of chronic colitis.** *Am J Physiol Gastrointest Liver Physiol* 2001, **281**:G1309-G1315
- Oshima T, Jordan P, Grisham MB, Alexander JS, Jennings M and Sasaki M **TNF-alpha induced endothelial MAdCAM-1 expression is regulated by exogenous, not endogenous nitric oxide.** *BMC Gastroenterol* 2001, **1**:5
- Oshima T, Pavlick K, Grisham MB, Jordan P, Manas K and Joh T **Glucocorticoids and IL-10, but not 6-MP, 5-ASA or sulfasalazine block endothelial expression of MAdCAM-1: implications for inflammatory bowel disease therapy.** *Aliment Pharmacol Ther* 2001, **15**:1211-1218
- Briskin M, Winsor-Hines D, Shyjan A, Cochran N, Bloom S and Wilson J **Human mucosal addressin cell adhesion molecule-1 is preferentially expressed in intestinal tract and associated lymphoid tissue.** *Am J Pathol* 1997, **151**:97-110
- Souza HS, Elia CC, Spencer J and MacDonald TT **Expression of lymphocyte-endothelial receptor-ligand pairs, alpha4beta7/MAdCAM-1 and OX40/OX40 ligand in the colon and jejunum of patients with inflammatory bowel disease.** *Gut* 1999, **45**:856-863
- Fong S, Jones S, Renz ME, Chiu HH, Ryan AM and Presta LG **Mucosal addressin cell adhesion molecule-1 (MAdCAM-1). Its binding motif for alpha 4 beta 7 and role in experimental colitis.** *Immunol Res* 1997, **16**:299-311
- Kato S, Hokari R, Matsuzaki K, Iwai A, Kawaguchi A and Nagao S **Amelioration of murine experimental colitis by inhibition of mucosal addressin cell adhesion molecule-1.** *J Pharmacol Exp Ther* 2000, **295**:183-189
- Vainer B and Nielsen OH **[The influence of adhesion molecules in inflammatory bowel diseases].** *Ugeskr Laeger* 1997, **159**:3767-3771
- Bendjelloul F, Maly P, Mandys V, Jirkovska M, Prokesova L and Tuckova L **Intercellular adhesion molecule-1 (ICAM-1) deficiency protects mice against severe forms of experimentally induced colitis.** *Clin Exp Immunol* 2000, **119**:57-63
- Hamamoto N, Maemura K, Hirata I, Murano M, Sasaki S and Katsu K **Inhibition of dextran sulphate sodium (DSS)-induced colitis in mice by intracolonic administered antibodies against adhesion molecules (endothelial leukocyte adhesion molecule-1 (ELAM-1) or intercellular adhesion molecule-1 (ICAM-1)).** *Clin Exp Immunol* 1999, **117**:462-468
- Sans M, Panes J, Ardite E, Elizalde JL, Arce Y and Elena M **VCAM-1 and ICAM-1 mediate leukocyte-endothelial cell adhesion in rat experimental colitis.** *Gastroenterology* 1999, **116**:874-883
- Taniguchi T, Tsukada H, Nakamura H, Kodama M, Fukuda K and Saito T **Effects of the anti-ICAM-1 monoclonal antibody on dextran sodium sulphate-induced colitis in rats.** *J Gastroenterol Hepatol* 1998, **13**:945-949
- Neurath MF and Schurmann G **[Immunopathogenesis of inflammatory bowel diseases].** *Chirurg* 2000, **71**:30-40
- Fiorentino DF, Zlotnik A, Mosmann TR, Howard M and O'Garra A **IL-10 inhibits cytokine production by activated macrophages.** *J Immunol* 1991, **147**:3815-3822
- Fiorentino DF, Bond MW and Mosmann TR **Two types of mouse T helper cell. IV. Th2 clones secrete a factor that inhibits cytokine production by Th1 clones.** *J Exp Med* 1989, **170**:2081-2095
- Del Prete G, De Carli M, Almerigogna F, Giudizi MG, Biagiotti R and Romagnani S **Human IL-10 is produced by both type 1 helper (Th1) and type 2 helper (Th2) T cell clones and inhibits their antigen-specific proliferation and cytokine production.** *J Immunol* 1993, **150**:353-360
- Bogdan C and Nathan C **Modulation of macrophage function by transforming growth factor beta, interleukin-4, and interleukin-10.** *Ann N Y Acad Sci* 1993, **685**:713-739
- Bogdan C, Vodovotz Y and Nathan C **Macrophage deactivation by interleukin 10.** *J Exp Med* 1991, **174**:1549-1555
- de Waal MR, Abrams J, Bennett B, Figdor CG and de Vries JE **Interleukin 10 (IL-10) inhibits cytokine synthesis by human monocytes: an autoregulatory role of IL-10 produced by monocytes.** *J Exp Med* 1991, **174**:1209-1220
- Wang P, Wu P, Siegel MI, Egan RW and Billah MM **IL-10 inhibits transcription of cytokine genes in human peripheral blood mononuclear cells.** *J Immunol* 1994, **153**:811-816
- Wang P, Wu P, Anthes JC, Siegel MI, Egan RW and Billah MM **Interleukin-10 inhibits interleukin-8 production in human neutrophils.** *Blood* 1994, **83**:2678-2683
- Willems F, Marchant A, Delville JP, Gerard C, Delvaux A and Velu T **Interleukin-10 inhibits B7 and intercellular adhesion molecule-1 expression on human monocytes.** *Eur J Immunol* 1994, **24**:1007-1009
- Kuhn R, Lohler J, Rennick D, Rajewsky K and Muller W **Interleukin-10-deficient mice develop chronic enterocolitis.** *Cell* 1993, **75**:263-274
- Powrie F, Leach MW, Mauze S, Menon S, Caddle LB and Coffman RL **Inhibition of Th1 responses prevents inflammatory bowel disease in scid mice reconstituted with CD45RBhi CD4+ T cells.** *Immunity* 1994, **1**:553-562
- Powrie F, Leach MW, Mauze S, Caddle LB and Coffman RL **Phenotypically distinct subsets of CD4+ T cells induce or protect from chronic intestinal inflammation in C. B-17 scid mice.** *Int Immunol* 1993, **5**:1461-1471
- Herfarth HH, Mohanty SP, Rath HC, Tonkongy S and Sartor RB **Interleukin 10 suppresses experimental chronic, granulomatous inflammation induced by bacterial cell wall polymers.** *Gut* 1996, **39**:836-845
- Herfarth HH, Bocker U, Janardhanam R and Sartor RB **Subtherapeutic corticosteroids potentiate the ability of interleukin 10 to prevent chronic inflammation in rats.** *Gastroenterology* 1998, **115**:856-865
- Tomoyose M, Mitsuyama K, Ishida H, Toyonaga A and Tanikawa K **Role of interleukin-10 in a murine model of dextran sulfate sodium-induced colitis.** *Scand J Gastroenterol* 1998, **33**:435-440
- Schreiber S, Heinig T, Thiele HG and Raedler A **Immunoregulatory role of interleukin 10 in patients with inflammatory bowel disease.** *Gastroenterology* 1995, **108**:1434-1444
- van Deventer SJ, Elson CO and Fedorak RN **Multiple doses of intravenous interleukin 10 in steroid-refractory Crohn's disease.** *Crohn's Disease Study Group.* *Gastroenterology* 1997, **113**:383-389
- Fedorak RN, Gangl A, Elson CO, Rutgeerts P, Schreiber S and Wild G **Recombinant human interleukin 10 in the treatment of patients with mild to moderately active Crohn's disease.** *The Interleukin 10 Inflammatory Bowel Disease Cooperative Study Group.* *Gastroenterology* 2000, **119**:1473-1482
- Schreiber S, Fedorak RN, Nielsen OH, Wild G, Williams CN and Nikolaus S **Safety and efficacy of recombinant human inter-**

- leukin 10 in chronic active Crohn's disease. Crohn's Disease IL-10 Cooperative Study Group.** *Gastroenterology* 2000, **119**:1461-1472
35. Sands BE **Therapy of inflammatory bowel disease.** *Gastroenterology* 2000, **118**:S68-S82
 36. Ribbons KA, Thompson JH, Liu X, Pennline K, Clark DA and Miller MJ **Anti-inflammatory properties of interleukin-10 administration in hapten-induced colitis.** *Eur J Pharmacol* 1997, **323**:245-254
 37. Butcher EC and Picker LJ **Lymphocyte homing and homeostasis.** *Science* 1996, **272**:60-66
 38. Butcher EC **Leukocyte-endothelial cell recognition: three (or more) steps to specificity and diversity.** *Cell* 1991, **67**:1033-1036
 39. Ruegg C, Postigo AA, Sikorski EE, Butcher EC, Pytela R and Erle DJ **Role of integrin alpha 4 beta 7/alpha 4 beta 1 in lymphocyte adherence to fibronectin and VCAM-1 and in homotypic cell clustering.** *J Cell Biol* 1992, **117**:179-189
 40. Meng X, Sawamura D, Tamai K, Hanada K, Ishida H and Hashimoto I **Keratinocyte gene therapy for systemic diseases. Circulating interleukin 10 released from gene-transferred keratinocytes inhibits contact hypersensitivity at distant areas of the skin.** *J Clin Invest* 1998, **101**:1462-1467
 41. Oshima T, Pavlick KP, Laroux FS, Verma SK, Jordan P and Grisham MB **Regulation and distribution of MAdCAM-1 in endothelial cells in vitro.** *Am J Physiol Cell Physiol* 2001, **281**:C1096-C1105
 42. Hokari R, Miura S, Fujimori H, Tsuzuki Y, Shigematsu T and Higuchi H **Nitric oxide modulates T-lymphocyte migration in Peyer's patches and villous submucosa of rat small intestine.** *Gastroenterology* 1998, **115**:618-627
 43. McCafferty DM, Mudgett JS, Swain MG and Kubes P **Inducible nitric oxide synthase plays a critical role in resolving intestinal inflammation.** *Gastroenterology* 1997, **112**:1022-1027
 44. Schaible UE, Vestweber D, Butcher EG, Stehle T and Simon MM **Expression of endothelial cell adhesion molecules in joints and heart during *Borrelia burgdorferi* infection of mice.** *Cell Adhes Commun* 1994, **2**:465-479
 45. Kanwar JR, Kanwar RK, Wang D and Krissansen GW **Prevention of a chronic progressive form of experimental autoimmune encephalomyelitis by an antibody against mucosal addressin cell adhesion molecule-1, given early in the course of disease progression.** *Immunol Cell Biol* 2000, **78**:641-645
 46. Springer TA **Traffic signals for lymphocyte recirculation and leukocyte emigration: the multistep paradigm.** *Cell* 1994, **76**:301-314
 47. Picarella D, Hurlbut P, Rottman J, Shi X, Butcher E and Ringler DJ **Monoclonal antibodies specific for beta 7 integrin and mucosal addressin cell adhesion molecule-1 (MAdCAM-1) reduce inflammation in the colon of scid mice reconstituted with CD45RB^{high} CD4⁺ T cells.** *J Immunol* 1997, **158**:2099-2106
 48. Fuss IJ, Marth T, Neurath MF, Pearlstein GR, Jain A and Strober W **Anti-interleukin 12 treatment regulates apoptosis of Th1 T cells in experimental colitis in mice.** *Gastroenterology* 1999, **117**:1078-1088
 49. Sartor RB **Pathogenetic and clinical relevance of cytokines in inflammatory bowel disease.** *Immunol Res* 1991, **10**:465-471
 50. Simpson SJ, Hollander GA, Mizoguchi E, Allen D, Bhan AK and Wang B **Expression of pro-inflammatory cytokines by TCR alpha beta⁺ and TCR gamma delta⁺ T cells in an experimental model of colitis.** *Eur J Immunol* 1997, **27**:17-25
 51. Baert FJ, D'Haens GR, Peeters M, Hiele MI, Schaible TF and Shealy D **Tumor necrosis factor alpha antibody (infliximab) therapy profoundly down-regulates the inflammation in Crohn's ileocolitis.** *Gastroenterology* 1999, **116**:22-28
 52. Fiorentino DF, Zlotnik A, Mosmann TR, Howard M and O'Garra A **IL-10 inhibits cytokine production by activated macrophages.** *J Immunol* 1991, **147**:3815-3822
 53. Fiorentino DF, Zlotnik A, Vieira P, Mosmann TR, Howard M and Moore KW **IL-10 acts on the antigen-presenting cell to inhibit cytokine production by Th1 cells.** *J Immunol* 1991, **146**:3444-3451
 54. Meresse B, Rutgeerts P, Malchow H, Dubucquoi S, Dessaint JP and Cohard M **Low ileal interleukin 10 concentrations are predictive of endoscopic recurrence in patients with Crohn's disease.** *Gut* 2002, **50**:25-28
 55. Chernoff AE, Granowitz EV, Shapiro L, Vannier E, Lonnemann G and Angel JB **A randomized, controlled trial of IL-10 in humans. Inhibition of inflammatory cytokine production and immune responses.** *J Immunol* 1995, **154**:5492-5499
 56. Barbara G, Xing Z, Hogaboam CM, Gaudie J and Collins SM **Interleukin 10 gene transfer prevents experimental colitis in rats.** *Gut* 2000, **46**:344-349
 57. Sferra TJ, McNeely D and Johnson PR **Gene transfer to the intestinal tract: a new approach using selective injection of the superior mesenteric artery.** *Hum Gene Ther* 1997, **8**:681-687
 58. Gao J, Choudhary S, Banerjee AK and De BP **Human parainfluenza virus type 3 upregulates ICAM-1 (CD54) expression in a cytokine-independent manner.** *Gene Expr* 2000, **9**:115-121
 59. Song S, Ling-Hu H, Roebuck KA, Rabbi MF, Donnelly RP and Finnegan A **Interleukin-10 inhibits interferon-gamma-induced intercellular adhesion molecule-1 gene transcription in human monocytes.** *Blood* 1997, **89**:4461-4469
 60. Kawachi S, Jennings S, Panes J, Cockrell A, Laroux FS and Gray L **Cytokine and endothelial cell adhesion molecule expression in interleukin-10-deficient mice.** *Am J Physiol Gastrointest Liver Physiol* 2000, **278**:G734-G743

Pre-publication history

The pre-publication history for this paper can be accessed here:

<http://www.biomedcentral.com/1471-230X/3/3/prepub>

Publish with **BioMed Central** and every scientist can read your work free of charge

"BioMed Central will be the most significant development for disseminating the results of biomedical research in our lifetime."

Sir Paul Nurse, Cancer Research UK

Your research papers will be:

- available free of charge to the entire biomedical community
- peer reviewed and published immediately upon acceptance
- cited in PubMed and archived on PubMed Central
- yours — you keep the copyright

Submit your manuscript here:
http://www.biomedcentral.com/info/publishing_adv.asp

